



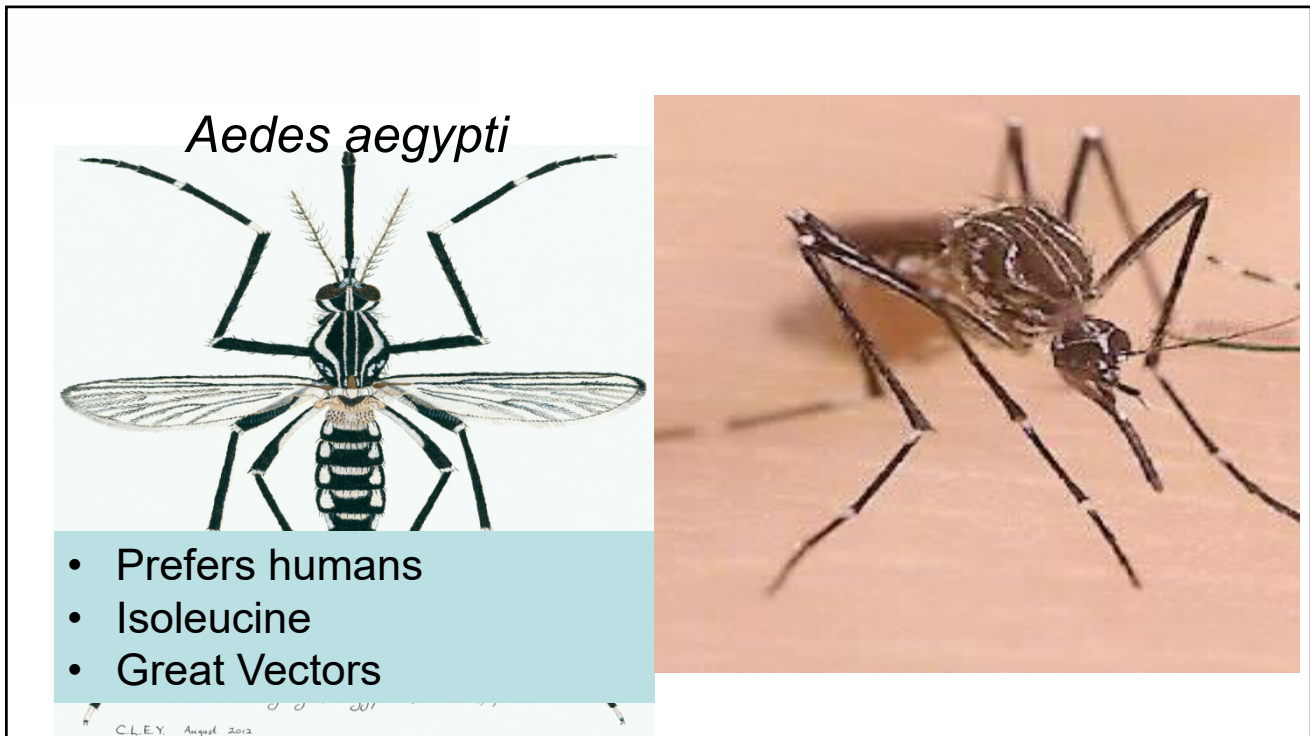
Aedes aegypti Container breeders

William Van Dyke
Northwest MVCD



Mosquito Larvae





Container Mosquito Habitat

- Small containers and other cryptic habitats
- Vectors for Zika, Dengue, Yellow Fever and Chikungunya







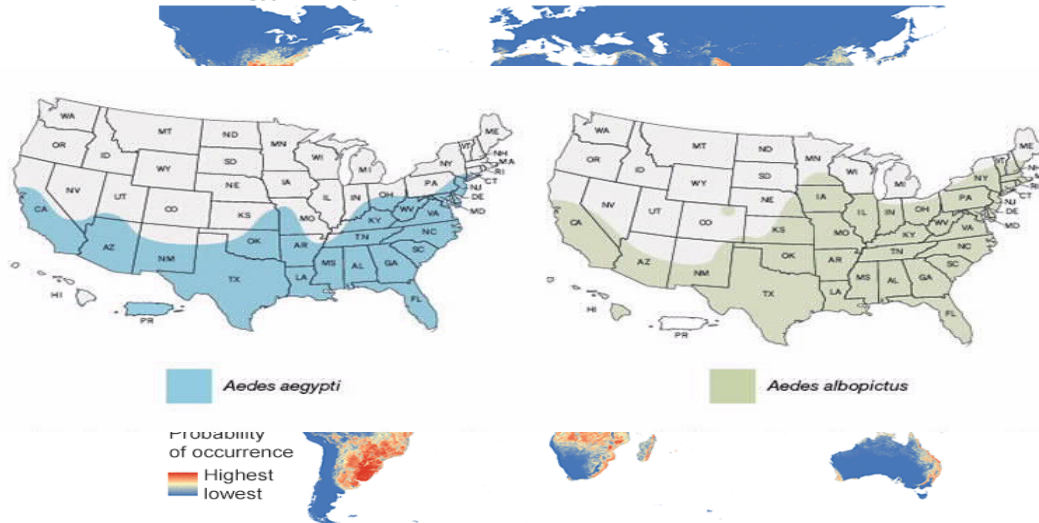
Courtesy: NPR.org



Global distribution of *Aedes* mosquitoes

Aedes aegypti and *Aedes albopictus* can spread the Zika virus if infected with it

Aedes aegypti mosquito



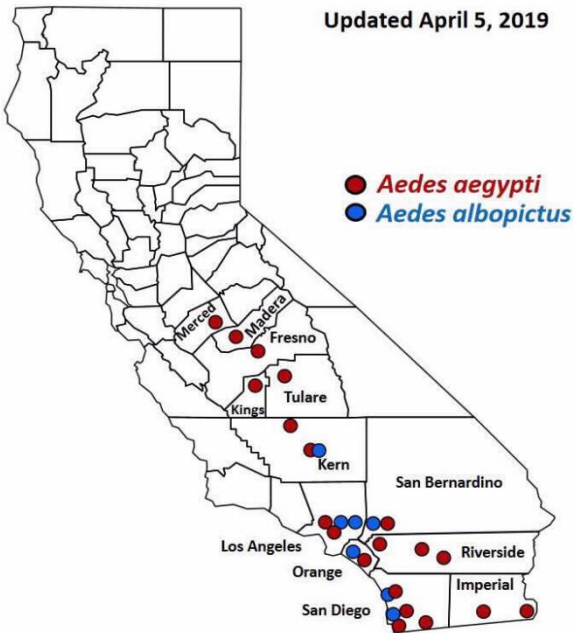
Predicted global distribution of each species based on statistical distribution models

Source: ELife 2015

BBC

***Aedes aegypti* and *Aedes albopictus* Mosquitoes in California** **Detection Sites by County/City**

Updated April 5, 2019



● *Aedes aegypti*
● *Aedes albopictus*

Counties with *Aedes aegypti* only:
Fresno, Imperial, Kings, Madera, Riverside, Merced, Tulare

Both *Aedes aegypti* and *Aedes albopictus*:
Kern, Los Angeles, Orange, San Bernardino, San Diego

See pages 2 – 5 for *Aedes* detections by city or census-designated place in each county.

1

Aedes aegypti and *Aedes albopictus*

Riverside

Cathedral City
Coachella
Corona
East Hemet*
Eastvale
Hemet
Indian Wells
Indio
Jurupa Valley
La Quinta
Mecca*
Moreno Valley
Norco
Palm Desert
Palm Springs
Perris
Rancho Mirage
Riverside
San Jacinto
Valle Vista*

San Bernardino

Bloomington*
Chino
Chino Hills
Colton
Fontana
Grand Terrace
Highland
Loma Linda
Mentone*
Montclair
Ontario
Rancho Cucamonga
Redlands
Rialto
San Bernardino
Yucaipa
Upland
Montclair

San Diego

Bonita*
Bostonia*
Casa De Oro-Mount Helix*
Chula Vista
Coronado
El Cajon
Escondido
Imperial Beach
Lakeside*
La Mesa
La Presa*
Lemon Grove
National City
Oceanside
Poway
Rancho San Diego*
San Diego
Santee
Spring Valley*
Tecate*
Vista
Winter Gardens*
Carlsbad
San Diego

Tulare

Dinuba
Exeter
Farmersville
Goshen*
Ivanhoe*
Orosi*
Sultana*
Tulare
Visalia
Woodlake

* New detection within the previous four weeks
*Unincorporated Census-Designated Places

Control Methods (IVM)

- Public Education
- Adulticiding
- Larval Source Management

The ever present threat of West Nile virus

2003-2018 WNV ACTIVITY SUMMARY

Element	2003	2004	2005	2006	2007	2008	2009	2010	2011	2012	2013	2014	2015	2016	2017	2018	Total
Human cases (fatal)	3 ¹ (0)	779 (29)	880 (19)	278 (7)	380 (21)	445 (15)	112 (4)	111 (6)	158 (9)	479 (20)	379 (15)	801 (31)	782 (53)	442 (19)	553 (44)	218 (11)	6,800 (303)
Horses	1 ²	540	456	58	28	32	18	19	15	22	23	15 ³	19 ³	21 ³	21	11	1,299
Dead birds	96	3,232	3,046	1,446	1,396	2,569	515	416	688	1,644	1,251	2,442	1,349	1,352	510	501	22,093
Mosquito samples	32	1,136	1,242	832	1,007	2,003	1,063	1,305	2,087	2849	2,528	3,340	3,329	3,528	3,371	1,963	31,615
Sentinel chickens	70	809	1,053	640	510	585	443	281	391	540	485	443	449	343	305	163	7,510
Squirrels	-	49	48	32	26	32	10	24	24	23	0 ³	0 ³	0 ³	0 ³	0 ³	0 ³	276

¹ There were 20 imported human cases. ² There were 3 imported horse cases. ³ Not monitored this year.

Contact Northwest MVCD
951-340-9792



www.Northwestmvcd.org