



# RIVERSIDE PUBLIC UTILITIES

## Board Memorandum

**BOARD OF PUBLIC UTILITIES**

**DATE:** July 8, 2019

**GENERAL MANAGER'S REPORT**

**ITEM NO:**

**SUBJECT: MONTHLY WATER REPORT – May 2019**

In May, RPU's total water production was 6,516 acre-feet (AF) as shown in Figures 1 and 2. RPU's annual rolling production totals by month are shown in Figure 3. In May, the peak water usage on the potable water distribution system was 65.5 million gallons per day (MGD) and occurred on May 13, 2019 as shown on Figure 4.

RPU's potable water supply, including deliveries to Western Municipal Water District (WMWD), totaled 5,480 AF, which decreased from last May by 1,095 AF. Under the Cooperative Agreement for Water Production and Conveyance with WMWD, 579 AF of potable water was wheeled to WMWD during May as shown in Figures 1 and 2. During this 2018/19 fiscal year, 2,232 AF of potable water has been wheeled to WMWD and 3,221 AF of surplus water has been delivered.

In May, RPU's Gallons Per-Capita per Day (GPCD) was 166, and its Residential Gallons Per-Capita per Day (R-GPCD) was 96. RPU's annual rolling GPCD was 177, which is below the compliance target specified in SB X7-7 (i.e. 20% reduction by 2020) of 213. RPU's annual rolling R-GPCD was 104 as shown on Figure 5.

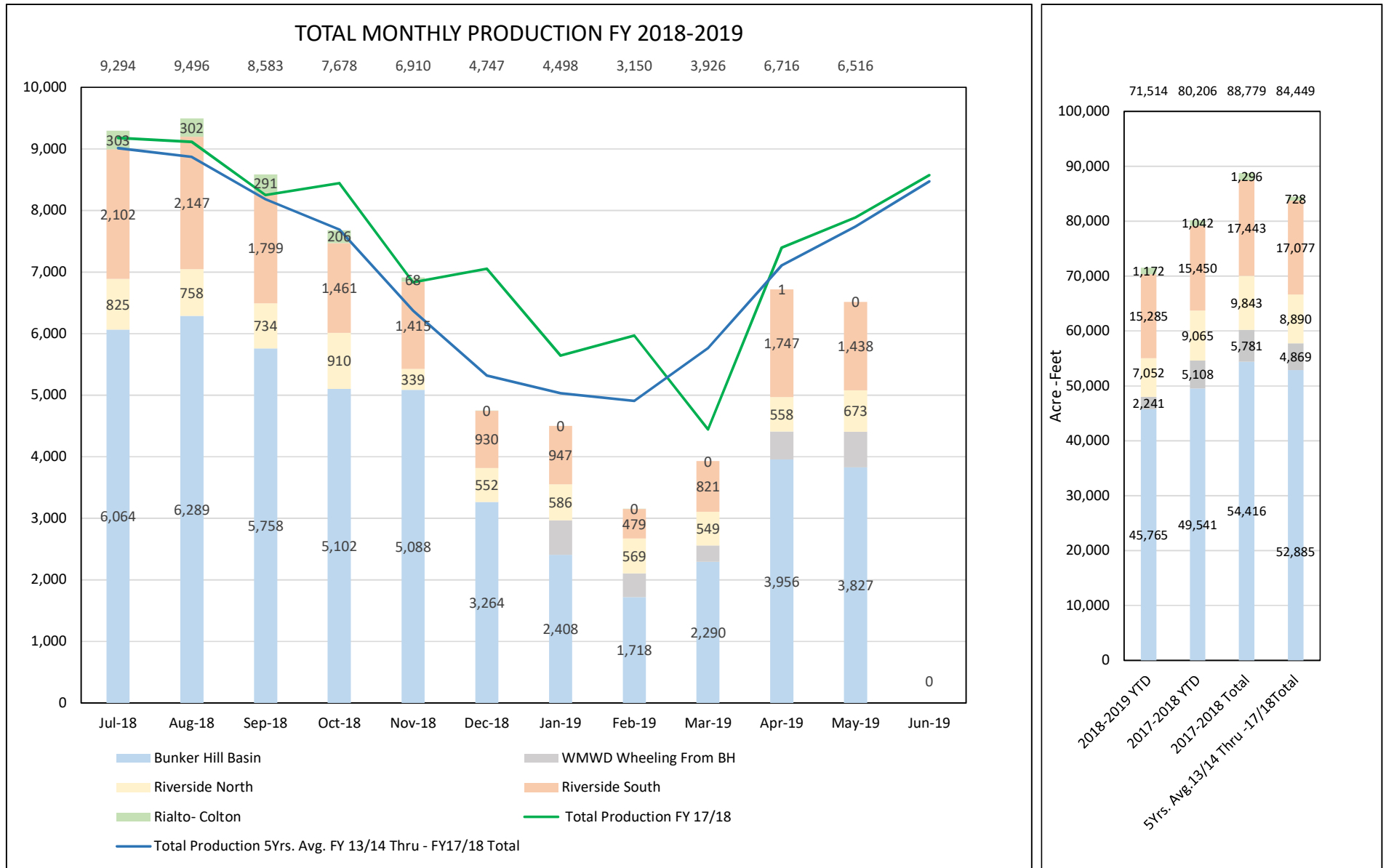
Weather conditions within the City of Riverside showed that May of 2019 was cooler by 4.3 degrees from May last year and experienced 0.72 inches of rainfall increase compared to last year.

There were no significant events for the water system in May 2019.

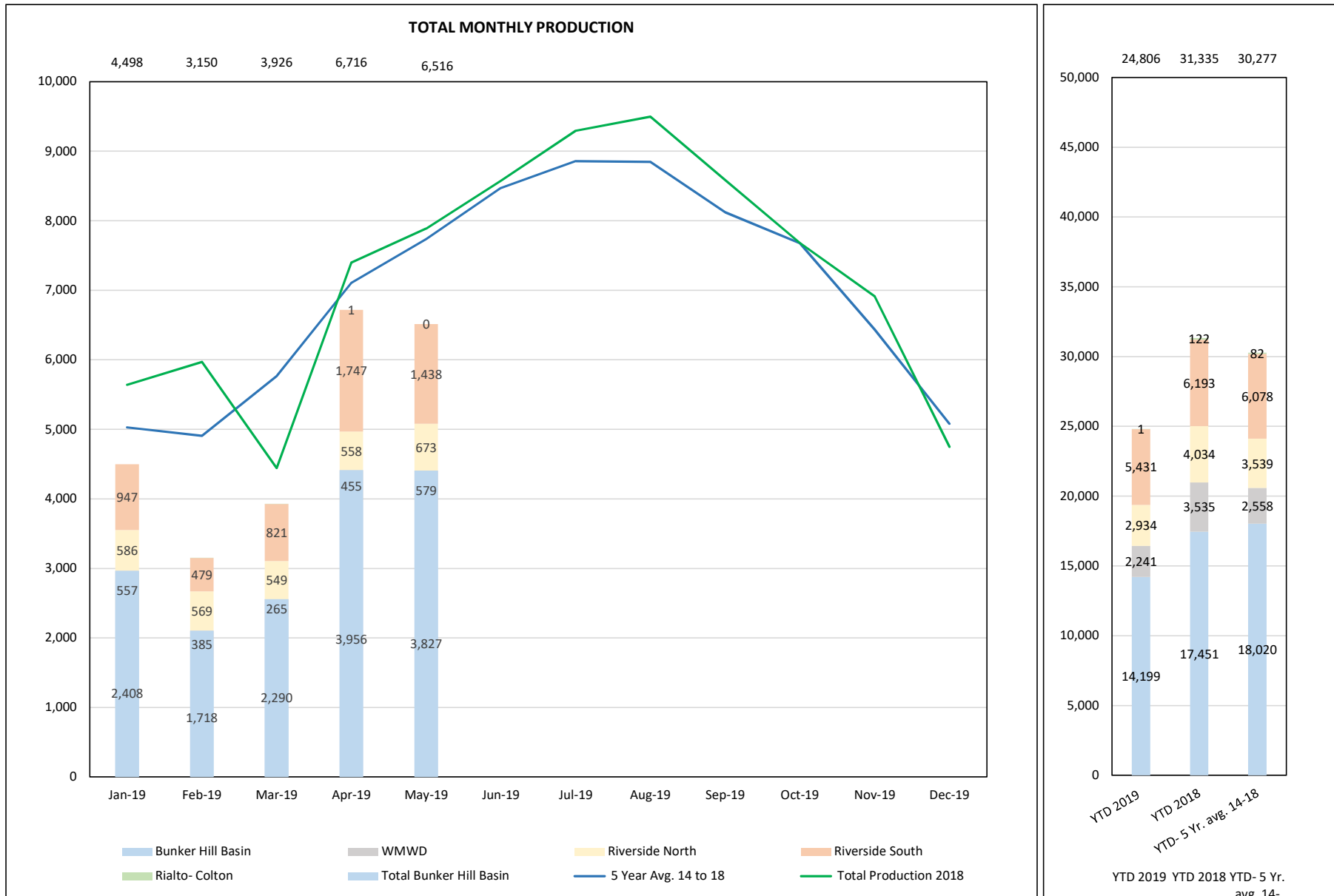
### Basin Groundwater Levels

Groundwater levels in the Bunker Hill, Rialto-Colton, and Riverside North basins are continuing to show a long-term declining trend, while groundwater levels in the Riverside South Basin remain relatively stable as shown in Figure 6. Water levels increased by 3 feet in the Bunker Hill Basin and 4 feet in the Rialto-Colton Basin as compared to May last year. Water levels increased by 17 feet in the Riverside North Basin and 2 feet in the Riverside South Basin as compared to May of last year.

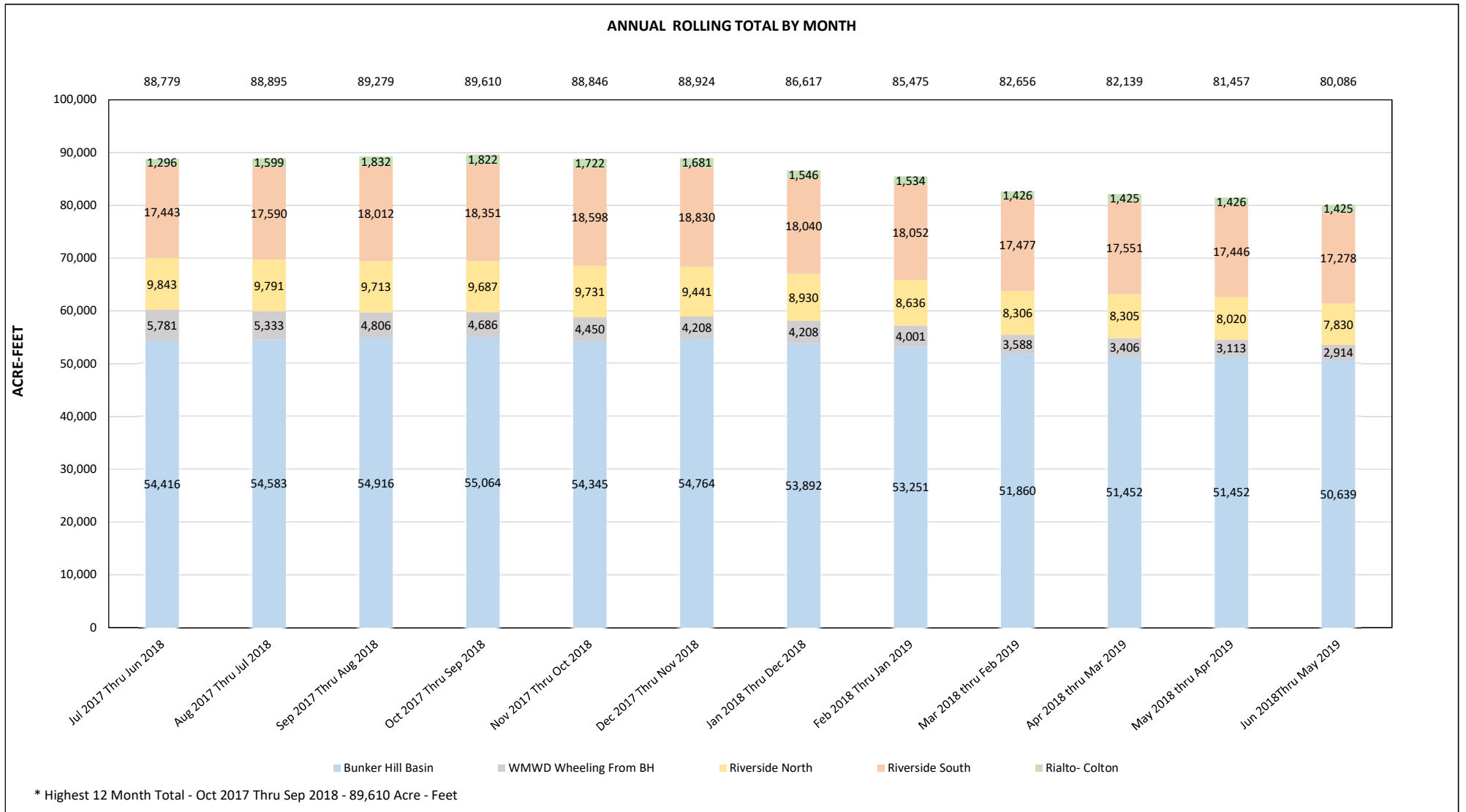
# FIGURE 1: RPU WATER - TOTAL PRODUCTION REPORT- FISCAL YEAR 2018 -2019



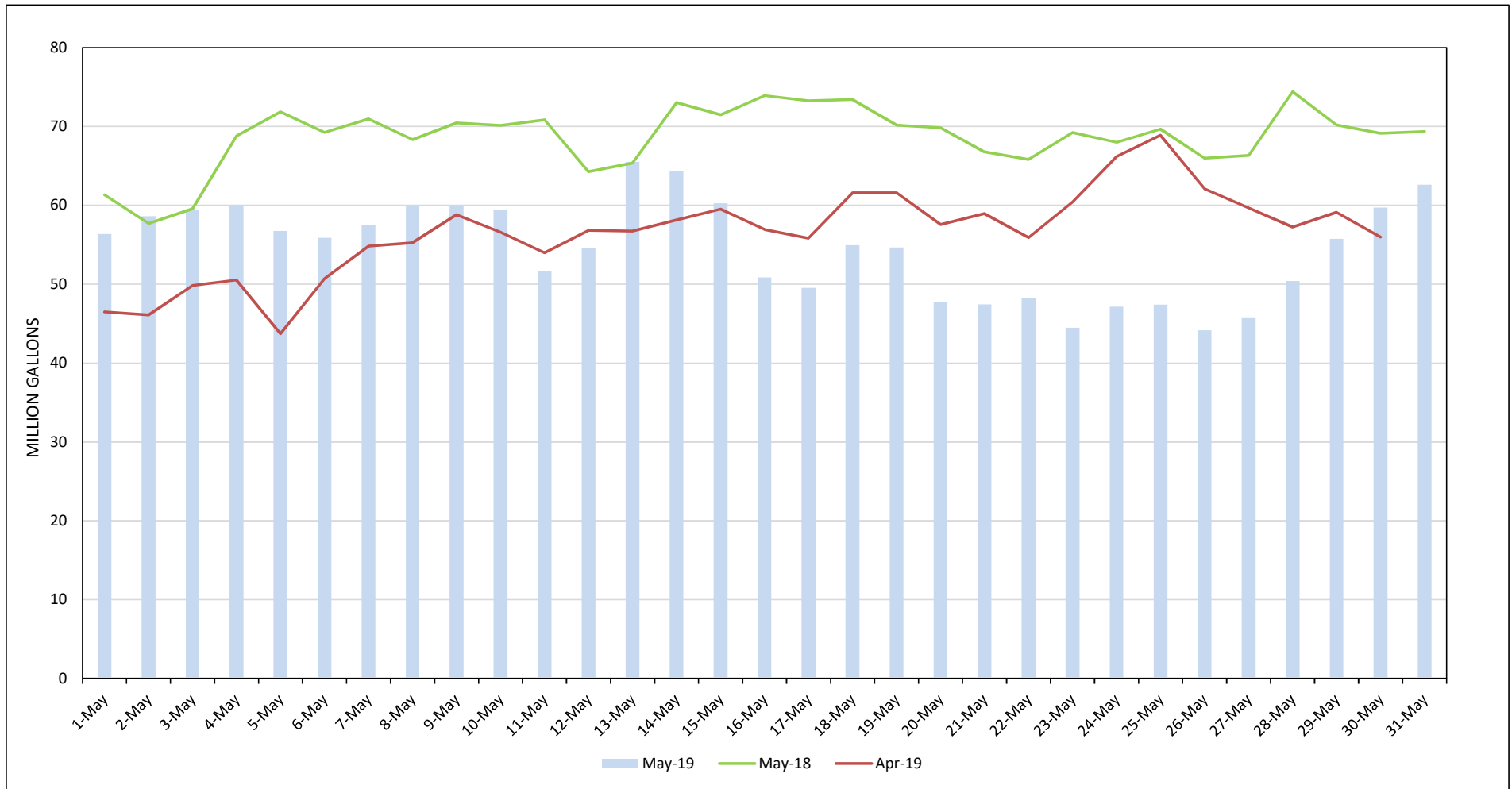
**FIGURE 2: RPU WATER - TOTAL PRODUCTION REPORT - CALENDAR YEAR 2019**



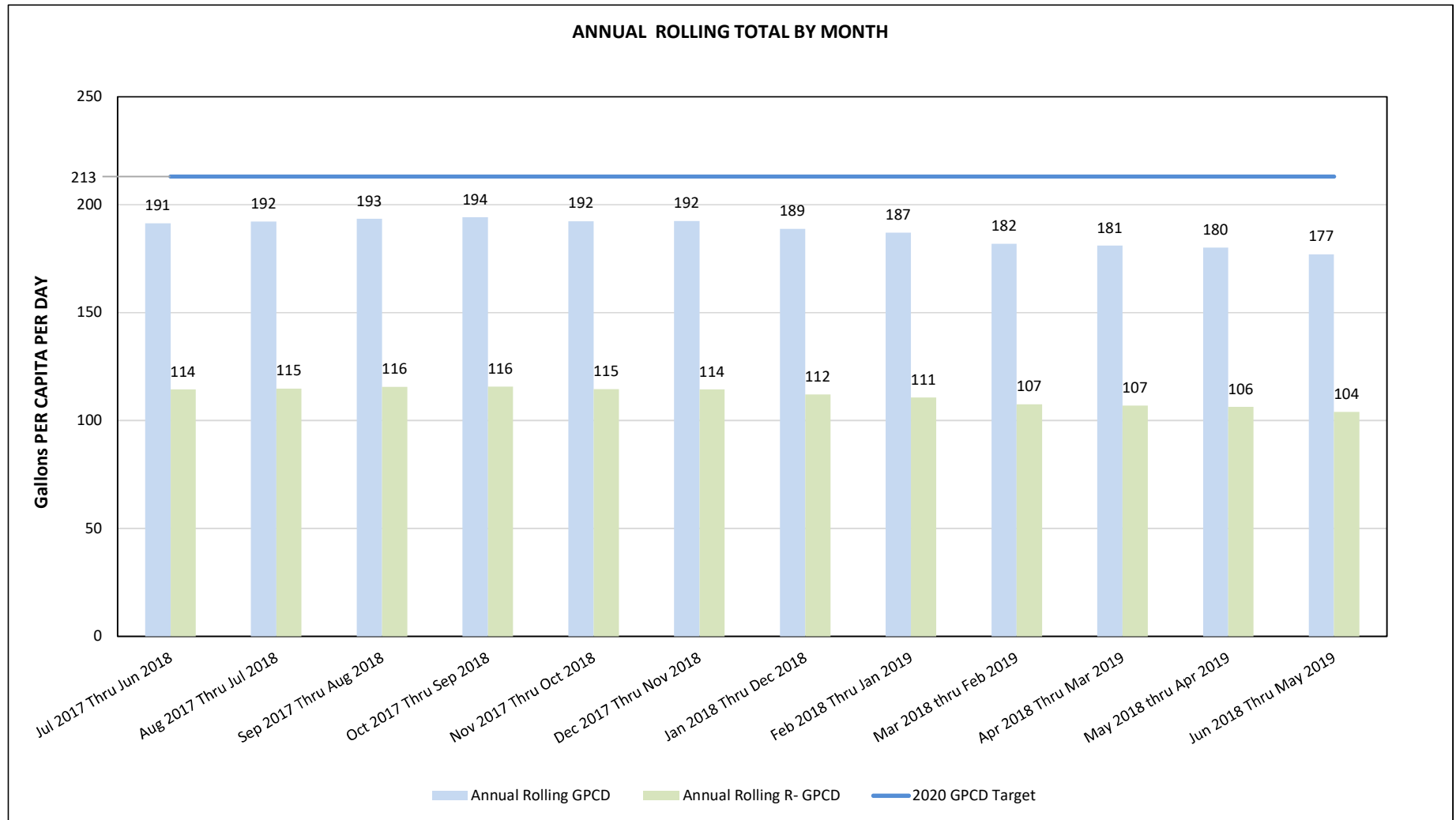
### FIGURE 3: RPU WATER - TOTAL PRODUCTION REPORT



**FIGURE 4: RPU WATER- TOTAL MONTHLY CONSUMPTION REPORT**

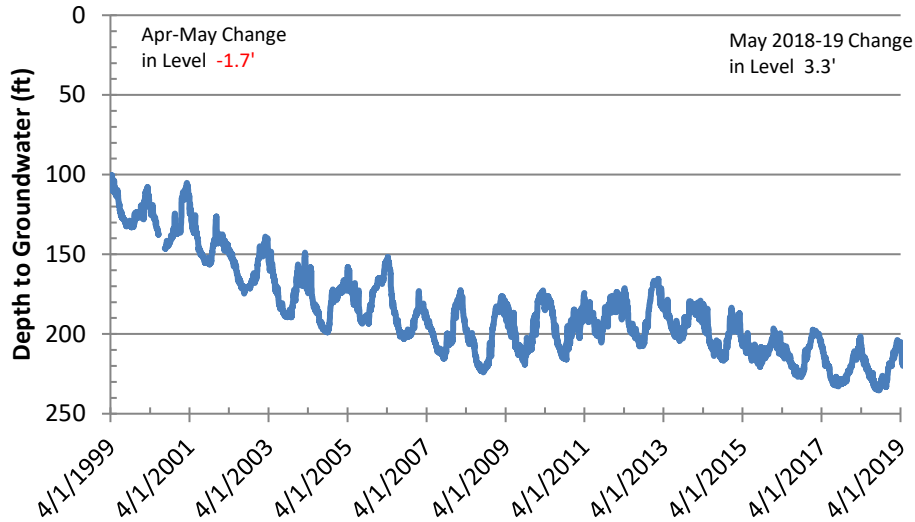


**FIGURE 5: RPU WATER - TOTAL GPCD AND R- GPCD ANNUAL ROLLING**

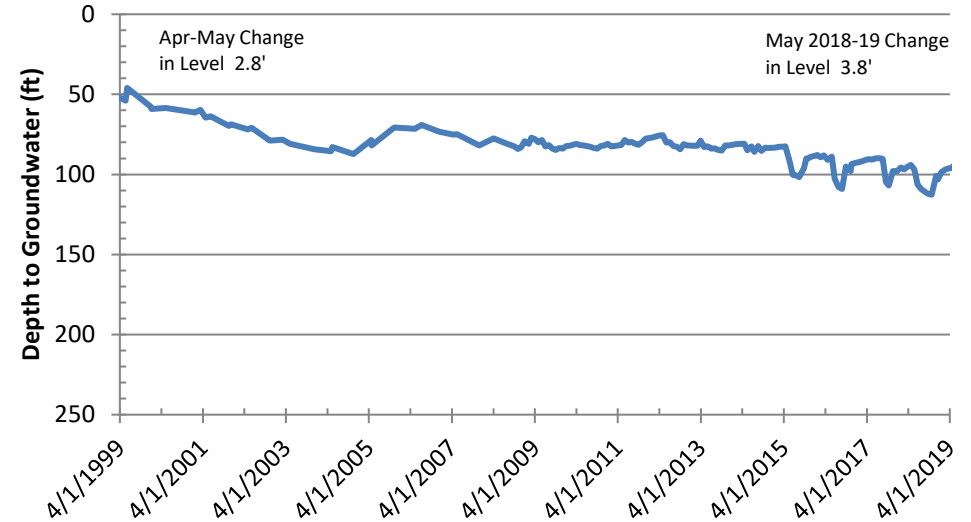


# Figure 6: Basin Groundwater Levels

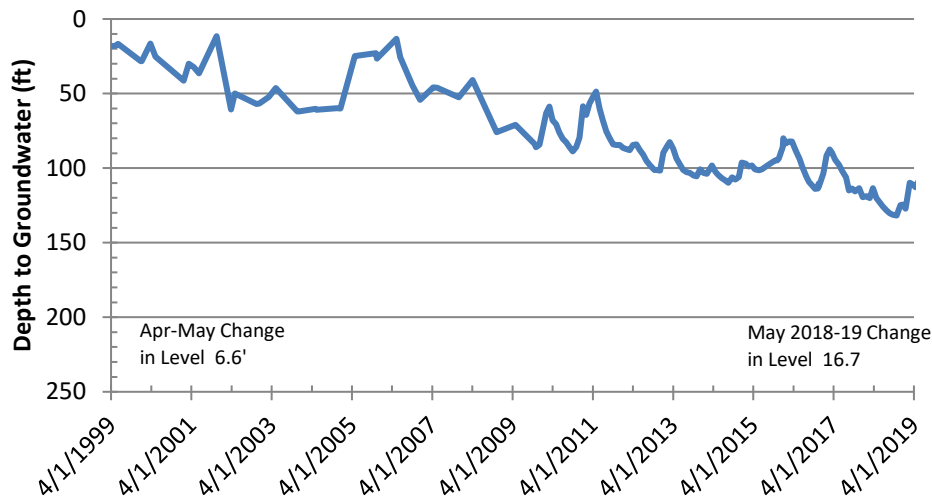
## Bunker Hill Basin Sierra High School (USGS)



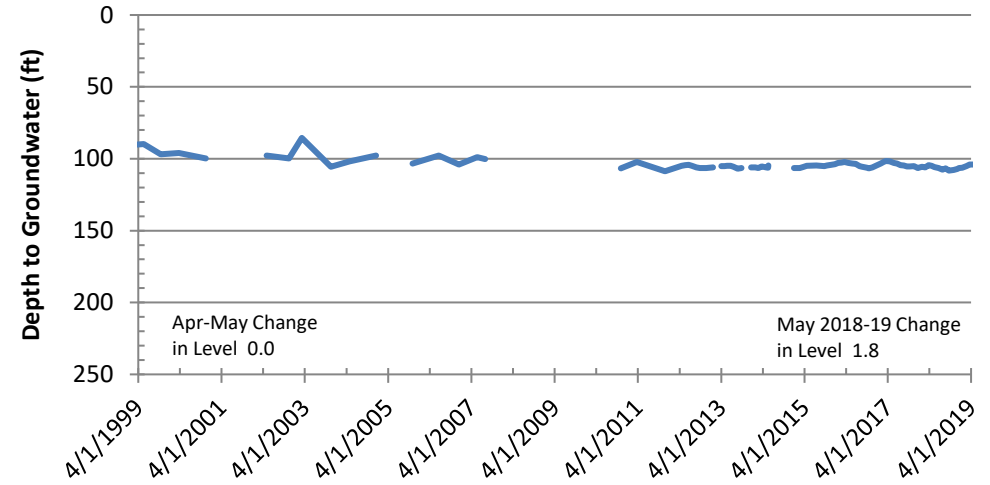
## Rialto-Colton Basin Johnson 1



## Riverside North Basin Flume 5



## Riverside South Basin Cunningham





# Figure 7: Groundwater Basin Vicinity Map

