

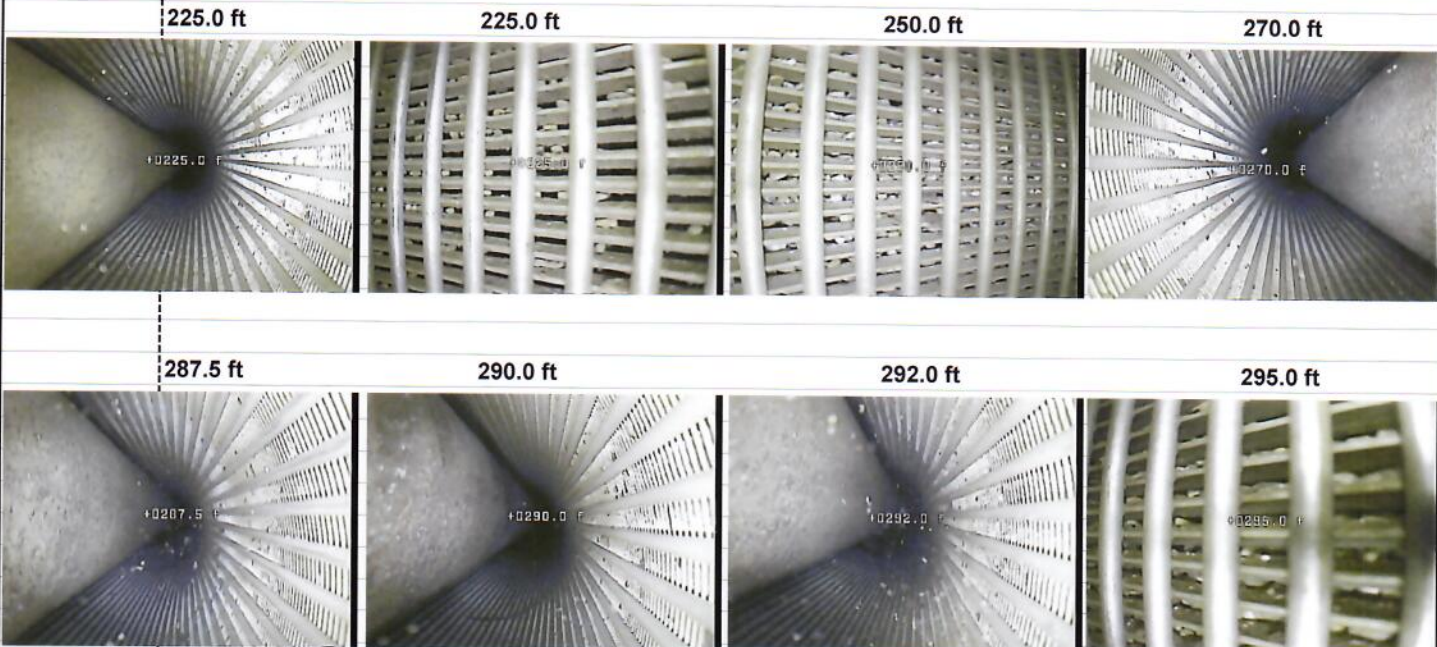
VIDEO



REPORT

Company: Tri County Pump	Date: August 30, 2018
Well Name: City of Riverside, Van Buren #2	Run Number: One
Location: South of I-215	Job Number: 001493
West end of Van Buren St.	Depth: N/A
City: Grand Terrace	Water Level: 183.1 ft
State: CA	Oil? No
Measured	Operator: LaPorte
From: Top of casing	Truck: Two
	Tool Zero: Side View Lens
	Reason for Video: Dynamic Video

Depth	Video Findings	Casing / Perforation Information	
3.0 ft	Begin recording from top of steel casing	Casing Size:	Depth
	Scale evident on casing	15.25 in	0.0 ft to T.D.
178.0 ft	Increase scale on casing	I.D. Steel	
183.1 ft	Static water level		
200.0 ft	Fine material suspended in well		
224.1 ft	Top of perforations		
	Very little gravel pack visible		
228.0 ft	Noticeable fine material entering through screen	Perforation:	
229.0 ft	Increase gravel pack visible	Wire Wrap	224.1 ft to N/A
230.0 ft	Larger material suspended in well	Screen	
287.0 ft	Increase material in suspension		
296.5 ft	Access too tight to proceed		
	End Survey		



Client Notes:	Operator Notes: Depth is referenced at side view lens. Bottom lens is 5" below side view lens.
----------------------	--