



TRANSITIONAL WATER SERVICE AGREEMENTS WITH OLIVEWOOD MEMORIAL PARK, EVERGREEN MEMORIAL HISTORIC CEMETERY, AND EVERGREEN MEMORIAL PARK & MAUSOLEUM

Resource Operations and Strategic Analytics – Customer Engagement

Board of Public Utilities
August 12, 2019

RiversidePublicUtilities.com



1

HISTORICAL CEMETERIES

1. Home of early Riverside founders
 - a. John W. North
 - b. Luther and Eliza Tibbets
 - c. Samuel C. Evans
 - d. Matthew Gage
 - e. Raymond Best
2. WA-7 "Special Metered Service" rate included historical cemeteries with intent of preserving City's historical sites
3. Evergreen managed by two entities:
 - a. Evergreen Memorial Park & Mausoleum
 - b. Evergreen Memorial Historic Cemetery



Olivewood Memorial Park, 1925
Credit: Olivewood Memorial Park



Evergreen Cemetery
Credit: Gerald Wayne Dow



2

RiversidePublicUtilities.com

RATE PLAN IMPACT ON CEMETERIES

1. May 22, 2018: City Council adopts five-year water rate plan, effective July 1, 2018
2. Cost of Service Study determined Schedule WA-7 not collecting all costs for service; changed from "Special Metered Services" to "Interruptible Irrigation Service"
3. As a result, historical cemeteries would be transitioned to WA-11 "Landscape Irrigation Metered Service" or WA-6 "Commercial and Industrial Metered Service," depending on applicability
4. RPU offered transitional water service agreements to the historic cemeteries

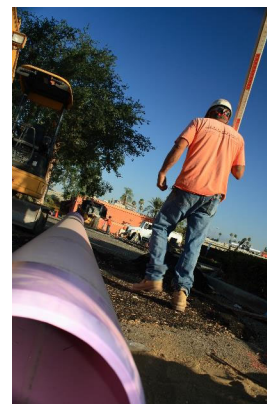
RiversidePublicUtilities.com



3

ALTERNATIVE WATER SUPPLIES

1. Cemeteries identified as prospective non-potable/recycled water customers
2. Invested in part of necessary infrastructure to take non-potable/recycled water from the City when available
3. City does not currently have sufficient infrastructure to deliver non-potable/recycled water to cemeteries
4. City has plans to develop necessary infrastructure

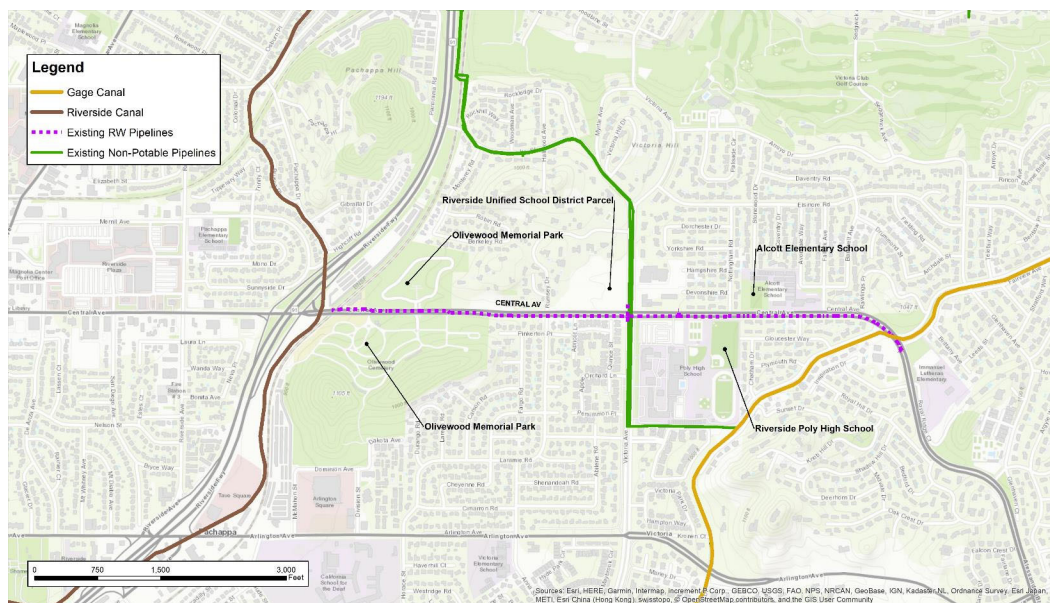


RiversidePublicUtilities.com

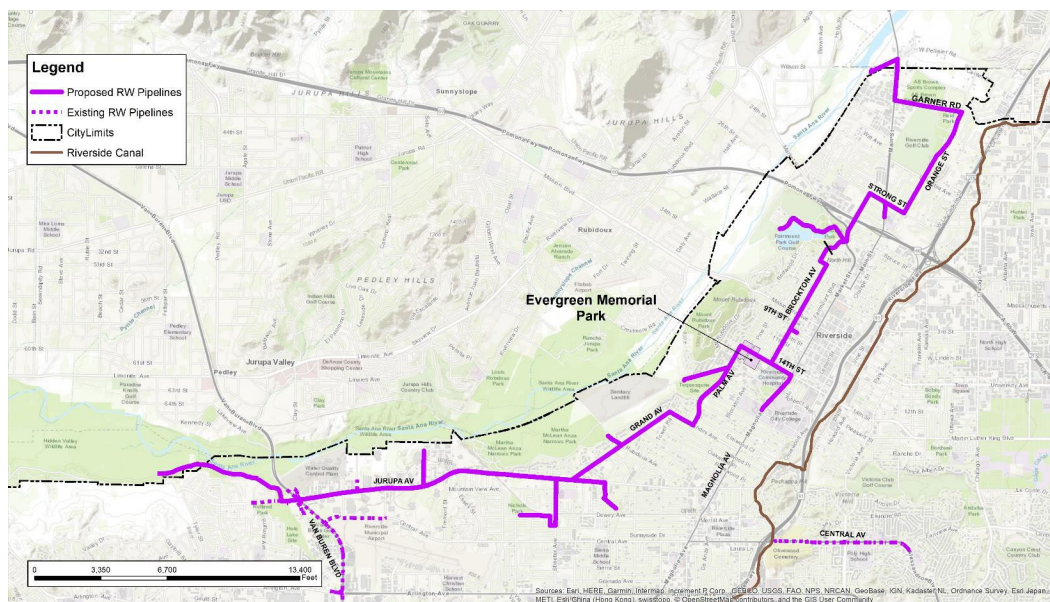


4

ALTERNATIVE WATER SUPPLIES – OLIVEWOOD



ALTERNATIVE WATER SUPPLIES – EVERGREEN



ALTERNATIVE WATER SUPPLIES

5. June 10, 2019: Board Water Committee accepted additional language be added to the Agreements to clarify requirement to take non-potable/recycled water service when available
 - a. Section 2.7: "Customer agrees that if City is able to provide recycled water service that Customer shall take such recycled water service **within a commercially reasonable time.**"
 - b. Section 6.1: "***In the event City is able to provide non-potable water service to Customer's Site, Customer shall take such non-potable water service within a commercially reasonable time.***"

OLIVEWOOD TRANSITIONAL RATE

	Quantity Rate All Usage per CCF	Customer Charge 4" Meter		Quantity Rate All Usage per CCF	Customer Charge 4" Meter
Year 1	\$ 1.15	\$ 232.95	Year 6	\$ 1.61	\$ 407.86
Year 2	\$ 1.23	\$ 266.44	Year 7	\$ 1.73	\$ 434.37
Year 3	\$ 1.31	\$ 302.52	Year 8	\$ 1.86	\$ 462.60
Year 4	\$ 1.40	\$ 340.10	Year 9	\$ 2.00	\$ 492.67
Year 5	\$ 1.50	\$ 382.97	Year 10	\$ 2.15	\$ 524.69

EVERGREEN HISTORIC AND EVERGREEN MEMORIAL TRANSITIONAL RATE

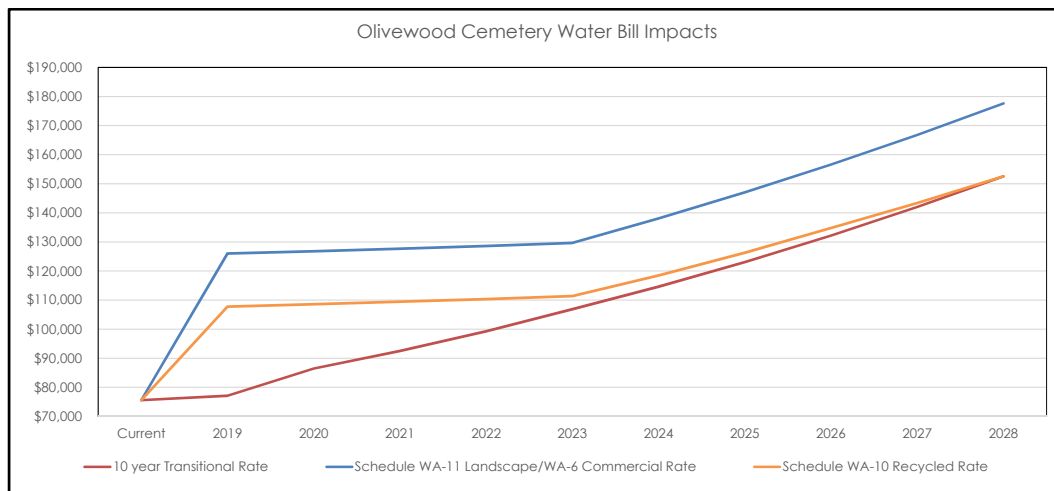
	Quantity Rate All Usage per CCF	Customer Charge 2" Meter		Quantity Rate All Usage per CCF	Customer Charge 2" Meter
Year 1	\$ 1.14	\$ 59.80	Year 6	\$ 1.57	\$ 132.74
Year 2	\$ 1.18	\$ 86.70	Year 7	\$ 1.70	\$ 141.37
Year 3	\$ 1.26	\$ 98.45	Year 8	\$ 1.84	\$ 150.56
Year 4	\$ 1.35	\$ 110.68	Year 9	\$ 1.99	\$ 160.35
Year 5	\$ 1.45	\$ 124.64	Year 10	\$ 2.15	\$ 170.77

RiversidePublicUtilities.com



9

10-YEAR TRANSITIONAL RATE

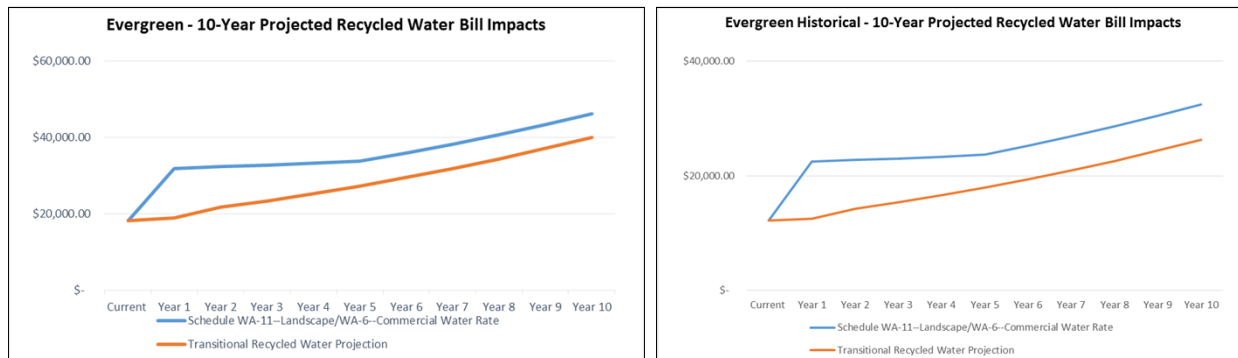


RiversidePublicUtilities.com



10

10-YEAR TRANSITIONAL RATE



RiversidePublicUtilities.com



11

ADDITIONAL COLLABORATIVE EFFORTS

1. Comprehensive water audit to identify indoor and outdoor conservation and efficiency updates
 - a. Water committee approved additional language: ***"Customer commits to implementing cost-effective and feasible conservation and efficiency updates identified in the water audit."***
2. Analyze and review potential rebate programs to help offset costs for any water and electric upgrades



12

RiversidePublicUtilities.com

RECOMMENDATIONS

That the Board of Public Utilities recommend that the City Council:

1. Approve the Transitional Water Service Agreement with Olivewood Memorial Park, as amended by the Water Committee;
2. Approve transitional water service agreements with Evergreen Memorial Historic Cemetery and with Evergreen Memorial Park & Mausoleum with similar terms to the Transitional Water Service Agreement with Olivewood Memorial Park, as amended by the Water Committee; and
3. Authorize the City Manager, or his designee, to execute transitional water service agreements with Olivewood Memorial Park, Evergreen Memorial Historic Cemetery, and Evergreen Memorial Park & Mausoleum, including making minor, non-substantive changes, sign all documents and instruments necessary to complete the transaction, and to execute amendments.