



## MEMORANDUM OF UNDERSTANDING REGARDING UPPER SANTA ANA RIVER HABITAT CONSERVATION

Riverside Public Utilities

City Council  
August 20, 2019

RiversideCA.gov

### BACKGROUND

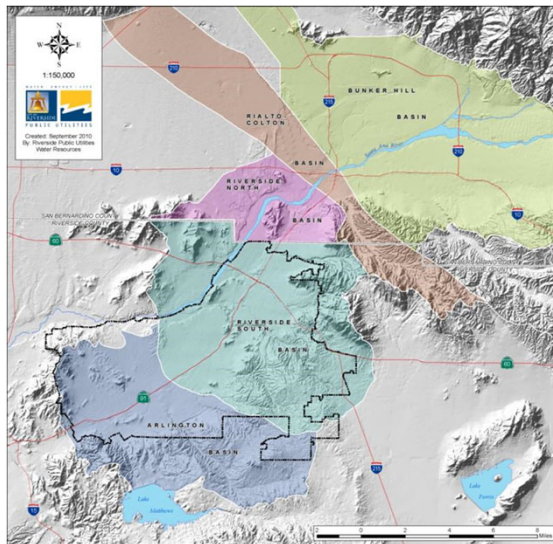
1. The City of Riverside obtains 100% of its water supply from local groundwater basins
2. The groundwater basins are replenished with stormwater both naturally and through enhancement
3. Environmental regulations have caused permitting challenges that impact groundwater management



2

RiversideCA.gov

## RIVERSIDE EXPORT WATER RIGHTS



### Extraction/Export Rights

Bunker Hill	64%
• 55,263 AFY Export	
Colton	3%
• 2,728 AFY Export	
Riverside North	13%
• 10,902 AFY Export	
Riverside South	20%
• 16,880 AFY Extraction	

**85,774 AFY Total**

3



RiversideCA.gov

## BACKGROUND (CONT.)

4. RPU is 1 of 11 partners developing the Upper Santa Ana River (SAR) Habitat Conservation Plan (HCP)
5. The HCP will provide environmental coverage for existing & future water supply projects & facilities
6. Santa Ana sucker is the primary species being mitigated

4



RiversideCA.gov

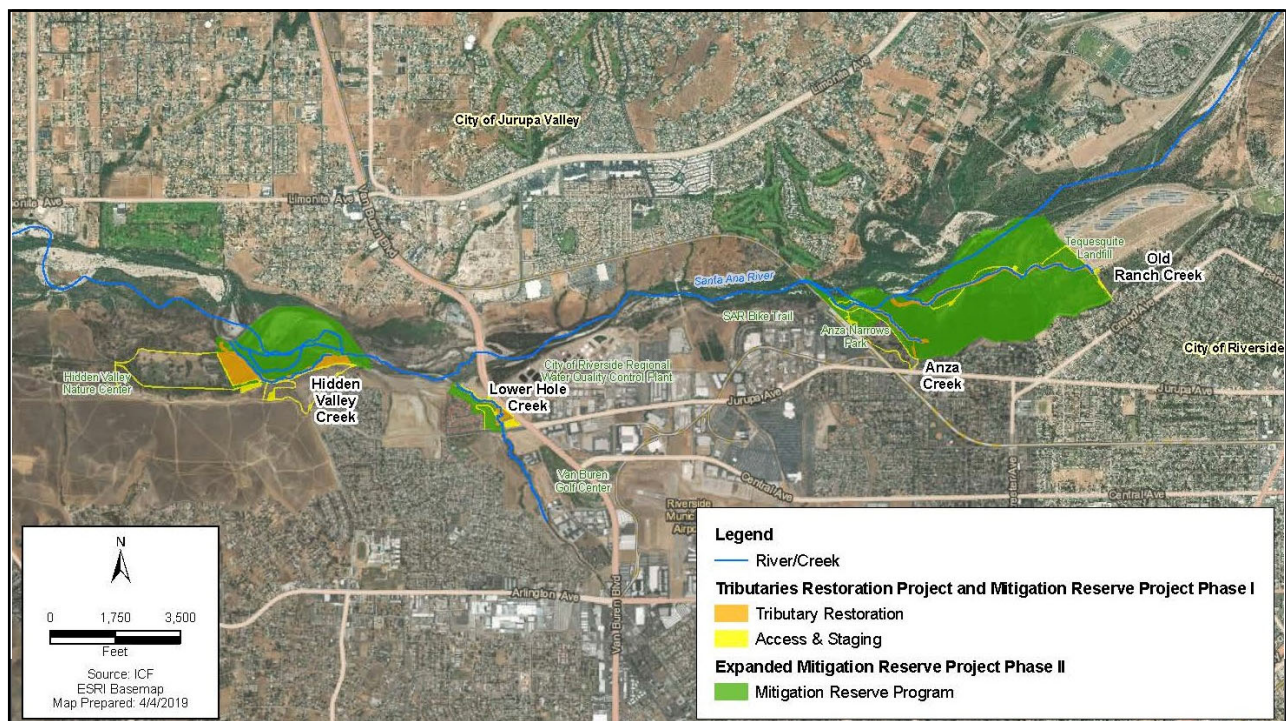
## TRIBUTARY RESTORATION PROJECT

1. San Bernardino Valley Municipal Water District (Valley District) as lead agency is pursuing restoration efforts at tributaries of the SAR within the City limits
2. Restoration will be used towards mitigation efforts
3. Valley District obtained \$4 million in prop 84 funding with \$5 million in matching funds for restoration efforts



5

RiversideCA.gov





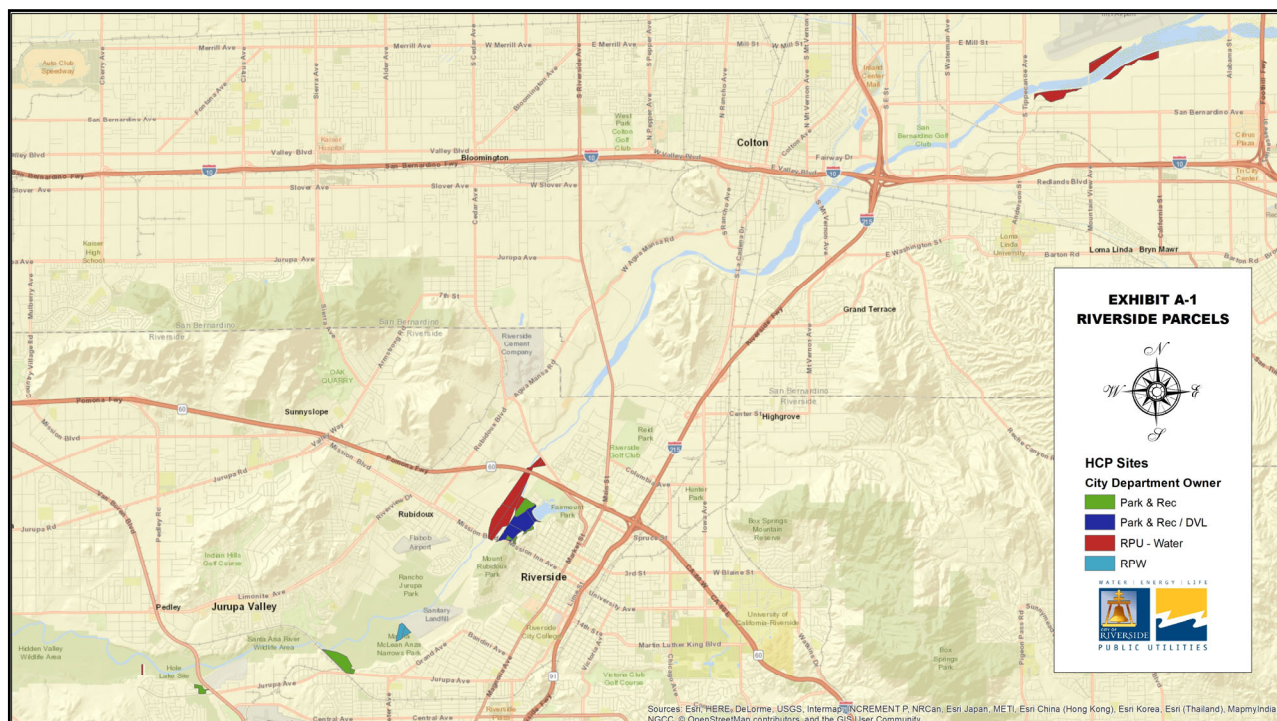
## PROPERTY

1. Public Works, Parks & Recreation, and RPU all own property within the proposed restoration area
2. Valley District is interested in working with Riverside to explore opportunities for the land and possibly enter into a mutually beneficial land agreement



7

RiversideCA.gov



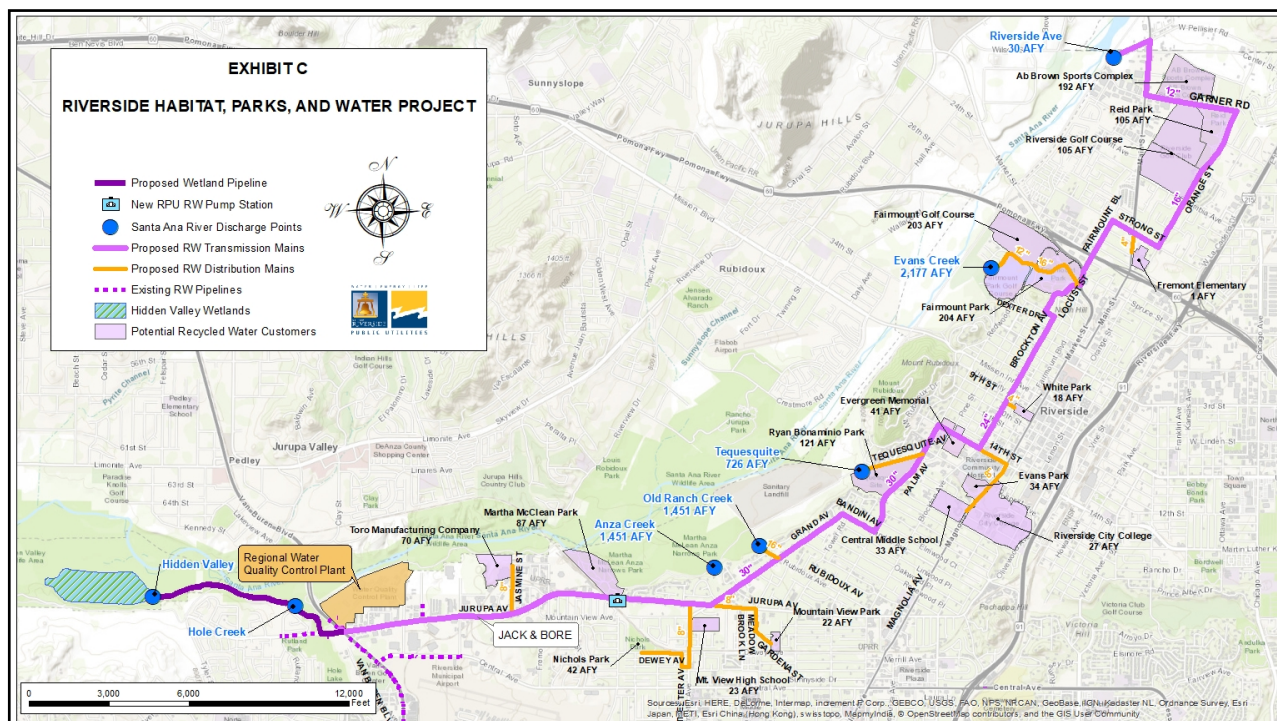
# WATER SUPPLY

1. The Restoration Project will require a water supply
2. Valley District & RPU believe there are mutually beneficial opportunities to collaborate on securing a water supply
3. Current alternatives include use of groundwater wells and/or use of recycled water through the Riverside Habitat, Parks & Water Project (RHPWP)



9

RiversideCA.gov



## PROPOSED DISCHARGES

1. Riverside Narrows Discharge (15,250 afa)
  - a. Hidden Valley Wetlands
  - b. Hidden Valley Creek
  - c. Hole Creek
  - d. RWQCP Outfall
2. Upstream Discharge (5,000 afa)
  - a. Anza Creek
  - b. Old Ranch Creek
  - c. Tequesquite Arroyo
  - d. Evans Creek
3. Recycled Water (4,750 afa)
4. Wastewater Change Petition is required



11

RiversideCA.gov

## DISCUSSION

1. MOU will provide assurances and promotes collaboration in evaluating and implementing the tributary restoration project
2. Riverside will commit to making the parcels available for Valley District to evaluate
3. Valley District will commit to evaluating the parcels and the appropriate value, providing Riverside with an opportunity for environmental credit or lease revenue



12

RiversideCA.gov

## DISCUSSION (CONT.)

4. RPU will evaluate the Riverside Habitat, Parks & Water Project and shall be the lead agency in environmental permitting
5. Valley District will support RPU in modifying its discharge commitment with the State
6. Valley District & RPU will work in good faith to develop an in-lieu water exchange to provide the HCP with a water supply in exchange for RPU to increase export rights from Bunker Hill



13

RiversideCA.gov

## DISCUSSION (CONT.)

7. Valley District will evaluate an accounting approach that the Watermaster would utilize to allow RPU to expand its production rights through the in-lieu exchange
8. Information developed by RPU & Valley District will be brought to each respective Board and Council for consideration prior to any commitments made



14

RiversideCA.gov

## RECOMMENDATION

That the City Council approve the Memorandum of Understanding with San Bernardino Valley Municipal Water District Regarding Upper Santa Ana River Habitat Conservation.

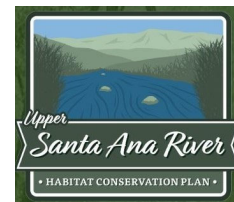


15

RiversideCA.gov

## HCP PARTNERS

1. San Bernardino Valley Municipal Water District
2. Riverside Public Utilities
3. Western Municipal Water District
4. San Bernardino Valley Water Conservation District
5. San Bernardino City Municipal Water Department
6. City of Rialto
7. East Valley Water District
8. West Valley Water District
9. Inland Empire Utilities Agency
10. Orange County Water District
11. Metropolitan Water District
12. Southern California Edison (Included in Permit, not a paying member)



16

RiversideCA.gov



## COVERED SPECIES

- |                                  |                                    |
|----------------------------------|------------------------------------|
| 1. Slender-horned spineflower    | 12. California glossy snake        |
| 2. Santa Ana River woolly-star   | 13. Southwestern willow flycatcher |
| 3. Delhi Sands flower-loving fly | 14. Least Bell's vireo             |
| 4. Santa Ana sucker              | 15. Tricolored blackbird           |
| 5. Arroyo chub                   | 16. Western yellow-billed cuckoo   |
| 6. Santa Ana speckled dace       | 17. Yellow-breasted chat           |
| 7. Arroyo toad                   | 18. Burrowing owl                  |
| 8. Mountain yellow-legged frog   | 19. Cactus wren                    |
| 9. Western pond turtle           | 20. Coastal California gnatcatcher |
| 10. Western spadefoot            | 21. San Bernardino kangaroo rat    |
| 11. Sough coast garter snake     | 22. Los Angeles pocket mouse       |



17

RiversideCA.gov

## RPU's Covered Activities

- |   |   |
|---|---|
| 1. Riverside Habitat, Parks & Water Project             | 9. Waterman Pipeline Upsizing Project             |
| 2. Riverside North Aquifer Storage and Recovery Project | 10. Flume & Riverside Canal Pipeline Replacements |
| 3. Drainage A Modification (RNASR)                      | 11. Future Gage Canal Transmission Main           |
| 4. Riverside Basin Recharge Project                     | 12. Weed Abatement & Property Maintenance         |
| 5. Bunker Hill Groundwater Basin Wells and Pipelines    | 13. Facilities Maintenance                        |
| 6. North Waterman Treatment Plant                       | 14. Jurupa Ditch Company                          |
| 7. Various RPU Solar Projects                           | 15. Pipeline crossing from RIX                    |
| 8. Gage Canal Transmission Main Replacement             |   |



18

RiversideCA.gov

## PROPERTIES

HCP Location	APN	Total APN Area (acres)	City of Riverside, Department Property Owner	Comment
Hole Creek (Lower)	155060027	7.7	Park & Rec	Portion of property has an existing easement with RCRC
Hidden Valley	163290004	2.0	RPU - Water	
Anza Drain	187210008	36.6	Park & Rec	Developed park areas not applicable for habitat use
Anza Drain	187220028	2.3	Park & Rec	Developed park areas not applicable for habitat use
Anza Drain	187210007	0.6	Park & Rec	Developed park areas not applicable for habitat use
Old Farm Road	187130001	5.7	RPW	
Old Farm Road	186270008	10.6	RPW	
Evans Drain	207070001	9.1	Park & Rec	Developed park areas not applicable for habitat use
Evans Drain	207050002	37.6	Park & Rec	
Evans Drain	207190007	23.0	Park & Rec	Developed park areas not applicable for habitat use
Evans Drain	207190009	0.4	Park & Rec	
Evans Drain	207060012	20.7	Park & Rec	
Evans Drain	207042001	1.3	Park & Rec	
Evans Drain	207050003	1.0	Park & Rec	
Evans Drain	207021007	0.5	Park & Rec	
Evans Drain	207190003	2.0	Park & Rec	
Evans Drain	207021003	0.7	Park & Rec	
Evans Drain	207021002	0.5	Park & Rec	
Evans Drain	207021001	0.5	Park & Rec	
Evans Drain	207021004	0.7	Park & Rec	
Santa Ana River	179340004	31.0	RPU - Water	
Santa Ana River	179340003	30.9	RPU - Water	
Santa Ana River	207060001	6.9	RPU - Water	
Santa Ana River	179310003	10.9	RPU - Water	
Santa Ana River	179310002	38.0	RPU - Water	
Santa Ana River	178290010	3.4	RPU - Water	
Santa Ana River	178290008	8.2	RPU - Water	
Upland Habitat	28025153	31.7	RPU - Water	Developed facilities are not applicable for habitat use
Upland Habitat	29201140	27.3	RPU - Water	
Upland Habitat	29201132	1.9	RPU - Water	
Upland Habitat	16772103	1.5	RPU - Water	
Upland Habitat	16770104	0.1	RPU - Water	
Upland Habitat	29201143	27.8	RPU - Water	
Upland Habitat	16770104	1.8	RPU - Water	
Upland Habitat	16767203	2.6	RPU - Water	

### Property Impacted

1. RPU Total
  - a. 226 acres
2. RPW Total
  - a. 16 acres
3. Parks & Rec
  - a. 145 acres\* (value includes parcels off limits to HCP)

19

RiversideCA.gov