



TRANSITIONAL WATER SERVICE AGREEMENTS WITH OLIVEWOOD MEMORIAL PARK, EVERGREEN MEMORIAL HISTORIC CEMETERY, AND EVERGREEN MEMORIAL PARK & MAUSOLEUM

Public Utilities Department

City Council
September 17, 2019

RiversideCA.gov

HISTORICAL CEMETERIES

1. Home of early Riverside founders
 - a. John W. North
 - b. Luther and Eliza Tibbets
 - c. Samuel C. Evans
 - d. Matthew Gage
 - e. Raymond Best
2. WA-7 "Special Metered Service" rate included historical cemeteries with intent of preserving City's historical sites
3. Evergreen managed by two entities:
 - a. Evergreen Memorial Park & Mausoleum
 - b. Evergreen Memorial Historic Cemetery



Olivewood Memorial Park, 1925
Credit: Olivewood Memorial Park



Evergreen Cemetery
Credit: Gerald Wayne Dow

2



RiversideCA.gov

RATE PLAN IMPACT ON CEMETERIES

1. May 22, 2018: City Council adopts five-year water rate plan, effective July 1, 2018
2. Cost of Service Study determined Schedule WA-7 not collecting all costs for service; changed from "Special Metered Services" to "Interruptible Irrigation Service"
3. As a result, historical cemeteries would be transitioned to WA-11 "Landscape Irrigation Metered Service" or WA-6 "Commercial and Industrial Metered Service," depending on applicability
4. RPU offered transitional water service agreements to the historic cemeteries

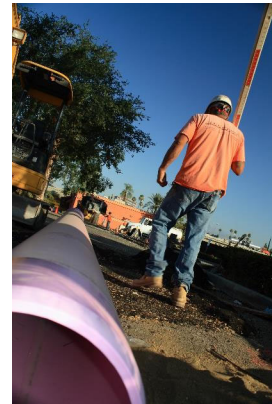


3

RiversideCA.gov

ALTERNATIVE WATER SUPPLIES

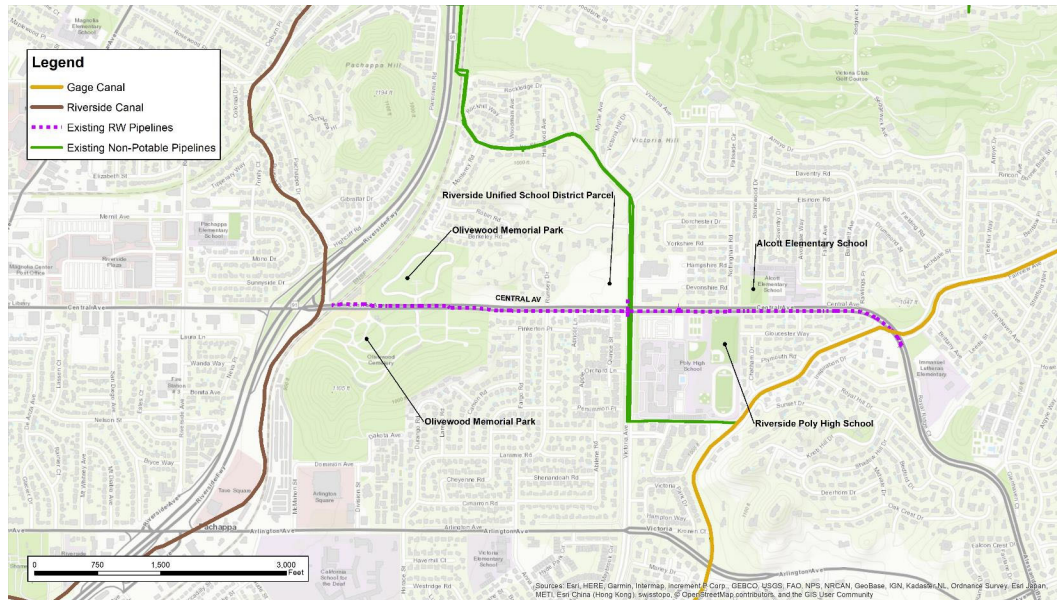
1. Cemeteries identified as prospective non-potable/recycled water customers
2. Invested in part of necessary infrastructure to take non-potable/recycled water from the City when available
3. City does not currently have sufficient infrastructure to deliver non-potable/recycled water to cemeteries
4. City has plans to develop necessary infrastructure



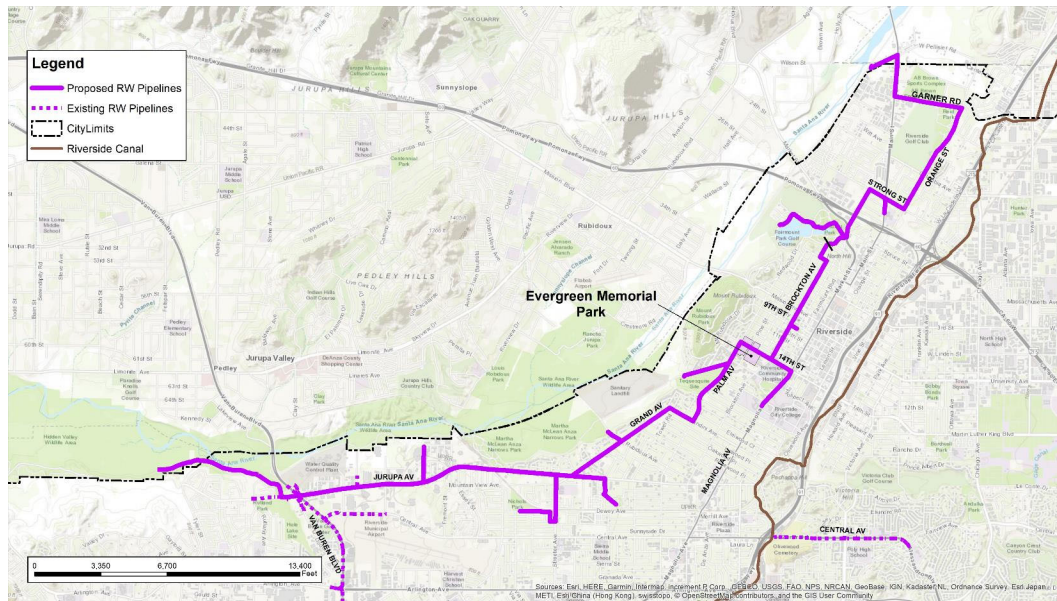
4

RiversideCA.gov

ALTERNATIVE WATER SUPPLIES – OLIVEWOOD



ALTERNATIVE WATER SUPPLIES – EVERGREEN



ALTERNATIVE WATER SUPPLIES

5. June 10, 2019 Board Water Committee accepted additional language be added to the Agreements to clarify requirement to take non-potable/recycled water service when available
 - a. Section 2.7: "Customer agrees that if City is able to provide recycled water service that Customer shall take such recycled water service **within a commercially reasonable time.**"
 - b. Section 6.1: "***In the event City is able to provide non-potable water service to Customer's Site, Customer shall take such non-potable water service within a commercially reasonable time.***"



7

RiversideCA.gov

OLIVEWOOD TRANSITIONAL RATE

| | Quantity Rate All Usage per CCF | | Customer Charge 4" Meter | | Quantity Rate All Usage per CCF | | Customer Charge 4" Meter |
|--------|------------------------------------|------|-----------------------------|---------|------------------------------------|------|-----------------------------|
| Year 1 | \$ | 1.15 | \$ 232.95 | Year 6 | \$ | 1.61 | \$ 407.86 |
| Year 2 | \$ | 1.23 | \$ 266.44 | Year 7 | \$ | 1.73 | \$ 434.37 |
| Year 3 | \$ | 1.31 | \$ 302.52 | Year 8 | \$ | 1.86 | \$ 462.60 |
| Year 4 | \$ | 1.40 | \$ 340.10 | Year 9 | \$ | 2.00 | \$ 492.67 |
| Year 5 | \$ | 1.50 | \$ 382.97 | Year 10 | \$ | 2.15 | \$ 524.69 |



8

RiversideCA.gov

EVERGREEN HISTORIC AND EVERGREEN MEMORIAL TRANSITIONAL RATE

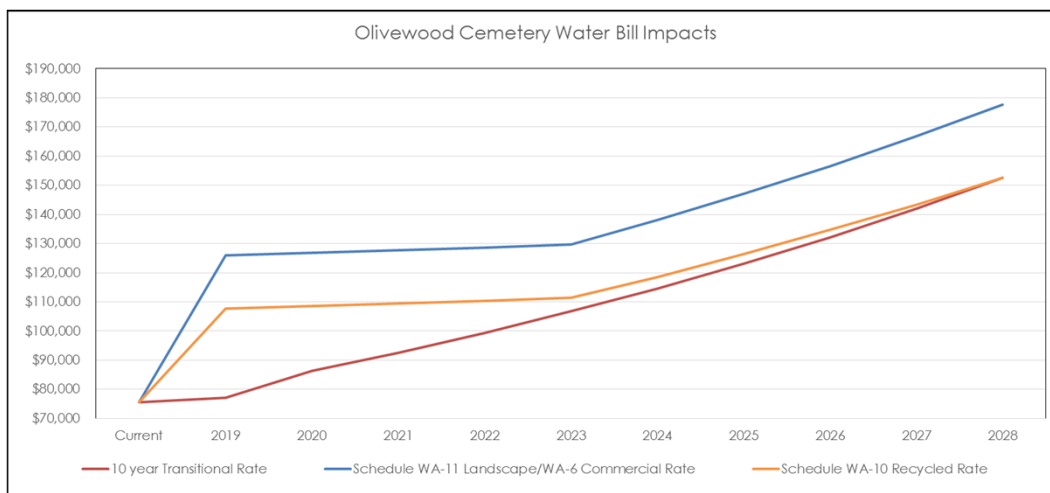
| | Quantity Rate All Usage per CCF | Customer Charge 2" Meter | | Quantity Rate All Usage per CCF | Customer Charge 2" Meter |
|--------|---------------------------------|--------------------------|---------|---------------------------------|--------------------------|
| Year 1 | \$ 1.14 | \$ 59.80 | Year 6 | \$ 1.57 | \$ 132.74 |
| Year 2 | \$ 1.18 | \$ 86.70 | Year 7 | \$ 1.70 | \$ 141.37 |
| Year 3 | \$ 1.26 | \$ 98.45 | Year 8 | \$ 1.84 | \$ 150.56 |
| Year 4 | \$ 1.35 | \$ 110.68 | Year 9 | \$ 1.99 | \$ 160.35 |
| Year 5 | \$ 1.45 | \$ 124.64 | Year 10 | \$ 2.15 | \$ 170.77 |



9

RiversideCA.gov

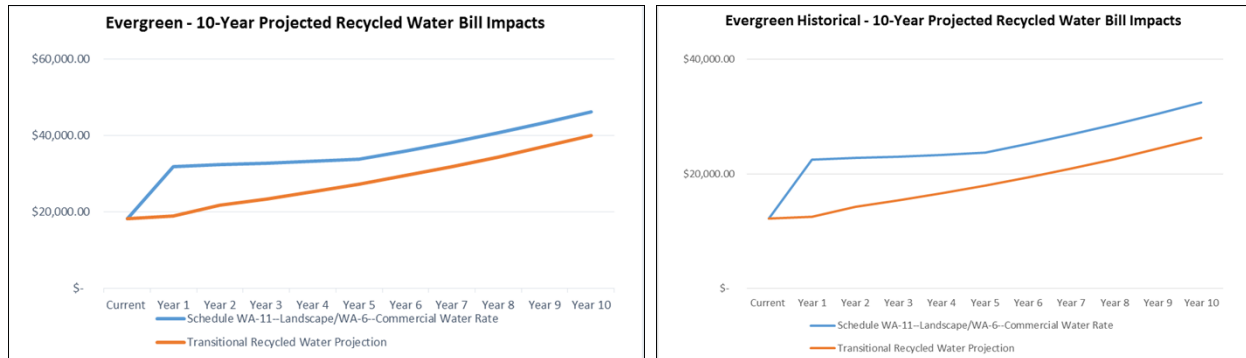
10-YEAR TRANSITIONAL RATE



10

RiversideCA.gov

10-YEAR TRANSITIONAL RATE



11

RiversideCA.gov

ADDITIONAL COLLABORATIVE EFFORTS

1. Comprehensive water audit to identify indoor and outdoor conservation and efficiency updates
 - a. Water committee approved additional language: ***"Customer commits to implementing cost-effective and feasible conservation and efficiency updates identified in the water audit."***
2. Analyze and review potential rebate programs to help offset costs for any water and electric upgrades



12

RiversideCA.gov

RECOMMENDATIONS

That the City Council:

1. Approve the Transitional Water Service Agreement with Olivewood Memorial Park, as amended by the Board's Water Committee;
2. Approve transitional water service agreements with Evergreen Memorial Historic Cemetery and with Evergreen Memorial Park & Mausoleum with similar terms to the Transitional Water Service Agreement with Olivewood Memorial Park, as amended by the Board's Water Committee; and
3. Authorize the City Manager, or designee, to execute transitional water service agreements with Olivewood Memorial Park, Evergreen Memorial Historic Cemetery, and Evergreen Memorial Park & Mausoleum, including making minor, non-substantive changes, sign all documents and instruments necessary to complete the transaction, and to execute amendments.



13

RiversideCA.gov