



# Comprehensive Master Plan

## Parks, Recreation and Community Services Department

Park and Recreation Commission  
October 21, 2019

RiversideCA.gov

## COMPREHENSIVE PARK, RECREATION & COMMUNITY SERVICES

- **Guide and implementation tool** for the **management** and **development** of parks and recreation facilities and programs.
- Identifies **local** community needs
- Updates the general plan policy elements
- Offers **recommendations** to support the **Local Riverside Community**

“Alleviate parkland shortage, provide parks in underserved areas, and strive to preserve natural resources and open space in a cost-effective manner to enhance the living environment for all residents.”

- General Plan



2

RiversideCA.gov

## PROCESS



3

RiversideCA.gov

## EXISTING CONDITIONS

- 59 parks
- 2,519 acres of developed parkland
- 12 community centers
- 3 senior centers
- 8 swimming pools (1 joint use)
- 23.7 miles of trails
- 94.5 miles of bike lanes



4

RiversideCA.gov

## COMMUNITY OUTREACH

- Stakeholder Interviews
- Focus Groups
- Community Workshop
- Sports Organization Questionnaire
- ESRI Online Survey
- Telephone Survey



5

RiversideCA.gov

## COMMUNITY OUTREACH STAKEHOLDER INTERVIEWS

- 18 executive interviews
- Adequate resources / infrastructure/ funding/ and addressing the rising deferred maintenance condition within the parks.
- Concerns about homelessness, outreach to disadvantages communities, and lack of facilities
- Homelessness and afterschool programs are underserved the most; additionally, there is a need for more music, arts, and cultural based programming
- Pool/ aquatic facility west of Arlington. Other mentions included sports facilities, trails, and a senior facility at Orange Crest.



6

RiversideCA.gov

## COMMUNITY OUTREACH FOCUS GROUPS

- Five Focus Groups
- Facility Mentions: More shade structures, Improved trail facilities, Additional sports facilities /parking, Additional Community Centers, Homeless shelters
- Program Mentions: Sports training programs, Nature / outdoor educational programs, Transportation programs, Community outreach programs

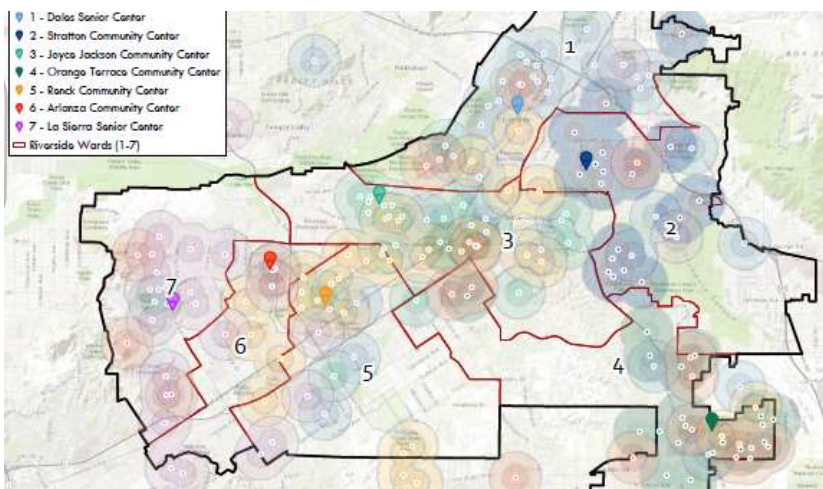


7

RiversideCA.gov

## COMMUNITY OUTREACH WORKSHOPS

- 1 - Dolan Senior Center
- 2 - Stratton Community Center
- 3 - Joyce Jackson Community Center
- 4 - Orange Terrace Community Center
- 5 - Randi Community Center
- 6 - Arlanza Community Center
- 7 - La Sierra Senior Center
- Riverside Words (1-7)



- 7 Community Workshops (one in each ward)
- Issues: Homelessness, Safety / Crime, Traffic and Parking
- Facilities: Pools / Heated Pool Facilities, Restrooms, Trails, Shade, Modernizing Facilities
- Programs: Patrolling / Security / Ranger Program, Pool Activities, Nutritional Programs, Programs offered Online



8

RiversideCA.gov

## COMMUNITY OUTREACH SPORTS ORGS.



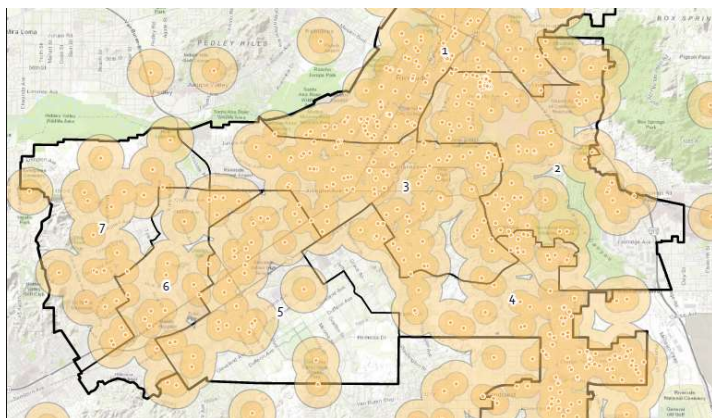
- 48 Sports Organization Reviewed and Analyzed
  - Percentage of resident players
  - Size of teams
  - Number of players
  - Seasonality
  - Field Turnovers



9

RiversideCA.gov

## COMMUNITY OUTREACH ONLINE SURVEY



- 633 responses (571 identifying themselves as residents)
- Geolocated / Citywide distribution
- Questions on program and facility usage, satisfaction, and desires.



10

RiversideCA.gov

## COMMUNITY OUTREACH TELEPHONE SURVEY

- 300 completed surveys representing over 900 residents
- Conducted in English and Spanish
- 2002 and 2018 data collected and reviewed



11

RiversideCA.gov

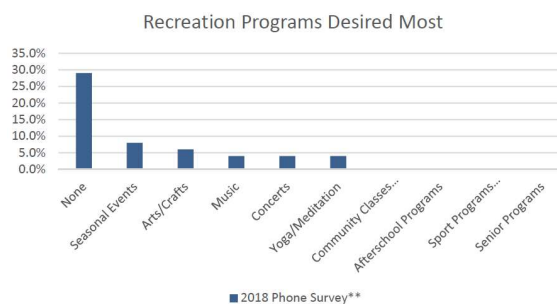
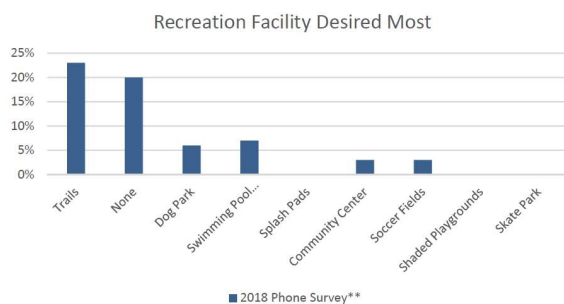
## COMMUNITY OUTREACH ONLINE SURVEY



12

RiversideCA.gov

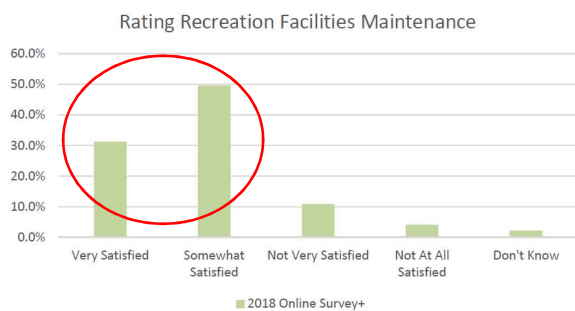
## COMMUNITY OUTREACH TELEPHONE SURVEY



13

RiversideCA.gov

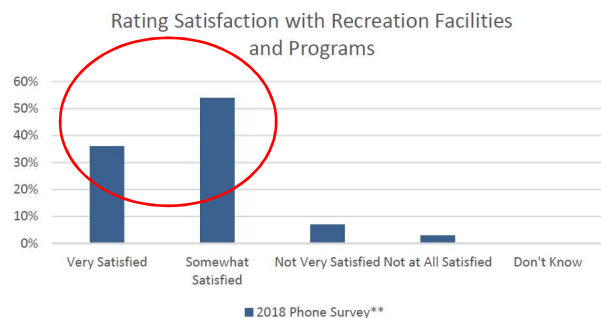
## COMMUNITY OUTREACH ONLINE SURVEY



14

RiversideCA.gov

## COMMUNITY OUTREACH TELEPHONE SURVEY



15

RiversideCA.gov

## NEEDS ANALYSIS



How many Organized Sports Fields are Needed?



Are Neighborhood Parks Conveniently and Appropriately Distributed throughout the City?



What are the top priority facility needs for Riverside?



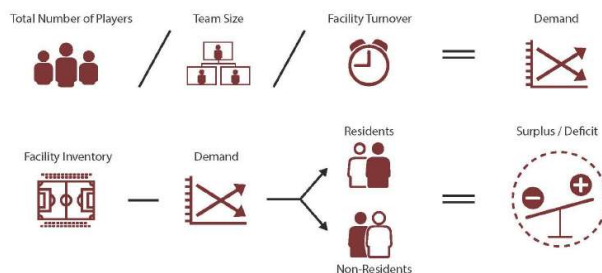
16

RiversideCA.gov



# NEEDS ANALYSIS

## HOW MANY ORGANIZED SPORTS FIELDS ARE NEEDED?



Needs Analysis Considering Demand from All Sports Organization Players Using Riverside Facilities

Facility		Facility Need Ratio - City of Riverside	2018 Needs	Existing City Facilities	Surplus / Deficit (-)	School Facilities Available	Other Facilities Available*	Total Facilities Available	Total Surplus/Deficit(-)
Soccer	Organized Adult	1/ 23402 pop.	13.9	13.5	-0.4	13	10	36.5	22.6
	Organized Youth	1/ 17646 pop.	18.5	2.5	-16.0	41	12	55.5	37.0
Football	Organized Adult	1/ 66762 pop.	4.9	4	-0.9	9	0	13	8.1
	Organized Youth	1/ 17842 pop.	18.3	18	-0.3	3	1	22.5	3.7
Baseball	Organized Adult	1/ 28957 pop.	11.3	8.5	-2.8	14	0	22.5	11.2
	Organized Youth	1/ 53021 pop.	6.1	1	-5.1	0	0	1	-5.1
Softball	Organized Adult	1/ 9417 pop.	34.6	17.5	-17.1	13	1	31.5	-3.1
	Organized Youth	1/ 53021 pop.	6.1	1	-5.1	0	0	1	-5.1
Rugby	Organized Adult	1/ 72413 pop.	4.5	0.5	-4.0	0	0	0.5	-4.0
	Organized Youth	1/ 339438 pop.	1.0	2	1.0	11	0	13	12.0
Swimming (Competition)									



17

RiversideCA.gov

Sport Assessed	These numbers are based on participation rates by the local		These numbers are existing facilities compared to populations of communities that are submitting data. These are not demand numbers but only an average of what people have not what they need.			
	Local Demand Calculation		NRPA Existing Facility Benchmark 1		NRPA Existing Facility Benchmark 2	
	Riverside Local Demand (1 per x population)	Demand	National Standard from 2018 NRPA Report: (1 per x population) data based on "all agencies column"	Demand	National Standard from 2018 NRPA Report: (1 per x population) data based on "more than 2,500" (riverside has a population density of 4,000 / square mile)	Demand
<b>Soccer</b>						
Large Regulation	23402	13.9	11383	28.6	15746	20.7
Small Regulation	17646	18.5	6039	54.0	8773	37.1
<b>Football</b>						
Large Regulation	66762	4.9	24742	13.2	35453	9.2
<b>Baseball</b>						
Large Regulation	28957	11.3	18880	17.3	25179	12.9
Small Regulation	17842	18.3	6519	50.0	7770	41.9
<b>Softball</b>						
Large Regulation	9417	34.6	12000	27.2	14725	22.1
Small Regulation	53021	6.1	9900	32.9	12121	26.9
<b>Rugby</b>						
Large Regulation	72413	4.5	24060	13.5	29924	10.9
<b>Swimming (Competition)</b>						
	1 pool		NRPA does not classify weather this is competitive or not, thus a per capita analysis should be used		NA	



18

RiversideCA.gov

Sport Assessed	These numbers are based on participation rates by the local		These numbers are existing facilities compared to populations of communities that are submitting data. These are not demand numbers but only an average of what people have not what they need.			
	Local Demand Calculation		NRPA Existing Facility Benchmark 1		NRPA Existing Facility Benchmark 2	
	Riverside Local Demand (1 per x population)	Demand	National Standard from 2018 NRPA Report (1 per x population) data based on "all agencies column"	Demand	National Standard from 2018 NRPA Report (1 per x population) data based on "more than 2,500" (Riverside has a population density of 4,000 / square mile)	Demand
Soccer						
Large Regulation	23402	13.9	11383	28.6	15746	20.7
Small Regulation	17646	18.5	6039	54.0	8773	37.1

1 Large Soccer Field (w/ lights) = \$300,000

Local Riverside Need                      14 Fields = \$4.2M

National Standard Equivalent           21 Fields = \$6.3M

**\$2.1 M** in expenses over demand



19

RiversideCA.gov

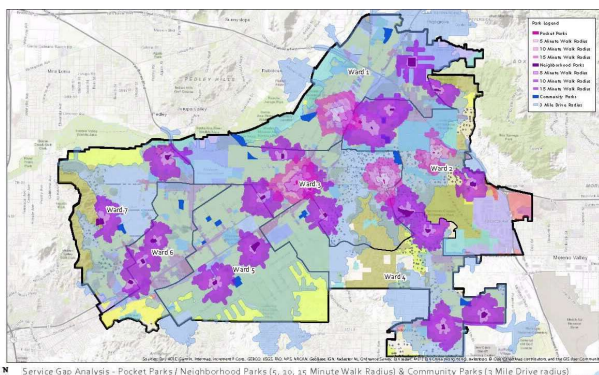
Needs Analysis Considering Demand from All Sports Organization Players Using Riverside Facilities										
Facility		Facility Need Ratio - City of Riverside		2018 Needs	Existing City Facilities	Surplus / Deficit (-)	School Facilities Available**	Other Facilities Available*	Total Facilities Available	Total Surplus/ Deficit(-)
Soccer	Organized Adult	1/ 23402	pop.	13.9	13.5	-0.4	6.5	10	30	16.1
	Organized Youth	1/ 17646	pop.	18.5	2.5	-16.0	20.5	12	35	16.5
Football	Organized Adult	1/ 66762	pop.	4.9	4	-0.9	4.5	0	8.5	3.6
Baseball	Organized Adult	1/ 28957	pop.	11.3	8.5	-2.8	7	0	15.5	4.2
	Organized Youth	1/ 17842	pop.	18.3	18	-0.3	0.15	1	19.15	0.9
Softball	Organized Adult	1/ 9417	pop.	34.6	17.5	-17.1	6.5	1	25	-9.6
	Organized Youth	1/ 53021	pop.	6.1	1	-5.1	0	0	1	-5.1
Rugby		1/ 72413	pop.	4.5	0.5	-4.0	0	0	0.5	-4.0
Swimming (Competition)		1/ 339438	pop.	1.0	2	1.0	5.5	0	7.5	6.5



20

RiversideCA.gov

## NEEDS ANALYSIS: SERVICE ANALYSIS



- 5 minute walk – 15,924 (5.0%) population
- 10 minute walk – 39,318 (12.0%) population
- 15 minute walk – 66,621 (20.0%) population
- Residents adjacent to Community Parks (measured in a 3 mile radius due to the automobile-centric design and programming) is an estimated 320,746 (98%)
- 8.36 ac. / 1000 population (developed and undeveloped)



21

**RiversideCA.gov**

## NEEDS ANALYSIS

## WHAT ARE THE TOP PRIORITY FACILITY NEEDS FOR RIVERSIDE?

FACILITIES					
Aquatic Center, Indoor Pool, Pool / Aquatic Facility (West of Arlington)	Swimming Pool	•	•	•	•
Baseball Fields, Baseball Diamonds, Baseball First 9s at Bonaville	Baseball Field (first 9s at hunter hobby)	•	•	•	•
BMX / Skate Park		•	•	•	•
Canoe / or Ferris Wheel (Fairmount Park)		•	•	•	•
Community Center (at all parks)		•	•	•	•
Community Garden (Patterson Park)		•	•	•	•
Cross Country Facility		•	•	•	•
Cup Park		•	•	•	•
Darticle Course		•	•	•	•
Football Field, Flag Football Tournament Location, Football Stadium		•	•	•	•
Golf Course (18 hole)		•	•	•	•
Handball Courts (at all parks)		•	•	•	•
Hockey Pond, Ramp / Skate to enter pool		•	•	•	•
Homesite Facility / Center		•	•	•	•
Jacuzzi		•	•	•	•
Library (Bobby Bonds Park)		•	•	•	•
Lifting in Parks		•	•	•	•
Multi-Purpose Fields		•	•	•	•
Open Space / Natural Areas / Greenbelts		•	•	•	•
Outdoor Performance Venue / Amphitheater / Arena		•	•	•	•
Parking		•	•	•	•
Park/Mt. Subdocus		•	•	•	•
Picnicall Courts w/light		•	•	•	•
Pocket Parks / Linear Parks		•	•	•	•
Recreation		•	•	•	•
Rough Field		•	•	•	•
River Ana River Trail		•	•	•	•
Scoreboards for all fields, Sport Field Fencing		•	•	•	•
Senior Facility / Center		•	•	•	•
South Meadows		•	•	•	•
Soccer Fields, Youth Soccer Fields (U-5, U-7)		•	•	•	•
Softball Fields		•	•	•	•
Swim Pool / Water Play		•	•	•	•
Tennis Courts (at all parks)		•	•	•	•
Trainer Ribs Sports Fields		•	•	•	•
Trail, Trail System / Trail Head/Access / Working / Logging		•	•	•	•
Youth Opportunity Center		•	•	•	•

One on One / Small Group
Stakeholder Interviews
Focus Group 1 - Neighborhood Parks & Advisory Groups
Focus Group 2 - Seniors
Focus Group 3 - Business, Foundations & Gov. Agencies
Focus Group 4 - Healthy Lifestyle
Focus Group 5 - Special Interest Groups

Public Community Consensus Building	
WORKSHOP 1	
WORKSHOP 2	
WORKSHOP 3	
WORKSHOP 4	
WORKSHOP 5	
WORKSHOP 6	
WORKSHOP 7	

Direct Survey	
SPORTS ORG	
ONLINE SURVEY	
TELEPHONE SURVEY	



22

**RiversideCA.gov**

## RECOMMENDATIONS



Parks Maintenance  
Recommendations



Park Facility Recommendations



Program Recommendations



General Plan Policy  
Recommendations



23

[RiversideCA.gov](http://RiversideCA.gov)

## RECOMMENDATIONS : MAINTENANCE

Soil Testing and  
Management

Lifecycle Facility  
Assessment

Park Irrigation

Parking and  
Roadway Areas

Sidewalk and  
Walkways

Playgrounds

Park Signage

Park Fencing

Park Trees and  
Landscaping

Sustainability  
Lighting

Synthetic Fields

Establish Park  
Maintenance  
Performance  
Standards

Hard Court /  
Surface Outdoor  
Facilities

Future Park and  
Recreation Costs



24

[RiversideCA.gov](http://RiversideCA.gov)



## RECOMMENDATIONS



- General Plan Policy Recommendations
  - General Plan—Parks and Recreation Element
  - General Plan—Land Use and Urban Design Element
  - General Plan—Public Facilities and Infrastructure Element
  - General Plan—Open Space and Conservation Element



27

RiversideCA.gov

## FUNDING AND IMPLEMENTATION



Funding Sources for Parks and Recreation



Current and Projected Capital Project Costs



28

RiversideCA.gov

## FUNDING SOURCES FOR PARKS AND RECREATION



29

RiversideCA.gov

## CURRENT AND PROJECTED CAPITAL PROJECT COSTS



- **\$158,331,198** in park specific renovations to developed park land
  - **\$74,550,970** in existing facility improvements
  - **\$75,044,228** in anticipated ADA improvements
  - **\$8,736,000** in citywide projects



30

RiversideCA.gov

## RECOMMENDATION

That the Park and Recreation Commission receive an update on the Park Master Plan project and provide feedback as appropriate.



31

RiversideCA.gov