

COMPREHENSIVE MASTER PLAN

Parks, Recreation and Community Services Department

Community Services and Youth Committee
November 13, 2019

RiversideCA.gov

COMPREHENSIVE PARK, RECREATION & COMMUNITY SERVICES

- **Guide and implementation tool** for the **management and development** of parks and recreation facilities and programs.
- Identifies **local** community needs
- Updates the general plan policy elements
- Offers **recommendations** to support the **Local Riverside Community**

“Alleviate parkland shortage, provide parks in underserved areas, and strive to preserve natural resources and open space in a cost-effective manner to enhance the living environment for all residents.”

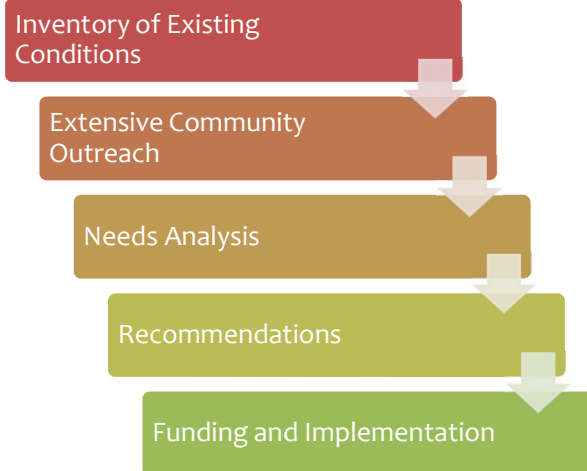
- General Plan



2

RiversideCA.gov

PROCESS



3

RiversideCA.gov

EXISTING CONDITIONS

- 59 parks
- 2519 acres of developed parkland
- 12 community centers
- 3 senior centers
- 8 swimming pools (1 joint use)
- 23.7 miles of trails
- 94.5 miles of bike lanes



4

RiversideCA.gov

COMMUNITY OUTREACH

- Stakeholder Interviews
- Focus Groups
- Community Workshop
- Sports Organization Questionnaire
- ESRI Online Survey
- Telephone Survey



5

RiversideCA.gov

COMMUNITY OUTREACH STAKEHOLDER INTERVIEWS

- 18 executive interviews
- adequate resources / infrastructure/ funding/ and addressing the rising deferred maintenance condition within the parks.
- Concerns about homelessness, outreach to disadvantages communities, and lack of facilities
- homelessness and afterschool programs are underserved the most; additionally, there is a need for more music, arts, and cultural based programming
- pool/ aquatic facility west of Arlington. Other mentions included sports facilities, trails, and a senior facility at Orange Crest.



6

RiversideCA.gov

COMMUNITY OUTREACH FOCUS GROUPS

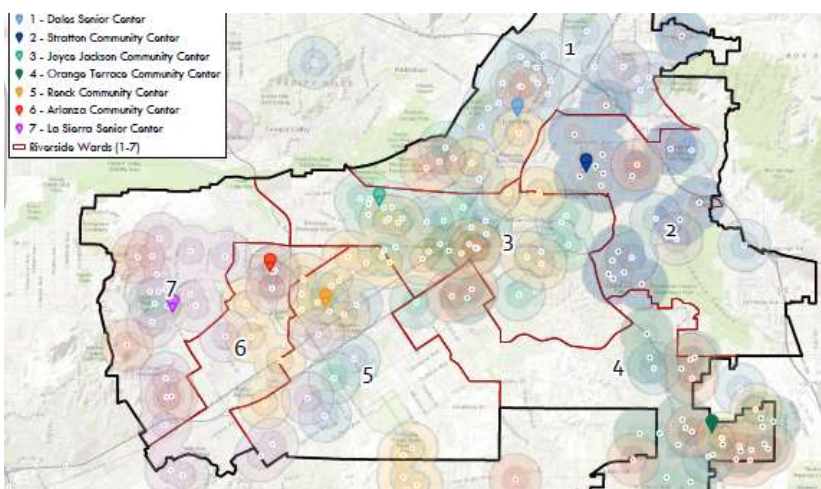
- 5 Focus Groups
- Facility Mentions: More shade structures, Improved trail facilities, Additional sports facilities /parking, Additional Community Centers, Homeless shelters
- Program Mentions: Sports training programs, Nature / outdoor educational programs, Transportation programs, Community outreach programs



7

RiversideCA.gov

COMMUNITY OUTREACH WORKSHOPS



- 7 Community Workshop (one in each ward)
- Issues: Homelessness, Safety / Crime, Traffic and Parking
- Facilities: Pools / Heated Pool Facilities, Restrooms, Trails, Shade, Modernizing Facilities
- Programs: Patrolling / Security / Ranger Program, Pool Activities, Nutritional Programs, Programs offered Online



8

RiversideCA.gov

COMMUNITY OUTREACH SPORTS ORGS.



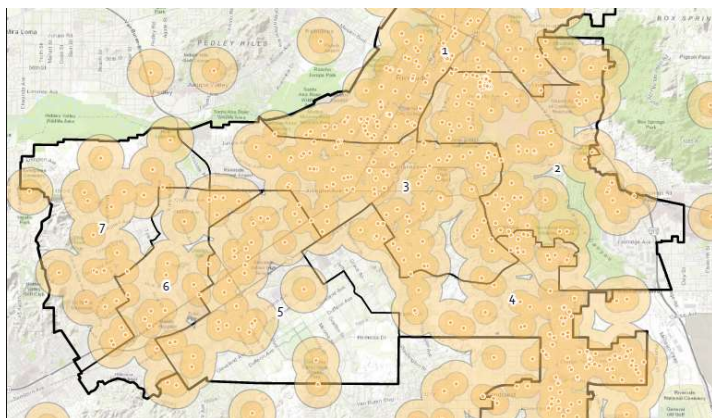
- 48 Sports Organization Reviewed and Analyzed
 - Percentage of resident players
 - Size of teams
 - Number of players
 - Seasonality
 - Field Turnovers



9

RiversideCA.gov

COMMUNITY OUTREACH ONLINE SURVEY



- 633 responses (571 identifying themselves as residents)
- Geolocated / Citywide distribution
- Questions on program and facility usage, satisfaction, and desires.



10

RiversideCA.gov

COMMUNITY OUTREACH TELEPHONE SURVEY

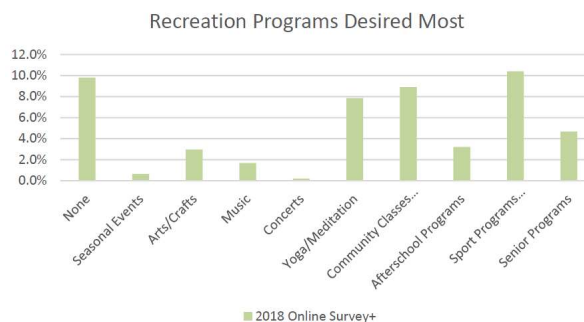
- 300 completed surveys representing over 900 residents
- Conducted in English and Spanish
- 2002 and 2018 data collected and reviewed



11

RiversideCA.gov

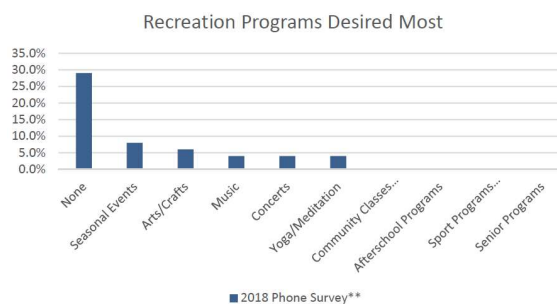
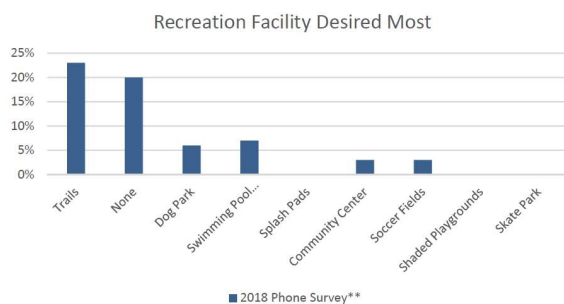
COMMUNITY OUTREACH ONLINE SURVEY



12

RiversideCA.gov

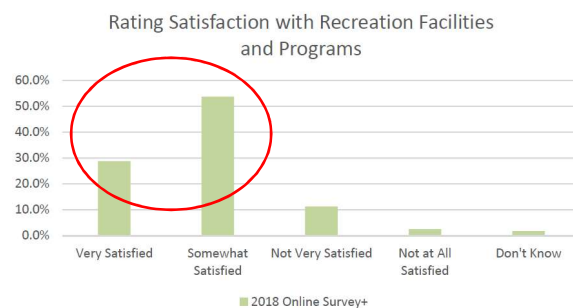
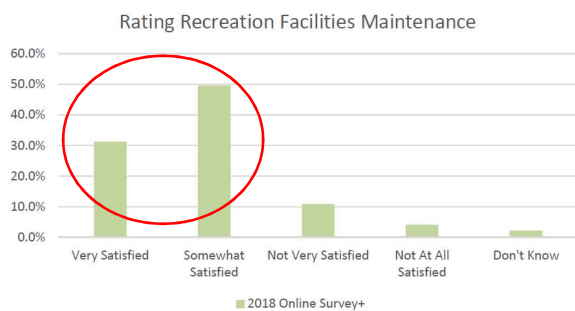
COMMUNITY OUTREACH TELEPHONE SURVEY



13

RiversideCA.gov

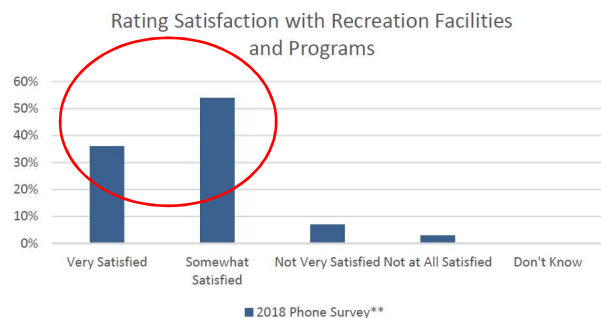
COMMUNITY OUTREACH ONLINE SURVEY



14

RiversideCA.gov

COMMUNITY OUTREACH TELEPHONE SURVEY



15

RiversideCA.gov

NEEDS ANALYSIS



How many Organized Sports Fields are Needed?



Are Neighborhood Parks Conveniently and Appropriately Distributed throughout the City?



What are the top priority facility needs for Riverside?

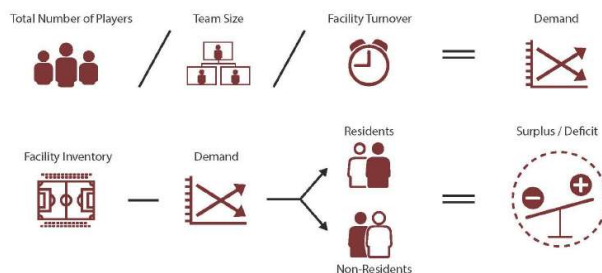


16

RiversideCA.gov

NEEDS ANALYSIS

HOW MANY ORGANIZED SPORTS FIELDS ARE NEEDED?



Needs Analysis Considering Demand from All Sports Organization Players Using Riverside Facilities

Facility	Facility Need Ratio - City of Riverside	2018 Needs	Existing City Facilities	Surplus / Deficit (-)	School Facilities Available	Other Facilities Available*	Total Facilities Available	Total Surplus/Deficit(-)
Soccer	Organized Adult 1/ 23402 pop.	13.9	13.5	-0.4	13	10	36.5	22.6
	Organized Youth 1/ 17646 pop.	18.5	2.5	-16.0	41	12	55.5	37.0
Football	Organized Adult 1/ 66762 pop.	4.9	4	-0.9	9	0	13	8.1
	Organized Youth 1/ 17842 pop.	18.3	18	-0.3	3	1	22.5	11.2
Baseball	Organized Adult 1/ 28957 pop.	11.3	8.5	-2.8	14	0	22.5	11.2
	Organized Youth 1/ 53021 pop.	6.1	1	-5.1	0	0	1	-5.1
Softball	Organized Adult 1/ 9417 pop.	34.6	17.5	-17.1	13	1	31.5	-3.1
	Organized Youth 1/ 53021 pop.	6.1	1	-5.1	0	0	1	-5.1
Rugby	Organized Adult 1/ 72413 pop.	4.5	0.5	-4.0	0	0	0.5	-4.0
	Organized Youth 1/ 339438 pop.	1.0	2	1.0	11	0	13	12.0
Swimming (Competition)								



17

RiversideCA.gov

Sport Assessed	These numbers are based on participation rates by the local		These numbers are existing facilities compared to populations of communities that are submitting data. These are not demand numbers but only an average of what people have not what they need.			
	Local Demand Calculation		NRPA Existing Facility Benchmark 1		NRPA Existing Facility Benchmark 2	
	Riverside Local Demand (1 per x population)	Demand	National Standard from 2018 NRPA Report: (1 per x population) data based on "all agencies column"	Demand	National Standard from 2018 NRPA Report: (1 per x population) data based on "more than 2,500" (riverside has a population density of 4,000 / square mile)	Demand
Soccer	23402	13.9	11383	28.6	15746	20.7
	17646	18.5	6039	54.0	8773	37.1
Football	66762	4.9	24742	13.2	35453	9.2
Baseball	28957	11.3	18880	17.3	25179	12.9
	17842	18.3	6519	50.0	7770	41.9
Softball	9417	34.6	12000	27.2	14725	22.1
	53021	6.1	9900	32.9	12121	26.9
Rugby			NRPA Lacrosse metric used as there is no Rugby metric. Field sizes are similar.			
Rugby	72413	4.5	24060	13.5	29924	10.9
Swimming (Competition)	1 pool		NRPA does not classify weather this is competitive or not, thus a per capita analysis should be used			



18

RiversideCA.gov

Sport Assessed	These numbers are based on participation rates by the local		These numbers are existing facilities compared to populations of communities that are submitting data. These are not demand numbers but only an average of what people have not what they need.			
	Local Demand Calculation		NRPA Existing Facility Benchmark 1		NRPA Existing Facility Benchmark 2	
	Riverside Local Demand (1 per x population)	Demand	National Standard from 2018 NRPA Report (1 per x population) data based on "all agencies column"	Demand	National Standard from 2018 NRPA Report (1 per x population) data based on "more than 2,500" (Riverside has a population density of 4,000 / square mile)	Demand
Soccer						
Large Regulation	23402	13.9	11383	28.6	15746	20.7
Small Regulation	17646	18.5	6039	54.0	8773	37.1

1 Large Soccer Field (w/ lights) = \$300,000

Local Riverside Need 14 Fields = \$4.2M

National Standard Equivalent 21 Fields = \$6.3M

\$2.1 M in expenses over demand



19

RiversideCA.gov

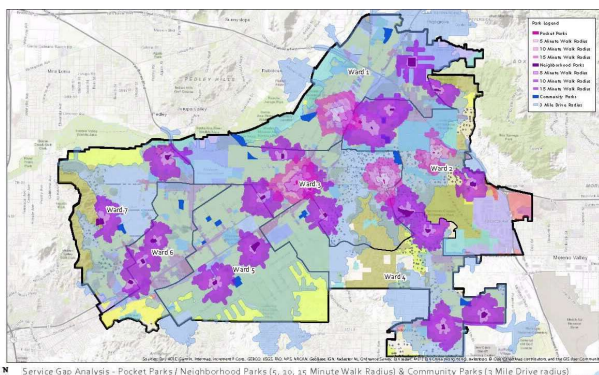
Needs Analysis Considering Demand from All Sports Organization Players Using Riverside Facilities										
Facility		Facility Need Ratio - City of Riverside		2018 Needs	Existing City Facilities	Surplus / Deficit (-)	School Facilities Available**	Other Facilities Available*	Total Facilities Available	Total Surplus/ Deficit(-)
Soccer	Organized Adult	1/ 23402	pop.	13.9	13.5	-0.4	6.5	10	30	16.1
	Organized Youth	1/ 17646	pop.	18.5	2.5	-16.0	20.5	12	35	16.5
Football										
	Organized Adult	1/ 66762	pop.	4.9	4	-0.9	4.5	0	8.5	3.6
Baseball										
	Organized Adult	1/ 28957	pop.	11.3	8.5	-2.8	7	0	15.5	4.2
	Organized Youth	1/ 17842	pop.	18.3	18	-0.3	0.15	1	19.15	0.9
Softball										
	Organized Adult	1/ 9417	pop.	34.6	17.5	-17.1	6.5	1	25	-9.6
	Organized Youth	1/ 53021	pop.	6.1	1	-5.1	0	0	1	-5.1
Rugby										
		1/ 72413	pop.	4.5	0.5	-4.0	0	0	0.5	-4.0
Swimming (Competition)										
		1/ 339438	pop.	1.0	2	1.0	5.5	0	7.5	6.5



20

RiversideCA.gov

NEEDS ANALYSIS: SERVICE ANALYSIS



- 5 minute walk – 15,924 (5.0%) population
- 10 minute walk – 39,318 (12.0%) population
- 15 minute walk – 66,621 (20.0%) population
- Residents adjacent to Community Parks (measured in a 3 mile radius due to the automobile-centric design and programming) is an estimated 320,746 (98%)
- 8.36 ac. / 1000 population (developed and undeveloped)



21

RiversideCA.gov

NEEDS ANALYSIS

WHAT ARE THE TOP PRIORITY FACILITY NEEDS FOR RIVERSIDE?

FACILITIES					
Aquatic Center, Indoor Pool, Pool / Aquatic Facility (West of Arlington): Swimming Pool		*	*	*	*
Baseball Fields, Baseball Diamonds, Baseball Field #1 at Bowerman, Baseball Field (third field at Hunter Hobbs)					
BMX / Skate Park				*	*
Carnival / Ferris Wheel (Fairmont Park)					
Community Center (at all parks)				*	*
Community Garden (Fatterson Park)				*	*
Class Country Facility		*	*	*	*
Club Park		*	*	*	*
Exercise Course					
Football Fields, Flag Football Tournament Location: Football Stadium					
Golf Course (18 hole)					
Open / Recreation Center, Basketball Courts (Arena / Pavilion)		*	*	*	*
Heated Pool, Ramip / Spans to enter pools					
Horticulture Facility / Center					
Jacuzzi		*	*	*	*
Library (Bobby Bonds Park)					
Lighting in Park					
Multi-Purpose Fields		*	*	*	*
Open Space / Natural Areas / Greenbelts		*	*	*	*
Outdoor Performance Venue / Amphitheater / Arena					
Parking		*	*	*	*
Pavilion, Ballroom					
Pickleball Courts w/Lights		*	*	*	*
Pocket Parks / Linear Parks		*	*	*	*
Restrooms					
Swampy Field		*	*	*	*
Senior Area Hike Trail		*	*	*	*
Scoreboards for all Fields, Sport Field Fencing					
Senior Facility / Center					
Swim Lessons					
Soccer Fields, Youth Soccer Fields (U-5, U-7)		*	*	*	*
Softball Fields					
Splash Pad / Water Play					
Swimming Pool, 1/2 mile, 1/4 mile, 1/8 mile, 1/16 mile, 1/32 mile, 1/64 mile, 1/128 mile, 1/256 mile, 1/512 mile, 1/1024 mile, 1/2048 mile, 1/4096 mile, 1/8192 mile, 1/16384 mile, 1/32768 mile, 1/65536 mile, 1/131072 mile, 1/262144 mile, 1/524288 mile, 1/1048576 mile, 1/2097152 mile, 1/4194304 mile, 1/8388608 mile, 1/16777216 mile, 1/33554432 mile, 1/67108864 mile, 1/134217728 mile, 1/268435456 mile, 1/536870912 mile, 1/1073741824 mile, 1/2147483648 mile, 1/4294967296 mile, 1/8589934592 mile, 1/17179869184 mile, 1/34359738368 mile, 1/68719476736 mile, 1/137438953472 mile, 1/274877906944 mile, 1/549755813888 mile, 1/1099511627776 mile, 1/2199023255552 mile, 1/4398046511104 mile, 1/8796093022208 mile, 1/17592186044416 mile, 1/35184372088832 mile, 1/70368744177664 mile, 1/140737488355328 mile, 1/281474976710656 mile, 1/562949953421312 mile, 1/1125899906842624 mile, 1/2251799813685248 mile, 1/4503599627370496 mile, 1/9007199254740992 mile, 1/18014398509481984 mile, 1/36028797018963968 mile, 1/72057594037927936 mile, 1/144115188075855872 mile, 1/288230376151711744 mile, 1/576460752303423488 mile, 1/1152921504606846976 mile, 1/2305843009213693952 mile, 1/4611686018427387904 mile, 1/9223372036854775808 mile, 1/18446744073709551616 mile, 1/36893488147419103232 mile, 1/73786976294838206464 mile, 1/147573952589676412928 mile, 1/295147905179352825856 mile, 1/590295810358705651712 mile, 1/1180591620717411303424 mile, 1/2361183241434822606848 mile, 1/4722366482869645213696 mile, 1/9444732965739290427392 mile, 1/18889465931478580854784 mile, 1/37778931862957161709568 mile, 1/75557863725914323419136 mile, 1/151115727451828646838272 mile, 1/302231454903657293676544 mile, 1/604462909807314587353088 mile, 1/1208925819614629174706176 mile, 1/2417851639229258349412352 mile, 1/4835703278458516698824704 mile, 1/9671406556917033397649408 mile, 1/19342813113834066795298816 mile, 1/38685626227668133590597632 mile, 1/77371252455336267181195264 mile, 1/154742504910672534362390528 mile, 1/309485009821345068724781056 mile, 1/618970019642690137449562112 mile, 1/1237940039285380274899124224 mile, 1/2475880078570760549798248448 mile, 1/4951760157141521099596496896 mile, 1/9903520314283042199192993792 mile, 1/19807040628566084398385987584 mile, 1/39614081257132168796771975168 mile, 1/79228162514264337593543950336 mile, 1/158456325028528675187087900672 mile, 1/316912650057057350374175801344 mile, 1/633825300114114700748351602688 mile, 1/1267650600228229401496703205376 mile, 1/2535301200456458802993406410752 mile, 1/5070602400912917605986812821504 mile, 1/10141204801825835211973625643008 mile, 1/20282409603651670423947251286016 mile, 1/40564819207303340847894502572032 mile, 1/81129638414606681695789005144064 mile, 1/162259276829213363391578010288128 mile, 1/324518553658426726783156020576256 mile, 1/649037107316853453566312041152512 mile, 1/1298074214633706907132624082305024 mile, 1/2596148429267413814265248164610048 mile, 1/5192296858534827628530496329220096 mile, 1/1038459371706965525706099265844					

	One on One / Small Group
Stakeholder Interviews	
Focus Group 1 - Neighborhood Parks & Advisory Groups	
Focus Group 2 - Seniors	
Focus Group 3 - Business, Foundations & Gov. Agencies	
Focus Group 4 - Healthy Lifestyle	
Focus Group 5 - Special Interest Groups	

Public Community Consensus Building						
WORKSHOP 1						
WORKSHOP 2						
WORKSHOP 3						
WORKSHOP 4						
WORKSHOP 5						
WORKSHOP 6						
WORKSHOP 7						

Direct Survey		
SPORTS ORG		
ONLINE SURVEY		
TELEPHONE SURVEY		



22

RiversideCA.gov

RECOMMENDATIONS



Parks Maintenance
Recommendations



Park Facility Recommendations



Program Recommendations



General Plan Policy
Recommendations



23

RiversideCA.gov

RECOMMENDATIONS : MAINTENANCE

Soil Testing and
Management

Lifecycle Facility
Assessment

Park Irrigation

Parking and
Roadway Areas

Sidewalk and
Walkways

Playgrounds

Park Signage

Park Fencing

Park Trees and
Landscaping

Sustainability
Lighting

Synthetic Fields

Establish Park
Maintenance
Performance
Standards

Hard Court /
Surface Outdoor
Facilities

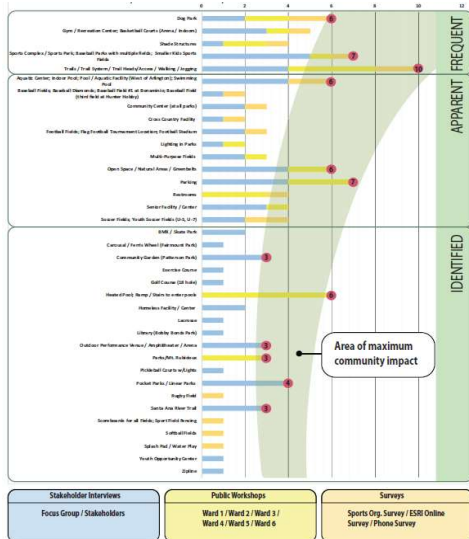
Future Park and
Recreation Costs



24

RiversideCA.gov

RECOMMENDATIONS : FACILITY



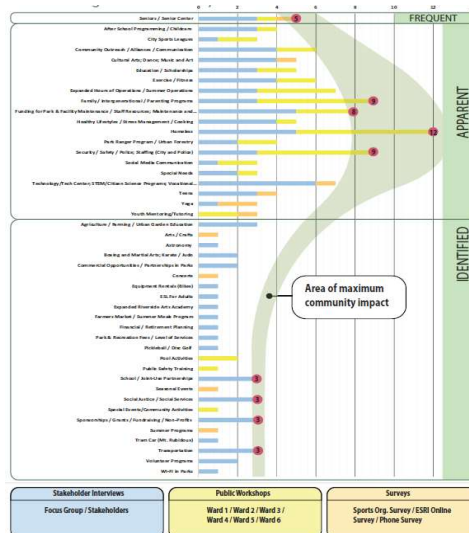
- Amphitheater
- Dog Park
- Community Garden
- Gym / Recreation Center
- Heated Pool
- Mt. Rubidoux
- New Aquatic Facility / Pool (West of Arlington)
- Open Space
- Parking
- Pocket Parks / Linear Parks
- Santa Ana River Trail
- Shade Structures
- Sports Complex
- Trails



25

RiversideCA.gov

RECOMMENDATIONS : PROGRAM



- Family / Intergenerational / Parenting Programs
- Funding for Parks and Facility Maintenance
- Homeless
- Schools / Grants / Fundraising / Non-Profits
- Seniors / Senior Center
- Security / Safety / Police
- Social Justice / Social Services
- Sponsorships / Grants / Fundraising
- Transportation



26

RiversideCA.gov

RECOMMENDATIONS



- General Plan Policy Recommendations
 - General Plan—Parks and Recreation Element
 - General Plan—Land Use and Urban Design Element
 - General Plan—Public Facilities and Infrastructure Element
 - General Plan—Open Space and Conservation Element



27

RiversideCA.gov

FUNDING AND IMPLEMENTATION



Funding Sources for Parks and Recreation



Current and Projected Capital Project Costs



28

RiversideCA.gov

FUNDING SOURCES FOR PARKS AND RECREATION



29

RiversideCA.gov

CURRENT AND PROJECTED CAPITAL PROJECT COSTS



- **\$158,331,198** in park specific renovations to developed parkland
 - **\$74,550,970** in existing facility improvements
 - **\$75,044,228** in anticipated ADA improvements
 - **\$8,736,000** in citywide projects



30

RiversideCA.gov

RECOMMENDATION

That the Community Services and Youth Committee receive an update on the Park Master Plan project and provide feedback as appropriate.



31

RiversideCA.gov