



Comprehensive Master Plan

Parks, Recreation and Community Services
Department

Planning Commission
Agenda Item: 7
November 14, 2019

RiversideCA.gov

COMPREHENSIVE PARK, RECREATION & COMMUNITY SERVICES

- **Guide and implementation tool** for the **management** and **development** of parks and recreation facilities and programs.
- Identifies **local** community needs
- Updates the general plan policy elements
- Offers **recommendations** to support the **Local Riverside Community**

“Alleviate parkland shortage, provide parks in underserved areas, and strive to preserve natural resources and open space in a cost-effective manner to enhance the living environment for all residents.”

- General Plan



2

RiversideCA.gov

PROCESS



3

RiversideCA.gov

EXISTING CONDITIONS

- 59 parks
- 2519 acres of developed parkland
- 12 community centers
- 3 senior centers
- 8 swimming pools (1 joint use)
- 23.7 miles of trails
- 94.5 miles of bike lanes



4

RiversideCA.gov

COMMUNITY OUTREACH

- Stakeholder Interviews
- Focus Groups
- Community Workshop
- Sports Organization Questionnaire
- ESRI Online Survey
- Telephone Survey



5

RiversideCA.gov

COMMUNITY OUTREACH STAKEHOLDER INTERVIEWS

- 18 executive interviews
- adequate resources / infrastructure/ funding/ and addressing the rising deferred maintenance condition within the parks.
- Concerns about homelessness, outreach to disadvantages communities, and lack of facilities
- homelessness and afterschool programs are underserved the most; additionally, there is a need for more music, arts, and cultural based programming
- pool/ aquatic facility west of Arlington. Other mentions included sports facilities, trails, and a senior facility at Orange Crest.



6

RiversideCA.gov

COMMUNITY OUTREACH FOCUS GROUPS

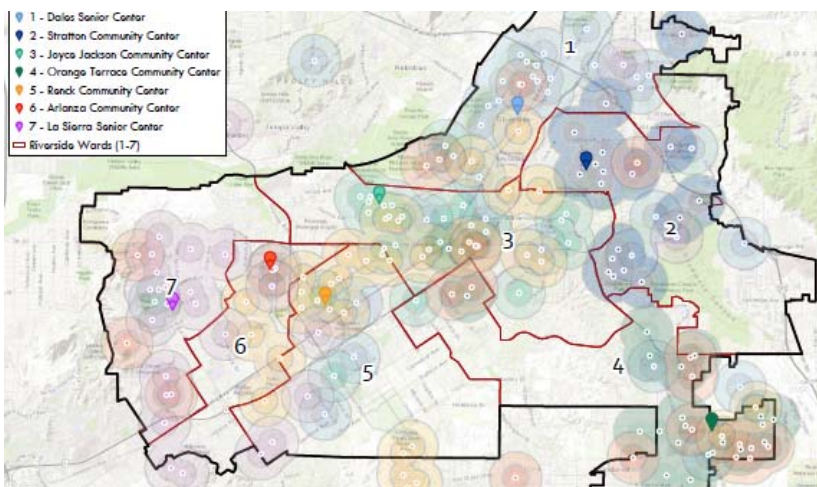
- 5 Focus Groups
- Facility Mentions: More shade structures, Improved trail facilities, Additional sports facilities /parking, Additional Community Centers, Homeless shelters
- Program Mentions: Sports training programs, Nature / outdoor educational programs, Transportation programs, Community outreach programs



7

RiversideCA.gov

COMMUNITY OUTREACH WORKSHOPS



- 7 Community Workshop (one in each ward)
- Issues: Homelessness, Safety / Crime, Traffic and Parking
- Facilities: Pools / Heated Pool Facilities, Restrooms, Trails, Shade, Modernizing Facilities
- Programs: Patrolling / Security / Ranger Program, Pool Activities, Nutritional Programs, Programs offered Online



8

RiversideCA.gov

COMMUNITY OUTREACH SPORTS ORGS.



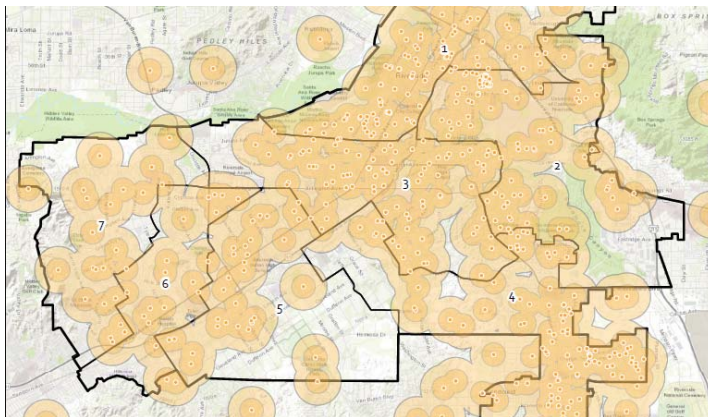
- 48 Sports Organization Reviewed and Analyzed
 - Percentage of resident players
 - Size of teams
 - Number of players
 - Seasonality
 - Field Turnovers



9

RiversideCA.gov

COMMUNITY OUTREACH ONLINE SURVEY



- 633 responses (571 identifying themselves as residents)
- Geolocated / Citywide distribution
- Questions on program and facility usage, satisfaction, and desires.



10

RiversideCA.gov

COMMUNITY OUTREACH TELEPHONE SURVEY

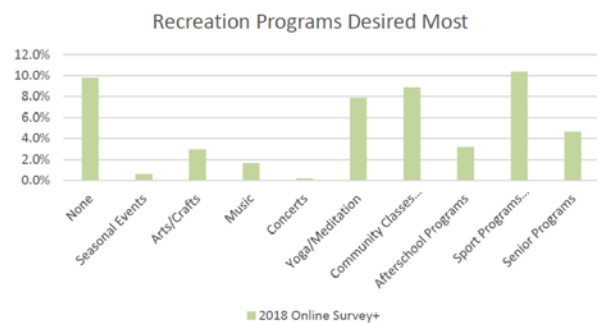
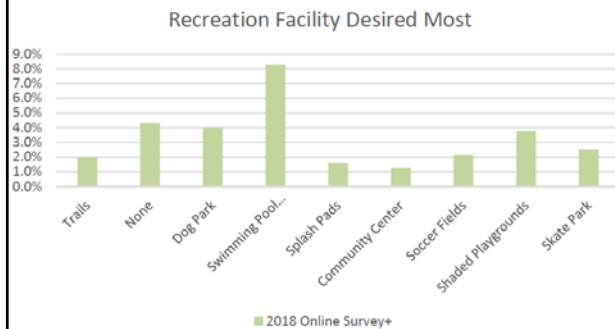
- 300 completed surveys representing over 900 residents
- Conducted in English and Spanish
- 2002 and 2018 data collected and reviewed



11

RiversideCA.gov

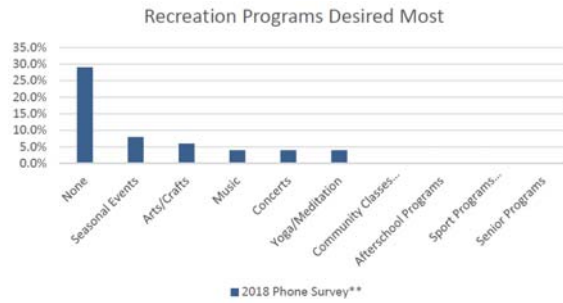
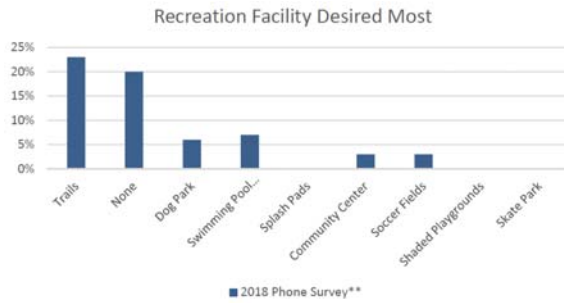
COMMUNITY OUTREACH ONLINE SURVEY



12

RiversideCA.gov

COMMUNITY OUTREACH TELEPHONE SURVEY



13

RiversideCA.gov

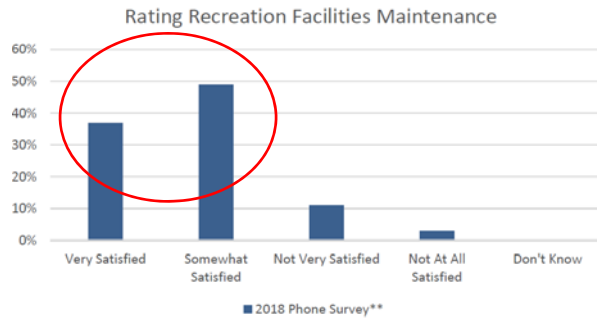
COMMUNITY OUTREACH ONLINE SURVEY



14

RiversideCA.gov

COMMUNITY OUTREACH TELEPHONE SURVEY



15

RiversideCA.gov

NEEDS ANALYSIS



How many Organized Sports Fields are Needed?



Are Neighborhood Parks Conveniently and Appropriately Distributed throughout the City?



What are the top priority facility needs for Riverside?



16

RiversideCA.gov

NEEDS ANALYSIS

HOW MANY ORGANIZED SPORTS FIELDS ARE NEEDED?



Needs Analysis Considering Demand from All Sports Organization Players Using Riverside Facilities

Facility Need Ratio - City of Riverside			2018 Needs	Existing City Facilities	Surplus / Deficit (-)	Facilities Available	Facilities Available*	Total Facilities Available	Total Surplus/Deficit(-)
Soccer	Organized Adult	1/ 23402 pop.	13.9	13.5	-0.4	13	10	36.5	22.6
	Organized Youth	1/ 17646 pop.	18.5	2.5	-16.0	41	12	55.5	37.0
Football	Organized Adult	1/ 66762 pop.	4.9	4	-0.9	9	0	13	8.1
	Organized Youth	1/ 17842 pop.	11.3	8.5	-2.8	14	0	22.5	11.2
Baseball	Organized Adult	1/ 53021 pop.	6.1	1	-5.1	0	0	1	-5.1
	Organized Youth	1/ 17842 pop.	18.3	18	-0.3	3	1	22	3.7
Softball	Organized Adult	1/ 9417 pop.	34.6	17.5	-17.1	13	1	31.5	-3.1
	Organized Youth	1/ 53021 pop.	6.1	1	-5.1	0	0	1	-5.1
Rugby	1/ 72413 pop.	4.5	0.5	-4.0	0	0	0.5	-4.0	
Swimming (Competition)	1/ 339438 pop.	1.0	2	1.0	11	0	13	12.0	



17

RiversideCA.gov

Sport Assessed	These numbers are based on participation rates by the local		These numbers are existing facilities compared to populations of communities that are submitting data. These are not demand numbers but only an average of what people have not what they need.	
	Local Demand Calculation		NRPA Existing Facility Benchmark 1	
	Riverside Local Demand (1 per x population)	Demand	National Standard from 2018 NRPA Report: (1 per x population) data based on "all agencies column"	National Standard from 2018 NRPA Report: (1 per x population) data based on "more than 2,500" (riverside has a population density of 4,000 / square mile)
Soccer	Large Regulation	23402 13.9	11383 28.6	15746 20.7
	Small Regulation	17646 18.5	6039 54.0	8773 37.1
Football	Large Regulation	66762 4.9	24742 13.2	35453 9.2
	Small Regulation			
Baseball	Large Regulation	28957 11.3	18880 17.3	25179 12.9
	Small Regulation	17842 18.3	6519 50.0	7770 41.9
Softball	Large Regulation	9417 34.6	12000 27.2	14725 22.1
	Small Regulation	53021 6.1	9900 32.9	12121 26.9
Rugby	Large Regulation	72413 4.5	24060 13.5	29924 10.9
	Small Regulation			
Swimming (Competition)	1 pool		NA	



18

RiversideCA.gov


Sport Assessed	These numbers are based on participation rates by the local		These numbers are existing facilities compared to populations of communities that are submitting data. These are not demand numbers but only an average of what people have not what they need.			
	Local Demand Calculation		NRPA Existing Facility Benchmark 1		NRPA Existing Facility Benchmark 2	
	Riverside Local Demand (1 per x population)	Demand	National Standard from 2018 NRPA Report (1 per x population) data based on "all agencies column"	Demand	National Standard from 2018 NRPA Report (1 per x population) data based on "more than 2,500" (riverside has a population density of 4,000 / square mile)	Demand
Soccer						
Large Regulation	23402	13.9	11383	28.6	15746	20.7
Small Regulation	17646	18.5	6039	54.0	8773	37.1

1 Large Soccer Field (w/ lights) = \$300,000


Local Riverside Need 14 Fields = \$4.2M

National Standard Equivalent 21 Fields = \$6.3M

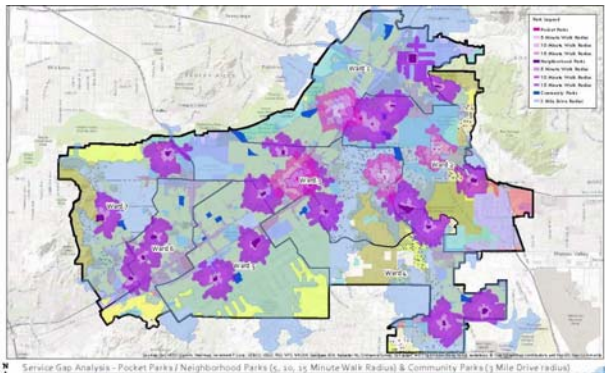
\$2.1 M in expenses over demand

 RiversideCA.gov

Needs Analysis Considering Demand from All Sports Organization Players Using Riverside Facilities										
		Facility Need Ratio - City of Riverside		2018 Needs	Existing City Facilities	Surplus / Deficit (-)	School Facilities Available**	Other Facilities Available*	Total Facilities Available	Total Surplus/ Deficit(-)
Soccer	Organized Adult	1/ 23402	pop.	13.9	13.5	-0.4	6.5	10	30	16.1
	Organized Youth	1/ 17646	pop.	18.5	2.5	-16.0	20.5	12	35	16.5
Football	Organized Adult	1/ 66762	pop.	4.9	4	-0.9	4.5	0	8.5	3.6
	Organized Youth									
Baseball	Organized Adult	1/ 28957	pop.	11.3	8.5	-2.8	7	0	15.5	4.2
	Organized Youth	1/ 17842	pop.	18.3	18	-0.3	0.15	1	19.15	0.9
Softball	Organized Adult	1/ 9417	pop.	34.6	17.5	-17.1	6.5	1	25	-9.6
	Organized Youth	1/ 53021	pop.	6.1	1	-5.1	0	0	1	-5.1
Rugby		1/ 72413	pop.	4.5	0.5	-4.0	0	0	0.5	-4.0
Swimming (Competition)		1/ 339438	pop.	1.0	2	1.0	5.5	0	7.5	6.5


RiversideCA.gov

NEEDS ANALYSIS: SERVICE ANALYSIS



- 5 minute walk – 15,924 (5.0%) population
- 10 minute walk – 39,318 (12.0%) population
- 15 minute walk – 66,621 (20.0%) population
- Residents adjacent to Community Parks (measured in a 3 mile radius due to the automobile-centric design and programming) is an estimated 320,746 (98%)
- 8.36 ac. / 1000 population (developed and undeveloped)



NEEDS ANALYSIS

WHAT ARE THE TOP PRIORITY FACILITY NEEDS FOR RIVERSIDE?

FACILITIES				
Aquatic Center, Indoor Pool, Pool / Aquatic Facility (West of Arlington)	•	•	•	•
Swimming Pool	•	•	•	•
Baseball Field, Baseball Field, Baseball Field #1 at Bonaminio, Baseball Field (third field at Hunter Hobby)	•	•	•	•
BMX / Skate Park	•	•	•	•
Canoe / Kayak / Paddle Boat / Canoe / Kayak	•	•	•	•
Community Center (all parks)	•	•	•	•
Community Garden (Patterson Park)	•	•	•	•
Cross Country Facility	•	•	•	•
Cricket Field	•	•	•	•
Exercise Course	•	•	•	•
Flag Football Field, Flag Football Field, Flag Football Field	•	•	•	•
Golf Course (18 hole)	•	•	•	•
Heated Pool, Ramp / Stairs to enter pools	•	•	•	•
Homeless Facility / Center	•	•	•	•
Lacrosse	•	•	•	•
Library (Bobby Bonds Park)	•	•	•	•
Lighting in Parks	•	•	•	•
Multi-Purpose Fields	•	•	•	•
Open Space / Natural Areas / Greenbelts	•	•	•	•
Outdoor Performance Venue / Amphitheater / Arena	•	•	•	•
Park/Mt. Rubidoux	•	•	•	•
Pickleball Courts w/Lights	•	•	•	•
Pocket Parks / Linear Parks	•	•	•	•
Recreation	•	•	•	•
Rugby Field	•	•	•	•
Santa Ana River Trail	•	•	•	•
Scoreboards for all Fields, Sport Field Fencing	•	•	•	•
Senior Facility / Center	•	•	•	•
Shade Structures	•	•	•	•
Soccer Fields, Youth Soccer Fields (U-5, U-7)	•	•	•	•
Tennis Fields	•	•	•	•
Splash Pad / Water Play	•	•	•	•
Sports Complex / Sports Park, Baseball Parks with multiple fields, smaller kids sports fields	•	•	•	•
Walking / Jogging / Biking / Roller Skating / Skateboarding / Skateboarding	•	•	•	•
Youth Opportunity Center	•	•	•	•
Ecotone	•	•	•	•

One on One / Small Group				
Stakeholder Interviews	Focus Group 1 - Neighborhood Parks & Advisory Groups	Focus Group 2 - Seniors	Focus Group 3 - Business, Foundations & Gov. Agencies	Focus Group 4 - Healthy Lifestyle
				Focus Group 5 - Special Interest Groups

Public Community Consensus Building						
WORKSHOP 1	WORKSHOP 2	WORKSHOP 3	WORKSHOP 4	WORKSHOP 5	WORKSHOP 6	WORKSHOP 7

Direct Survey		
SPORTS ORG	ONLINE SURVEY	TELEPHONE SURVEY



RECOMMENDATIONS



Parks Maintenance
Recommendations



Park Facility Recommendations



Program Recommendations



General Plan Policy
Recommendations



23

RiversideCA.gov

RECOMMENDATIONS : MAINTENANCE

Soil Testing and
Management

Lifecycle Facility
Assessment

Park Irrigation

Parking and
Roadway Areas

Sidewalk and
Walkways

Playgrounds

Park Signage

Park Fencing

Park Trees and
Landscaping

Sustainability
Lighting

Synthetic Fields

Establish Park
Maintenance
Performance
Standards

Hard Court /
Surface Outdoor
Facilities

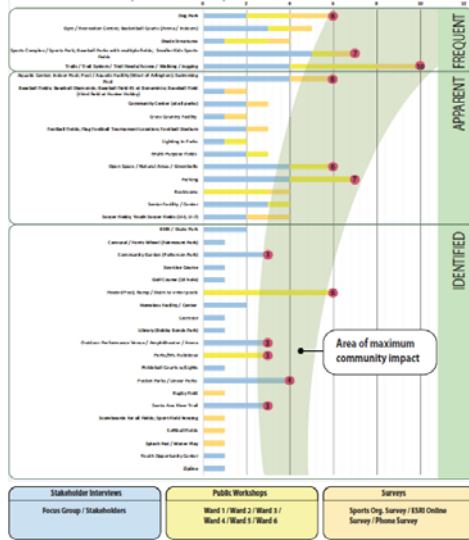
Future Park and
Recreation Costs



24

RiversideCA.gov

RECOMMENDATIONS : FACILITY



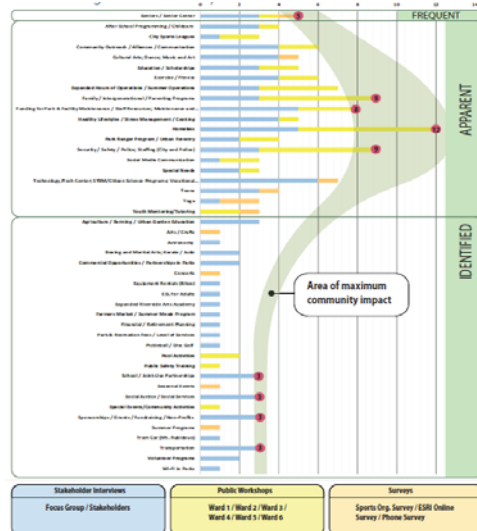
- Amphitheater
- Dog Park
- Community Garden
- Gym / Recreation Center
- Heated Pool
- Mt. Rubidoux
- New Aquatic Facility / Pool (West of Arlington)
- Open Space
- Parking
- Pocket Parks / Linear Parks
- Santa Ana River Trail
- Shade Structures
- Sports Complex
- Trails



25

RiversideCA.gov

RECOMMENDATIONS : PROGRAM



- Family / Intergenerational / Parenting Programs
- Funding for Parks and Facility Maintenance
- Homeless
- Schools / Grants / Fundraising / Non-Profits
- Seniors / Senior Center
- Security / Safety / Police
- Social Justice / Social Services
- Sponsorships / Grants / Fundraising
- Transportation



26

RiversideCA.gov

RECOMMENDATIONS



- General Plan Policy Recommendations
 - General Plan—Parks and Recreation Element
 - General Plan—Land Use and Urban Design Element
 - General Plan—Public Facilities and Infrastructure Element
 - General Plan—Open Space and Conservation Element



27

RiversideCA.gov

FUNDING AND IMPLEMENTATION



Funding Sources for Parks and
Recreation



Current and Projected Capital
Project Costs



28

RiversideCA.gov

FUNDING SOURCES FOR PARKS AND RECREATION



29

RiversideCA.gov

CURRENT AND PROJECTED CAPITAL PROJECT COSTS



- **\$158,331,198** in park specific renovations to developed parkland
 - **\$74,550,970** in existing facility improvements
 - **\$75,044,228** in anticipated ADA improvements
 - **\$8,736,000** in citywide projects



30

RiversideCA.gov

RECOMMENDATION

That the Park and Recreation Commission receive and update on the Park Master Plan project and provide feedback as appropriate.



31

RiversideCA.gov