

EASEMENTS

- ① 40' EASEMENT FOR STORM DRAIN AND WATERLINE FACILITIES DEDICATED PER PM 26301
- ② CENTERLINE SEWER EASEMENT GRANTED TO THE CITY OF RIVERSIDE PER BOOK 147, PAGE 81 OF DEEDS, RECORDED MARCH 26, 1982, NO WIDTH GIVEN, ALSO 20' SEWER EASEMENT DEDICATED PER PM 26301
- ③ EASEMENT FOR NATURAL GAS DISTRIBUTION FACILITIES, AND SANITARY SEWER FACILITIES RESERVED TO THE CITY OF RIVERSIDE PER DOC. NO. 308505, RECORDED AUG. 16, 1982
- ④ 40' WATERLINE FACILITY EASEMENT RESERVED TO THE CITY OF RIVERSIDE PER DOC. NO. 308505, RECORDED AUG. 16, 1982
- ⑤ 15' ELECTRICAL ENERGY TRANSMISSION AND DISTRIBUTION FACILITIES AND CABLE TV DISTRIBUTION FACILITIES EASEMENT RESERVED TO THE CITY OF RIVERSIDE PER DOC. NO. 308505, RECORDED AUG. 16, 1982
- ⑥ 10' ELECTRICAL EASEMENT DEDICATED PER PM 26301
- ⑦ 1' EASEMENT FOR PUBLIC UTILITIES, STORM DRAIN AND SEWER PER BOOK 1403, PAGE 398, O.R. RECORDED SEPT. 26, 1982

LEGEND

- △ INDICATES CONTROL POINT AS NOTED HEREON.
● INDICATES FOUND MONUMENT AS NOTED.

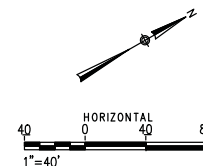
STATION	NORTHING	EASTING	ELEVATION	MONUMENT
PVC 223	2300307.75	6222081.36	879.64	FOUND SCRIBED "X" ON CONCRETE PLATFORM
PVC 224	2301209.43	6222601.57	877.66	FOUND REBAR & CAP, FLUSH
7	2300807.32	6222350.17	879.30	FOUND PK NAIL & WASHER
8	2301311.96	6222609.52	879.23	SET MAG. NAIL
432	2301864.39	6222679.14	874.86	FOUND LEAD & DISC STAMPED "L.S. 5491"
436	2301328.09	6222434.81	875.53	FOUND 1" IRON PIPE W/PLASTIC PLUG
439	2301134.28	6222470.04	876.49	FOUND 3/4" IRON PIPE, OPEN
453	2301062.42	6222101.21	870.89	FOUND 1" IRON PIPE W/PLASTIC PLUG
454	2301537.32	6222554.35	874.51	FOUND 1" IRON PIPE W/PLASTIC PLUG

BASIS OF BEARINGS

THE BASIS OF BEARINGS FOR THIS SURVEY IS THE CALIFORNIA COORDINATE SYSTEM OF 1983 (CCS83) NAD83, ZONE 6, 2007.00 EPOCH AS ESTABLISHED BY RAIL SURVEYORS AND ENGINEERS, INC. (R.S.E.) FOR THE R.C.T.C. PERRIS VALLEY LINE AT POINTS 131, 223 & 224. PER THE R.S.E. PROVIDED CONTROL RECOVERY SHEETS.

BASIS OF ELEVATIONS

ELEVATIONS FOR THIS SURVEY ARE BASED UPON N.A.V.D. 88 DATUM AS MEASURED FROM CONTROL STATION PVC223 ESTABLISHED BY R.S.E. AND HAS AN ELEVATION OF 879.64 FEET.



STIMES

\$USERS

STATE
SALLES
SPECIAL
SPECIAL

INFORMATION CONFIDENTIAL: All plans, drawings, specifications, and all information furnished hereunder shall remain the property of the Riverside County Transportation Commission and shall be held confidential and shall not be used for any purpose not provided for in agreement with the Riverside County Transportation Commission.		DESIGNED BY B. SCOTT EDKINS DRAWN BY B. SCOTT EDKINS CHECKED BY GARY L. HUS APPROVED BY GARY L. HUS DATE 01-24-2019		HDR Engineering, Inc. 2280 Market Street, Suite 100 Riverside, CA 92501-2110 (951) 320-7300		RIVERSIDE LAYOVER FACILITY SURVEY CONTROL	CONTRACT NO. 19-33-029-00 DRAWING NO. VA 001 REVISION SHEET NO. 9 OF 53 SCALE 1"=40'
REV.	DATE	BY	APP.				

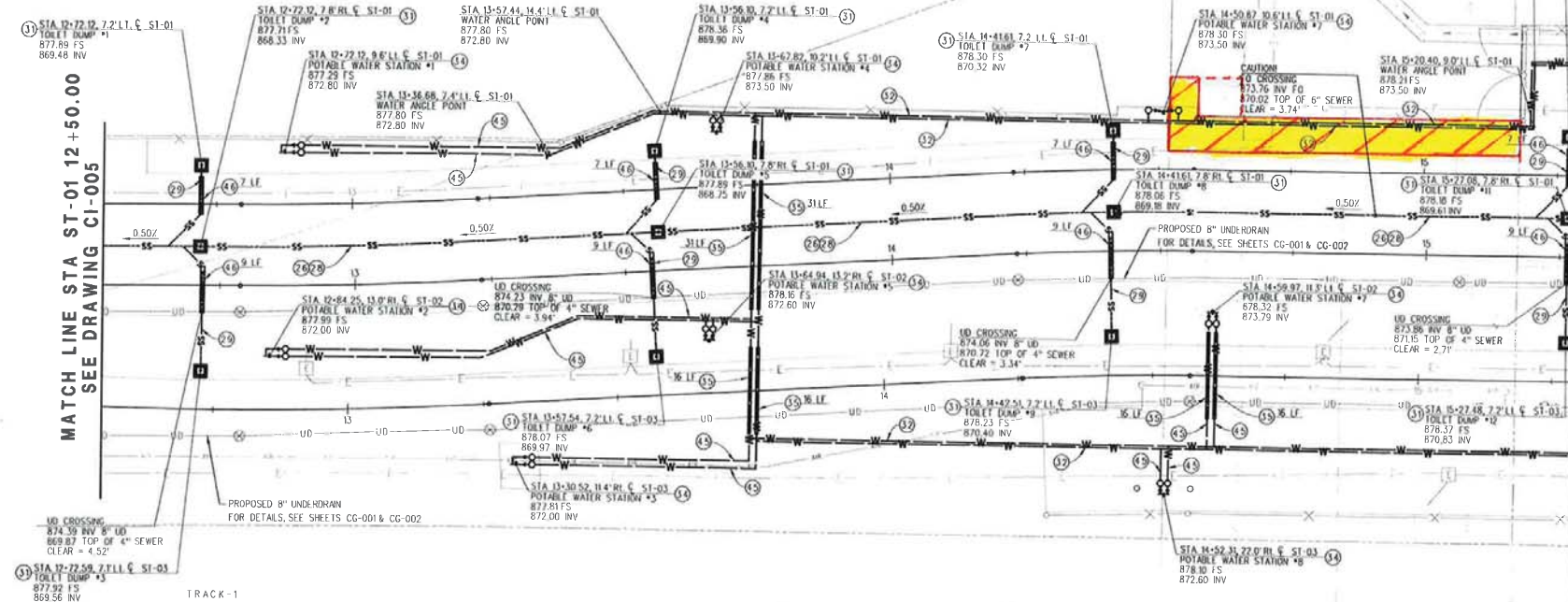
CONSTRUCTION NOTES (UTILITY):

- 26 TRENCHING, BEDDING AND BACKFILL PER CITY OF RIVERSIDE STD PLAN NO. 453, CASE 1
- 28 CONSTRUCT 6" SDR-35 PVC SEWER LINE PER PLAN
- 29 CONSTRUCT 4" SDR-35 PVC SEWER LATERAL WITH WVC CONNECTION
- 31 CONSTRUCT TOILET DUMP STATION PER SCORRA ENGINEERING STD 7101
- 32 CONSTRUCT 2" SCHEDULE 80 PVC DOMESTIC WATER SUPPLY

CONSTRUCTION NOTES CONTINUED (UTILITY):

- 33 CONSTRUCT POTABLE WATER STATION PER SCORRA ENGINEERING STD 7103
- 34 CONSTRUCT 6" x 1/4" STEEL SLEEVE, LENGTH PER PLAN
- 35 CONSTRUCT 1" SCHEDULE 80 PVC DOMESTIC WATER SUPPLY
- 36 CONSTRUCT 8" x 1/4" STEEL SLEEVE, LENGTH PER PLAN

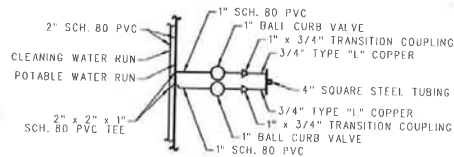
APN 215-153-010



MATCH LINE STA ST-01 12+50.00
SEE DRAWING CI-005

MATCH LINE STA ST-01 15+25.00
SEE DRAWING CI-007

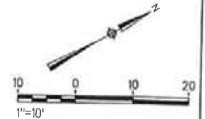
AT & SF RR
APN 215-143-004



DETAIL 8 - POTABLE WATER STATION DIAGRAM
NOT TO SCALE

GENERAL NOTES:

- UTILITIES SHOWN ARE BASED ON RECORD DRAWINGS, AS BUILT AND POTHOLES DONE DURING DESIGN. CONTRACTOR IS RESPONSIBLE FOR VERIFICATION OF ALL UTILITIES AND RR SIGNALS AND COMMUNICATION EQUIPMENT.
- UNKNOWN COMMUNICATION UTILITY IN CONFLICT, CONTRACTOR TO VERIFY EXTENT OF CONFLICT AND COORDINATE WITH OWNER FOR RELOCATION.
- UNKNOWN COMMUNICATION UTILITY IN PARTIAL CONFLICT, CONTRACTOR TO VERIFY AND COORDINATE WITH OWNER AS NEEDED FOR PROTECTION AND OR RELOCATION.
- THE CONTRACTOR SHALL CALL IN A LOCATION REQUEST TO UNDERGROUND SERVICE ALERT (USA) PHONE 1-800-227-2600, TWO WORKING DAYS BEFORE DIGGING. NO CONSTRUCTION PERMIT WILL BE ISSUED BY THE PUBLIC WORKS DEPARTMENT INVOLVING EXCAVATION FOR UNDERGROUND FACILITIES UNLESS THE APPLICANT HAS BEEN PROVIDED AN INQUIRY IDENTIFICATION NUMBER BY U.S.A.



Underground Service Alert



Call: TOLL FREE
1 800
422-4133

TWO WORKING DAYS BEFORE YOU DIG

REV	DATE	DESCRIPTION

APPROVED BY:	J. BROWN
DESIGNED BY:	W. STECK
CHECKED BY:	M. SHAVER
APPROVED BY:	C. CHRISTOPHIS
DATE:	12-15-2016



RIVERSIDE COUNTY
TRANSPORTATION
COMMISSION

RIVERSIDE LAYOVER FACILITY

WATER & SEWER PLAN
STA 12+50.00 TO STA 15+25.00

CONTRACT NO.	C1-006
DRAWING NO.	
REVISION / SHEET NO.	
SCALE	1"=10'