

RIVERSIDE PUBLIC UTILITIES

Board Memorandum

BOARD OF PUBLIC UTILITIES

DATE: February 10, 2020

GENERAL MANAGER'S REPORT

ITEM NO: 14

SUBJECT: MONTHLY WATER REPORT – December 2019

In December, RPU's total water production was 3,995 acre-feet (AF) as shown in Figures 1 and 2. RPU's annual rolling production totals by month are shown in Figure 3. In December, the peak water usage on the potable water distribution system was 45.6 million gallons per day (MGD) and occurred on December 18, 2019 as shown on Figure 4.

RPU's potable water supply, including deliveries to Western Municipal Water District (WMWD), totaled 3,730 AF, which decreased from last December by 512 AF. Under the Cooperative Agreement for Water Production and Conveyance with WMWD, 526 AF was wholesaled to WMWD during December as shown in Figures 1 and 2. During this 2019/20 fiscal year, a total of 3,642 AF of potable water has been delivered to WMWD.

In December, RPU's Gallons Per-Capita per Day (GPCD) was 126, and its Residential Gallons Per-Capita per Day (R-GPCD) was 73. RPU's annual rolling GPCD was 178, which is below the compliance target specified in SB X7-7 (i.e. 20% reduction by 2020) of 213. RPU's annual rolling R-GPCD was 105 as shown on Figure 5.

Weather conditions within the City of Riverside showed that December of 2019 was cooler by 2.1 degrees from December last year and experienced a decrease of 0.33 inches of rainfall compared to December 2018.

There were no significant events for the water system in December 2019.

Basin Groundwater Levels

Groundwater levels in the Bunker Hill, Rialto-Colton, and Riverside North basins are continuing to show a long-term declining trend, while groundwater levels in the Riverside South Basin remain relatively stable as shown in Figure 6. Water levels increased by 8 feet in the Bunker Hill Basin as compared to December of last year. Water levels increased by 3 feet in the Rialto-Colton Basin as compared to December of last year. Water levels increased by 4 feet in the Riverside North Basin and increased by 2 feet in the Riverside South Basin as compared to December of last year.

FIGURE 1: RPU WATER - TOTAL PRODUCTION REPORT- FISCAL YEAR 2019 -2020

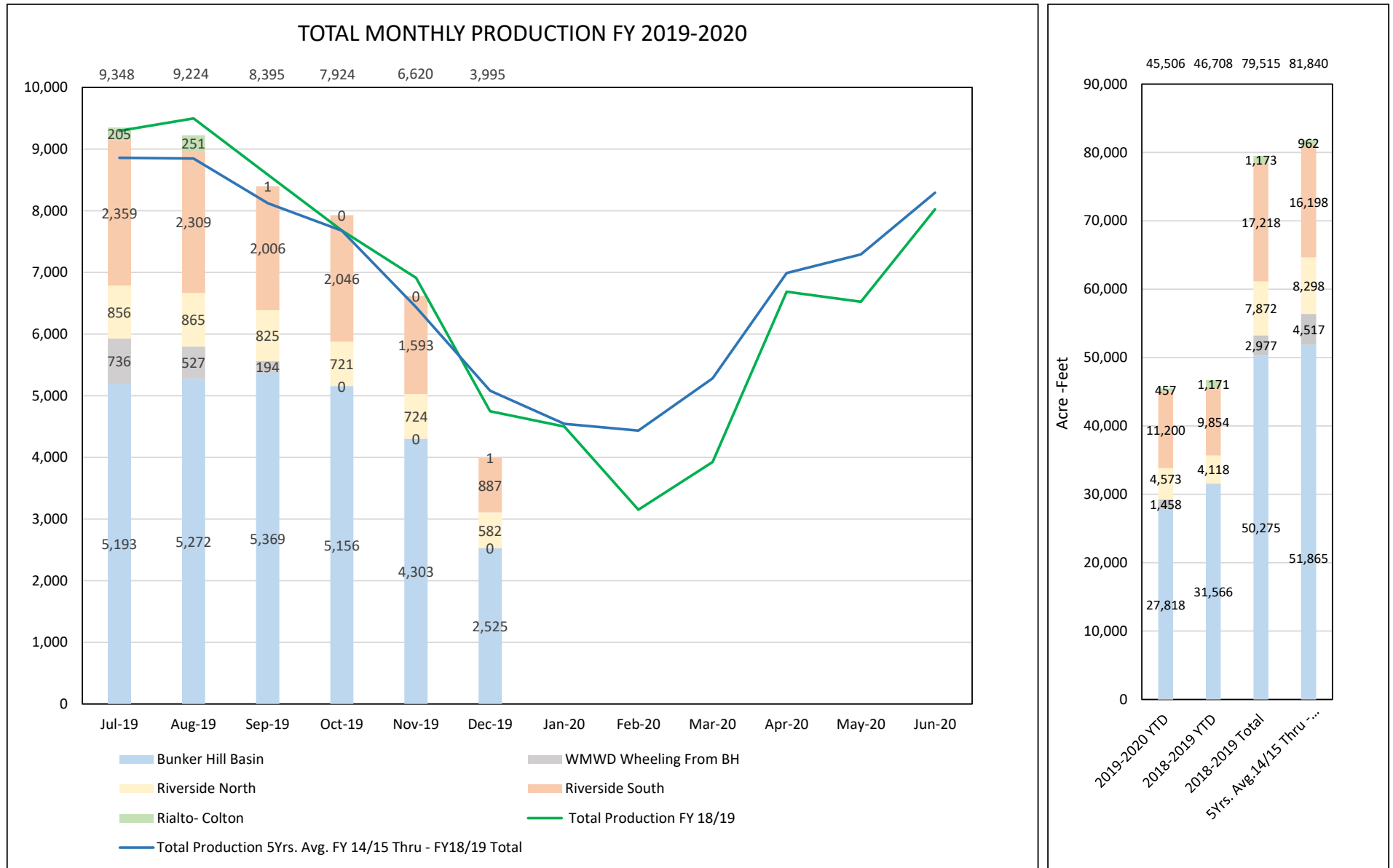


FIGURE 2: RPU WATER - TOTAL PRODUCTION REPORT - CALENDAR YEAR 2019

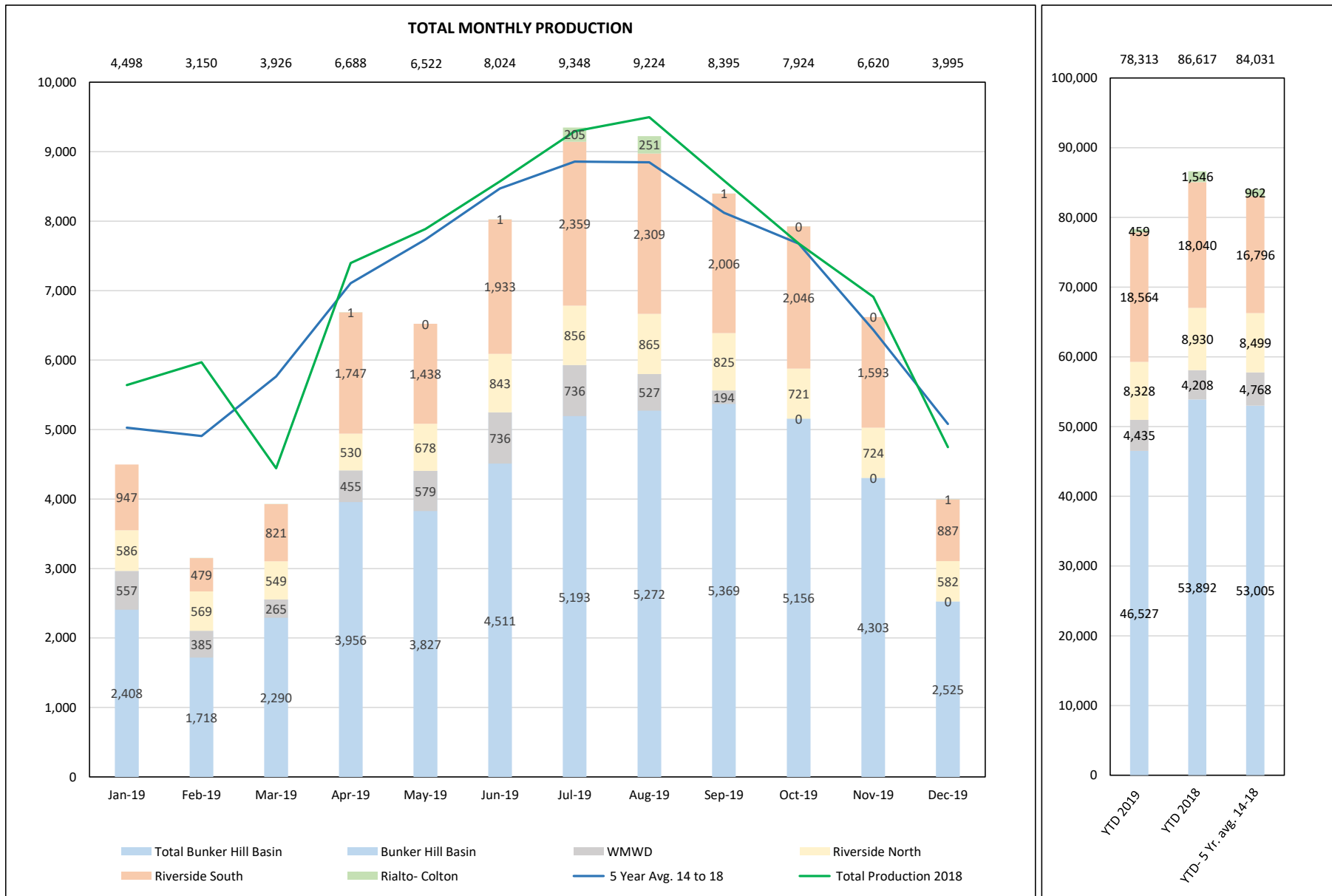


FIGURE 3: RPU WATER - TOTAL PRODUCTION REPORT

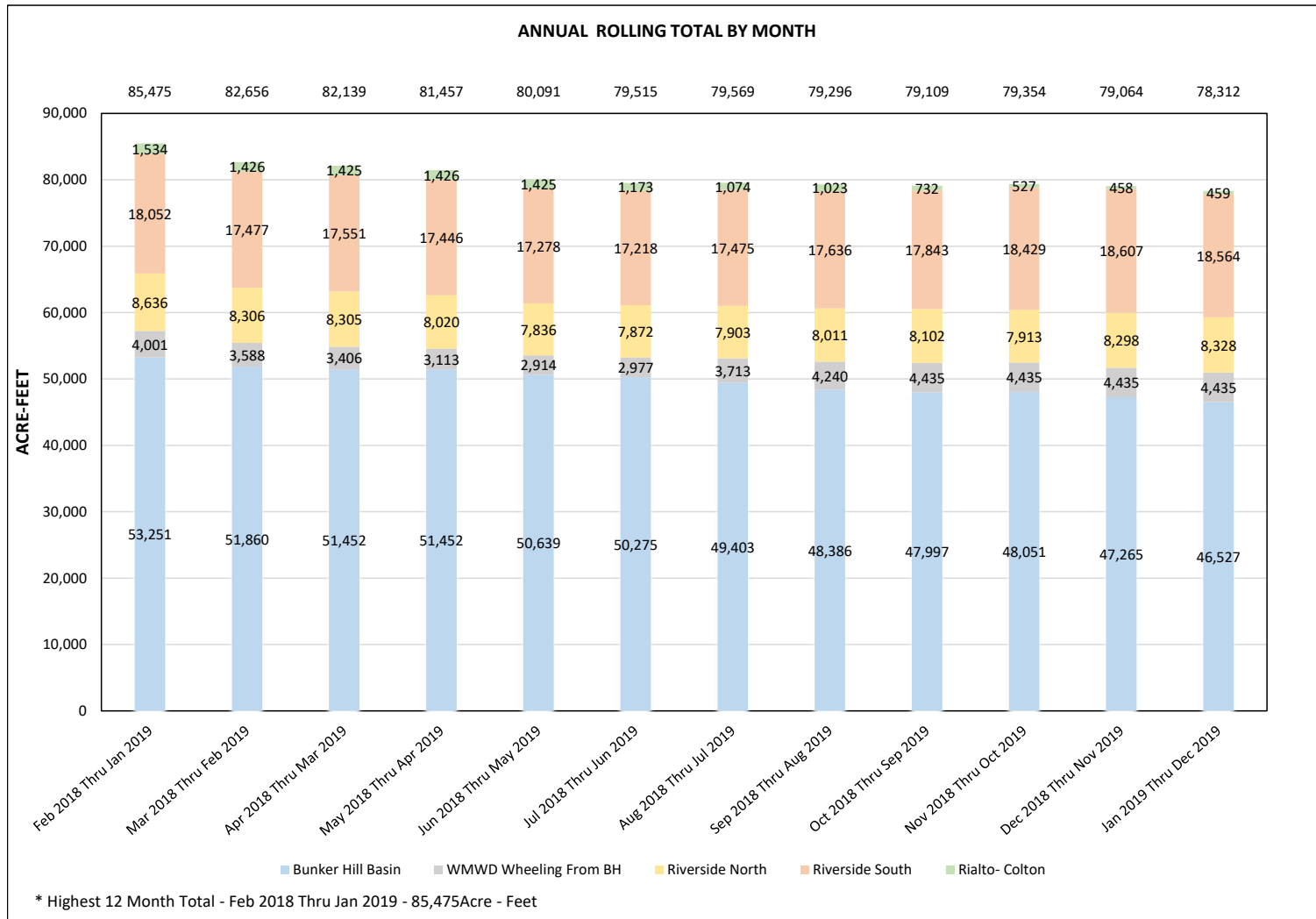


FIGURE 4: RPU WATER- TOTAL MONTHLY CONSUMPTION REPORT

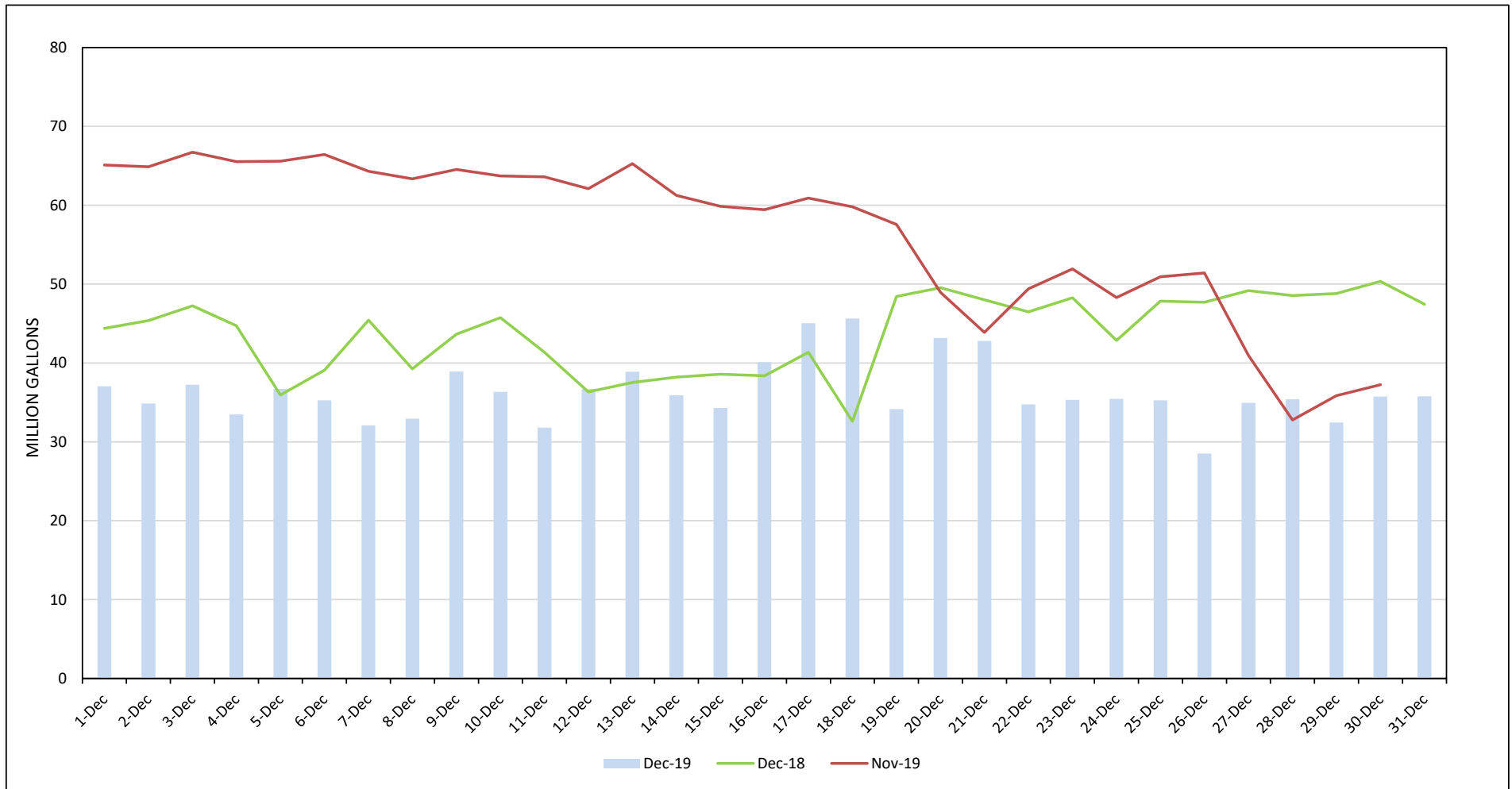


FIGURE 5: RPU WATER - TOTAL GPCD AND R-GPCD ANNUAL ROLLING

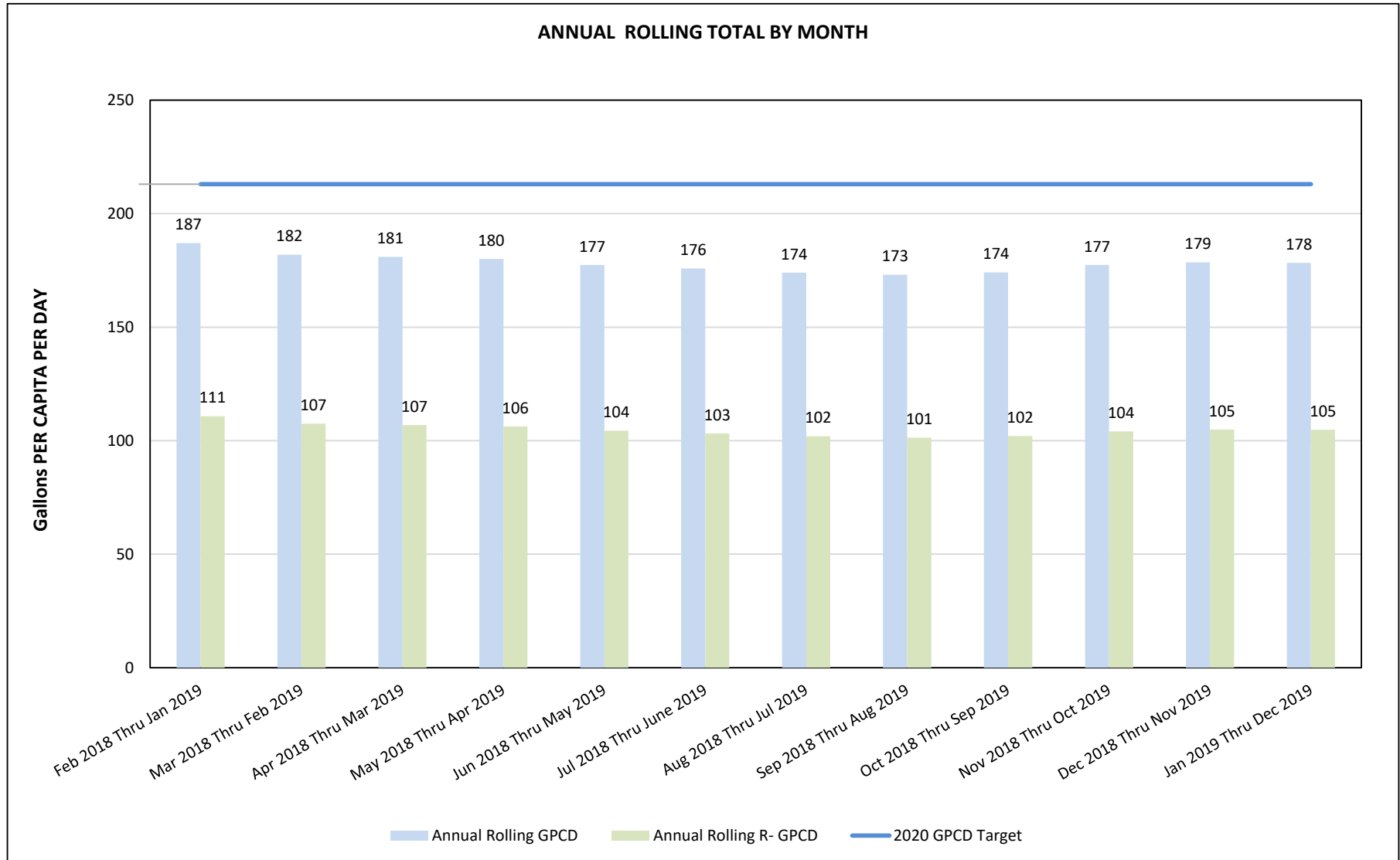
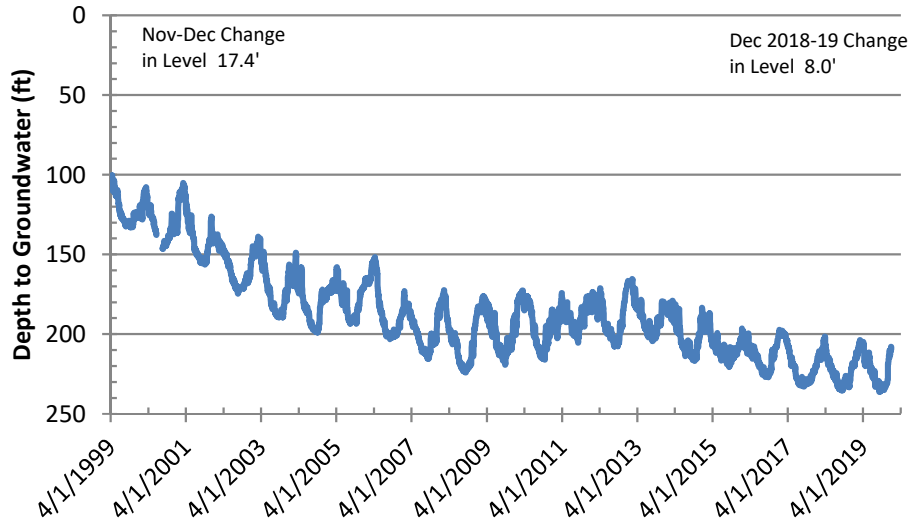


Figure 6: Basin Groundwater Levels

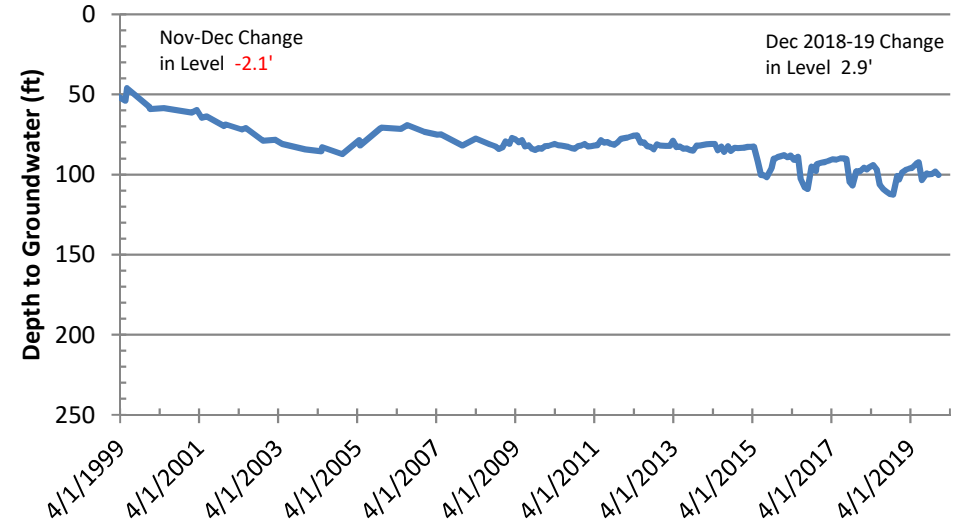
Bunker Hill Basin

Sierra High School (USGS)



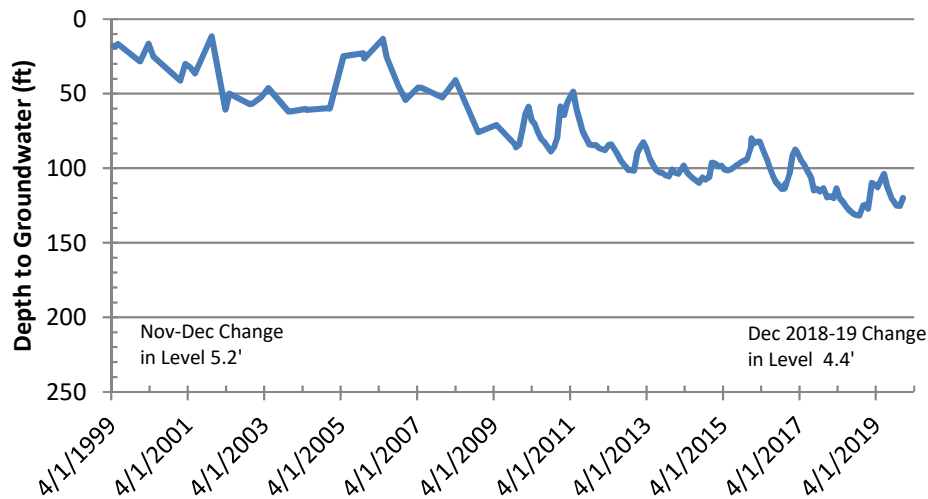
Rialto-Colton Basin

Johnson 1



Riverside North Basin

Flume 5



Riverside South Basin

Cunningham

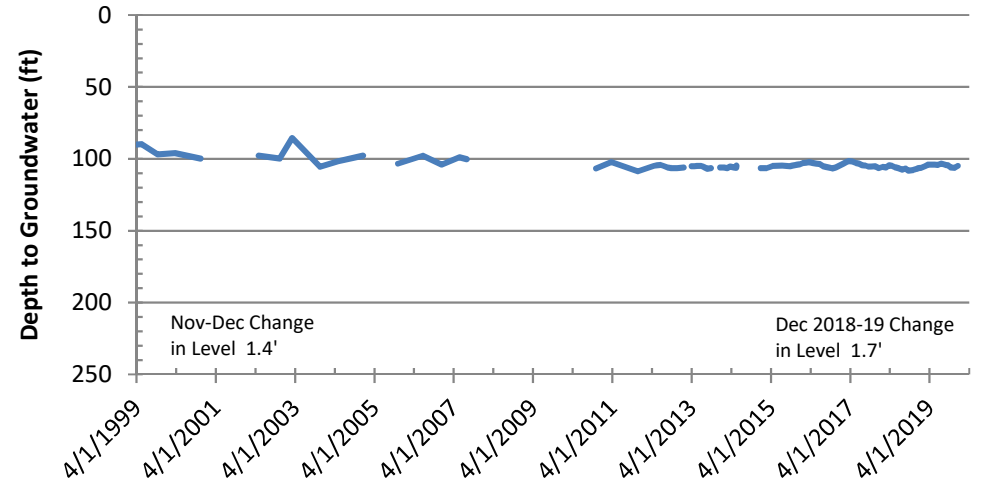


Figure 7: Groundwater Basin Vicinity Map

