



Urban Forestry Policy Manual, Street Tree Inspections and Removals

Public Works Department

Cultural Heritage Board
February 19, 2020

RiversideCA.gov

1

BACKGROUND

On July 17, 2019 a Certificate of Appropriateness case was presented to the Cultural Heritage Board.

The Board requested the Public Works Urban Forestry Division return to provide a presentation on how the City approaches street trees in historic districts.



2

RiversideCA.gov

2

URBAN FORESTRY POLICY MANUAL

The Urban Forestry Policy Manual provides guidelines for the preservation and protection of our tree heritage and the Urban Forest of Riverside.

Last revised in 2015, with the assistance of a Park and Recreation ad-hoc committee, the Manual was approved by the Park and Recreation Commission with final approval given by the City Council.



3

RiversideCA.gov

3

WHO CARES FOR THE URBAN & COMMUNITY FOREST?

City Council

Park & Recreation
Commission

Urban & Community
Forest Ad-Hoc
Committee

Public Works
Department



4

RiversideCA.gov

4

TREE CARE GUIDELINES

Cultural Practices

Pest Control



Need for Pruning

Pruning Specs



5

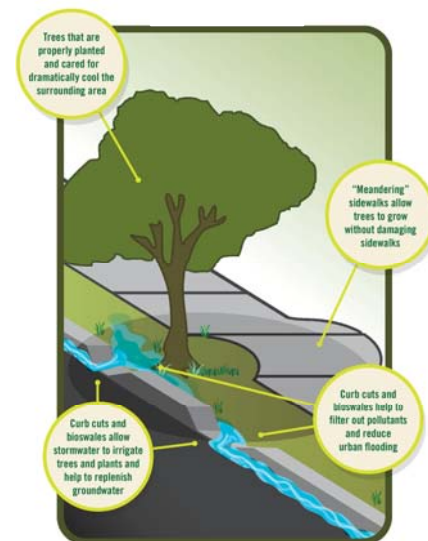
RiversideCA.gov

5

TREE PRESERVATION GUIDELINES

Over the years, broken and damaged sidewalks, curbs, gutters and driveways will have to be replaced throughout the City.

Whenever possible curbs, gutters and sidewalks should be meandered away from the tree thereby providing more growing space for roots.



6



RiversideCA.gov

6

TREE PRESERVATION GUIDELINES (CONT'D)

To manage this process and protect existing trees, the following guidelines have been established:

- Root Pruning
- Sidewalk Renovation
- Curb and Gutter Replacement
- Recovery Period
- Construction Projects on City Property
- Release Requirements
- Protecting Roots From Vehicular Compaction



RiversideCA.gov

7

TREE REMOVAL GUIDELINES

The Public Works Director or the Director's designee shall have the authority to remove any hazardous, diseased or declining trees, providing that the removals meet the existing criteria as stated in the policy.

The Director shall provide the Park and Recreation Commission with a quarterly listing of the tree removals for the Commission's review. The list shall include the locations of the trees and the reason for removal.



RiversideCA.gov

8

TREE REMOVAL GUIDELINES (CONT'D)

- Hazard Tree Removal
- “Inappropriate” Tree Removal
- Removals Because of Economic Considerations



9

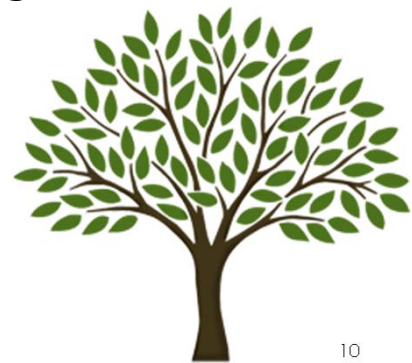
RiversideCA.gov

9

MASTER URBAN FOREST PLAN GUIDELINES

One of the most important aspects of caring for Riverside's trees is to ensure an ongoing heritage of appropriately planted trees for future generations.

All trees planted must conform to the Master Urban Forest Plan, which designates the species of City trees to be planted on each street.



10



RiversideCA.gov

10

RECOMMENDATIONS

That the Cultural Heritage Board receive and file the Presentation for the Urban Forestry Policy Manual, Street Tree Inspections, and Removals.



11

RiversideCA.gov