



# RIVERSIDE PUBLIC UTILITIES

## Board Memorandum

**BOARD OF PUBLIC UTILITIES**

**DATE:** March 9, 2020

**GENERAL MANAGER'S REPORT**

**ITEM NO:** 15

**SUBJECT: MONTHLY WATER REPORT – January 2020**

In January, RPU's total water production was 5,009 acre-feet (AF) as shown in Figures 1 and 2. RPU's annual rolling production totals by month are shown in Figure 3. In January, the peak water usage on the potable water distribution system was 52.3 million gallons per day (MGD) and occurred on January 31, 2020 as shown on Figure 4.

RPU's potable water supply, including deliveries to Western Municipal Water District (WMWD), totaled 4,403 AF, which increased from last January by 279 AF. Under the Cooperative Agreement for Water Production and Conveyance with WMWD, 485 AF was wheeled to WMWD during January as shown in Figures 1 and 2. During this 2019/20 fiscal year, a total of 4,218 AF of potable water has been delivered to WMWD.

In January, RPU's Gallons Per-Capita per Day (GPCD) was 133, and its Residential Gallons Per-Capita per Day (R-GPCD) was 78. RPU's annual rolling GPCD was 180, which is below the compliance target specified in SB X7-7 (i.e. 20% reduction by 2020) of 213. RPU's annual rolling R-GPCD was 106 as shown on Figure 5.

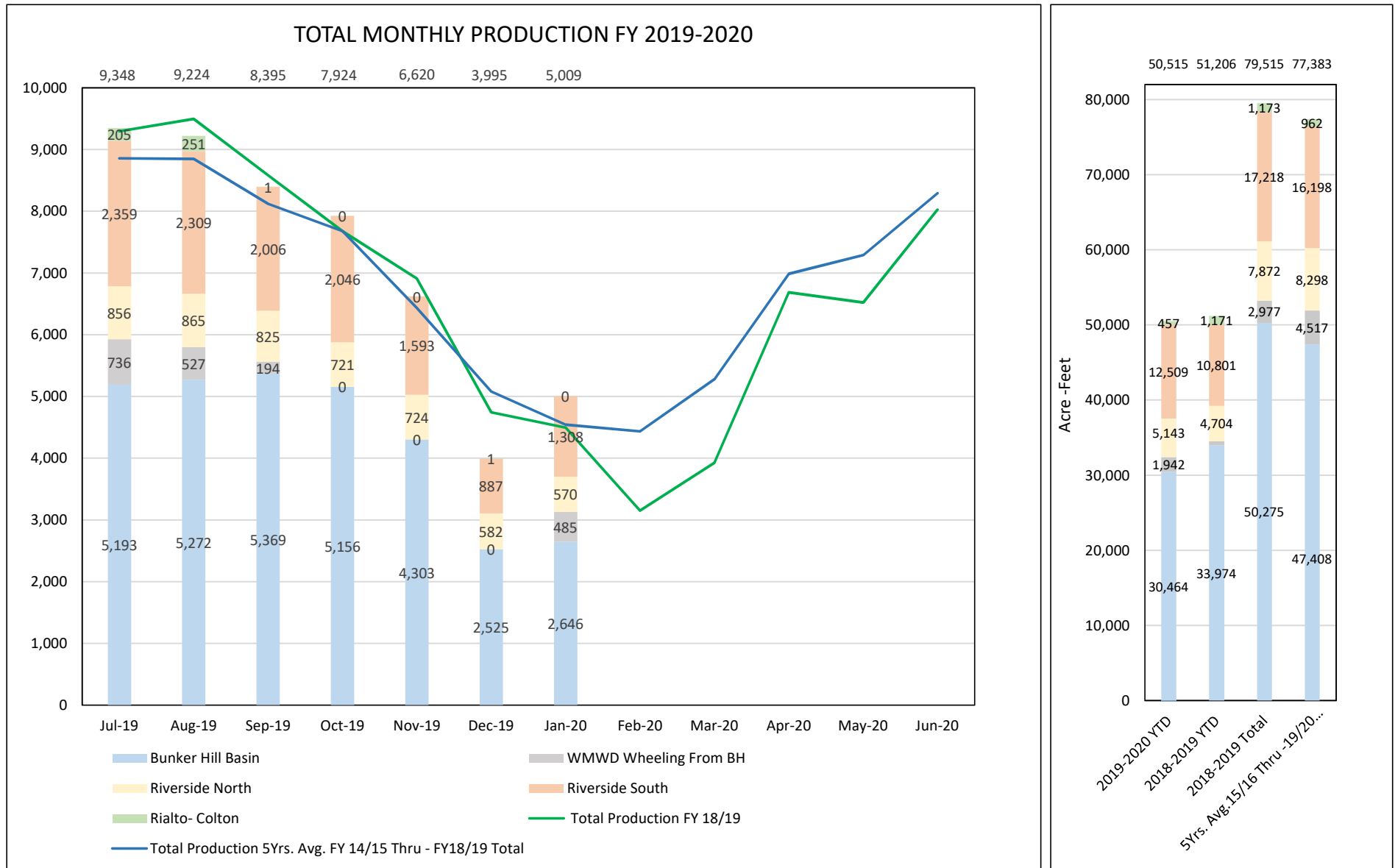
Weather conditions within the City of Riverside showed that January of 2020 was warmer by 0.8 degrees from January last year and experienced a decrease of 2.12 inches of rainfall compared to January 2019.

There were no significant events for the water system in January 2020.

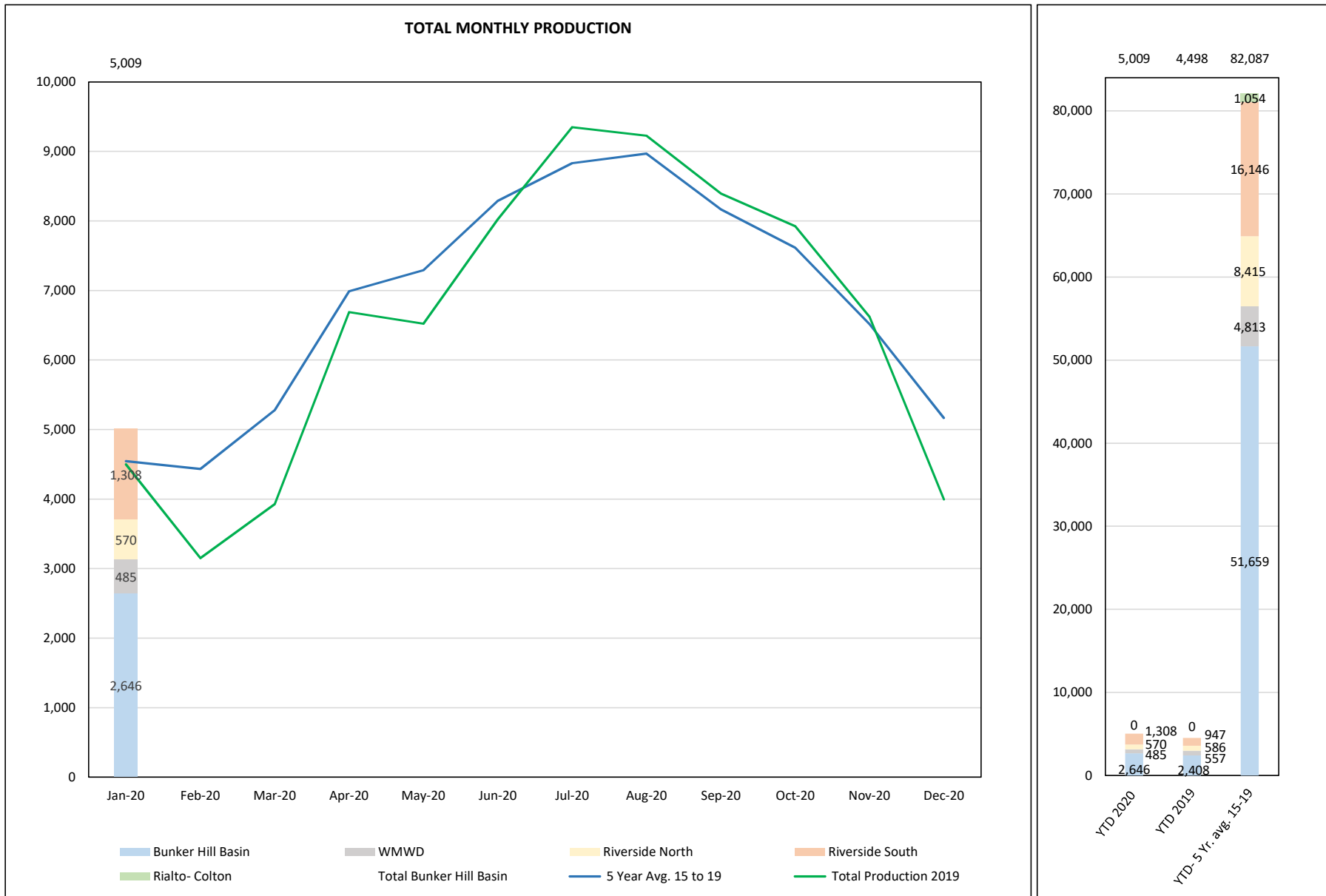
**Basin Groundwater Levels**

Groundwater levels in the Bunker Hill, Rialto-Colton, and Riverside North basins are continuing to show a long-term declining trend, while groundwater levels in the Riverside South Basin remain relatively stable as shown in Figure 6. Water levels increased by 7 feet in the Bunker Hill Basin as compared to January of last year. Water levels increased by 5 feet in the Rialto-Colton Basin as compared to January of last year. Water levels increased by 14 feet in the Riverside North Basin and remained unchanged in the Riverside South Basin as compared to January of last year.

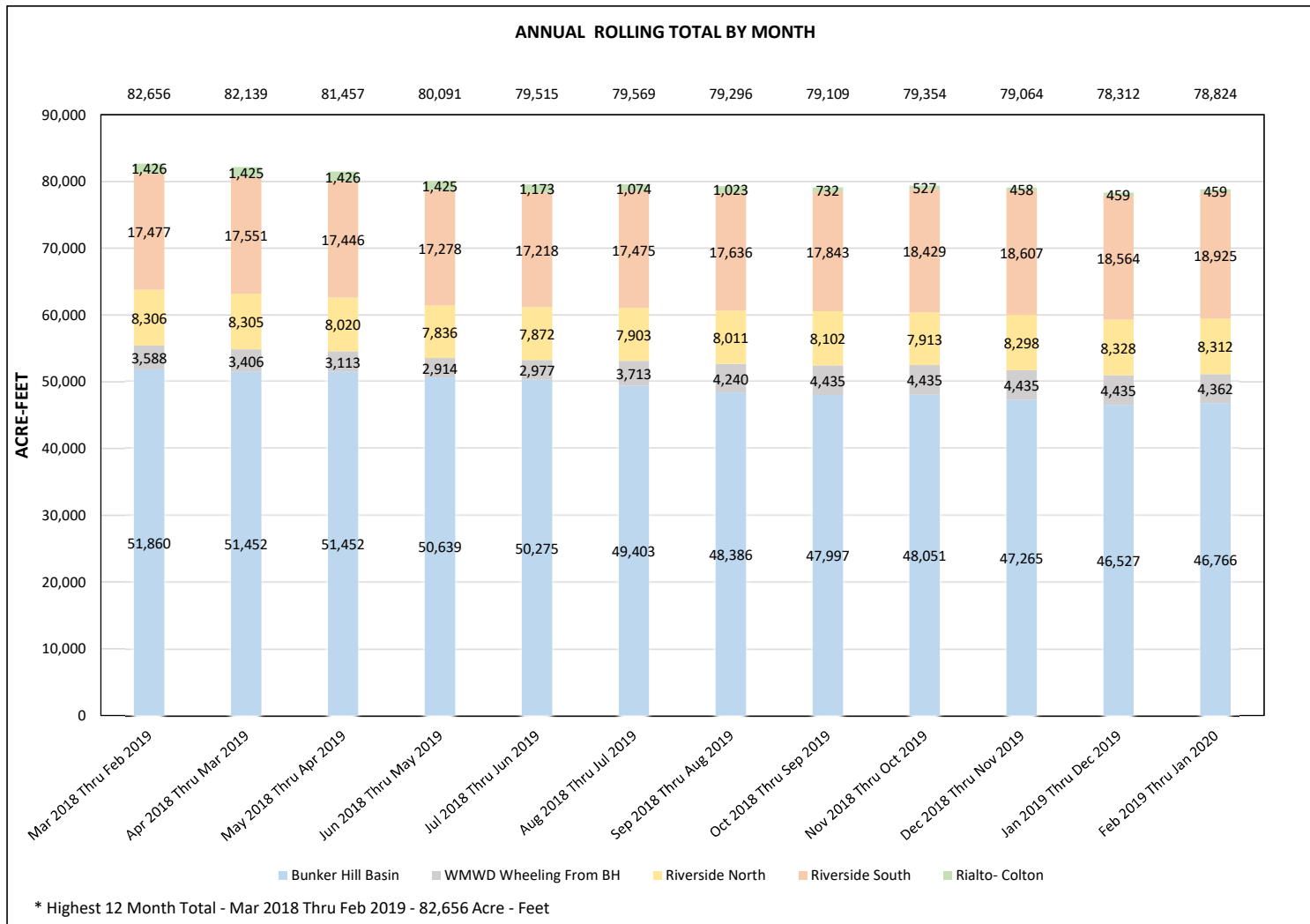
# FIGURE 1: RPU WATER - TOTAL PRODUCTION REPORT- FISCAL YEAR 2019 -2020



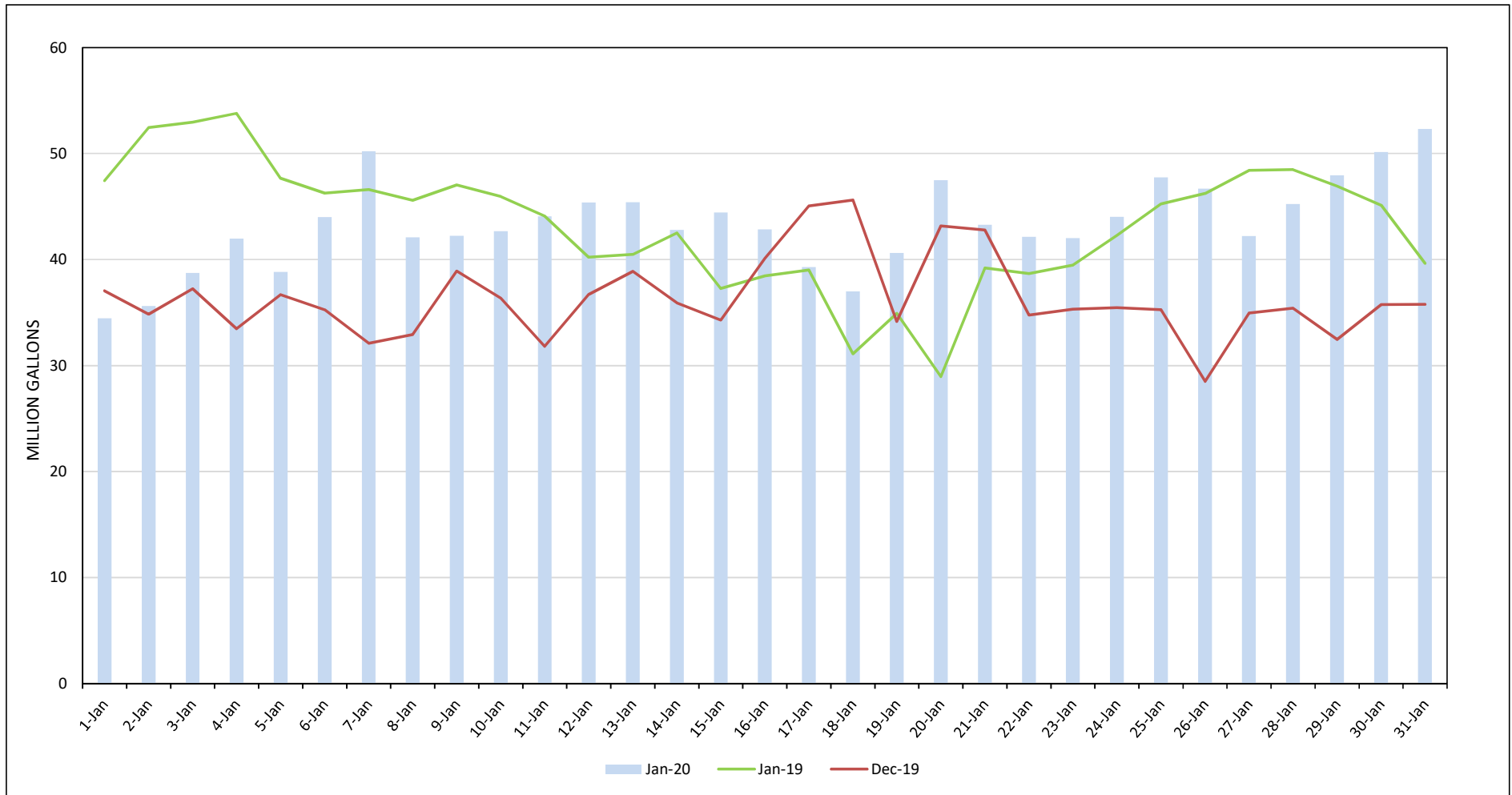
**FIGURE 2: RPU WATER - TOTAL PRODUCTION REPORT - CALENDAR YEAR 2020**



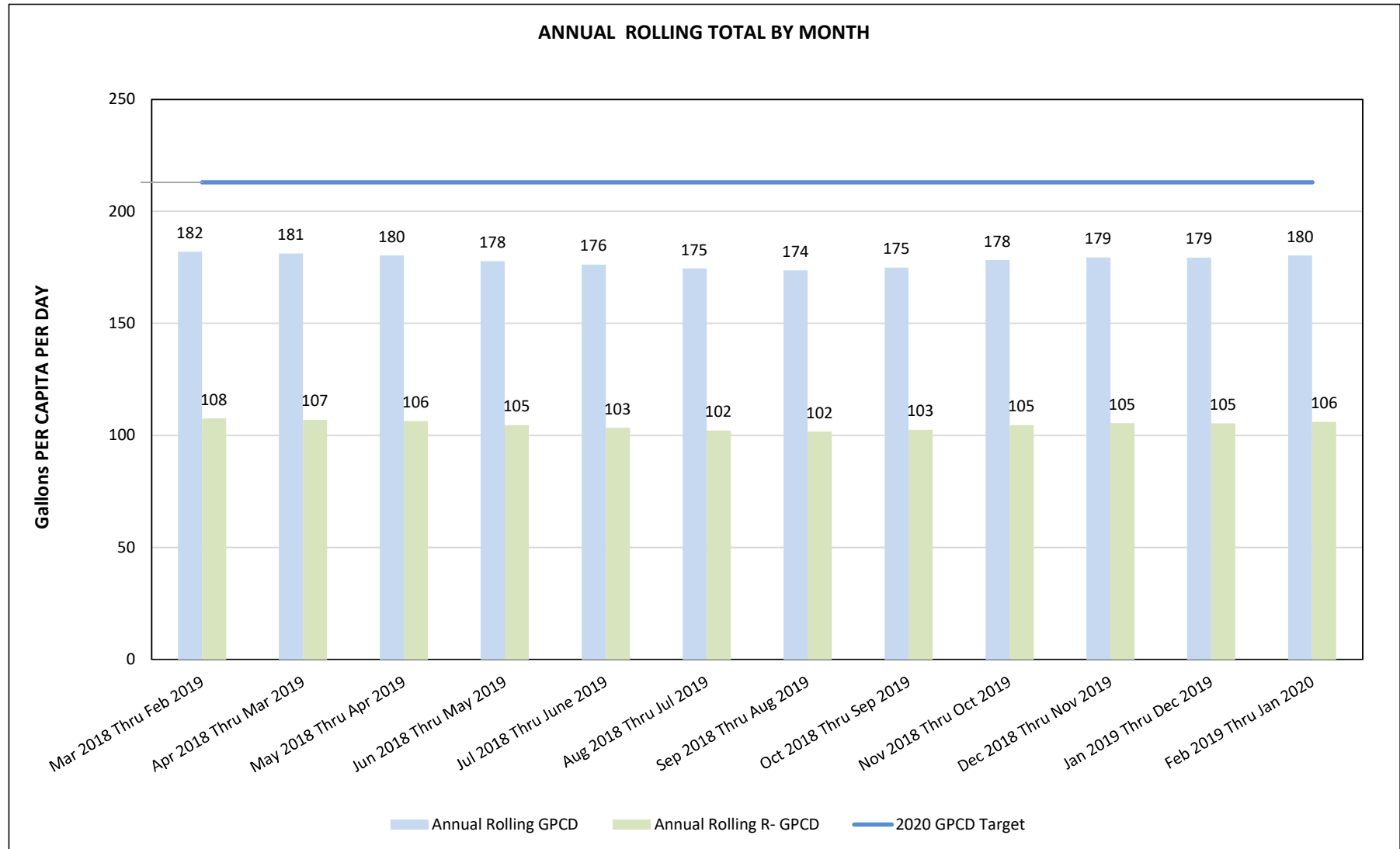
### FIGURE 3: RPU WATER - TOTAL PRODUCTION REPORT



**FIGURE 4: RPU WATER- TOTAL MONTHLY CONSUMPTION REPORT**

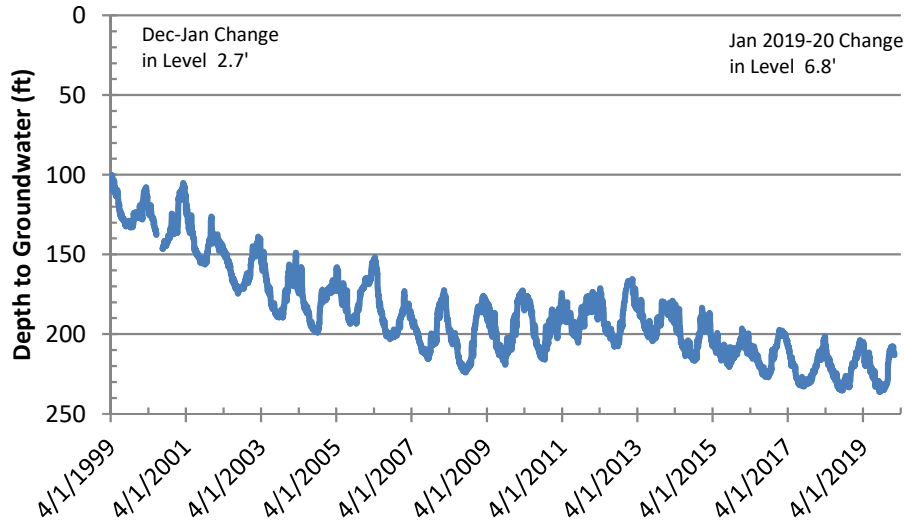


**FIGURE 5: RPU WATER - TOTAL GPCD AND R-GPCD ANNUAL ROLLING**

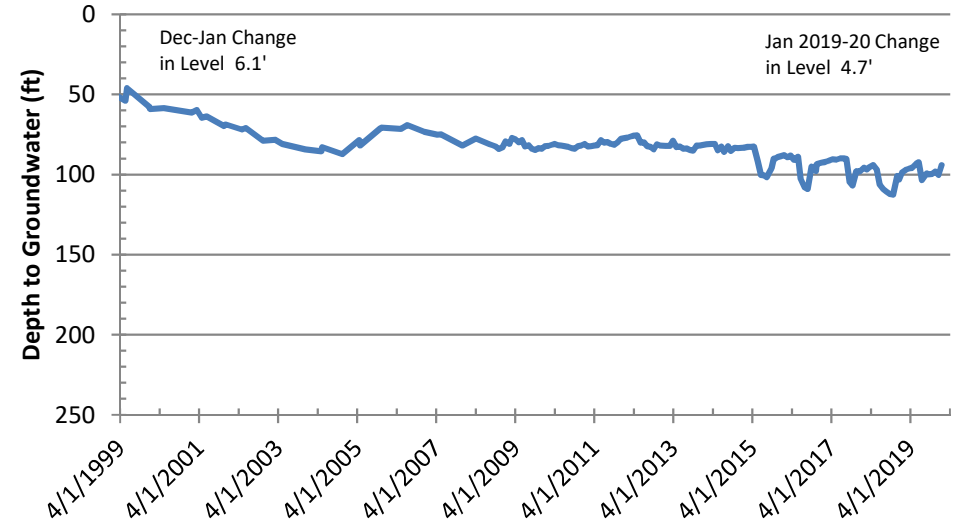


# Figure 6: Basin Groundwater Levels

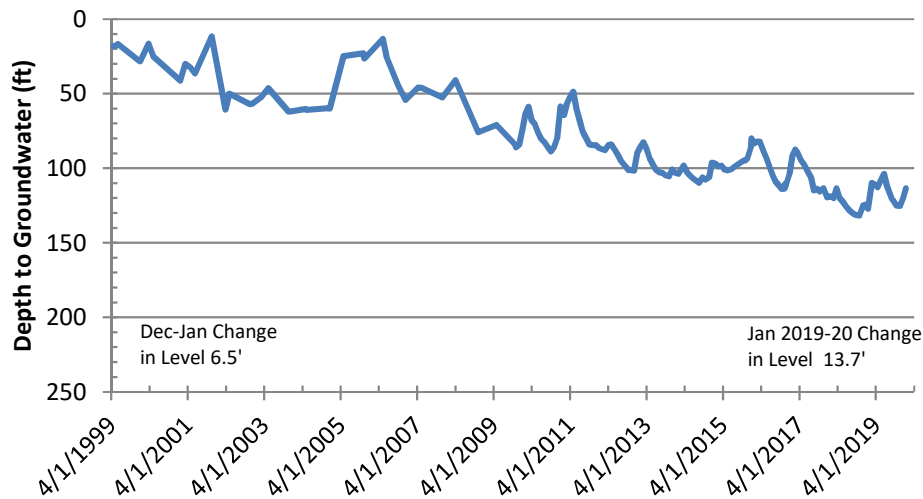
## Bunker Hill Basin Sierra High School (USGS)



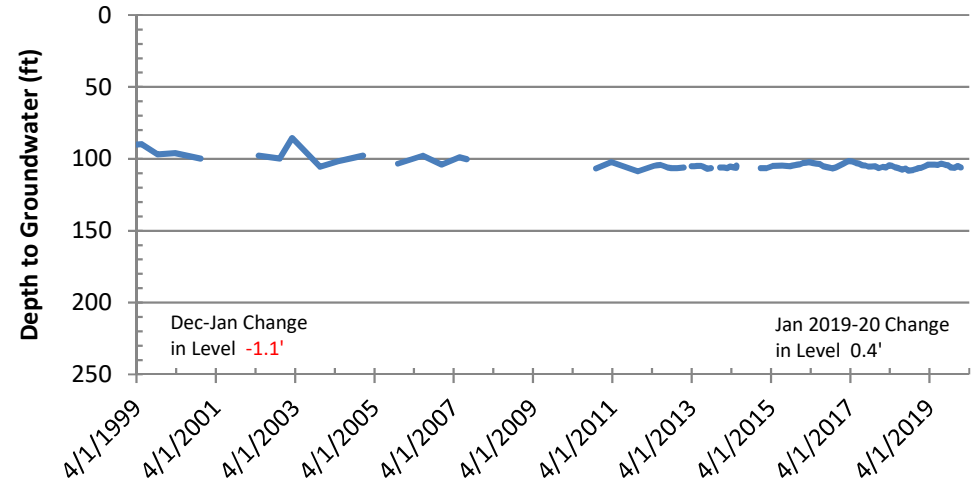
## Rialto-Colton Basin Johnson 1



## Riverside North Basin Flume 5



## Riverside South Basin Cunningham





# Figure 7: Groundwater Basin Vicinity Map

