

PRAED BOOSTER STATION HYDRAULIC TRANSIENT AND STATION SURGE

Riverside Public Utilities

Board of Public Utilities
March 9, 2020

RiversidePublicUtilities.com

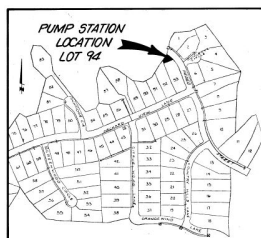


1

1

BACKGROUND

1. Praed Booster Station built in 1987 is located in the southwestern part of the city.
2. Small closed zone that operates without the support of a reservoir and is solely supplied with water from Praed Booster



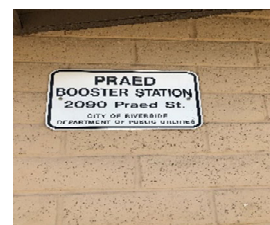
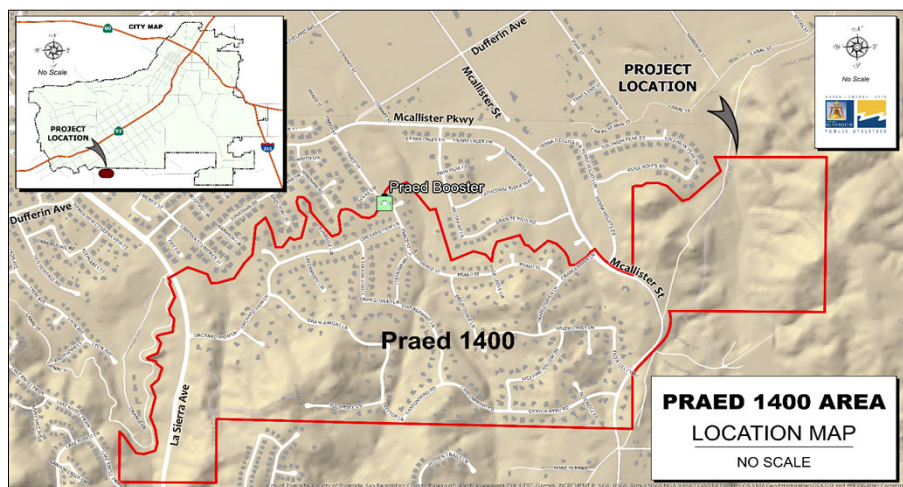
RiversidePublicUtilities.com



2

2

INTERCONNECTION LOCATION



3

RiversidePublicUtilities.com

3

TIMELINE OF EVENTS

September 2015:



1. Customers of a newly developed housing tract began to experience inconsistent pressure issues with occasional low pressure.
2. Through RPU staff investigations, most issues were rectified.
3. Although most issues were rectified, customers were still experiencing periodic low pressures.



4

RiversidePublicUtilities.com

4

TIMELINE OF EVENTS



October 2019:

1. An RFQ was sent to consultants for the assessment of the hydraulic transient and station surge issues being experienced in the Praed pressure zone.
2. The intent was to seek qualified engineering firms to evaluate and propose solutions that address the pressure fluctuations.



5

RiversidePublicUtilities.com

5

TIMELINE OF EVENTS

November 2019:

1. Two consulting firms responded to the RFP;
 - A. CDM Smith
 - B. Westin Technologies
2. Through a predetermined scoring methodology, designated staff members reviewed and scored the RFP.
3. CDM Smith was chosen as the best consultant based on final scores.



6

RiversidePublicUtilities.com

6

PRAED BOOSTER STATION



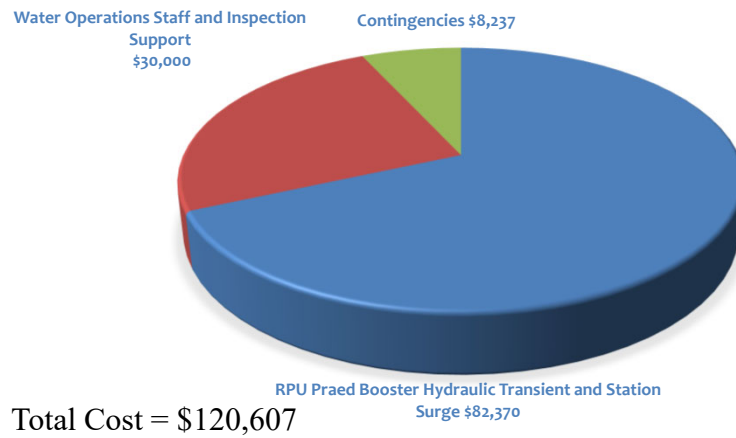
RiversidePublicUtilities.com



7

7

FISCAL IMPACT



RiversidePublicUtilities.com



8

8

RECOMMENDATIONS

That the Board of Public Utilities:

1. Approve a Supplemental Agreement with CDM Smith, Inc. in response to a Request for Proposals for Riverside Public Utilities Praed Booster Hydraulic Transient and Station Surge Issues, in an amount not to exceed \$82,370.00;
2. Authorize change order authority in the amount of 10% or \$8,237 for Riverside Public Utilities Praed Booster Hydraulic Transient and Station Surge Issues;

RiversidePublicUtilities.com



9

9

RECOMMENDATIONS

3. Approve Work Order No. 2016310 for a total expenditure of in the amount of \$120,607 which includes CDM Smith, staff support and change order authority costs for Riverside Public Utilities Praed Booster Hydraulic Transient and Station Surge Issues; and
4. Authorize the City Manager, or designee, to execute the Supplemental Agreement with CDM Smith, Inc. of Carlsbad, California, including making minor and non-substantive changes and to sign all documents and instruments necessary to complete the transactions.

RiversidePublicUtilities.com



10

10