

DEMOLITION FLOOR PLAN

1/8"=1'-0"



CONSULTANTS

ADULT DAY HEALTH CARE FACILITY REMODEL

3610 PARK SIERRA DR., RIVERSIDE, CA 92506

THIS DRAWING AND THE DESIGN, ARRANGEMENTS, DEPICTIONS, IDEAS AND OTHER INFORMATION CONTAINED HEREIN CONSTITUTE UNPUBLISHED WORK OF BROESKE ARCHITECTS & ASSOCIATES, INC. AND SHALL REMAIN THE PROPERTY OF BROESKE ARCHITECTS & ASSOCIATES, INC. IN PERPETUITY. NO PART THEREOF SHALL BE REPRODUCED, COPIED, DISCLOSED, DISTRIBUTED, SOLD, PUBLISHED OR OTHERWISE USED IN ANY WAY WITHOUT THE ADVANCE EXPRESS WRITTEN CONSENT OF BROESKE ARCHITECTS & ASSOCIATES, INC. VISUAL CONTACT WITH THE ABOVE DRAWINGS, OR ANY PART THEREOF, SHALL CONSTITUTE CONCLUSIVE EVIDENCE OF ACCEPTANCE OF THESE RESTRICTIONS.

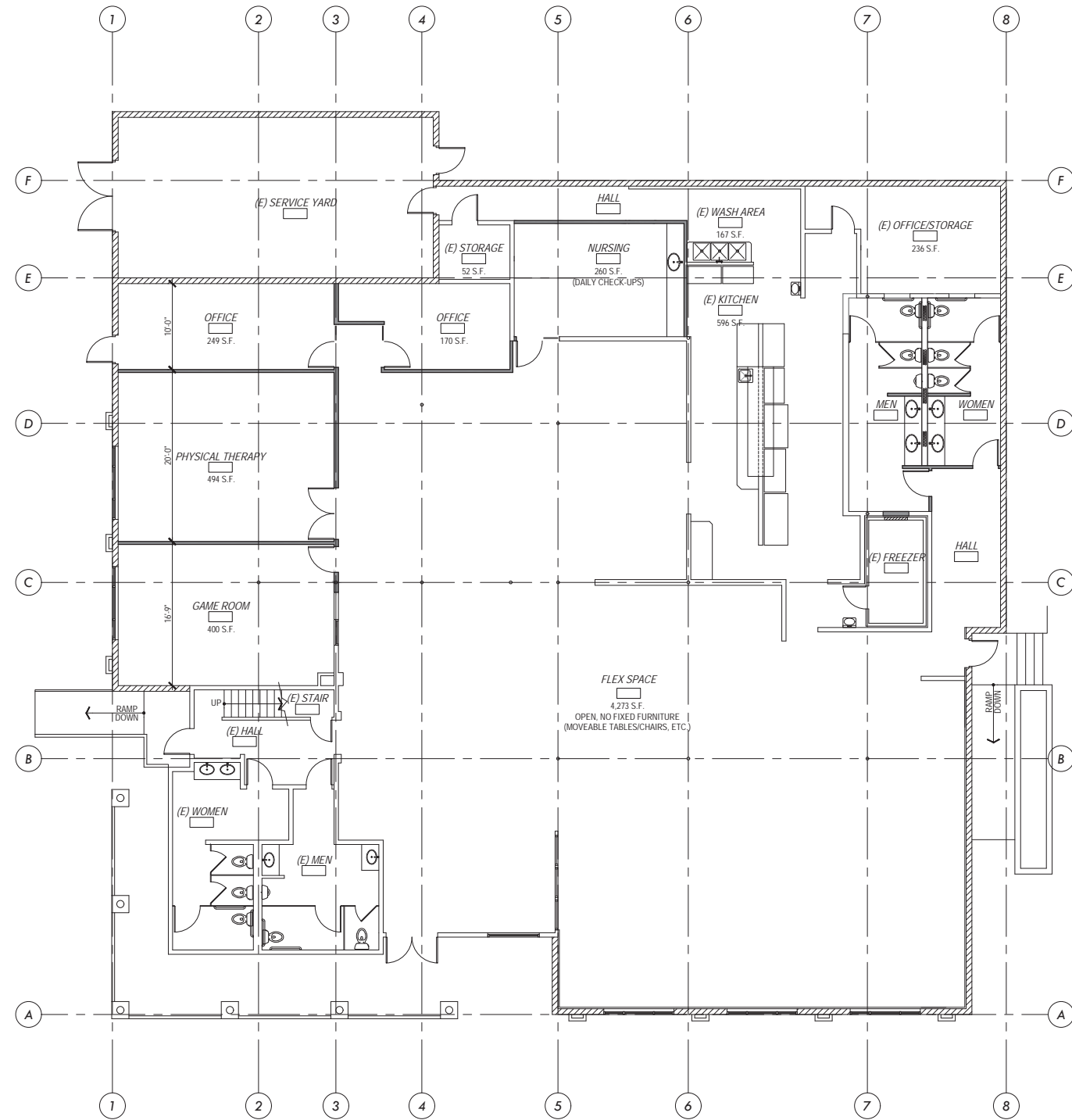
APN	•
JOB NO.	• 19-021
DATE	• 2-4-2020
DRAWN BY	• M. PRICE
CHECKED BY	• --
SCALE	• AS NOTED
REVISIONS	△

SHEET TITLE

DEMOLITION FLOOR PLAN

SHEET NO.

A2.1



REMODEL FLOOR PLAN

1/8"=1'-0"



WALL LEGEND

- NEW 2x STUDS @ 16" O.C. (U.N.O.)
- (E) WALL ITEMS TO REMAIN- PATCH & REPAIR AS REQUIRED

CONSULTANTS

ADULT DAY HEALTH CARE FACILITY REMODEL

3610 PARK SIERRA DR., RIVERSIDE, CA 92506

THIS DRAWING AND THE DESIGN, ARRANGEMENTS, DEPICTIONS, IDEAS AND OTHER INFORMATION CONTAINED HEREIN CONSTITUTE UNPUBLISHED WORK OF BROESKE ARCHITECTS & ASSOCIATES, INC. AND SHALL REMAIN THE PROPERTY OF BROESKE ARCHITECTS & ASSOCIATES, INC. IN PERPETUITY. NO PART THEREOF SHALL BE REPRODUCED, COPIED, DISCLOSED, DISTRIBUTED, SOLD, PUBLISHED OR OTHERWISE USED IN ANY WAY WITHOUT THE ADVANCE EXPRESS WRITTEN CONSENT OF BROESKE ARCHITECTS & ASSOCIATES, INC. VISUAL CONTACT WITH THE ABOVE DRAWINGS, OR ANY PART THEREOF, SHALL CONSTITUTE CONCLUSIVE EVIDENCE OF ACCEPTANCE OF THESE RESTRICTIONS.

APN	•
JOB NO.	• 19-021
DATE	• 2-4-2020
DRAWN BY	• M. PRICE
CHECKED BY	• --
SCALE	• AS NOTED

REVISIONS



SHEET TITLE

REMODEL FLOOR PLAN

SHEET NO.

A2.2