

**PROPOSED ORDINANCE TO ADOPT VEHICLE MILES
TRAVELED THRESHOLDS FOR CALIFORNIA
ENVIRONMENTAL QUALITY ACT COMPLIANCE
RELATED TO TRANSPORTATION ANALYSIS**

Public Works Department

Planning Commission
Agenda Item: 4
April 14th, 2020

RiversideCA.gov

1

BACKGROUND

- Historically, delay and congestion were the metrics used when evaluating transportation impacts.
- To implement SB 743, the City of Riverside needs to determine appropriate VMT methodologies, thresholds, and feasible mitigation measures.
- WRCOG has prepared analysis to assist its member agencies in the transition.
- SB 743 must be implemented by July 1, 2020.



2

RiversideCA.gov

2

DISCUSSION

- Since SB 743 represents a significant departure from the City of Riverside's current practice, the City must address the following questions below prior to taking any action:
 - Methodology
 - Thresholds
 - Mitigation



3

RiversideCA.gov

3

METHODOLOGY

- Recommend use of the Riverside County Travel Demand Model (RIVTAM / RIVCOM)
- Jurisdictions and technical experts have been utilizing RIVTAM since 2009.
- A new version of the Riverside County Travel Demand Model is being developed by WRCOG and will be ready for use by Fall 2020.



4

RiversideCA.gov

4

THRESHOLDS (OPTIONS)

- Thresholds consistent with OPR's Technical Advisory, recommending that proposed developments generate VMT per person that is 15% below existing VMT per capita;
- Thresholds consistent with Lead Agency air quality, greenhouse gas emissions reduction, and energy conservation goals;
- Thresholds consistent with the Regional Transportation Plan / Sustainable Communities Strategy future year VMT projects by jurisdiction or subregion; and
- Thresholds based on baseline VMT performance by jurisdiction or subregion.



5

RiversideCA.gov

5

REGARDING OPR'S GUIDELINES

- State Department of Transportation (Caltrans) has released guidelines supporting OPR-recommended thresholds.
- Other agencies, including Irvine, Los Angeles, Santa Ana, San Jose, and Beverly Hills have or are anticipated to adopt thresholds generally consistent with OPR / Caltrans



6

RiversideCA.gov

6

RECOMMENDED THRESHOLDS

- For new residential projects, utilizing a threshold consistent with 15% below the City's current VMT Per Capita.
- For new office projects, utilizing a threshold consistent with 15% below the City's current VMT Per Employee.
- For new retail & other land use projects, utilizing a threshold consistent with the City's current net total VMT.



7

RiversideCA.gov

7

MITIGATION

- Diversifying land use
- Improving pedestrian networks
- Implementing traffic calming infrastructure
- Building low-street bicycle network improvements



8

RiversideCA.gov

8

MITIGATION

- Encouraging telecommuting and alternative work schedules
- Providing ride-share programs
- Transit passes
- Mitigation Bank (under development using SB 2 funds)



9

RiversideCA.gov

9

UPDATED TRAFFIC IMPACT ANALYSIS GUIDELINES

- Traffic Impact Analysis Guidelines Have Been Updated
- Include a broad set of project screening criteria
- Include a reference to the WRCOG-commissioned online Screening Map



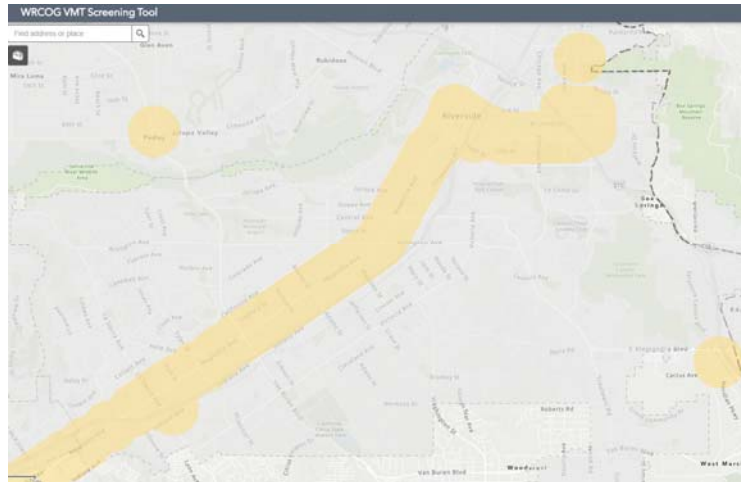
10

RiversideCA.gov

10

SCREENING OPPORTUNITIES

- Qualifying projects in Transit Priority Areas



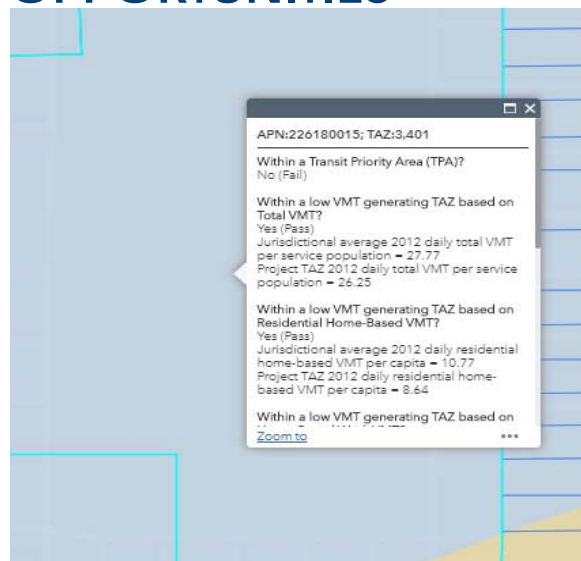
11

RiversideCA.gov

11

SCREENING OPPORTUNITIES

- Qualifying projects in low-VMT areas



12

RiversideCA.gov

12

SCREENING OPPORTUNITIES

- A broad range of project-types including:
- Local serving retail projects less than 50,000 square feet may be presumed to have a less than significant impact absent substantial evidence to the contrary. Local serving retail generally improves the convenience of shopping close to home and has the effect of reducing vehicle travel.
- Local-serving K-12 schools
- Local parks



13

RiversideCA.gov

13

SCREENING OPPORTUNITIES

- Day care centers
- Local-serving gas stations & car-washes
- Local-serving banks
- Local-serving hotels (e.g. non-destination hotels)
- Student housing projects
- 100% Affordable housing projects



14

RiversideCA.gov

14

SCREENING OPPORTUNITIES

- Local serving community colleges that are consistent with the assumptions noted in the RTP/SCS
- Projects consisting of 100% affordable housing
- Projects generating less than 110 daily vehicle trips - generally corresponds to the following "typical" development potentials:
 - 11 single family housing units
 - 16 multi-family, condominiums, or townhouse housing units
 - 10,000 sq. ft. of office
 - 15,000 sq. ft. of light industrial
 - 63,000 sq. ft. of warehousing



15

RiversideCA.gov

15

RECOMMENDATION

That the Planning Commission:

- **RECOMMEND** that the City Council ADOPT a resolution approving Vehicle Miles Traveled thresholds for California Environmental Quality Act compliance related to transportation analysis.



16

RiversideCA.gov

16