



# RIVERSIDE PUBLIC UTILITIES

## Board Memorandum

**BOARD OF PUBLIC UTILITIES**

**DATE:** June 8, 2020

**GENERAL MANAGER'S**

**REPORT ITEM NO:** 17

**SUBJECT: MONTHLY WATER REPORT – April 2020**

In April, RPU's total water production was 4,621 acre-feet (AF) as shown in Figures 1 and 2. RPU's annual rolling production totals by month are shown in Figure 3. In April, the peak water usage on the potable water distribution system was 62.5 million gallons per day (MGD) and occurred on April 30, 2020 as shown on Figure 4.

RPU's potable water supply, including deliveries to Western Municipal Water District (WMWD), totaled 3,996 AF, which decreased from last April by 1,490 AF. Under the Cooperative Agreement for Water Production and Conveyance with WMWD, 262 AF was wheeled to WMWD during April as shown in Figures 1 and 2. During this 2019/20 fiscal year, a total of 5,702 AF of potable water has been delivered to WMWD.

In April, RPU's Gallons Per-Capita per Day (GPCD) was 131, and its Residential Gallons Per-Capita per Day (R-GPCD) was 80. RPU's annual rolling GPCD was 181, which is below the compliance target specified in SB X7-7 (i.e. 20% reduction by 2020) of 213. RPU's annual rolling R-GPCD was 107 as shown on Figure 5.

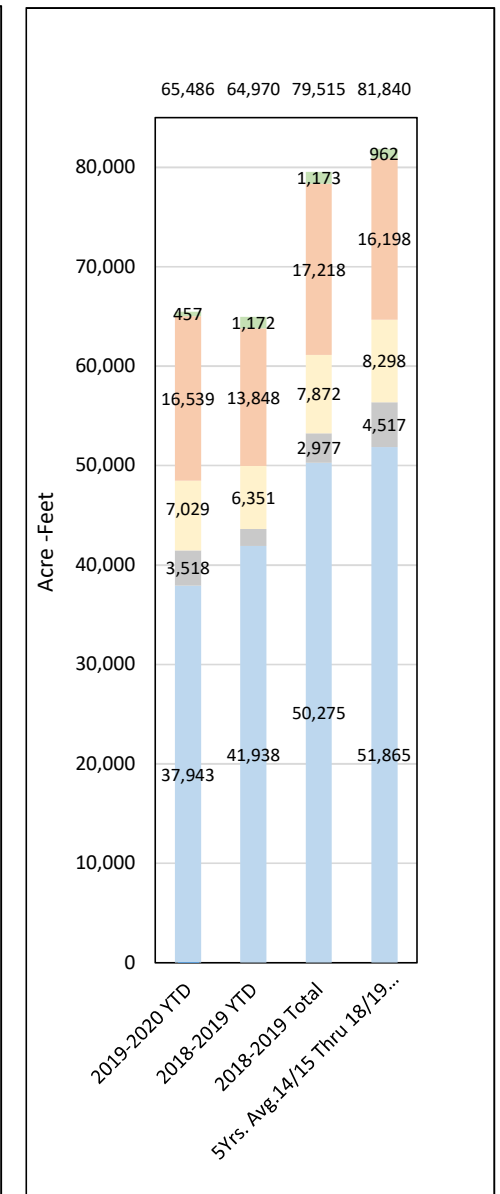
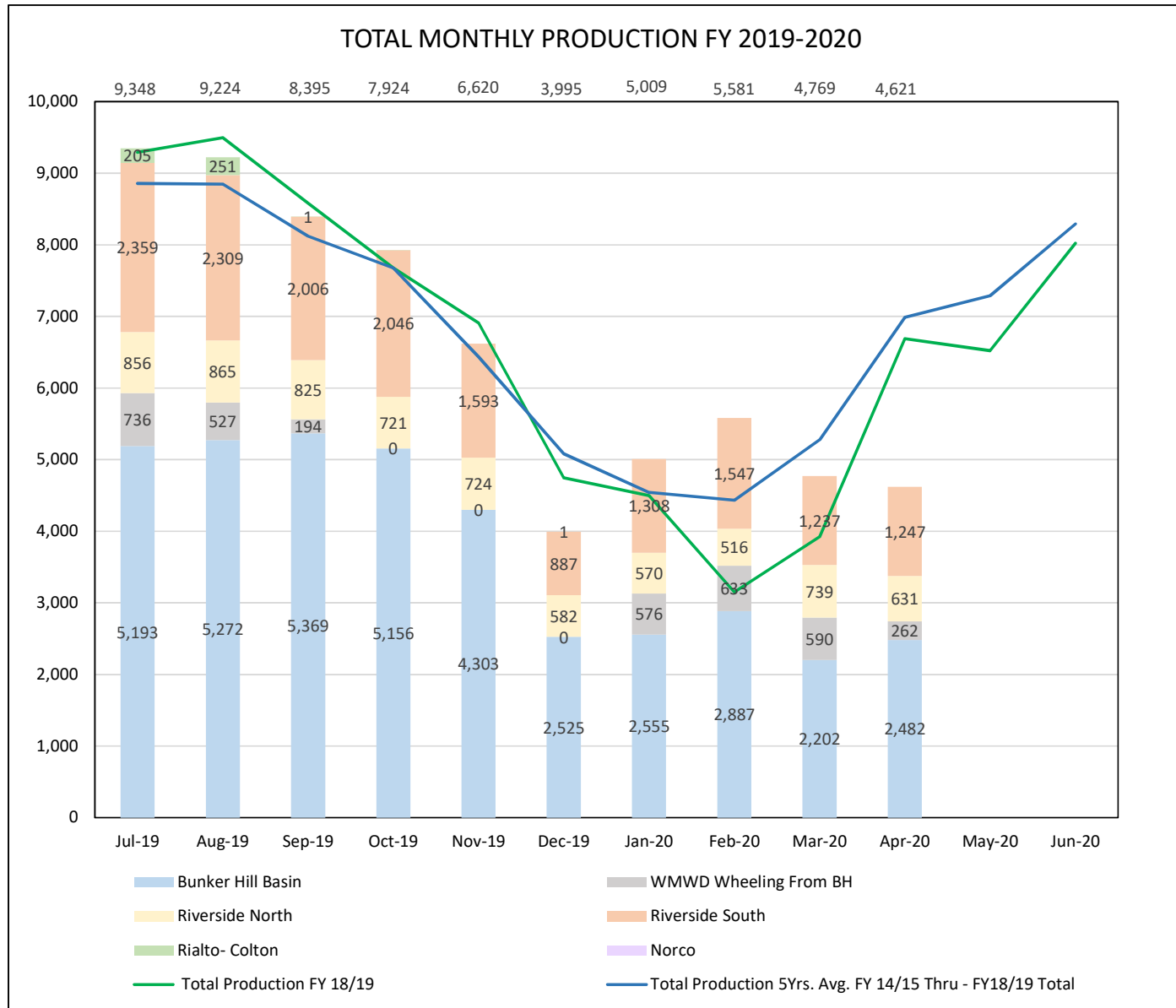
Weather conditions within the City of Riverside showed that April of 2020 was cooler by 5 degrees from April of last year and experienced an increase of 0.43 inches of rainfall compared to April 2019.

There were no significant events for the water system in April 2020.

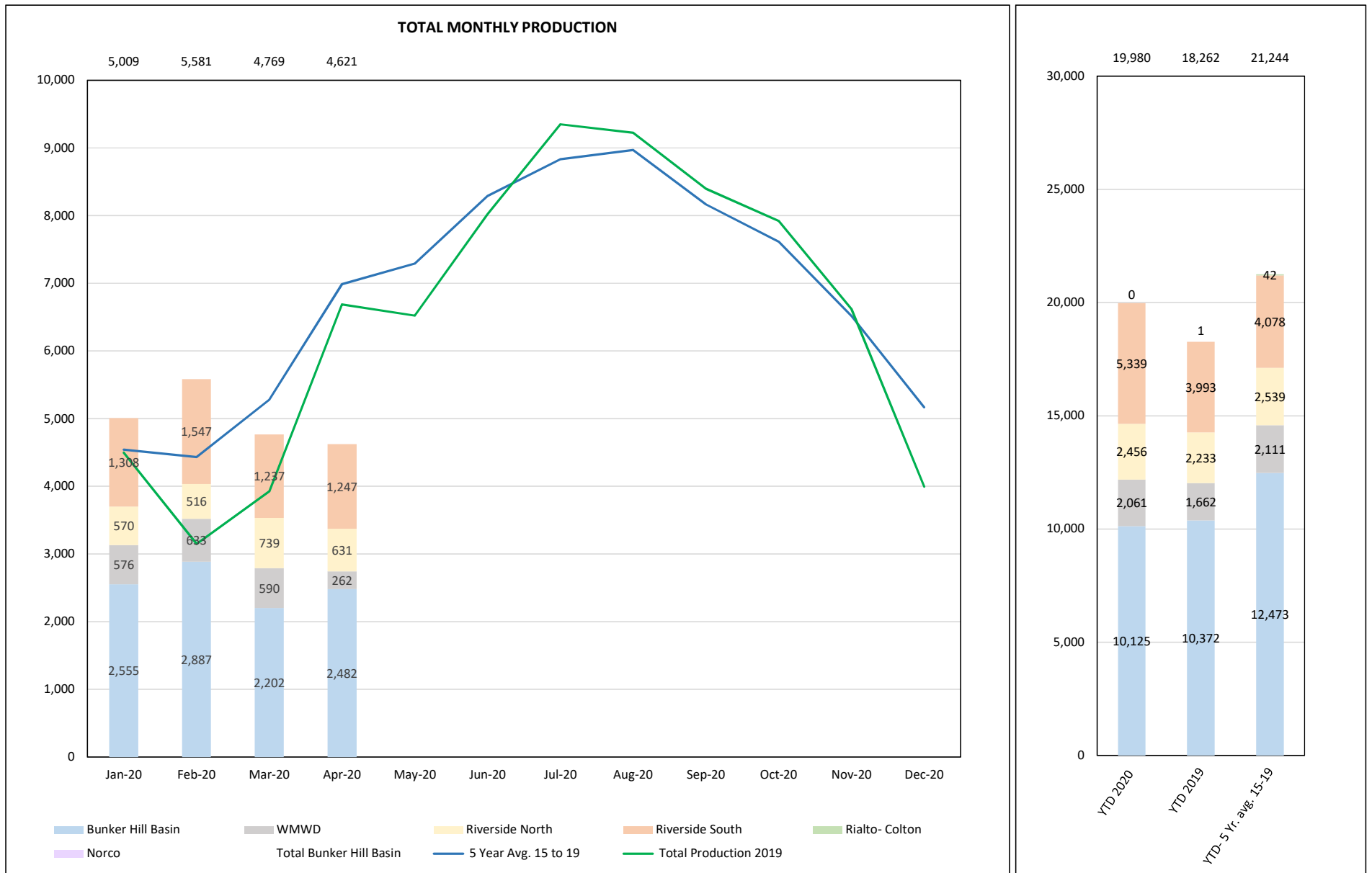
### Basin Groundwater Levels

Groundwater levels in the Bunker Hill, Rialto-Colton, and Riverside North basins are continuing to show a long-term declining trend, while groundwater levels in the Riverside South Basin remain relatively stable as shown in Figure 6. Water levels increased by 10 feet in the Bunker Hill Basin and by 1 foot in the Rialto-Colton Basin as compared to April of last year. Water levels increased by 10 feet in the Riverside North Basin and remained unchanged in the Riverside South Basin as compared to April of last year.

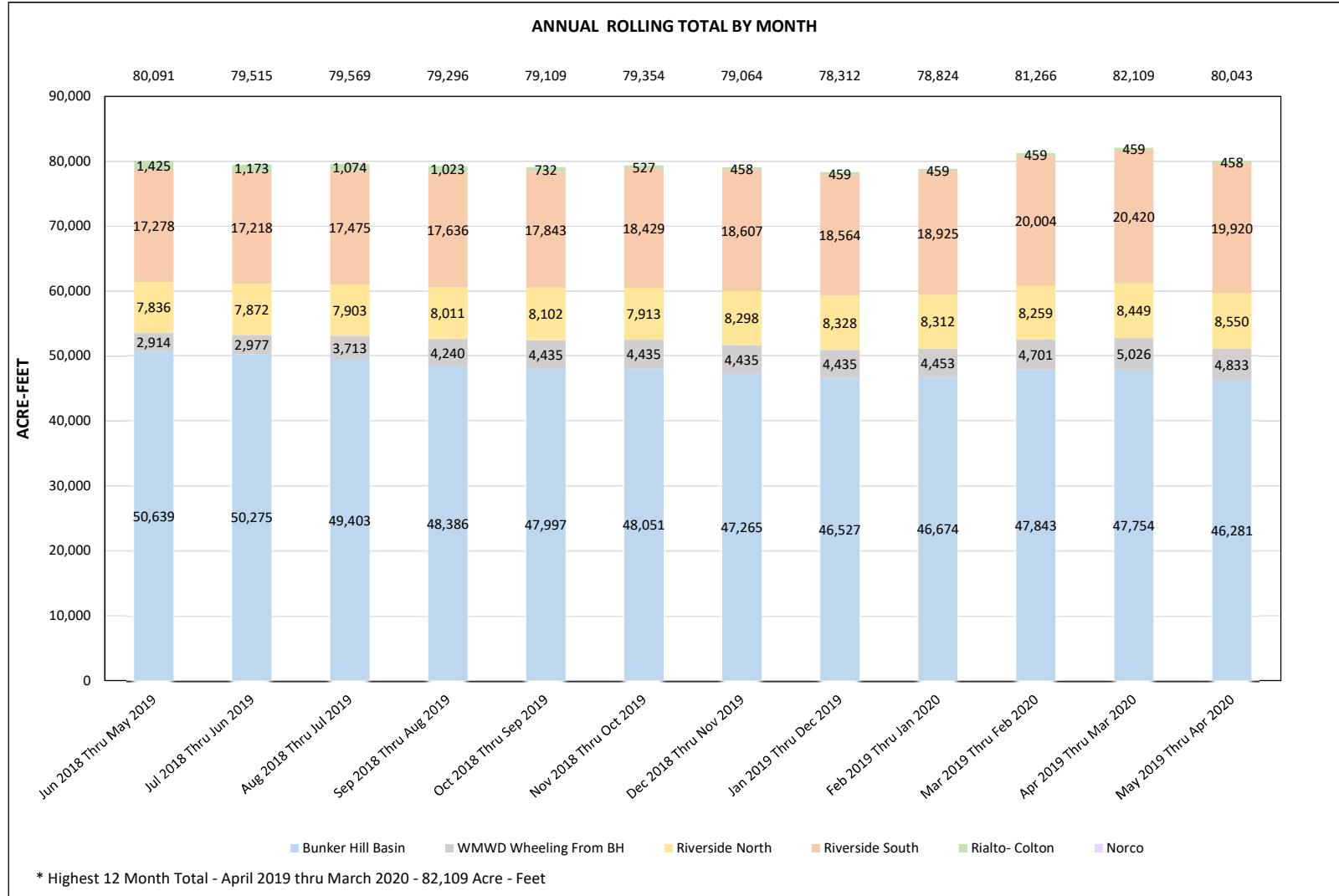
# FIGURE 1: RPU WATER - TOTAL PRODUCTION REPORT - FISCAL YEAR 2019 - 2020



**FIGURE 2: RPU WATER - TOTAL PRODUCTION REPORT - CALENDAR YEAR 2020**



### FIGURE 3: RPU WATER - TOTAL PRODUCTION REPORT



**FIGURE 4: RPU WATER - TOTAL MONTHLY CONSUMPTION REPORT**

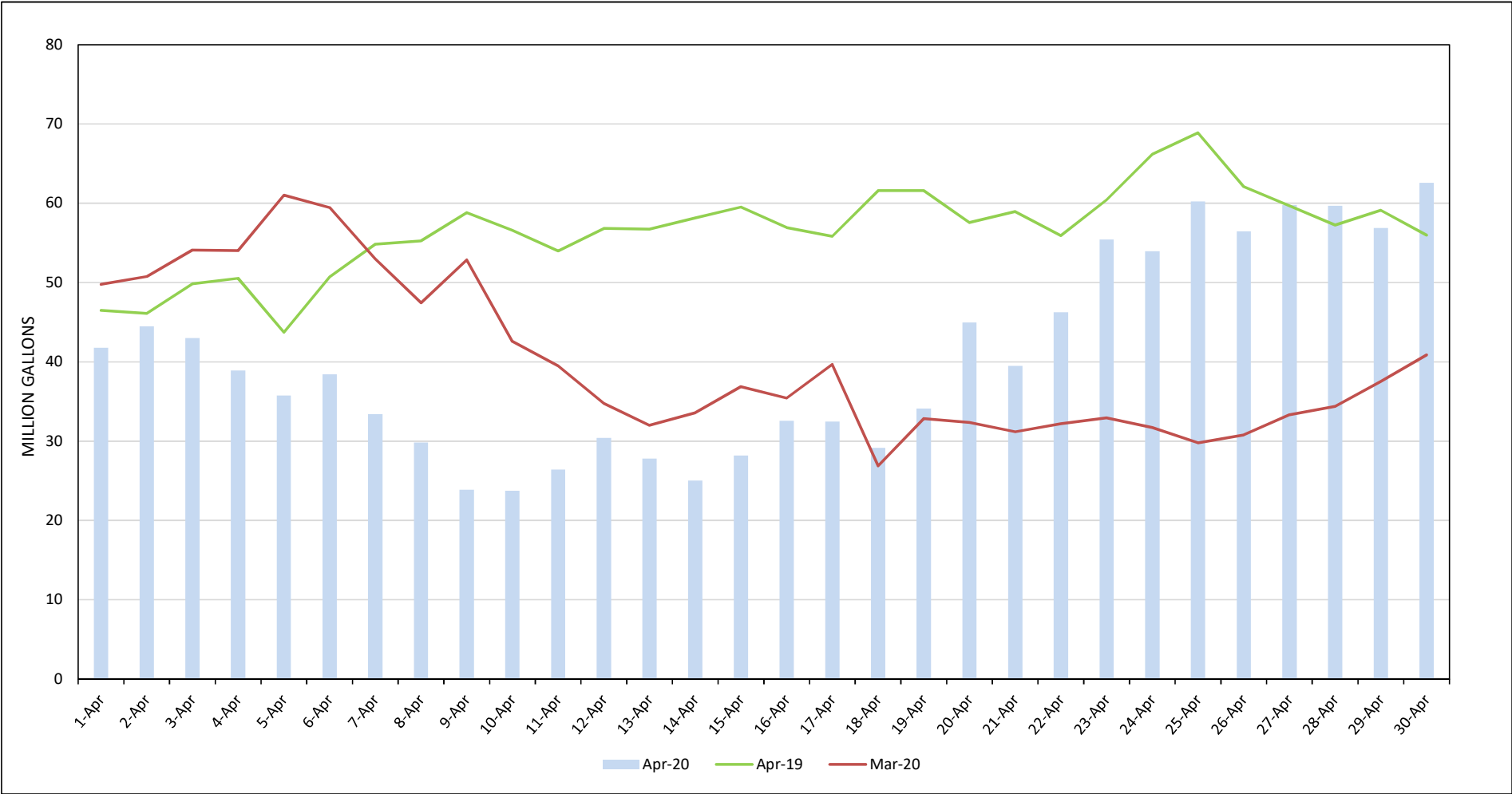
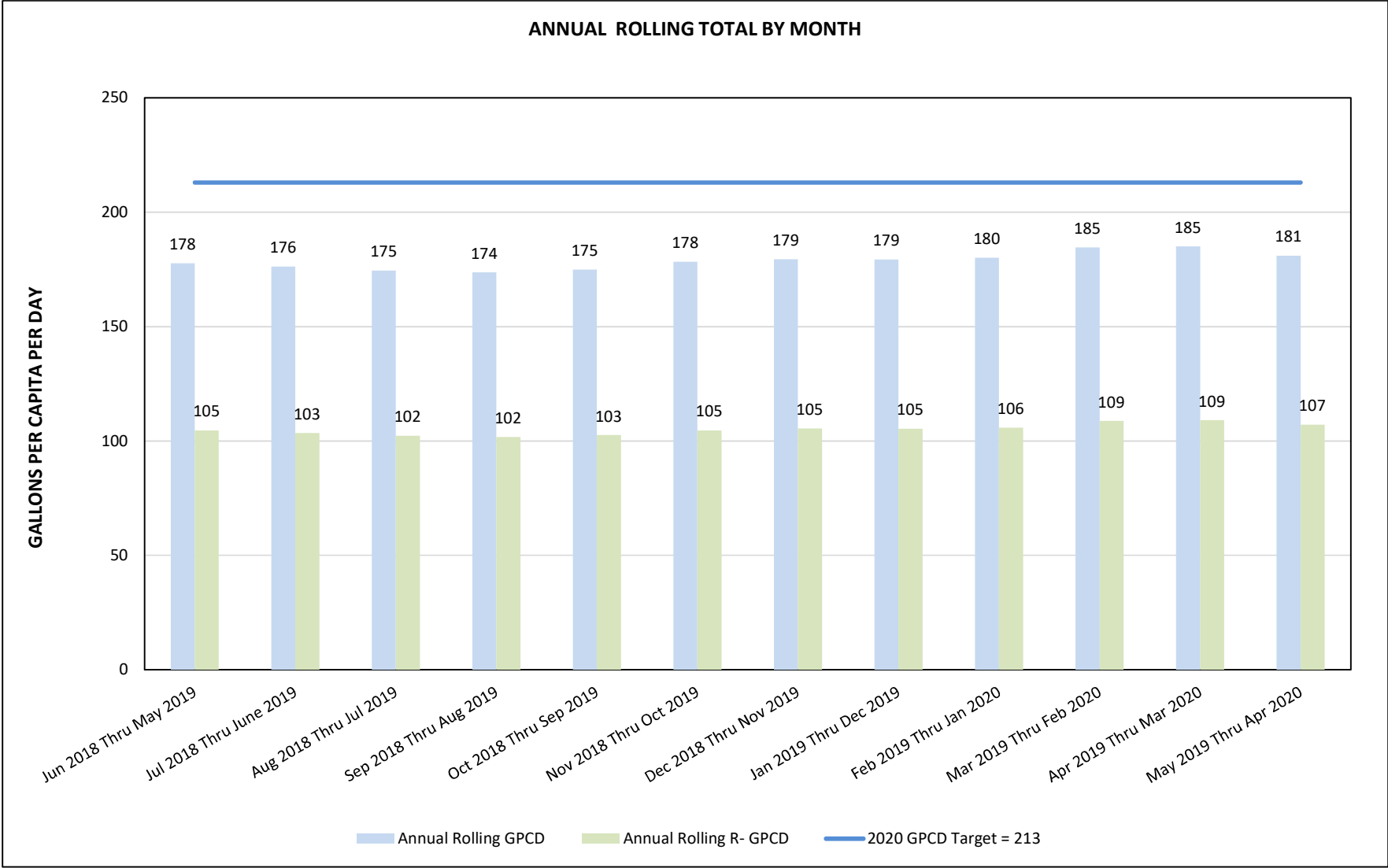
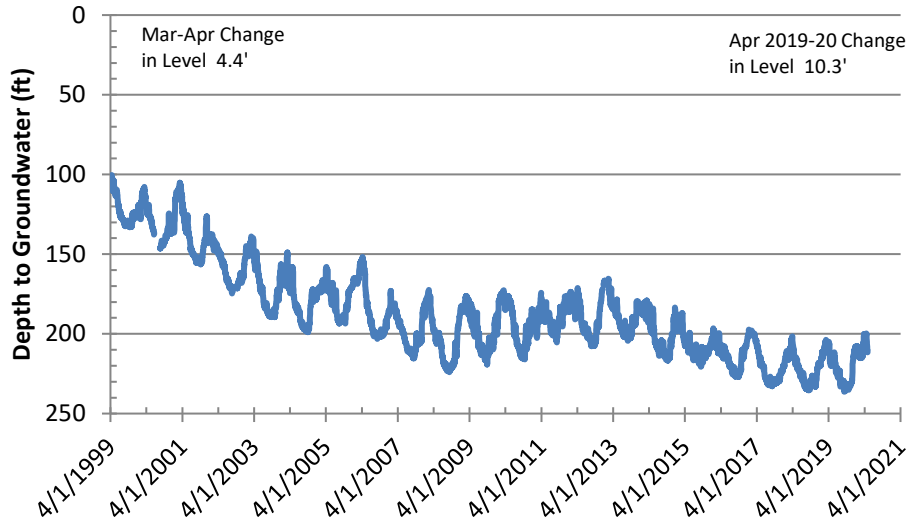


FIGURE 5: RPU WATER - TOTAL GPCD AND R-GPCD ANNUAL ROLLING

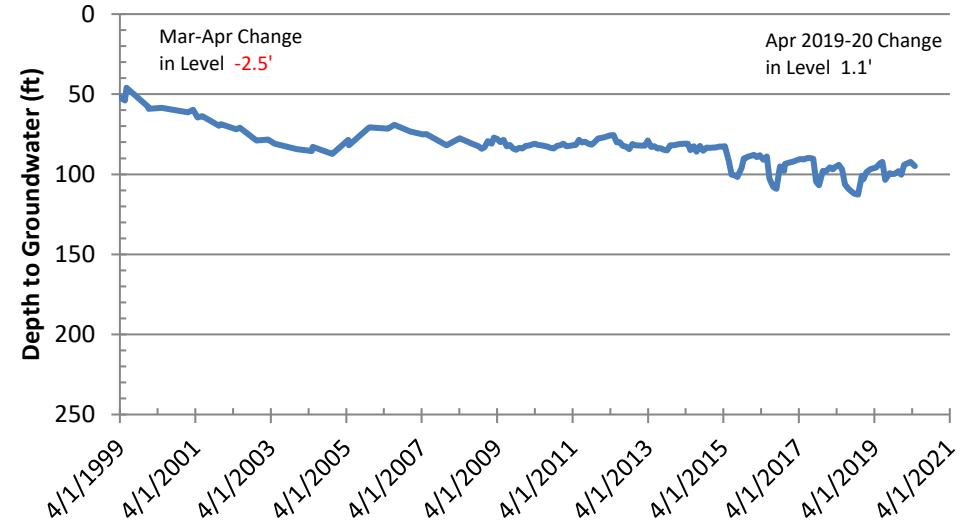


# Figure 6: Basin Groundwater Levels

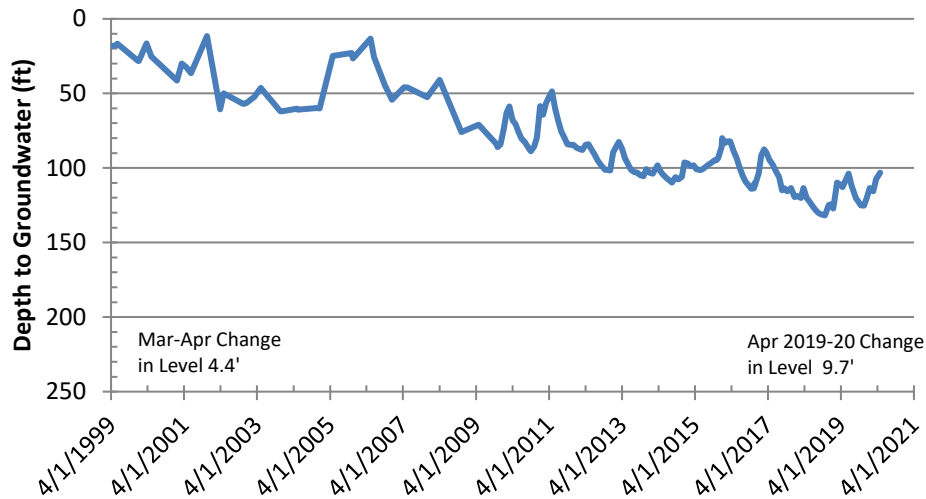
## Bunker Hill Basin Sierra High School (USGS)



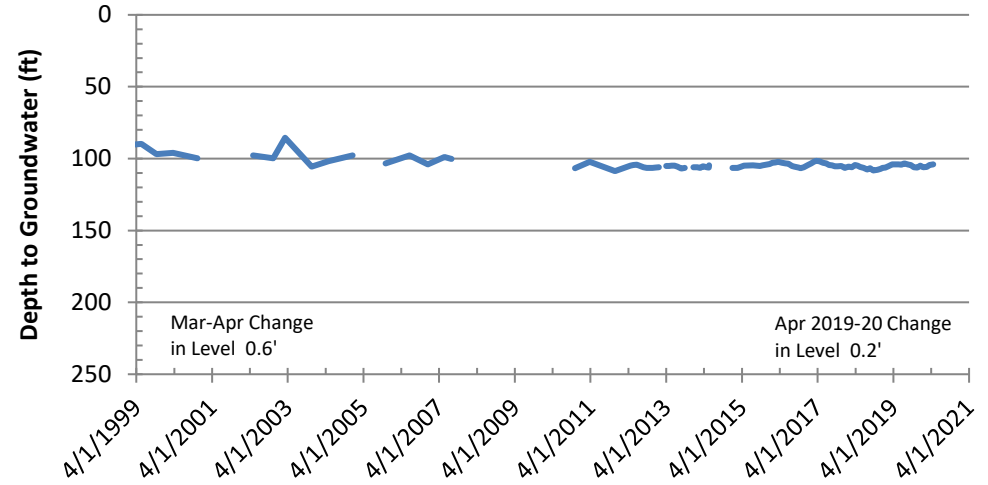
## Rialto-Colton Basin Johnson 1



## Riverside North Basin Flume 5



## Riverside South Basin Cunningham





# Figure 7: Groundwater Basin Vicinity Map

