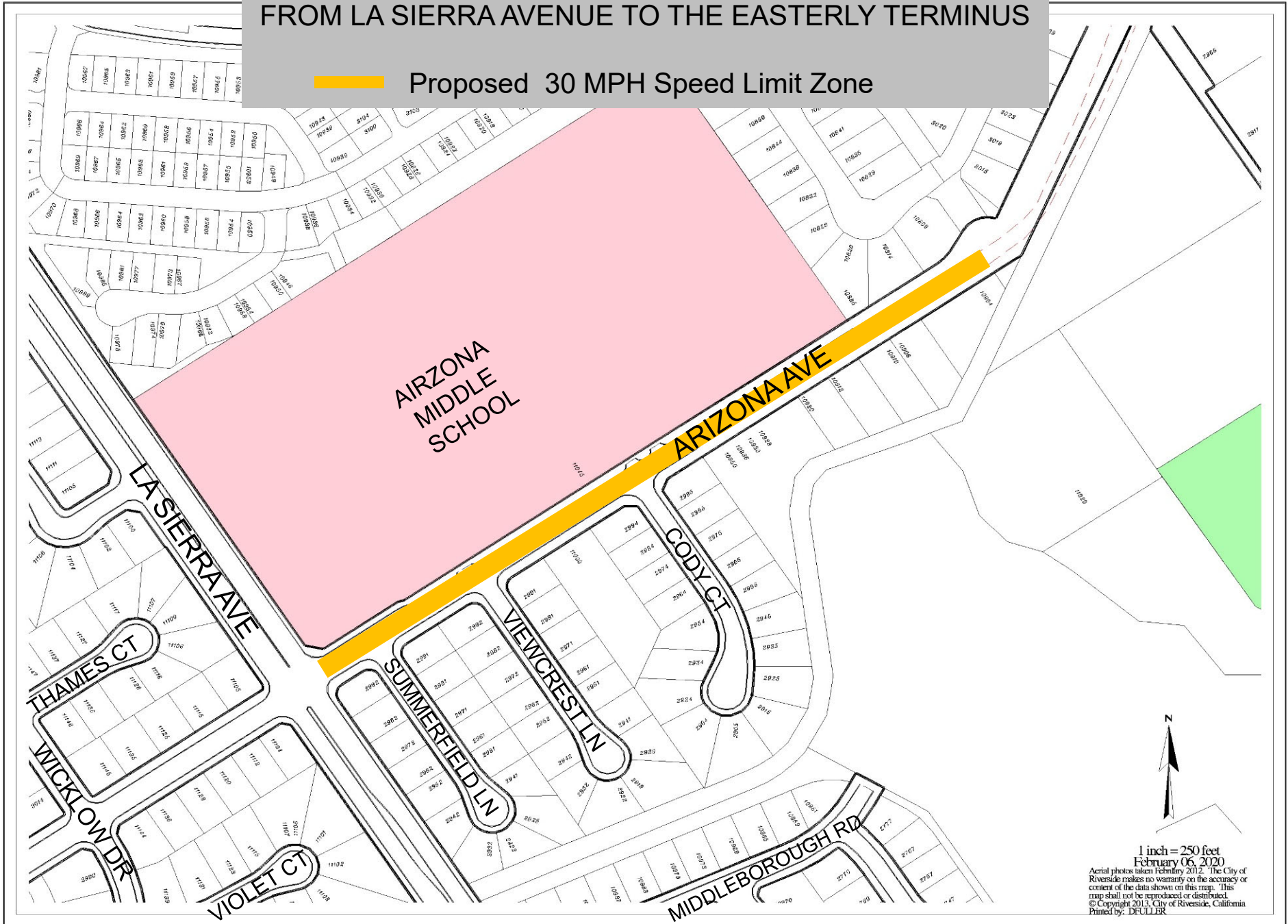


ARIZONA AVENUE FROM LA SIERRA AVENUE TO THE EASTERLY TERMINUS

 Proposed 30 MPH Speed Limit Zone



1 inch = 250 feet
February 06, 2020
Aerial photos taken February 2012. The City of
Riverside makes no warranty on the accuracy or
content of the data shown on this map. This
map shall not be reproduced or distributed.
© Copyright 2013, City of Riverside, California
Printed by: DEULLER