



RIVERSIDE PUBLIC UTILITIES

Board Memorandum

BOARD OF PUBLIC UTILITIES

DATE: JULY 13, 2020

GENERAL MANAGERS REPORT

ITEM NO: 7

SUBJECT: MONTHLY WATER REPORT – MAY 2020

In May, RPU's total water production was 9,137 acre-feet (AF) as shown in Figures 1 and 2. RPU's annual rolling production totals by month are shown in Figure 3. In May, the peak water usage on the potable water distribution system was 80.3 million gallons per day (MGD) and occurred on May 27, 2020, as shown in Figure 4.

RPU's potable water supply, including deliveries to Western Municipal Water District (WMWD), and NORCO totaled 6,949 AF, which increased from last May by 1,468 AF. Under the Cooperative Agreement for Water Production and Conveyance with WMWD, 853 AF was wheeled to WMWD during May as shown in Figures 1 and 2. During this 2019/20 fiscal year, a total of 6,555 AF of potable water has been delivered to WMWD. And Under the Agreement for the Sale of Surplus Potable Water and Emergency Water Norco, RPU started potable water deliveries on May 8th, 2020, and delivered 45 AF in May 2020.

In May, RPU's Gallons Per-Capita per Day (GPCD) was 205, and its Residential Gallons Per-Capita per Day (R-GPCD) was 131. RPU's annual rolling GPCD was 178, which is below the compliance target specified in SB X7-7 (i.e. 20% reduction by 2020) of 213. RPU's annual rolling R-GPCD was 106 as shown in Figure 5.

Weather conditions within the City of Riverside showed that May of 2020 was warmer by 11 degrees from May of last year and experienced a decrease of 0.94 inches of rainfall compared to May 2019.

There were no significant events for the water system in May 2020.

Basin Groundwater Levels

Groundwater levels in the Bunker Hill, Rialto-Colton, and Riverside North basins are continuing to show a long-term declining trend, while groundwater levels in the Riverside South Basin remain relatively stable as shown in Figure 6. Water levels increased by 10 feet in the Bunker Hill Basin and by 1 foot in the Rialto-Colton Basin as compared to May of last year. Water levels increased by 10 feet in the Riverside North Basin and remained unchanged in the Riverside South Basin as compared to May of last year.

Figure 1: Total Production Report Fiscal Year 2019 – 2020

Figure 2: Total Production Report – Calendar Year 2020

Figure 3: Total Production Report

Figure 4: Total Monthly Consumption Report

Figure 5: Total GPCD and R-GPCD Annual Rolling

Figure 6: Basin Groundwater Levels

Figure 7: Groundwater Basin Vicinity Map

FIGURE 1: RPU WATER - TOTAL PRODUCTION REPORT - FISCAL YEAR 2019 - 2020

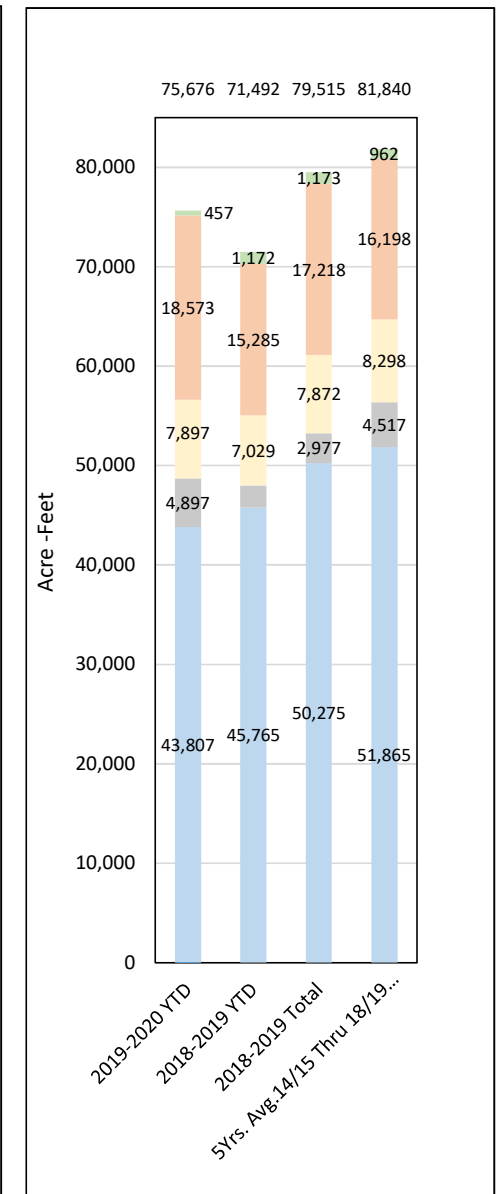
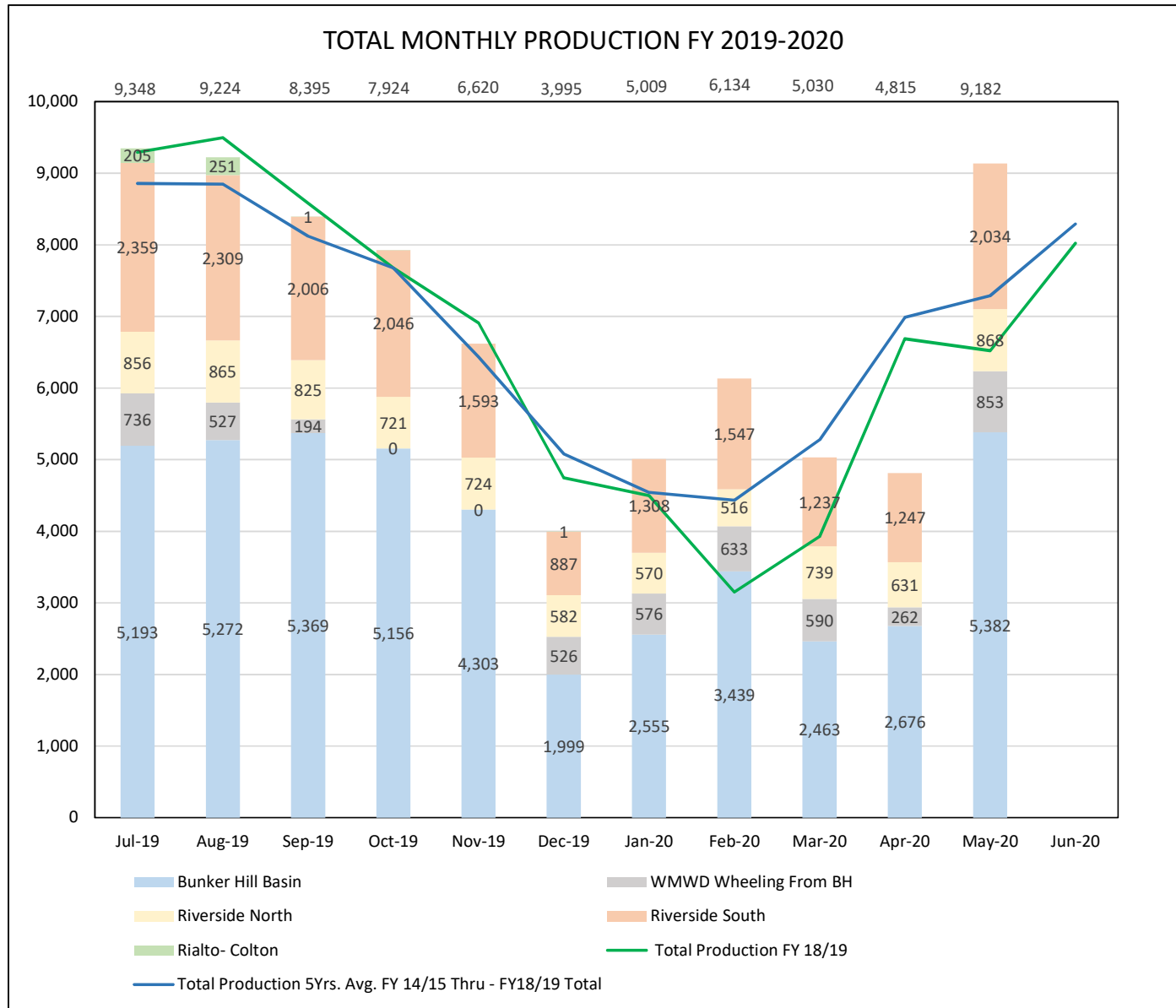


FIGURE 2: RPU WATER - TOTAL PRODUCTION REPORT - CALENDAR YEAR 2020

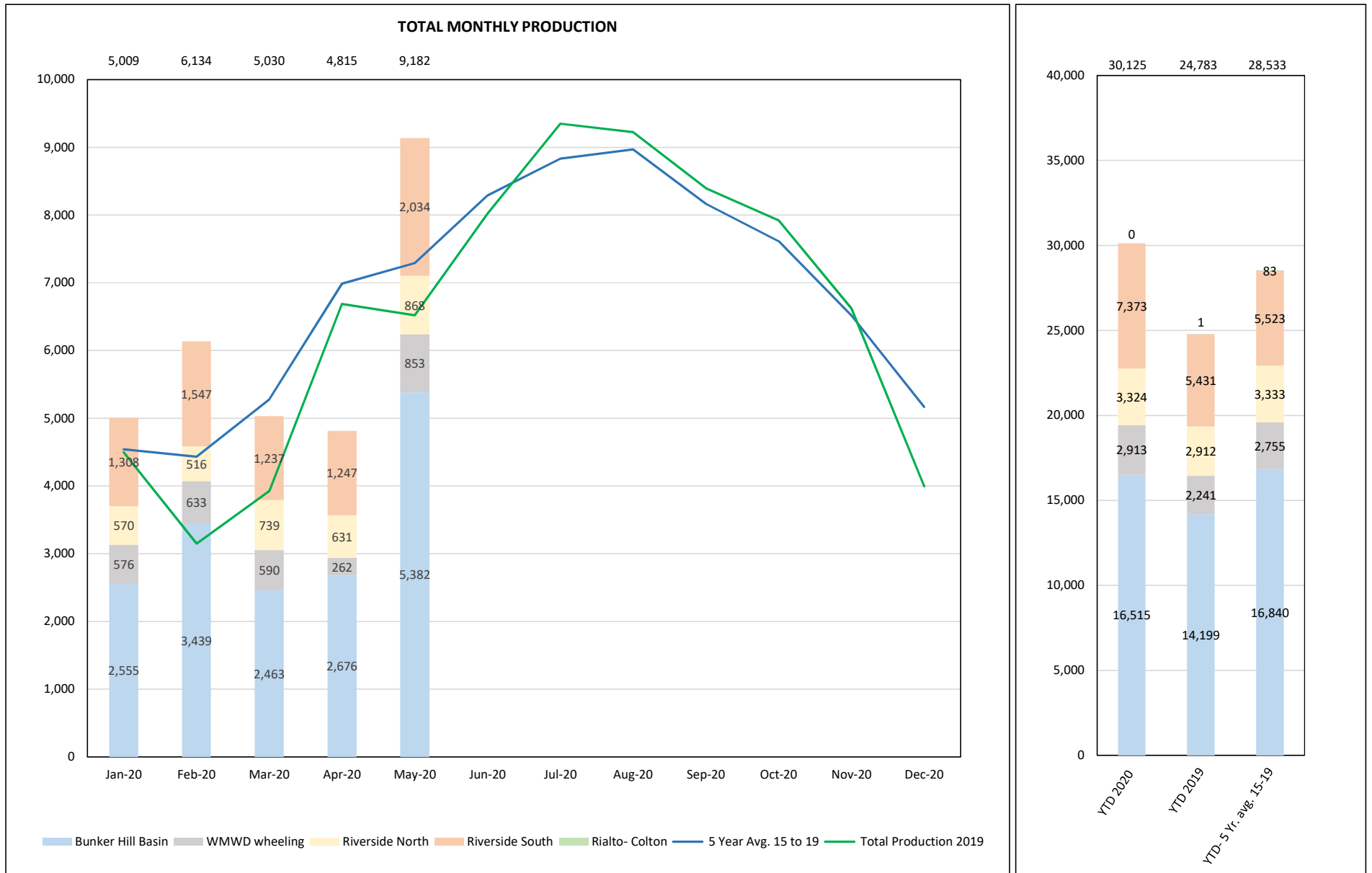


FIGURE 3: RPU WATER - TOTAL PRODUCTION REPORT

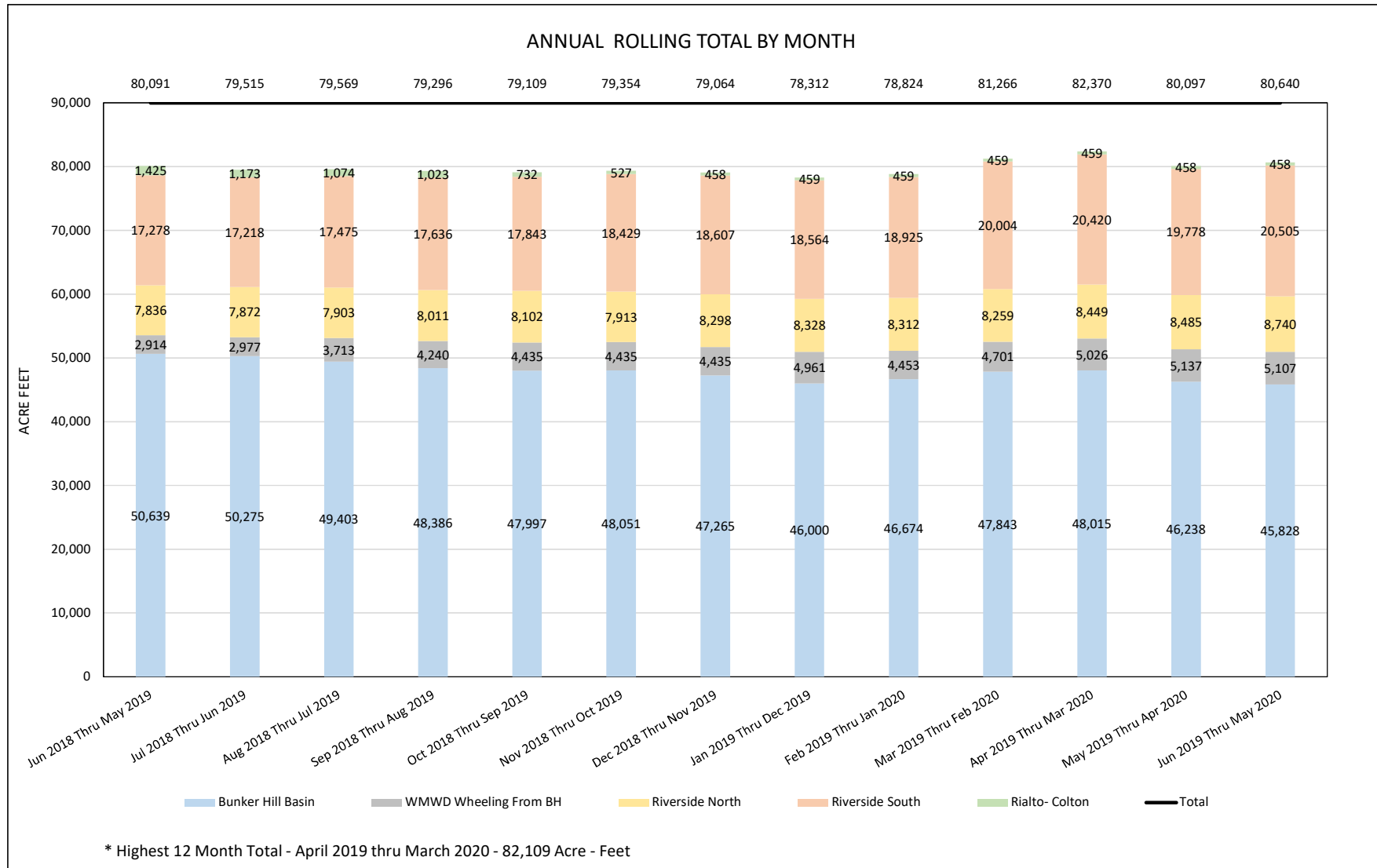


FIGURE 4: RPU WATER - TOTAL MONTHLY CONSUMPTION REPORT

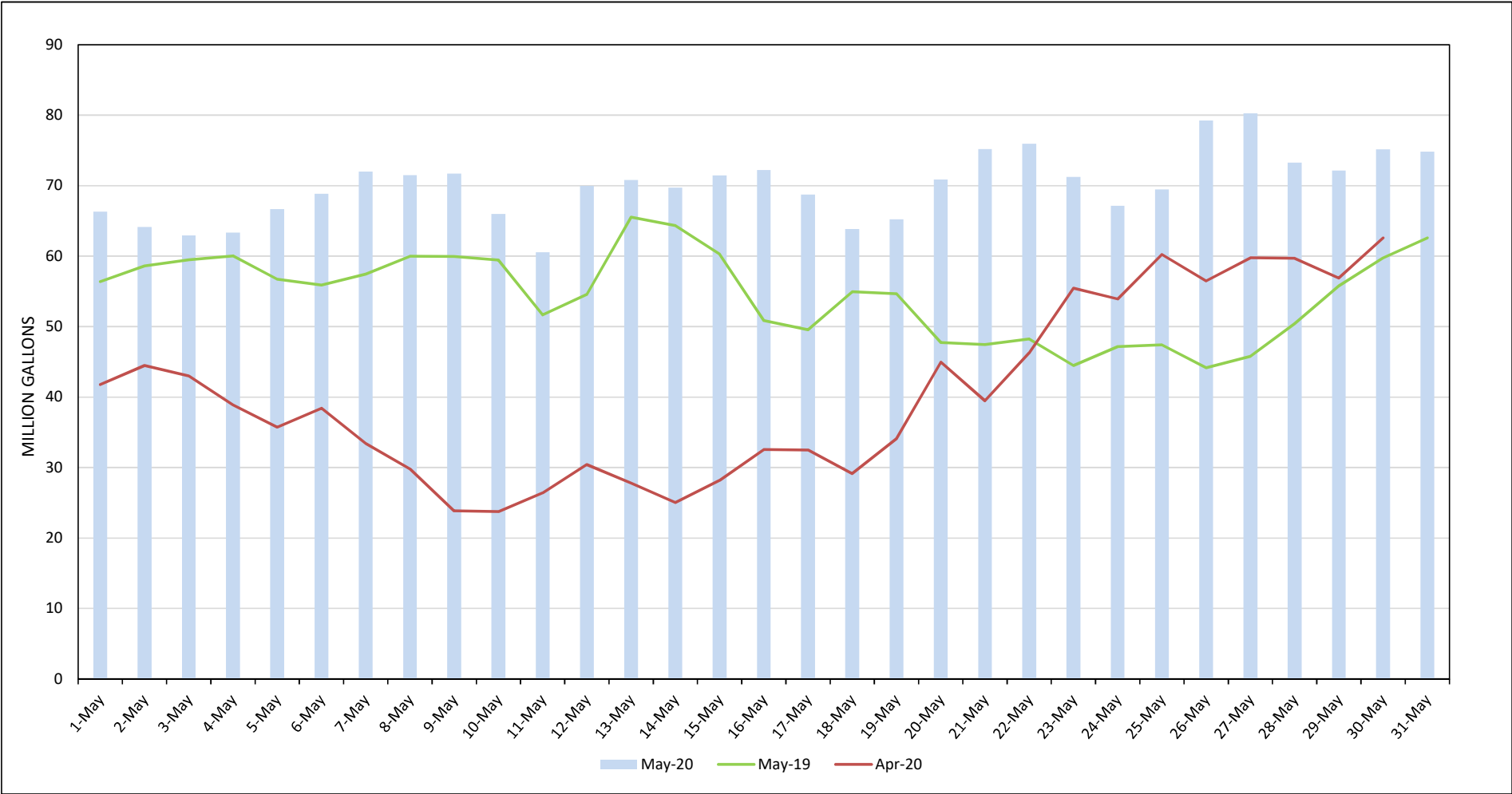


FIGURE 5: RPU WATER - TOTAL GPCD AND R-GPCD ANNUAL ROLLING

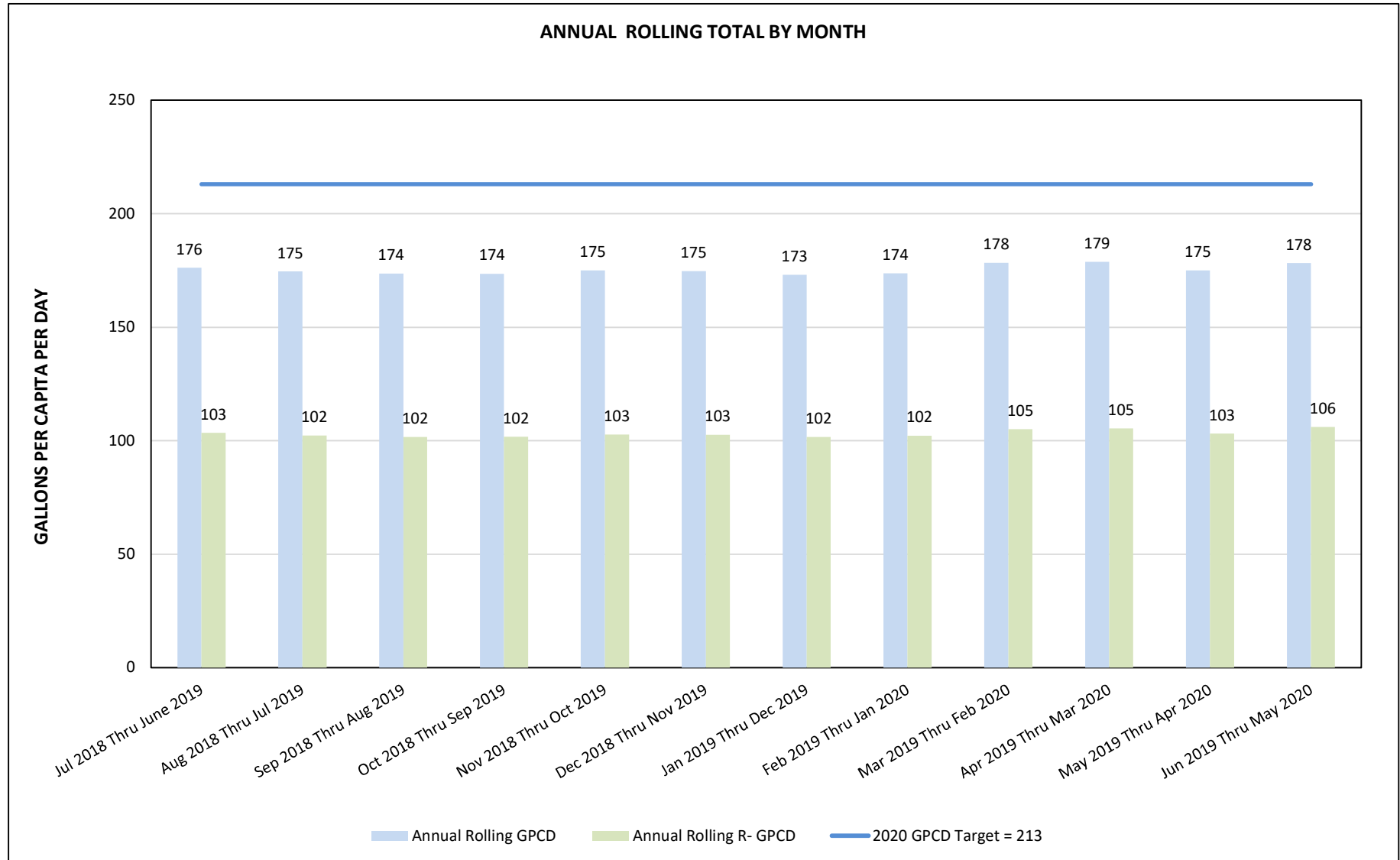
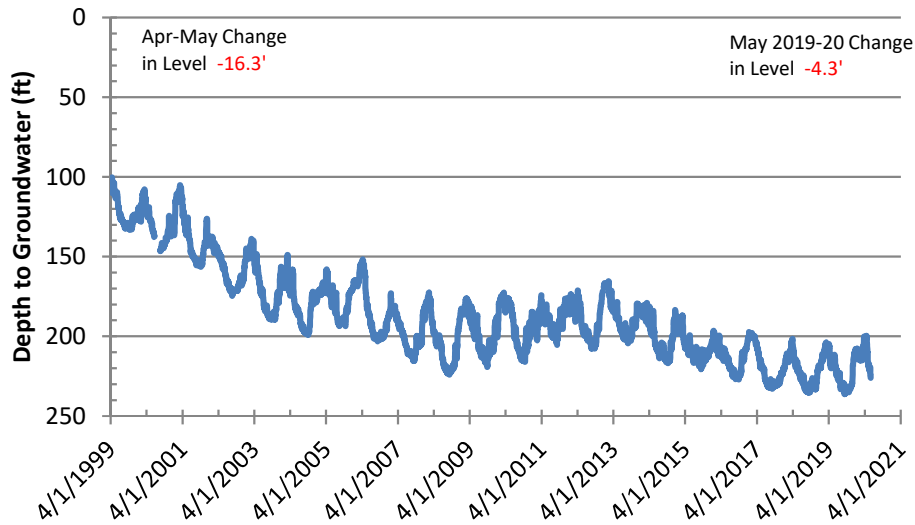
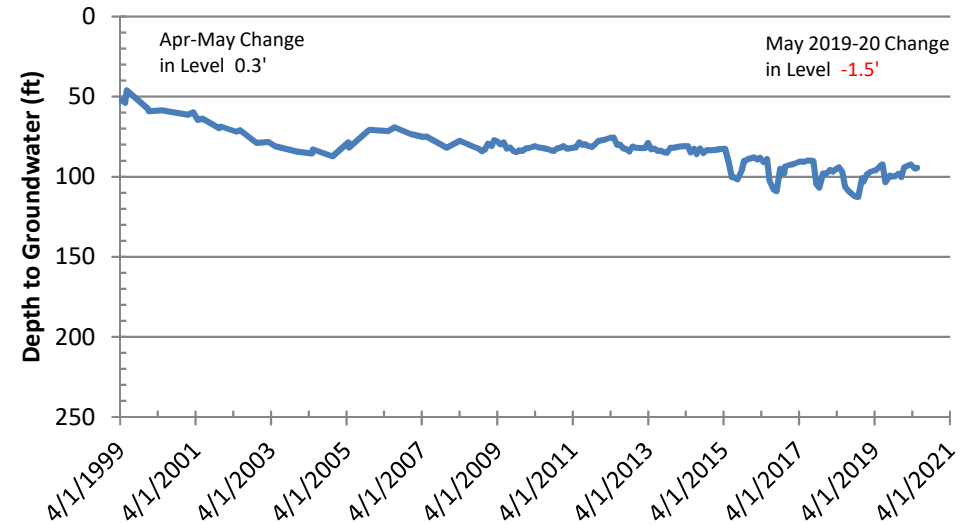


Figure 6: Basin Groundwater Levels

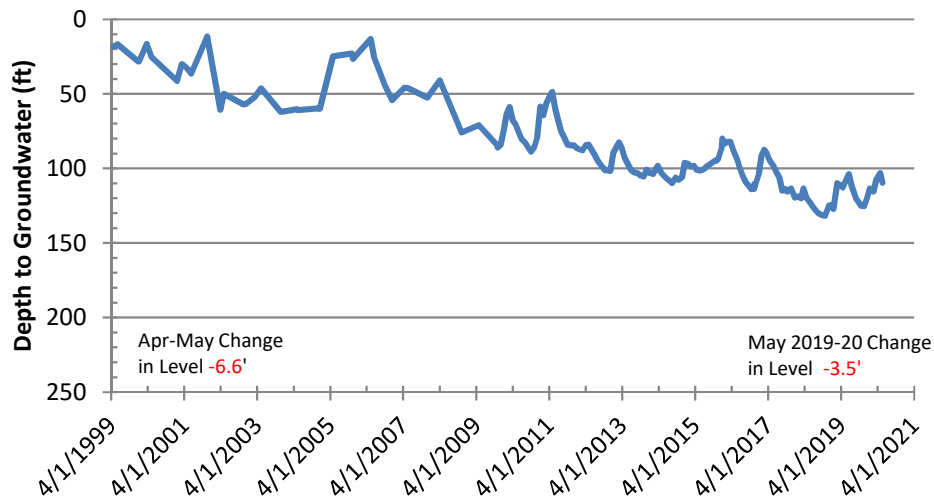
Bunker Hill Basin Sierra High School (USGS)



Rialto-Colton Basin Johnson 1



Riverside North Basin Flume 5



Riverside South Basin Cunningham

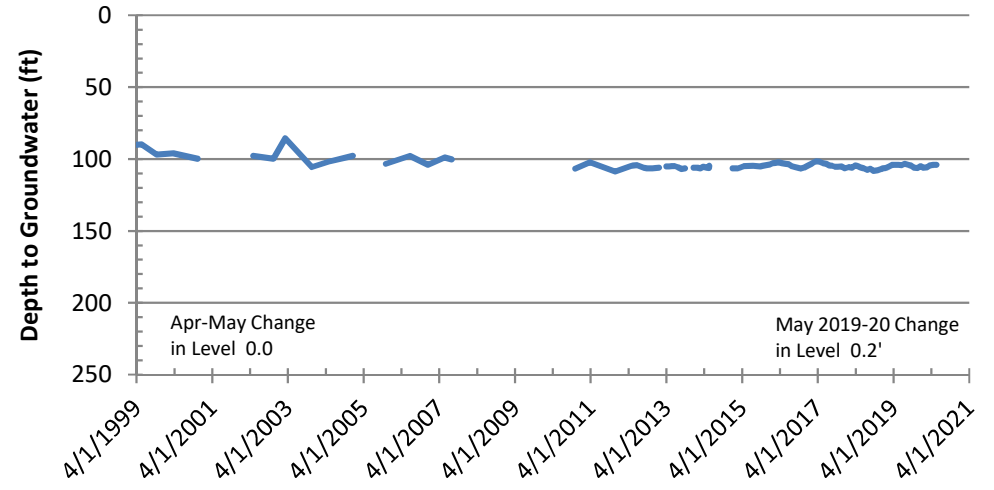


Figure 7: Groundwater Basin Vicinity Map

