



# RIVERSIDE PUBLIC UTILITIES

## Board Memorandum

**BOARD OF PUBLIC UTILITIES**

**DATE:** October 26, 2020

**GENERAL MANAGER'S REPORT**

**ITEM NO:** 16

**SUBJECT: MONTHLY WATER REPORT – September 2020**

In September, RPU's total water production was 8,974 acre-feet (AF) as shown in Figures 1 and 2. RPU's annual rolling production totals by month are shown in Figure 3. In September, the peak water usage on the potable water distribution system was 87.2 million gallons per day (MGD) and occurred on September 07, 2020 as shown on Figure 4.

RPU's potable water supply, including deliveries to Western Municipal Water District (WMWD), and City of Norco totaled 7,673 AF, which increased from last September by 526 AF. Under the Cooperative Agreement for Water Production and Conveyance with WMWD 619 AF was wholesaled to WMWD during September as shown in Figures 1 and 2. During this 2020/21 fiscal year, a total of 2,069 AF of potable water has been delivered to WMWD. And Under the Agreement for the Sale of Surplus Potable Water and Emergency Water, RPU delivered 88 AF to Norco in September 2020.

In September, RPU's Gallons Per-Capita per Day (GPCD) was 243, and its Residential Gallons Per-Capita per Day (R-GPCD) was 146. RPU's annual rolling GPCD was 183, which is below the compliance target specified in SB X7-7 (i.e. 20% reduction by 2020) of 213. RPU's annual rolling R-GPCD was 110 as shown on Figure 5.

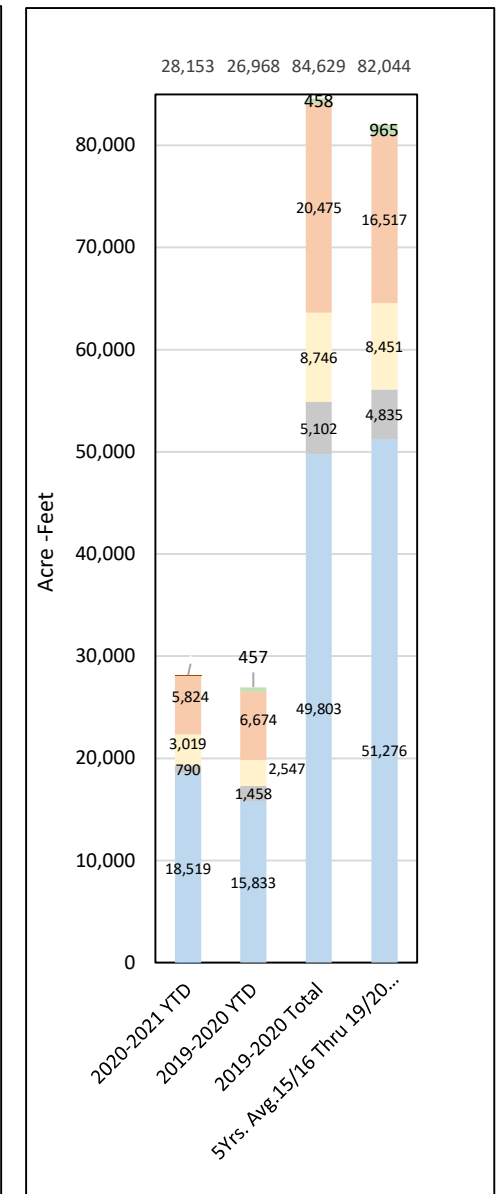
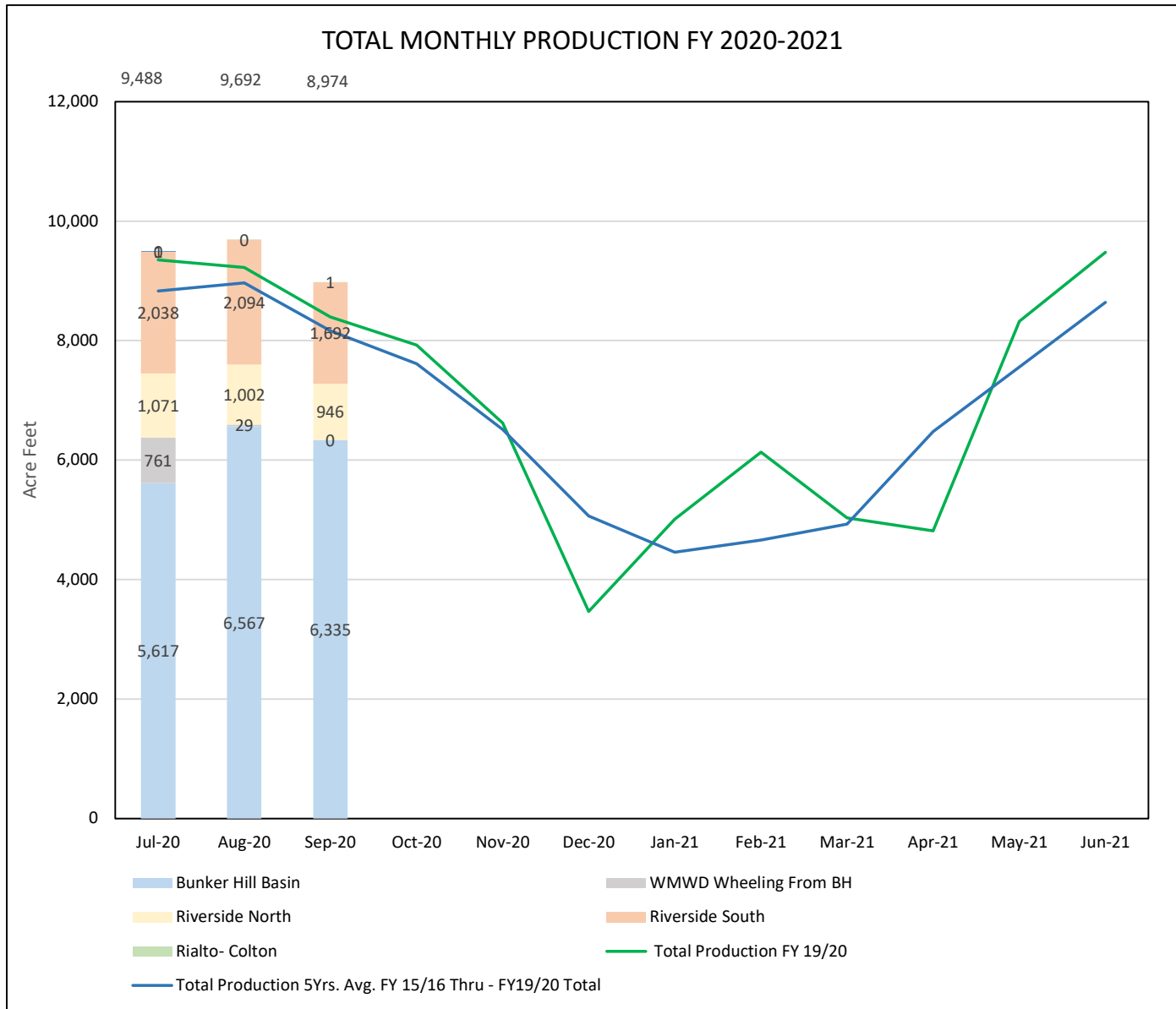
Weather conditions within the City of Riverside showed that September of 2020 was warmer by 5.5 degrees from September of last year and experienced the same of rainfall compared to September 2019.

There were no significant events for the water system in September 2020.

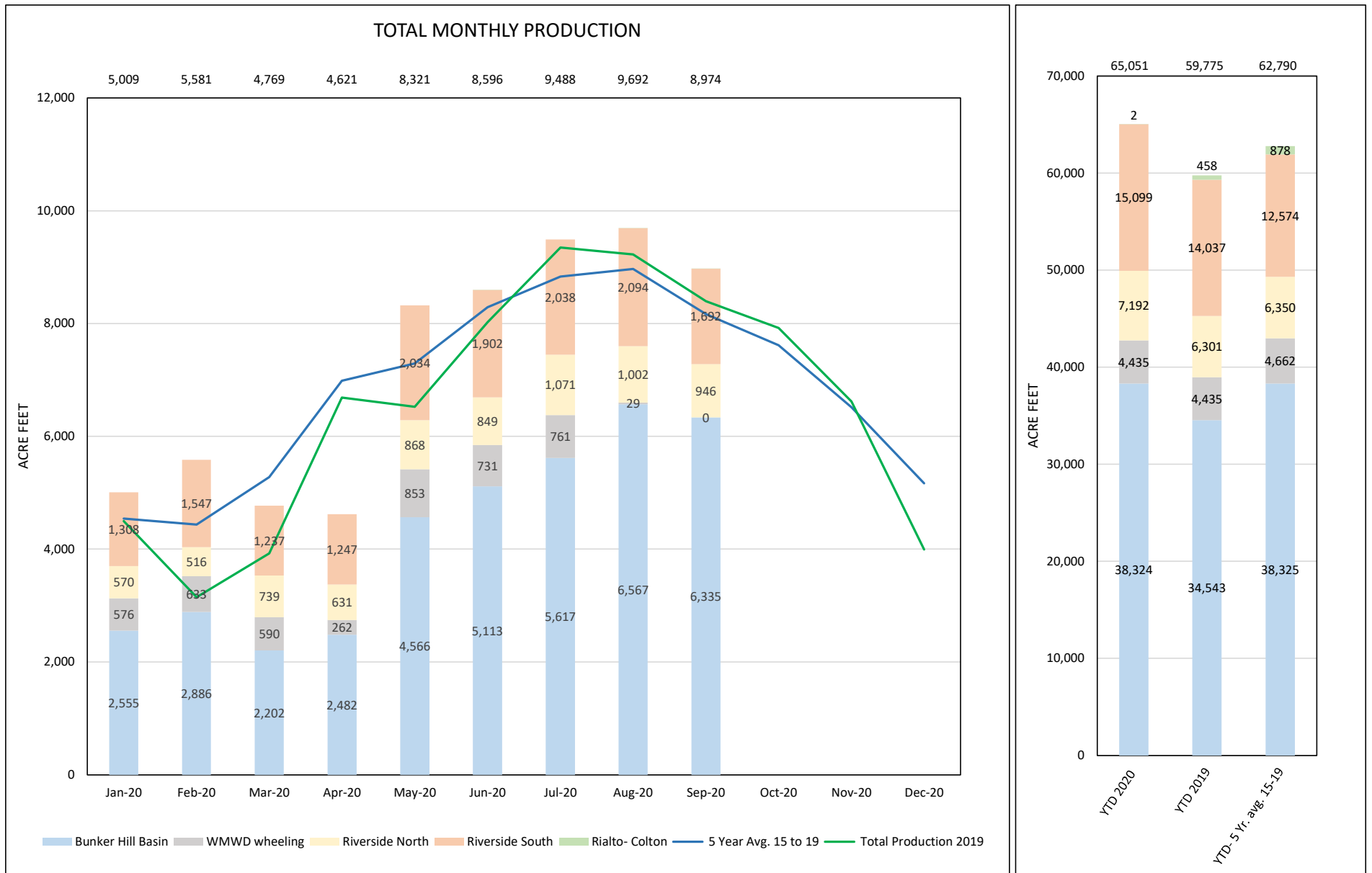
### **Basin Groundwater Levels**

Groundwater levels in the Bunker Hill, Rialto-Colton, and Riverside North basins are continuing to show a long-term declining trend, while groundwater levels in the Riverside South Basin remain relatively stable as shown in Figure 6. Water levels decreased by 7 feet in the Bunker Hill Basin. Water levels in the Rialto-Colton Basin increased by 5 feet as compared to September of last year. This level increase may be due to decreased pumping activities in the local area near the key monitoring well. Water levels decreased by 3 feet in the Riverside North Basin, while the levels in the Riverside South Basin did not change as compared to of last year.

# FIGURE 1: RPU WATER - TOTAL PRODUCTION REPORT - FISCAL YEAR 2020 - 2021



**FIGURE 2: RPU WATER - TOTAL PRODUCTION REPORT - CALENDAR YEAR 2020**



**FIGURE 3: RPU WATER - TOTAL PRODUCTION REPORT**

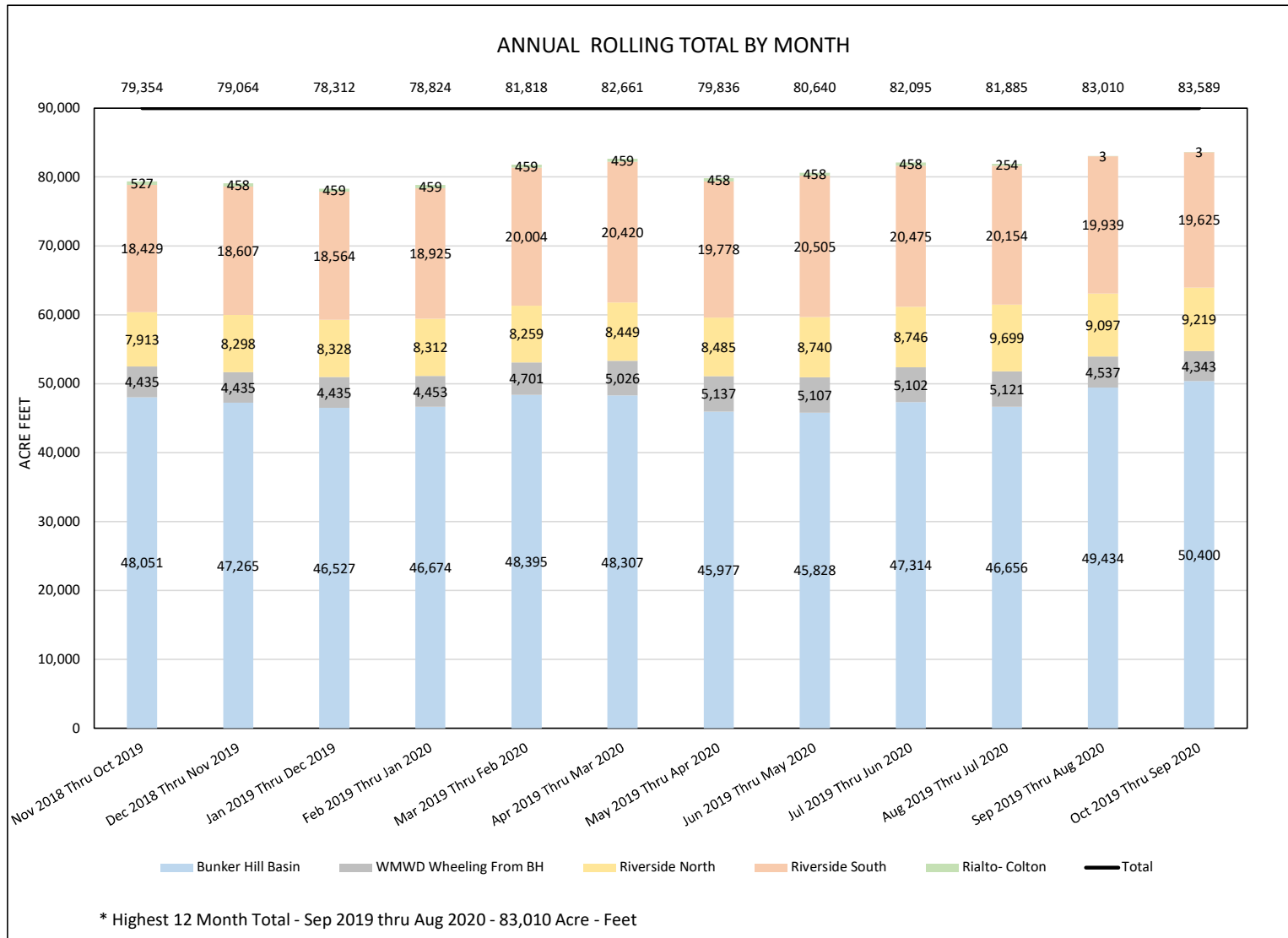
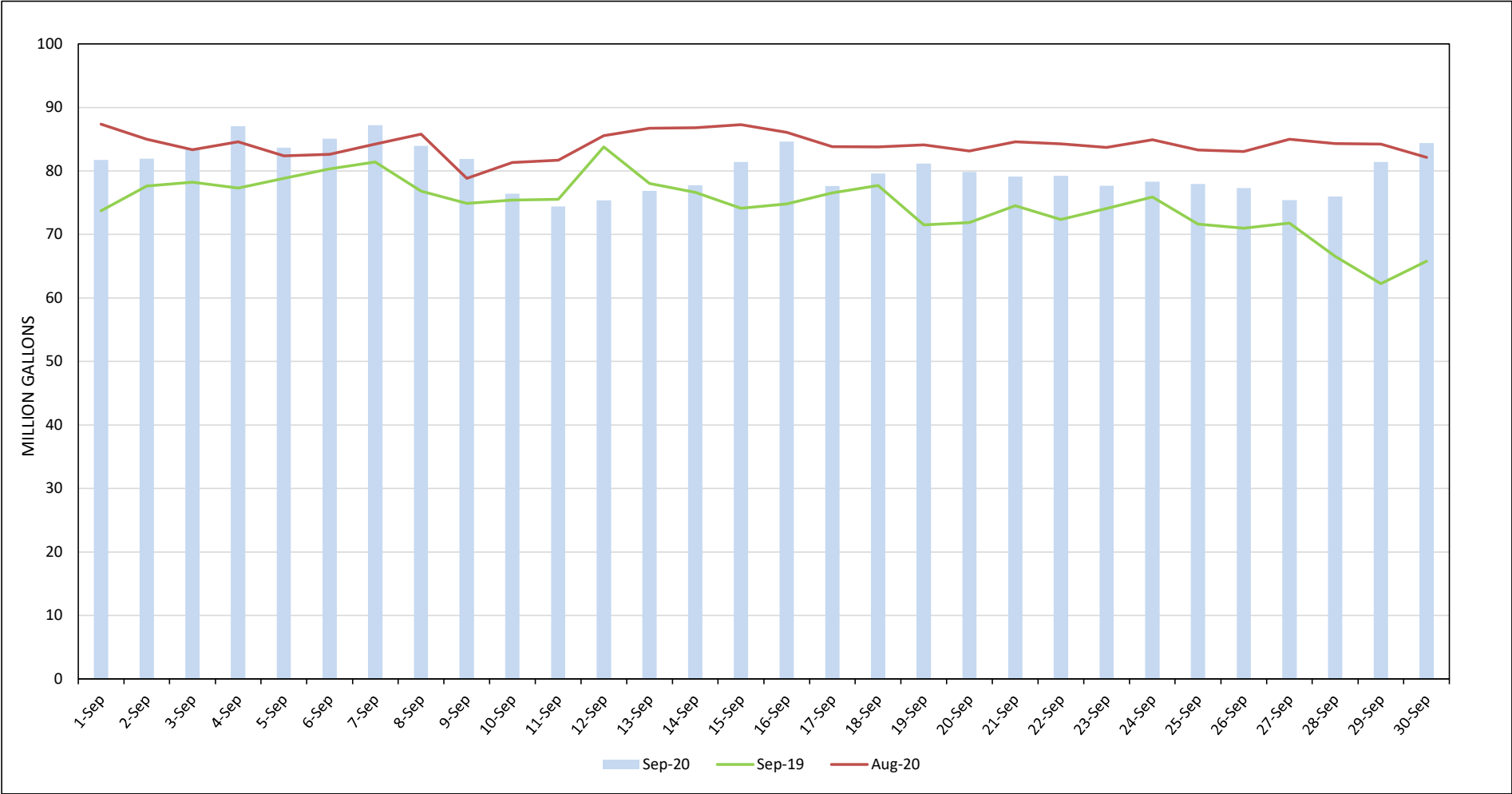
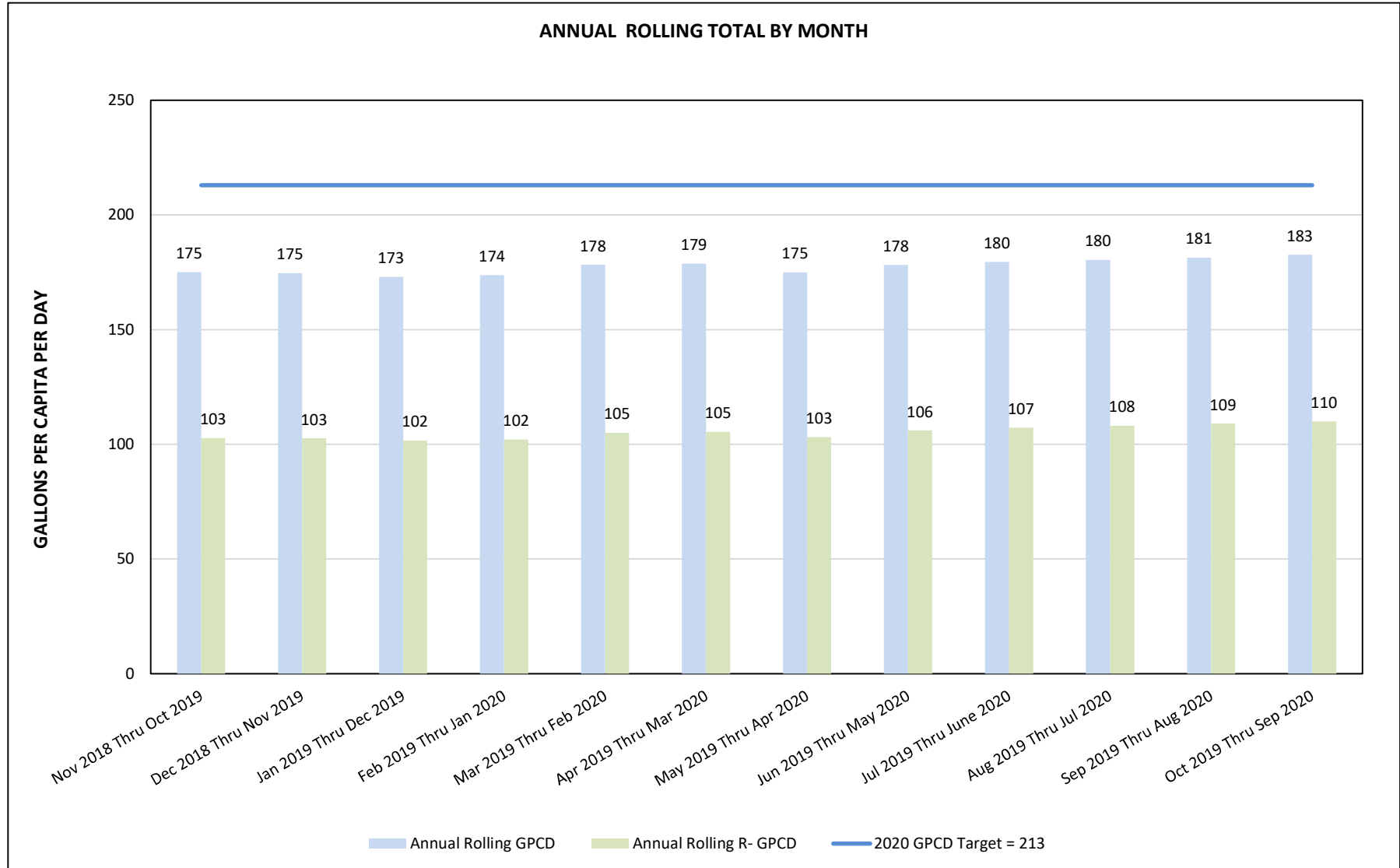


FIGURE 4: RPU WATER - TOTAL MONTHLY CONSUMPTION REPORT

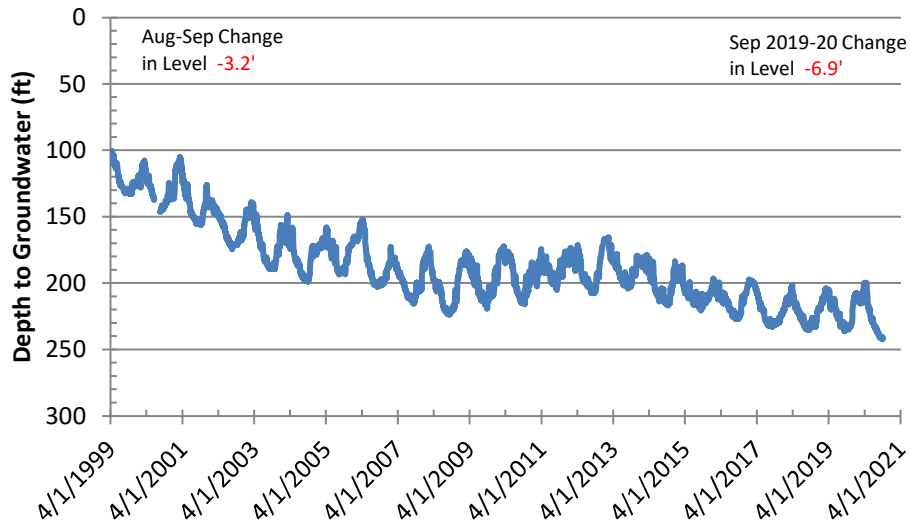


# FIGURE 5: RPU WATER - TOTAL GPCD AND R-GPCD ANNUAL ROLLING

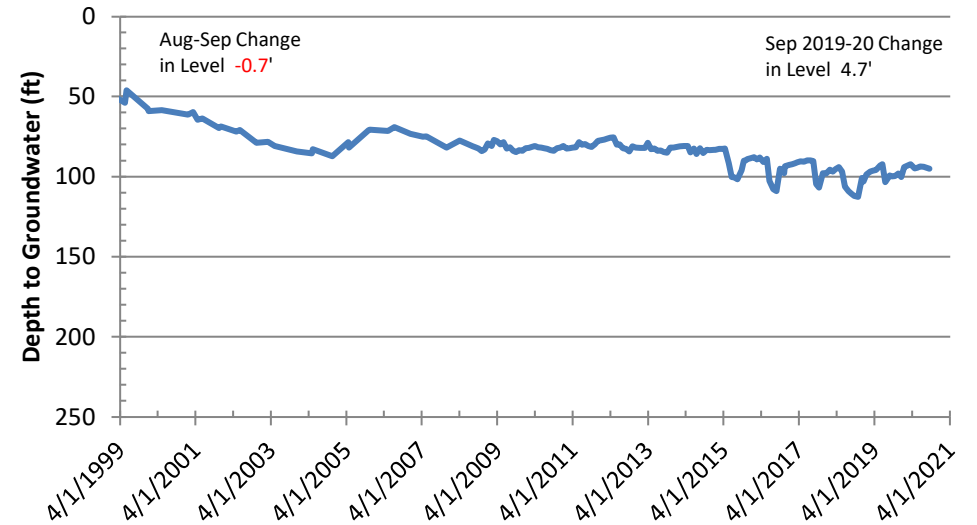


# Figure 6: Basin Groundwater Levels

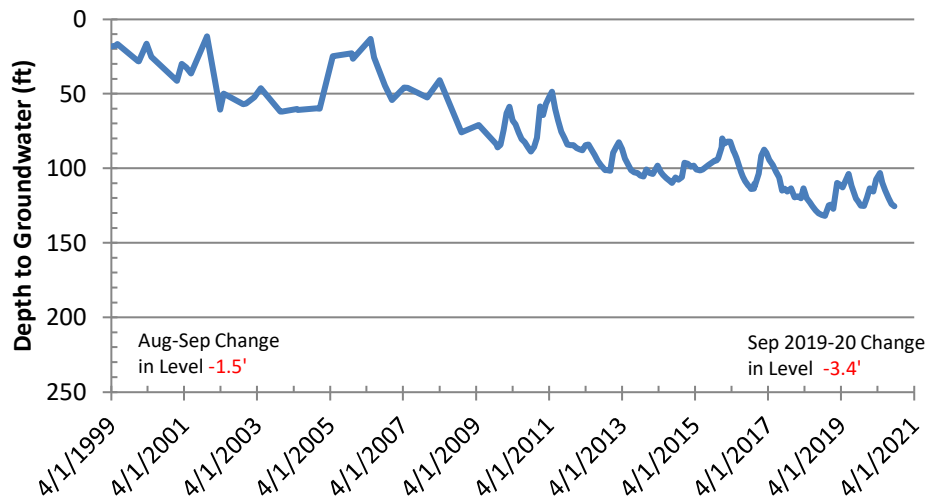
## Bunker Hill Basin Sierra High School (USGS)



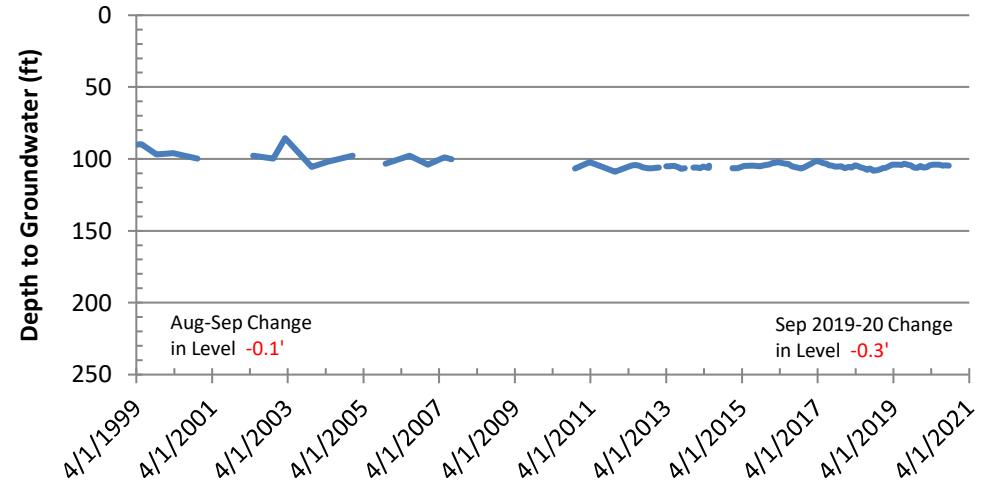
## Rialto-Colton Basin Johnson 1



## Riverside North Basin Flume 5



## Riverside South Basin Cunningham





# Figure 7: Groundwater Basin Vicinity Map

