

# **CONDITION ASSESSMENT AND SEISMIC EVALUATION OF THE EMTMAN, UNIVERSITY HEIGHTS AND ROSS WATER STORAGE RESERVOIRS – NOT TO EXCEED \$225,000**

---

**Riverside Public Utilities**

Board of Public Utilities  
October 26, 2020

# BACKGROUND

1. RPU owns and operates 16 potable water reservoirs
  - a. 108.5-million-gallon combined capacity
2. Varying sizes, ages and construction types
3. Periodically assess the condition of these reservoirs

# BACKGROUND (CONT.)

4. Two reservoirs were assessed in FY2019/20:

a. Alessandro

b. Sugarloaf

5. Three reservoirs to be assessed in FY2020/21:

<b>Reservoir Name</b>	<b>Capacity (Million Gallons)</b>	<b>Year of Construction</b>
Emtman	5.0	1970
University Heights	5.0	1936
Ross	2.0	1977





# PROJECT DESCRIPTION

1. Drain each reservoir

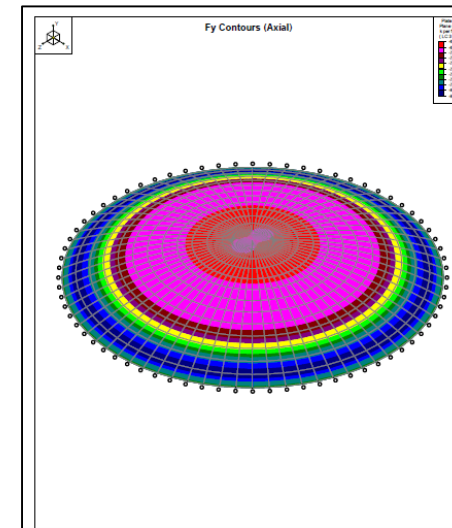
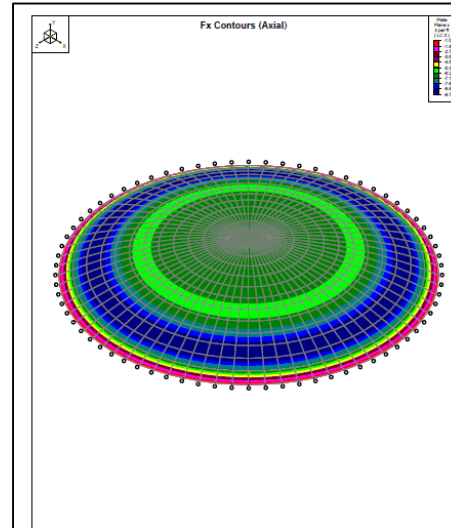


2. Perform an inspection of the interior and exterior



# PROJECT DESCRIPTION (CONT.)

3. Conduct a seismic evaluation



4. Pressure wash the interior walls and ceilings



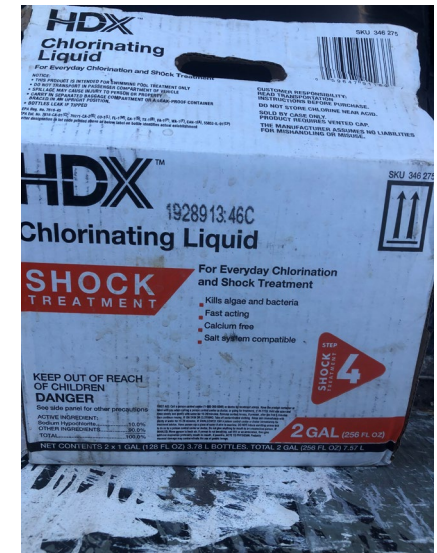


# PROJECT DESCRIPTION (CONT.)

5. Sanitize the reservoirs before returning them to service



6. All other incidental work



# DISCUSSION

1. Staff is in the process of hiring a consultant from RPU/Water's consultant panel
2. Staff is in the process of hiring a contractor to pressure wash and sanitize the reservoirs
3. Minimize system disruptions:
  - a. The work is scheduled in the winter when demands are low
  - b. Reservoirs will be drained in sequence



# PROJECT BREAKDOWN

Project and Fiscal Breakdown		Emtman	University Heights	Ross	Total Project
Work Type:	Performed By:	Amount:	Amount:	Amount:	Amount:
Project Management, Field Support and Engineering Support	Internal Staff	\$25,000.00	\$25,000.00	\$25,000.00	\$75,000.00
Condition Assessment and Seismic Evaluation	Vendor to be Determined (Consultant Panel)	\$30,000.00	\$30,000.00	\$30,000.00	\$90,000.00
Pressure Wash and Cleaning	Vendor to be Determined (Informal Procurement)	\$20,000.00	\$20,000.00	\$20,000.00	\$60,000.00
<b>Work Order Total:</b>		<b>\$75,000.00</b>	<b>\$75,000.00</b>	<b>\$75,000.00</b>	<b>\$225,000.00</b>
Reimbursements:	None				
<b>Anticipated Start Date:</b>	<b>December 2020</b>				
<b>Anticipated Duration:</b>	<b>3 Months</b>				



# RECOMMENDATIONS

That the Board of Public Utilities:

1. Approve the capital expenditure for Work Order No. 2102178 in the amount of \$75,000 which includes all costs for the Condition Assessment and Seismic Evaluation of the Emtman Reservoir;
2. Approve the capital expenditure for Work Order No. 2102181 in the amount of \$75,000 which includes all costs for the Condition Assessment and Seismic Evaluation of the University Heights Reservoir;
3. Approve the capital expenditure for Work Order No. 2102182 in the amount of \$75,000 which includes all costs for the Condition Assessment and Seismic Evaluation of the Ross Reservoir; and
4. Authorize the City Manager, or designee, to execute supplemental agreements and any other documents necessary to effectuate the project described herein, as well as, the ability to make minor non-substantive changes including changes to each of the work order amounts but not-to-exceed the cumulative total of \$225,000 and in accordance with all purchasing policies.

