

---

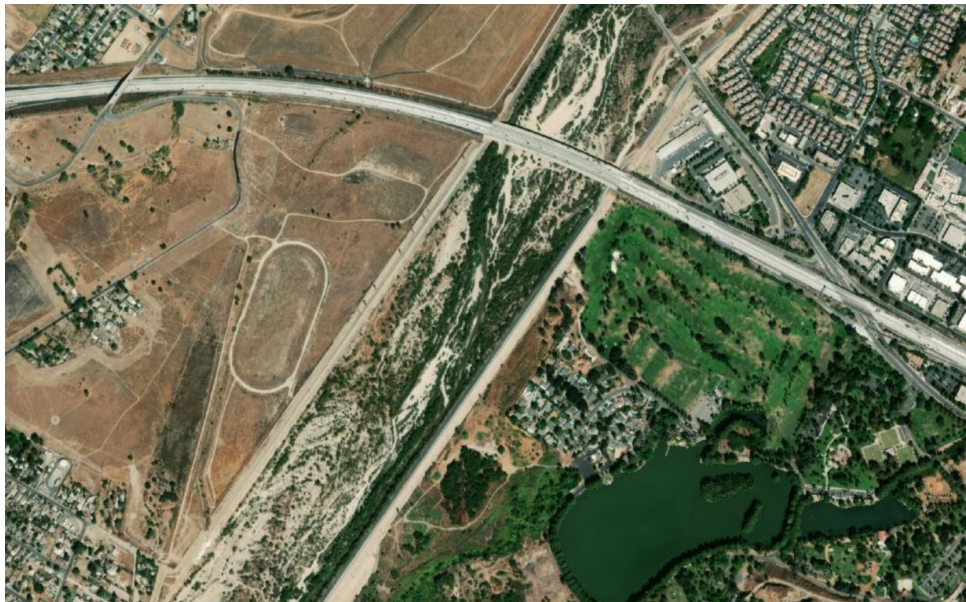
## **Office of Homeless Solutions** **City of Riverside** **Santa Ana River Outreach Plan**

A comprehensive, multidisciplinary plan, to house and provide wrap around supportive services and resources for up to 38 or 48 or 75 unsheltered individuals residing in the Santa Ana River area within the City of Riverside as approved by City Council on December 1, 2020.

This plan of action is utilizing best practices from Centers for Disease Control (CDC) and U.S. Department of Housing and Urban Development Interim Guidance for Unsheltered Homelessness)

<https://www.cdc.gov/coronavirus/2019-ncov/community/homeless-shelters/unsheltered-homelessness.html>

***Objective:*** This plan will commence on December 2, 2020 with the objective of permanently housing up to 38 or 48 or 75 individuals as approved by City Council on December 1, 2020.



## 1. DATA

OHS staff along with CityNet staff, will complete a census/survey of individuals experiencing homelessness in the chosen area in the Santa Ana River.

A census will be critical to attain demographics in allocating appropriate programs, resources and services.

The census will be completed at the onset of the plan.

## 2. OUTREACH SERVICES

Office of Homeless Solutions Outreach staff and CityNet Outreach staff will provide outreach using best practices through the United States Interagency Council on Homelessness - "Core Elements of Effective Street Outreach to People Experiencing Homelessness." ([https://www.usich.gov/resources/uploads/asset\\_library/Core-Components-of-Outreach-2019.pdf](https://www.usich.gov/resources/uploads/asset_library/Core-Components-of-Outreach-2019.pdf))

1. This Plan will be housing focused with referrals into shelter and permanent housing in place for individuals experiencing homelessness.
2. This Plan will be systematic and coordinated with outreach entering unsheltered individuals into the Coordinated Entry System, assessing and referring to other County social services.
3. This Plan will be incorporating person centered, trauma informed and culturally responsive outreach including progressive engagement and motivational interviewing modules of engagement within a four-month period.
4. This Plan will be integrating safety and reduction of harm through the support of Riverside Police Department.

### **Correlation to CDC & HUD Interim Guidance**

On May 13, 2020, the CDC published interim guidance for homeless service providers to plan and response to COVID-19 for the unsheltered homeless population.

<https://www.cdc.gov/coronavirus/2019-ncov/community/homeless-shelters/unsheltered-homelessness.html>

The guidance encourages a "whole community approach" in responding to unsheltered homeless population by involving key partners critical to resources for individuals experiencing homelessness.

As such this plan will include the following ethos of collaborative partners:

<b>CDC Interim Guidance Requirement</b>	<b>Local Response Team Identified</b>
Local Government Leadership	Office of Homeless Solutions
Support Services	CityNet Outreach & Social Services Providers
Housing Authority	City of Riverside and Riverside County Housing, Homelessness Prevention, & Workforce Solutions
CoC Leadership	Riverside University Health Systems - Behavioral Health
Health Care Providers	Department of Public Health
Law Enforcement	Riverside Police Department
Probation	Riverside Sheriff's Department

*\*It should be noted that CDC encourages non-congregate shelter as an immediate response to unsheltered homeless population. If individual housing options are not available, then CDC indicates encampment containment to reduce spread of disease.*

### **3. SHELTER SERVICES**

The CDC Guidance states, “Depending on resources and staff availability, non-group housing options (such as hotel/motels) that have individual rooms should be considered for the overflow, quarantine, and protective housing sites,” for the unsheltered homeless population.

As such, this plan will integrate non-congregate shelter as a best practice response for unsheltered individuals experiencing homelessness through the following:

1. Enlisting CityNet to master lease a motel/motels within the City of Riverside for temporary and bridge shelter for up to 4 months.
2. The City will enter into an agreement with CityNet to operate the site with 24/7 staff, security, meals, laundry, janitorial services, pet management, wraparound supportive service and comprehensive manual operations agreement.

### **4. PERMANENT HOUSING PLACEMENTS**

As a best practice to keep the unsheltered individuals housed, this plan includes an effort to bridge unsheltered homeless population from temporary shelter in hotels/motels into permanent housing placements funded by the County of Riverside through County allocation of state funds from Homeless Housing Assistance Program (HHAP)

1. County of Riverside will provide \$322,000.00 to fund *Rapid Rehousing* program that funds one-year rental assistance program to permanently house individuals experiencing homelessness while case managers work to assist clients into employment and self-sustaining income.

2. OHS and CityNet staff will conduct targeted placements for individuals who may have existing housing opportunities and/or family reunification opportunities.

## **5. SAFETY**

This plan will have a safety component to support the homeless crisis response system to assess safety, sanitation and compliance when addressing encampments for services and appropriate clean ups.

<https://files.hudexchange.info/resources/documents/Infectious-Disease-Toolkit-for-CoCs-Preventing-and-Managing-the-Spread-of-Infectious-Disease-within-Encampments.pdf>

Riverside Police Department and the Public Safety and Engagement Team will provide support in targeted City jurisdiction, through restorative justice model, reducing crime, and maintain clean quality of life in the designated areas.