

SANTA ANA RIVER OUTREACH PLAN

Erin Edwards, Councilmember – Ward 1

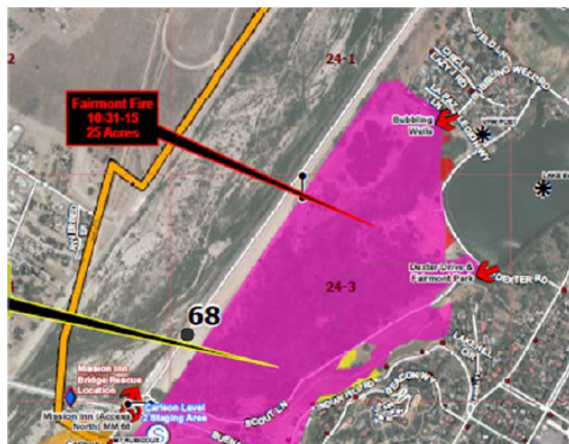
City Council
December 1, 2020

RiversideCA.gov

1

MAP OF TARGET AREA

Priority 1 – This is the old Boy Scout Camp area (Fairmount Park). The homeless count is approximately 75 people. This can be a continuation of a vegetation removal program that was started about three years ago.



RiversideCA.gov

2

OPTIONS FOR CONSIDERATION

| Option | NUMBER OF INDIVIDUALS ASSISTED | TOTAL PROGRAM COST | City HHAP | County HHAP | CARES ACT FUNDING | HOME TBRA | FUNDING SHORTFALL (Measure Z) |
|--------|--------------------------------|--------------------|--------------|--------------|-------------------|--------------|-------------------------------|
| 1 | 38 | \$1,383,150.95 | \$202,379.00 | \$322,000.00 | \$218,200.32 | \$465,000.00 | \$175,571.63 |
| 2 | 48 | \$1,834,209.95 | \$202,379.00 | \$322,000.00 | \$258,062.24 | \$679,000.00 | \$372,768.71 |
| 3 | 75 | \$2,622,921.30 | \$202,379.00 | \$322,000.00 | \$355,994.17 | \$816,233.81 | \$926,314.32 |



RECOMMENDATION

That the City Council:

1. Approve the expenditure plan for the Santa Ana River Outreach Plan; and
2. Authorize a supplemental appropriation of \$175,571.63 to \$926,314.32 from the unallocated Measure Z fund balance based on the option selected for the outreach plan.

