



# RIVERSIDE PUBLIC UTILITIES

## Board Memorandum

**BOARD OF PUBLIC UTILITIES**

**DATE:** January 11, 2021

**GENERAL MANAGER'S REPORT**

**SUBJECT: MONTHLY WATER REPORT – November 2020**

In November, RPU's total water production was 7,315 acre-feet (AF) as shown in Figures 1 and 2. RPU's annual rolling production totals by month are shown in Figure 3. In November, the peak water usage on the potable water distribution system was 68.5 million gallons per day (MGD) and occurred on November 17, 2020 as shown in Figure 4.

RPU's potable water supply, including deliveries to Western Municipal Water District (WMWD), and the City of Norco totaled 5,854 AF, which increased from last November by 392 AF. Under the Cooperative Agreement for Water Production and Conveyance with WMWD 696 AF was wholesaled to WMWD during November. During this 2020/21 fiscal year, a total of 3,457 AF of potable water has been delivered to WMWD. And Under the Agreement for the Sale of Surplus Potable Water and Emergency Water, RPU delivered 14.2 AF to Norco in November 2020.

In November, RPU's Gallons Per-Capita per Day (GPCD) was 180, and its Residential Gallons Per-Capita per Day (R-GPCD) was 106. RPU's annual rolling GPCD was 183, which is below the compliance target specified in SB X7-7 (i.e. 20% reduction by 2020) of 213. RPU's annual rolling R-GPCD was 111 as shown in Figure 5.

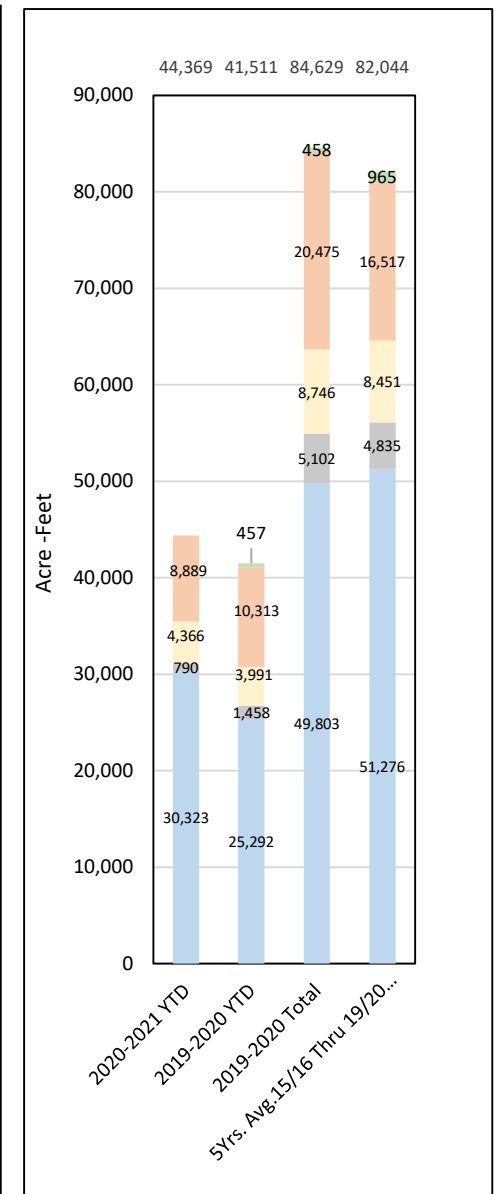
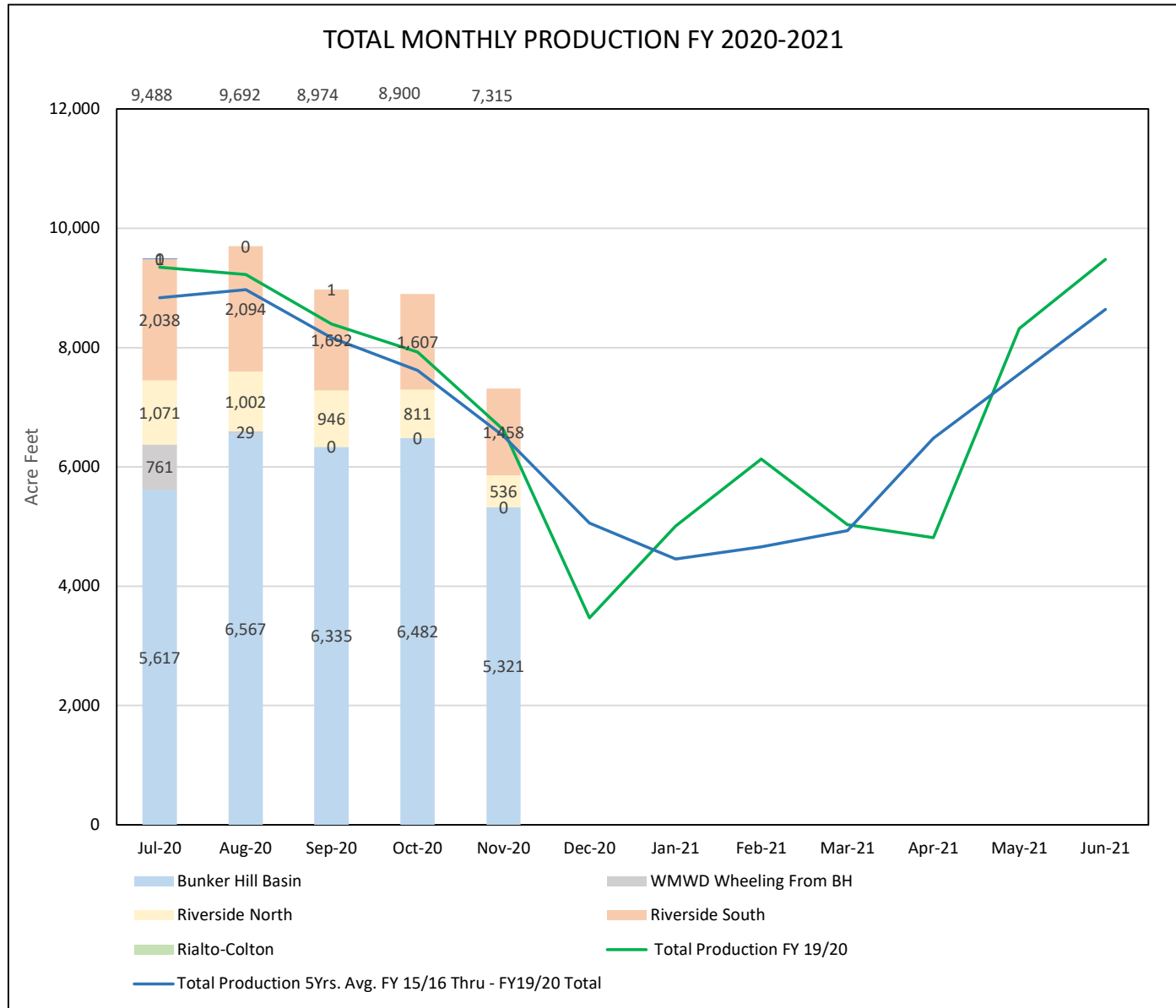
Weather conditions within the City of Riverside showed that November of 2020 was warmer by 1.8 degrees from November last year and experienced an increase of 0.01 inches of rainfall compared to November 2019.

There were no significant events for the water system in November 2020.

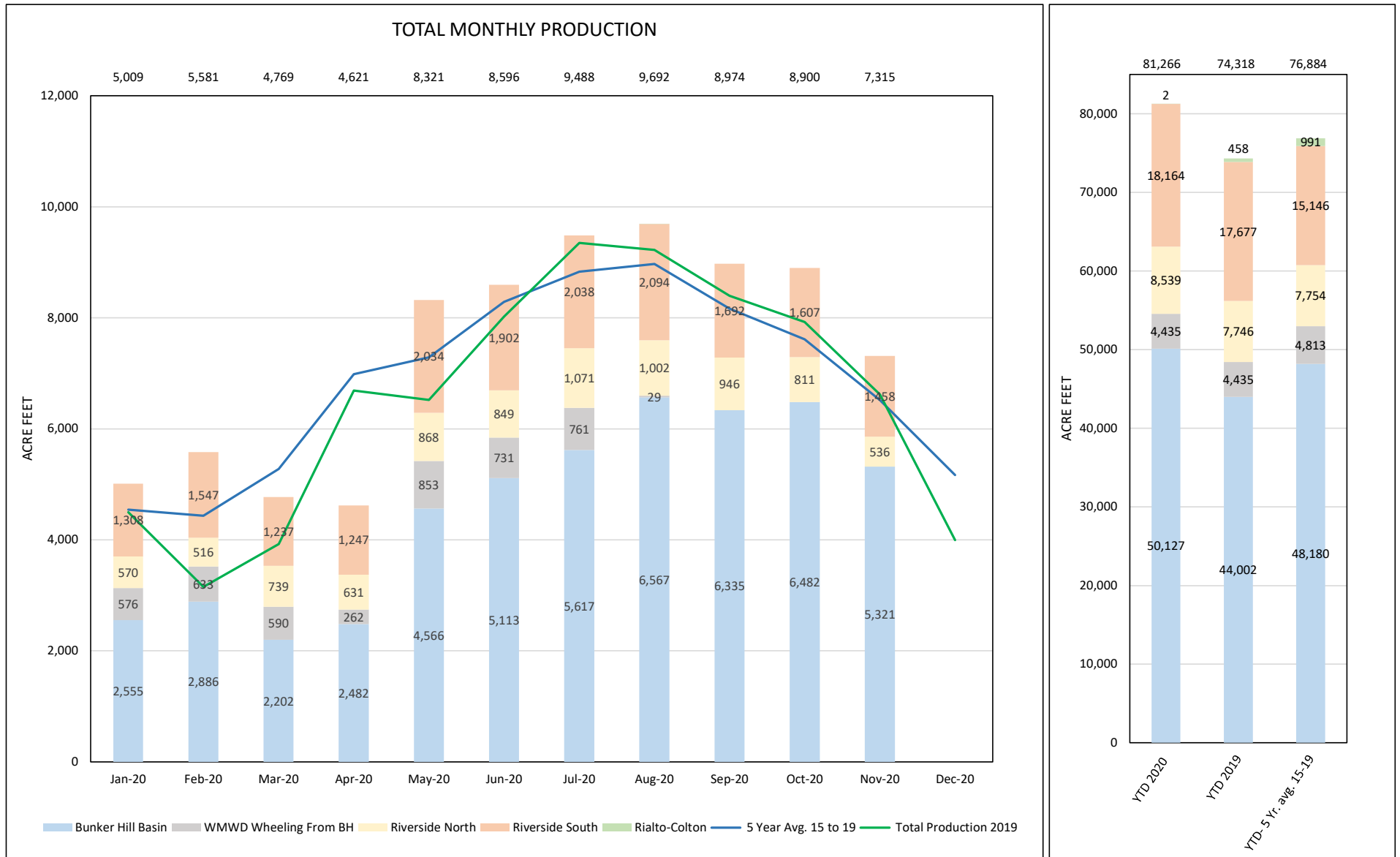
### Basin Groundwater Levels

Groundwater levels in the Bunker Hill, Rialto-Colton, and Riverside North basins are continuing to show a long-term declining trend, while groundwater levels in the Riverside South Basin remain relatively stable as shown in Figure 6. Water levels decreased by 6 feet in the Bunker Hill Basin. Water levels in the Rialto-Colton Basin increased by 4 feet as compared to November of last year. This level increase may be due to decreased pumping activities in the local area near the key monitoring well. Water levels in the Riverside North Basin decreased by 1 foot, while the levels in the Riverside South Basin increased by 2 feet as compared to last year.

# FIGURE 1: RPU WATER - TOTAL PRODUCTION REPORT - FISCAL YEAR 2020 - 2021



**FIGURE 2: RPU WATER - TOTAL PRODUCTION REPORT - CALENDAR YEAR 2020**



**FIGURE 3: RPU WATER - TOTAL PRODUCTION REPORT**

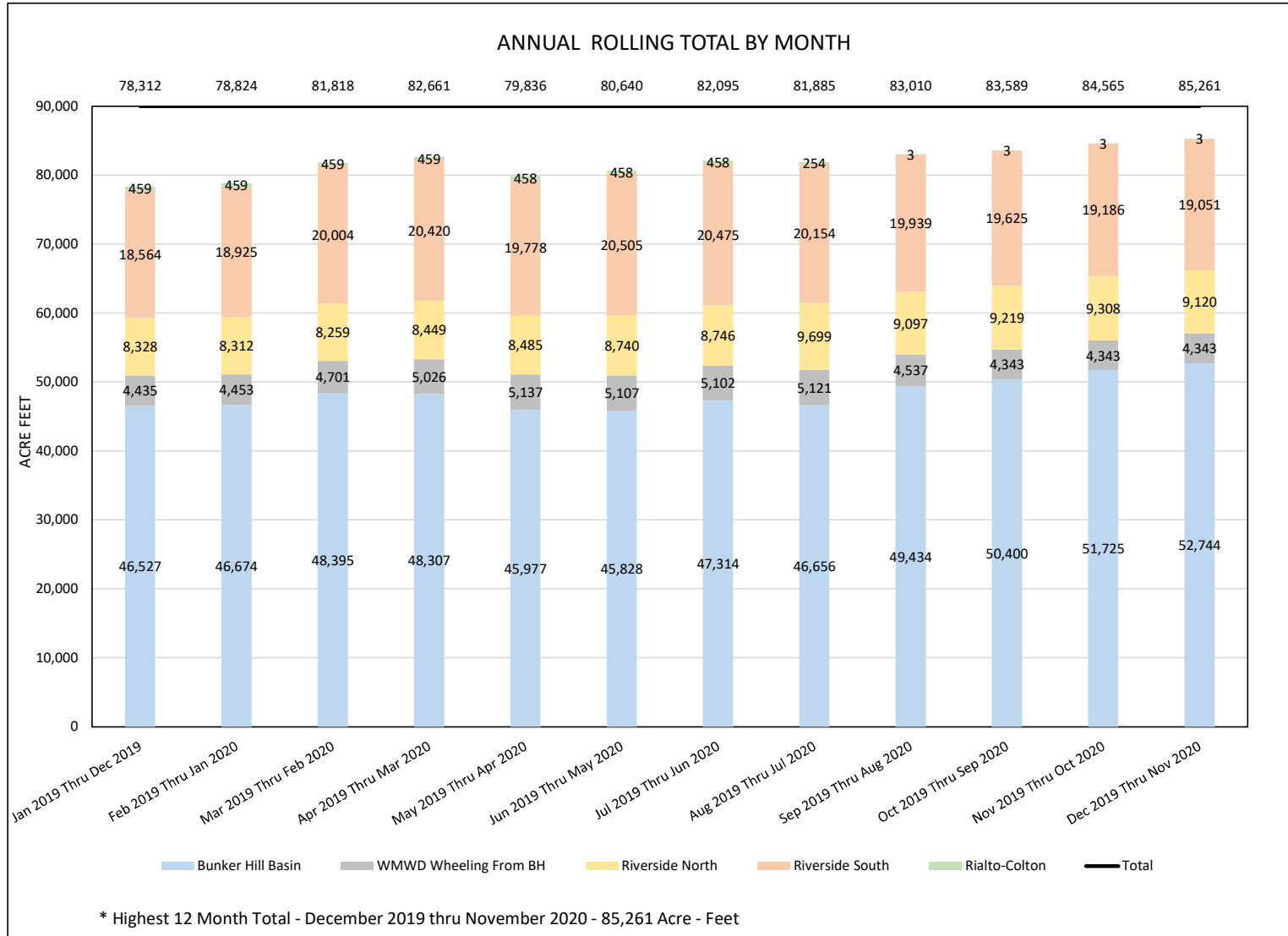
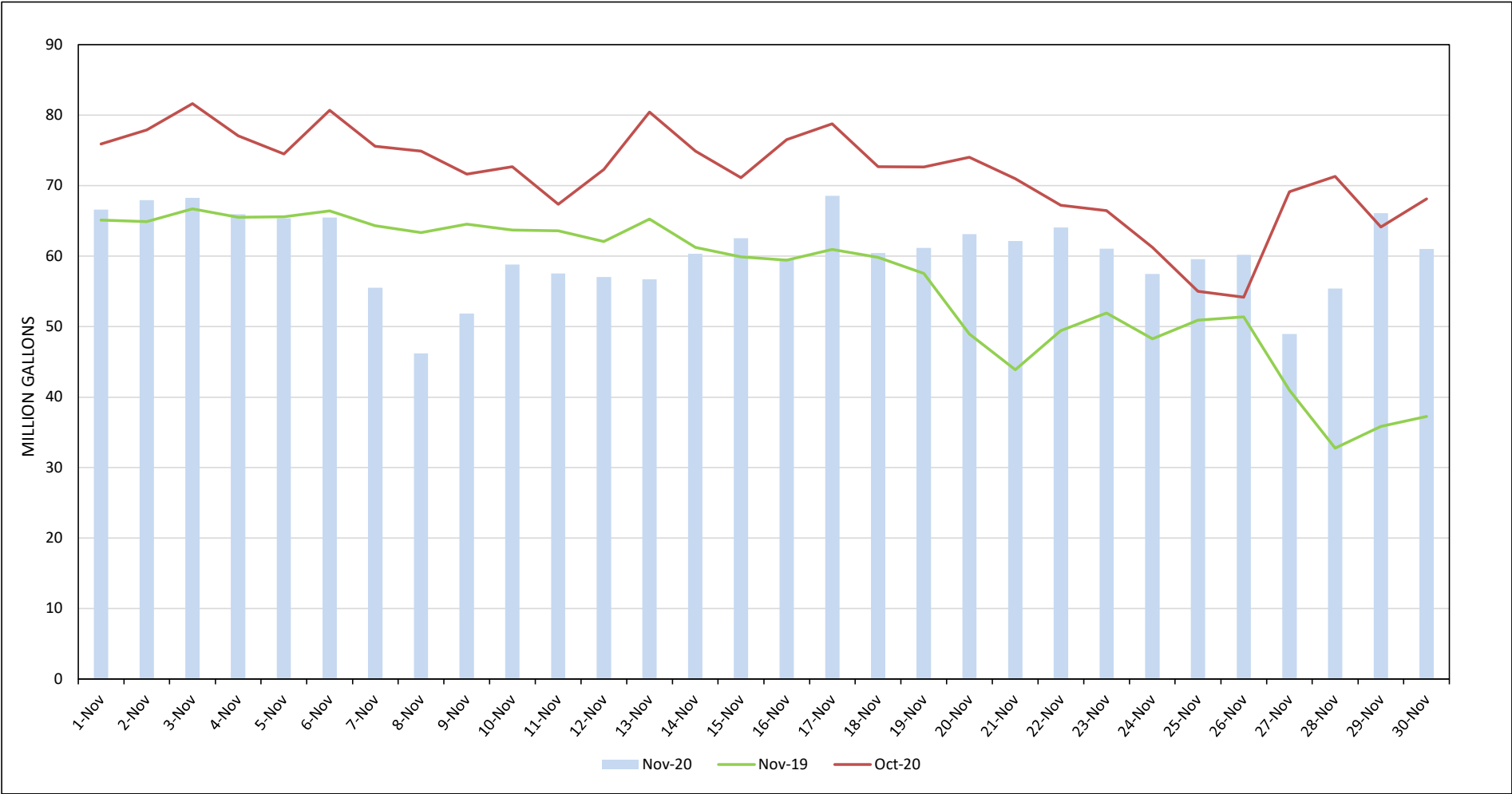
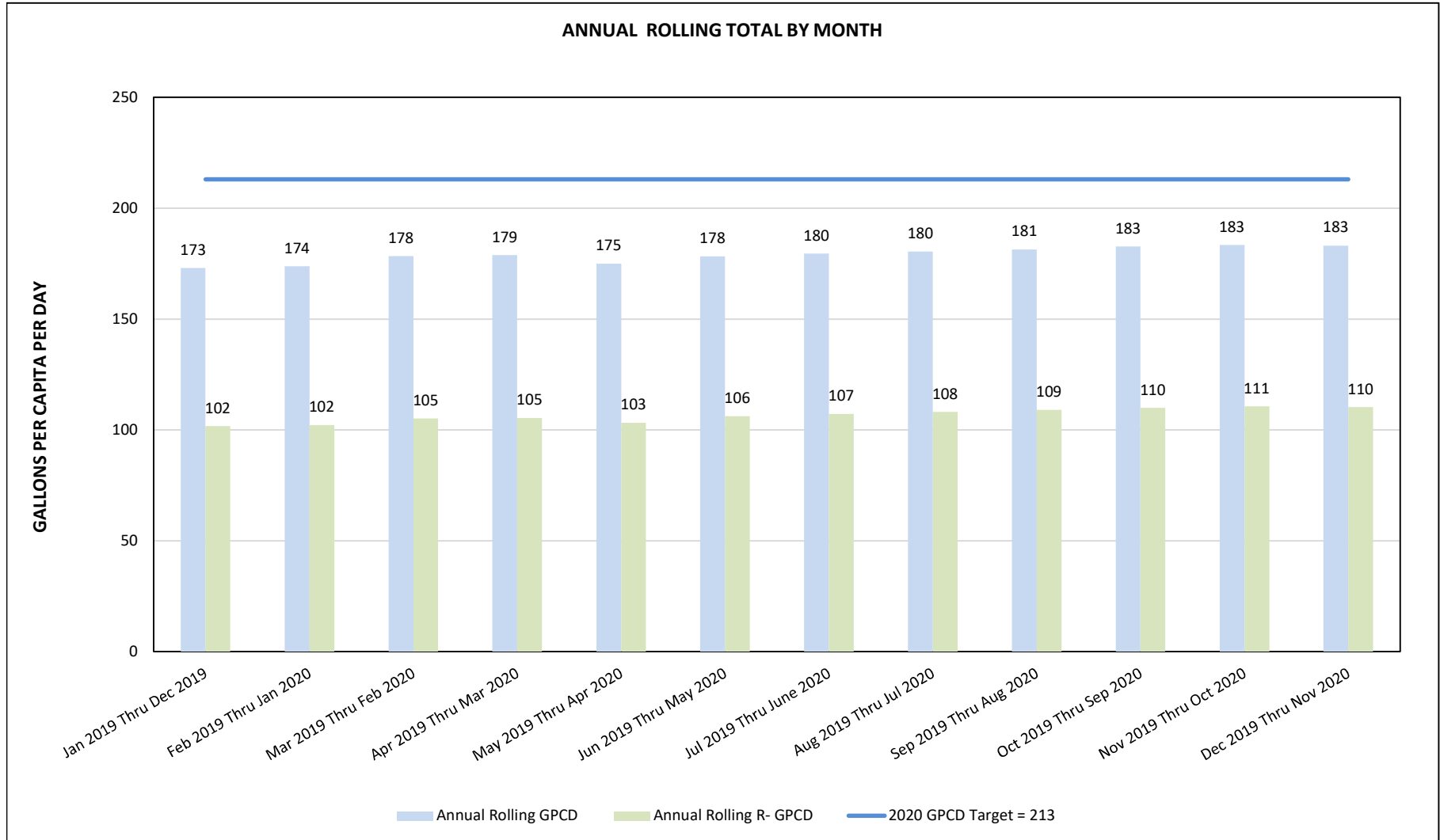


FIGURE 4: RPU WATER - TOTAL MONTHLY CONSUMPTION REPORT

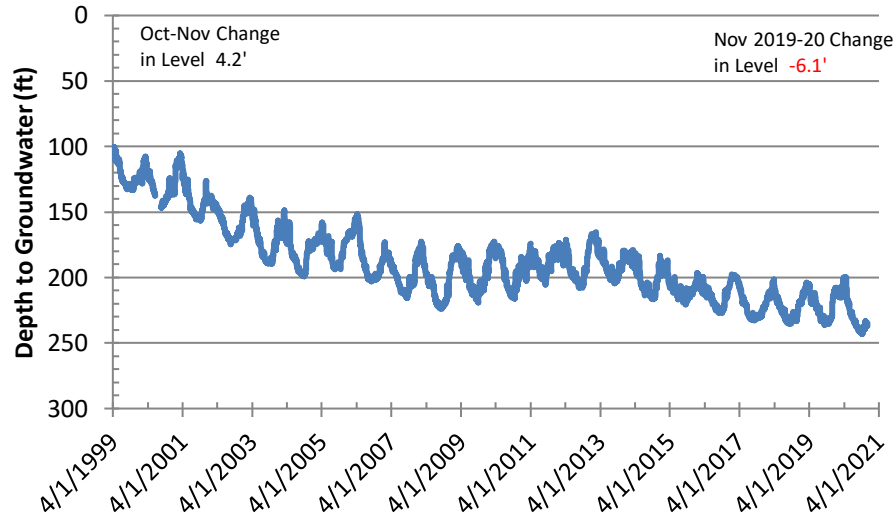


**FIGURE 5: RPU WATER - TOTAL GPCD AND R-GPCD ANNUAL ROLLING**

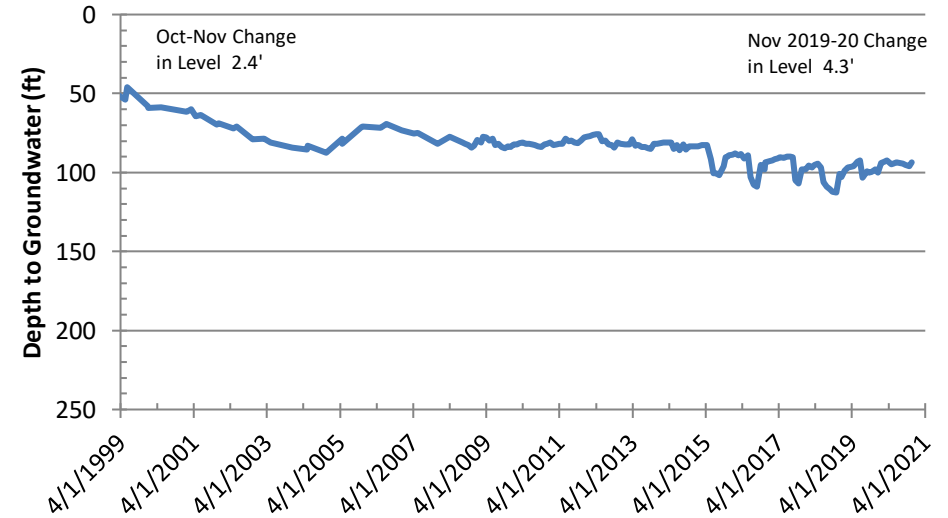


# Figure 6: Basin Groundwater Levels

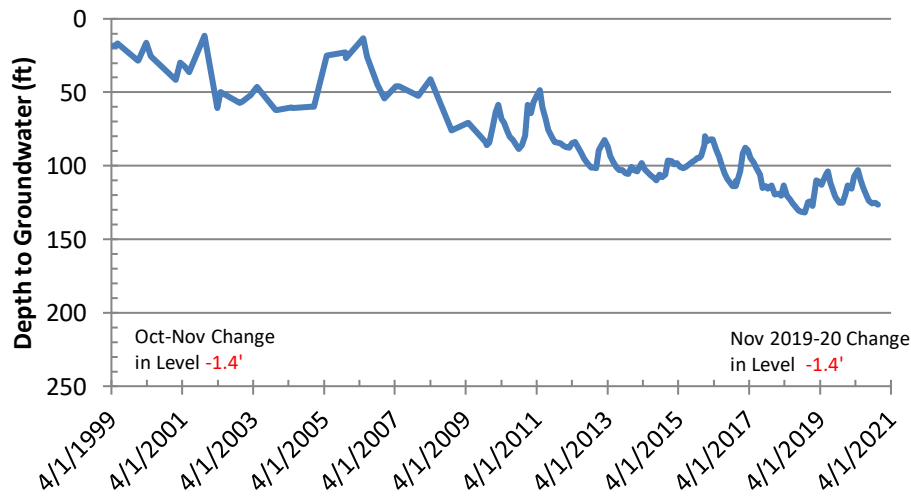
## Bunker Hill Basin Sierra High School (USGS)



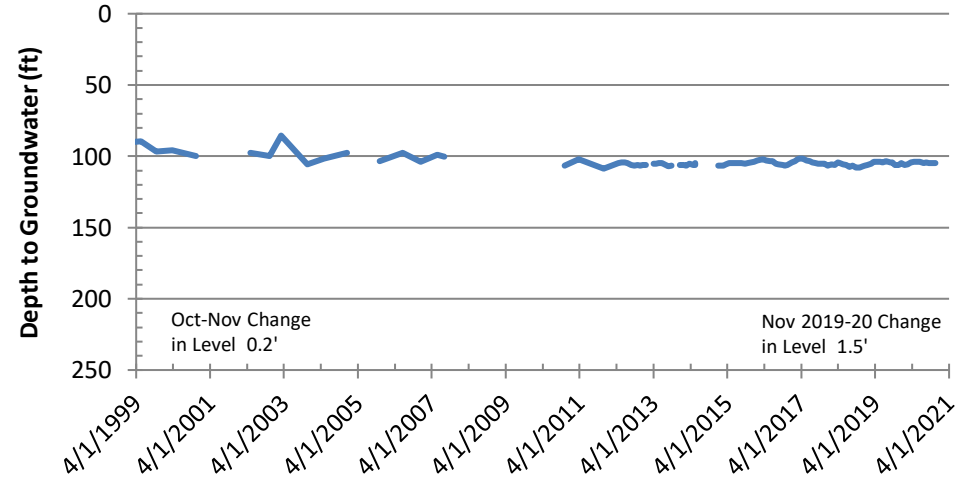
## Rialto-Colton Basin Johnson 1



## Riverside North Basin Flume 5



## Riverside South Basin Cunningham





# Figure 7: Groundwater Basin Vicinity Map

