



# UPDATE ON THE URBAN FORESTRY POLICY MANUAL

Public Works Department

Land Use/Sustainability/Resilience Committee  
January 11, 2021

RiversideCA.gov

1

## BACKGROUND

- **March 12, 2015**

Following an update by staff on the Urban Forestry Policy Manual, the Land Use Committee made the following recommendations:

- No changes to maintenance responsibilities for street trees and sewer laterals
- More flexibility on tree removals
- More proactive removal of problem trees



2

RiversideCA.gov

2

## BACKGROUND

- **April 28, 2015**

Council concurred with the Committee's recommendations

Staff worked with Ad-Hoc Committee of the Park and Recreation Commission to facilitate the changes in the Urban Forestry Policy Manual

- **July 13, 2015**

Commission unanimously approved the updated Policy Manual



3

RiversideCA.gov

3

## KEY POLICY CHANGES IN 2015

- Authorized Public Works Director to approve tree removals in accordance with the Policy Manual

- Allowed Class II inappropriate trees (Holly Oak and Elm) to be removed by property owner with approval of Public Works Director



4

RiversideCA.gov

4

## KEY POLICY CHANGES IN 2015

- **California Pepper Tree** was added to classification of Class I inappropriate tree
  - This will allow for more proactive removal of these trees that tend to decay from the inside out and have an invasive root system
- 2008 change to make city responsible for sewer lateral lines within road right-of-way is now reflected in the manual



California Pepper Tree



5

RiversideCA.gov

5

## KEY POLICY CHANGES IN 2015



- Goal to work closely with our residents to proactively remove problematic trees such as those with invasive roots and replace them with appropriate species
- If all residents on a specific street agree to removal of problematic trees, they may all be removed at once instead of in increments of 20%



6

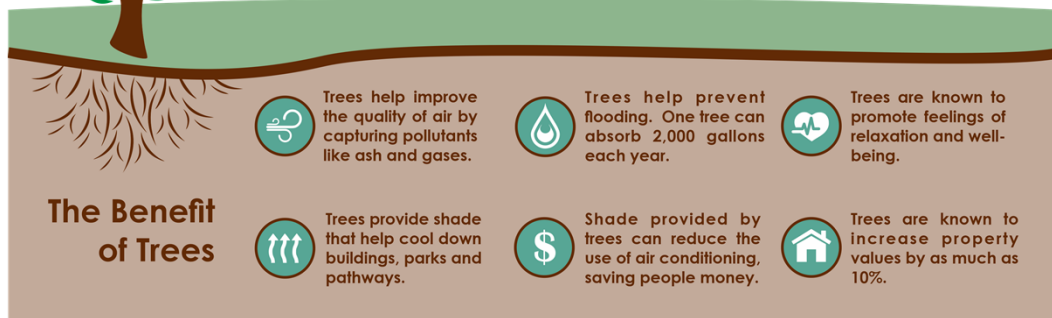
RiversideCA.gov

6

## DISCUSSION



The City's Urban Forest provides social, communal, environmental, and economic benefits to the entire community.



RiversideCA.gov

7

## DISCUSSION

1. Since the implementation of the Manual's 2015 updates, there has been added flexibility for staff working with individual residents regarding problematic trees.
2. Has helped the Public Works Engineering and Streets Divisions better facilitate repairs of damaged infrastructure such as curb, gutter, sidewalks and roadways caused by invasive tree root systems. After tree removal, staff are able to provide alternative options for compatible trees.



RiversideCA.gov

8

## DISCUSSION

3. The recently adopted 2025 City Council Strategic Plan contains the following Environmental Stewardship actions related to our Urban Forest:

- Update urban forestry policies to select tree species that maximize carbon sequestration and building energy reduction potential.
- Boost green infrastructure citywide by planting trees in parks, public spaces, and private areas along with adding landscaping around buildings, green roofs and promoting healthy soils management, including compost applications. 9



RiversideCA.gov

9

## DISCUSSION

4. In order to meet the objectives set by the Green Action Plan and Climate Action Plan, staff pursued grant funding allowing for the planting of additional trees and have been awarded:

- The **2020 Transformative Climate Communities** grant (Eastside Neighborhood)
- The **2019 Affordable Housing and Sustainable Communities** grant (Vine Street Mobility Hub)
- The **2019 Urban Greening Grant** (Gage Canal Trail)
- The **2018 Urban Greening Grant** (a new urban farmland resource & training center)



10

RiversideCA.gov

10

## DISCUSSION

5. Staff will work with an Ad-HOC committee of the Park and Recreation Commission in 2021, to receive further recommendations.
6. To continue facilitate community involvement, staff will be recommending that we reach out and work with community groups such as Neighbors of the Wood Streets (NOWS) and Victoria Avenue Forever (VAF), for their suggestions or recommendations.



11

RiversideCA.gov

11

## DISCUSSION

7. Once this process is completed, staff will return to the Land Use/Sustainability/Resilience Committee for their review and recommendations before submitting to the City Council for review.



12

RiversideCA.gov

12

## RECOMMENDATIONS

That the Land Use/Sustainability/Resilience Committee:

1. Receive and file the update on the Urban Forestry Policy Manual; and
2. Provide recommendations on updating the Urban Forestry Policy Manual.



13

RiversideCA.gov