



RIVERSIDE PUBLIC UTILITIES

Board Memorandum

BOARD OF PUBLIC UTILITIES

DATE: APRIL 12, 2021

GENERAL MANAGER'S REPORT

SUBJECT: MONTHLY WATER REPORT – FEBRUARY 28, 2021

In February, RPU's total water production was 4,866 acre-feet (AF) as shown in Figures 1 and 2. RPU's annual rolling production totals by month are shown in Figure 3. In February, the peak water usage on the potable water distribution system was 61.2 million gallons per day (MGD) and occurred on February 24, 2021 as shown in Figure 4.

RPU's potable water supply, including deliveries to Western Municipal Water District (WMWD), and the City of Norco totaled 4,513 AF, which decreased from last February by 334 AF. Under the Cooperative Agreement for Water Production and Conveyance with WMWD 670 AF was wheeled to WMWD during February. During this 2020/21 fiscal year, a total of 5,154 AF of potable water has been delivered to WMWD. And Under the Agreement for the Sale of Surplus Potable Water and Emergency Water, RPU delivered 0 AF to Norco in February 2021.

In February, RPU's Gallons Per-Capita per Day (GPCD) was 137, and its Residential Gallons Per-Capita per Day (R-GPCD) was 81. RPU's annual rolling GPCD was 188, which is below the compliance target specified in SB X7-7 (i.e. 20% reduction by 2020) of 213. RPU's annual rolling R-GPCD was 113 as shown in Figure 5. The new performance standard will be published in Fall 2021 and will be implemented in 2023.

Weather conditions within the City of Riverside showed that February of 2021 was cooler by 2.8 degrees from February last year and experienced an increase of 1.05 inch of rainfall compared to February 2020.

There were no significant events for the water system in February 2021.

Basin Groundwater Levels

Groundwater levels in the Bunker Hill, Rialto-Colton, and Riverside North basins are continuing to show a long-term declining trend, while groundwater levels in the Riverside South Basin remain relatively stable as shown in Figure 6. Water levels decreased by 12 feet in the Bunker Hill Basin compared to February of last year. Water levels in the Rialto-Colton Basin decreased by 4 feet as compared to February of last year. Water levels in the Riverside North Basin decreased by 3 feet, while the levels in the Riverside South Basin remained constant.

FIGURE 1: RPU WATER - TOTAL PRODUCTION REPORT - FISCAL YEAR 2020 - 2021

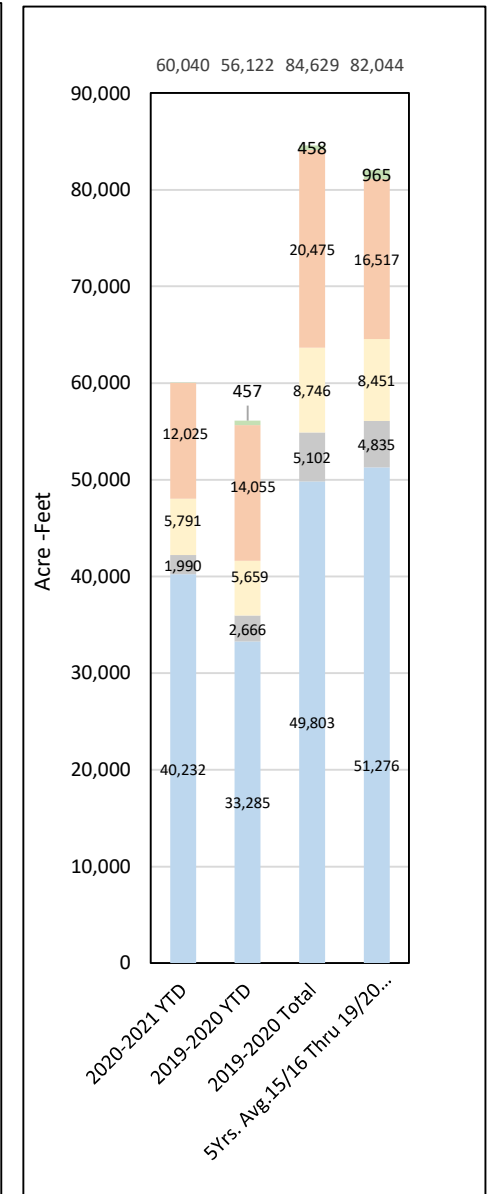
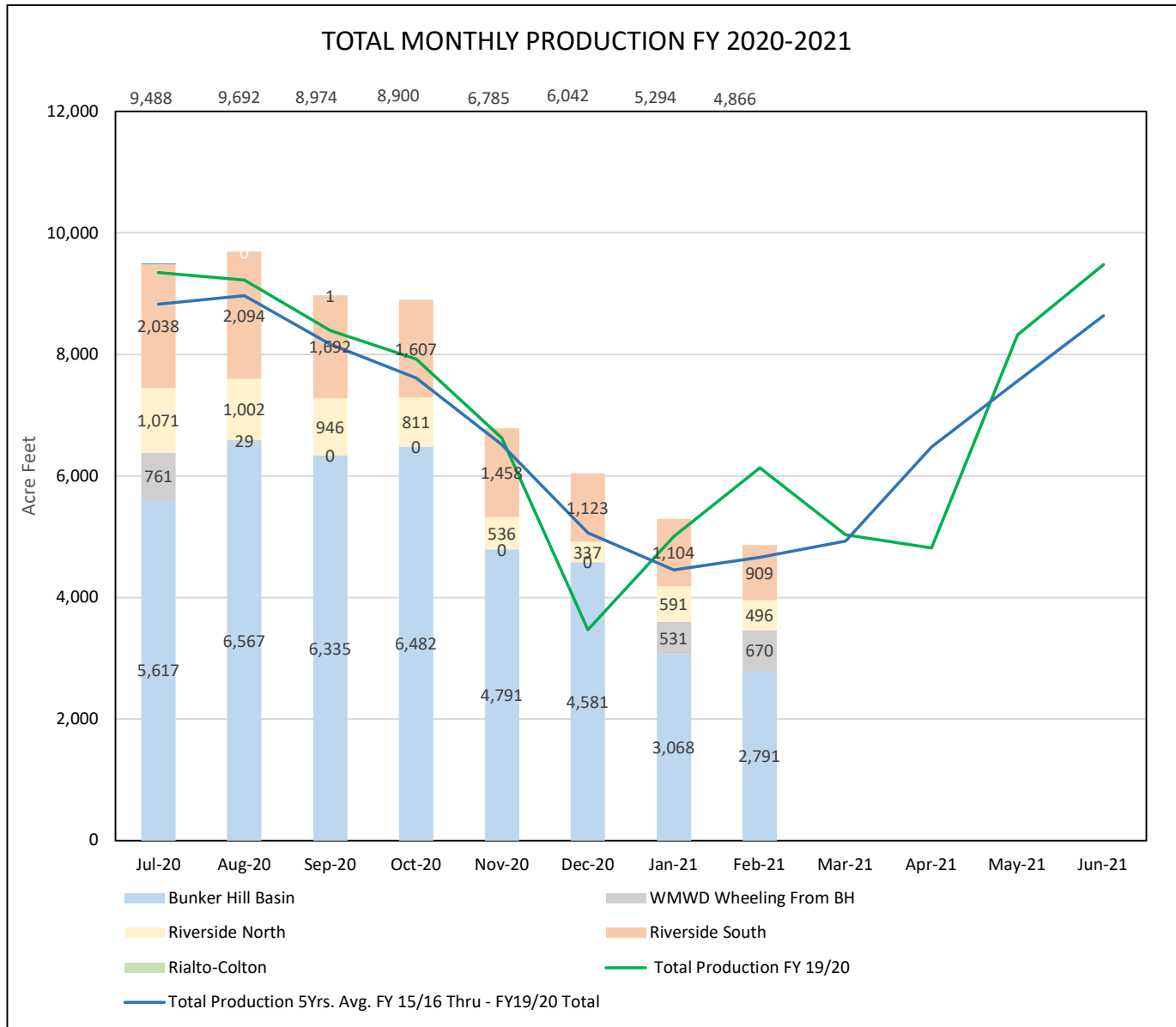


FIGURE 2: RPU WATER - TOTAL PRODUCTION REPORT - CALENDAR YEAR 2021

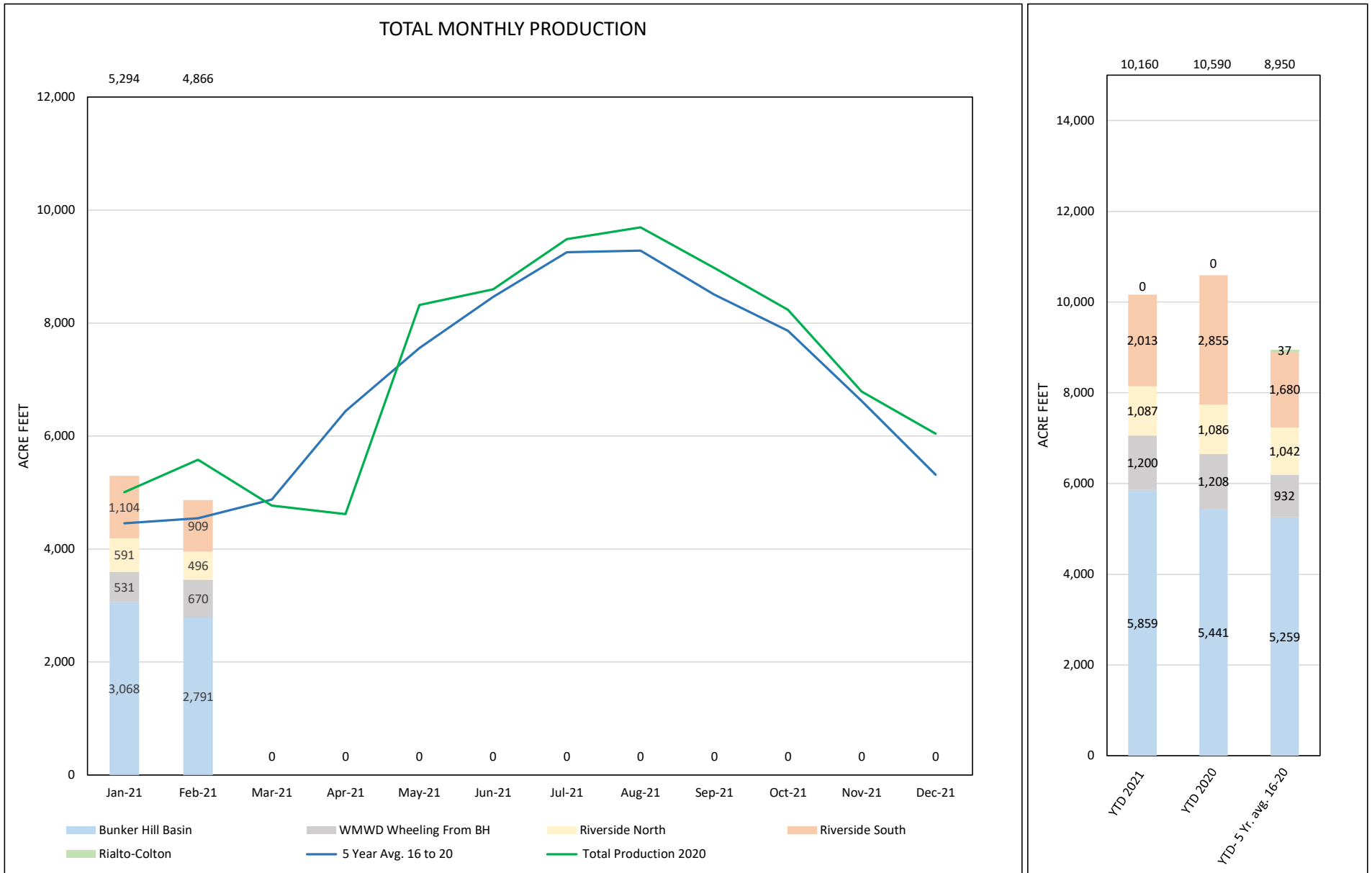


FIGURE 3: RPU WATER - TOTAL PRODUCTION REPORT

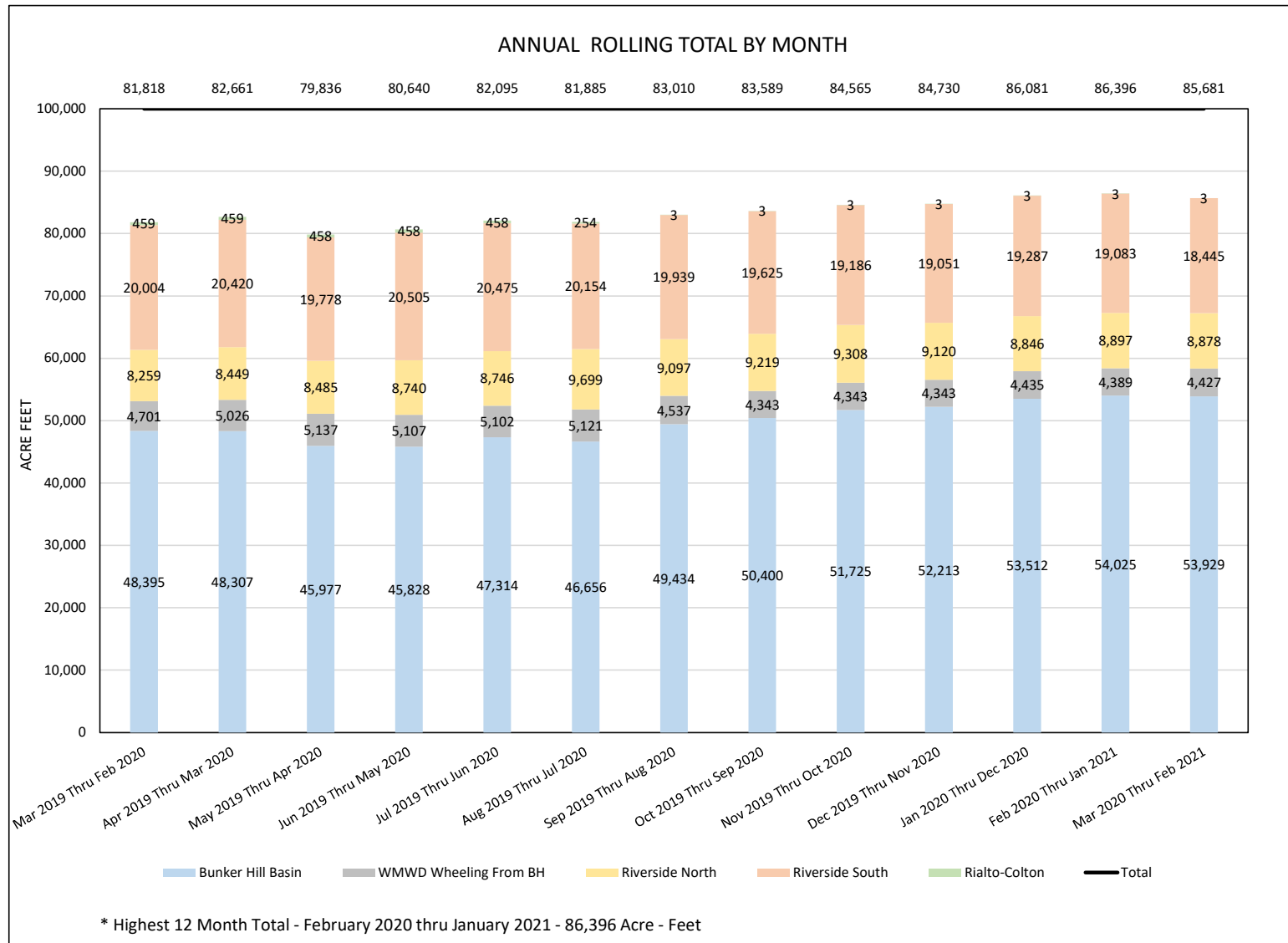


FIGURE 4: RPU WATER - TOTAL MONTHLY CONSUMPTION REPORT

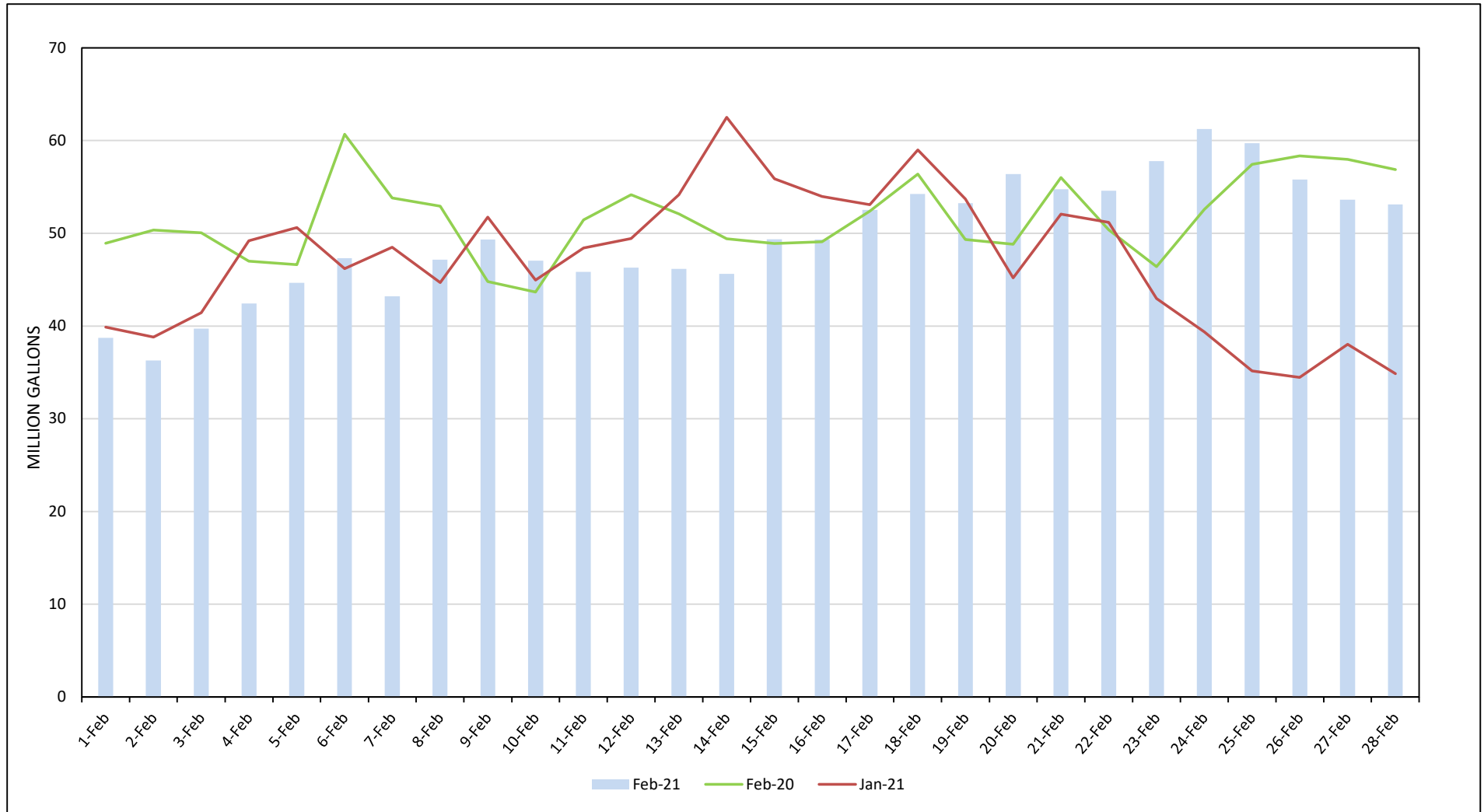


FIGURE 5: RPU WATER - TOTAL GPCD AND R-GPCD ANNUAL ROLLING

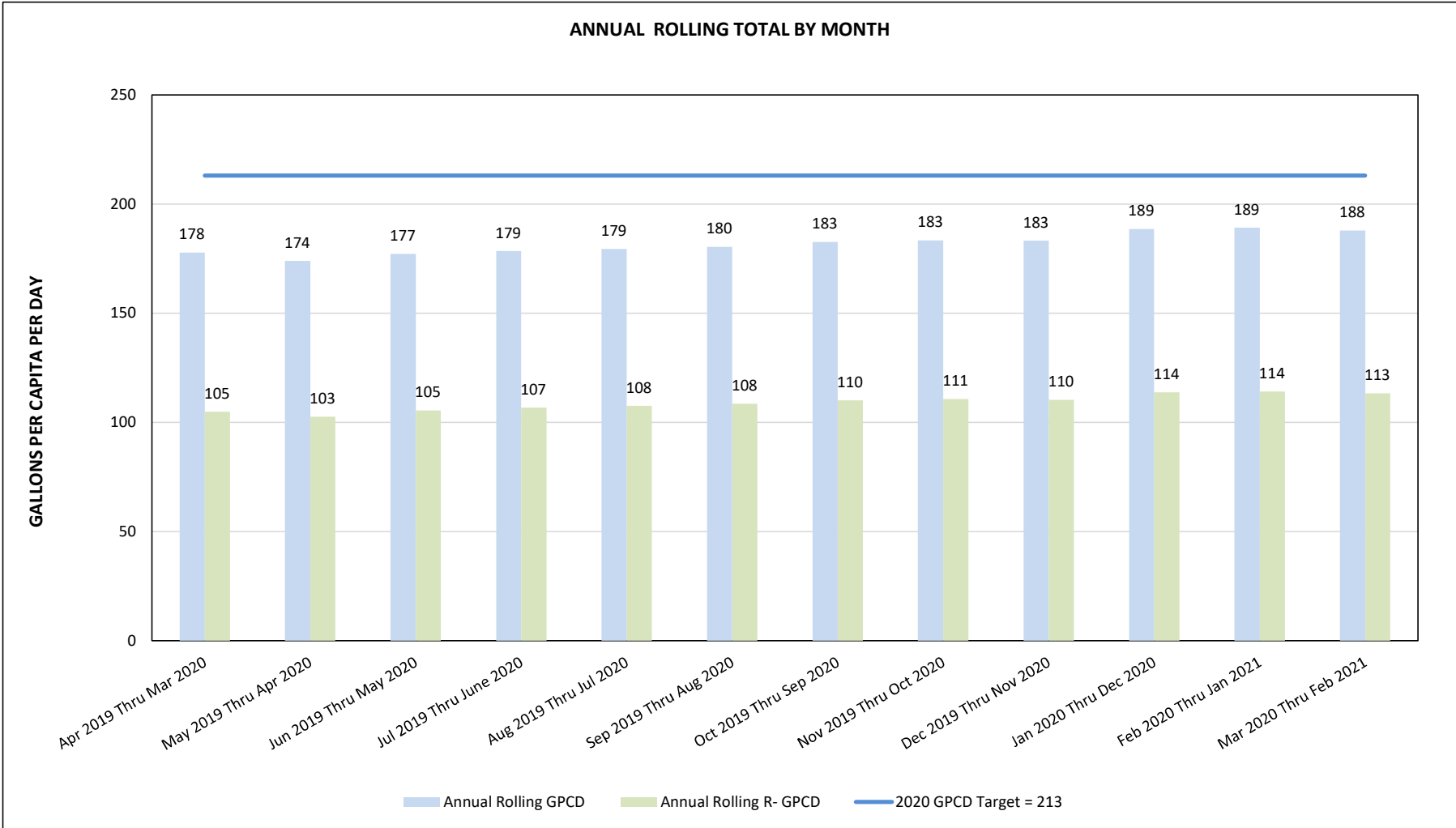
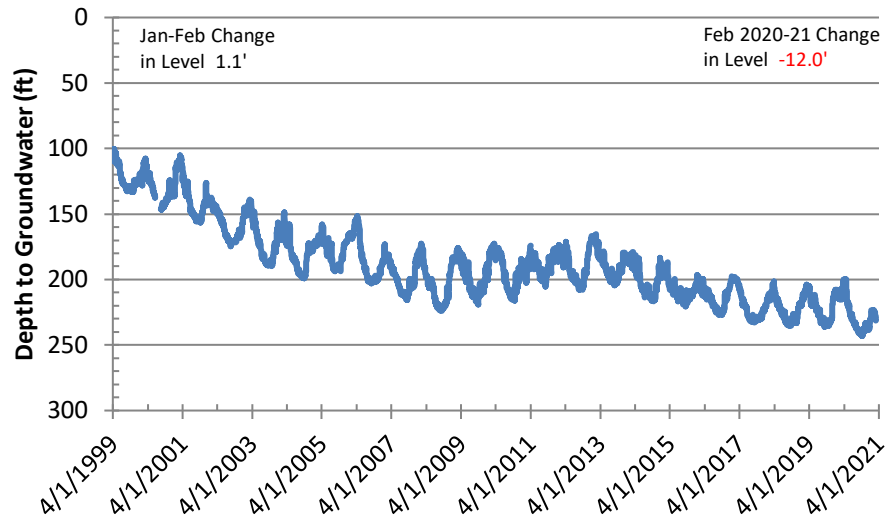
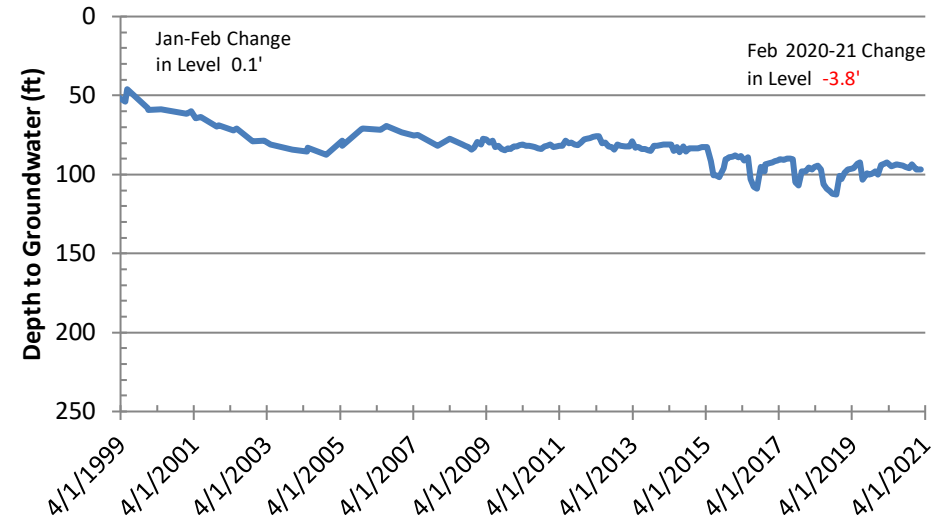


Figure 6: Basin Groundwater Levels

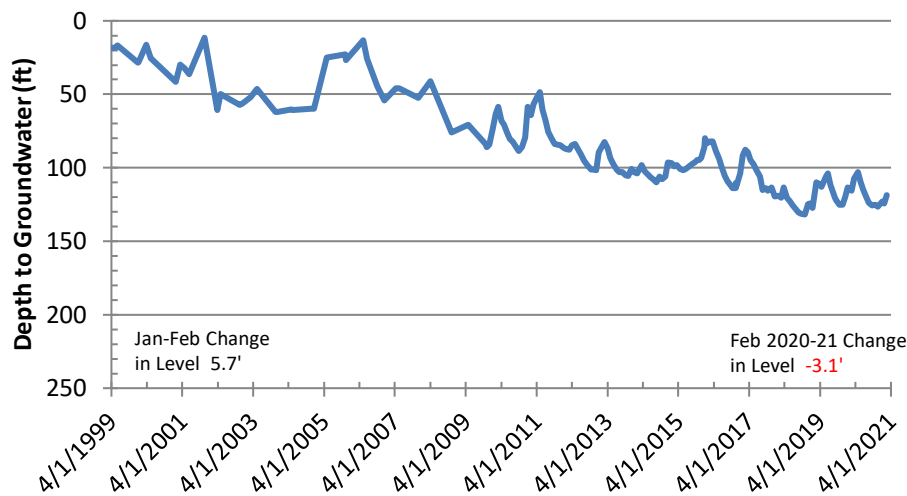
Bunker Hill Basin Sierra High School (USGS)



Rialto-Colton Basin Johnson 1



Riverside North Basin Flume 5



Riverside South Basin Cunningham

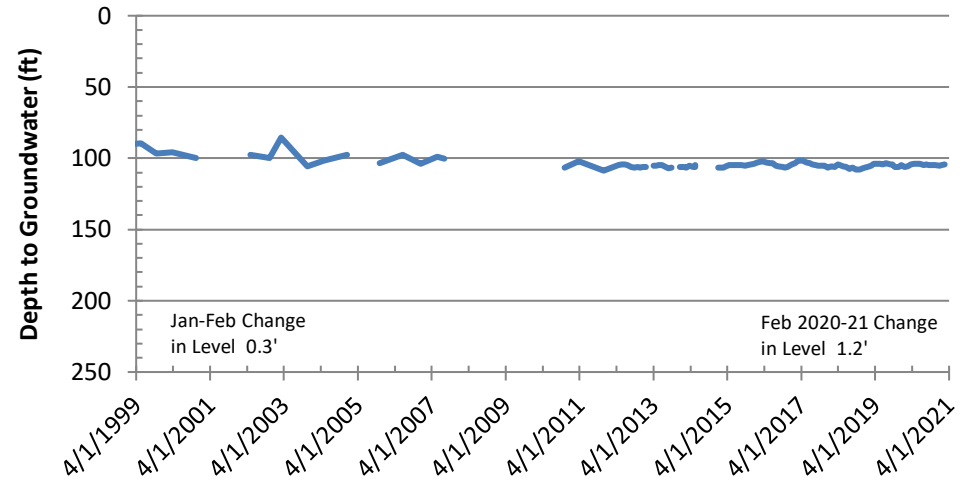


Figure 7: Groundwater Basin Vicinity Map

