

# **Trujillo Water Company History**

Trujillo Water Company Directors' Meeting  
May 10, 2021

# HISTORICAL SETTING

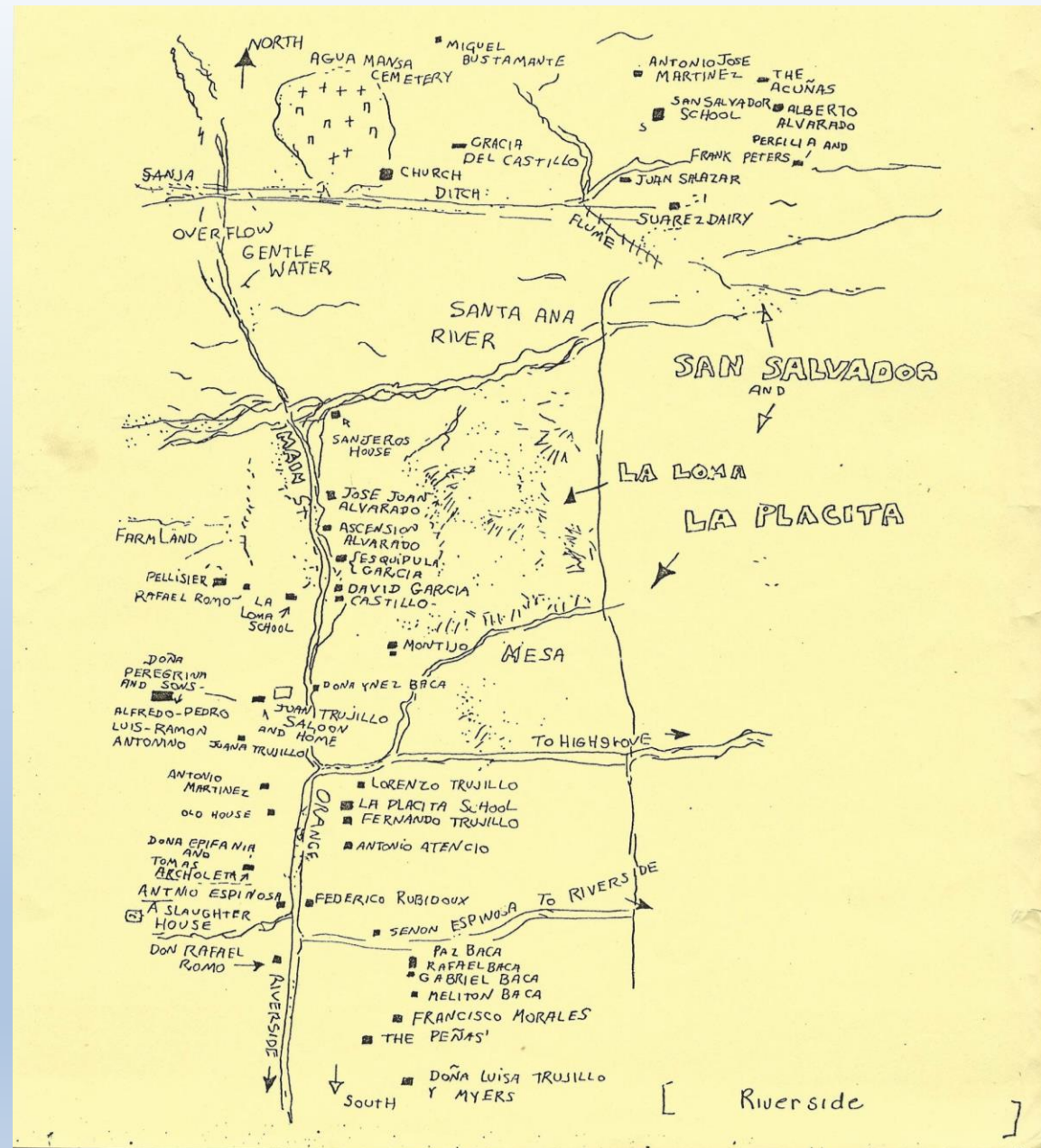
1. San Gabriel Mission
2. Secularization → Land Grants (Ranchos)
3. Rancho Jurupa
  1. Juan Bandini (1838)

# LA PLACITA AND AGUA MANSA

1. Bandini donated 2,000 acres (1842)
  1. Settlers from New Mexico
  2. Protect trade route (LA to Santa Fe)
2. Agua Mansa on north
3. La Placita de los Trujillos on south

# GREAT FLOOD OF 1862

1. Agua Mansa was destroyed
2. La Placita was heavily damaged
3. Many settlers relocated to Colton/San Bernardino



# NEW NEIGHBORS

1. Bandini → Benjamin Wilson (1843)

1. Downtown Riverside (mesa)

2. Wilson → Isaac Williams → Louis Robidoux (1849)

1. Rubidoux Ranch

3. California Silk Center Association (1869)

4. John W. North (1870)

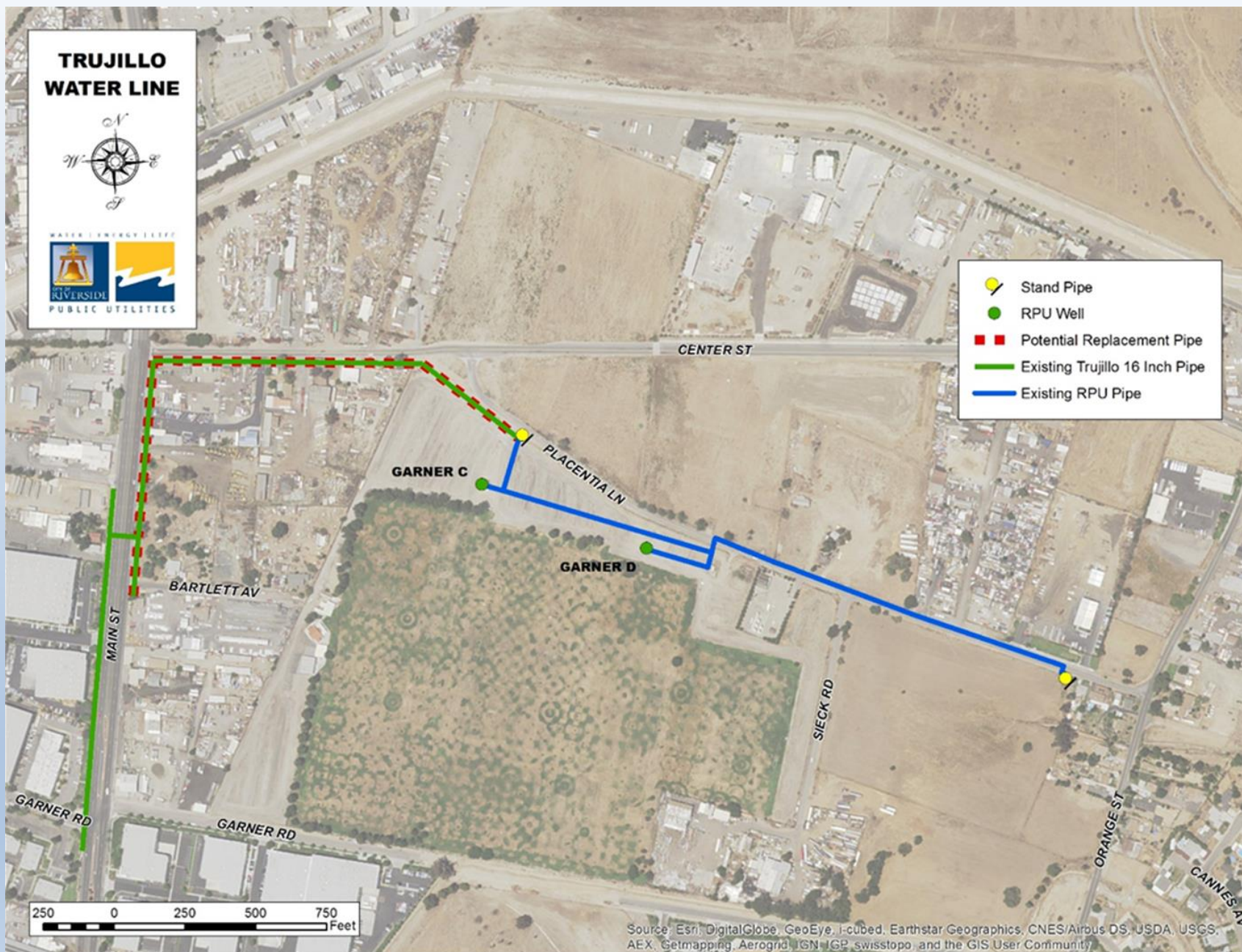
# TENSIONS

1. Land (La Placita settlers used mesa for grazing)
2. Language
3. Culture
4. Water!

# WATER PARTNERS

1. Lower Riverside Canal interfered with Trujillo Ditch
  1. 1879 Court Decree
  2. Lower canal
  
2. Later agreements = 900 gpm
  1. Upper canal
  2. Local well





# TRUJILLO PIPELINE



# ENTITLEMENTS

## Trujillo Water Company Entitlements

<b>GPM Commitment</b>	<b>900</b>
<b>AFY Commitment</b>	<b>1,452</b>

<b>AFY per Share</b>	<b>7.15</b>
----------------------	-------------

<b>Shareholders</b>	<b>Shares</b>	<b>%</b>	<b>AFY</b>
City of Riverside	157.83	77.69%	1,128
Hamilton	20.46	10.07%	146
Garner	20.46	10.07%	146
Console	2.40	1.18%	17
Dickey	2.00	0.98%	14
<b>Total</b>	<b>203.15</b>	<b>100%</b>	<b>1,452</b>

<b>Non-RPU</b>	<b>45.32</b>	<b>22.31%</b>	<b>324</b>
----------------	--------------	---------------	------------



# RECOMMENDATIONS

That the Trujillo Water Company Board Receive and File the Report