



## River-side Gateway Park Project Suite – Consultant Contract Award

Parks, Recreation and Community  
Services Department

City Council  
May 11, 2021

RiversideCA.gov

1

## BACKGROUND

1. Santa Ana River Task Force (2003 and 2009) recommends improvements to parks and open spaces along the Santa Ana River.
2. In 2014, the Santa Ana River Conservancy was formed under the State Coastal Conservancy. \$2,025,000 in grant funding was provided to City to conduct community outreach, prepare master plans, and conduct California Environmental Quality Act project reviews for 9 park and recreation sites along the river, and to acquire a 4-acre parcel.

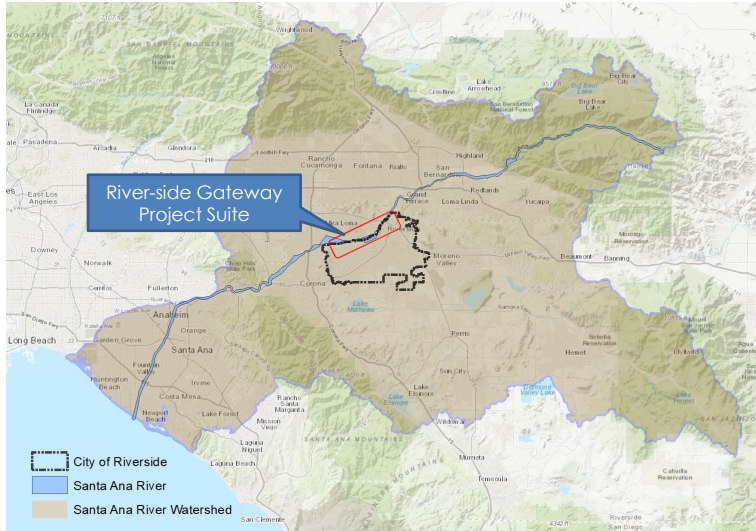


2

RiversideCA.gov

2

# RIVER-SIDE GATEWAY PROJECT SUITE

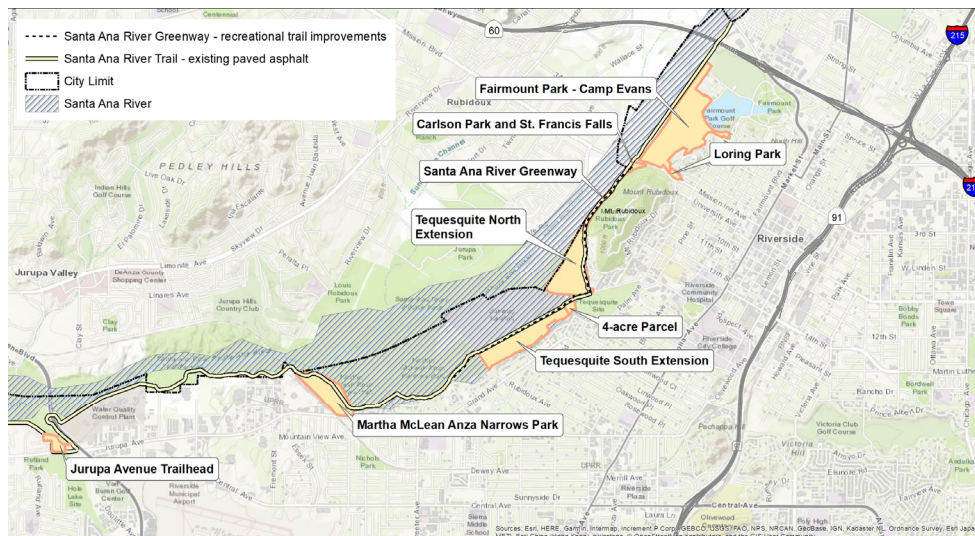


3

RiversideCA.gov

3

# RIVER-SIDE GATEWAY PROJECT SUITE

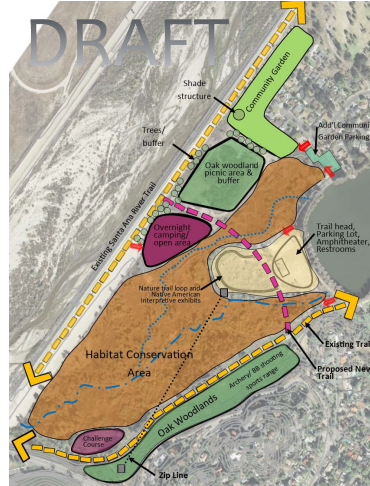


4

RiversideCA.gov

4

# FAIRMOUNT PARK - CAMP EVANS MASTER PLAN



Potential Opportunities:

1. Habitat conservation area
2. Oak woodlands
3. Trailhead parking lot
4. Small amphitheater
5. Restrooms
6. Nature/cultural interpretive trail
7. Challenge course
8. Zip line
9. Camping area
10. Picnic area
11. Community garden
12. Archery/BB shooting sports range
13. Improved Fire Dept access

5



RiversideCA.gov

5

# LORING PARK - MASTER PLAN



Potential Opportunities:

1. Walking trails
2. Stairs – connect to Camp Evans and SART
3. Vista point
4. Landscape and irrigation
5. Parkour/exercise stations
6. Public art

6



RiversideCA.gov

6

## CARLSON PARK – ST. FRANCIS FALLS RESTORATION



— Santa Ana River Trail  
 - - - Santa Ana River Greenway



### Potential Opportunities:

1. Public art competition to receive proposals to renovate historic water feature to use lights or other artistic method to simulate running water
2. Re-install the historic neon sign
3. Trailhead amenities



7

RiversideCA.gov

7

## SANTA ANA RIVER GREENWAY – RECREATIONAL TRAIL IMPROVEMENTS



### Potential Opportunities:

1. Add decomposed granite trail parallel to existing paved asphalt trail to separate slower pedestrian traffic
2. Trees, landscaping, irrigation
3. Lighting
4. Signage
5. Emergency phones
6. Drinking fountains
7. Seating/rest areas

- - - Santa Ana River Greenway Recreational Trail Improvements  
 — Santa Ana River Trail



8

RiversideCA.gov

8

# TEQUESQUITE NORTH EXTENSION - MASTER PLAN AND TRAILHEAD IMPROVEMENTS



## Potential Opportunities:

1. Habitat
2. Native plant interpretive garden
3. SART trailhead with signage, rest area, drinking fountain
4. Bike repair café
5. Educational/interpretive trails
6. Lighting
7. Vehicle access control to block unauthorized access to river bottom

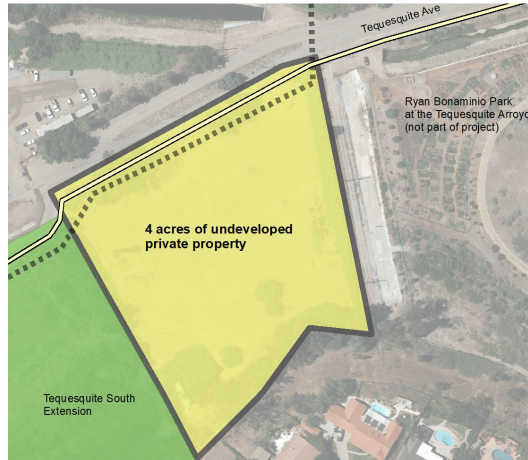


9

RiversideCA.gov

9

# PRIVATE PROPERTY PURCHASE – 4 ACRES



## Potential Opportunities:

1. Acquisition
2. Dog park
3. Skate park
4. Community garden expansion, agriculture

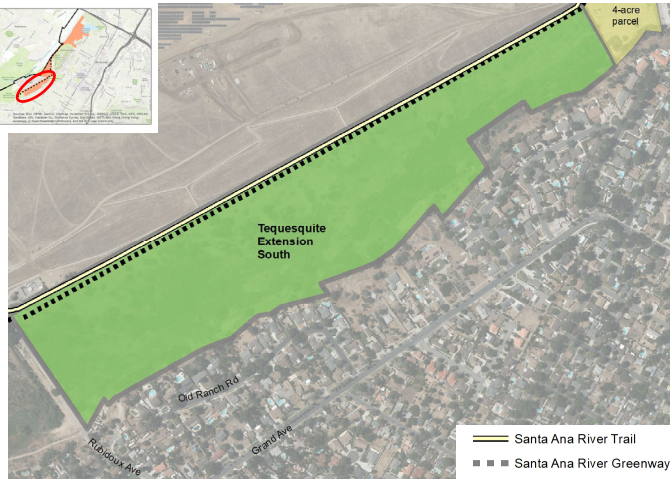


10

RiversideCA.gov

10

## TEQUESQUITE SOUTH EXTENSION - MASTER PLAN



### Potential Opportunities:

1. Habitat
2. Agriculture, small farm incubator
3. Educational/interpretive trails
4. Oak woodlands
5. Nature playground
6. Dog park – depending on community input
7. Horse stables with rentals and classes
8. Skate park



11

RiversideCA.gov

11

## MARTHA MCLEAN ANZA NARROWS PARK - RIVERSIDE GATEWAY MASTER PLAN



### Potential Opportunities:

1. River Gateway improvements
2. Circulation & vehicular control throughout park
3. Remove and relocate existing restroom
4. Santa Ana River Trail monument sign on Jurupa Ave
5. Landscape and irrigation refurbishment throughout park, California native plants
6. Recreational decomposed granite trail along park edge adjacent to existing paved Santa Ana River Trail

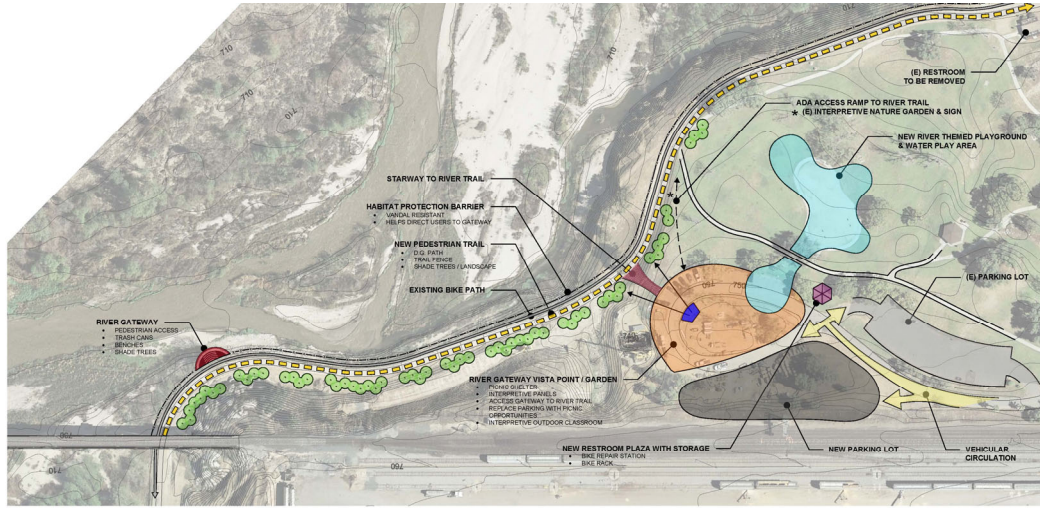


— Santa Ana River Trail  
 ■ ■ ■ Santa Ana River Greenway

RiversideCA.gov

12

# MARTHA MCLEAN ANZA NARROWS PARK - RIVER GATEWAY AREA PRELIMINARY CONCEPT

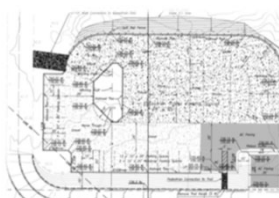


13

RiversideCA.gov

13

# JURUPA AVENUE TRAILHEAD



Trailhead Plan



Potential Opportunities:

1. Drinking water
2. Shady resting areas
3. Parking for cars and trailers
4. Equestrian facilities (water, hitching, etc.)
5. Bike lockers/racks (to encourage active transportation)
6. Bicycle repair station



14

RiversideCA.gov

14

## CONSULTANT SCOPE OF WORK

1. Community Outreach
2. Site Inventory and Analysis
3. Conceptual Designs and Master Plans
4. California Environmental Quality Act reviews and documents



15

RiversideCA.gov

15

## NEXT STEPS

Seek grant funding for:

1. Preparation of detailed design and construction documents; and
2. Construction



16

RiversideCA.gov

16



## POTENTIAL GRANTS

1. California Coastal Conservancy – Prop 68;
2. California State Parks –
  - a. Statewide Park Program
  - b. Land and Water Conservation Fund
  - c. Recreational Trails
  - d. Habitat Conservation Fund
3. California Natural Resources Agency –
  - a. Urban Greening
  - b. Urban Flood Protection



17

RiversideCA.gov

17

## RECOMMENDATIONS

That the City Council:

1. Approve a Professional Consultant Services Agreement with MLA Green, Inc. dba Studio-MLA of Los Angeles, California for the River-side Gateway Project Suite – Planning & Design for Park Master Plan and California Environmental Quality Act Services for Park, Trail and Greenway Improvements at Nine Sites through June 30, 2023 in the amount not to exceed \$1,963,681.79;



18

RiversideCA.gov

18

## RECOMMENDATIONS CONT'D

2. Authorize 10% change order authority in an amount up to \$196,368.00 for project changes including, but not limited to, unforeseen conditions or necessary work changes, for a total amount of exceed \$2,160,049.97; and,
3. Authorize the City Manager, or his designee, to execute the Professional Consultant Services Agreement with MLA Green, Inc. dba Studio-MLA including making minor and non-substantive changes.



19

RiversideCA.gov