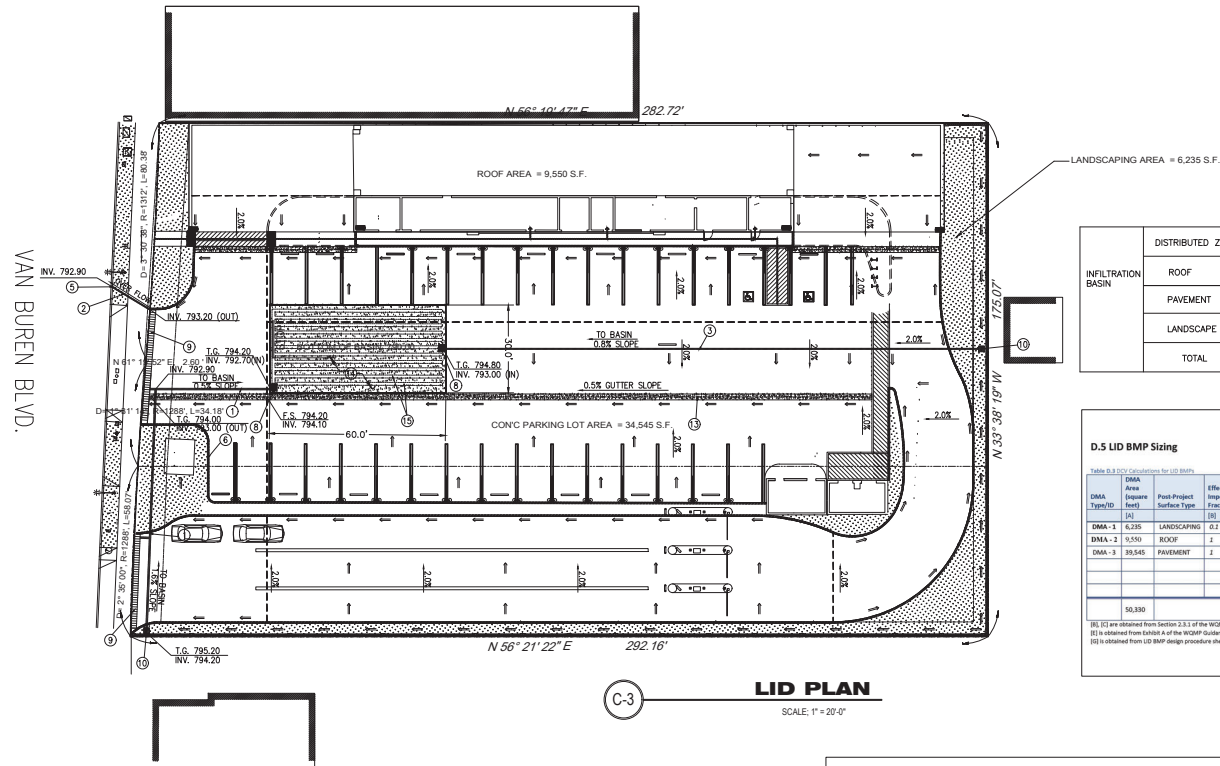


WQMP LID PLAN



INFILTRATION BASIN	DISTRIBUTED ZONE	DISTRIBUTED AREA(S.F.)		REQUIRED AREA (S.F.)	PROVIDED AREA (S.F.)	REQUIRED VOLUME (C.F.)	PROVIDED VOLUME (C.F.)
		IMPERVIOUS	PERVIOUS				
	ROOF	9,550					
	PAVEMENT	34,545					
	LANDSCAPE		6,235				
	TOTAL	50,330		1,699	1,800	2,039	2,160

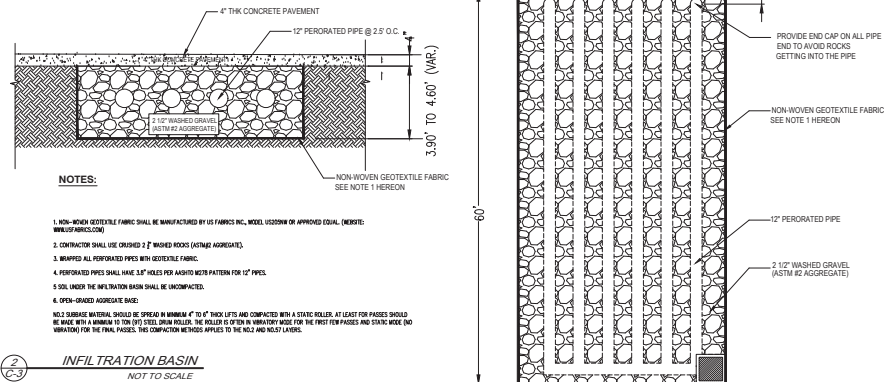
D.5 LID BMP Sizing

DMA Type/ID	DMA Area (Square Feet)	Post-Project Surface Type	Effective Impervious Fraction, %	DMA Runoff Factor	DMA Area * Runoff Factor	Enter BMP Name / Identifier Here
(A)	(B)	(C)	(D)	(E)	(F)	(G)
DMA-1	6,235	LANDSCAPING	0.1	0.22	688.7	
DMA-2	9,550	ROOF	1	0.89	8,518.5	
DMA-3	34,545	PAVEMENT	1	0.89	30,746.1	
	50,330				44,953.4	
					0.55	2,098.5
						2,160

BSI (C) are obtained from Section 3.3.3 of the WQMP Guidance Document
 (D) is obtained from Table 1 of the WQMP Guidance Document
 (E) is obtained from LID BMP design procedure sheet, placed in Appendix B

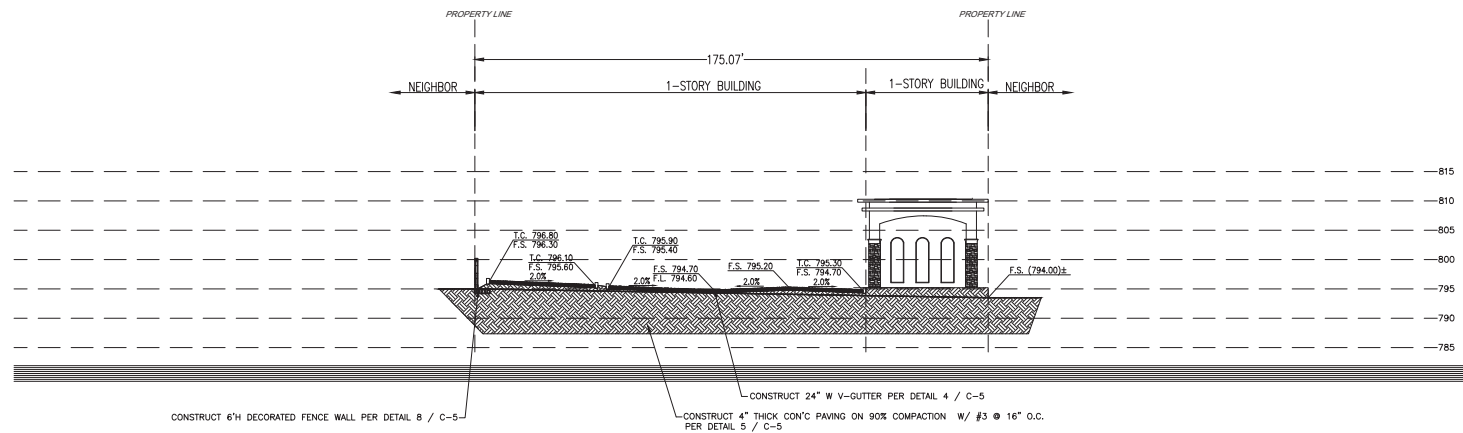
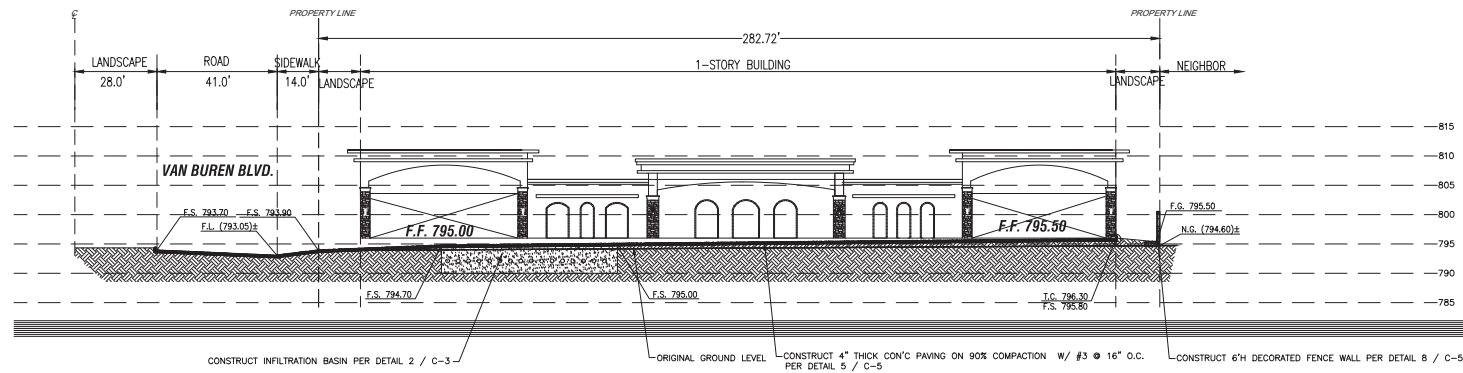
CONSTRUCTION NOTES:

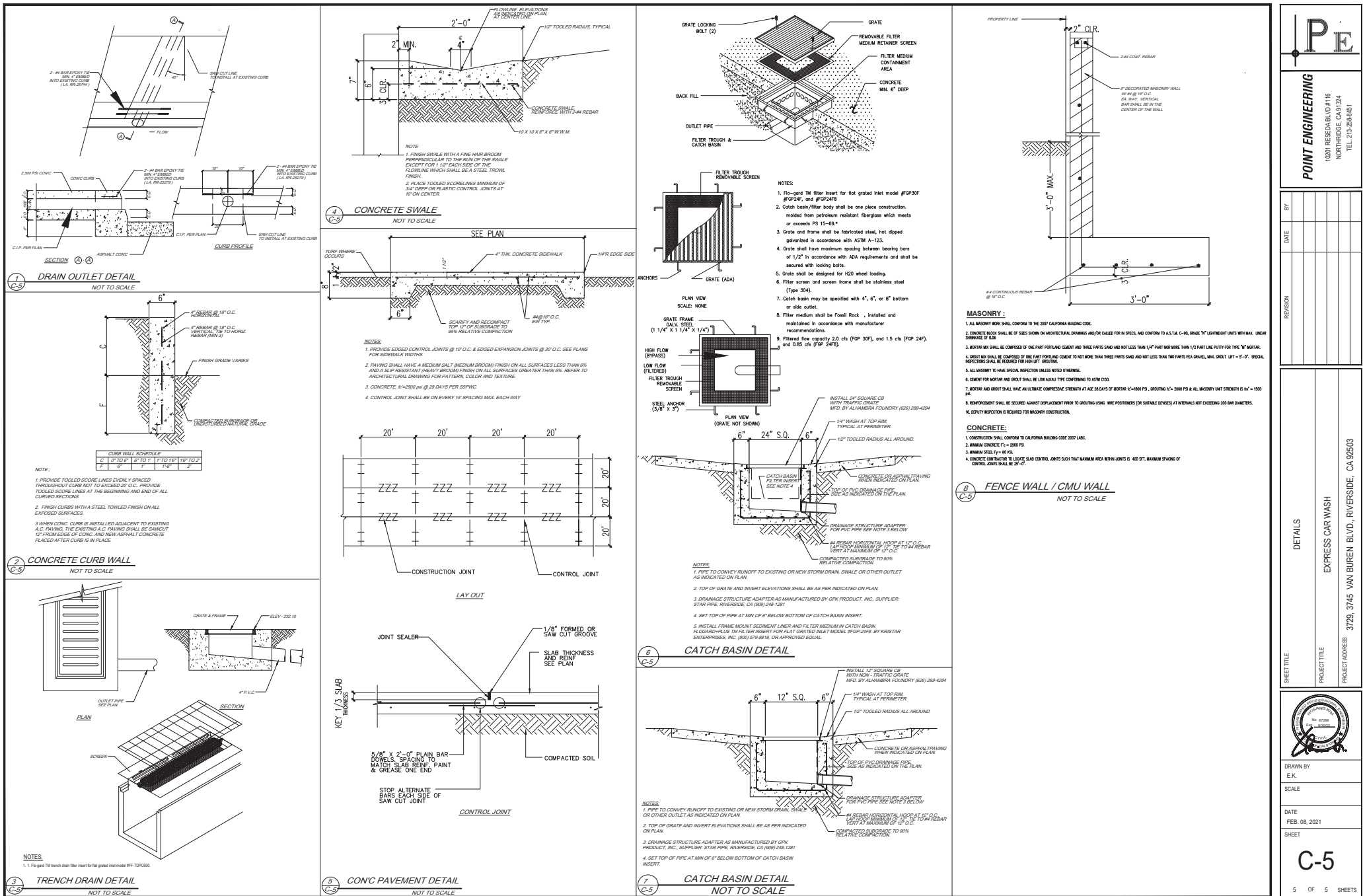
- ①—DRAINAGE PIPE 1-8" P.V.C. SCH40, UNLESS OTHERWISE NOTED
- ②—DRAINAGE PIPE 1-3" C.I.P. UNLESS OTHERWISE NOTED
- ③—DRAINAGE PIPE 1-3" P.V.C. UNLESS OTHERWISE NOTED
- ④—GRADE BREAK
- ⑤—CURB DRAIN PER DETAIL 1 / C-5
SEPARATE PERMIT IS REQUIRED
- ⑥—CONSTRUCT CONCRETE CURB WALL PER DETAIL 2 / C-5
- ⑦—ADA PATH OF TRAVEL, PARKING, AND DETAIL PER ARCHITECTURAL PLAN
- ⑧—CONSTRUCT 24" S.Q. CATCH BASIN W / FLO-GARD FGP 24F, 12" D.P. PER DETAIL 6 / C-5
- ⑨—CONSTRUCT TRENCH DRAIN W / FLO-GARD FF-TDPC 600 PER DETAIL 3 / C-5
- ⑩—CONSTRUCT 12" S.Q. CATCH BASIN W / FILTER PER DETAIL 7 / C-5
- ⑪—CONSTRUCT 4" THICK CONC PAVING ON 90% COMPACTION W / #3 @ 16" O.C. PER DETAIL 5 / C-5
- ⑫—CONSTRUCT 6H DECORATED FENCE WALL PER DETAIL 8 / C-5
- ⑬—CONSTRUCT 24" W V-GUTTER PER DETAIL 4 / C-5
- ⑭—CONSTRUCT INFILTRATION BASIN PER DETAIL 2 / C-3
- ⑮—DISTRIBUTION PIPE, 12" DIA PERFORATED PVC SCHEDULE 40
- ⑯—ROOF DOWNSPOUT PER ARCHITECTURAL PLAN
- ⑰—NEW LANDSCAPING PER LANDSCAPING PLAN
- ⑱—3" OVER-EXCAVATION (REMOVE AND RE-COMPACTION) 90% OF MAXIMUM DENSITY
- ⑲—PAY STATION PER ARCHITECTURAL PLAN
- ⑳—NEW TRASH ENCLOSURE PER ARCHITECTURAL PLAN



REVISION	DATE	BY







P20-0476 (CUP), P20-0477 (DR) - Exhibit 6B - Project Plans