

## UPPER SANTA ANA RIVER HABITAT CONSERVATION PLAN AND RIVERSIDE HABITAT, PARKS, AND WATER PROJECT

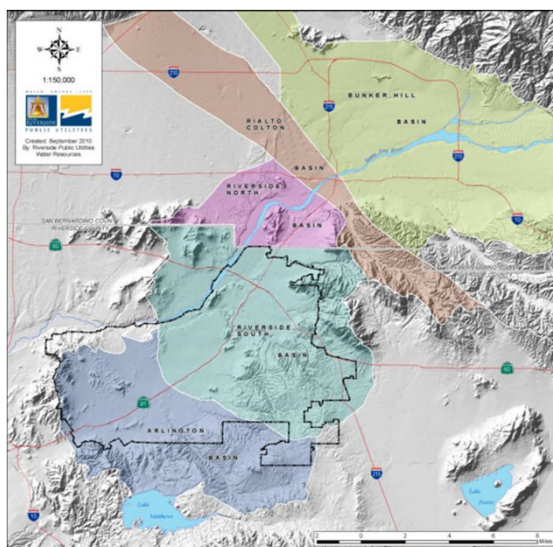
Board of Public Utilities  
May 24, 2021

RiversidePublicUtilities.com



1

## RIVERSIDE EXPORT WATER RIGHTS



### Extraction/Export Rights

Bunker Hill	
• 55,263 AFY Export	64%
Colton	
• 2,728 AFY Export	3%
Riverside North	
• 10,902 AFY Export	13%
Riverside South	
• 16,880 AFY Extraction	20%

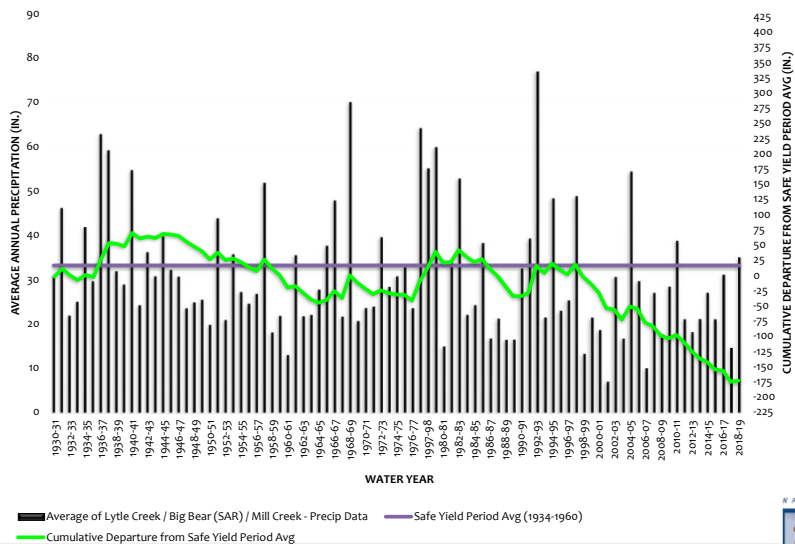
**85,774 AFY Total**

RiversidePublicUtilities.com



2

# LOCAL PRECIPITATION

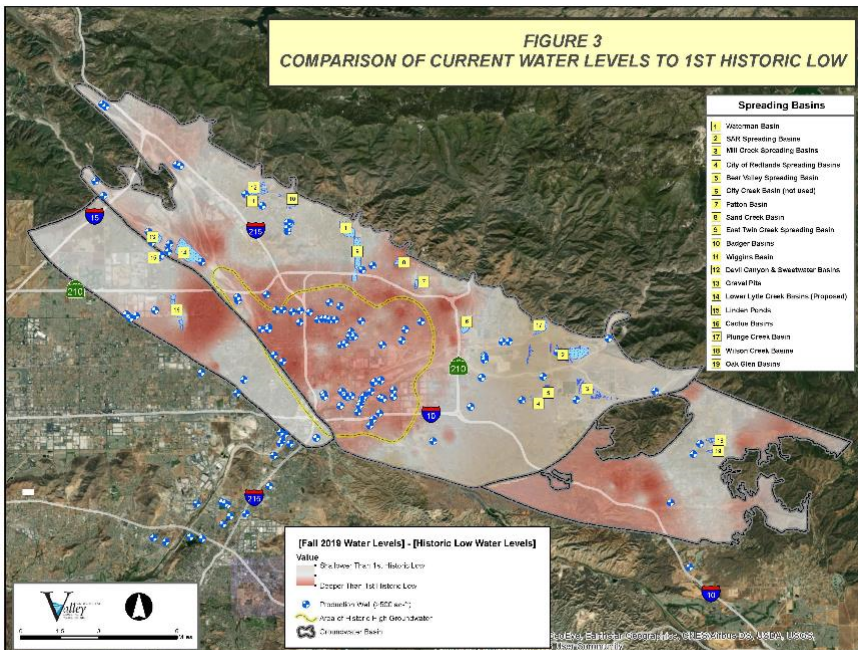


RiversidePublicUtilities.com

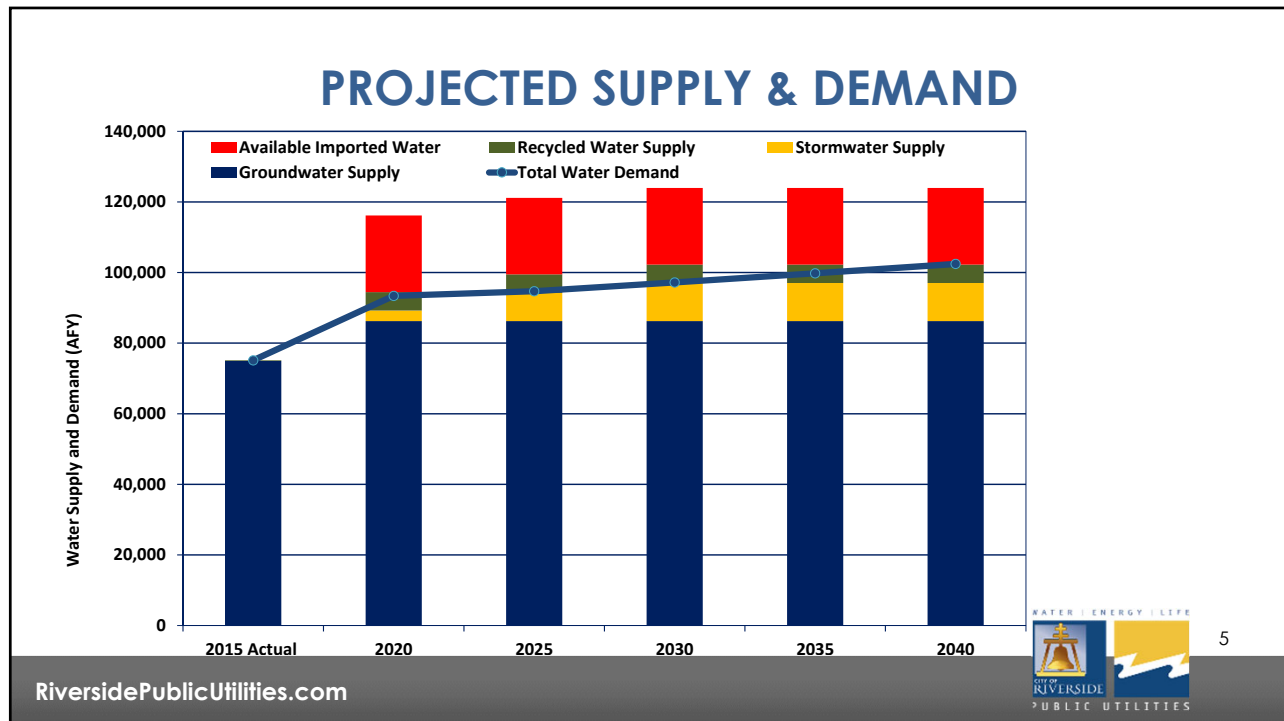


3

FIGURE 3  
COMPARISON OF CURRENT WATER LEVELS TO 1ST HISTORIC LOW



4



5

## WATER SUPPLY - RECHARGE

1. MWD 2022 Tier 2 cost \$1,146 per AF
2. Enhanced Recharge at Seven Oaks Dam
  - a. Phase 1A – 1,719 AFY
  - b. Phase 1B & 1C (in progress) – 711 AFY, \$12M or \$1,100/AF
3. Active Recharge (planning in progress)
  - a. Up to 8,047 AFY, minimum est. capital \$50M or \$400/AF
4. Rubber Dam (planning in progress)
  - a. Up to 2,000 AFY, \$16.7M or \$540/AF
5. Riverside Basin (planning in progress)
  - a. Up to 2,440 AFY, \$21.3M or \$570/AF

RiversidePublicUtilities.com



6

1. North Waterman Treatment Plant (remove perchlorate)
2. Pipeline replacements (including under river crossings)
3. Well Replacements
4. Property Site Management
5. Energy efficiencies / Solar



## SINGLE, LARGEST PROJECT CHALLENGE

1. Environmental Issues
2. Listed (Endangered or Threatened) species and/or their habitat have halted or significantly slowed water supply development and maintenance projects
  - a. Enhanced Recharge at Seven Oaks Dam
  - b. Active Recharge
  - c. Rubber Dam
3. RPU-specific projects where environmental challenges occur:
  - a. Select well replacements
  - b. Pipeline replacements at river crossings
  - c. Property maintenance
  - d. RPU's share of regional water supply projects



9

RiversidePublicUtilities.com

## LOCAL SPECIES & HABITAT CONCERNS

1. **Santa Ana sucker**, threatened (2000), Critical Habitat (2010)
  - a. Impacts to water supply within Santa Ana River
2. **San Bernardino Kangaroo Rat**, endangered (1998), Critical Habitat (2008), State listing in progress
  - a. Impacts to RPU and Gage property
3. **Santa Ana River Woollystar**, endangered (1987)
  - a. Impacts to RPU and Gage property
4. **Southwestern willow flycatcher**, endangered (1995), Critical Habitat (2013)
  - a. Impacts to RPU and Gage property
5. **Riversidian Alluvial Fan Sage Scrub (RAFSS)**
  - a. Key habitat type continually shrinking with time
  - b. Found on RPU and Gage property



RiversidePublicUtilities.com

## UPPER SANTA ANA RIVER HCP

1. A Habitat Conservation Plan (HCP) is a planning document required for incidental take of a listed species and identifies the take and how to mitigate the take and improve the species occurrence
2. Water Agencies working with Wildlife Agencies to promote and mitigate impacts to endangered species while enabling construction of new water supply projects on a regional scale.
3. Proposed mitigation efforts
  - a. Protect minimum flow needs for species
  - b. Improve, expand, create & manage habitat
  - c. Relocate species
  - d. Maintain & adaptively manage a mitigation bank
4. 50-year term permit



11

RiversidePublicUtilities.com

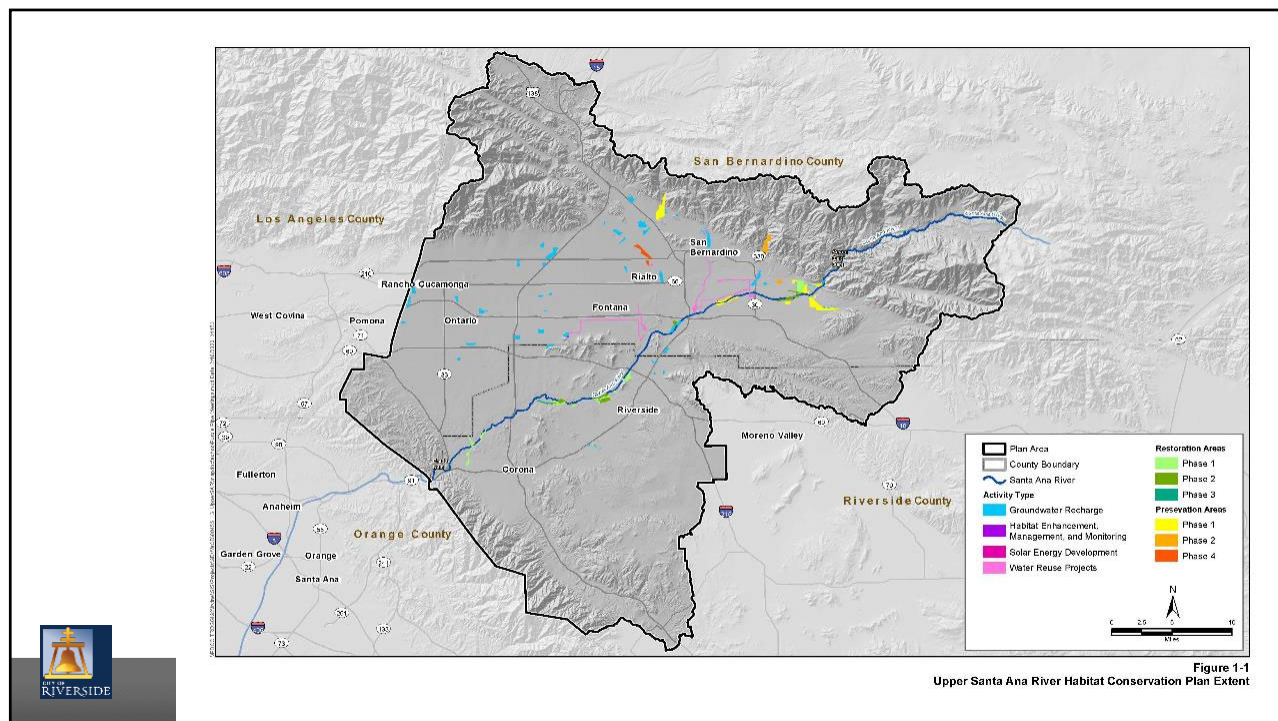
## HCP FUNDING AGENCIES

1. Funding Partners (% derived from activities covered in HCP)
  - a. City of Rialto (2%)
  - b. East Valley Water District (7%)
  - c. Inland Empire Utility Agency (20%)
  - d. Metropolitan Water District of Southern California (2%)
  - e. Orange County Water District (1%)
  - f. Riverside Public Utilities (5%)
  - g. San Bernardino Valley Municipal Water District (40%)
  - h. San Bernardino Valley Water Conservation District (3%)
  - i. San Bernardino Municipal Water Department (5%)
  - j. West Valley Water District (1%)
  - k. Western Municipal Water District (15%)
2. Incidental take will be covered for 23 species
3. 65 Covered Activities
  - a. New Water Supply, Enhanced Water Capture, Maintenance
4. 87,000 AFY on average of water supply covered in the HCP



12

RiversidePublicUtilities.com



## HCP STRUCTURE

1. Joint Incidental Take Permit (USFWS)
  - a. Operate collectively under one permit, but each agency responsible for own project
  - b. Other necessary permits will be streamlined in coordination with the HCP: CDFW & USACE
2. Governed by a Joint Power Authority (JPA)
  - a. JPA made up of 1 elected official from each agency
  - b. HCP Executive Committee composed of GMs to act as liaison between the JPA and Permittee Agencies
  - c. An Agency may withdraw however must make the HCP whole for any costs incurred
3. Pay-as-you-go Structure
  - a. Pay mitigation costs once ready to implement Covered Activity
4. Total Implementation Costs - \$187.5M (over 50-years)
  - a. Capital Costs - \$71M
  - b. Operational Costs - \$116.5M
5. RPU's proposed JPA Operational costs - \$200,000 / year

## RPU'S COVERED ACTIVITIES

- |   |  |
|---|--|
| 1. Riverside North Aquifer Storage & Recovery Project | 8. Waterman Pipeline Upsizing Project            |
| 2. Riverside Basin Recharge Project                   | 9. Flume & Riverside Canal Pipeline Replacements |
| 3. Bunker Hill Groundwater Basin Wells & Pipelines    | 10. Future Gage Canal Transmission Main          |
| 4. RPU / Upper SAR Regional Recycled Water Project    | 11. Weed Abatement & Property Maintenance        |
| 5. North Waterman Treatment Plant                     | 12. Facilities Maintenance                       |
| 6. Various RPU Solar Projects                         | 13. Jurupa Ditch Company                         |
| 7. Gage Canal Transmission Main Replacement           | 14. Pipeline crossing from RIX                   |

- RPU is also a partner on Enhanced & Active Recharge Projects

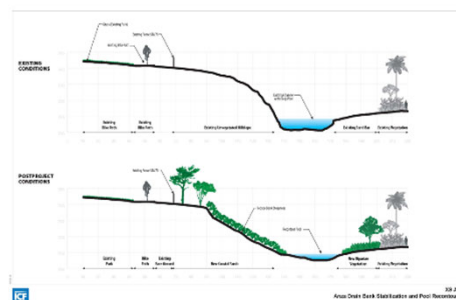
RiversidePublicUtilities.com



15

## MITIGATION EFFORTS

1. Mitigation Bank (located in Riverside)
  - a. Tributaries (\$4 million prop 84 funding)
    - i. Improvements to Hole & Anza Creeks
    - ii. Creating Old Ranch & Hidden Valley Creeks
  - b. Upland habitat
  - c. Hidden Valley Wetlands
  - d. Lake Evans Creek area
2. Land Management
  - a. Protect and manage habitat & land
3. Fish Translocation
4. Improving Species Occurrence



16

RiversidePublicUtilities.com

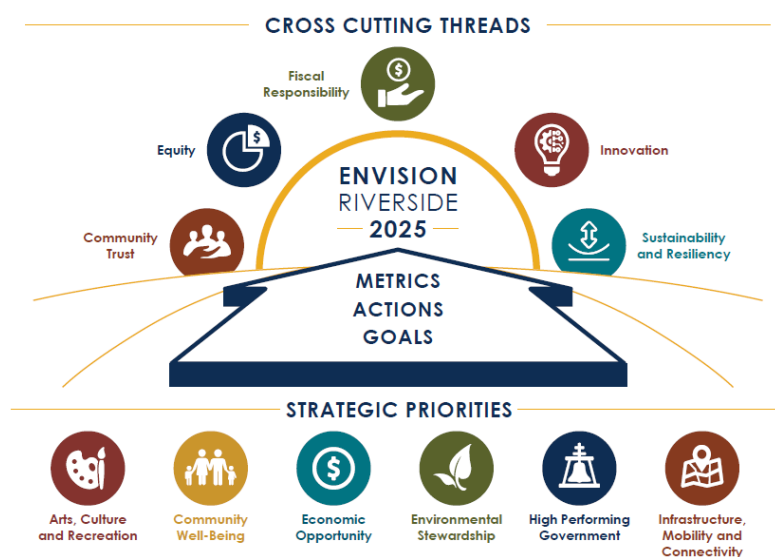


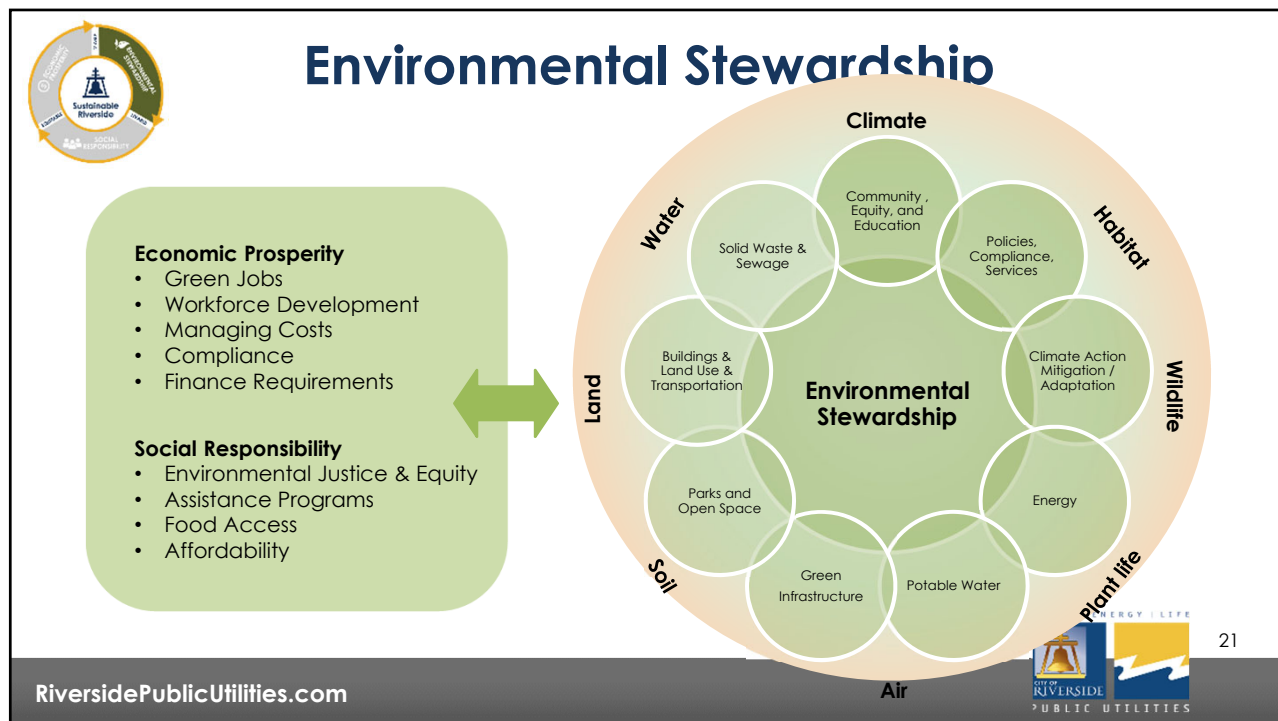


## RIVERSIDE'S EXISTING DISCHARGE OBLIGATIONS

1. 1969 Santa Ana River Judgment
  - a. Agreement with Western to discharge
2. 2008 Wastewater Change of Use Petition (WW-0045)
  - a. Committed additional 9,750 AFY for environmental purposes
3. Propose to modify environmental commitment, relocating water to tributaries and removing a portion for recycled use
4. Ultimately Riverside would continue discharging its Western commitment plus commit 5,000 AFY to river tributaries

## Riverside 2025 Strategic Plan





## RHPWP BENEFITS

1. One Water
2. Water reuse on regional, integrated scale
3. Habitat creation, improvement & sustainability
4. Landscape irrigation of large spaces including parks
5. Improved water quality
6. Integrated with HCP public outreach and education components
7. Resilient water supply



## HCP, RIVERSIDE BENEFITS

1. Mitigate Water Supply and Infrastructure projects
  - a. Obtain necessary environmental permits enabling new water supply projects and supporting maintenance activities
  - b. Supports up to 15,000 AFY of new water to Riverside over the next 50 years
2. Riverside Habitat, Parks & Water Project
3. Restoration
  - a. Tributary creation and restoration in Riverside
  - b. Hidden Valley Wetlands revitalization and management
4. Management
  - a. Protect & manage habitat over the next 50 years
  - b. Integration with Parks & Rec (hiking trails, viewing centers, interpretive signage)
5. Fairmount Park
  - a. \$2 million Prop 1 grant
  - b. Lake Evans Creek



23

RiversidePublicUtilities.com

## STATUS

1. Upper Santa Ana River HCP
  - a. Draft EIR released in coming month(s)
  - b. Tributary restoration efforts, fall 2021
    - i. Property discussion with City Departments, 2021
  - c. JPA consideration late 2021 / 2022
2. Riverside Habitat, Parks and Water Project
  1. Complete planning reports, 2021
  2. Cost share agreement – Environmental & Design, 2021



24

RiversidePublicUtilities.com



## RECOMMENDATIONS

That the Riverside Public Utilities Board receive this update on the Upper Santa Ana River Habitat Conservation Plan and the Riverside Habitat, Parks, and Water Project.