

## OPERATIONAL DATA MANAGEMENT SYSTEM PROJECT UPDATE AND 5-YEAR EXTENSION OF ENTERPRISE AGREEMENT WITH OSISOFT, LLC.

### Riverside Public Utilities

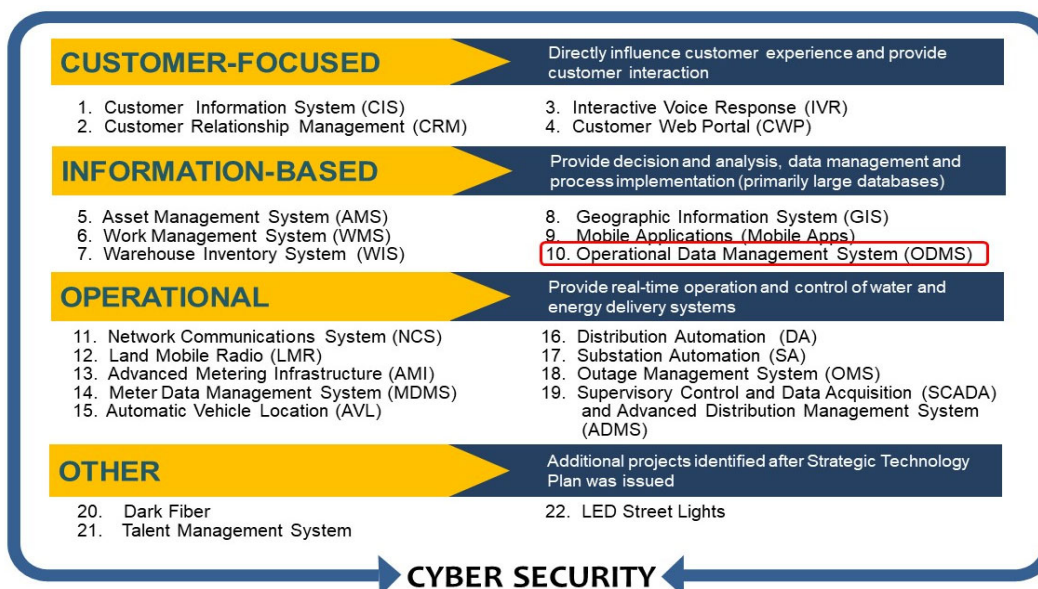
Board of Public Utilities  
June 14, 2021

RiversidePublicUtilities.com



1

## BACKGROUND – STRATEGIC TECHNOLOGY PLAN



2

## BACKGROUND

1. All divisions within RPU rely on data to make operational and fiscal decisions
2. Thousands of data points are collected daily
3. RPU recognized need to move away from storing data in various formats and disparate systems
4. In response to need, Board of Public Utilities approved OSIsoft Pi System to serve as ODMS for entire utility (April 2016)

## WHAT IS THE OSI PI SYSTEM?

1. Serves as a “data hub” or central data repository
2. Integrates previously nonintegrated data from disparate systems
3. Provides an enhanced analytics platform that utility can leverage to improve operational performance

## WHAT IS THE OSI PI SYSTEM? (Cont'd)

### 4. Allows managers and staff to:

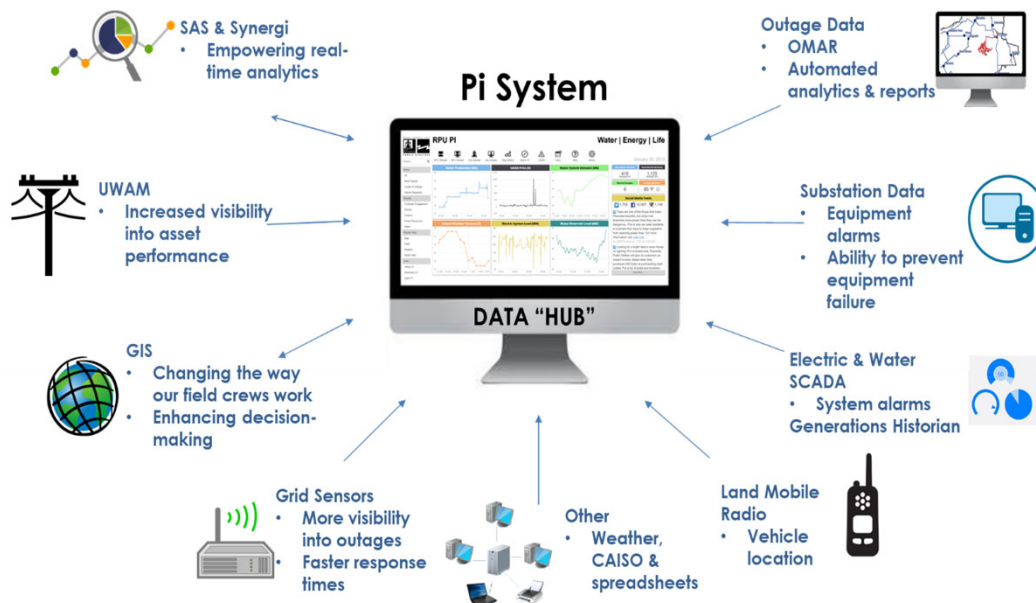
- Collect, analyze, visualize and share large amounts of historical, real-time, and time series operational data
- Manage and share large amounts of data across multiple systems and workgroups
- Transform data into meaningful information through dashboards and reports to drive critical business decisions

RiversidePublicUtilities.com



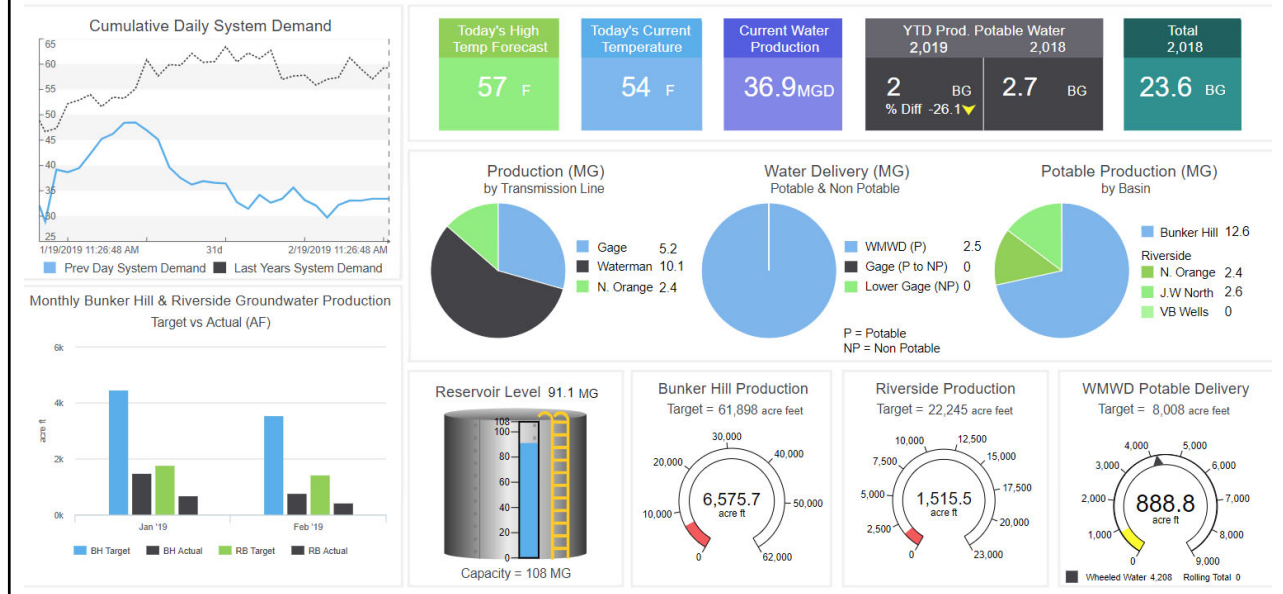
5

## PI SYSTEM – DATA HUB



6

## PI DASHBOARD EXAMPLE



## RETURN ON INVESTMENT (ROI)

1. As of last report to Board (6/10/19), RPU had achieved an ROI of over \$673,000 per year
2. Since then, RPU has achieved an additional ROI of over \$640,000 per year
3. Total combined annual ROI is now over \$1.3M per year
4. This far surpasses annual enterprise service cost of OSI Pi system

## IMPLEMENTATION COST

1. RPU has invested \$4,907,000 into implementing and deploying the Pi System, which includes:
  - a. Hardware and software
  - b. OSIsoft enterprise license and services agreement
    - i. Annual services fee averaged \$298,210 per year through July 2021
  - c. City IT labor to support back-end implementation
  - d. Professional contract services as "extension-of-staff"

## FISCAL IMPACT

1. Staff is requesting renewal of the enterprise agreement with OSIsoft for an additional 5-year term, through August 14, 2026.
2. Average annual cost for the new 5-year term is \$242,466 per year, for a total of \$1,212,333, which includes:
  - a. Software licensing
  - b. Services/technical support
  - c. Learning and event vouchers

## FUTURE DEVELOPMENT

RPU plans to continue developing and expanding the use of the Pi system for additional operational benefits, efficiencies, and ROI including:

1. New dashboards and reports using the data from existing integrations
2. New integrations as new operational systems are procured
3. Integration with enQuesta Customer Information System
4. Integration with Advanced Meter Infrastructure / Meter Data Management System

## RECOMMENDATION

That the Board of Public Utilities:

1. Approve an Amendment to the Enterprise Program Agreement with OSIsoft, LLC., for PI software license and services to extend the term through August 14, 2026 in the amount of \$1,212,333; and
2. Authorize the City Manager, or his designee, to execute the Amendment with OSIsoft, LLC, including making minor and non-substantive changes.