



River-side Gateway Park Project Suite Update

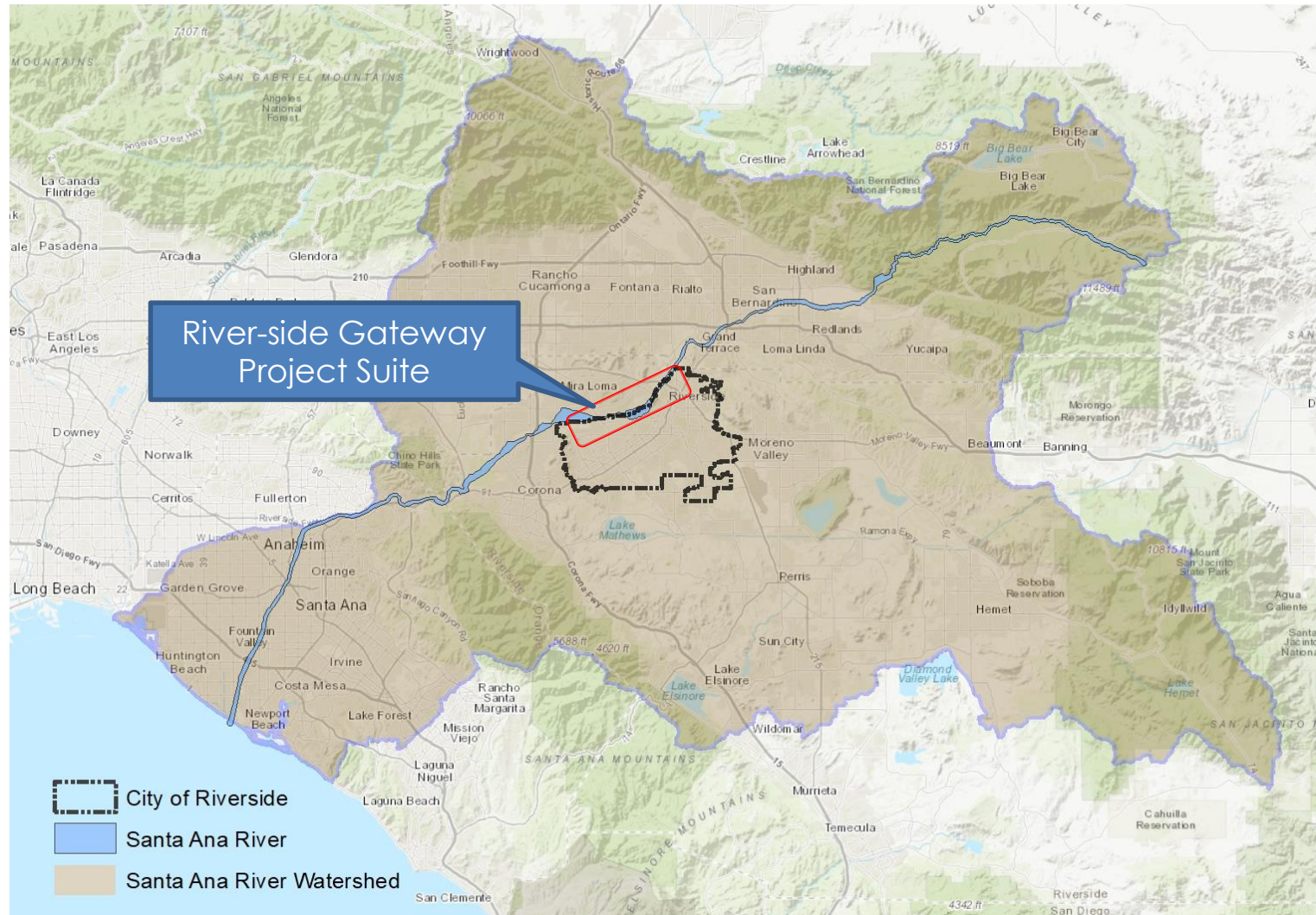
**Parks, Recreation and Community Services
Department**

Park and Recreation Commission
July 19, 2021

BACKGROUND

1. 2003 and 2009 - Santa Ana River Task Force recommends improvements to parks and open spaces along the Santa Ana River;
2. 2014, the Santa Ana River Conservancy was formed;
3. 2019 Submission of California Coastal Conservancy Grant for \$2,358,000;
4. 2019 – 2020 Grant received, and agreement executed; and,
5. 2021 Contract awarded to conduct community outreach, prepare master plans, and conduct California Environmental Quality Act project reviews for 9 park and recreation sites along the river, and to acquire a 4-acre parcel.

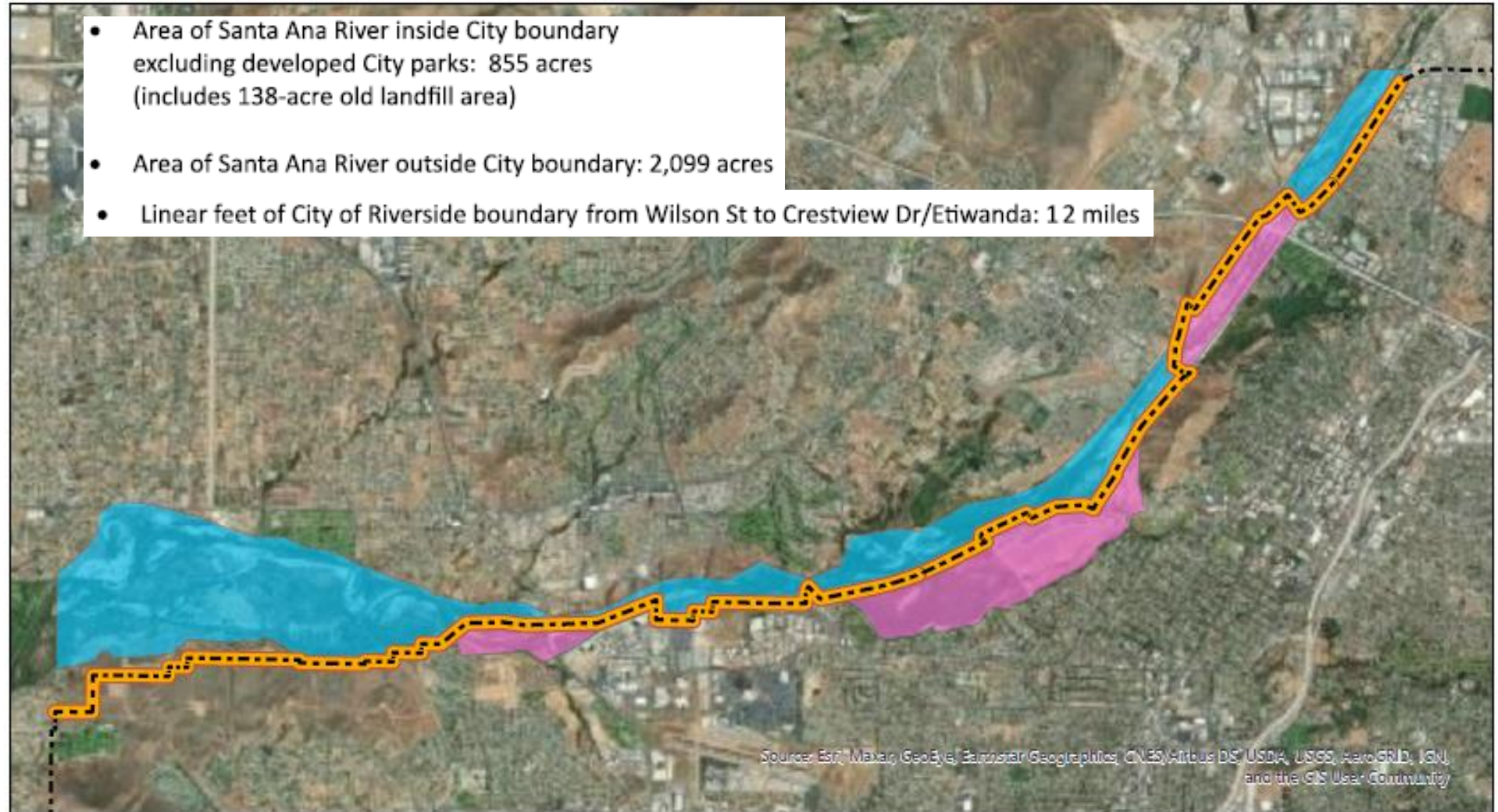
RIVER-SIDE GATEWAY PROJECT SUITE



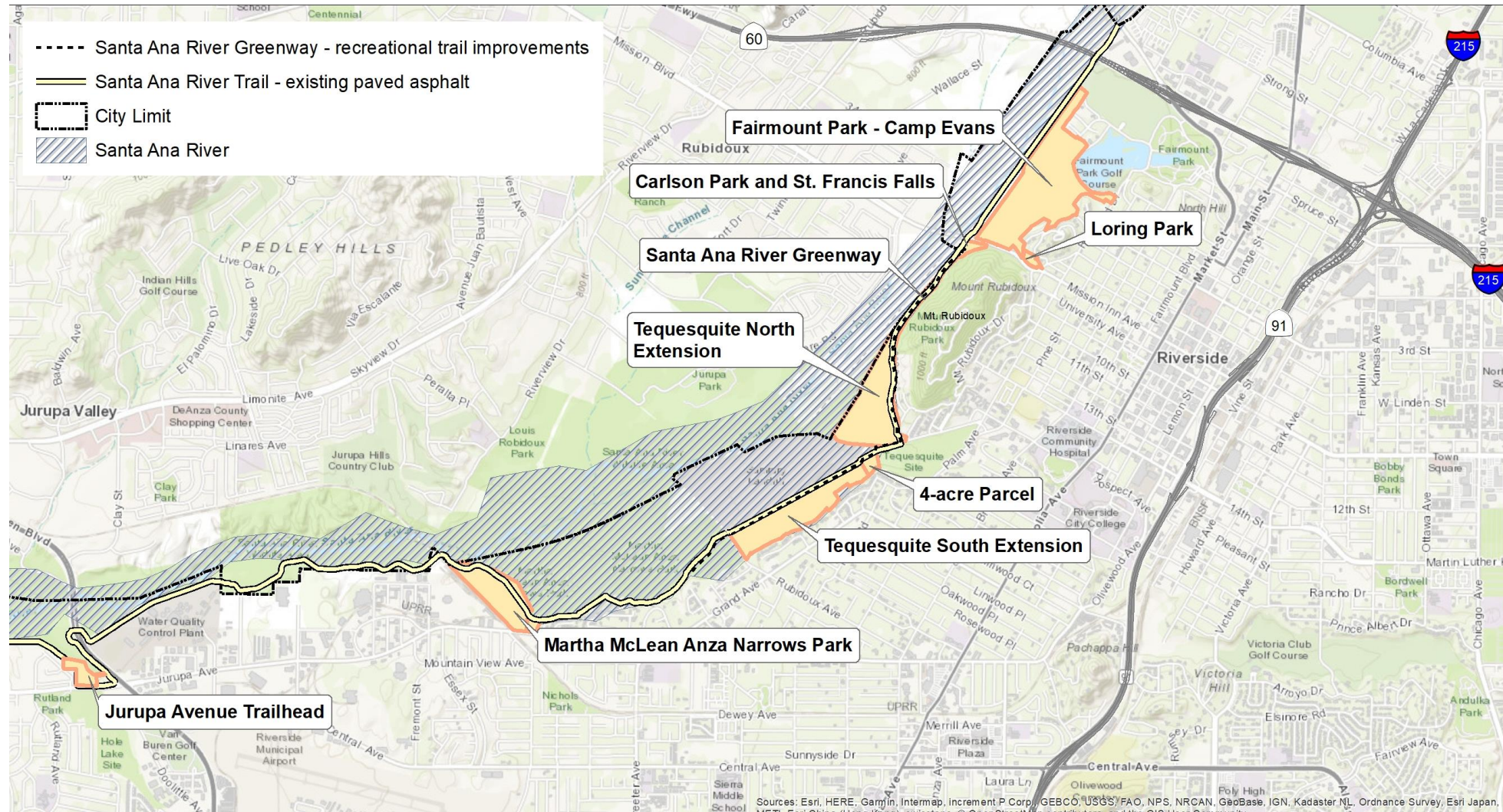
RIVER-SIDE GATEWAY PROJECT SUITE

- Inside City Of Riverside
- Outside City Of Riverside
- City of Riverside
- City boundary adjacent to river

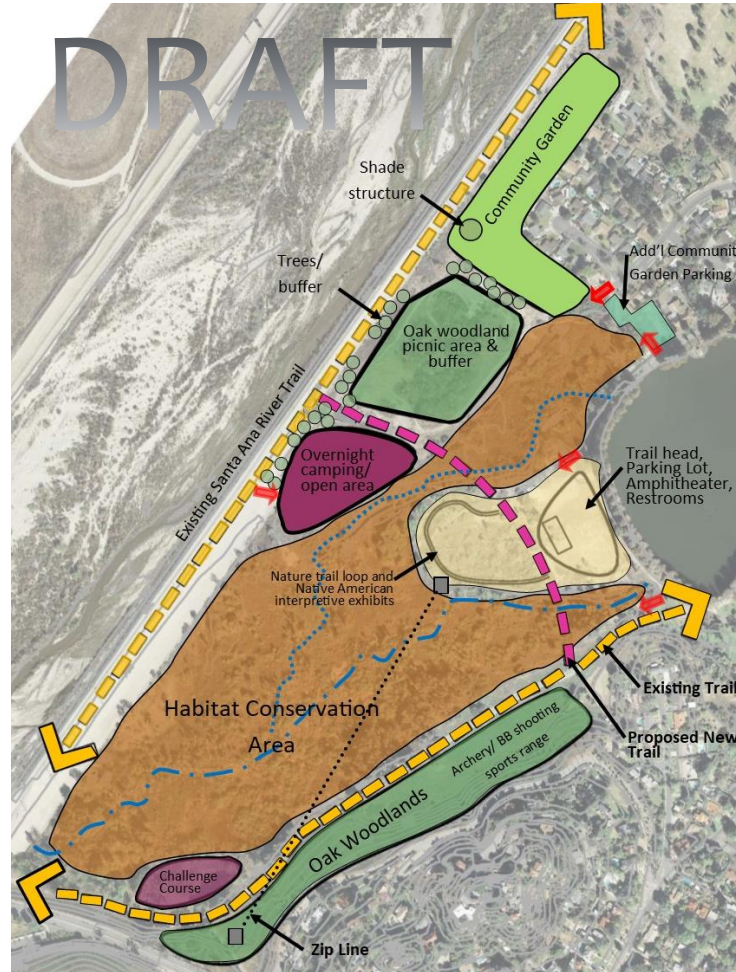
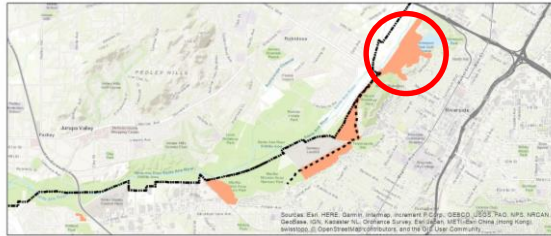
- Area of Santa Ana River inside City boundary excluding developed City parks: 855 acres (includes 138-acre old landfill area)
- Area of Santa Ana River outside City boundary: 2,099 acres
- Linear feet of City of Riverside boundary from Wilson St to Crestview Dr/Etiwanda: 12 miles



RIVER-SIDE GATEWAY PROJECT SUITE



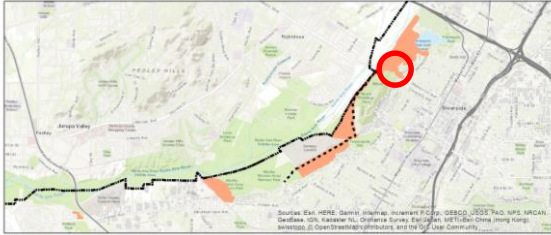
FAIRMOUNT PARK - CAMP EVANS MASTER PLAN



Potential Opportunities:

1. Habitat conservation area
2. Oak woodlands
3. Trailhead parking lot
4. Small amphitheater
5. Restrooms
6. Nature/cultural interpretive trail
7. Challenge course
8. Zip line
9. Camping area
10. Picnic area
11. Community garden
12. Archery/BB shooting sports range
13. Improved Fire Dept. access

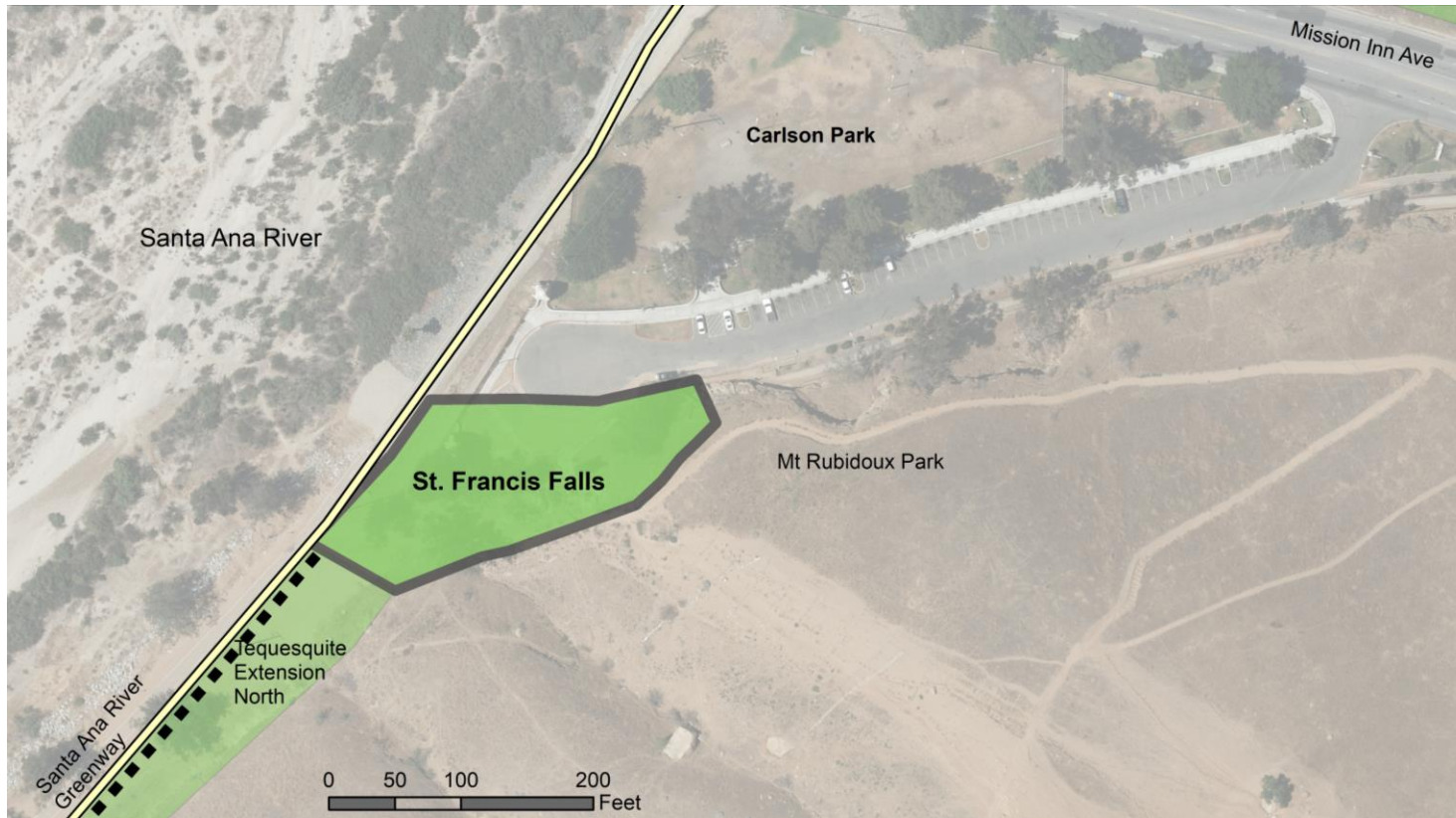
LORING PARK - MASTER PLAN



Potential Opportunities:

1. Walking trails
2. Stairs – connect to Camp Evans and SART
3. Vista point
4. Landscape and irrigation
5. Parkour/exercise stations
6. Public art

CARLSON PARK – ST. FRANCIS FALLS RESTORATION



- Santa Ana River Trail
- ■ ■ Santa Ana River Greenway



Potential Opportunities:

1. Public art competition to receive proposals to renovate historic water feature to use lights or other artistic method to simulate running water
2. Re-install the historic neon sign
3. Trailhead amenities

SANTA ANA RIVER GREENWAY – RECREATIONAL TRAIL IMPROVEMENTS

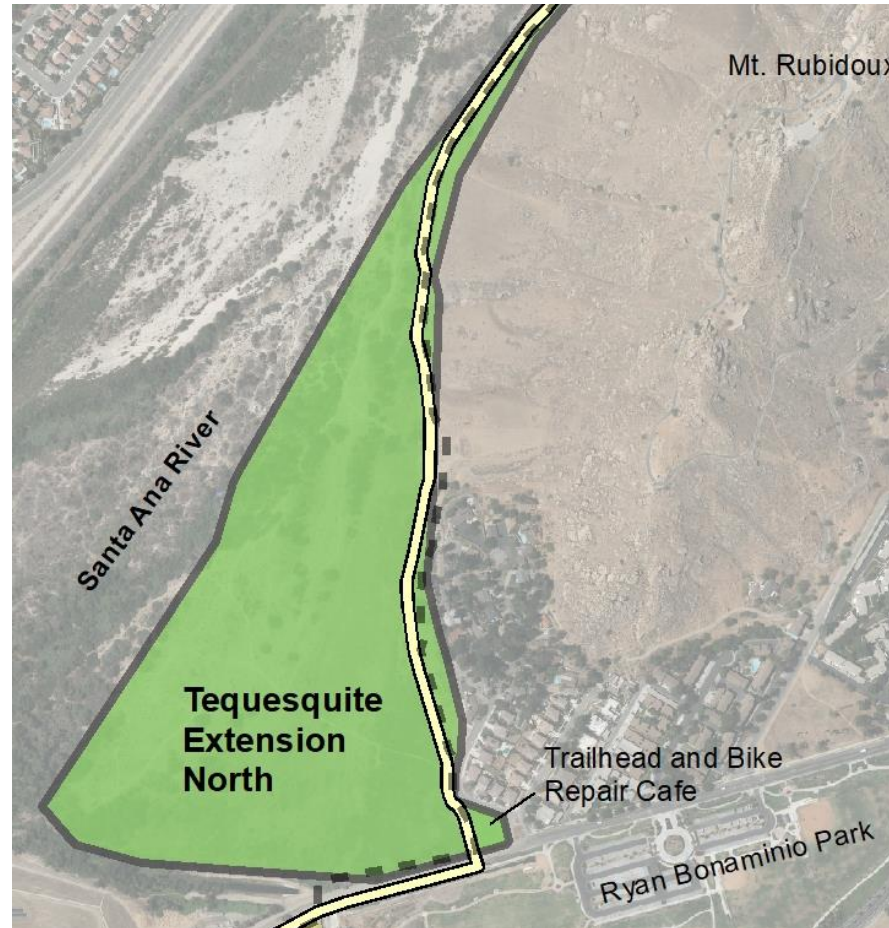


Potential Opportunities:

1. Add decomposed granite trail parallel to existing paved asphalt trail to separate slower pedestrian traffic
2. Trees, landscaping, irrigation
3. Lighting
4. Signage
5. Emergency phones
6. Drinking fountains
7. Seating/rest areas

■ ■ ■ Santa Ana River Greenway Recreational Trail Improvements
— Santa Ana River Trail

TEQUESQUITE NORTH EXTENSION - MASTER PLAN AND TRAILHEAD IMPROVEMENTS

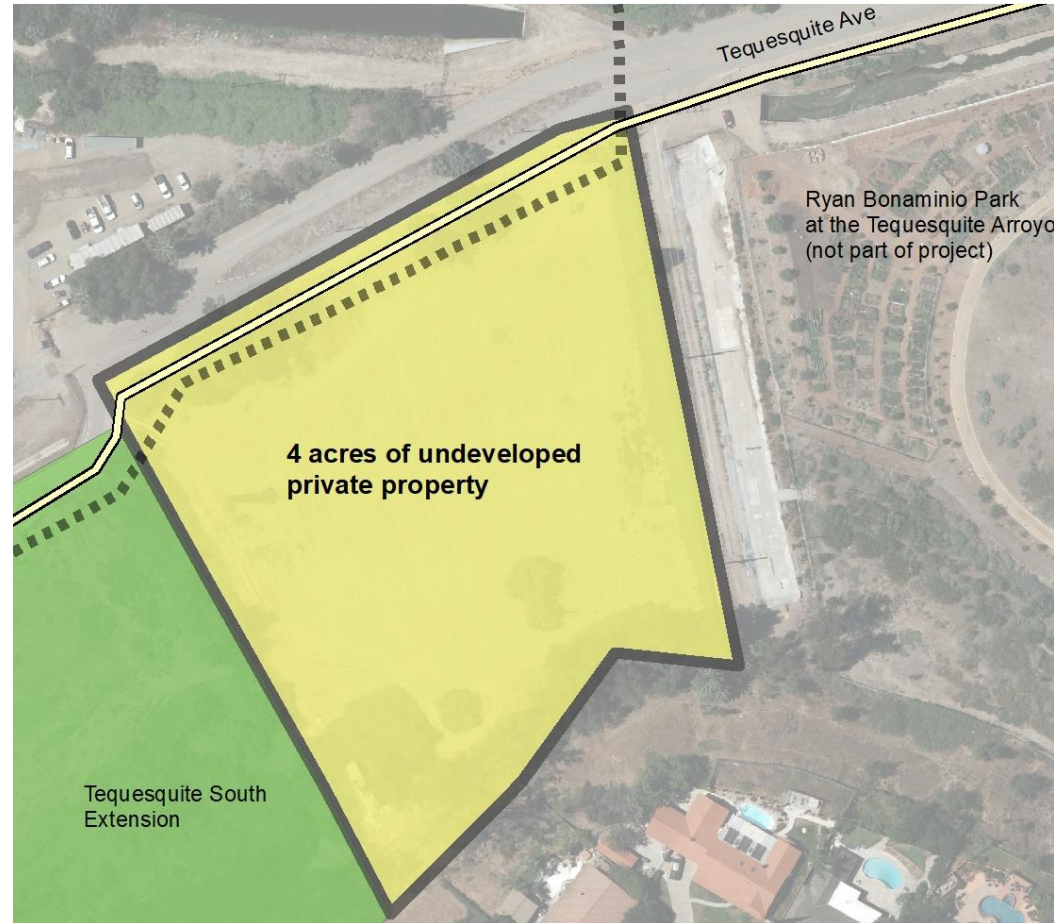


Potential Opportunities:

1. Habitat
2. Native plant interpretive garden
3. SART trailhead with signage, rest area, drinking fountain
4. Bike repair café
5. Educational/interpretive trails
6. Lighting
7. Vehicle access control to block unauthorized access to river bottom

— Santa Ana River Trail
■ ■ ■ Santa Ana River Greenway

PRIVATE PROPERTY PURCHASE – 4 ACRES

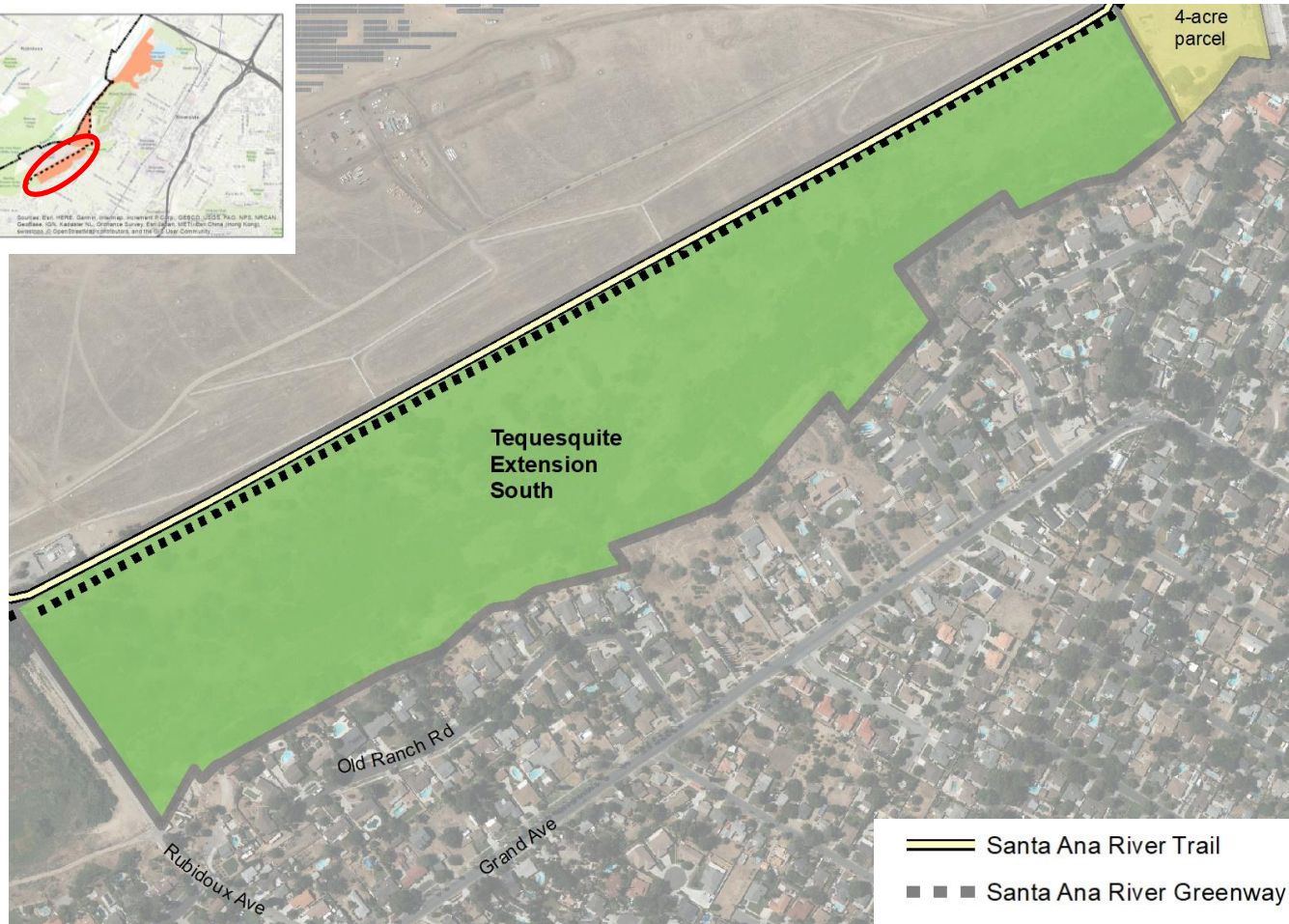


Potential Opportunities:

1. Acquisition
2. Dog park
3. Skate park
4. Community garden expansion, agriculture

— Santa Ana River Trail
■ ■ ■ Santa Ana River Greenway

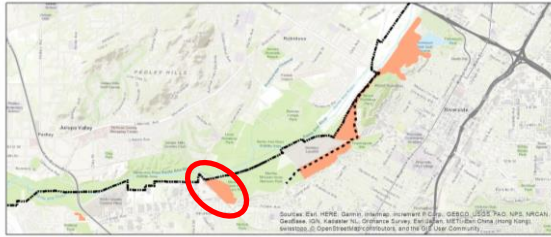
TEQUESQUITE SOUTH EXTENSION - MASTER PLAN



Potential Opportunities:

1. Habitat
2. Agriculture, small farm incubator
3. Educational/interpretive trails
4. Oak woodlands
5. Nature playground
6. Dog park – depending on community input
7. Horse stables with rentals and classes
8. Skate park

MARTHA MCLEAN ANZA NARROWS PARK - RIVERSIDE GATEWAY MASTER PLAN



— Santa Ana River Trail
■ ■ ■ Santa Ana River Gateway

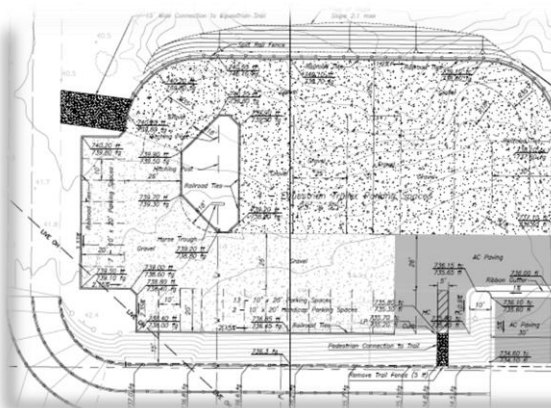
Potential Opportunities:

1. River Gateway improvements
2. Circulation & vehicular control throughout park
3. Remove and relocate existing restroom
4. Santa Ana River Trail monument sign on Jurupa Ave
5. Landscape and irrigation refurbishment throughout park, California native plants
6. Recreational decomposed granite trail along park edge adjacent to existing paved Santa Ana River Trail

MARTHA MCLEAN ANZA NARROWS PARK - RIVER GATEWAY AREA PRELIMINARY CONCEPT



JURUPA AVENUE TRAILHEAD



Trailhead Plan



— Santa Ana River Trail

Potential Opportunities:

1. Drinking water
2. Shady resting areas
3. Parking for cars and trailers
4. Equestrian facilities (water, hitching, etc.)
5. Bike lockers/racks (to encourage active transportation)
6. Bicycle repair station

CONSULTANT SCOPE OF WORK

1. Community Outreach
2. Site Inventory and Analysis
3. Conceptual Designs and Master Plans
4. California Environmental Quality Act reviews and documents

NEXT STEPS

Seek grant funding for:

1. Preparation of detailed design and construction documents, and
2. Construction

POTENTIAL GRANTS

1. California Coastal Conservancy – Prop 68;
2. California State Parks –
 - a. Statewide Park Program
 - b. Land and Water Conservation Fund
 - c. Recreational Trails
 - d. Habitat Conservation Fund
3. California Natural Resources Agency –
 - a. Urban Greening
 - b. Urban Flood Protection

RECOMMENDATIONS

That the Park and Recreation Commission provides feedback and receive the report for file.