



# **GAGE CANAL MULTIPURPOSE TRAIL MASTER PLAN**

---

**Parks, Recreation and Community Services  
Department**

Park and Recreation Commission  
July 19, 2021

DRAFT MASTER PLAN

# Gage Canal Multi-Purpose Trail

PHASE 1

## City of Riverside Parks, Recreation and Community Services Department

JULY 2021  
PREPARED BY ALTA PLANNING + DESIGN  
IN ASSOCIATION WITH  
RINCON CONSULTANTS  
DIAZ YOURMAN & ASSOCIATES  
COAST SURVEYING INC



# PROJECT OVERVIEW

## BACKGROUND

- Funded by California Natural Resources Agency (CNRA) Urban Greening Grant
- Approximately 2 miles in length between Palmyrita Ave and Blaine street

## PROJECT GOALS

- Plant 700 trees: application documents indicate an estimated net GHG benefit of 868 MT CO<sub>2</sub>
- Construct asphalt concrete-paved multi-use path and natural surface trail in parallel
- Install solar lighting along the length of the project corridor
- Create unique access points with pedestrian and bicyclist amenities
- Install crossing enhancements where the trail will cross existing roadways





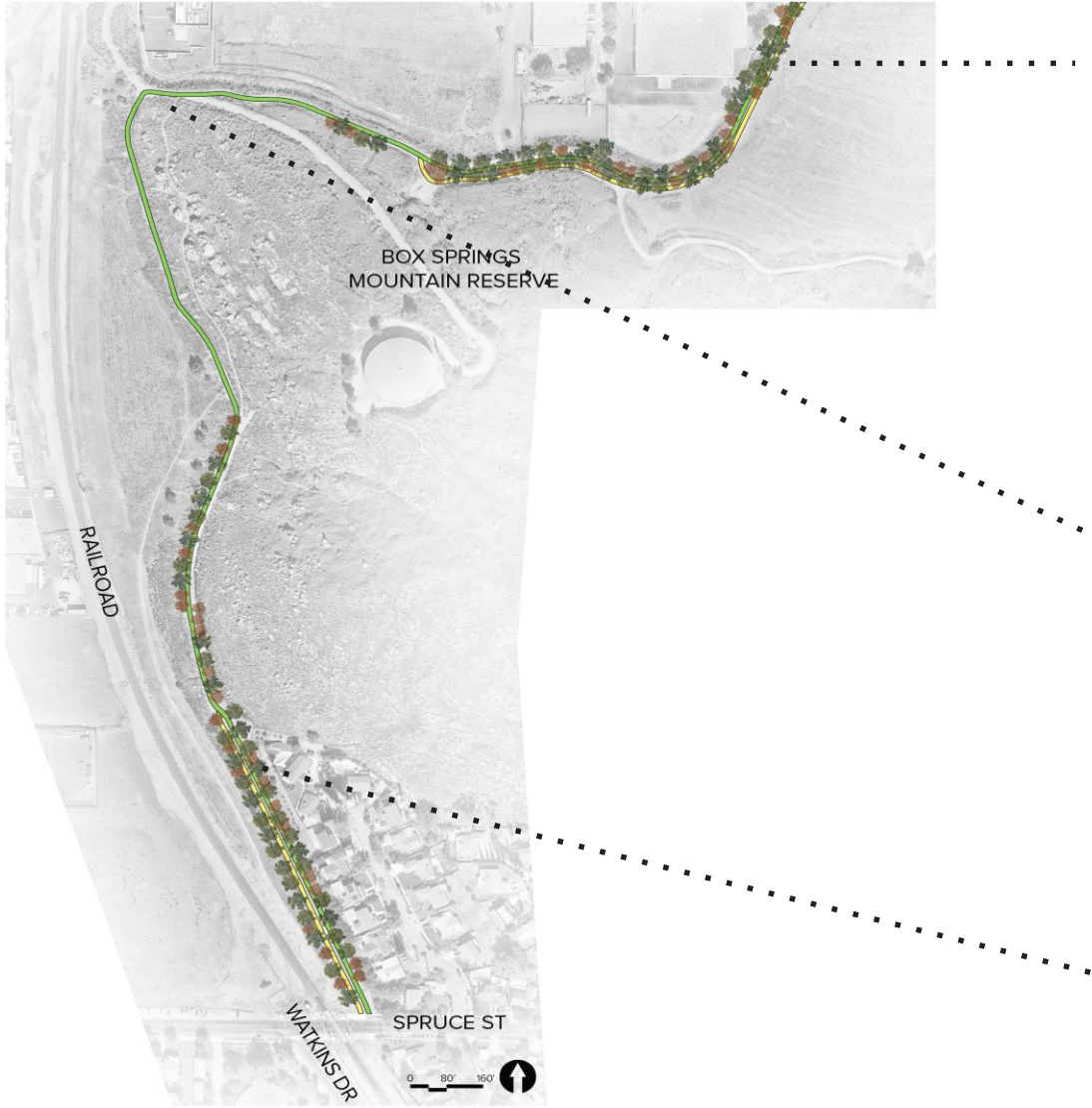
# EXISTING CONDITIONS UPDATE

## Gage Canal Trail - RESIDENTIAL SECTION



# EXISTING CONDITIONS UPDATE

## Gage Canal Trail - BOX SPRINGS SECTION





# EXISTING CONDITIONS UPDATE

## Gage Canal Trail - INDUSTRIAL SECTION



# OUTREACH

## Survey - OVER 500 RESPONSES

### Physical:

- 500 Mailers distributed to residents within ¼ mile of the project area
- 10 yard signs at Trail entries and key locations
- Project flyers distributed in AUSD student take-home packages

### Digital:

- City of Riverside and PRCSD Facebook
- City of Riverside and PRCSD Instagram
- PRCSD website post
- Press Enterprise Newspaper website
- UC Riverside Highlander Newspaper website
- Riverside Unified School District parent notices via PeachJar, and inclusion in Principal's newsletters
- Alvord Unified School parent notices via PeachJar



# OUTREACH

## Survey - OVER 500 RESPONSES

### Q1. What is your zip code?

92506	34% / 186 respondents; Canyon Crest, Victoria, Magnolia Center
92507	17% / 92 respondents; University, Eastside, Highgrove
92504	12% / 65 respondents; Alessandro Heights, Casa Blanca, Hawarden Hills

### Q2. Do you currently use the Gage Canal for recreation or commuting?

Yes	73% / 399 respondents
No	27% / 145 respondents

### Q3. Which best describes how you use the Trail?

Walking, Jogging, or Running	79% / 310 respondents
Riding a Bike	37% / 145 respondents
Dog Walking	33% / 131 respondents

### Q4. How often do you visit the Gage Canal?

A Few Times a Month	29% / 152 respondents
A Few Days a Week	24% / 127 respondents
A Few Times a Year	24% / 124 respondents





# OUTREACH

## Survey - OVER 500 RESPONSES

### Q5. When you think about how you use the Canal today, or how you might use it in the future, what types of trips do you think you would use it for?

Exercising	87% / 447 respondents
Being in Nature	79% / 408 respondents
Visiting the California State Citrus Historic Park	43% / 221 respondents

### Q6. If you don't use the existing portions of the Gage Canal Trail, what would encourage you to use it more?

More Connections to Nature	57% / 280 respondents
Increased Safety and Security	52% / 256 respondents
More connections to Destinations	45% / 219 respondents
Improved Trail Surface	43% / 212 respondents

### Q7. What types of improvements would you most like to see on the Gage Canal?

Trash Cans / Pet Waste Stations	61% / 307 respondents
Shade / Trees	59% / 297 respondents
Lighting / Safety	50% / 250 respondents

### Q8. Is there anything else you'd like our project team to consider?

Maintain natural surface of trail / do not pave / preserve nature
Address homeless encampments / improve perceptions of safety
Provide amenities such as restrooms, equestrian facilities, lighting, and crossings



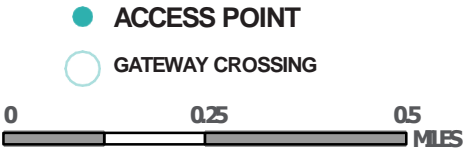
# CONCEPT PLANS

## THREE DESIGN ZONES

Residential Zone  
from Blaine Street to Watkins Drive

Box Springs Zone  
from Spruce Street to Marlborough Road

Industrial Zone  
from Marlborough Road to Palmyrita Avenue



# CONCEPT PLANS

## ACCESS CONTROL STRATEGIES

### SPLITTER ISLAND

- Swing gate
- Separate Pedestrian/Bicyclist Entry



### SWING GATE + BOLLARDS

- Swing gate
- Bollard
- Multi-use Path Striping



### CHICANE

- Swing gate
- Separate Pedestrian/Bicyclist Entry



### SWING GATE + BARRIERS

- Greatest level of entry control
- Swing gate
- Fence
- Bollard
- Multi-use Path Striping







# CONCEPT PLANS

## LANDSCAPE

The concept as presented includes 702 trees which capture a total of 702.5 tons of CO2.

**IRREGULAR &  
REPEATING**



**REGULAR &  
REPEATING**



**ALTERNATING  
FORM**





# CONCEPT PLANS

## STORMWATER

### VEGETATION INFILTRATION TRENCH



### BIOSWALE



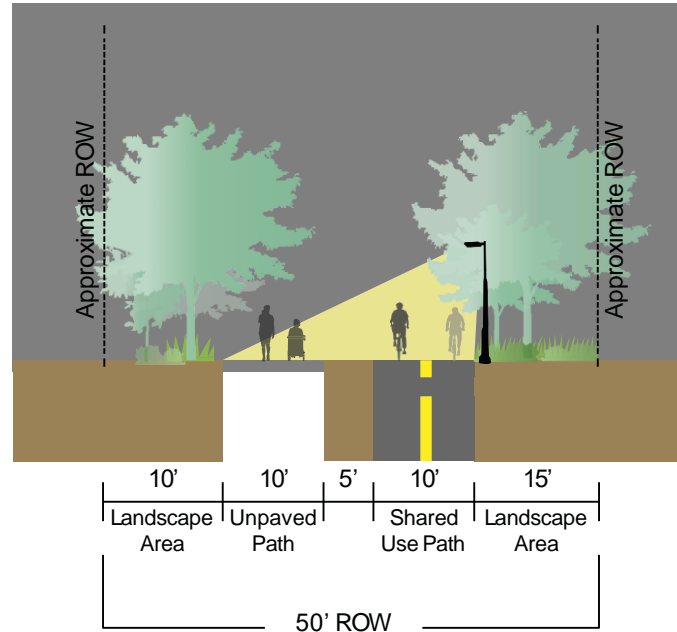


# CONCEPT PLANS

## LIGHTING

### First Light SCL2 Series:

- Pole Mounted Solar Lights
- Dark-sky compliant fixtures
- Will include timers, sensors, and remote-control technology
- Pedestrian Scale



# CONCEPT PLANS

## ZONE 1: Residential

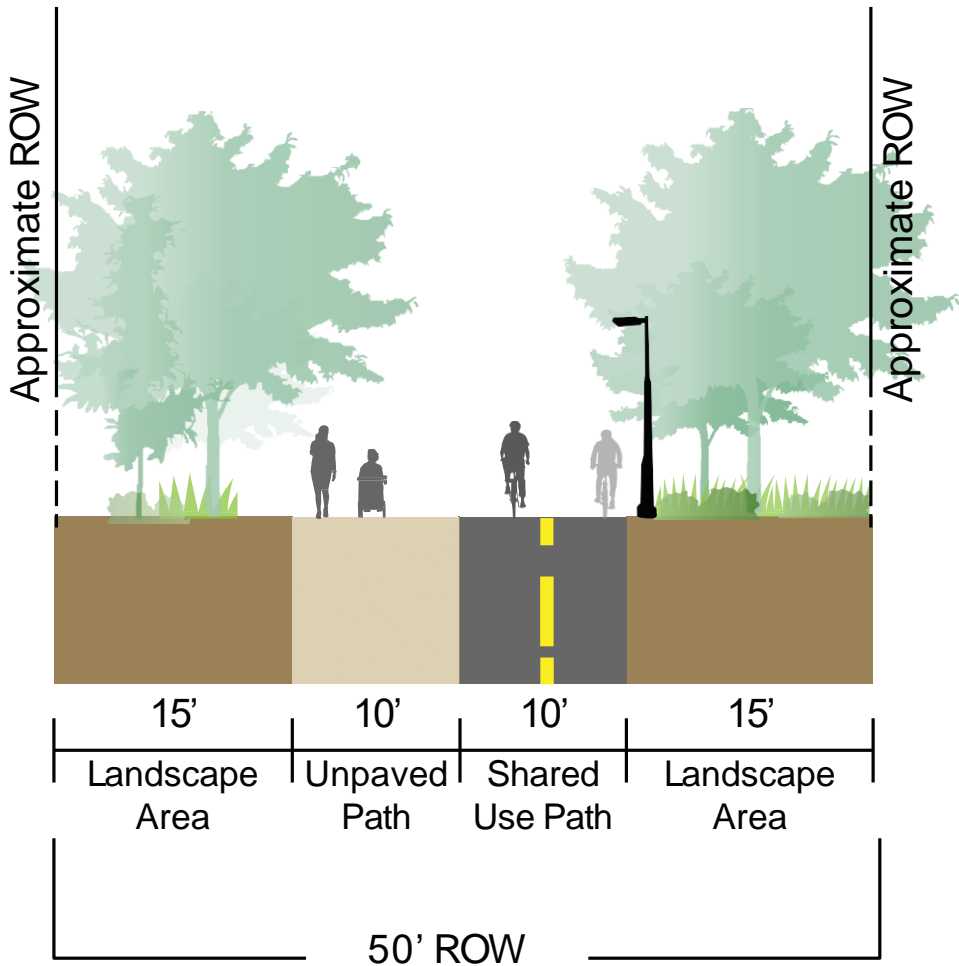


Trail concept rendering located between Blaine Street and Watkins Drive looking north



Key Map

## TYPICAL SECTION DETAIL



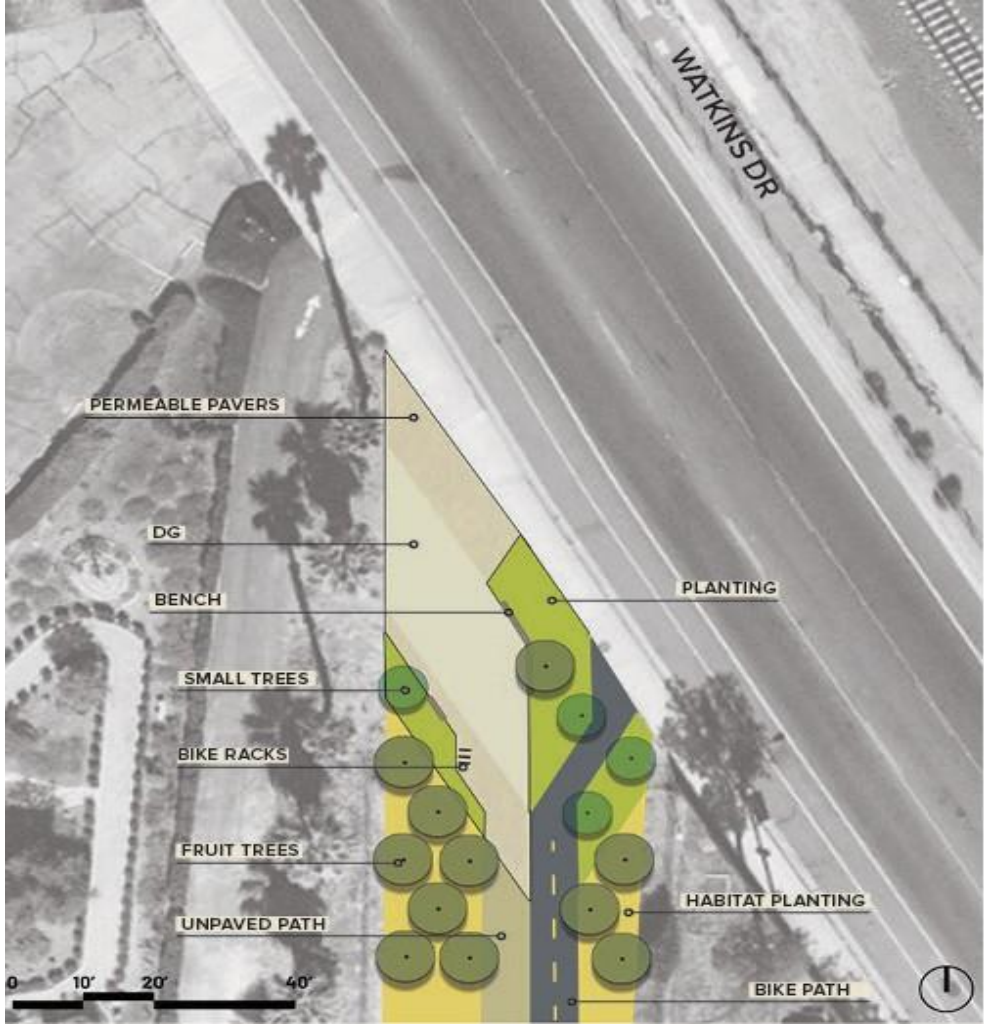


# CONCEPT PLANS

## ZONE 1: Residential

CONCEPTUAL GATEWAY DESIGN- PLAN VIEW

The trail gateway design depicted is located at the trail corridor intersection on Watkins Drive.



Trail gateway concept rendering located at Watkins Drive looking south





# CONCEPT PLANS

## ZONE 1: Residential

### LANDSCAPE: URBAN ORCHARD



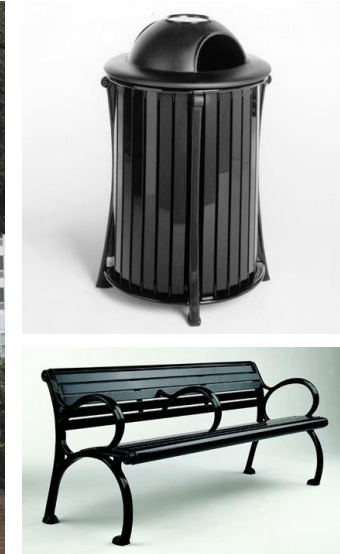
- Agricultural History
- Appropriate for Trailhead/Gateways
- Most applicable to Residential Section
- Potential Partnerships for Tending Trees

### LIGHTING



- Reduce light pollution for neighboring residents
- Fixtures should be used to direct all illumination down towards the trail surface
- 0.2-0.5 foot-candles

### AMENITIES



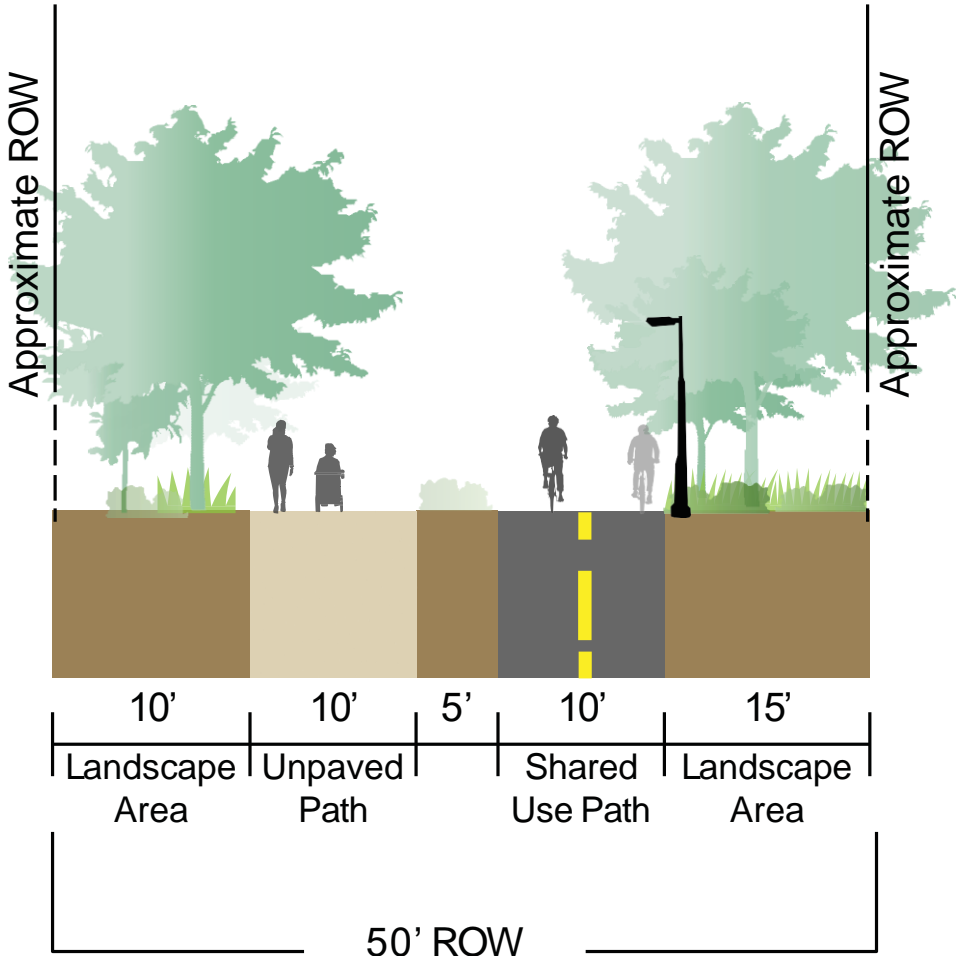
- Seating
- Water Fountains
- Trash Receptacles
- Bicycle parking

# CONCEPT PLANS

## ZONE 2 : Box Springs



## TYPICAL SECTION DETAIL



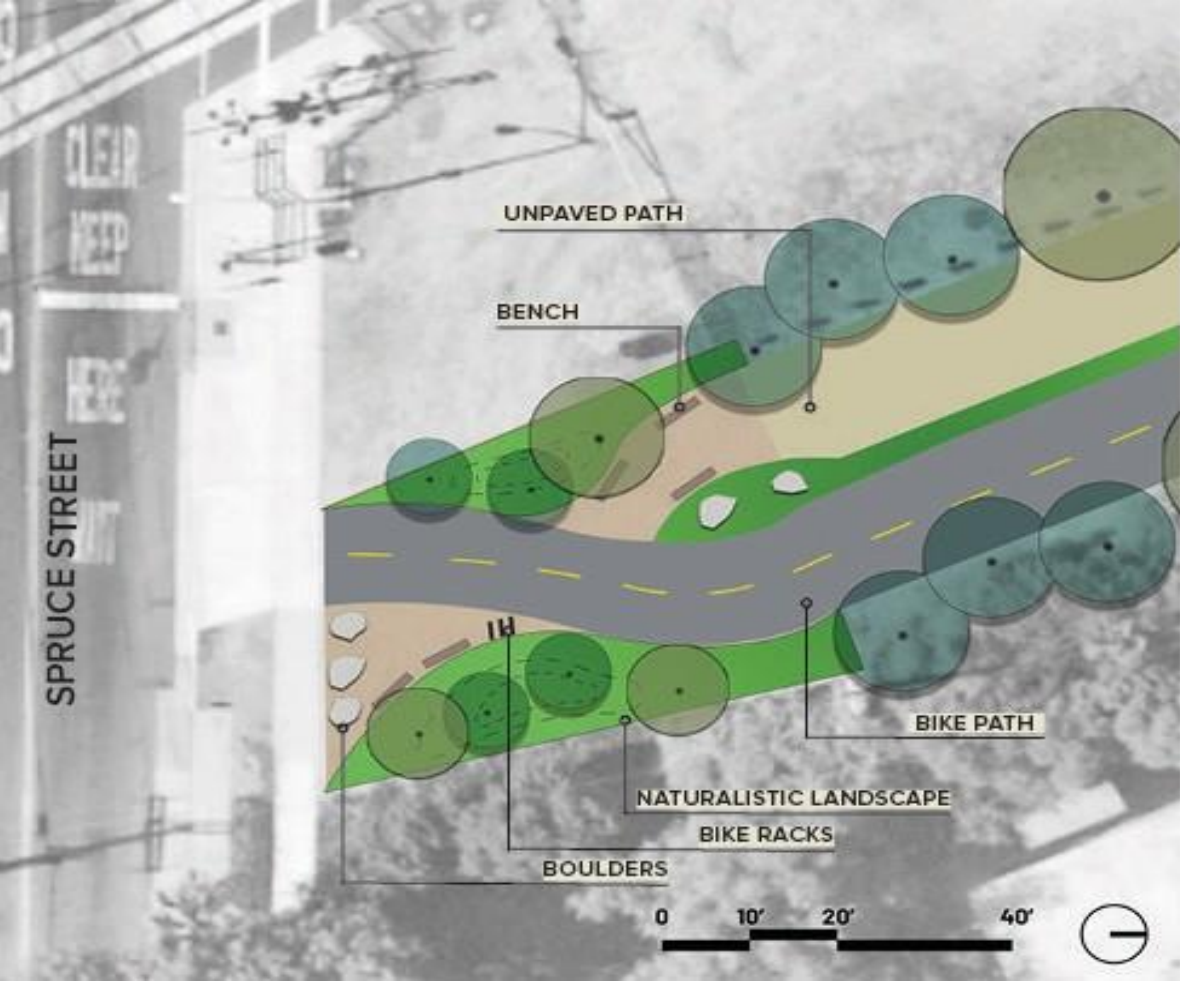


# CONCEPT PLANS

## ZONE 2 : BoxSprings

### CONCEPTUAL GATEWAY DESIGN- PLAN VIEW

The trail gateway design depicted is located at the trail corridor intersection on Spruce Street..



Trail gateway concept rendering at Malborough Avenue





# CONCEPT PLANS

## ZONE 2 : Box Springs

### LANDSCAPE: CONNECTION TO NATURE



- Enhance Local Habitat
- Drought Tolerant
- Monumental Trees + Small Trees
- Reference Box Springs Sage Scrub Community

### LIGHTING



- Reduce lighting to limit disruption to sensitive ecosystems
- Fixtures should be used to direct all illumination down towards the trail surface
- 0.1-0.3 foot-candles

### AMENITIES



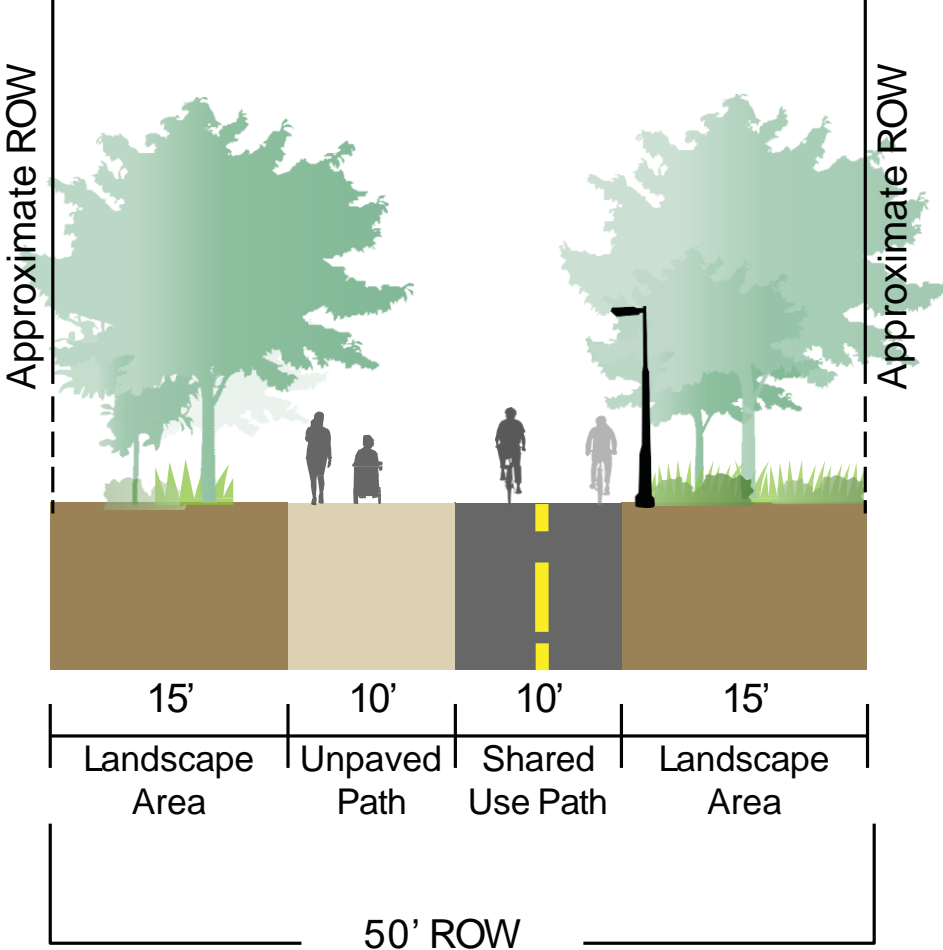
- Seating
- Water Fountains
- Trash Receptacles
- Bicycle parking

# CONCEPT PLANS

## ZONE 3 : Industrial



### TYPICAL SECTION DETAIL



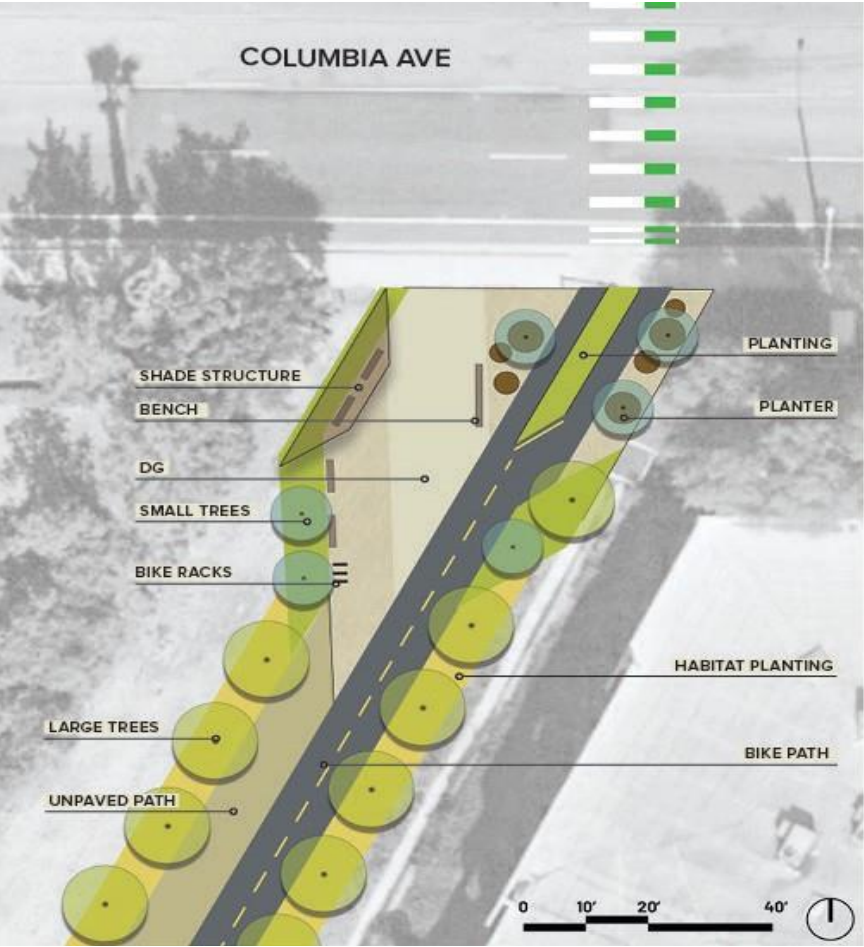


# CONCEPT PLANS

## ZONE 3 : Industrial

### CONCEPTUAL GATEWAY DESIGN- PLAN VIEW

The trail gateway design depicted is located at the intersection on Columbia Avenue on the south side of the street.



Trail gateway concept rendering at Columbia Avenue



# CONCEPT PLANS

## ZONE 3 : Industrial

### LANDSCAPE



- References Industrial Section Landscape Context
- Industrial Section Trailheads/ Gateways
- Monumental Trees + Small Trees

### LIGHTING



- Illumination of the trail surface can increase
- Cut-off fixtures are not necessary
- 0.5-1.0 foot-candles

### AMENITIES



- Seating
- Water Fountains
- Trash Receptacles
- Bicycle parking



# **NEXT STEPS**

**Distribute Draft Master Plan - June 14, 2021**

**Receive Comments on Draft Master Plan from TAC - June 28, 2021**

**Present Final Master Plan to Parks and Rec Commission - July 19, 2021**

**Proceed with PS&E - August 2021**



# RECOMMENDATION

Receive an update and provide feedback for the Gage Canal Trail Improvements Master Plan Project.