



LANDSCAPE

LOT SIZE: 229,718 S.F. (5.27 ACRES)
 TOTAL LANDSCAPE AREA: 87,370 S.F. (38%)
 PARKING LOT LANDSCAPE AREA: 26,162 S.F. (11%)
 LANDSCAPE SETBACK AREA: 24,021 S.F.
 ADDITIONAL LANDSCAPE AREA: 37,187 S.F.

PARKING LOT TREES:

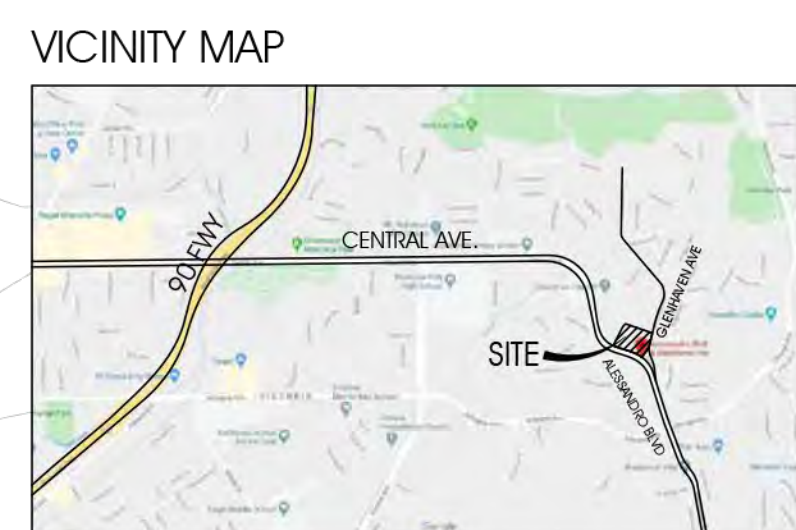
88 NEW TREES PROVIDED
 68 TREES REQUIRED
 1 TREE REQUIRED PER 4 STALLS

ADDITIONAL TREES ON SITE:

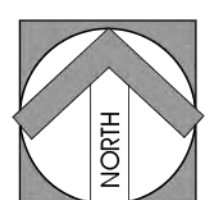
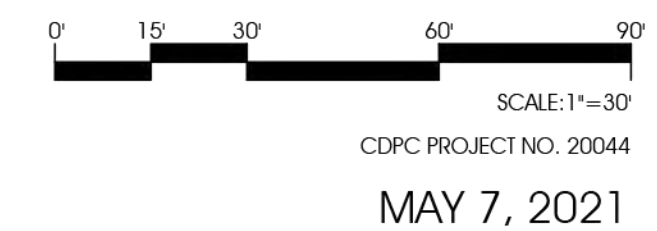
24 TREES
 31 PALMS
 EXISTING PALMS ON SITE TO REMAIN AT ENTRY. PERIMETER PEPPER TREES TO BE REMOVED FOR NEW PROPOSED STREET TREES

RIGHT OF WAY STREET TREES (OFFSITE):
 26 ALONG ALESSANDRO- 20' O.C.
 12 ALONG GLENHAVEN- 25' O.C.

NOTE: REMOVE ANY EXISTING TREE/PALMS LOCATED IN THE PUBLIC RIGHT-OF-WAY. PLANT 24" BOX SIZE PISTACIA ATLANTICA 'RED PUSH' ALONG GLENHAVEN AVE. AND CASCABELLA THEVETIA ALONG ALESSANDRO BLVD. IN PUBLIC RIGHT-OF-WAY. PRIOR TO ANY PLANTING IN PUBLIC RIGHT-OF-WAY SUBMIT PROPOSED TREE PLANTING PLAN TO STREET TREES FOR REVIEW AND APPROVAL AND SCHEDULE SITE INSPECTION FOR TREE INSPECTOR TO DETERMINE PRECISE PLANTING LOCATIONS AFTER FINE GRADING AND HARDSCAPE INSTALLATION IS COMPLETE. PLANTING, STAKING, IRRIGATION, ROOT BARRIERS TO LANDSCAPE AND FORESTRY SPECIFICATIONS.



CONCEPTUAL LANDSCAPE SITE PLAN
 ORANGE CREST COMMUNITY CHURCH
 5695 GLENHAVE AVENUE RIVERSIDE, CA 92506



conceptual design & planning company
 Corporate Office:
 3195-C Airport Loop Drive
 Studio One
 Costa Mesa, CA 92626
 T: 949.395.0870
 www.cdpcinc.com



L-1



LANDSCAPE

LOT SIZE: 229,718 S.F. (5.27 ACRES)
 TOTAL LANDSCAPE AREA: 87,370 S.F. (38%)
 PARKING LOT LANDSCAPE AREA: 26,162 S.F. (11%)
 LANDSCAPE SETBACK AREA: 24,021 S.F.
 ADDITIONAL LANDSCAPE AREA: 37,187 S.F.

PARKING LOT TREES:

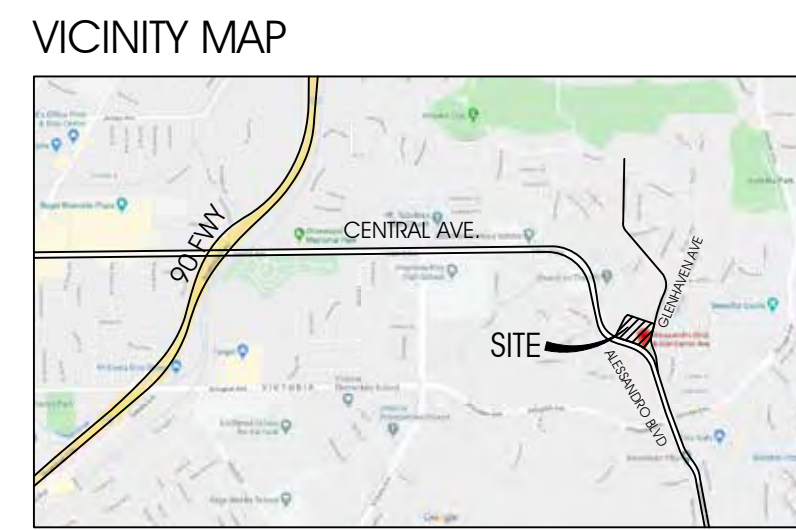
88 NEW TREES PROVIDED
 68 TREES REQUIRED
 1 TREE REQUIRED PER 4 STALLS

ADDITIONAL TREES ON SITE:

24 TREES
 31 PALMS
 EXISTING PALMS ON SITE TO REMAIN AT ENTRY. PERIMETER PEPPER TREES TO BE REMOVED FOR NEW PROPOSED STREET TREES

RIGHT OF WAY STREET TREES (OFFSITE):
 26 ALONG ALESSANDRO- 20' O.C.
 12 ALONG GLENHAVEN- 25' O.C.

NOTE: REMOVE ANY EXISTING TREE/PALMS LOCATED IN THE PUBLIC RIGHT-OF-WAY. PLANT 24" BOX SIZE PISTACIA ATLANTICA 'RED PUSH' ALONG GLENHAVEN AVE. AND CASCABELLA THEVETIA ALONG ALESSANDRO BLVD. IN PUBLIC RIGHT-OF-WAY. PRIOR TO ANY PLANTING IN PUBLIC RIGHT-OF-WAY SUBMIT PROPOSED TREE PLANTING PLAN TO STREET TREES FOR REVIEW AND APPROVAL AND SCHEDULE SITE INSPECTION FOR TREE INSPECTOR TO DETERMINE PRECISE PLANTING LOCATIONS AFTER FINE GRADING AND HARDSCAPE INSTALLATION IS COMPLETE. PLANTING, STAKING, IRRIGATION, ROOT BARRIERS TO LANDSCAPE AND FORESTRY SPECIFICATIONS.

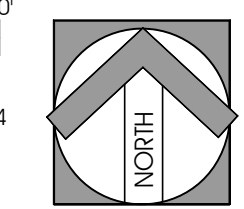


CONCEPTUAL LANDSCAPE PLAN- PLAZA ENLARGEMENT

ORANGE CREST COMMUNITY CHURCH
 5695 GLENHAVE AVENUE RIVERSIDE, CA 92506



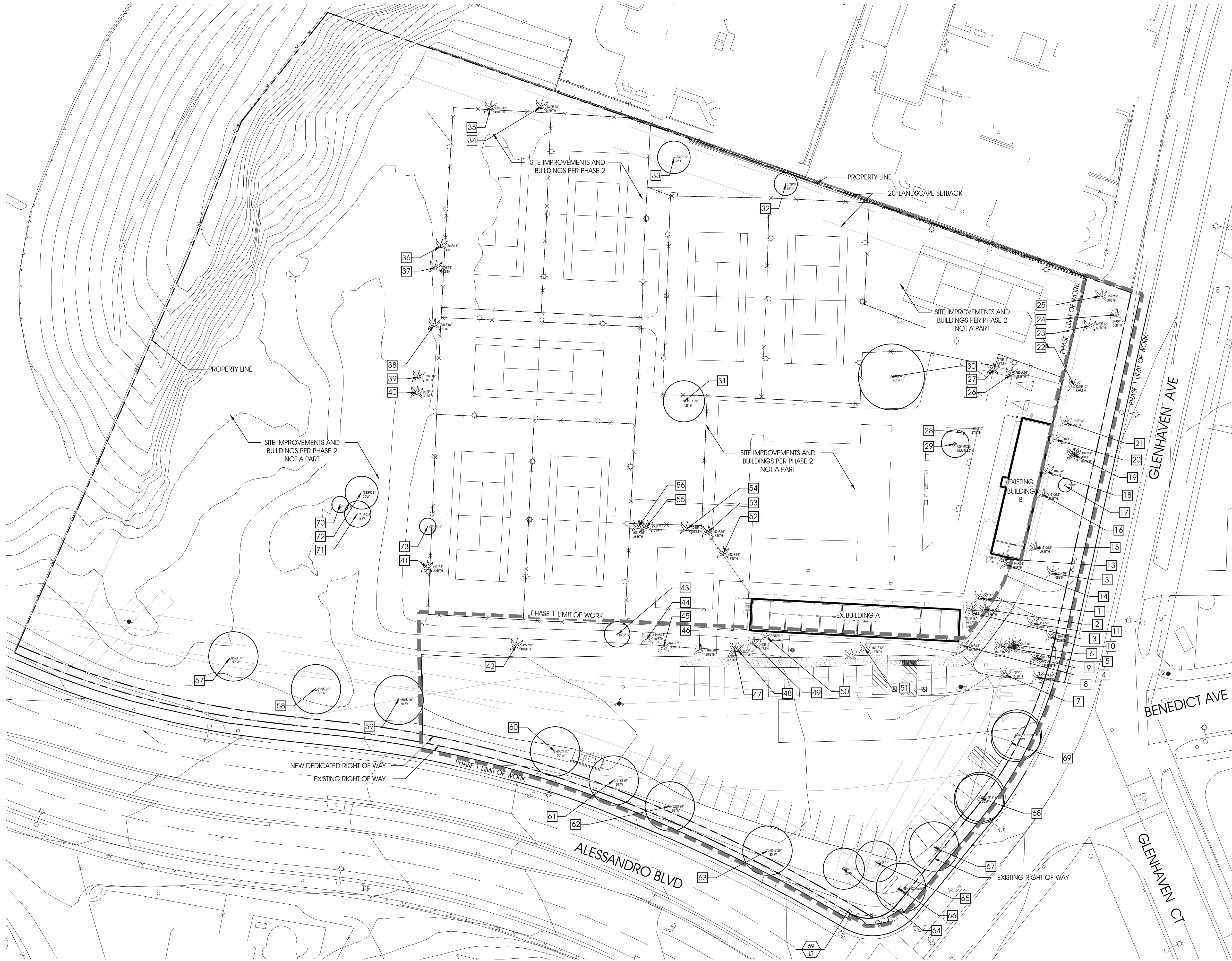
0' 10' 20' 40' 60'
 SCALE: 1"=20'
 CDPC PROJECT NO. 20044
 MAY 7, 2021



conceptual design & planning company
 Corporate Office:
 3195-C Airport Loop Drive
 Studio One
 Costa Mesa, CA 92626
 T: 949.399.0870
 www.cdpcnc.com

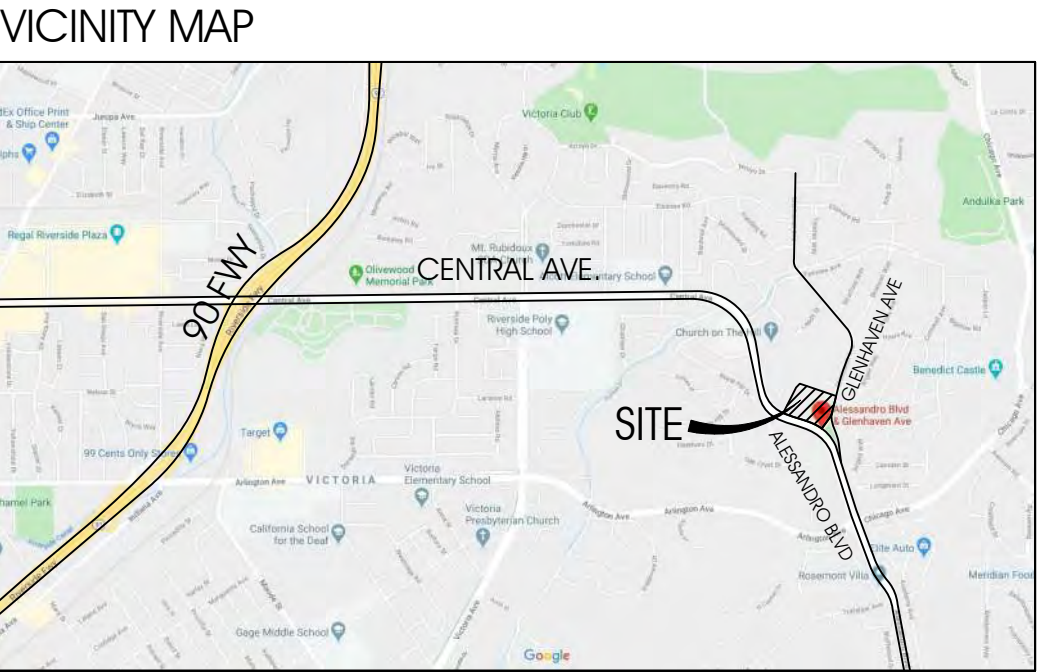


Conceptual Design & Planning Company, Mar 11, 2021, 12:00pm P:\2020044 Orange Crest Comm Church\Land\CD\CD02-24\206-20044- P Concept.dwg vmljanjz



EXISTING TREE INVENTORY

Tree I.D.	Botanical Name	Common Name	Caliper	BTH/ CANOPY	Comments/ Phase
1.	Phoenix canariensis	Canary Island Palm	16"	28' BTH	Remain in Place/ Phase 1
2.	Washingtonia robusta	Mexican Fan Palm	16"	65' BTH	Remain in Place/ Phase 1
3.	Washingtonia robusta Multi-2	Mexican Fan Palm	16"	55' BTH	Remain in Place/ Phase 1
4.	Washingtonia robusta	Mexican Fan Palm	15"	55' BTH	Remain in Place/ Phase 1
5.	Washingtonia robusta	Mexican Fan Palm	16"	40' BTH	Remain in Place/ Phase 1
6.	Washingtonia robusta Multi-4	Mexican Fan Palm	16"	35'-45' BTH	Remain in Place/ Phase 1
7.	Phoenix canariensis	Canary Island Palm	28"	15' BTH	Remain in Place/ Phase 1
8.	Washingtonia robusta	Mexican Fan Palm	14"	55' BTH	Remain in Place/ Phase 1
9.	Washingtonia robusta Multi-2	Mexican Fan Palm	14"	12'-35' BTH	Remain in Place/ Phase 1
10.	Washingtonia filifera	California Fan Palm	15"	33' BTH	Remain in Place/ Phase 1
11.	Phoenix canariensis	Canary Island Palm	20"	28' BTH	Remain in Place/ Phase 1
12.	Washingtonia robusta	Mexican Fan Palm	16"	65' BTH	Remain in Place/ Phase 1
13.	Washingtonia robusta	Mexican Fan Palm	14"	12' BTH	Remain in Place/ Phase 1
14.	Washingtonia robusta	Mexican Fan Palm	16"	65' BTH	Remain in Place/ Phase 1
15.	Syagrus romanzoffiana	Queen Palm	12"	25' BTH	Remain in Place/ Phase 1
16.	Syagrus romanzoffiana	Queen Palm	12"	25' BTH	Remain in Place/ Phase 1
17.	Calba speciosa	Floss Silk Tree	12"	12' W	Remain in Place/ Phase 1
18.	Washingtonia filifera	California Fan Palm	24"	25' BTH	Remain in Place/ Phase 1
19.	Washingtonia robusta Multi-3	Mexican Fan Palm	14"	19'-35' BTH	Remain in Place/ Phase 1
20.	Syagrus romanzoffiana	Queen Palm	12"	25' BTH	Remain in Place/ Phase 1
21.	Washingtonia filifera	California Fan Palm	24"	35' BTH	Remain in Place/ Phase 1
22.	Washingtonia robusta	Mexican Fan Palm	12"	55' BTH	Remain in Place/ Phase 1
23.	Washingtonia robusta	Mexican Fan Palm	12"	50' BTH	Remain in Place/ Phase 1
24.	Washingtonia robusta	Mexican Fan Palm	12"	50' BTH	Remain in Place/ Phase 1
25.	Washingtonia robusta	Mexican Fan Palm	12"	50' BTH	Remain in Place/ Phase 1
26.	Washingtonia robusta	Mexican Fan Palm	16"	55' BTH	Remain in Place/ Phase 1
27.	Washingtonia robusta	Mexican Fan Palm	16"	55' BTH	Remain in Place/ Phase 1
28.	Syagrus romanzoffiana multi-2	Queen Palm	10"	27' BTH	Remain in Place/ Phase 1
29.	Mesoleuca quinquenervia m-3	Paperbark Tree	20"	25' W	Remain in Place/ Phase 1
30.	Platanus acerifolia	London Plane Tree	19"	40' W	Remain in Place/ Phase 1
31.	Prosopis chilensis Multi-4	Chilean Mesquite	12"	25' W	Remain in Place/ Phase 1
32.	Pinus canariensis	Canary Island Pine	9"	28' H	Remain in Place/ Phase 1
33.	Pinus eldarica	Mondell Pine	9"	22' H	Remain in Place/ Phase 1
34.	Washingtonia robusta	Mexican Fan Palm	10"	12' BTH	Remain in Place/ Phase 1
35.	Washingtonia robusta	Mexican Fan Palm	12"	28' BTH	Remain in Place/ Phase 1
36.	Washingtonia robusta	Mexican Fan Palm	14"	10' BTH	Remain in Place/ Phase 1
37.	Washingtonia robusta	Mexican Fan Palm	18"	30' BTH	Remain in Place/ Phase 1
38.	Washingtonia filifera	California Fan Palm	18"	20' BTH	Remain in Place/ Phase 1
39.	Washingtonia filifera	California Fan Palm	18"	30' BTH	Remain in Place/ Phase 1
40.	Washingtonia filifera	California Fan Palm	18"	30' BTH	Remain in Place/ Phase 1
41.	Washingtonia robusta	Mexican Fan Palm	8"	20' BTH	Remain in Place/ Phase 1
42.	Washingtonia robusta	Mexican Fan Palm	10"	40' BTH	Remain in Place/ Phase 1
43.	Schinus molle	Pepper Tree	12"	15' W	Remain in Place/ Phase 1
44.	Washingtonia robusta	Mexican Fan Palm	12"	40' BTH	Remain in Place/ Phase 1
45.	Washingtonia filifera	California Fan Palm	20"	30' BTH	Remain in Place/ Phase 1
46.	Washingtonia filifera	California Fan Palm	20"	35' BTH	Remain in Place/ Phase 1
47.	Washingtonia robusta	Mexican Fan Palm	12"	60' BTH	Remain in Place/ Phase 1
48.	Washingtonia robusta	Mexican Fan Palm	12"	15' BTH	Remain in Place/ Phase 1
49.	Washingtonia robusta	Mexican Fan Palm	12"	50' BTH	Remain in Place/ Phase 1
50.	Washingtonia robusta	Mexican Fan Palm	12"	45' BTH	Remain in Place/ Phase 1
51.	Washingtonia robusta	Mexican Fan Palm	14"	15' BTH	Remain in Place/ Phase 1
52.	Washingtonia robusta	Mexican Fan Palm	16"	18' BTH	Remain in Place/ Phase 1
53.	Washingtonia robusta	Mexican Fan Palm	10"	35' BTH	Remain in Place/ Phase 1
54.	Washingtonia robusta	Mexican Fan Palm	12"	18' BTH	Remain in Place/ Phase 1
55.	Washingtonia filifera	California Fan Palm	20"	15' BTH	Remain in Place/ Phase 1
56.	Washingtonia robusta	Mexican Fan Palm	16"	35' BTH	Remain in Place/ Phase 1
57.	Schinus molle	Pepper Tree	20"	30' W	Remain in Place/ Phase 1
58.	Schinus molle	Pepper Tree	20"	30' W	Remain in Place/ Phase 1
59.	Schinus molle	Pepper Tree	20"	30' W	Remain in Place/ Phase 1
60.	Schinus molle	Pepper Tree	20"	30' W	Remain in Place/ Phase 1
61.	Schinus molle	Pepper Tree	20"	30' W	Remain in Place/ Phase 1
62.	Schinus molle	Pepper Tree	20"	30' W	Remain in Place/ Phase 1
63.	Schinus molle	Pepper Tree	20"	30' W	Remain in Place/ Phase 1
64.	Schinus molle	Pepper Tree	12"	25' W	Remain in Place/ Phase 1
65.	Schinus molle	Pepper Tree	12"	25' W	Remain in Place/ Phase 1
66.	Schinus mole multi-2	Pepper Tree	20"	30' W	Remain in Place/ Phase 1
67.	Schinus mole	Pepper Tree	20"	30' W	Remain in Place/ Phase 1
68.	Schinus mole multi-2	Pepper Tree	20"	30' W	Remain in Place/ Phase 1
69.	Schinus mole multi-2	Pepper Tree	20"	30' W	Remain in Place/ Phase 1
70.	Prosopis chilensis Multi 2	Chilean Mesquite	5"	12' W	Remain in Place/ Phase 1
71.	Parkinsonia aculeata Multi	Jerusalem Thorn	6"	14' W	Remain in Place/ Phase 1
72.	Prosopis chilensis Multi 2	Chilean Mesquite	8"	20' W	Remain in Place/ Phase 1
73.	Fraxinus uhdei	Evergreen Ash Multi	4"	10' W	Remain in Place/ Phase 1

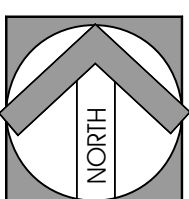


EXISTING TREE PLAN

ORANGECREST COMMUNITY CHURCH
5695 GLENHAVEN AVENUE RIVERSIDE, CA 92506



MARCH 11, 2021



conceptual design & planning company

Corporate Office:
51195-C Airport Loop Drive
Studio One
Costa Mesa, CA 92626
P: 949.399.0870
www.cdpcinc.com

COSTA MESA • ATASCADERO • SAN JOSE



L-1

1 OF 2

Conceptual Design & Planning Company, Apr 26, 2021, 2:02pm P:\2020\044_Orange Crest Comm Church\Land\CD\CD202-24\36\20044 - P_Concept.dwg M:\cshar



PLANTING LEGEND

Tree Symbol

Existing Tree To Remain
Refer to Sheet L-1 for Existing Tree Plan Information

Existing Palm To Remain
Refer to Sheet L-1 for Existing Tree Plan Information

Shrubs	Botanical Name	Common Name	Size/Spacing	WUCOLS (Region 4)
LT	Ligustrum Japonicum Texanum	Texas Privet	5 gal. @ 48" o.c.	Mod

GROUND COVER

Lonicera japonica 'Halliana'	Hall's Japanese Honeysuckle	From Flats @ 18" o.c.	Low
Myoporum parvifolium 'Pink'	Pink Australian Racer	From Flats @ 18" o.c.	Low
Provide Erosion Control Hydroseed			
Lantana 'New Gold'	New Gold Lantana	1 gal. @ 48" o.c.	Low
Myoporum parvifolium 'Pink'	Pink Australian Racer	From Flats @ 18" o.c.	Low
Senecio serpens	Blue Fingers	From Flats @ 12" o.c.	Low

SIZING LEGEND

GRAPHIC SYMBOLS TAKE PRECEDENCE OVER WRITTEN QUANTITIES AND KEYS ON PLAN.

INDICATES QUANTITY

1 GALLON

INDICATES SPECIES

5 GALLON

SOILS REPORT

SOIL TESTING SHALL OCCUR AFTER ROUGH GRADING AND SOIL IMPORT (IF REQUIRED) HAS BEEN COMPLETED, BUT PRIOR TO START OF ANY LANDSCAPE RELATED WORK. THE CONTRACTOR SHALL OBTAIN A STANDARD SOILS TEST FOR AGRICULTURAL SUITABILITY AND FERTILITY PREPARED BY AN APPROVED AGRICULTURAL TESTING LABORATORY. REPORT SHALL CONTAIN STANDARD SOIL TESTING DATA AND SHALL ALSO INCLUDE SOIL INFILTRATION RATE, SOIL TEXTURE AND PERCENTAGE OF ORGANIC MATERIAL CONTENT FOR EACH SAMPLE, AND RECOMMENDATIONS FOR SOIL PREPARATION AND BACKFILL MIX. THIS REPORT SHALL BE FURNISHED TO THE OWNER AND OWNER'S REPRESENTATIVE FOR REVIEW PRIOR TO IMPLEMENTATION. TWO SAMPLES SHALL BE TAKEN AT EACH LOCATION INDICATED ON THE PLANTING PLAN, ONE AT GROUND LEVEL TO 10" DEEP, THE OTHER AT 24" TO 36" DEEP. EACH SAMPLE SHALL CONTAIN APPROXIMATELY ONE QUART OF SOIL AND BE LABELED BY LOCATION AND DEPTH.

PLANT MATERIAL APPROVAL /LANDSCAPE SUPPLY SUBMITTAL

AFTER OBTAINING APPROVAL OF THE AGRICULTURAL SUITABILITY REPORT, AND A MINIMUM OF TWO WEEKS PRIOR TO PLANTING, THE CONTRACTOR SHALL SUBMIT TO THE OWNER / OWNER'S REPRESENTATIVE PLANT MATERIAL PHOTOS FOR APPROVAL. IF REQUESTED BY THE OWNER, THE LANDSCAPE ARCHITECT WILL TAG THE TREE MATERIAL.

ONE PRINTED PHOTOGRAPH OF EACH SPECIES SPECIFIED ON PLAN SHALL BE PROVIDED FOR REVIEW AND APPROVAL. SUBMIT PRINTED PHOTO SUBMITTAL OR DIGITAL PHOTOS BOUND TO ONE PDF FILE OF REASONABLE FILE SIZE, LESS THAN 5MB. WILL BE ACCEPTED.

NO PARTIAL OR INCOMPLETE SUBMITTAL WILL BE ACCEPTED FOR REVIEW. ANY REJECTED SPECIES SHALL BE SUBJECT TO RESUBMITTAL.

EACH PHOTO SHALL CLEARLY SHOW FORM OF THE CROWN AND BRANCHING STRUCTURE OF A SINGLE PLANT WITHOUT OTHER TREES IN THE BACKGROUND.

EACH PHOTO SHALL BE LABELED WITH PLANT NAME, CONTAINER SIZE, SPECIFICATIONS (HEIGHT x CROWN, CALIPER SIZE FOR TREES).

TREE PHOTO SHALL HAVE A MEASURING POLE OR A PERSON IN THE PHOTO FOR RELATIVE SCALE.

PLANTS DELIVERED TO THE PROJECT SITE WILL BE COMPARED TO THE APPROVED SUBMITTALS. IF THE PLANTS DELIVERED ARE FOUND TO BE SUBSTANDARD, THEY MAY BE REJECTED AT ANY TIME PRIOR TO FINAL ACCEPTANCE.

SUBMIT CUT SHEETS OF ALL LANDSCAPE SUPPLIES THAT WILL BE USED FOR LANDSCAPE INSTALLATION PRIOR TO INSTALLATION.

PH 1 LANDSCAPE TOTAL AREA : 22,202 SF

NOTE: ANY EXISTING TREES WITHIN THIS PHASE I AREA IN THE PUBLIC RIGHT OF WAY ALONG GLENHAVEN AND ALESSANDRO TO BE REMOVED



PHASE 1 LANDSCAPE PLAN

ORANGECREST COMMUNITY CHURCH
5695 GLENHAVEN AVENUE RIVERSIDE, CA 92506



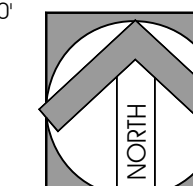
ORANGECREST
COMMUNITY CHURCH

0' 15' 30' 60' 90'

SCALE:1"=30'

CDPC PROJECT NO. 20044

APRIL 26, 2021



conceptual design & planning company

Corporate Office:
31195-C Airport Loop Drive
Studio One
Costa Mesa, CA 92626
Tel: 949.899.0870
www.cdpcinc.com

COSTA MESA • ATASCADERO • SAN JOSE



L-2

2 OF 2