

City of Arts & Innovation

Transportation Board

TO: TRANSPORTATION BOARD **DATE: SEPTEMBER 1, 2021**

FROM: PUBLIC WORKS DEPARTMENT **WARD: 1**

SUBJECT: MARKET STREET AND SIXTH STREET – TRAFFIC CIRCULATION PILOT PROJECT

ISSUE:

Consideration of a traffic circulation pilot project to prohibit through and left-turn movements at the eastbound and westbound approaches at the intersection of Market and Sixth Streets.

RECOMMENDATION:

That the Transportation Board recommend that the City Council approve a 1-month traffic circulation pilot project to prohibit through and left-turn movements at the eastbound and westbound approaches of the intersection of Market and Sixth Streets.

BACKGROUND:

The Public Works Department may utilize turn-restrictions to prohibit specific turning movements particularly during peak commute hours. Pilot projects using temporary improvements including rubber curbing and signage offer the ability to assess the impacts of traffic circulation changes prior to the consideration of installation of more costly and permanent improvements.

The Environmental Impact Report (EIR) for the Fox Plaza Project required specific traffic mitigation measures to be implemented as conditions of development including installation of traffic diverters to prohibit through and left-turn movements at the eastbound and westbound intersection approaches of Market and Sixth Streets and such measures were being applied to 'The Mark' Project. This EIR was developed prior to the installation of the High Intensity Activated Crosswalk (HAWK) signal on Market Street at Sixth Street and the City wishes to pilot the improvements and discuss with business owners prior to both the pilot and potential full project implementation

DISCUSSION:

The Public Works Department is proposing a 1-month pilot project to prohibit through and left-

turn movements at the eastbound and westbound approaches to the intersection at Market and Sixth Streets to allow for assessment of impacts to traffic, pedestrian crossing activity at the intersection utilizing the existing HAWK signal, and local businesses prior to proceeding with permanent diverter improvements in accordance with traffic mitigation measures required as a condition of development with “The Mark” based on the Fox Plaza Project EIR. Installation of traffic diverters may also result in potential negative impacts to the community including the loss of on-street parking adjacent to the improvements, the shifting of area traffic to nearby streets, affects to local businesses due to changes in access, aesthetic effects, and potential effects to Public Works services and emergency vehicle operations. To allow for evaluation of the traffic, pedestrian, and local business impacts of the temporary traffic pattern modification, the Public Works Department has conducted traffic studies before improvements and will conduct additional studies after the project is in place to assess traffic volumes on select area streets and determine if permanent improvements would be considered. The 1-month pilot would take place outside of the Festival of Lights and after The Mark is completed. A meeting with business owners in the immediate area will also be conducted during the pilot project to receive input regarding the traffic circulation modifications, perceived impacts, and to gauge support for potential permanent improvements.

MARKET ST/6TH STREET

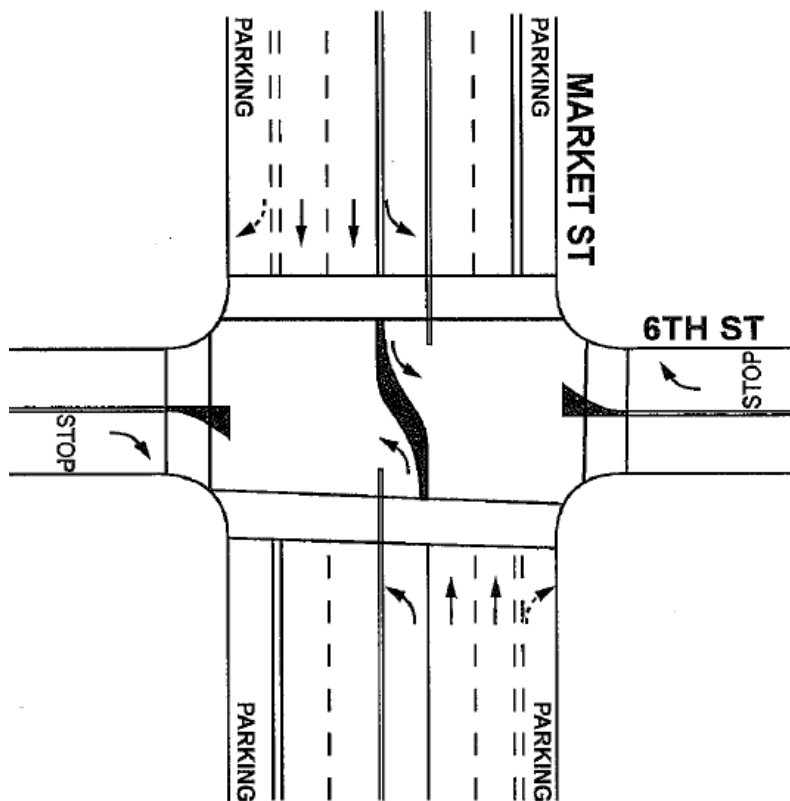


Figure 1: Exhibit of potential traffic pattern modification as detailed in the adopted Fox Plaza EIR

FISCAL IMPACT:

The cost of sign fabrication and installation, as well as rubber curbing and rebar materials or

raised pavements markers and channelizers and installation to implement the pilot project is estimated to be \$5,000. Funding is available in the existing Public Works, General Fund, Streets Maintenance Division, Signing Supplies account number 4110100-424143, to cover this cost.

Prepared by: Nathan Mustafa, PE, TE, AICP, Deputy Public Works Director
Approved by: Gilbert Hernandez, Interim Public Works Director

Attachments:

1. Site Map
2. Aerial Map