



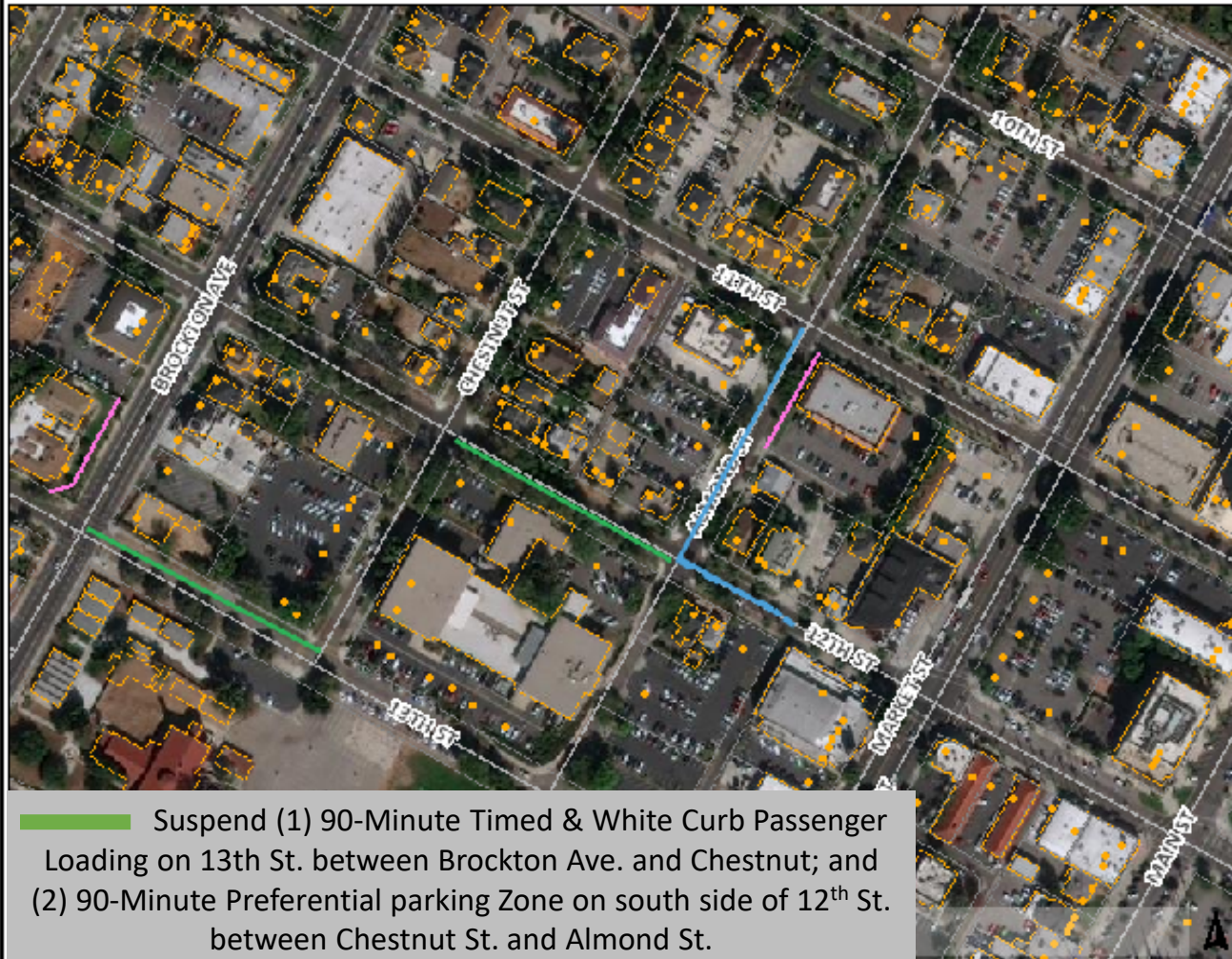
Temporary Parking Consideration for RCOE



Legend

- Administrative Boundary
- City Boundary
- Cadastral
- Address Pt
 - Single Family
- Street Centerline
- Waiver Of Access Restricted
- Parcel
- Planimetric
- Buildings
- 2019 Satellite
 - Red: Band_1
 - Green: Band_2
 - Blue: Band_3

Notes



Green Line: Suspend (1) 90-Minute Timed & White Curb Passenger Loading on 13th St. between Brockton Ave. and Chestnut; and (2) 90-Minute Preferential parking Zone on south side of 12th St. between Chestnut St. and Almond St.

Blue Line: Intermittently prepay metered spaces (1) Both sides of Almond St. between 11th and 12th Streets; and (2) South side of 12th St. from Almond St. until the driveway approach.

by the City of Riverside Geographic Information System and for the convenience of the City. The City does not warrant no decision involving a risk of economic loss or physical injury should be made in reliance thereon.

THIS MAP IS NOT TO BE USED FOR NAVIGATION