



J.W. NORTH WATER TREATMENT FACILITY

Public Utilities Water Committee
September 8, 2021

RiversidePublicUtilities.com



1

1

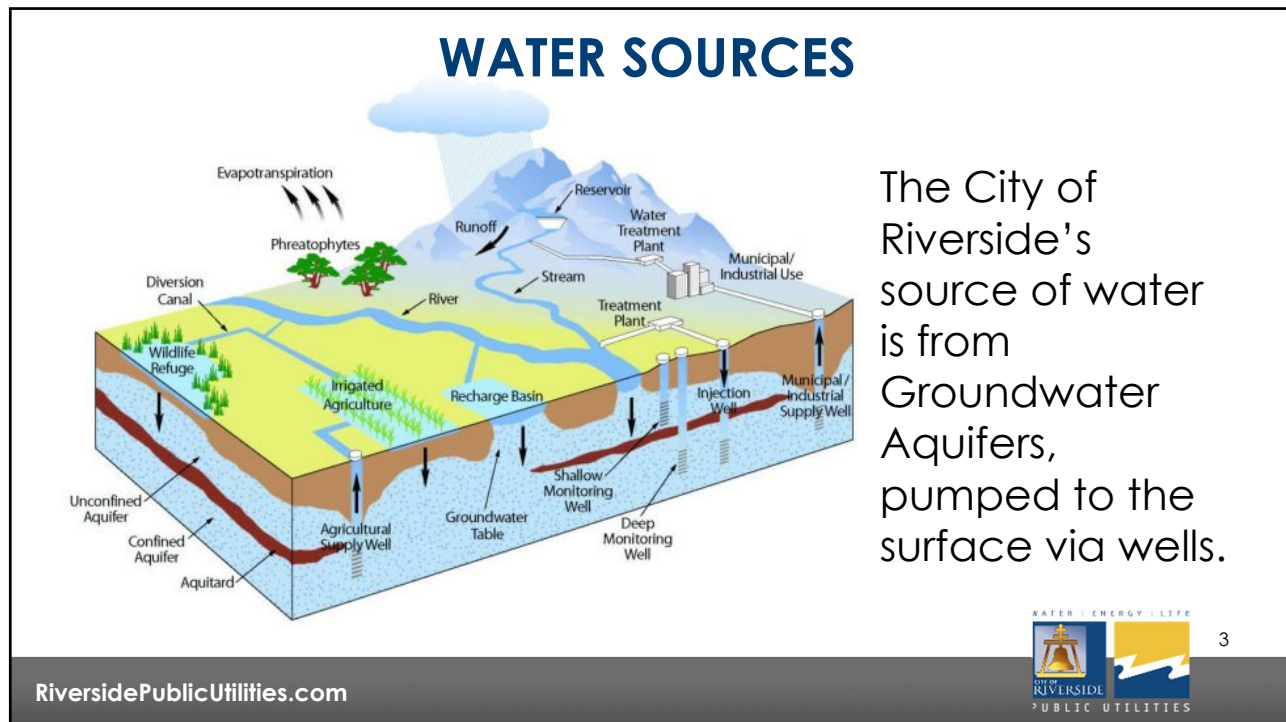
RIVERSIDE PUBLIC UTILITIES

- Population - 324,000 residents
- Established in 1895
- 81 square mile service territory
- 65,000 water meters

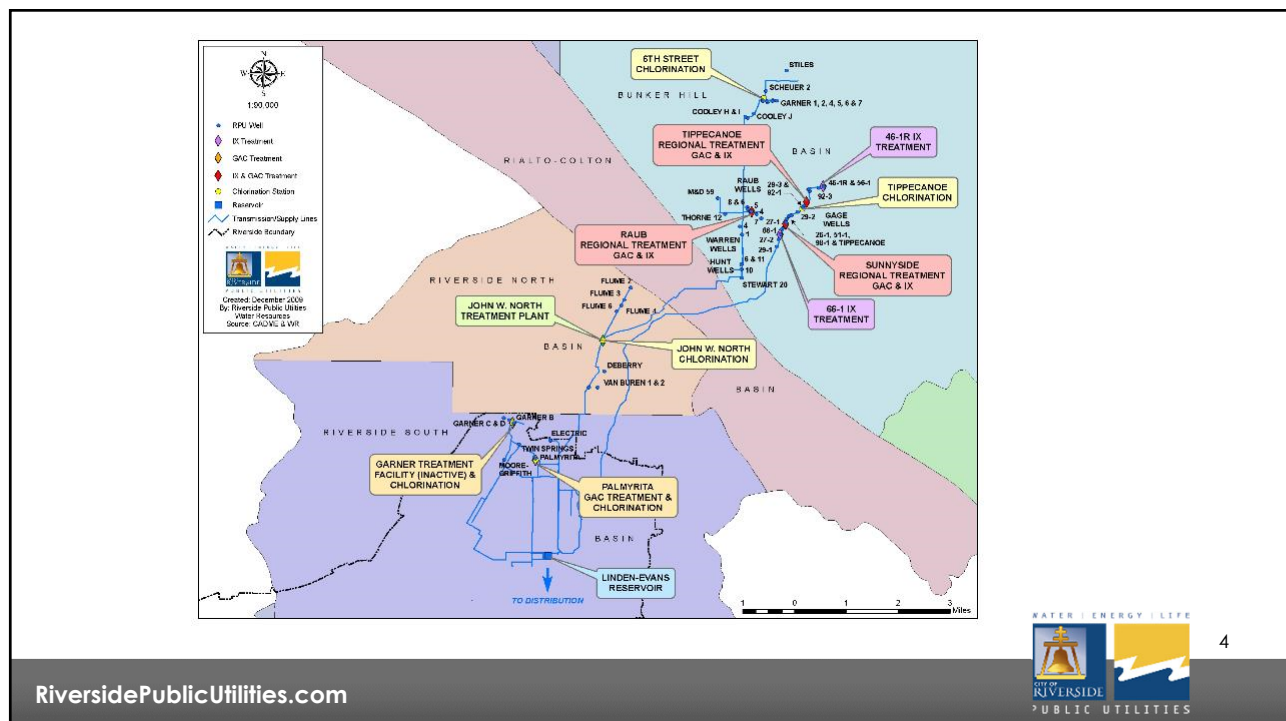


RiversidePublicUtilities.com

2

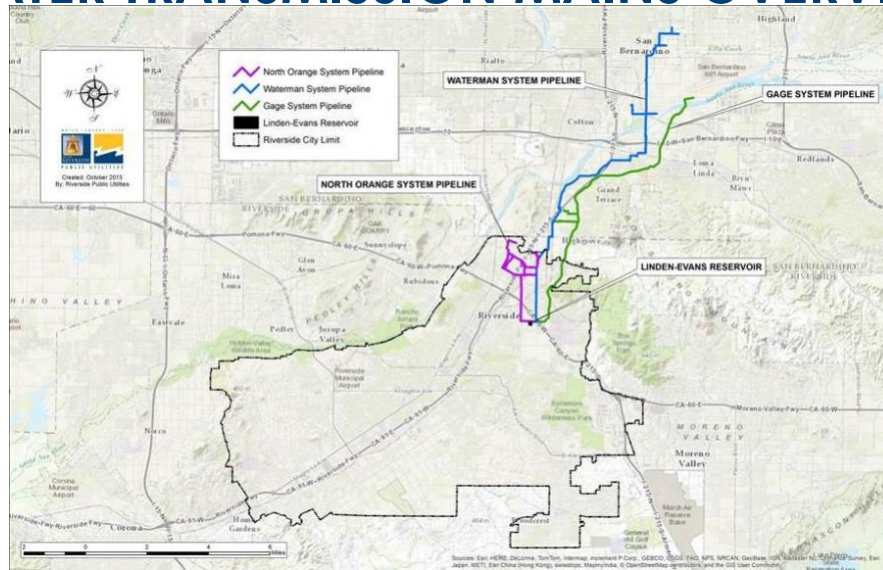


3



4

WATER TRANSMISSION MAINS OVERVIEW



RiversidePublicUtilities.com



5

5

J.W. NORTH SOURCE OF SUPPLY



RiversidePublicUtilities.com



6

6

J.W. NORTH TREATMENT PLANT



RiversidePublicUtilities.com



7

7

J.W. NORTH TREATMENT PLANT

1. Treatment for ground water under the influence of surface water using submerged membrane technology.
2. Plant Capacity 10 Million Gallons Per Day (MGD)
3. Planning for the water treatment plant began in 2005 and the plant was completed in 2009

RiversidePublicUtilities.com



8

8

J.W. NORTH TREATMENT PLANT ULTRAFILTRATION MEMBRANE SYSTEM

1. The treatment process is the ZeeWeed 1000 treatment system manufactured by General Electric (GE).
2. The Ultrafiltration process involves 0.02-micron wide pore openings that pass-through water, but block viruses and most bacteria
3. Vacuum is applied to the inside of the straws, drawing water through the pores while micro-contaminants are kept outside

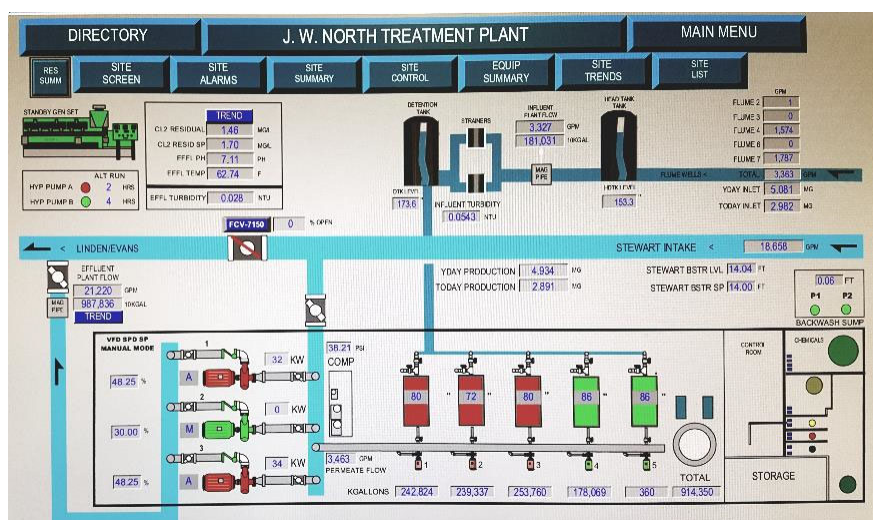
RiversidePublicUtilities.com



9

9

PROCESS OVERVIEW (SCADA VIEW)



RiversidePublicUtilities.com



10

10

FIRST POINT OF ENTRY

Head Tank



Detention Tank



RiversidePublicUtilities.com



11

11

J.W. NORTH TREATMENT PLANT



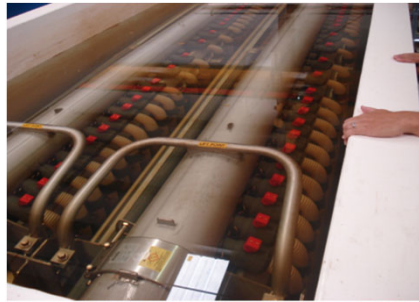
RiversidePublicUtilities.com



12

12

J.W. NORTH TREATMENT PLANT



RiversidePublicUtilities.com

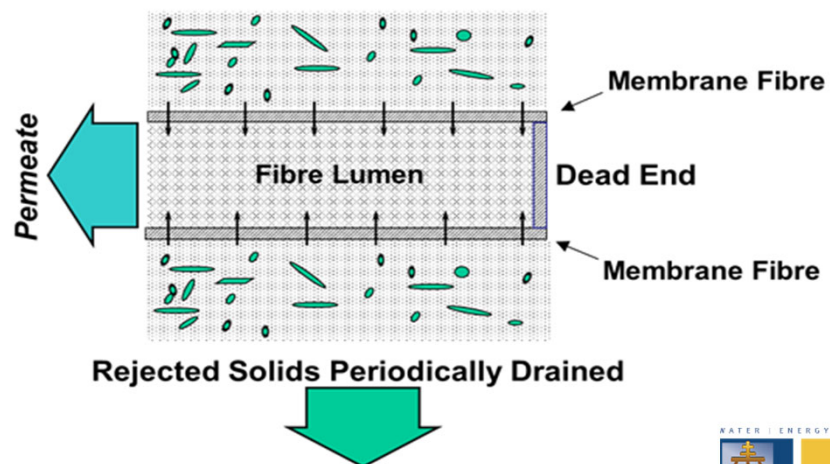


13

13

J.W. NORTH PROCESS

Ultrafiltration



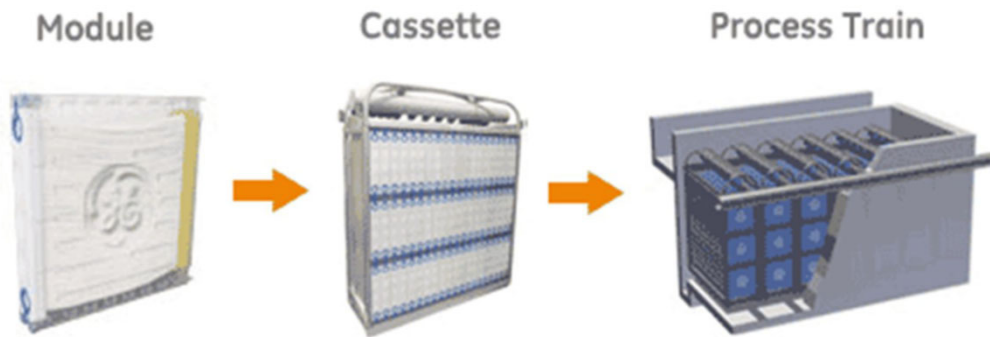
RiversidePublicUtilities.com



14

14

SUBMERGED MEMBRANE FILTER



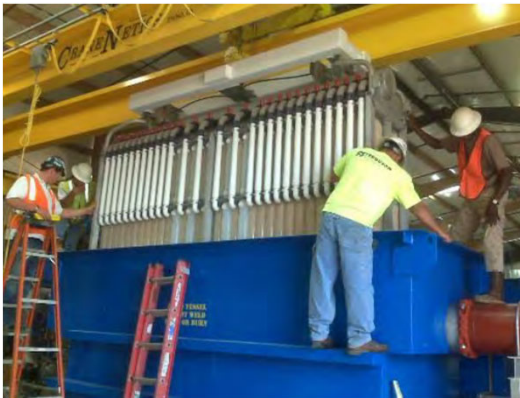
RiversidePublicUtilities.com



15

15

ULTRAFILTRATION BASIN



Ultrafiltration Basin



Two Cassettes within Basin

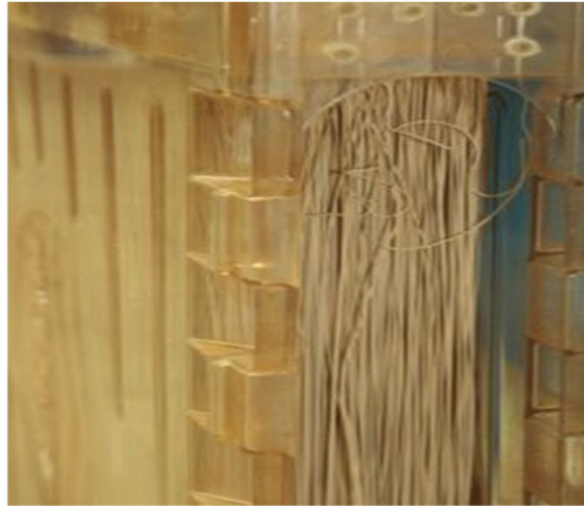
RiversidePublicUtilities.com



16

16

FILTER MEMBRANE



RiversidePublicUtilities.com



17

17

J.W. NORTH TREATMENT PLANT ULTRAFILTRATION MEMBRANE

1. Visually, the individual membranes look like thin hollow straws that are 0.8 mm in diameter.
2. A vacuum is applied to the inside of the straws, drawing water through the pores while micro-contaminants are kept outside

RiversidePublicUtilities.com



18

18

STRATEGIC PLAN ALIGNMENT

Strategic Priority #2 – Community Well-being:

Goal 2.3 Strengthen neighborhood identities and improve community health and physical environment through amenities and programs that foster an increase sense of community and enhance feelings of pride and belonging citywide. **High water quality contributes to overall public health.**

Strategic Priority #4 – Environmental Stewardship:

Goal 4.2. Sustainably manage local water resources to maximize reliability and advance water reuse to ensure safe, reliable, and affordable water to our community.

RiversidePublicUtilities.com



19

19

CROSS-CUTTING THREADS

Item aligns with EACH of the five :

1. **Community Trust**, by providing safe reliable drinking water
2. **Equity**, water availability to ensure every member of the community has equal access
3. **Fiscal Responsibility**, produce RPU source water versus import
4. **Innovation**, use best available technology non potable wells
5. **Sustainability & Resiliency**, meeting the needs of the present utilizing an existing local water resource.

RiversidePublicUtilities.com



20

20

RECOMMENDATION

That the Board of Public Utilities Water Committee receive the overview of the John W. North Water Treatment Facility.