

SALT AND NUTRIENT MANAGEMENT PLAN FOR THE UPPER SANTA ANA RIVER WATERSHED GROUNDWATER BASIN

Public Utilities Department

Board of Public Utilities
September 13, 2021

RiversidePublicUtilities.com



1

BACKGROUND

The Salt and Nutrient Management Plan is

1. Required to permit and implement various water resource management projects.
2. Tool to assess the impacts that salt and nitrate have on the long-term sustainability of groundwater supply.
3. Useful to analyze potential long-term basin-wide effects from newly constructed water discharging projects on groundwater quality.
4. An opportunity for potential project funding between water agencies for developing and protecting local groundwater supplies.

RiversidePublicUtilities.com



2

BACKGROUND

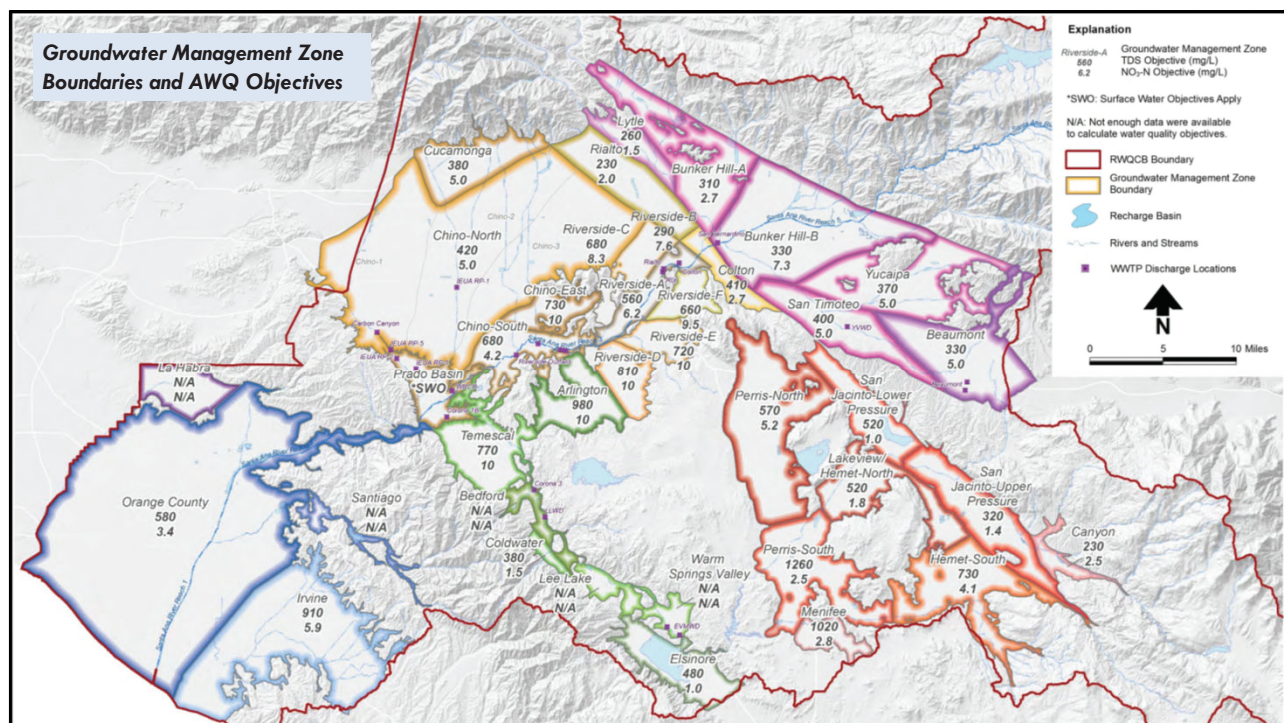
The Salt and Nutrient Management Plan will:

1. Estimate ambient water quality in groundwater basins.
2. Assess compliance with groundwater quality objectives.
3. Determine if assimilative capacity exists in groundwater management zones (GMZs).

RiversidePublicUtilities.com



3



DISCUSSION

1. SBVMWD (Valley) on behalf of the Upper Santa Ana River Watershed Stakeholders and in cooperation with the Santa Ana Regional Water Quality Control Board (RWQCB), hired a consultant to develop the scope of work for this effort.
2. The RFP received one proposal from Water Systems Consulting (WSC), Geoscience Support Services, Woodard & Curran, and LeClaire & Associates.
3. The proposal was reviewed by an inter-agency review team (RPU included) and unanimously recommended it.
4. Stakeholders unanimously supported hiring the Proposal team.



5

RiversidePublicUtilities.com

DISCUSSION

5. Valley's Board authorized Valley Staff on January 19, 2021, to hire WSC Team (includes Geoscience Support Services, LeClaire & Associates, and Woodard & Curran) for the preparation of the SNMP in the amount of \$473,073.



6

RiversidePublicUtilities.com

COST SHARING BY PARTICIPATING AGENCIES

Total Proposal Cost - \$473,073

COST SHARING BY AGENCY	Project Management	Phase 1	Phase 2	TOTAL PROPOSAL	TOTAL(%)
¹ Western Municipal Water District	\$ 6,185	\$ 7,819	\$ 9,650	\$ 23,654	5%
² City of Colton	\$ 6,185	\$ 7,819	\$ 9,650	\$ 23,654	5%
³ City of Redlands	\$ 6,185	\$ 7,819	\$ 9,650	\$ 23,654	5%
⁴ City of Rialto	\$ 6,185	\$ 7,819	\$ 9,650	\$ 23,654	5%
⁵ City of Riverside	\$ 6,185	\$ 7,819	\$ 9,650	\$ 23,654	5%
⁶ East Valley Water District	\$ 6,185	\$ 7,819	\$ 9,650	\$ 23,654	5%
⁷ San Bernardino Municipal Water Department	\$ 6,185	\$ 7,819	\$ 9,650	\$ 23,654	5%
⁸ San Bernardino Valley Water Conservation District	\$ 6,185	\$ 7,819	\$ 9,650	\$ 23,654	5%
⁹ San Geronio Pass Water Agency	\$ 6,185	\$ 7,819	\$ 9,650	\$ 23,654	5%
¹⁰ Yucaipa Valley Water District	\$ 6,185	\$ 7,819	\$ 9,650	\$ 23,654	5%
¹¹ San Bernardino Valley Municipal Water District	\$ 61,847	\$ 78,186	\$ 96,504	\$ 236,537	50%



7

RiversidePublicUtilities.com

DISCUSSION

The SNMP will use a collaborative, phased approach

- **Phase 1:** Water Quality Analysis of the GMZs, compute historical and existing TDS and TIN concentrations, and calculate available assimilative capacity, if any.
- **Phase 2 :** Utilize the Integrated Model to simulate the effect of the proposed projects.
- **Phase 3 (Optional):** Develop an SNMP and submit to RWQCB if an increase in Water Quality Objectives is possible from Phase 2.



8

RiversidePublicUtilities.com

SUMMARY

RPU's participation is recommended in this joint regional effort:

- a. ensure that the City of Riverside interests are considered and evaluated in the study
- b. findings and recommended path forward protects the water supplies of the Upper Santa Ana River Watershed into the future.

STRATEGIC PLAN ALIGNMENT

The preparation of a regional project such as the SNMP supports the priorities of the City of Riverside's Envision Riverside 2025 Strategic Plan, which contributes to Environmental Stewardship Strategic Priority No. 4 and Goal No. 4.2 – Sustainably manage local water resources to maximize reliability and advance water reuse to ensure safe, reliable and affordable water to our community.

STRATEGIC PLAN ALIGNMENT

This item aligns with each of the five Cross-Cutting Threads as follows:

1. **Community Trust** – This project is a cooperative effort between multiple regional water agencies and stakeholders that went through numerous meetings to prepare the scope of work and receive input to strengthen a larger community outreach and result in greater public good.
2. **Equity** – RPU endeavors to provide safe and reliable water service to all its customers. Since RPU's water system is an interconnected network, investments made to individual parts of the system improve the reliability of the overall system, thereby providing an equitable benefit to all customers
3. **Fiscal Responsibility** – RPU is contributing five percent of the project cost but will benefit from the shared results of the study equally among the stakeholders.
4. **Innovation** – This project proposal is using an innovative approach to study the Salt and Nutrient in the Upper Santa Ana River Watershed and will also be using innovative sampling techniques.
5. **Sustainability & Resiliency** – This project has a direct contribution to the sustainability, reliability, and best management of the long term groundwater supplies in the region.



11

RiversidePublicUtilities.com

RECOMMENDATIONS

That the Board of Public Utilities:

1. Recommend that the City Council approve the Cost Sharing Agreement between San Bernardino Valley Municipal Water District and City of Riverside in an amount not to exceed \$23,654.
2. Approve the expenditure for RPU's participation in the Preparation of the Salt and Nutrient Management Plan for the Upper Santa Ana River Watershed Groundwater Basins in an amount not to exceed \$23,654.



12

RiversidePublicUtilities.com