



## RECONSIDERATION OF THE RPU 2021 WILDFIRE MITIGATION PLAN UPDATE

### ROSA and Energy Delivery

Board of Public Utilities  
September 27, 2021

RiversidePublicUtilities.com



## PRIOR RPU BOARD ACTION

1. June 14, 2021, the RPU Board recommended that the City Council approve the 2021 RPU Wildfire Mitigation Plan (WMP)
2. Staff opted to pull the item from City Council consideration prior to the July 1, 2021 submittal date
3. Staff determined that the WMP should have been updated to reflect an Advisory Opinion issued by the State's Wildfire Safety Advisory Board and addressed to publicly owned utilities

RiversidePublicUtilities.com



## LEGISLATIVE REQUIREMENTS

Public Utilities Code Section 8387 states:

1. Every electric utility in California is required to construct, maintain, and operate their electrical system in a manner that minimizes the risk of wildfire
2. All utilities are required to prepare a Wildfire Mitigation Plan (WMP) and update the plan annually
  - a. Content is specified and prescriptive – WMP is a compliance document
  - b. An independent evaluator with experience in assessing the safe operation of electrical infrastructure must review the WMP
  - c. WMP and the independent evaluator report must be presented at a public meeting of the utility's governing board
  - d. Reports must be posted on the utility's website
  - e. Reports must be submitted to the State's Wildfire Safety Advisory Board

RiversidePublicUtilities.com



3

## WILDFIRE MITIGATION PLAN

Identifies and addresses the following:

1. High Fire Threat Districts (HFTD) in RPU Service Territory
2. RPU electric infrastructure located within the HFTD
3. Assessment of fire risk posed by electric infrastructure
4. Preventative strategies to reduce risk
5. Customer support and communications in the event of a de-energization
6. Metrics and assessment



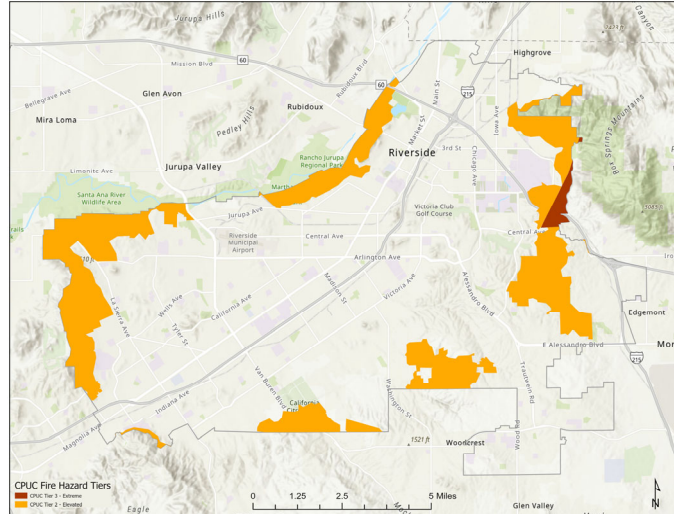
RiversidePublicUtilities.com



4

## HIGH FIRE THREAT DISTRICTS

1. Identified by State agencies and stakeholder including RPU and Riverside Fire
2. Fire Threat Districts
  - a. Tier 2: Areas with elevated wildfire risk
  - b. Tier 3: Areas with extreme wildfire risk (typically undeveloped natural lands)



RiversidePublicUtilities.com



5

## RPU INFRASTRUCTURE IN HFTD

	Total	Tier 2		Tier 3 OH	
	Circuit-Miles	Circuit-Miles	%	Circuit-Miles	%
Overhead Distribution	517	31.9	6.2%	2.8	0.5%
Overhead Transmission*	91	11.1	12.2%	0.003	0.00%
<b>Total Overhead Circuit-Miles</b>	<b>608</b>	<b>43.0</b>	<b>7.1%</b>	<b>2.8</b>	<b>0.5%</b>

\*Note: SCE owns and operates seven transmission lines extending from SCE's Vista Substation. These lines comprise 22 miles of overhead transmission that feed into RPU and are not included in the table. RPU takes ownership of these lines at the boundary of its service territory. Lines in RPU territory are included in the overhead transmission of the table.

RiversidePublicUtilities.com



6

## PREVENTATIVE STRATEGIES

### Design & Construction Standards

- Materials Used
- Equipment Standards

### Inspections & Maintenance

- Vegetation Management
- Equipment Inspection

### Operational Policies

- Reclosing
- De-Energization

### Situational Awareness

- Weather Monitoring
- Cameras

RiversidePublicUtilities.com



7

## 2020 PERFORMANCE

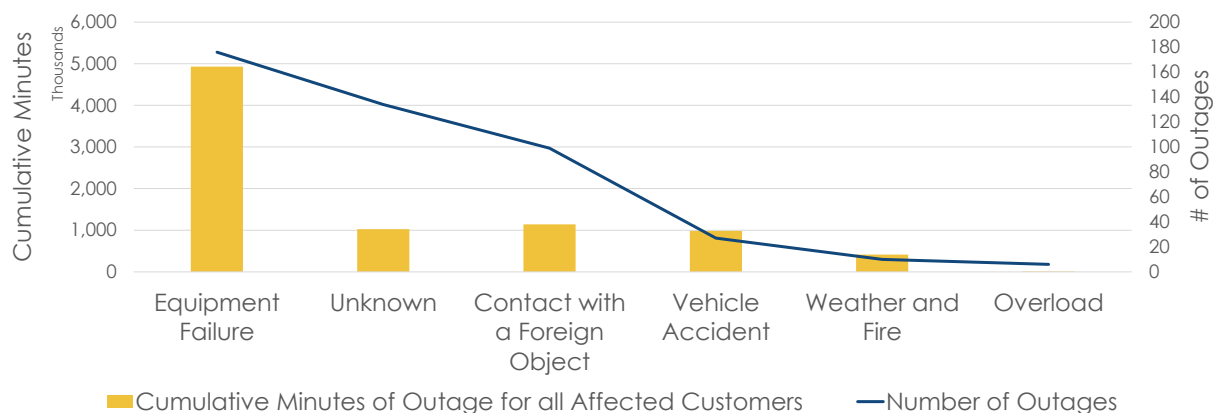
- 1. No fires were caused by RPU electrical equipment in 2020**
- 2. System and Operational Improvements**
  - a. Updated substation automation systems to new real time automation controllers
  - b. Added 3 weather stations at the Harvey Lynn, Springs, and RERC Substations
  - c. Added 3 regional viewing cameras
  - d. Added video streaming into the grid operations center
- 3. Continue close collaboration with the Riverside Fire Department**

RiversidePublicUtilities.com



8

## 2020 OUTAGE ANALYSIS - METRICS



RiversidePublicUtilities.com



9

## NEXT STEPS

1. Submission of the 2021 RPU WMP – Version 2 to the Wildfire Safety Advisory Board upon Council approval
2. Independent Evaluator review of WMP in 2021
3. Improve evaluation tools and refine preventative strategies and metrics
4. Update the plan for 2022
  - a. Incorporate comments from the Independent Evaluator and Wildfire Safety Advisory Board 2021 review
  - b. Incorporate any identified improvements after review of 2021 data

RiversidePublicUtilities.com



10

## STRATEGIC PLAN ALIGNMENT

This item contributes to Strategic Priorities No. 4 Environmental Stewardship and No. 6 Infrastructure, Mobility and Connectivity and the following goals:

1. **Goal 4.3** – Implement local and support regional proactive policies and inclusive decision-making processes to deliver environmental justice and ensure that all residents breathe healthy and clean air with the goal of having zero days of unhealthy air quality per the South Coast Air Quality District's Air Quality Index (AQI)
2. **Goal 4.6** – Implement the requisite measures to achieve citywide carbon neutrality no later than 2040.
3. **Goal 6.2** – Maintain, protect, and improve assets and infrastructure within the City's built environment to ensure and enhance reliability, resiliency, sustainability, and facilitate connectivity.



11

RiversidePublicUtilities.com

## STRATEGIC PLAN ALIGNMENT

1. **Community Trust** – The WMP addresses strategies to prevent wildfire caused by RPU electrical equipment and articulates a clear communications strategy for our customers in a de-energization event ensuring public safety for the greater public good by minimizing and mitigating risk of wildfire.
2. **Equity** – The WMP is utility wide and identifies measures and strategies to protect the safety and wellbeing of all customers of RPU and many areas of the region.
3. **Fiscal Responsibility** – The WMP represents fiscal responsibility by establishing strategies to minimize potential wildfires and the associated financial impacts that RPU and the City could incur.
4. **Innovation** – The WMP identifies new technology and deployment a new infrastructure that helps RPU mitigate the risks of its electrical equipment causing a wildfire.
5. **Sustainability & Resiliency** – The WMP reduces the potential that a wildfire will occur due to RPU's electrical equipment and thus reduces the potential release of greenhouse gas emissions and pollutants that negatively affect air quality.



12

RiversidePublicUtilities.com

## RECOMMENDATION

That the Riverside Public Utilities Board recommend that the City Council approve RPU's 2021 Wildfire Mitigation Plan, Version 2 update for submittal in accordance with Public Utilities Code Section 8387 for submittal to the Wildfire Safety Advisory Board.