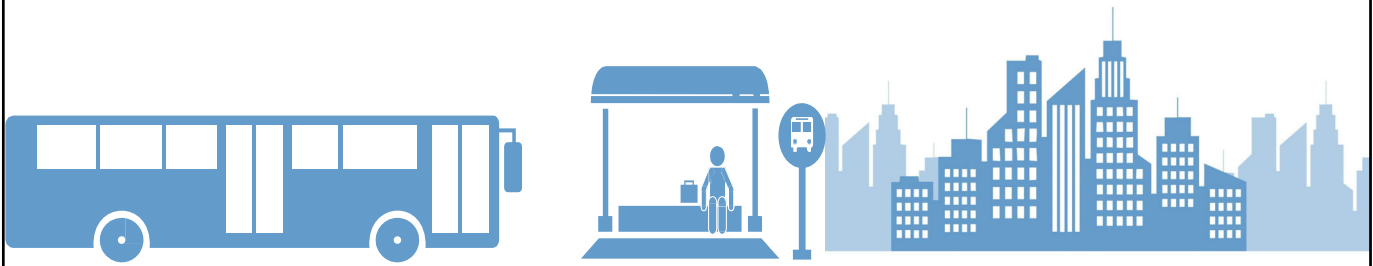


MOBILITY HUB
FINAL DESIGN

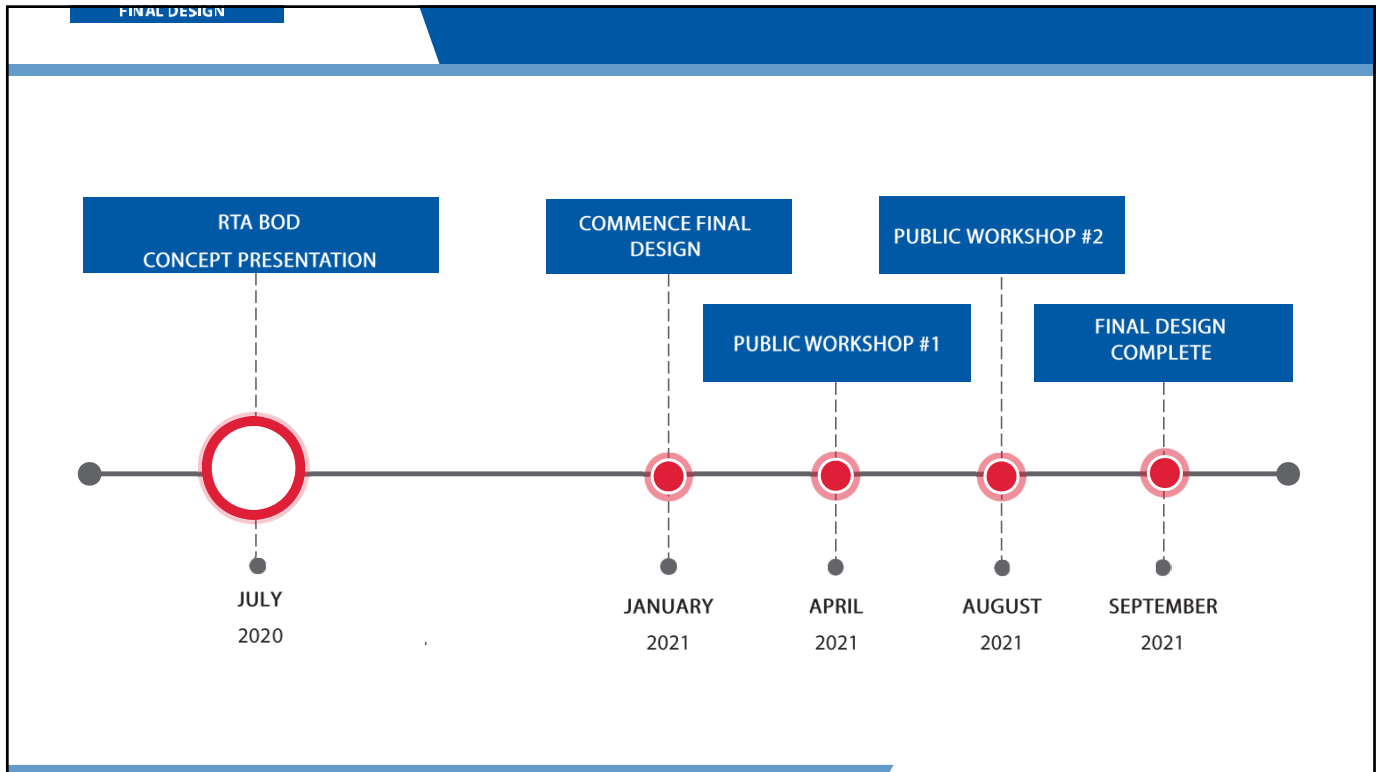


1

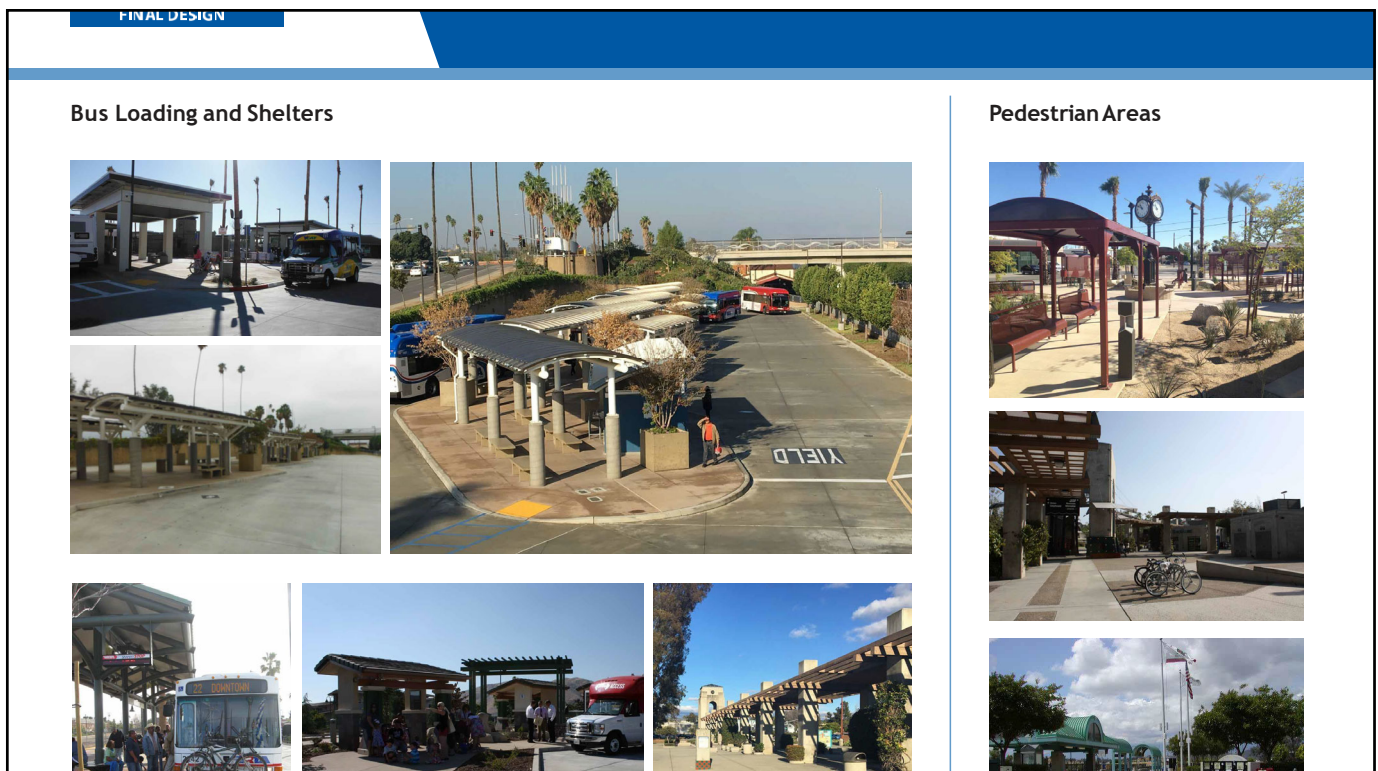
FINAL DESIGN



2



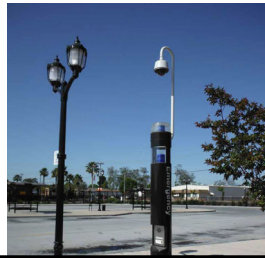
3



4

FINAL DESIGN

Site Safety and Information

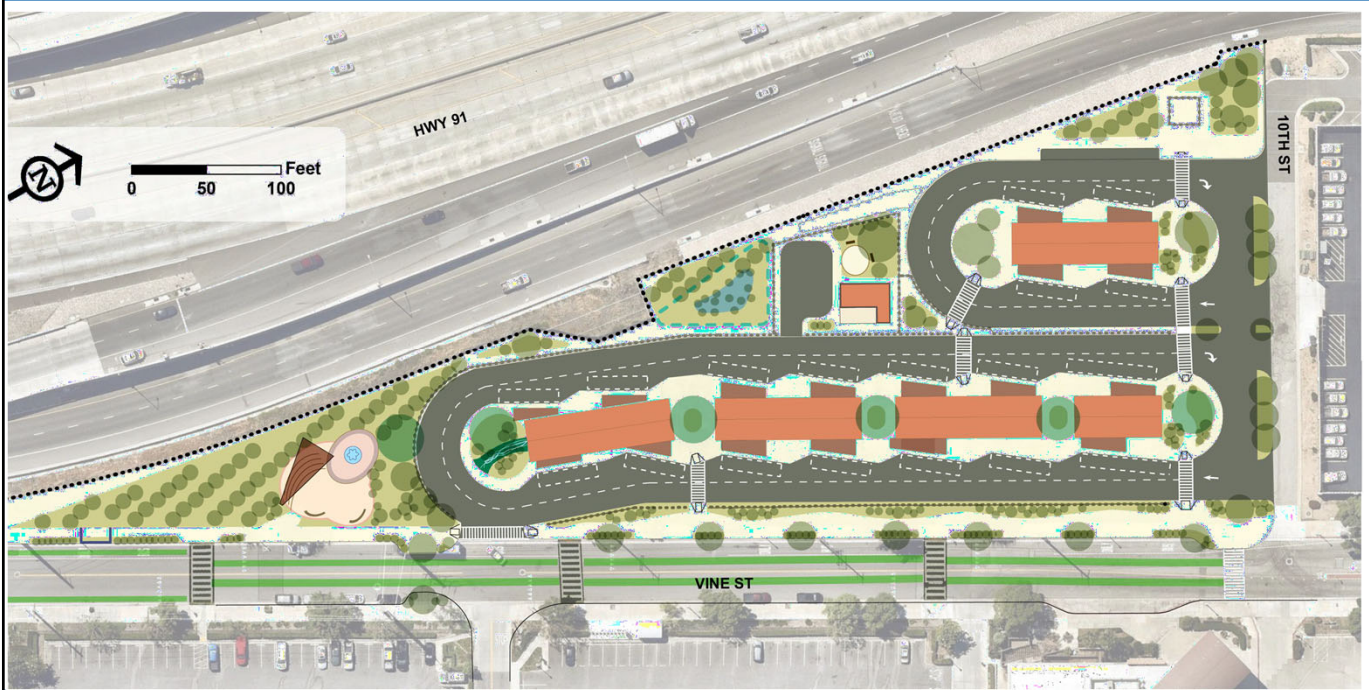


Public Art

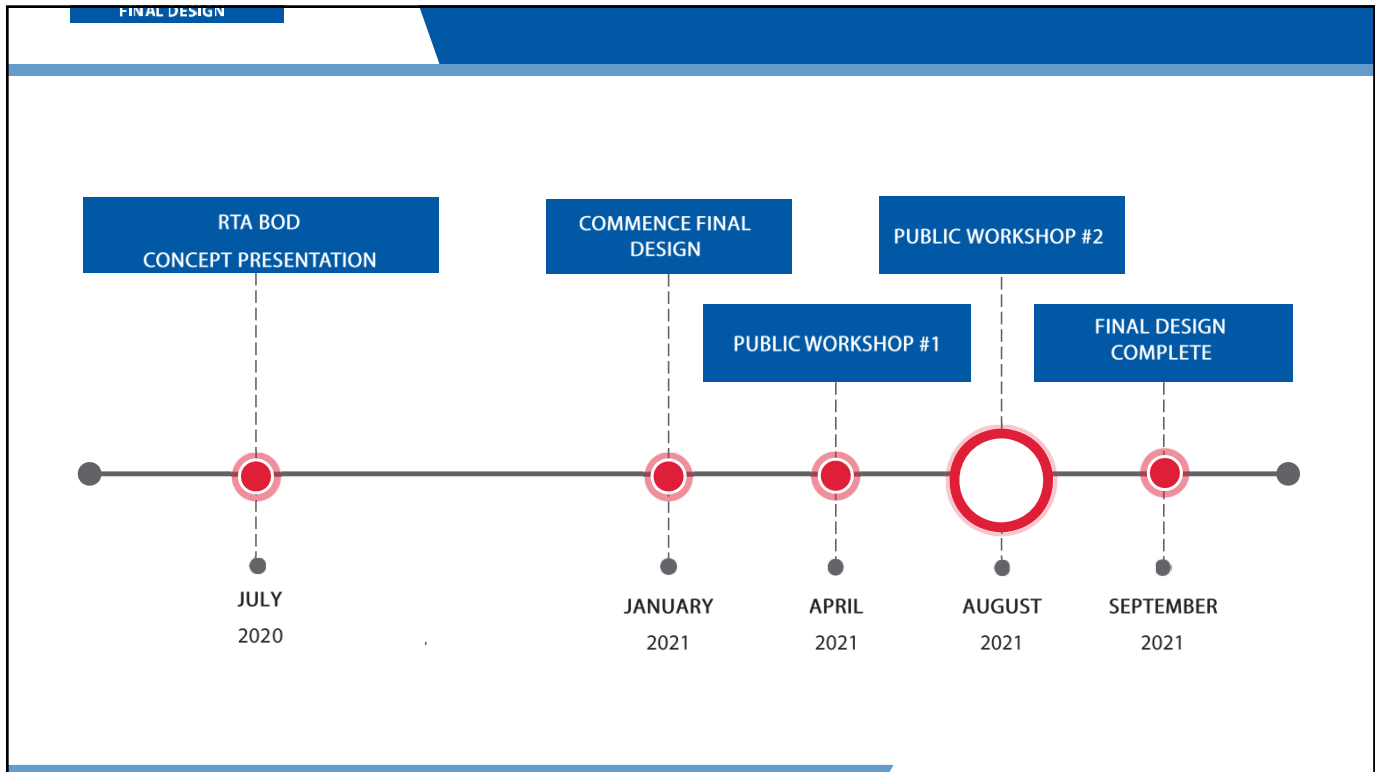


5

FINAL DESIGN



6



7

FINAL DESIGN

- **RTA Rider Alert Promoting Workshop**
Social Media Notification Through RTAs
– Instagram – Twitter – Facebook
- **Email Notifications**
- **Notification Flyers**
– April 7, 2021
– July 22, 2021
- **Door-to-Door Notification (2,500 Flyers)**
– April 8, 2021
– August 22, 2021

THE VINE STREET MOBILITY HUB **FINAL DESIGN** **ONLINE PUBLIC WORKSHOP**

WE HEARD YOU AND APPRECIATE YOUR INPUT!

The Riverside Transit Agency (RTA) will hold a special workshop August 5-11 to share information on the ambitious Vine Street Mobility Hub.

The virtual workshop will be our fourth such event to help build this important project near downtown Riverside across from the Riverside-Downtown Metrolink Station. Once created, the Vine Street Mobility Hub will transform the way public transportation is delivered in downtown Riverside and offer residents another reason to ride the bus.

The workshop is a great way for residents of Riverside County to learn more about the mobility hub and the valuable public feedback that's shaping its creation.

The virtual meeting room will focus on the following:

- Project Area
- Site Plan
- Station Elements
- Concepts/Designs
- Project Schedule
- Overview Sheet
- Feedback Station

WHEN
DATE: Thursday, August 5, 2021 through Wednesday, August 11, 2021

WHERE
 Visit the project website at vinestmohub.com to access this workshop in the virtual meeting room.

Let's Keep Moving Together

Please take the short survey on the project website to provide your valuable input and help RTA improve mobility throughout the region.

vinestmohub.com

CONTACT INFORMATION

Kristin Warsinski
 Director of Planning
 Riverside Transit Agency

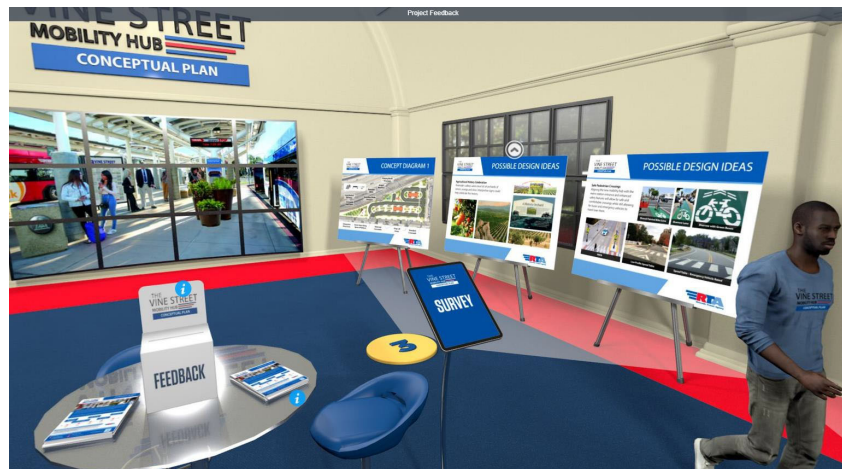
(951) 565-3136
vinestmohub.com

8

FINAL DESIGN

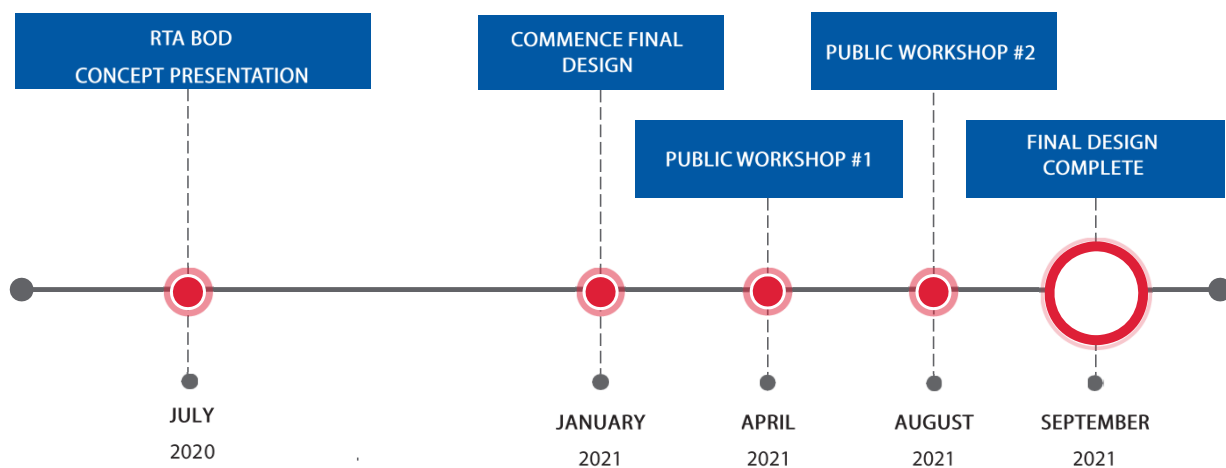
- Public Workshops

- April 15, 2021 through April 20, 2021
- August 5, 2021 through August 11, 2021



9

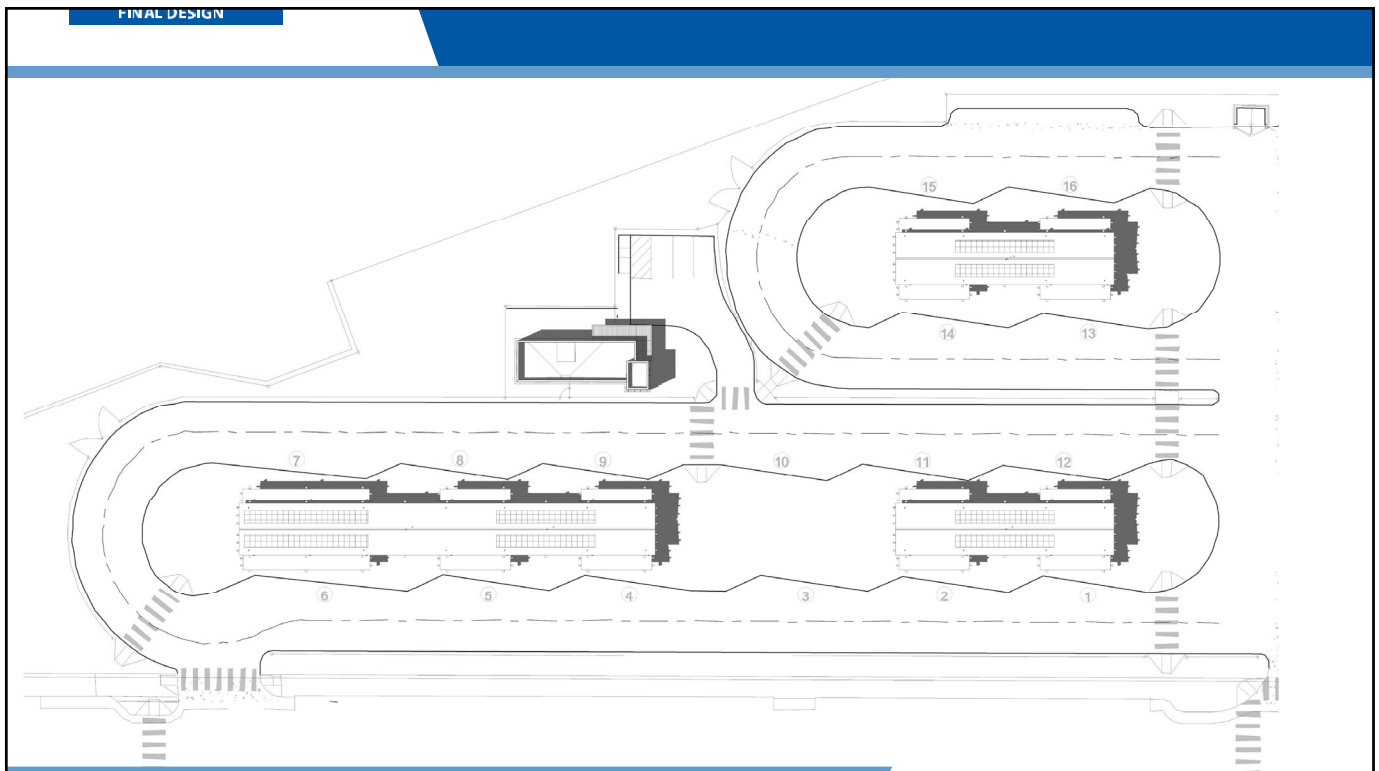
FINAL DESIGN



10

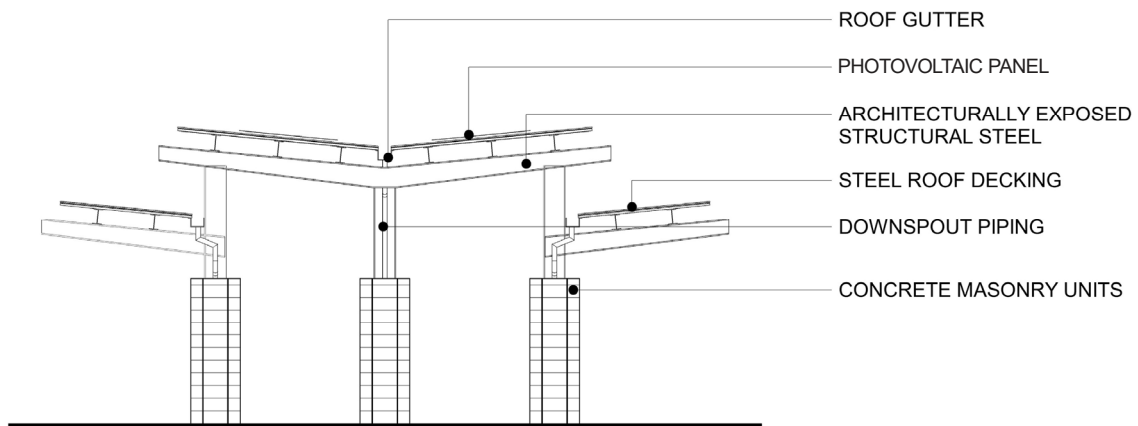


11



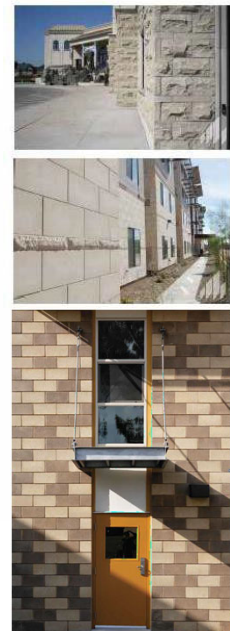
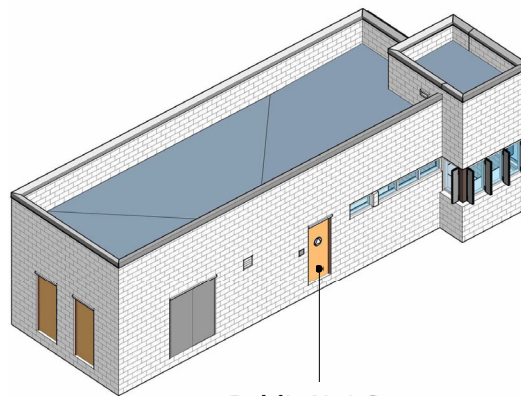
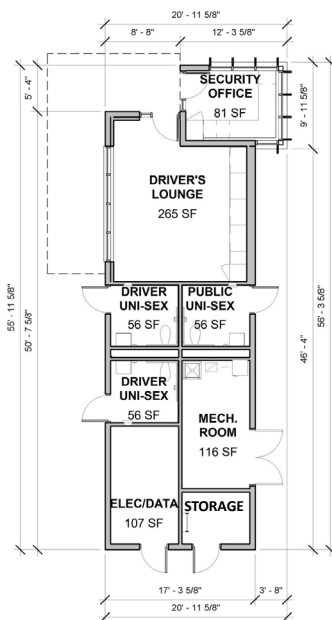
12

FINAL DESIGN



13

FINAL DESIGN



Images represent recent material & finish concepts.

14

CONCEPTUAL PLAN



Low Decorative Walls

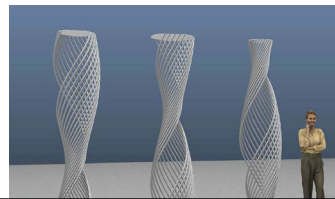


Light Poles located throughout Site



Shade Structure in Low Zone

Vertical Sculpture Elements located in Park Area and on Bus Platforms



15

CONCEPTUAL PLAN



Lithocrete Representation of the Santa Anna River Corridor

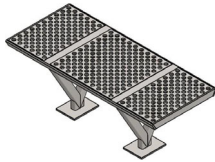


16

CONCEPTUAL PLAN

BENCHES
36 total units

Keystone Ridge Customized VT15 volant 4' long flat all steel perforated Bench
*With the project's chosen color finish.

**TRASH/RECYCLING**
10 total units

Keystone Ridge Harmony Dual Recycle/Litter Receptacle
*With the project's chosen color finish.

**4' STEEL ACCENT FENCE**
988.05 linear feet**6' STEEL SECURITY FENCE**
988.05 linear feet**WATER FOUNTAIN**
3 total units

Park Warehouse Water Bottle Filling Station & Drinking Fountain
Dark Bronze Finish

**COLOR FINISH* ON MOST METAL SURFACES**

For most metal surfaces:
Dunn Edwards® DE6392 Mink



Mink
DE6392 RL#595
Cool Neutrals, 2014, Perfect Palette®

BIKE RACK
6 total units

Victor Stanley Cycle Sentry Bike Rack with Central Steel Plaque for Signage
Tubular Steel for two bikes
*With the project's chosen color finish.

**DRIVER'S BREAK TABLE**
1 unit

Outdoor Creations Concrete Round Picnic Table

**6' TALL PERIMETER FENCE**
478.89 linear feet**BIKE LOCKERS**

2 groups of three
DURA DL1 Single Bike Locker
39" wide x 75" long



On-Demand Bike Parking, uses pad lock handle for commuters to use their own locks.

17

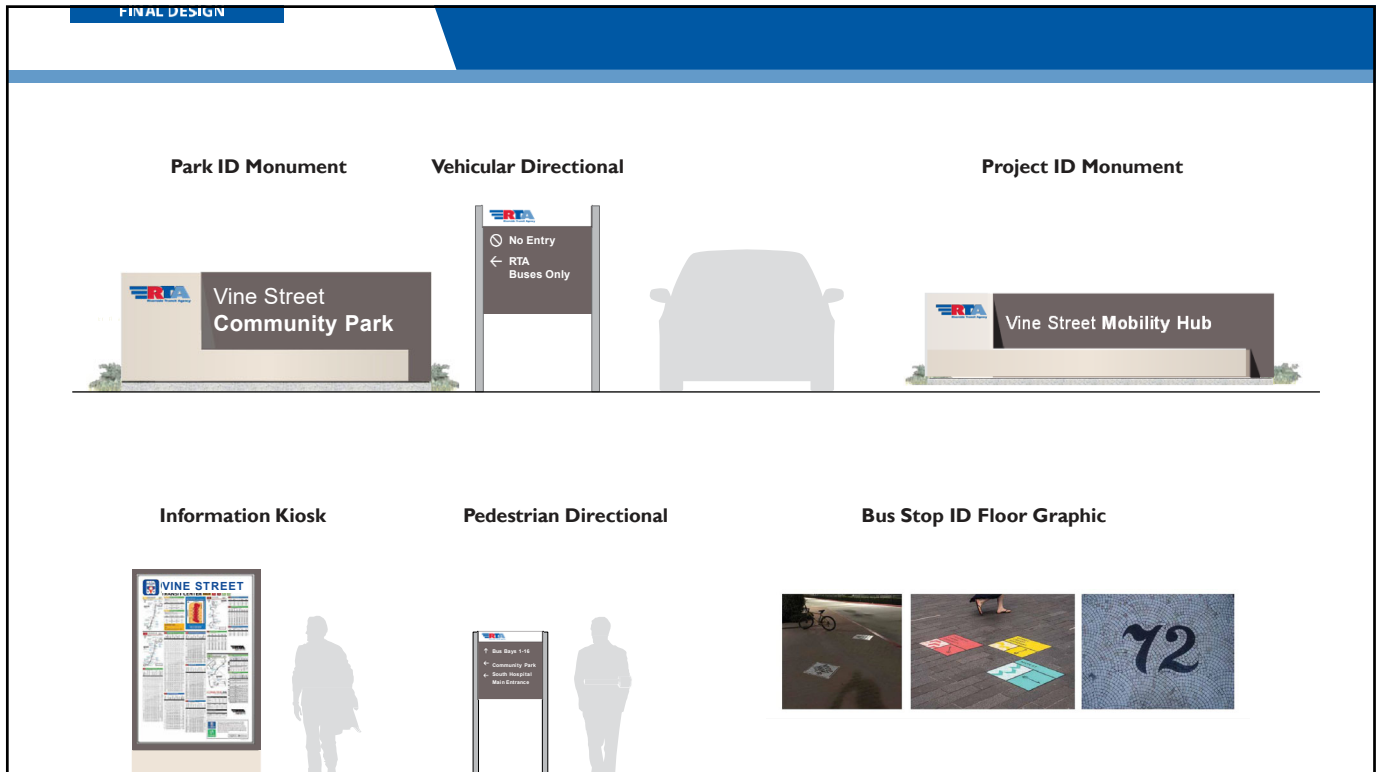
FINAL DESIGN

Safe Pedestrian Crossings

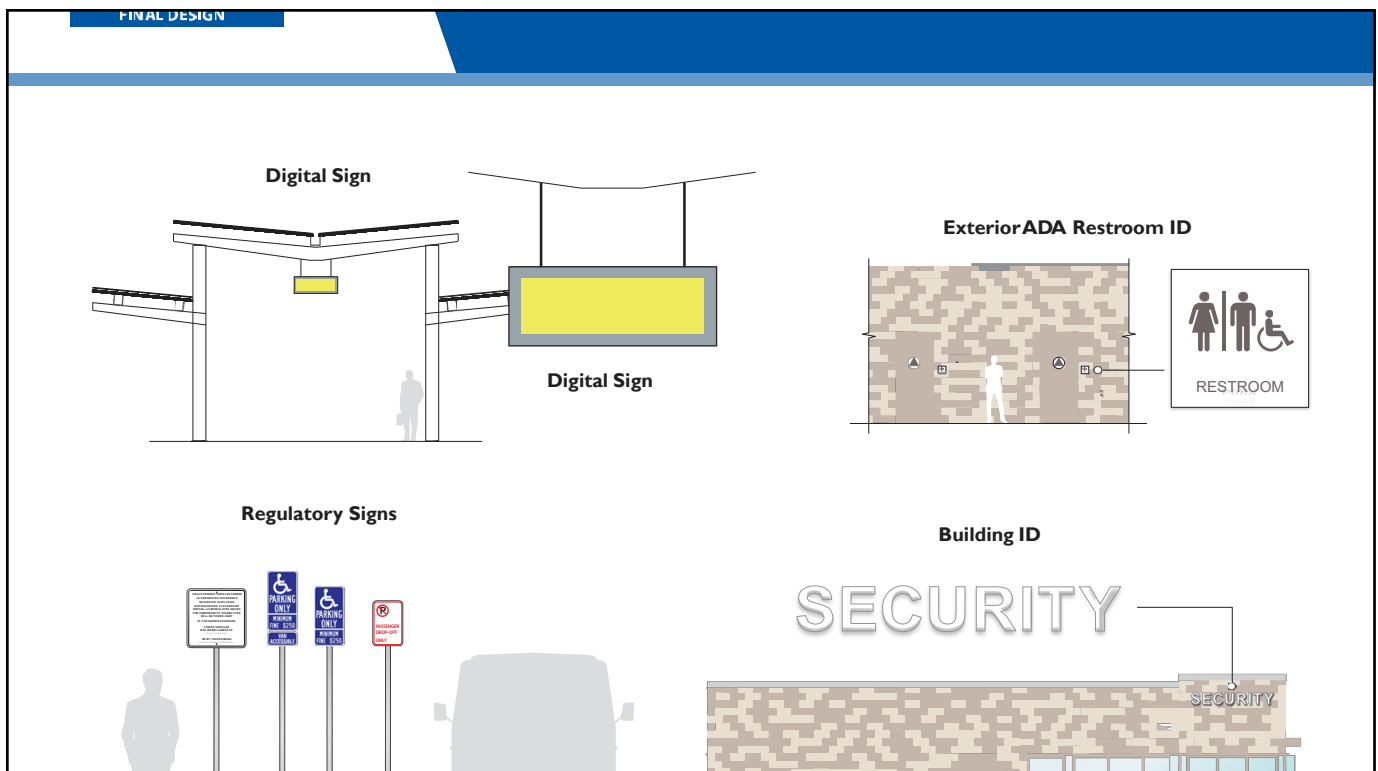
Aligning the new mobility hub with the metro station entrance. Enhanced safety features will allow for safe and comfortable crossings while still allowing for buses and emergency vehicles to travel over them.



18



19



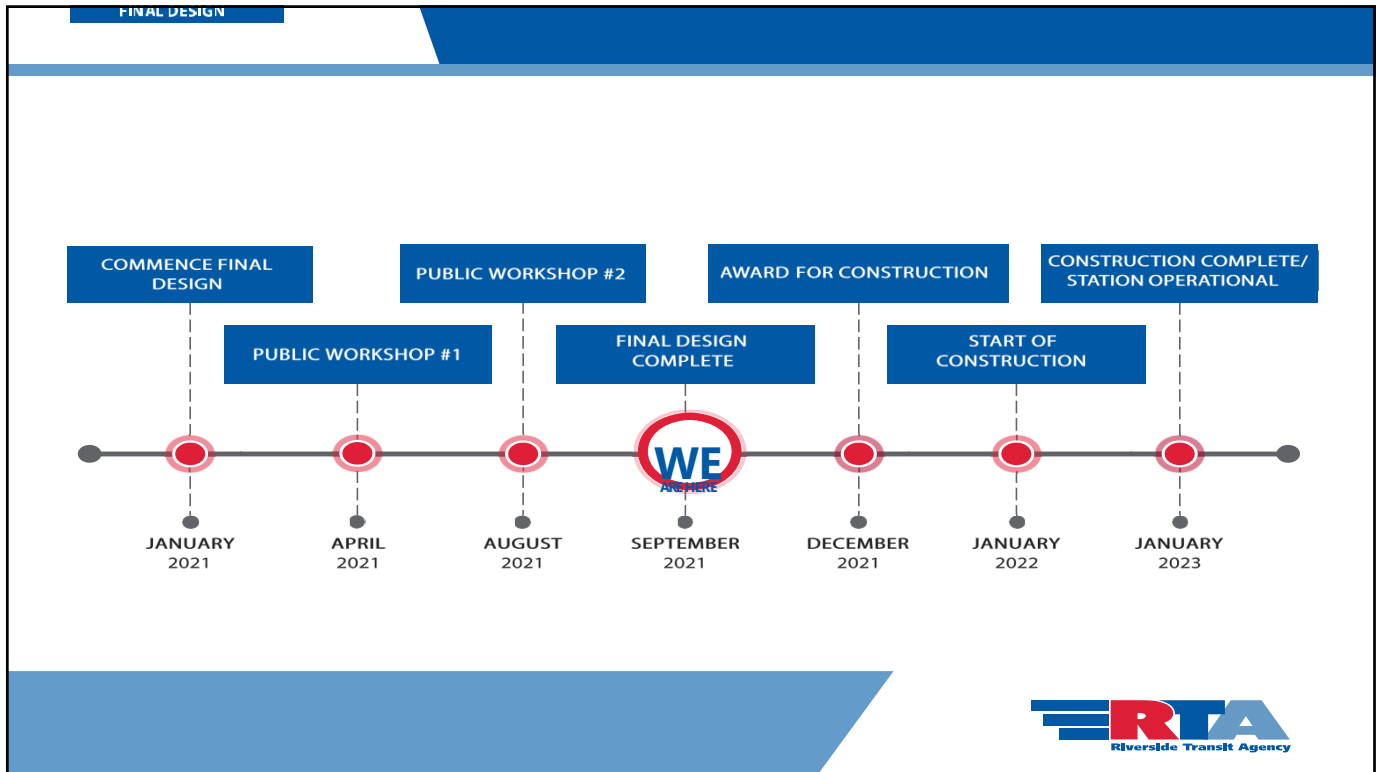
20



21



22



23



24