



1



2

## WHAT IS REDISTRICTING?

After the federal census, electoral district boundaries, including Supervisorial District boundaries, will be redrawn all over the nation to balance the populations in each district based on the census data.

Since the County's last redistricting effort in 2011, several bills were passed which require that certain conditions are met throughout the redistricting process.

The Planning Commission's role as the Advisory Redistricting Commission and the County's approval of district boundaries are only for Supervisorial Districts. Cities will be conducting their own redistricting process for city boundaries.

3

## STATE LAWS

### AB 849

- Fair Maps Act - Allows jurisdictions to establish an Advisory Redistricting Commission and requires that entities are transparent (must hold at least four public hearings/requirements for a dedicated redistricting webpage).

### SB 1108

- A person who is an elected official of the local jurisdiction, or a family member, staff member, or paid campaign staff of an elected official of the local jurisdiction, shall not be appointed to serve on the Commission.

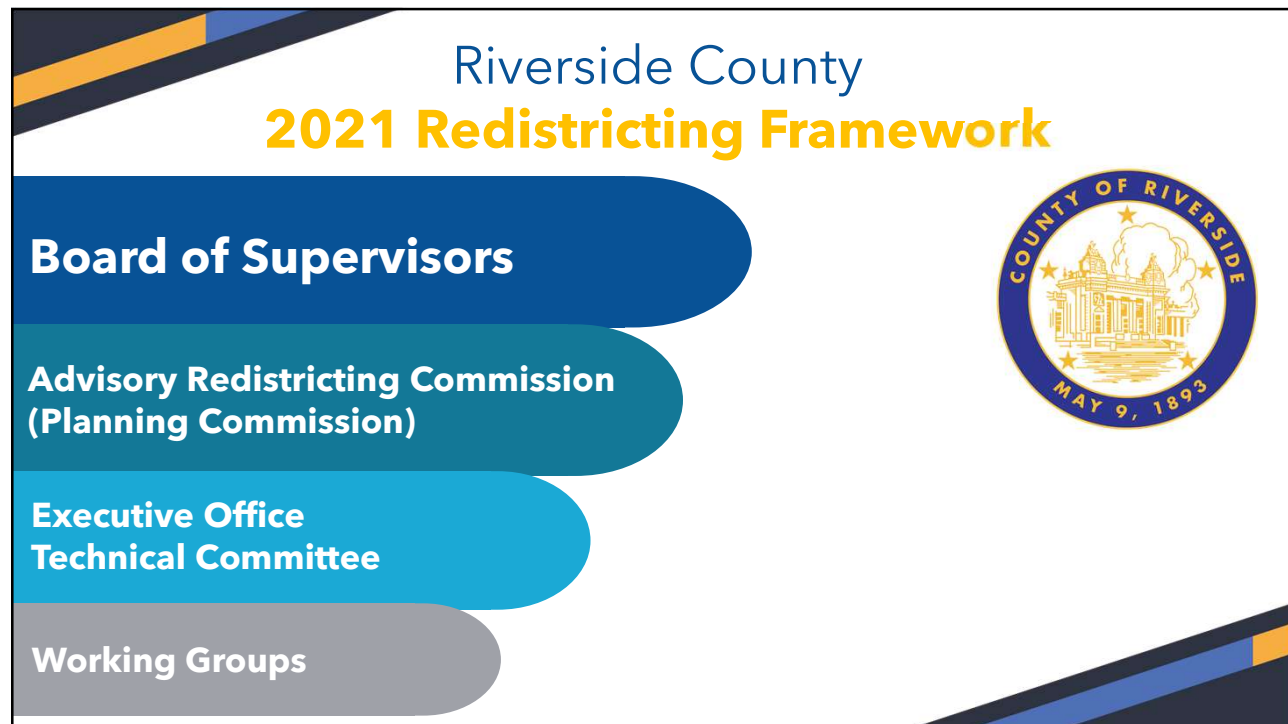
### AB 1276

- Defines when new boundaries must be adopted. ***Deadline for County of Riverside: December 15, 2021.***

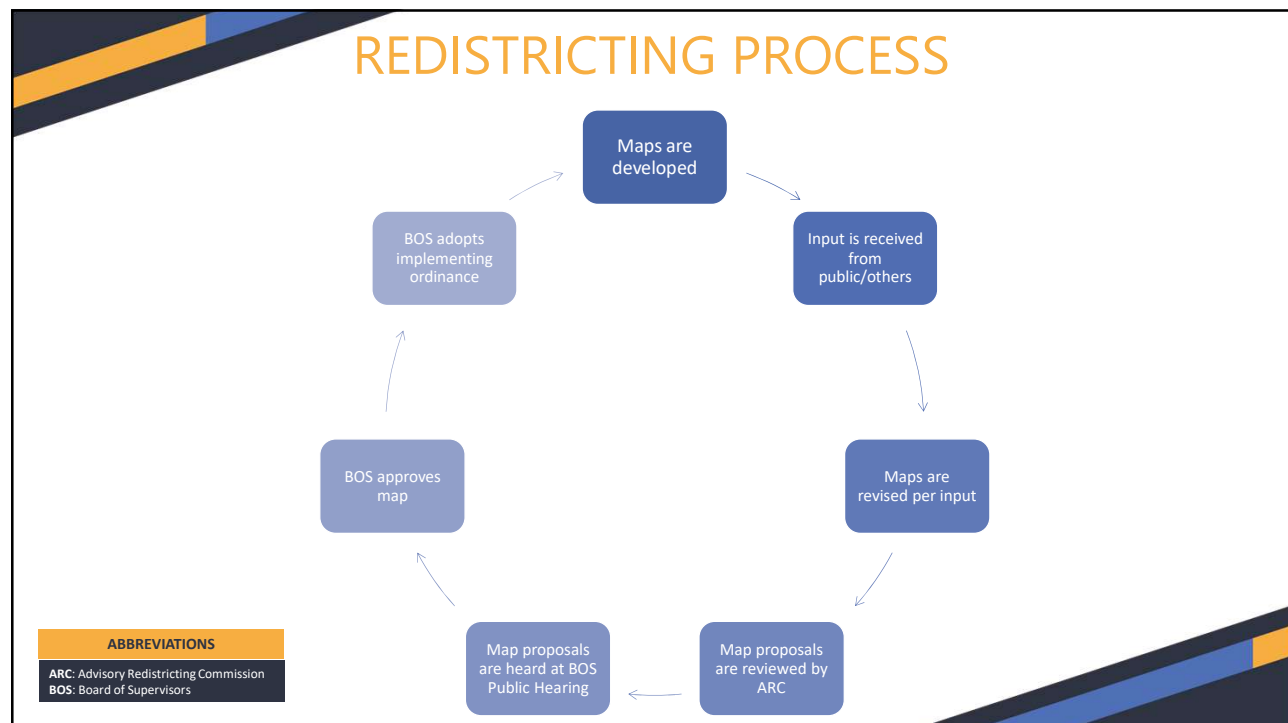
### SB 594

- Allows for adoption of final district boundaries through passage of an ordinance or resolution specifying those boundaries

4

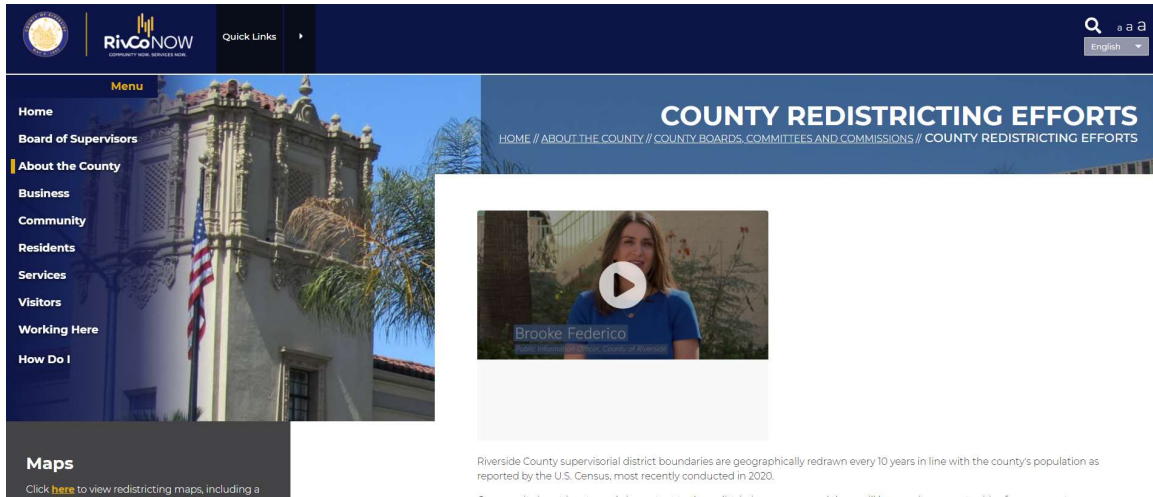


5



6

## REDISTRICTING WEBSITE & VIDEO



The screenshot shows the Riverside County website with a dark blue header. The left sidebar contains a 'Menu' with links: Home, Board of Supervisors, About the County (highlighted), Business, Community, Residents, Services, Visitors, Working Here, and How Do I. Below the menu is a 'Maps' section with a link to view redistricting maps. The main content area features a large banner titled 'COUNTY REDISTRICTING EFFORTS' with a breadcrumb trail: HOME // ABOUT THE COUNTY // COUNTY BOARDS, COMMITTEES AND COMMISSIONS // COUNTY REDISTRICTING EFFORTS. Below the banner is a video player showing Brooke Federico, a representative of the County of Riverside. The video description states: 'Riverside County supervisorial district boundaries are geographically redrawn every 10 years in line with the county's population as reported by the U.S. Census, most recently conducted in 2020. Communities have a voice in the redistricting process, and there will be ongoing opportunities for representation.'

7

## REDISTRICTING SURVEY

**Link:** [Redistricting Survey](#)

**Riverside Redistricting Survey**

Riverside County wants to hear from you: Riverside County is beginning the process of redistricting, which happens every ten years after the U.S. Census. We invite you to submit this survey to help inform the process.

**The County of Riverside is subject to the California Public Records Act (Government Code section 6250, et seq.). All information, including personal contact information, submitted to this survey will be considered a public record subject to disclosure.**

**Directions:**  
All personal information listed on this survey will be considered a public record. Answer the questions to show the boundaries of your community. Use the drawing tool.

**Name**  
Optional, subject to disclosure on public request.

**What do you consider important about your community?**  
(Key Consideration)

☐ Safety & Security

☐ Availability of Services (ex. Healthcare, Shopping, Schools)

☐ Parks and Green Space

☐ Economic Opportunities

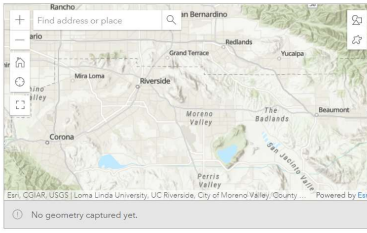
☐ Sense of Belonging

☐ Other

**Are there nearby areas you want to be in a district?**

☐ No ☐ Yes

**Draw one area you want included in a district.**  
For more than one area please submit multiple forms. Use the help link to learn how to use the drawing tool.

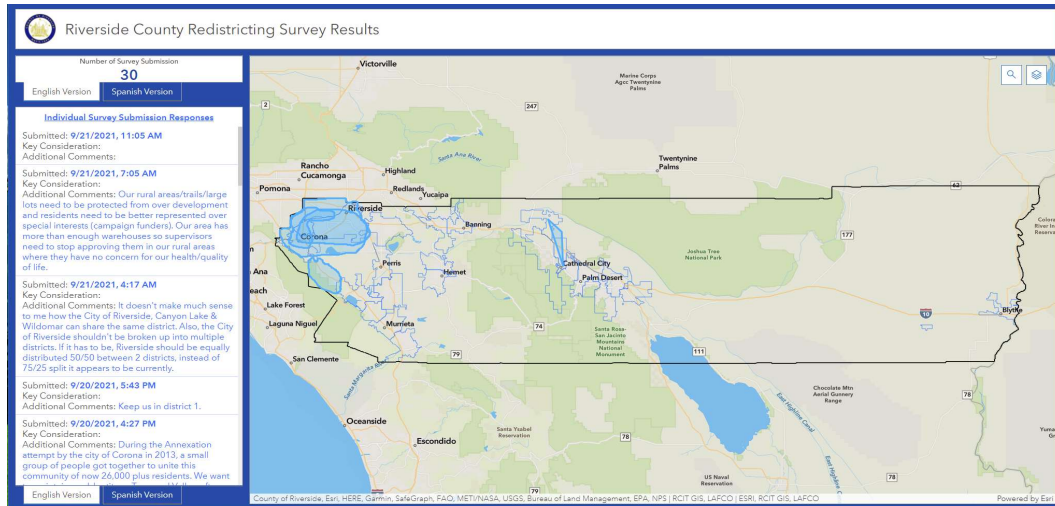


**Comments, what is important to you?**  
Optional, subject to disclosure on public request.

8

# REDISTRICTING SURVEY RESULTS

**Link:** [Redistricting Survey Dashboard](#)



9

## REDISTRICTING INFORMATION & PUBLIC FEEDBACK MECHANISMS

**Riverside County Redistricting Website:** [Link](#)

**Redistricting Survey:** [Link](#)

**Redistricting Email Inbox:** [RIVCORedistricting@rivco.org](mailto:RIVCORedistricting@rivco.org)

**Mail:** Riverside County Executive Office  
4080 Lemon St. 4<sup>th</sup> Floor  
Riverside, CA. 92501

10

# SCHEDULE

Advisory Redistricting Commission Meeting	County Board of Supervisors Public Hearing
August 18, 2021 (Public Hearing)	
September 22, 2021	September 28, 2021
October 6, 2021	October 19, 2021 (Special Mtg)
November 3, 2021	November 9, 2021
	<b>Target Adoption: December 7, 2021</b>
<b><i>Legislative Deadline to Adopt Final Map, Demographics and Legal Descriptions: December 15, 2021</i></b>	

11

# QUESTIONS?

12