

PROJECT UPDATE

City of Riverside
Cultural Heritage Board

October 20, 2021

David Lewis, Capital Projects Manager
Riverside County Transportation Commission

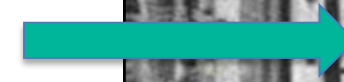


FMC Complex

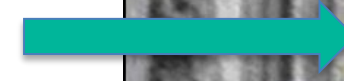
Historic development of FMC Complex



Plant 1 (1938)



Plant 2 (1942)



FMC Plant 1

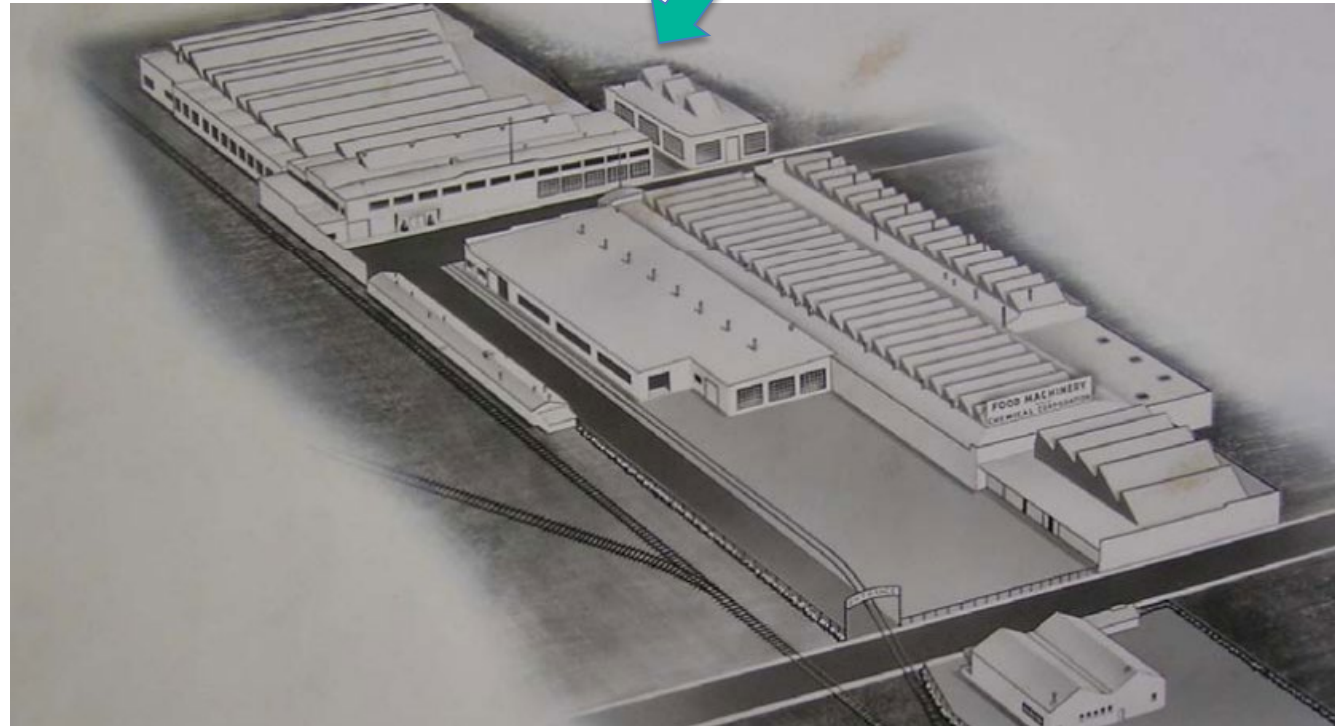
Historic development

- Completed in 1938
- Expanded Over Time
- SoCAL Gas Co. (1950s)
- Ancillary Structures Enveloped



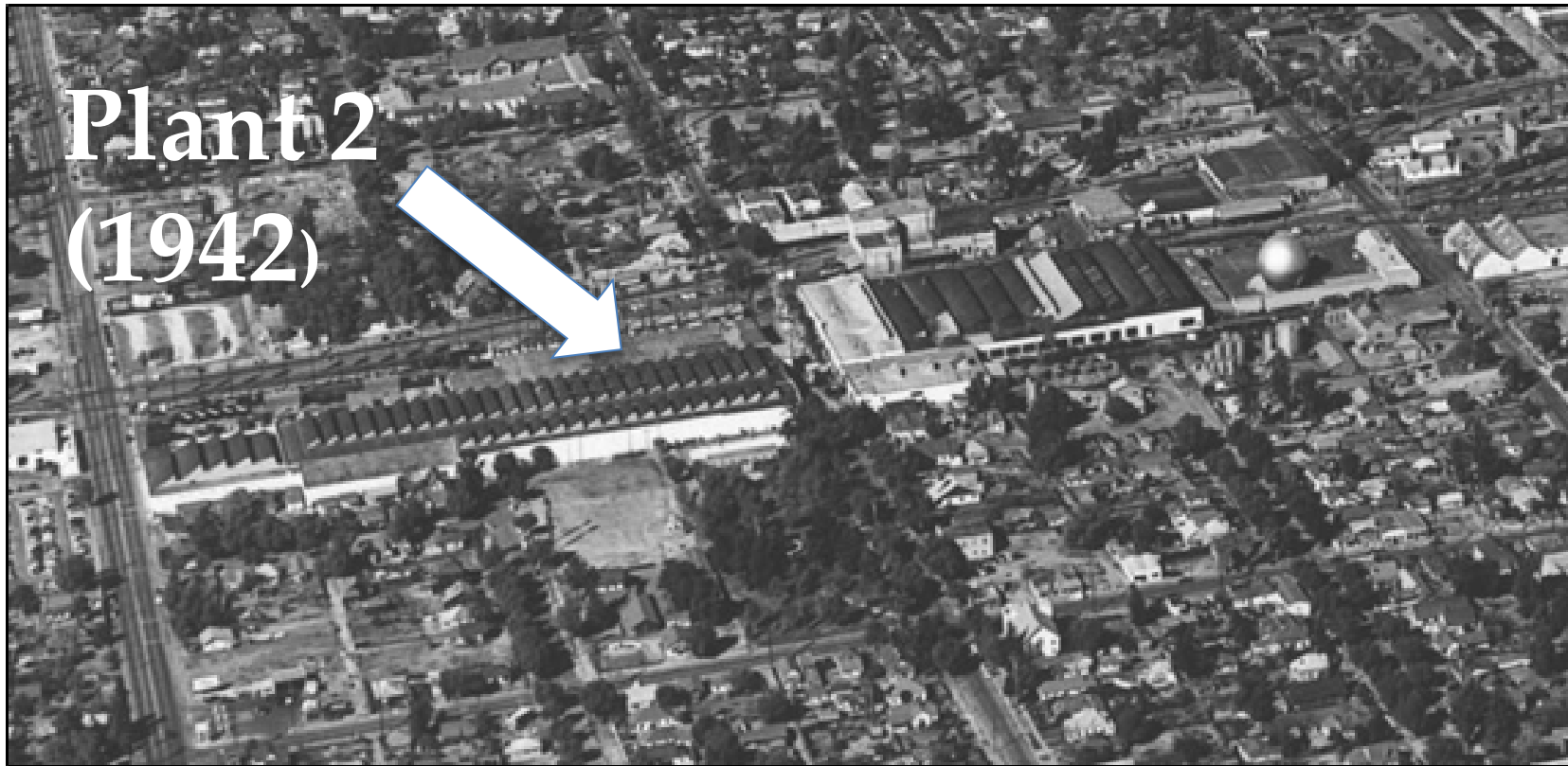
SoCAL Gas Co.
Property

Smaller Buildings
now part of main
Plant 1 building



FMC Complex Plant 2

Historic development



- Completed in 1942-43
- Wartime Production of Amphibious Vehicles (LVT's)
- Altered Over Time
- Solarmax Adaptive Reuse (2012)



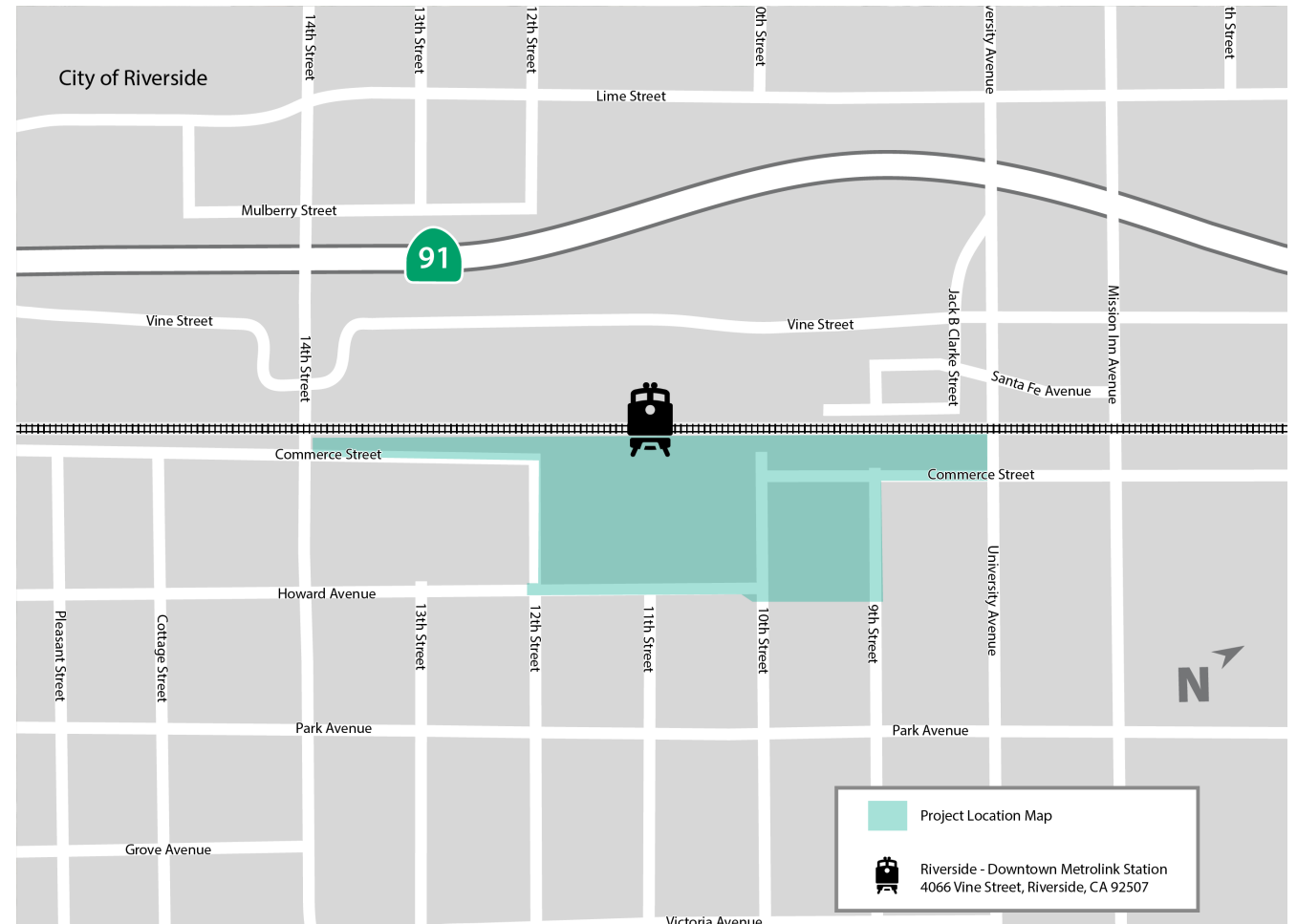
FMC Plant 2

Landing Vehicle
Tracked (LVT)



Location

- Next to Eastside Neighborhood (Commerce St.)
- East of current railroad tracks



Partners & Goals



Partners: RCTC, Metrolink,
Federal Transit Administration

Goals:

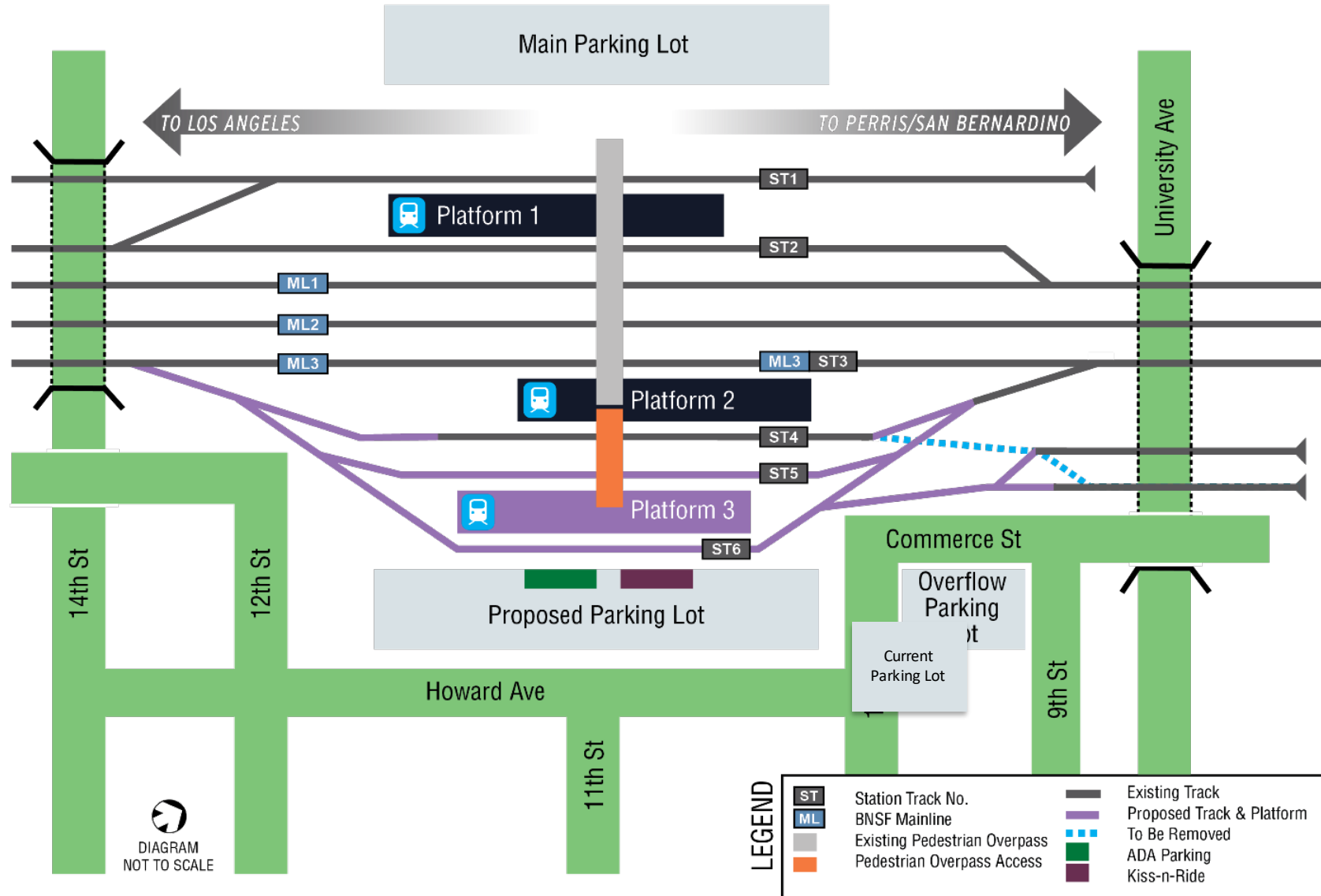
- Improve train operations
- Enhance safety and access
- Encourage transit use

Reducing Delays, Making Connections

- Metrolink shares tracks with freight trains
- Project separates freight and passenger trains
- Convenient connections to other train lines



New Track, Platform, Parking



Safety & Parking Enhancements

- Well-lighted access on east side of station, sidewalks, crosswalks, landscaping
- Extending pedestrian bridge, new stairs and elevators, modifying bus drop-off area
- Relocating ADA parking
- Adding parking spaces



Making Connections

- Station serves 3 Metrolink lines for travel to jobs, schools, entertainment in LA and OC
 - Riverside Line
 - IE/OC Line
 - 91/Perris Valley Line
- Connections to RTA, Omnitrans, Megabus, Amtrak



METROLINK®



Project Schedule



*Dates subject to change

Section 106 Process

- Identification of Historic Properties
- Area of Potential Effects
- Cultural resources identified
- Resources potentially impacted



Plant 1: Adaptive Reuse - Full and Partial Reuse

- Timber frame construction with timber trusses pinned to concrete slab foundation:
 - Alterations required
 - Fireproof materials
 - SOIS standards for rehabilitation
 - All historic character-defining features would be lost



Plant 1: Adaptive Reuse - Full and Partial Reuse

- Nearly 100 years of previous industrial uses left behind hazardous materials
- Extensive environmental remediation would be required
- Partial Reuse would have similar challenges



Plant 1: Mitigation Measures Considered

- HABS Recordation
- Interpretive Displays
- Recycle Building Materials
- Design Features of Plant 1 Incorporated into New Platform Structures
- Oral Histories



FMC Complex

- SHPO concurrence received on NRHP Eligibility
 - FMC Complex is NRHP-eligible under Criteria A, B, C and D
- Section 106 Process
 - Avoidance Alternatives under consideration
 - FTA and RCTC will continue consultation on avoidance and minimization of harm and mitigation

Summary

- Historic properties in the APE determined NRHP-eligible w/ SHPO Concurrence:
 - FMC Complex
 - Howard Ave. Worker's Houses
- Historic resources impacts are being evaluated
- Avoidance Alternatives are being considered
 - Seven avoidance alternatives
 - Full and Partial Adaptive Reuse
- Draft Environmental Document
 - Public Circulation of Draft EIR/EA: Fall/Winter 2021

Stay Connected



rctc.org/riversidestation



951.787.7141



info@rctc.org



@theRCTC





QUESTIONS

