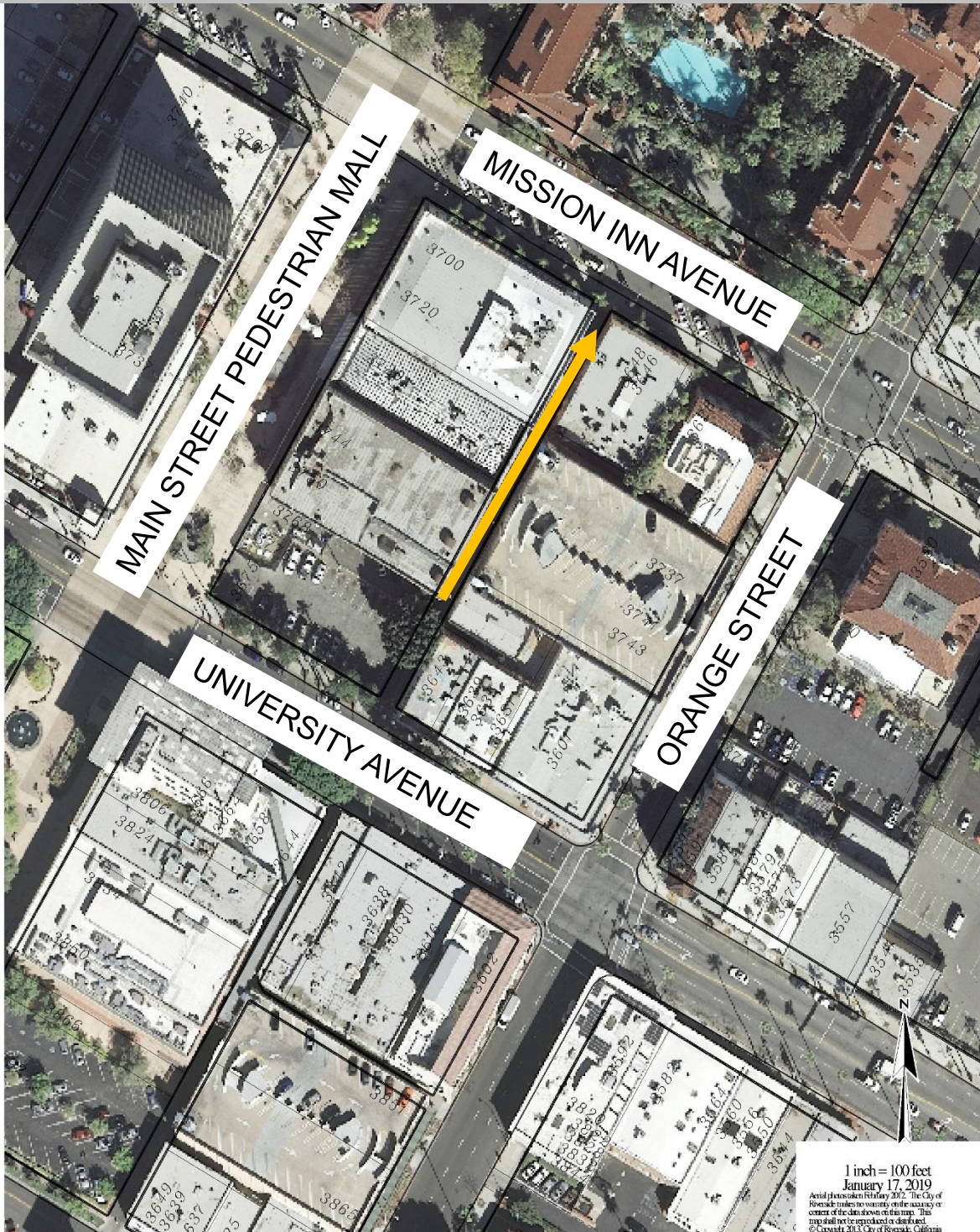


# ALLEY BETWEEN MISSION INN AND UNIVERSITY AVENUES AND ORANGE STREET AND THE MAIN STREET PEDESTRIAN MALL – CONVERSION OF PORTION TO ONE-WAY TRAVEL

— One-Way Northbound Travel Designation



1 inch = 100 feet  
January 17, 2019

Aerial photos taken in February 2012. The City of Riverside makes no warranty on the accuracy or content of the data shown on this map. This map shall not be reproduced or distributed. © Copyright 2013 City of Riverside, California. Printed by: H&J, LLC