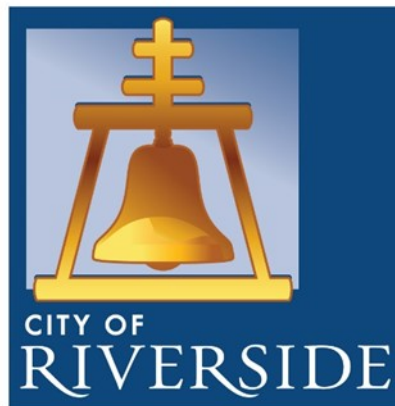


BID TABULATION

AUTOMATIC ELECTRONIC CIRCUIT RECLOSERS

RFB No. 7861



City of Arts & Innovation

**ISSUED BY
THE CITY OF RIVERSIDE
FINANCE-PURCHASING DIVISION FOR:**

Central Stores
8095 Lincoln Avenue
Riverside, CA 92504

BID RESPONSE DUE

AUGUST 2, 2021 BEFORE 3:00PM PST

BID TABULATION

CITY OF RIVERSIDE

Bid Results for Project AUTOMATIC ELECTRONIC CIRCUIT RECLOSERS (7861)

Issued on 07/19/2021

Bid Due on August 02, 2021 3:00 PM (PDT)

LINE #	ITEM #	DESCRIPTION	UOM	QTY	ANIXTER INC.		G&W ELECTRIC COMPANY	
					UNIT PRICE	LINE TOTAL	UNIT PRICE	LINE TOTAL
1	10013449	RECLOSER, 3PHASE, 15 KV, AUTOMATIC, SOLID DIELECTRIC, ELECTRONICALLY CONTROLLED, POLEMOUNTED, PER CITY OF RIVERSIDE SPECIFICATION NO 1-3.81 REV 3, DATED 01/06/2021.	EA	6	\$27,922.72	\$167,536.32	\$42,287.00	\$253,722.00
Planet Bids Total					\$167,536.32		\$253,722.00	
Tax					\$14,659.43		\$22,200.68	
Total					\$182,195.75		\$275,922.68	
					NONRESPONSIVE Per engineering evaluation, alternative item does not meet qualifications of Spec. 1-3.81 Rev 3		WINNER	

VENDOR BIDS

Customer:	Riverside
Date:	August 2, 2021
Validity:	30 Days
Quotation Number:	SQ-63474B
Customer Reference:	

Item 1: G&W Electric Viper-S Solid Dielectric Recloser, Catalog No. VIP378ER-12S

Qty: 6

Standard Features:

- Three (3) epoxy insulated vacuum interrupter modules
- One (1) three phase magnetic actuator operator, providing three phase operation
- Manual trip and lockout handle with mechanical block, capable of physically blocking electronic and manual operation
- Contact position indicator
- Three (3) 1000/500:1 (factory set to 1000:1) current transformers, encapsulated within the solid dielectric insulation, exclusively for use with the recloser control
- Lifting provisions

Additional Features:

- Z-shaped vacuum interrupter modules
- Six (6) 800A deadbreak Apparatus Bushing per IEEE 386 interface 13
- Six (6) 15kV screw-on silicone insulators
- Aerial lugs included: clamp type for #2-500 MCM overhead conductor
- Six (6) capacitively coupled voltage sensors, encapsulated within the solid dielectric insulation, exclusively for use with the recloser control.
- 50-foot 19 pin control cable connectorized on both ends
- 50-foot 8 pin voltage sensing cable connectorized on both ends
- Galvanized Steel **alley** arm frame, with provisions for lightning arrester mounting
- No potential transformer included
- Six (6) wildlife protectors Two (2), Solid dielectric potential transformers suitable for phase to phase connection on a 12kV phase to phase system included and shipped loose with requested equivalent PT bracket for customer use
- Two (2) 50 foot potential transformer secondary cable with connectorized connector included for control side
- High-side PT fuse (12 Amp current limiting Hi-Tech HTDE24J012 or equivalent) included with wildlife protectors
- **Custom SEL Control per RCC 21-1337:** Base MOT 0651R24CXGAXAE2122XXXX with AC Transfer Switch, SEL-2401 Satellite-Synchronized Clock (24010XXX0) on Accessory Shelf, SEL 3505 RTAC (3505#9M2N) and GE MDS Orbit ECR 9000MHz Ethernet Transceiver (ECRU91NNNNNS1S1USUNNN) on Accessory Mounting Plate, 8-Position Pin

Contact Receptacle for Voltage Inputs (MS5015, Size 22), and (2) 3 Position Pin Contact Receptacles for Input Power (MS26482, Size 12)

Ratings:

Maximum design voltage	15.5kV
Impulse level (BIL)	110kV
Continuous and load break current	800A
8 Hr. Overload at 20°C	960A
60Hz Withstand, kV rms Dry, 1 min	50kV
60Hz Withstand, kV rms Wet, 10 sec	45kV
Interrupting Rating RMS (kA)	12.5kA
Making Current, RMS, asym, KA	20kA
Peak, asym (kA)	32kA
Short Circuit Current, kA sym, 3 second	12.5kA
Mechanical Operations	10K

Operating Temperature Range: Temperature range, -40°C to +65°C (-40°F to 150°F)

Standards: Ratings per IEEE C37.60-2012 and IEC 62271-111

Price Each: \$42,287

Exceptions/Clarifications:

- This quotation was prepared without reference to a formal plan and specification package. G&W's offering for this quotation is limited to the equipment and bill of materials listed in this quotation. If formal plans/specifications are available for this project, please send to G&W to evaluate and revise this quotation accordingly. All other materials are provided by others
- Solid dielectric PTS push leadtime to 23 weeks
- 2.1: G&W manufactures and test to ANSI/IEEE C37.60 - 2012. Exception taken to future reference of latest version of C37.60
- 2.6.3: G&W has a dedicated AfterMarket support team for any warranty issues. Lead time for replacement may vary based on warranty issue.
- 3.3: SEL provided sat clock will be 24010XXX0, per customer confirmation on 2/22
- SEL MOT modified, requested MOT was for a Viper-ST
- SEL warranty per SEL T&C
- SEL clarification: The customer did not specify an external coaxial cable between the Polyphaser surge protector IS-B50LN-C2 and the Laird YB8966 antenna
- 4.1: Weight dependent on design
- Additional drawings may be required to supply equivalent PT bracket
- Dual secondary voltage not provided on this quote.
- Low side fuse included in SEL control for power supply to control is 10A. Additional low side fuse not provided.
- G&W has previously approved Terms and Conditions with the City of Riverside which do not include non-payment or Liquidated damages.

Commercial Terms and Conditions

Lead Time

- **Submittal drawings (if required):** Submittal drawings and wiring diagrams will be issued for approval after receipt of order
- **Lead time for shipment:** Lead time is estimated after receipt of order and release to production. Lead time subject to change based on factory capacity at time of order
See drawing lead time tracker below for detailed information

Shipping Terms: FOB-**Destination**, Bolingbrook, IL USA

Freight: Prepaid and Allowed on a standard closed top trailer

Payment: Net 30 days from time of invoice; Payment terms are subject to G&W Finance Department approval

Purchase Order Submission: Purchase order should be addressed to:

G&W Electric Co.
305 W. Crossroads Parkway
Bolingbrook, IL 60440-4938

Terms & Conditions: Warranty and all other terms and conditions are as per SM-F-1 Rev 6



Scope of Supply

Item	Product Name	Quantity	Unit price	Total price
1	15kV-800A-12.5kA Pole Mount Recloser w/651R Controller	6.00	\$27,922.72	\$167,536.32

See "System Specifications and General Bill of Material" section in this proposal for greater detail.

Unrestricted information

This proposal, including all of its attachments, exhibits, appendices, etc. ("Proposal"), is provided "as-is" for your evaluation of Siemens Industry, Inc. ("Siemens") as the provider of work discussed therein and contains information that is Unrestricted to and solely owned by Siemens. Your acceptance, viewing or storage of this Proposal is an acknowledgment of a Unrestricted relationship between you and Siemens. We require that this Proposal be returned or destroyed when no longer required for the purpose identified herein. This Proposal and any information obtained from this Proposal may not be re-produced, transmitted, disclosed or otherwise used, in whole or in part, without the prior written authorization of Siemens. THE ABOVE TERMS SUPERSEDE ANY CLICK-WRAP OR OTHER TERMS NOT EXPRESSLY SET FORTH IN A SIGNED AGREEMENT BETWEEN THE PARTIES COVERING THE PROPOSAL. ALL SUCH CLICK-WRAP OR OTHER TERMS ARE EXPRESSLY REJECTED BY SIEMENS.

SF201669780

BID SPECIFICATIONS

EXHIBIT C

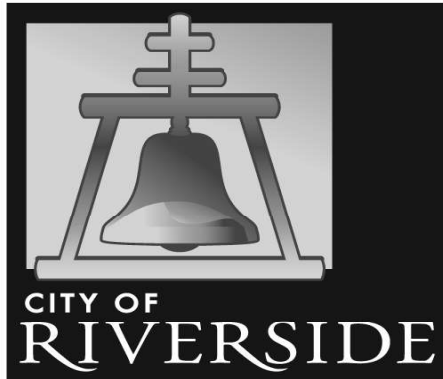
PRODUCT INFORMATION

Please provide the estimated product lead times.

#	City Stock Number	City Stock Specifications	City UOM	City Anticipated Quantity	Company Lead Time (Business Days)
1	10013449	RECLOSER, 3PHASE, 15 KV, AUTOMATIC, SOLID DIELECTRIC, ELECTRONICALLY CONTROLLED, POLEMOUNTED, PER CITY OF RIVERSIDE SPECIFICATION NO 1-3.81 REV 3, DATED 01/06/2021.	EA	6	/Business Days

EXHIBIT E
SPECIFICATION NO. 1-3.81 REV. 3

W A T E R | E N E R G Y | L I F E



P U B L I C U T I L I T I E S

TRANSMISSION & DISTRIBUTION, ENERGY DELIVERY
RIVERSIDE, CALIFORNIA

SPECIFICATION NO. 1-3.81 (Revision 3)

FOR

15 KV, THREE-PHASE
POLEMOUNTED AUTOMATIC ELECTRONIC CIRCUIT
RECLOSERS

Approved By
The RPU T&D Standards Committee
January 2021

Revised By: Jose Solano

Approved By: Rudy Villavicencio
Principal Electric Engineer

1/06/2021
Date

SPECIFICATION FOR 15KV, THREE-PHASE POLEMOUNTED AUTOMATIC ELECTRONIC CIRCUIT RECLOSERS

1.0 SCOPE

1.1 Purpose

This Specification covers the engineering requirements for 15 kV, three-phase, automatic, electronically controlled, pole-mounted circuit reclosers.

1.2 Definitions

- 1.2.1 The term "Manufacturer" is used interchangeably with supplier and bidder.
- 1.2.2 The term "RPU" is used to represent The City of Riverside Public Utilities.
- 1.2.3 "Specification" is defined as this document.
- 1.2.4 "Certified Test Results" is used to describe those test results, which are certified by the Manufacturer to be true and correct. Certification requires the signature of the Manufacturer's representative that is responsible for overseeing all the tests made on the reclosers supplied in accordance with this Specification.
- 1.2.5 "T&D Standards Committee" is RPU's Transmission and Distribution Standards Committee.

2.0 CONFORMANCE

2.1 Applicable Standards

The circuit reclosers manufactured in accordance with this Specification shall meet or exceed the applicable requirements of the latest revision of ANSI C37.60.

2.2 Approval

- 2.2.1 Only circuit reclosers, which have been approved by RPU's T&D Standards Committee, are acceptable.
- 2.2.2 Approved circuit reclosers are those which have been satisfactorily tested to industry standards and are recommended by other satisfied users.
- 2.2.3 Manufacturers requesting approval of a circuit recloser shall submit a written request for approval to RPU. The request shall include a description of the recloser for which approval is requested, supplementary data and Certified Test Reports, and the completed "Circuit Recloser Manufacturer's Questionnaire" included in Appendix A of this Specification.

2.3 Deviation and Non-Conformance

- 2.3.1 RPU shall be notified, in writing, of any proposed or actual deviation from the requirements of this Specification before reclosers are shipped to RPU.
- 2.3.2 Any deviations from this Specification must be approved, in writing, by RPU prior to acceptance of the reclosers.

2.4 Rejection

Non-conformance to any of the requirements of this Specification shall be reason for rejection, non-payment and liquidated damages.

2.5 Liquidated Damages

Purchase Orders will, based upon the delivery time quoted by the Manufacturer in response to the RPU's Request for Quotation, include a specific date by which the reclosers must be delivered to RPU. Failure to deliver the reclosers by that specified date, whether due to late delivery or non-conformance of delivered reclosers with the Specification, will result in the Manufacturer's forfeiture of \$50 per day to RPU for each day delivery is delayed beyond the specified date. This liquidated damage provision is included herein under the authority of California Government Code Section 53069.85 which states:

"The legislative body of a city, county, or district may include or cause to be included in contracts for public projects a provision establishing the time within which the whole or any specified portion of the work contemplated shall be completed. The legislative body may provide that for each day completion is delayed beyond the specified time, the contractor shall forfeit and pay to the agency involved a specified sum of money, which may be deducted from any payments due or to become due to the contractor. The sum so specified is valid as liquidated damages unless manifestly unreasonable under the circumstances existing at the time the contract was made. A contract for such a project may also provide for the payment of extra compensation to the contractor, as a bonus for completion prior to the specified time. These provisions, if used, shall be included in the specifications upon which proposals or bids are received, which specification shall clearly set forth the liquidated damages provisions.

For purposes of this section, 'public project' shall include the erection, construction, alteration, repair, or improvement of any structure, building, road, railway, or other improvement, and the procurement of any other goods, or services that are manufactured specifically, designed specifically, or produced specifically, pursuant to a contract with a public agency."

2.6 Removal from the Bidder List

Any of the following conditions may be reason for removing a Manufacturer from the approved bidder list:

- 2.6.1 Failure to meet City's required delivery date in three (3) procurements.
- 2.6.2 Failure to comply with the technical requirements of this Specification.
- 2.6.3 Failure to replace defective reclosers within three (3) weeks after being notified, or within time limits approved by RPU's staff.

2.7 Certification of Ratings

The Manufacturer of the reclosers shall be responsible for the compliance of the reclosers with the requirements of this Specification and the referenced Standards. The Manufacturer shall furnish, upon request, a certification of ratings of the reclosers.

3.0 GENERAL REQUIREMENTS

3.1 Electrical Ratings

The electrical ratings shall be as designated below:

Three-phase	
Voltage Rating, kV.....	15.5
Rated Frequency, Hz	60
Continuous Current Rating, Amps.....	800
Interrupting Current Rating, Amps.....	12,500
BIL, kV.....	110
Momentary Current, Asym. Peak, kA ...	32

3.2 Mechanical Rating

The recloser shall be designed to have the capability of performing at least 10,000 open/close operations.

3.3 Control Cabinet

- a. The control cabinet shall be rated for outdoor use with lockable and hinged door.
- b. The recloser shall be controlled using Schweitzer SEL-651R-2 with part number *0651R22CXGAXAE2122BAXX*.
- c. The control unit shall communicate through one GE MDS Orbit ECR 9000 MHz Ethernet transceiver radio equipped with 1 Serial port, and a Standard port. Order Code *ECRU91NNNNNSISIUSUNNN* and a Laird Technologies Yagi Antenna part # *Y8966*.

- d. One Schweitzer SEL-2401 satellite-synchronized time clock equipped low-profile GPS antenna part number 24010XXX2 and configuration number 2401#0101.
- e. One Schweitzer SEL-3505 Real-Time Automation Controller (RTAC) with four serial ports and two ethernet ports, configuration number 3505#9M2N.
- f. The 651R-2 shall be connected via RS-232 serial connection to the RTAC.
- g. The RTAC shall be connected via ethernet connection to the radio.
- h. The GPS clock shall be connected to the IRIG-B time synchronization port of the RTAC.
- i. The control cabinet shall have shelves for mounting the radio, GPS, RTAC, relay. The recloser is not equipped with SEL-FT50 and SEL-FR12 system but shall have a provision shelf for mounting these devices.
- j. Integrated 12 VDC battery charger and 40Ahr batteries for dead-line operation. Using the batteries located in the control for operation of the recloser if AC input power is lost.
- k. Operator control panel with manual locking provision that shall have the following control features: ground disable/enable, reclose enable/disable, remote enable/disable, alternate setting switch, trip, close, and two programmable control options. The panel shall have indication for the following: AC supply, battery problem, control enable, trip, fast curve trip, high current trip, reset, under frequency trip, reset, lockout, targets, and sensitive earth fault element trip.

4.0. CONSTRUCTION

4.1 Compact, Lightweight Design

The recloser shall be compact and of lightweight design. The weight shall not exceed 500 lbs.

The construction requirements shall be in accordance with the latest edition of ANSI/IEEE C37.60.

4.2 Insulation and interruption mediums

The insulation and interruption mediums shall be as follows:

- a. Insulation: Solid dielectric epoxy.
- b. Interruption: Vacuum. SF6 gas and oil are **not** acceptable for insulation and interruption mediums.

4.3 Control Cable.

The control unit shall be mounted separately from the recloser and interconnected by a harness type control cable, at least 50 feet long.

4.4. Manual Control

The recloser can be mechanically tripped and locked out by means of an external handle, which can be operated from ground level by a hook stick.

4.5. Pole Mounting Bracket

The recloser shall have a complete pole-mounting bracket.

4.6 Arrester Mounting Bracket

The recloser shall have a complete arrester-mounting bracket for load and line side arrester mounting.

4.7 Recloser Bushings

The recloser shall be supplied with either silicone or Hydrophobic Cycloaliphatic Epoxy bushings. Porcelain bushings are **not** acceptable. Bushings shall be in the “Z” Configuration. Refer to construction views.

4.8 Recloser Voltage Sensing

Recloser shall be supplied with six (6) internal Low Energy Analog (LEA) voltage sensors. Three (3) on the Y Bushing and three (3) on the Z Bushing.

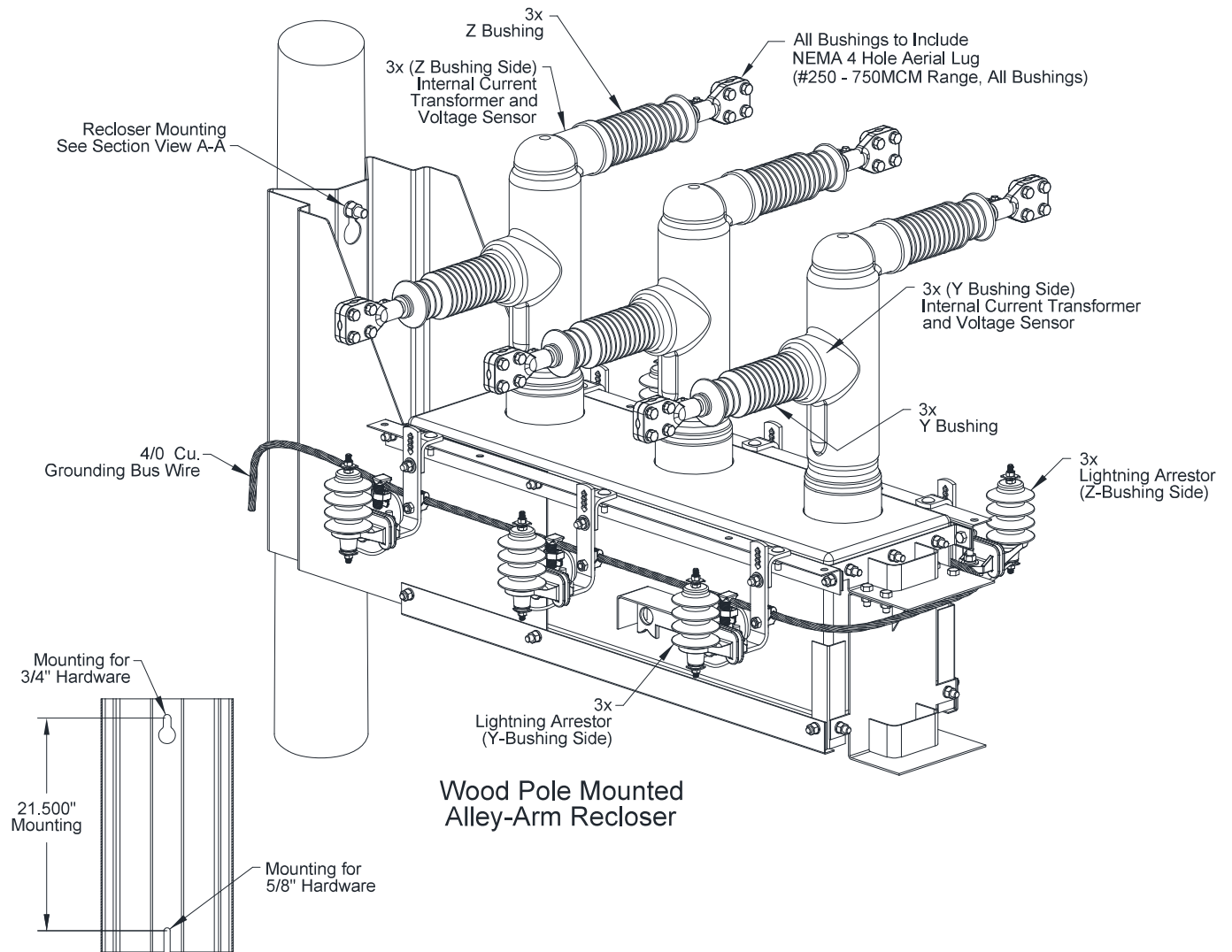
4.9 Potential Transformers

Recloser shall be supplied with two (2) solid dielectric dry type potential transformer rated 1kVA with a 10” x 12” bolt pattern. Each transformer shall be supplied with two (2) high side bushings to be connected phase to phase at 12kV. Secondary voltage shall be 120/240V. Refer to drawings below for additional details. The potential transformer shall be supplied with high side and low side fuses. High side fuses shall be a 12 Amp current limiting Hi-Tech HTDE24J012 or equivalent. High side fuse shall also be supplied with an avian protection cover. Low side fuses shall be Bussmann 25CIF2 25A, ferrule connection 13.8 mm x 54.5 mm, 600V, Bolt-On type, or equivalent. Potential transformer shall each be supplied with a mounting bracket to install on a crossarm. Bracket shall be a Scott Engineering ES-288 or equivalent, refer to attached drawing.

4.10 Recloser Current Transformers

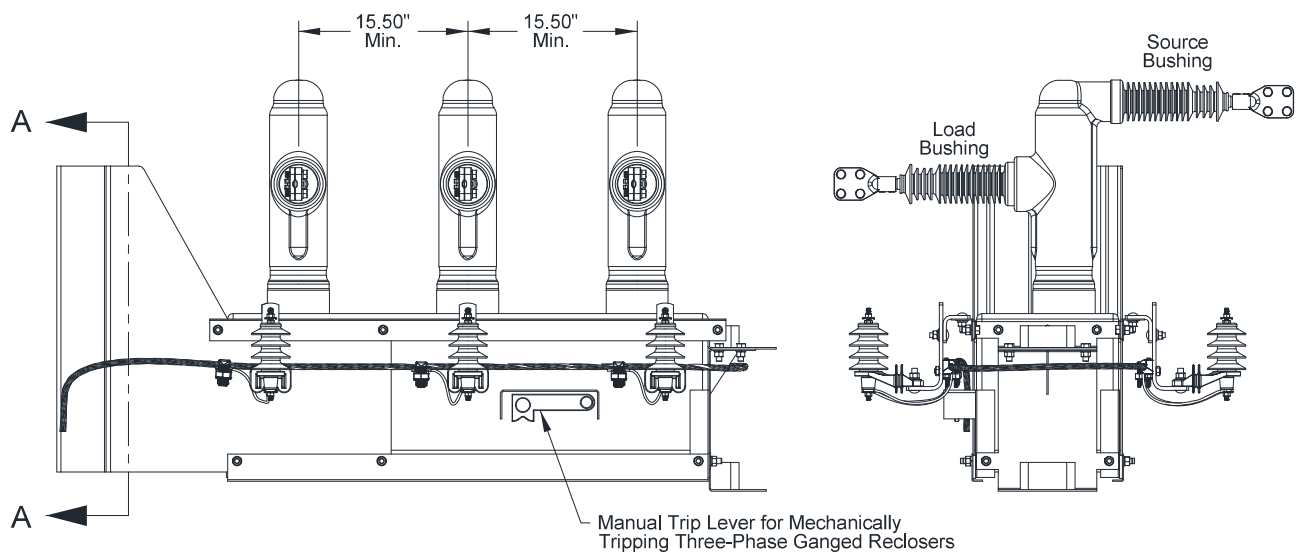
Recloser shall be supplied with 1000/500:1 ratio on each phase. CT ratio to be shipped at 1000:1 ratio from factory.

Please refer to these drawings for typical recloser construction views.

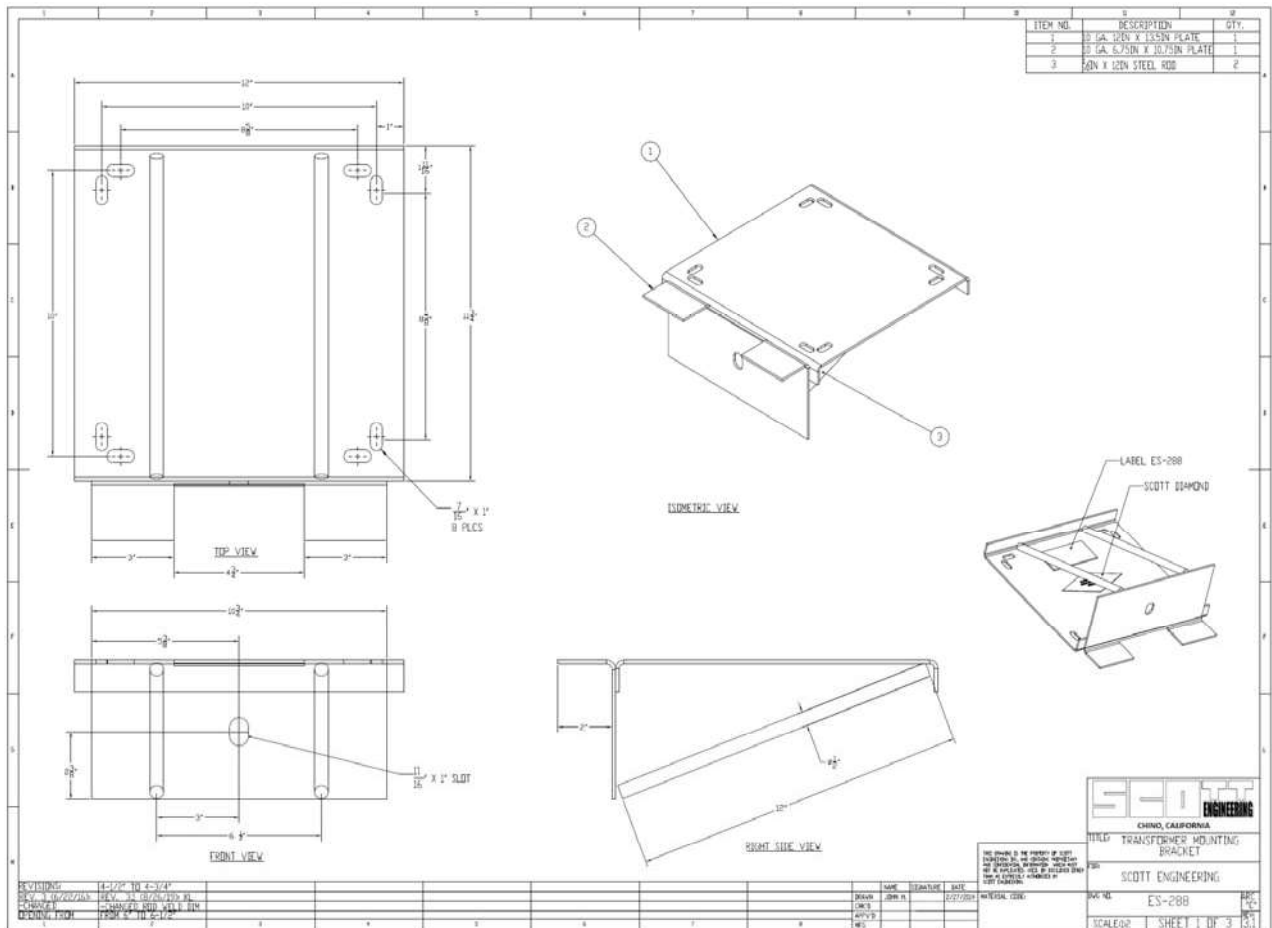


Wood Pole Mounted Alley-Arm Recloser

Section View A-A
(Wood Pole Mounting Plate)



Z Bushing Configuration



5.0 DATA FURNISHED BY BIDDERS

Each bid proposal shall include:

5.1 *Specifications*

Specifications must contain detailed descriptions and general drawings including overall dimensions, photographs or cuts of any information which the bidder proposes to furnish and of the materials to be used in the construction of the recloser.

5.2 *Operation and maintenance booklets.*

5.3 *Recloser's Users List*

A recloser's users list shall include names of the companies, names and telephone numbers of the persons who were directly responsible for buying the reclosers.

6.0 BID REJECTION AND ACCEPTANCE

The City of Riverside reserves the right to reject any or all bids, and to accept the bid or bids, which in their sole and absolute judgment, will, under all circumstances, best serve the interest of the City.

7.0 WARRANTIES

Warranties shall be as specified by the Manufacturer, except the City of Riverside shall pay no freight charges either way on warranty repairs.

7.1 Recloser's Warranty

The required minimum warranty period of the recloser shall be one year from date of installation or eighteen months from date of delivery. Substantial differences in the warranty as specified by the Manufacturer may be factored into the evaluation and award.

7.2 Control Unit's Warranty

The required warranty period of the control unit shall be a minimum of 10 years.

8.0 SHIPMENT AND DELIVERY

Deliveries shall be made per delivery schedule shown on the quotation request. The reclosers shall be delivered on pallets so that they can be lifted by forklift. All shipments shall be F.O.B. Riverside and properly directed to the City of Riverside Corporation Yard, 8095 Lincoln Avenue, Riverside California 92504. The supplier shall be held responsible for all delays or demurrage charges due to lack of proper or incomplete address. The supplier shall not be held responsible for delays due to strikes, fire, floods or other causes clearly beyond his control. The City of Riverside Public Utilities will furnish a crew and necessary equipment during normal working hours for unloading at the City's storage yard. Forty-eight hours advance notice of delivery is required. Call the Central Stores Supervisor at (951) 351- 6115.

9.0 APPROVED MANUFACTURERS

9.1 Recloser Approved Manufacturers

- G&W Electric Co.

9.2 Control Unit Approved Manufacturer

- Schweitzer Engineering Laboratories, Inc.

APPENDIX A
RECLOSURE MANUFACTURER'S QUESTIONNAIRE

QUESTIONS	RESPONSES
Number of consecutive years manufacturing 15kV three-phase pole-mounted circuit reclosers for installation by electric utilities operating in the United States of America	
Number of 15kV three-phase pole-mounted circuit reclosers sold in the past five (5) consecutive years to electric utilities operating on the United States of America.	
Number of consecutive years manufacturing the proposed model. How many have been sold to electric utilities operating in the United States?	
Do you take any exceptions to City of Riverside's Specification No. 1-3.81? If yes, list all the exceptions. (Use separate sheet if necessary)	
Are the parts used on the pole-mounted circuit reclosers manufactured by your organization or by other companies? List any parts made by other companies with their names.	
Manufacturing plant: - Its location - How long has it been in operation? - Are there plans for upgrading the equipment?	
Name of the contact person, name of the company, and telephone number of three (3) electric utilities customers that are members of the Western Underground Committee and that have purchased 15kV three-phase pole-mounted circuit reclosers from your organization in the past five (5) years.	Contact person name: Company name: Telephone: Contact person name: Company name: Telephone: Contact person name: Company name: Telephone:

Company name: _____ Date: _____

Name of person filling out this questionnaire: _____

Title: _____

Telephone: _____