



RPM
 REGISTERED PROFESSIONAL ENGINEER
 S. NATHAN
 No. 015996
 License No. 15173
 State of California
 06/07/2024

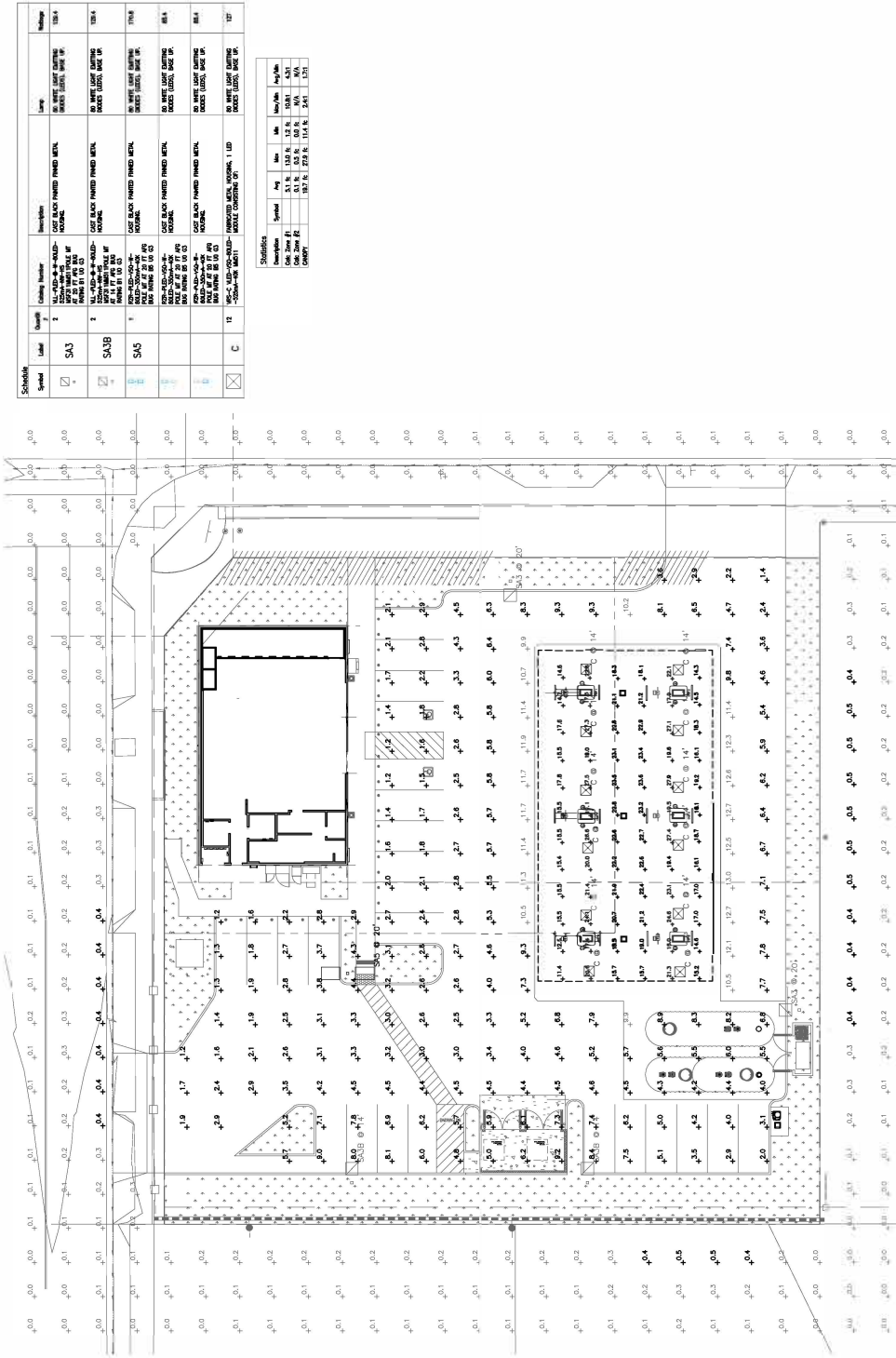
Job#:	Scale: AS NOTED
Drawn By:	Date:
Checked By:	

MO.JPG



7-ELEVEN, INC.
 3200 HACKBERRY ROAD, IRVING, TEXAS 75063
7-ELEVEN #1055668/2410
 3696 VAN BUREN BOULEVARD
 RIVERSIDE, CA 92503
SITE PHOTOMETRIC

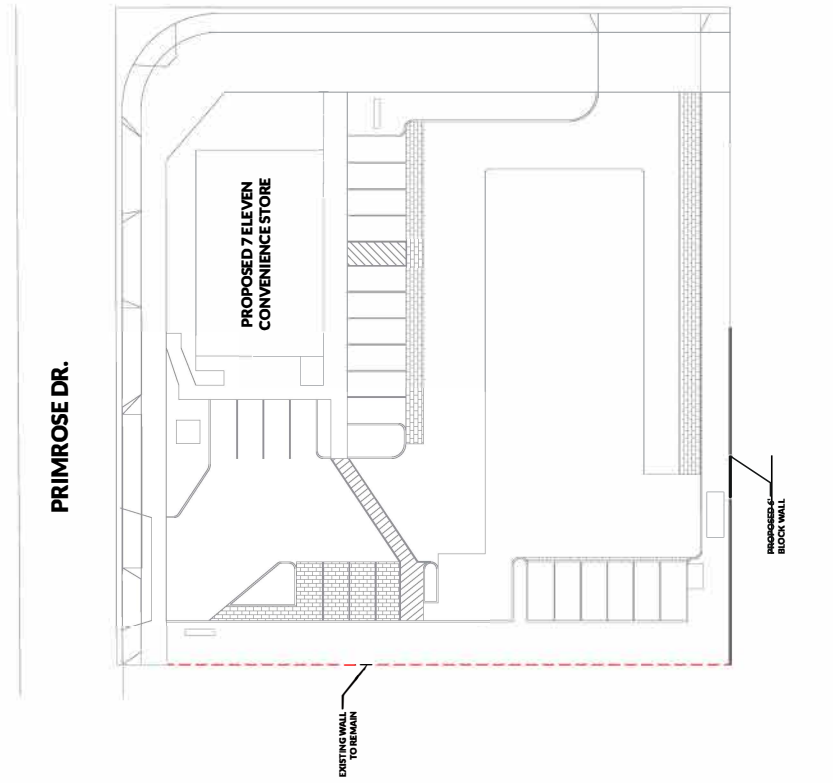
Rev #	Date	Description
1	04/24/24	ORC PLANNING/TRAFFIC WORKS
2	05/08/24	PLANNING/TRAFFIC WORKS
3	06/27/24	LIST REVISION



SITE PHOTOMETRIC PLAN
 SCALE 1/8"=1'-0"

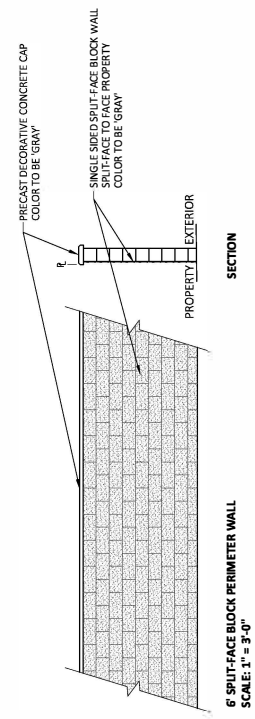
Statistical	Area	Min	Max	Min/Max
Overall	31.7	13.7	13.7	0.0
One Zone	13.7	13.7	13.7	0.0
Two Zone	18.0	13.7	13.7	0.0
Overall	31.7	13.7	13.7	0.0

Schedule	Label	Quantity	Code	Description	Material	Notes
SA3	SA3	1	SA3	1/2" BLACK PAINTED FINED METAL	1/2" BLACK PAINTED FINED METAL	1/2" BLACK PAINTED FINED METAL
SA4	SA4	1	SA4	1/2" BLACK PAINTED FINED METAL	1/2" BLACK PAINTED FINED METAL	1/2" BLACK PAINTED FINED METAL
SA5	SA5	1	SA5	1/2" BLACK PAINTED FINED METAL	1/2" BLACK PAINTED FINED METAL	1/2" BLACK PAINTED FINED METAL
C	C	1	C	1/2" BLACK PAINTED FINED METAL	1/2" BLACK PAINTED FINED METAL	1/2" BLACK PAINTED FINED METAL



WALLS:

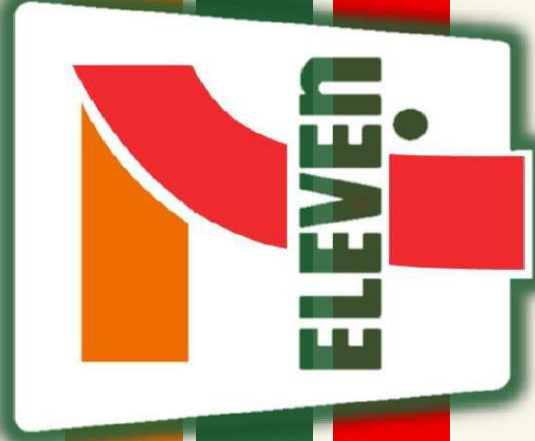
- 6" FULL SPLIT-FACE BLOCK PERIMETER WALL
- EXISTING WALL - PROJECT IN PLACE



CONCEPTUAL WALL PLAN
7-Eleven
ADKAN ENGINEERS



**7-ELEVEN
3596 VAN BUREN BLVD
SECURITY PLAN**



HEALTHY FOODS = HEALTHY LIVING