



# **WOMEN OF RIVERSIDE HISTORIC CONTEXT STATEMENT UPDATE**

---

**Community & Economic Development Department**

**Cultural Heritage Board**

Agenda Item: 7

January 21, 2026

# BACKGROUND

- June 7, 2024 – Grant Application
- Sept 30, 2024 - Awarded
- HRG Selected
- Sept 9, 2025 – 1<sup>st</sup> Community Meeting
- Dec 16, 2025 – 1<sup>st</sup> Draft
- Jan/Feb 2026 – 2<sup>nd</sup> Community Meeting
- April 2026 - Completion

# WHAT IS A HISTORIC CONTEXT?

“An organizing structure for grouping information about historic properties that share a common theme, place, and time.”

- Framework for identifying and evaluating
- Organized by themes
- Not necessarily chronological
- Connected to built environment

# WOMEN OF RIVERSIDE THEMES

## Early History

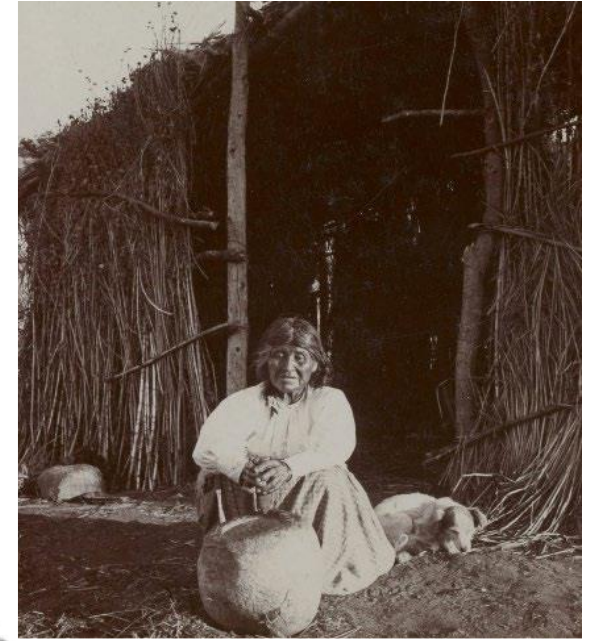
- Indigenous Riverside
- Spanish Era
- Mexican Era
- Early American Period

## • Women In Riverside, 1870-1889

- Agriculture And Labor
- Church Societies and Spiritualism
- Early Professionals



Universalist Ladies of Riverside, 1898



Cahuilla woman using a stone mortar and pestle, c. 1900.

# WOMEN OF RIVERSIDE THEMES



Riverside Japanese Women's Club, 1908..



Native American girls of Sherman Institute holding YWCA signs, 1925.

## • Progressive Era and Growing Rights, 1890-1919

- Women's Social Clubs
- Women's Auxiliaries & Sororal Orders
- The Suffrage and Temperance Movements
- Charity, Health, and Sanitary Works
- Education
- Business & Professional Women
- Arts & Culture
- Women In Riverside During World War I, 1917-1918

## • Civic And Government Involvement, 1920-1941

- Post-Suffrage Women's Organizations
- Women in the Workforce
- Professional Women's Organizations
- Charitable Organizations and the Community Chest
- Arts And Culture 1920 – 1940
- Women During the Great Depression and the New Deal





# WOMEN OF RIVERSIDE THEMES

## • Women During World War II, 1942-1944

- Volunteerism at Home
- “Women’s Work” in Wartime Riverside
- WACS and WASPS: Women at March Field, Camp Anza, And Camp Haan
- Japanese Women in Riverside

## • Women in the Postwar Era, 1945-1959

- Postwar Readjustment and the Nuclear Family
- Women in the Labor Force
- Postwar Women’s Organizations
- Education
- Politics and Civic Representation

## • Second Wave Feminism and Women in the Workplace, 1960-1990

- TBD



Military Women at the Mission Inn, 1940s.  
*University of California, Riverside.*

# RECOMMENDATION

Staff recommends that the Cultural Heritage Board receive and file this update on the Women of Riverside Historic Context Statement.