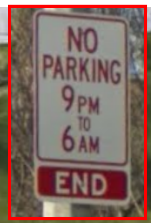


Relocate existing sign



Sidewalk to remain open

Sycamore Canyon Park Street parking

Add 20' painted red curb

Install Type III barricades with R11-2 "Road Closed" signs and flashing warning lights

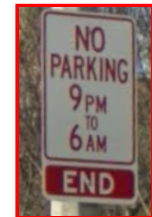
Sidewalk to remain open

Existing Preferential Parking Zone (PPZ)

Install W20-3 (mod) "Road Closed Ahead" sign

Install W20-3 (mod) "Road Closed Ahead" sign

Install Water filled barricade across street



R11-2



W20-3\*\*

