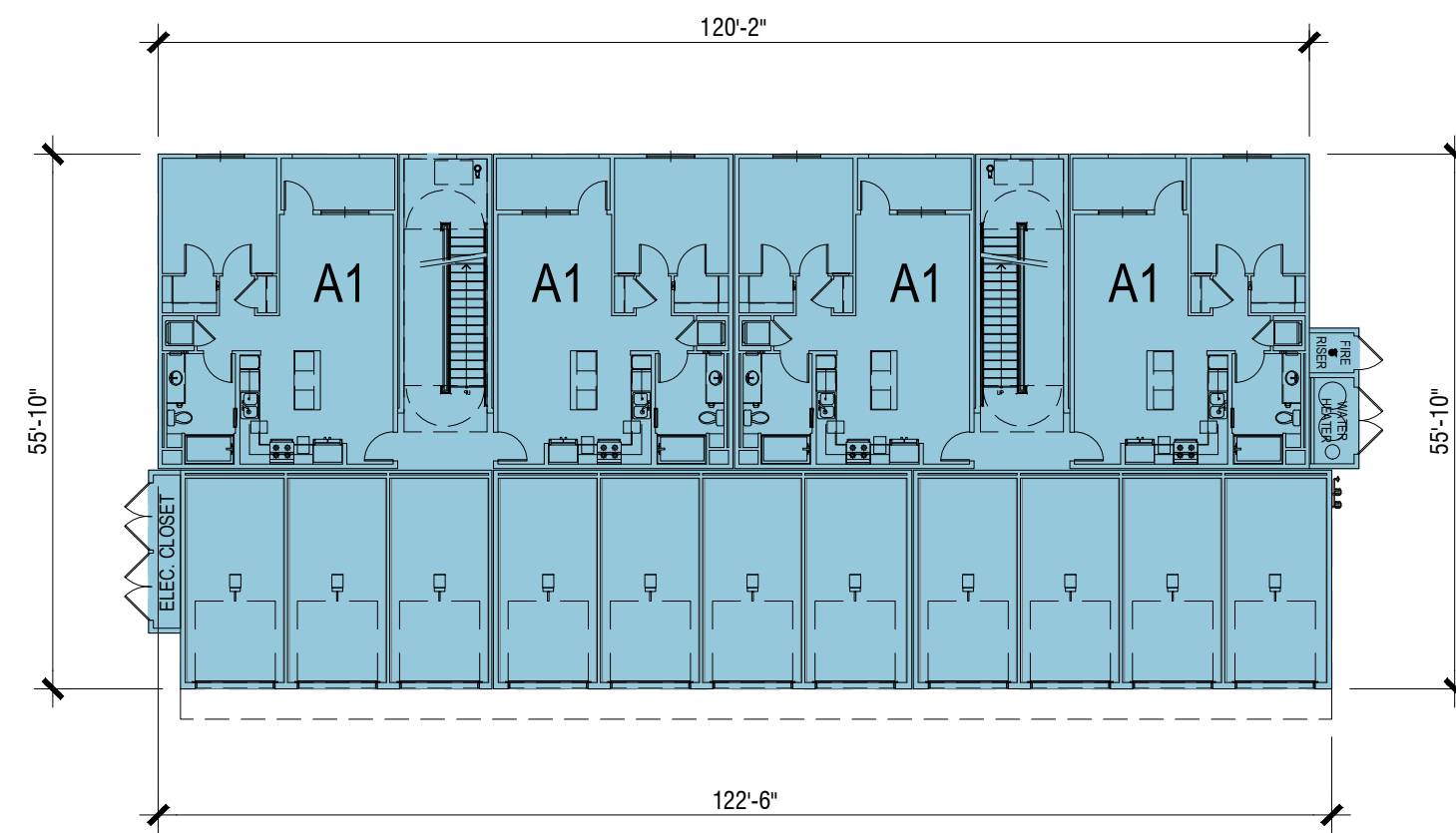
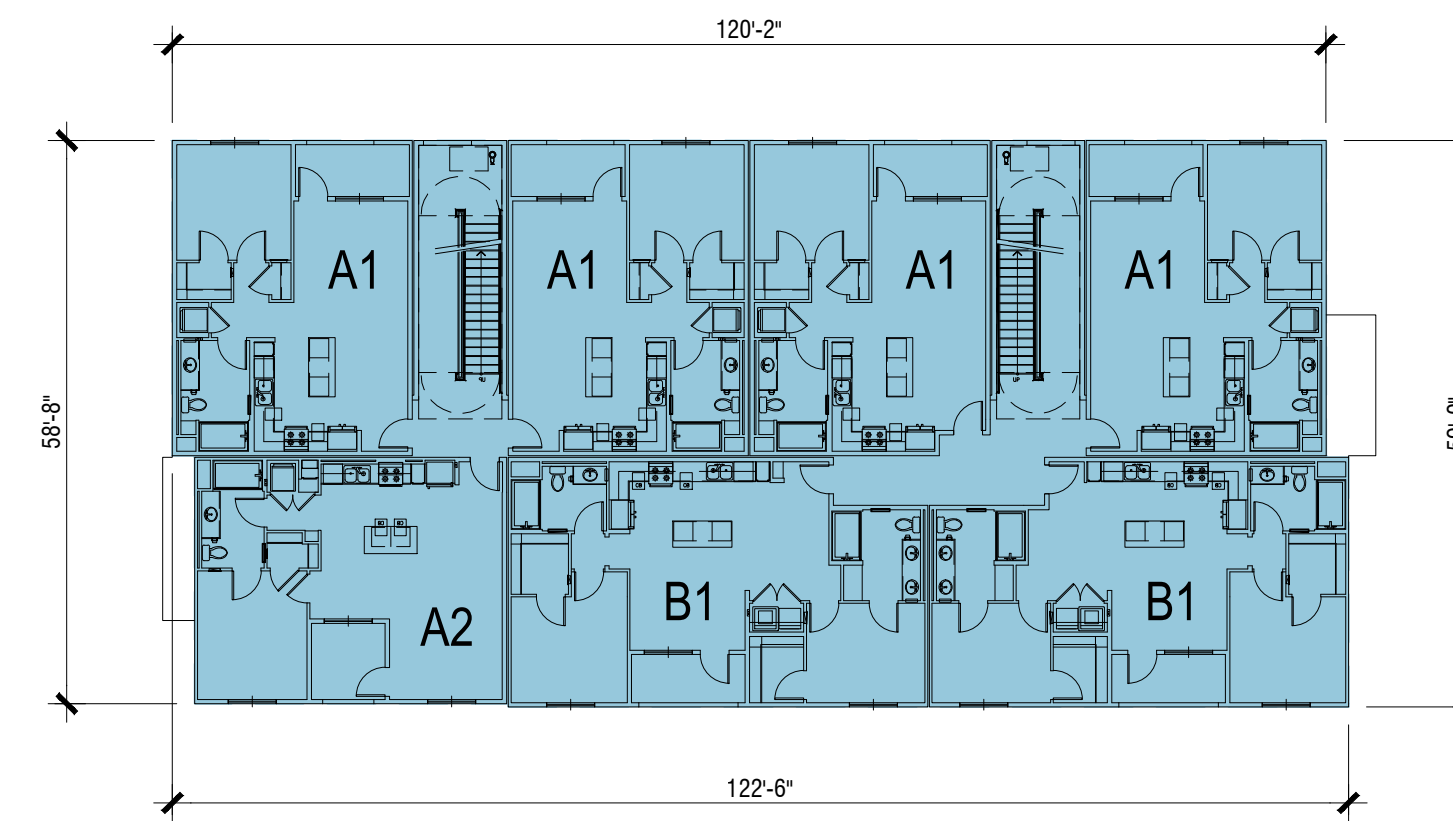


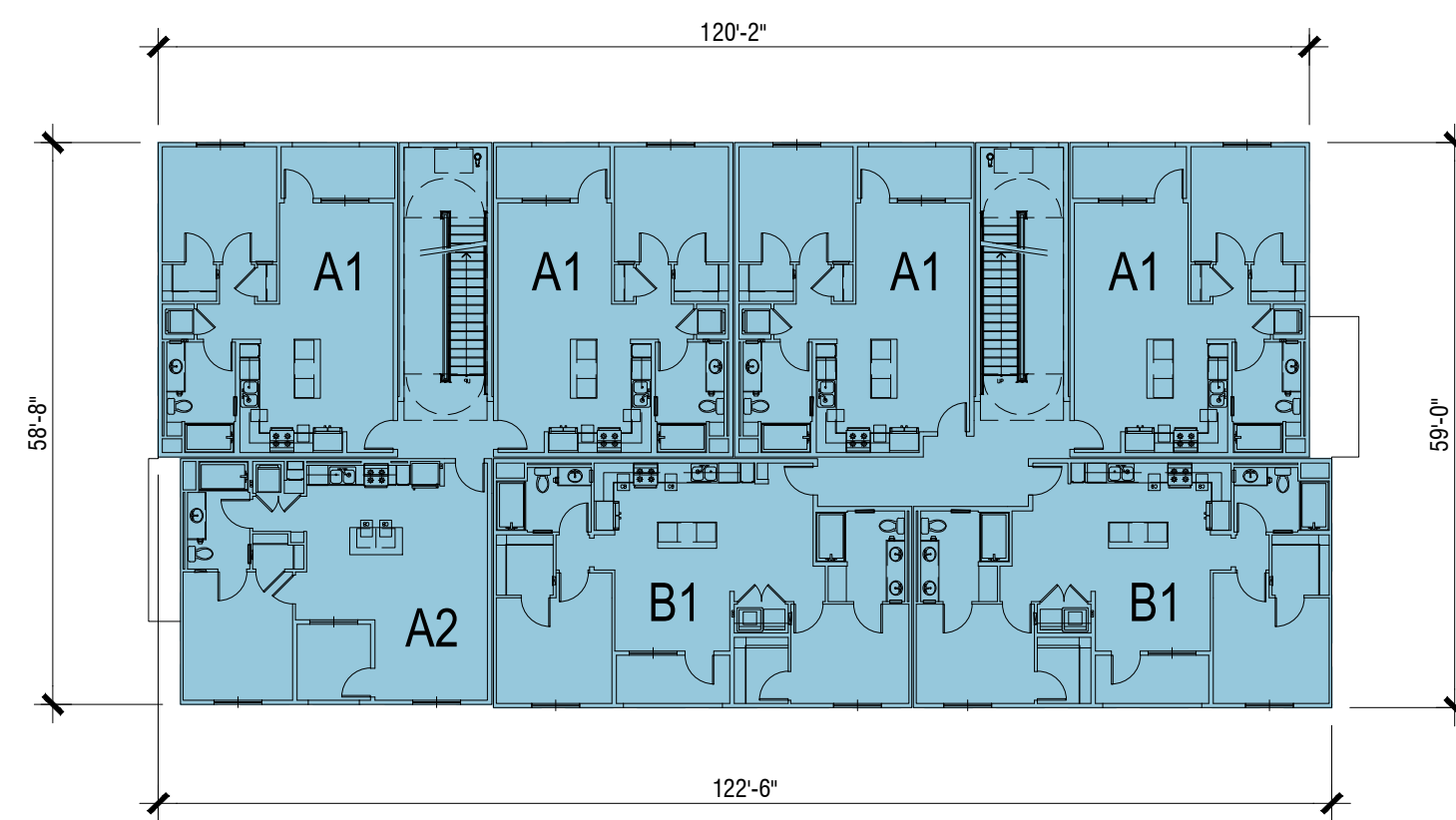
ROOF EQUIPMENT SCREENING SECTION (TYP.)



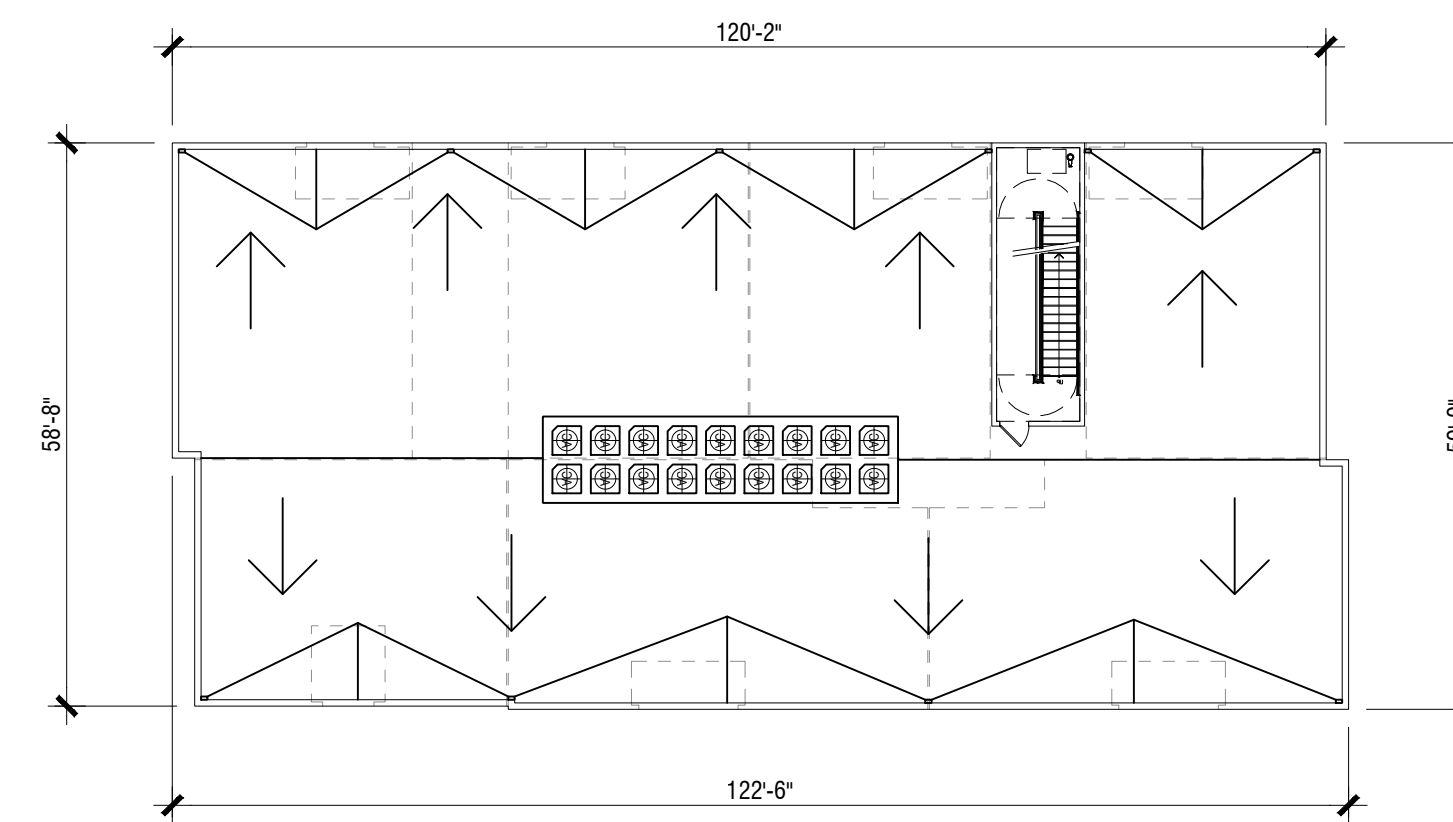
GROUND LEVEL 1



SECOND LEVEL 2

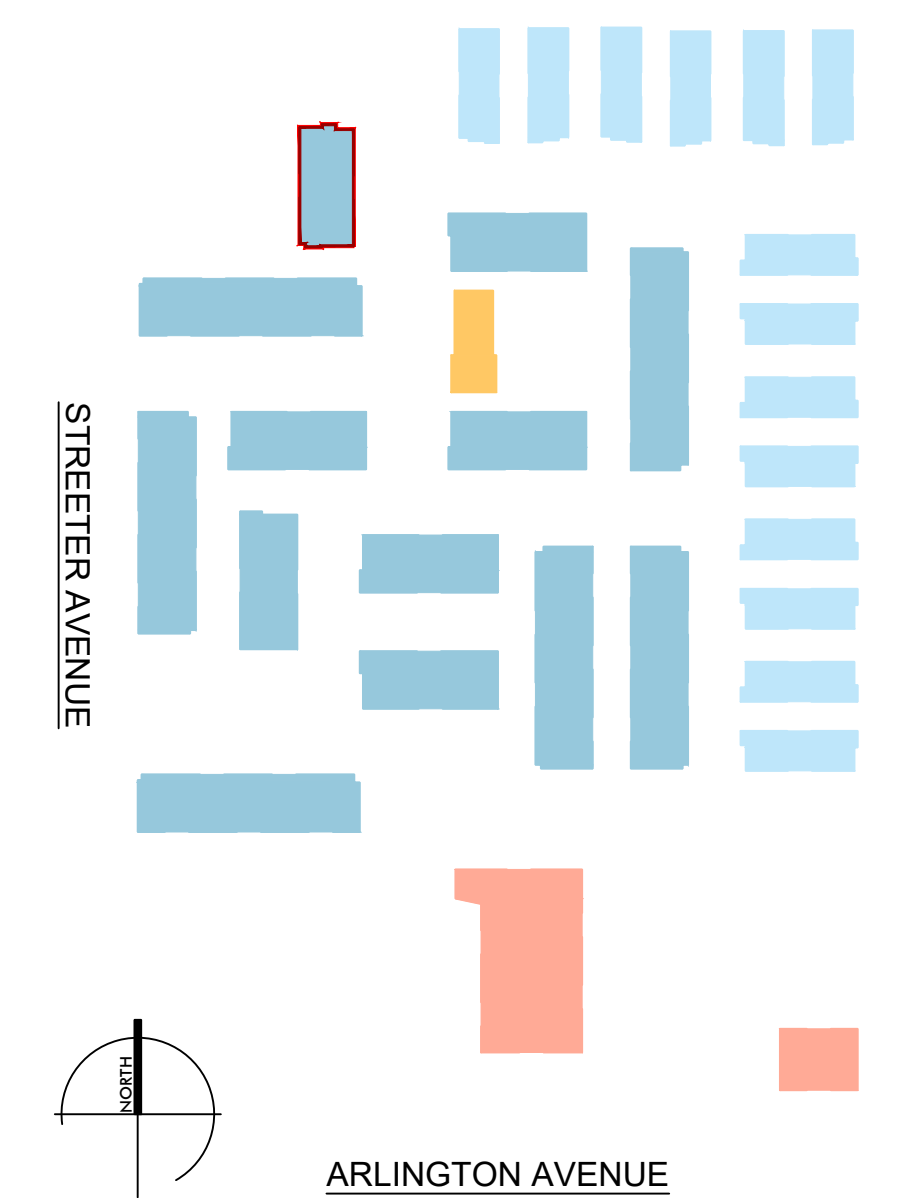


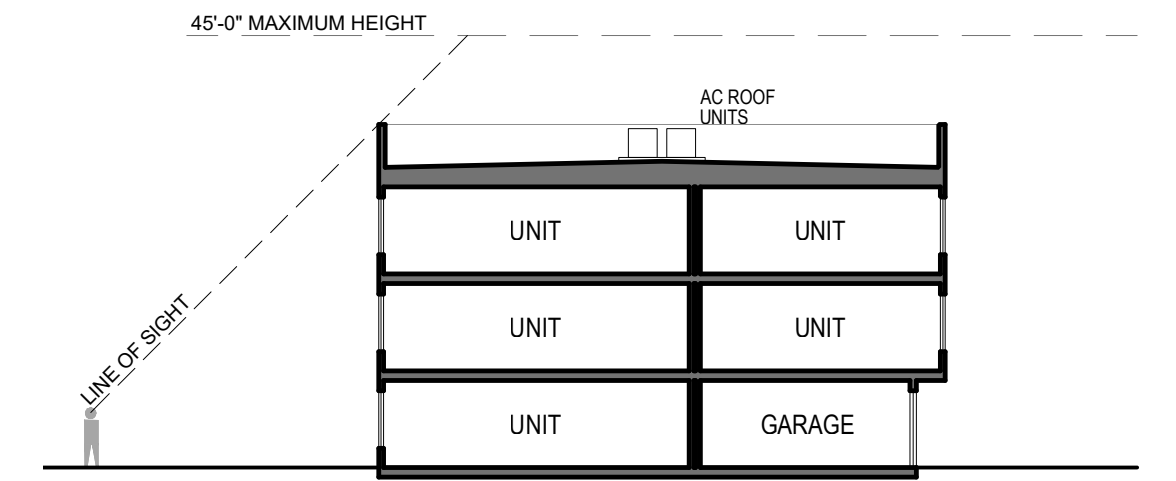
THIRD LEVEL 3



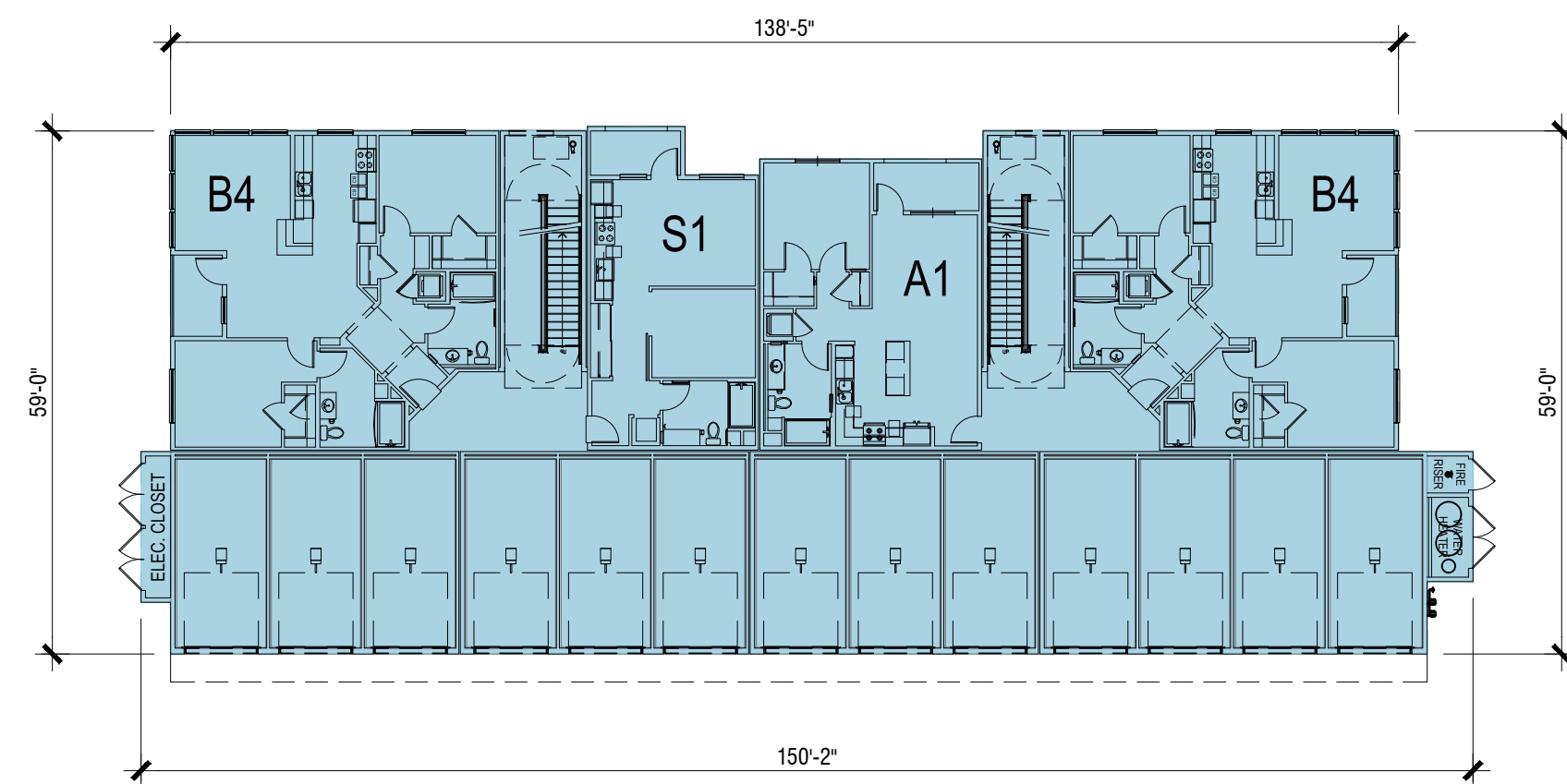
ROOF PLAN 4

KEY MAP

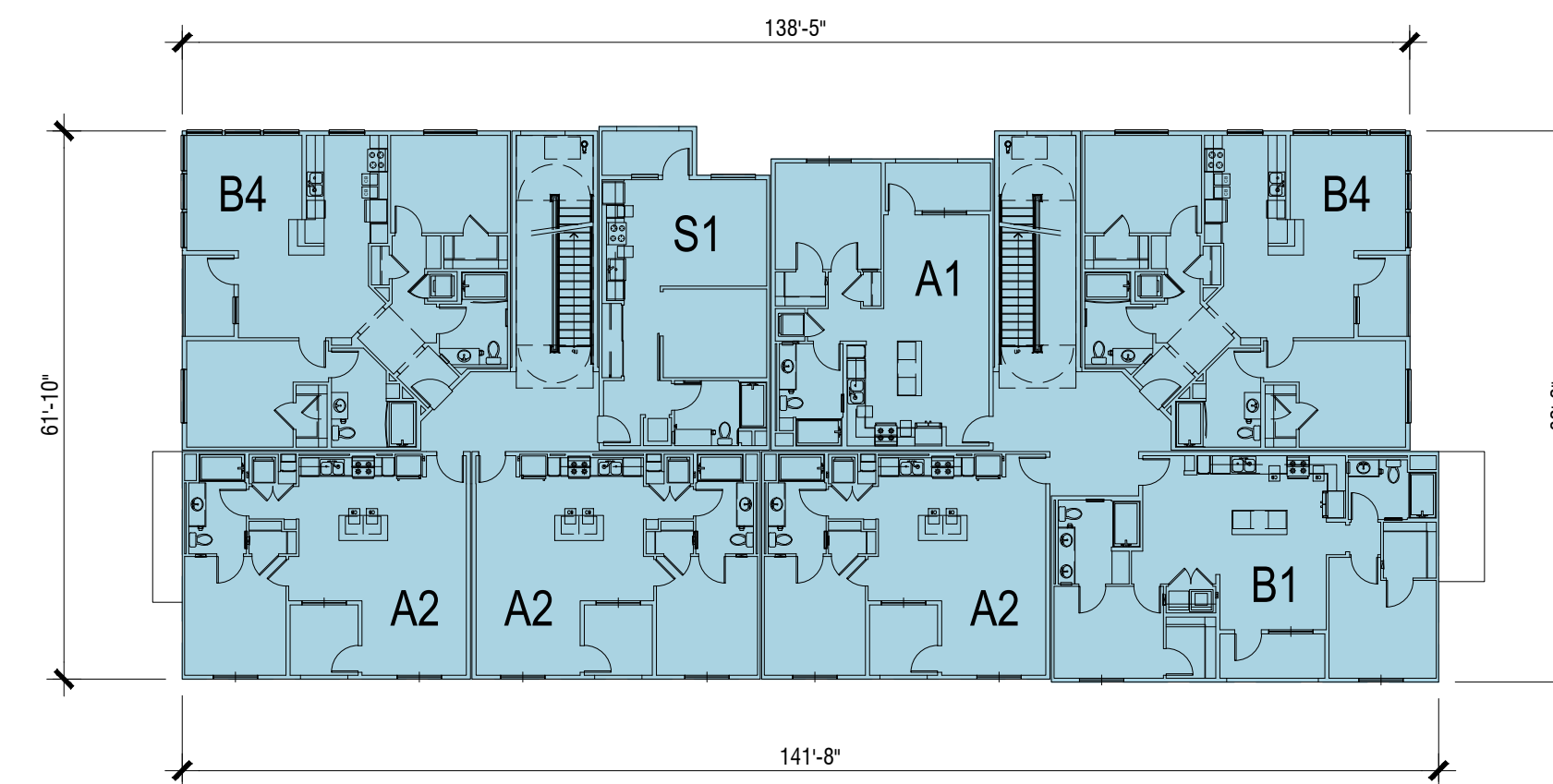




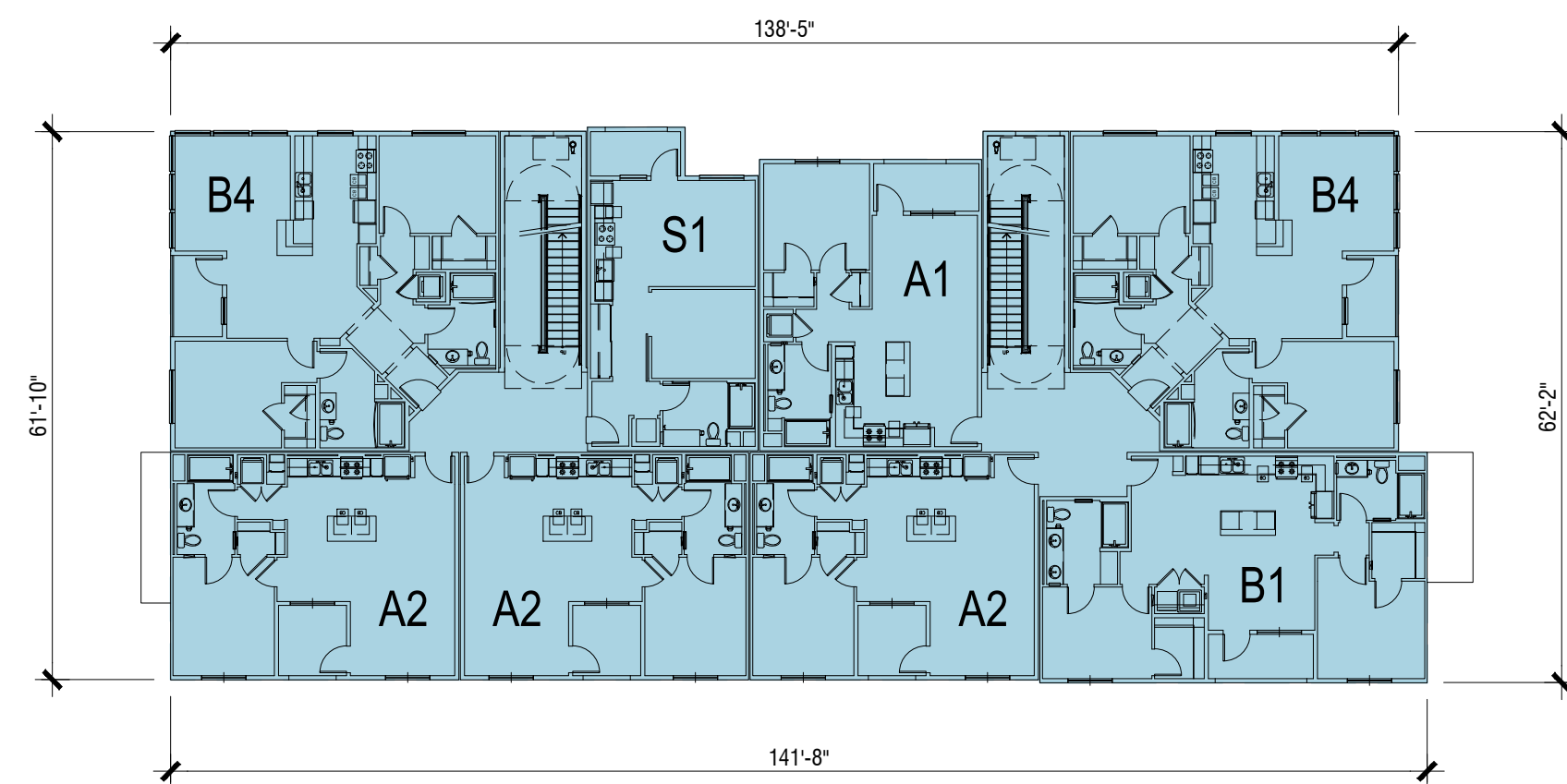
ROOF EQUIPMENT SCREENING SECTION (TYP.)



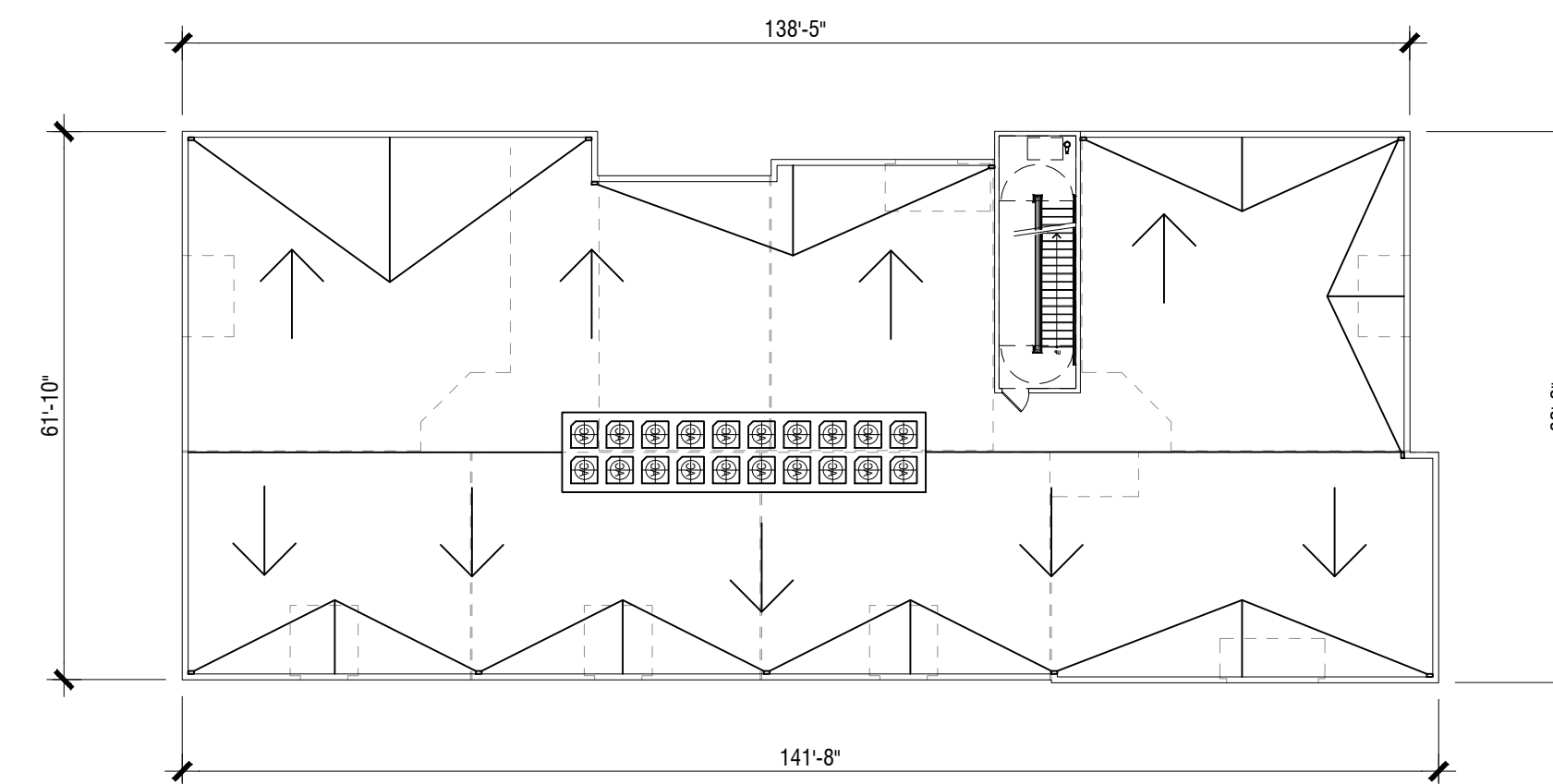
GROUND LEVEL 1



SECOND LEVEL 2

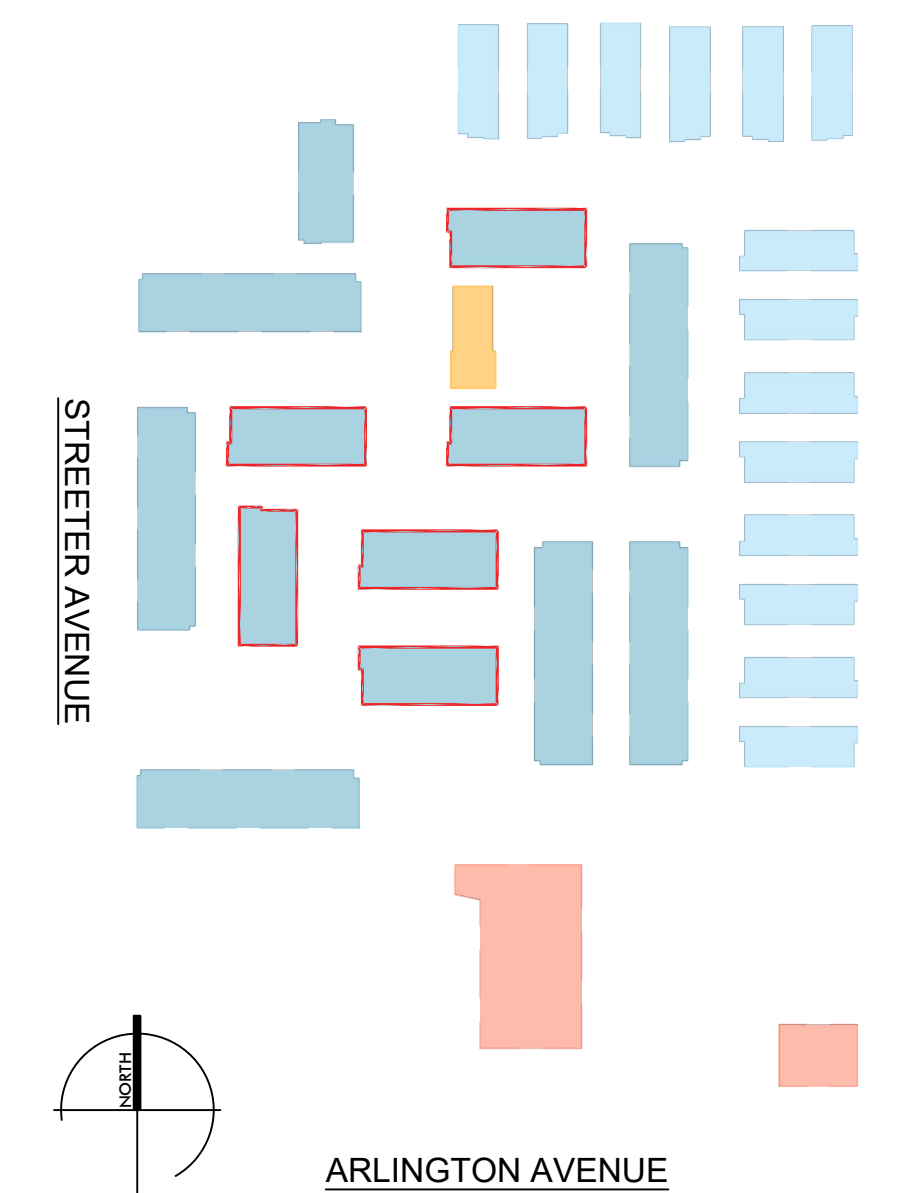


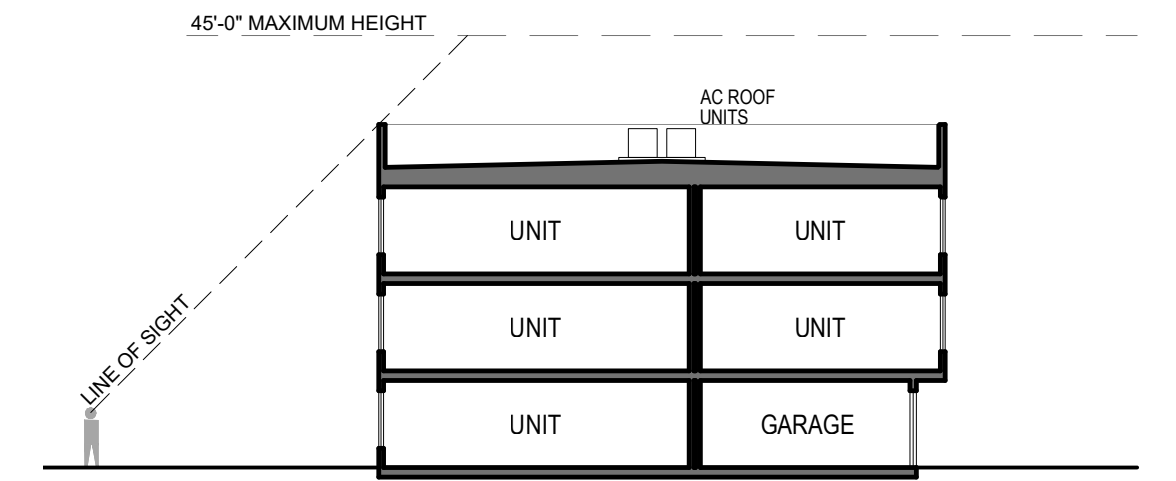
THIRD LEVEL 3



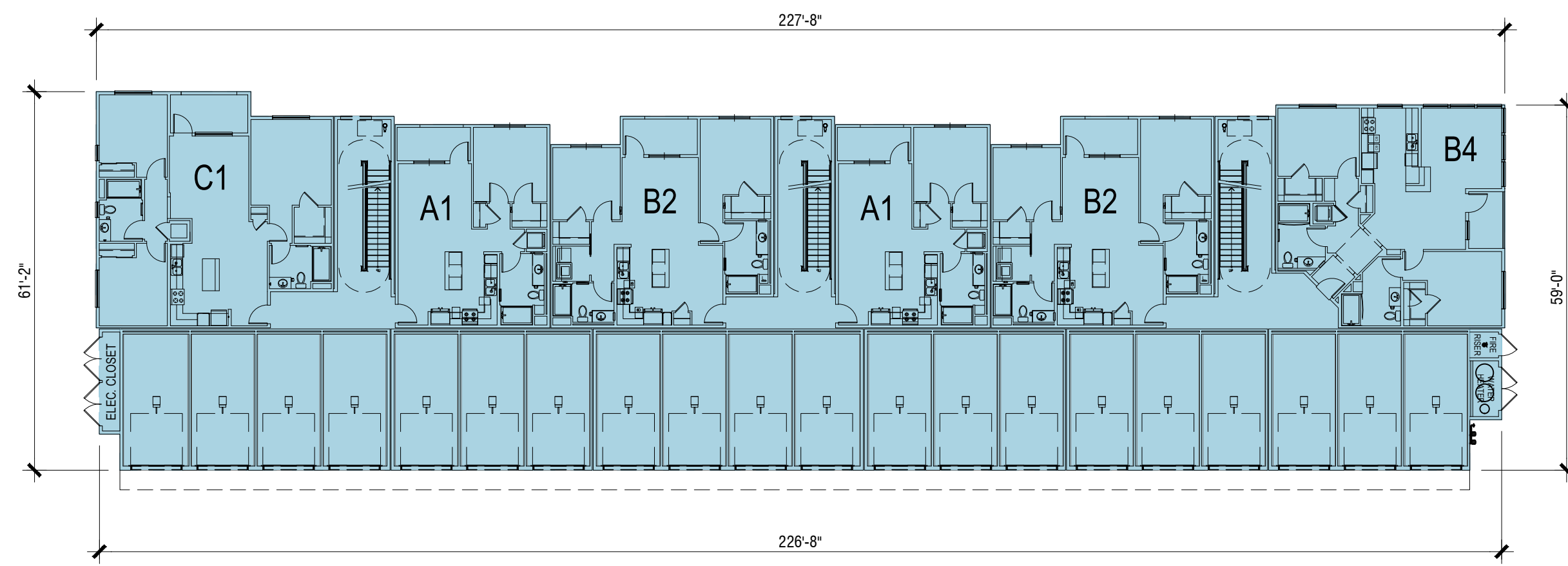
ROOF PLAN 4

KEY MAP

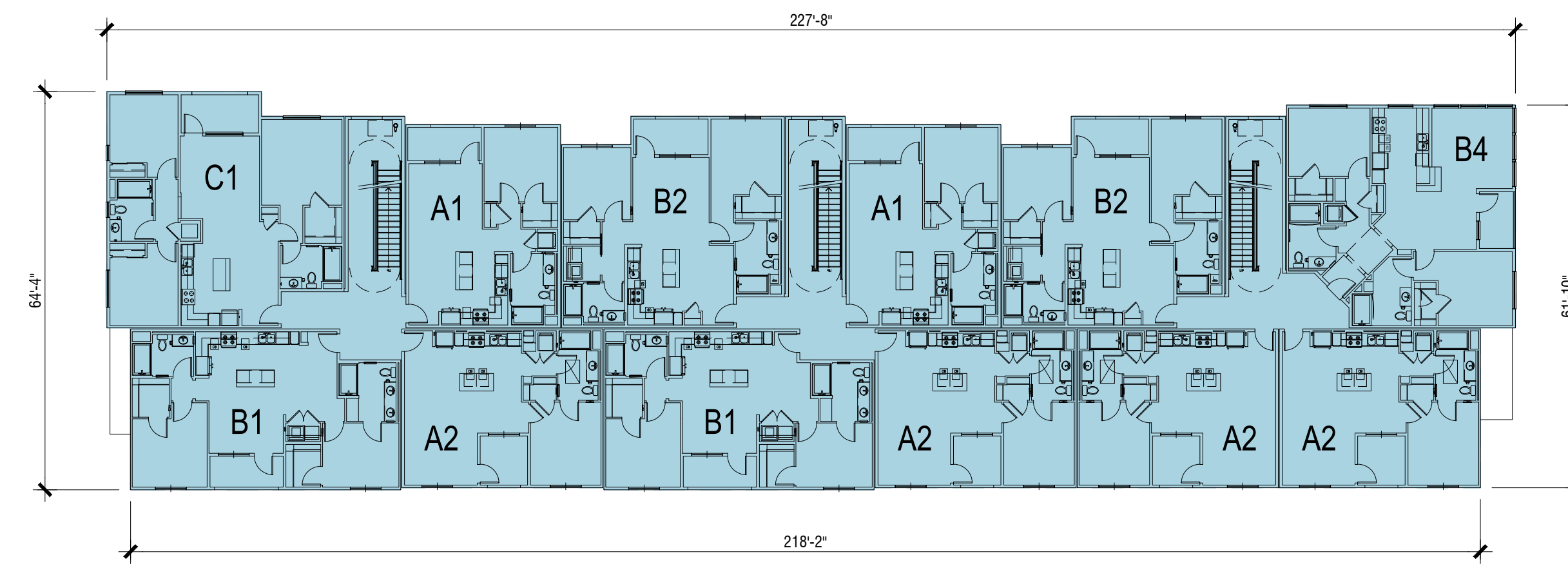




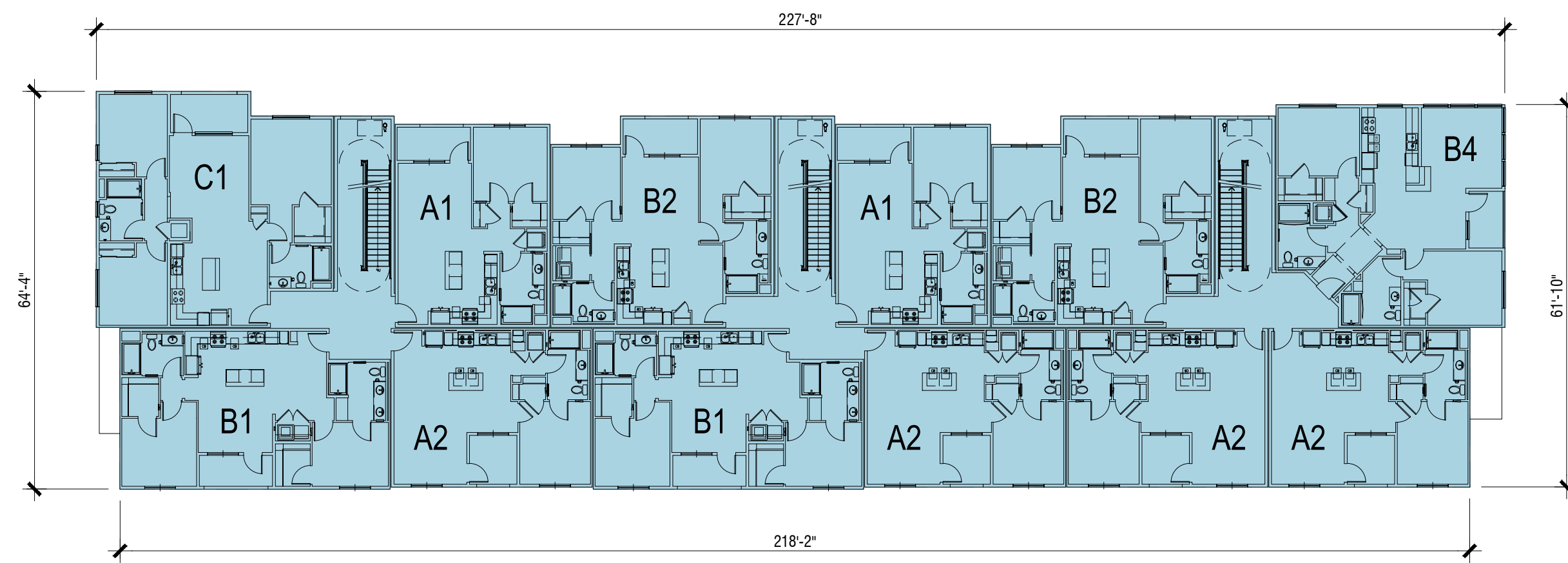
ROOF EQUIPMENT SCREENING SECTION (TYP.)



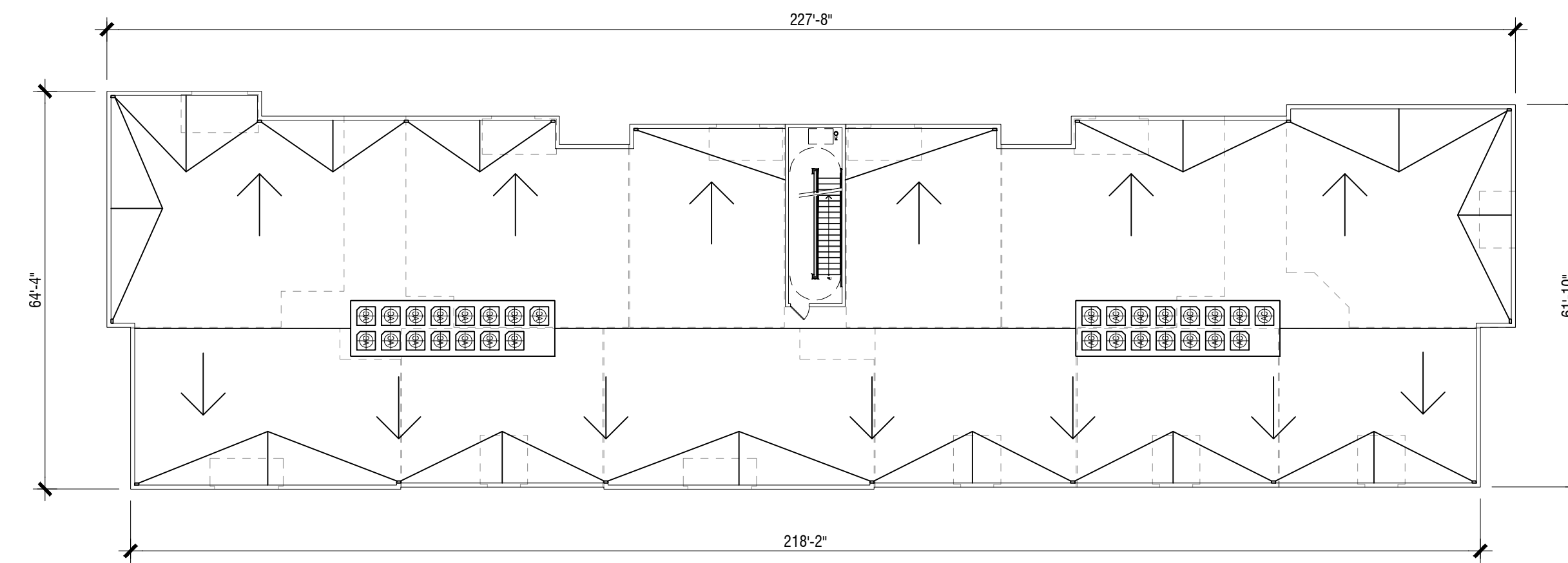
GROUND LEVEL 1



SECOND LEVEL 2

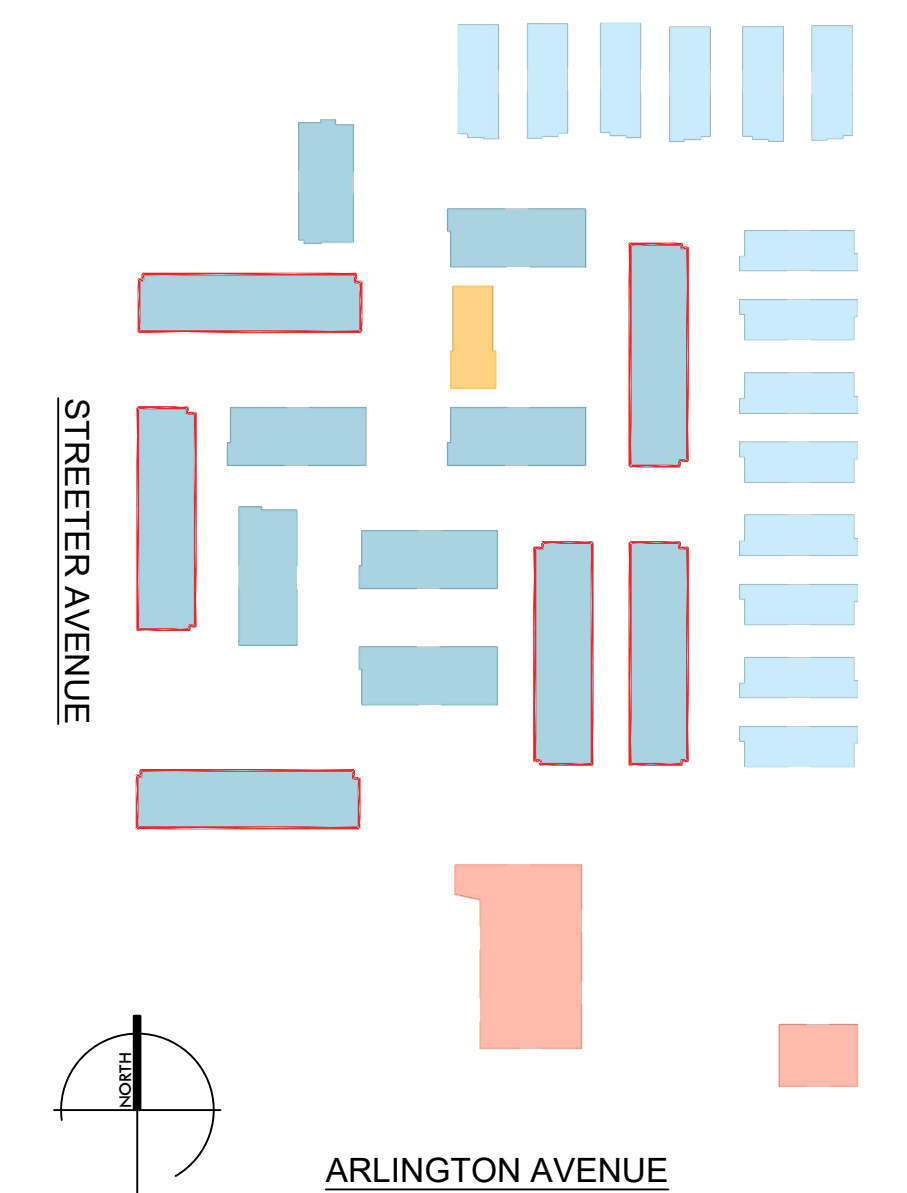


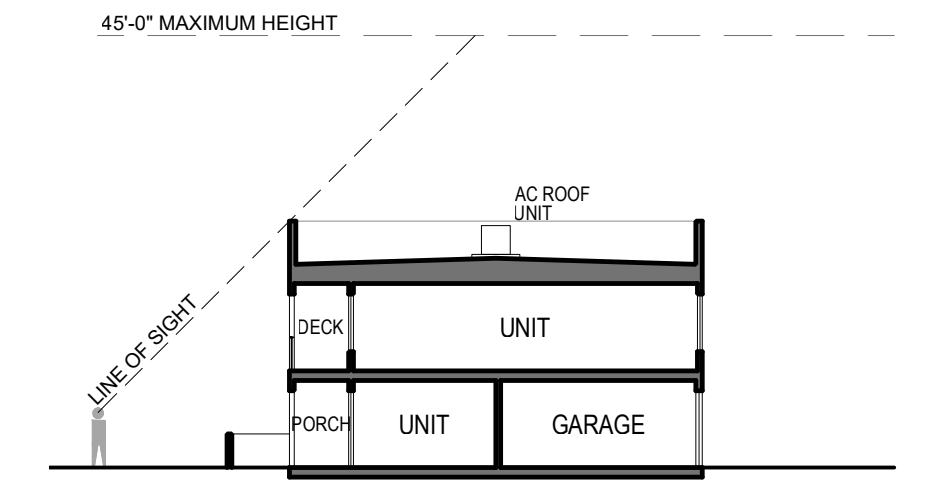
THIRD LEVEL 3



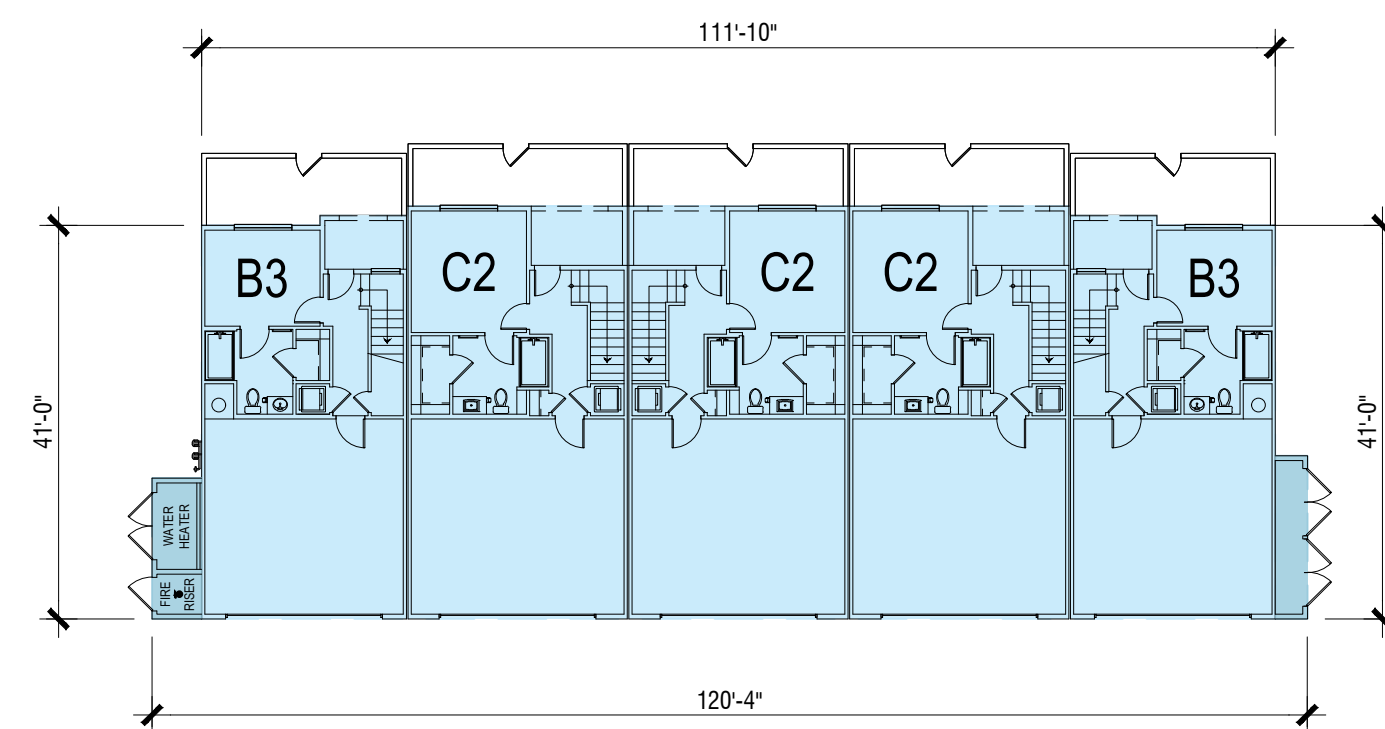
ROOF PLAN 4

KEY MAP

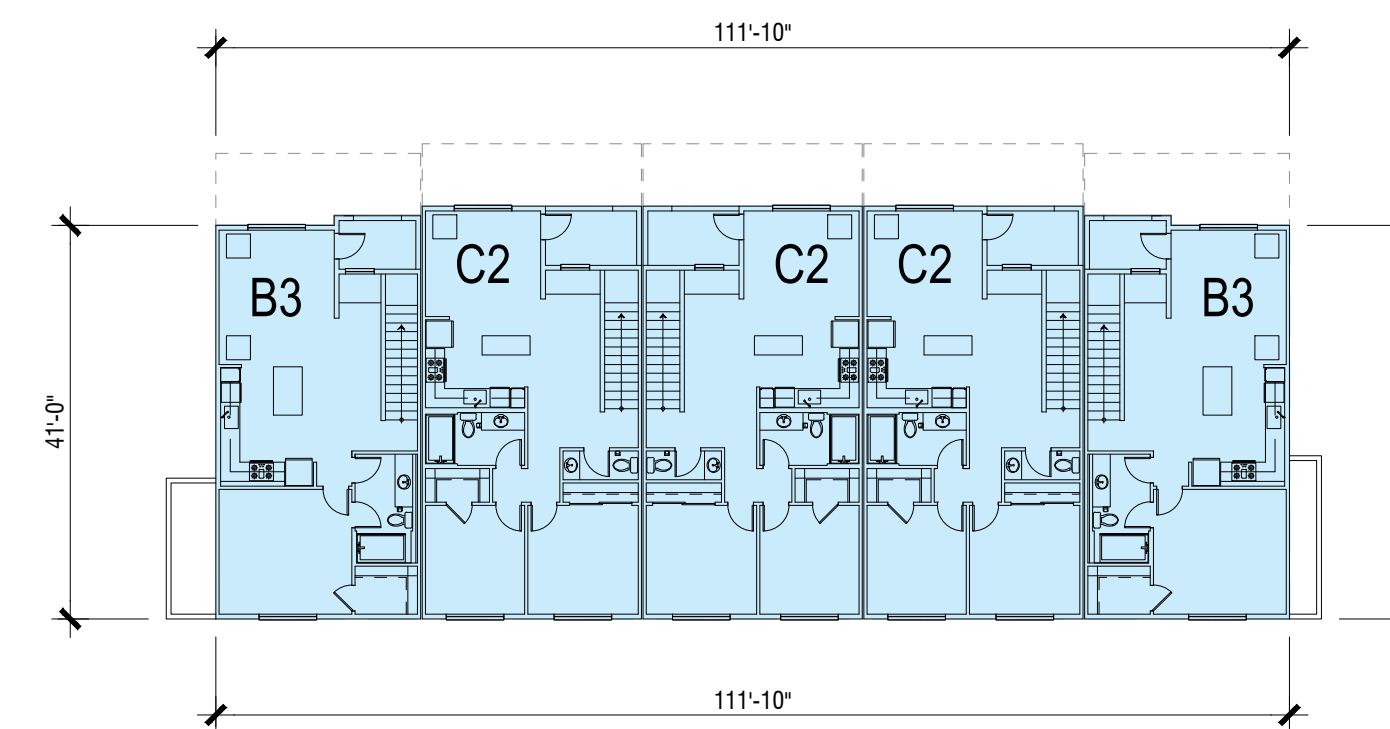




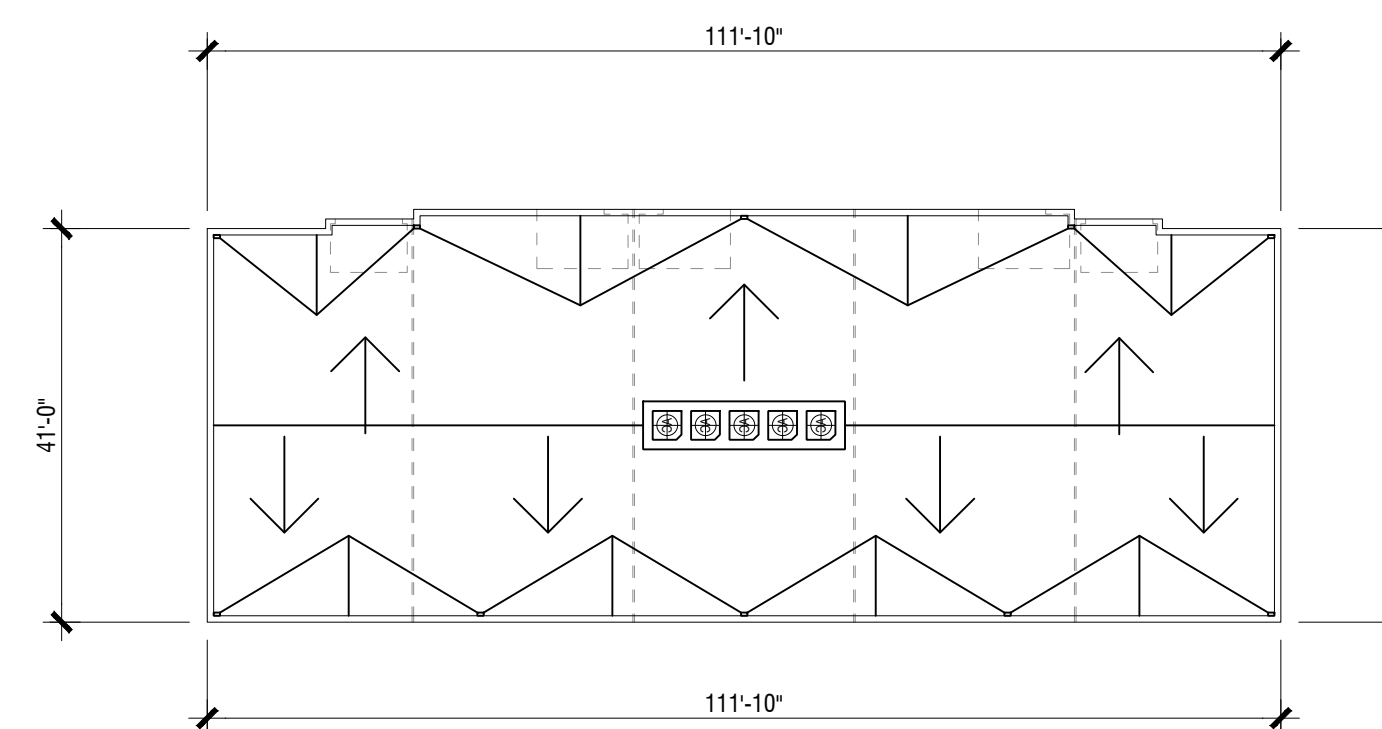
ROOF EQUIPMENT SCREENING SECTION (TYP.)



GROUND LEVEL 1

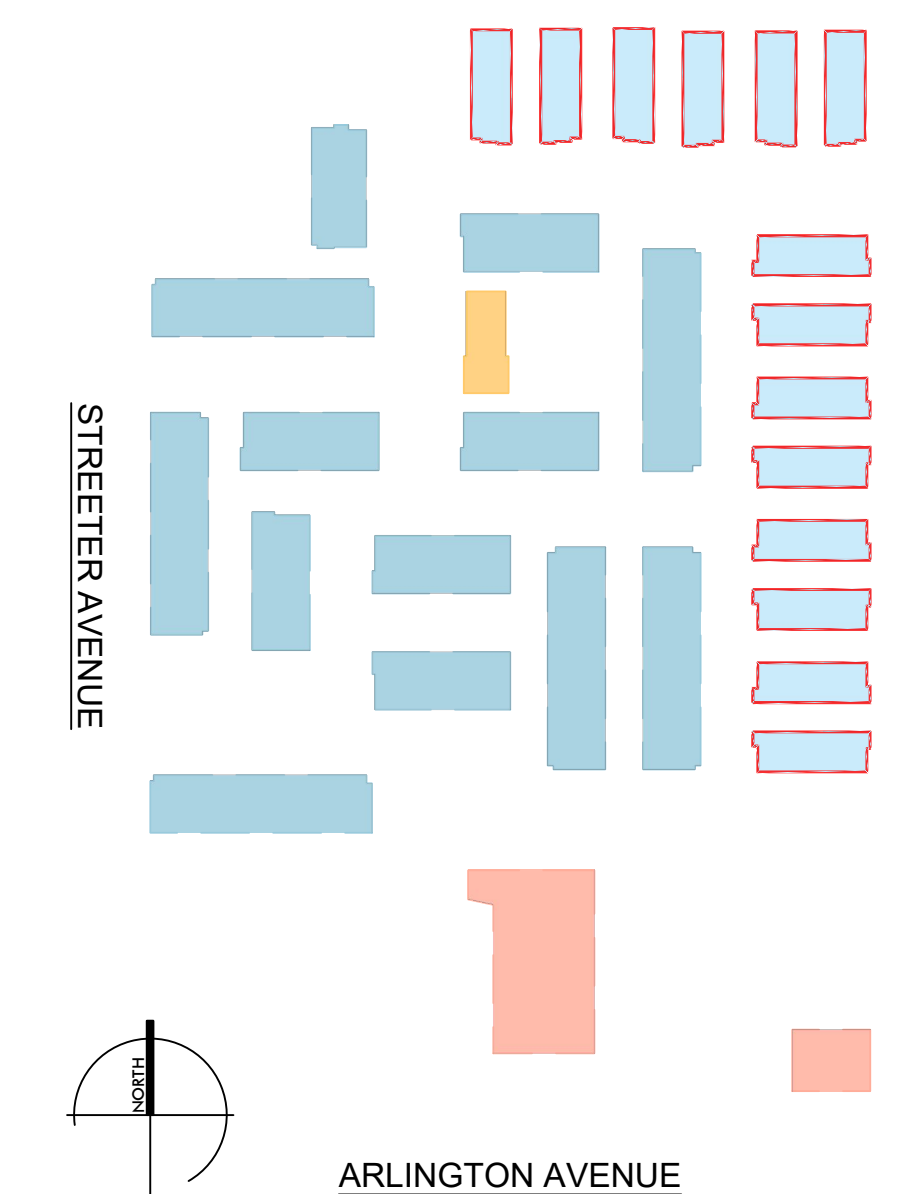


SECOND LEVEL 2

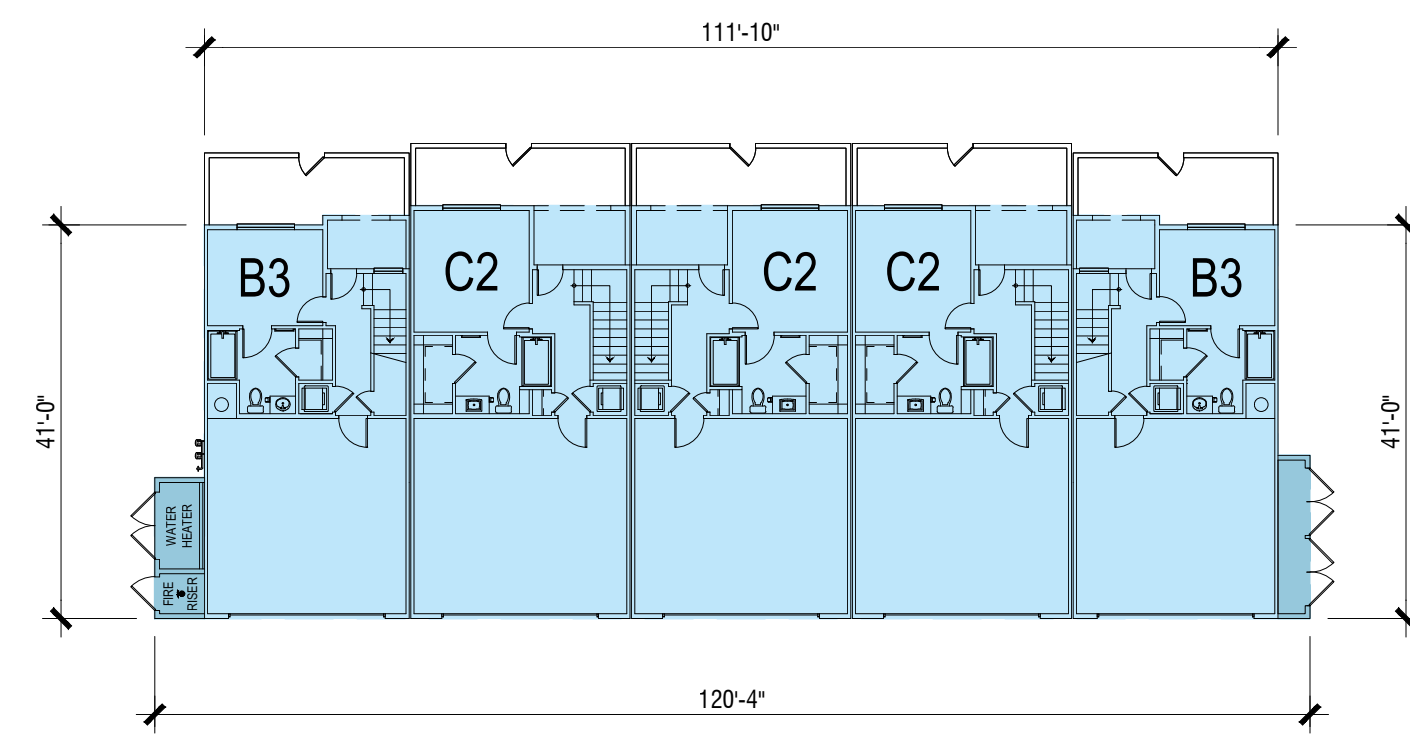


ROOF PLAN 3

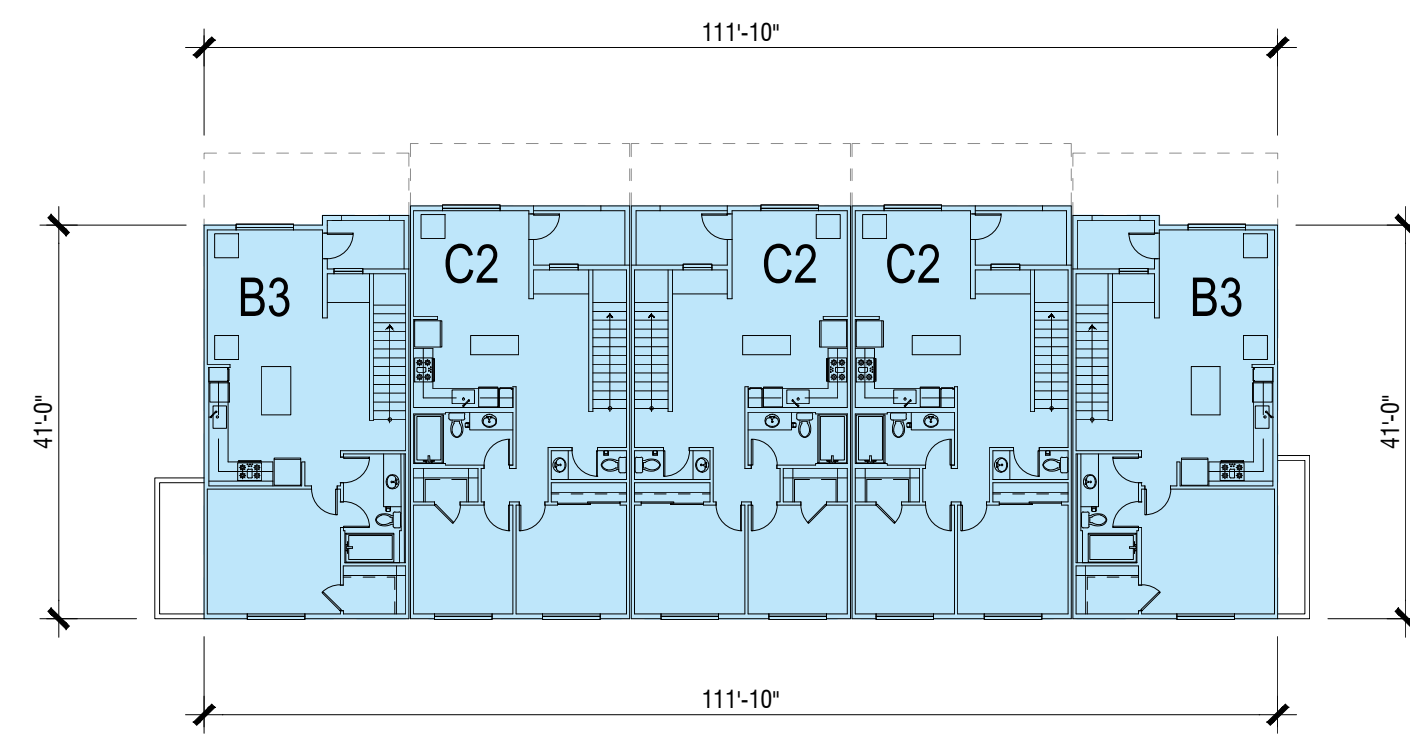
KEY MAP



TYPE A - TYPICAL CONDITION



GROUND LEVEL 1

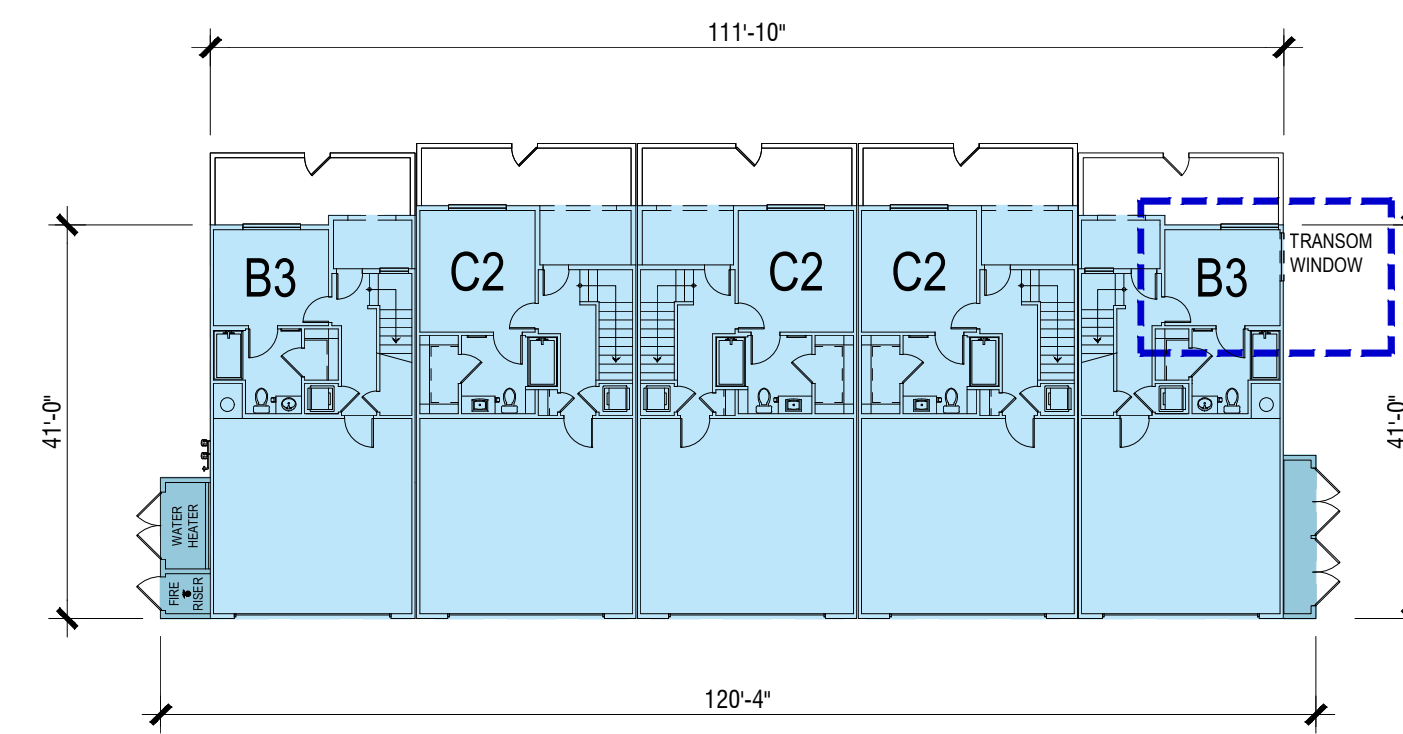


SECOND LEVEL 2

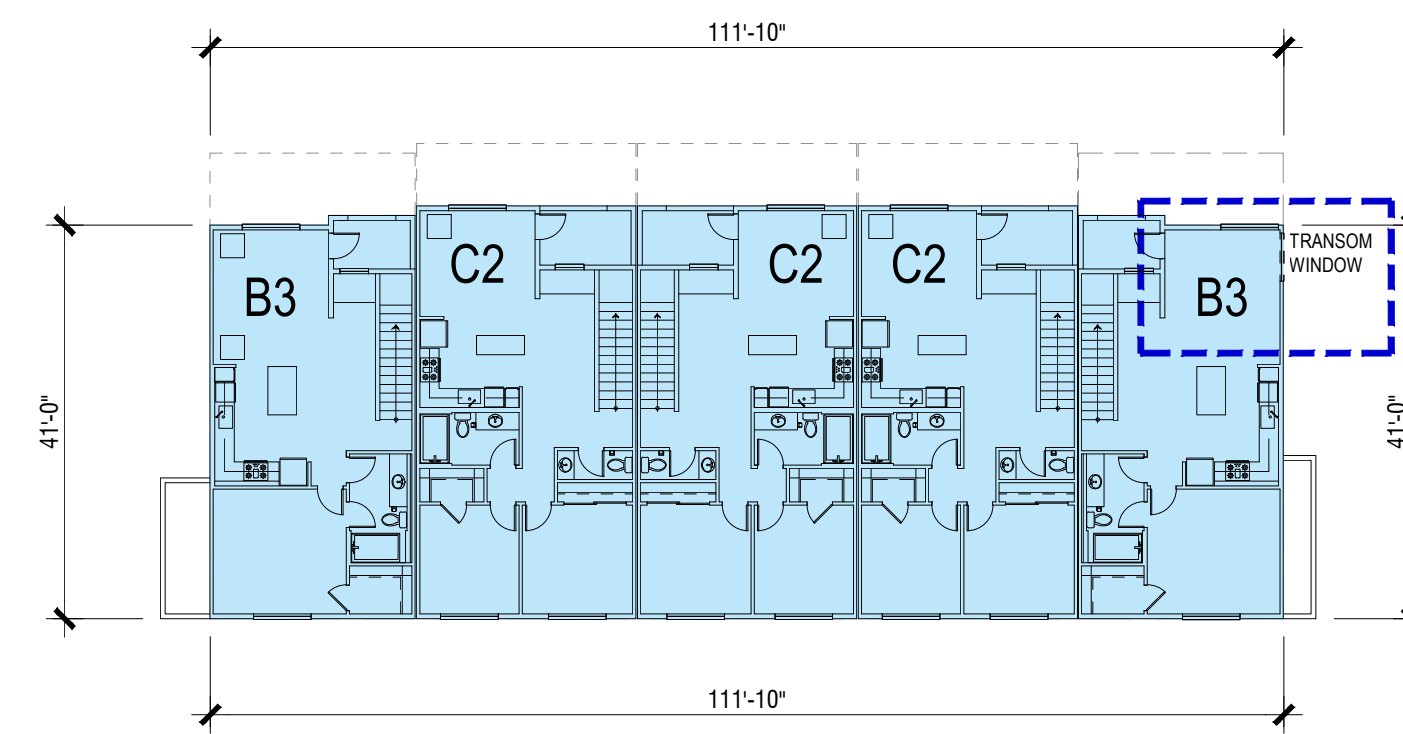


VIEW OF TYPE A TYPICAL SIDE ELEVATION

TYPE A - SPECIAL WINDOW CONDITION*



GROUND LEVEL 1



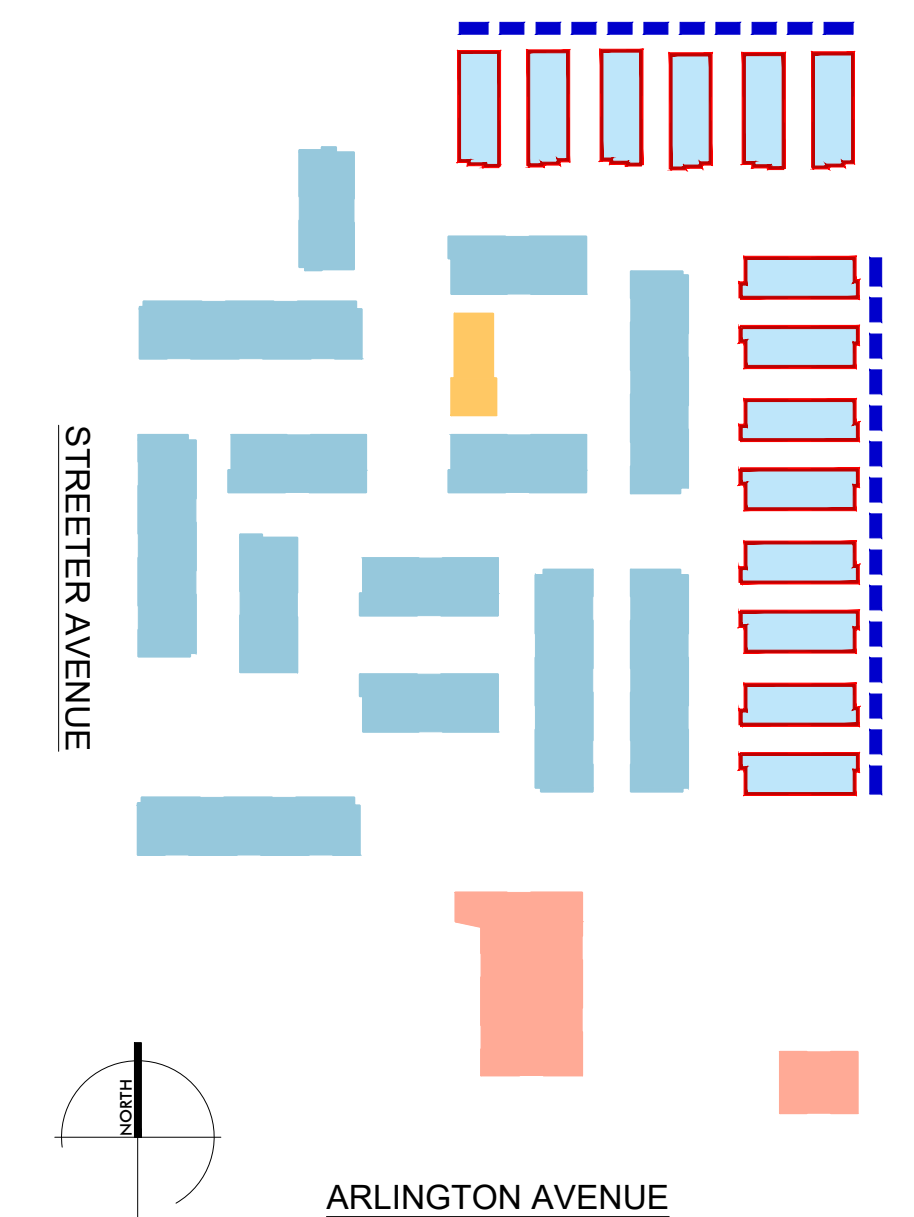
SECOND LEVEL 2

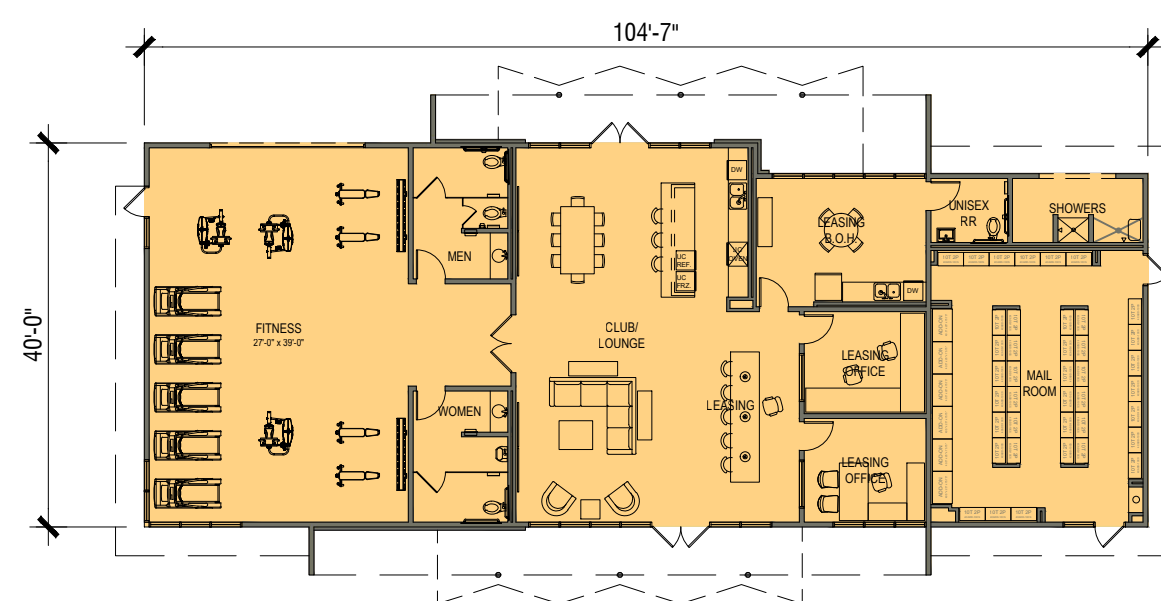


VIEW OF TYPE A SIDE ELEVATION W/ TRANSOM WINDOW SPECIAL CONDITION WHEN FACING SINGLE FAMILY RESIDENTIAL HOMES

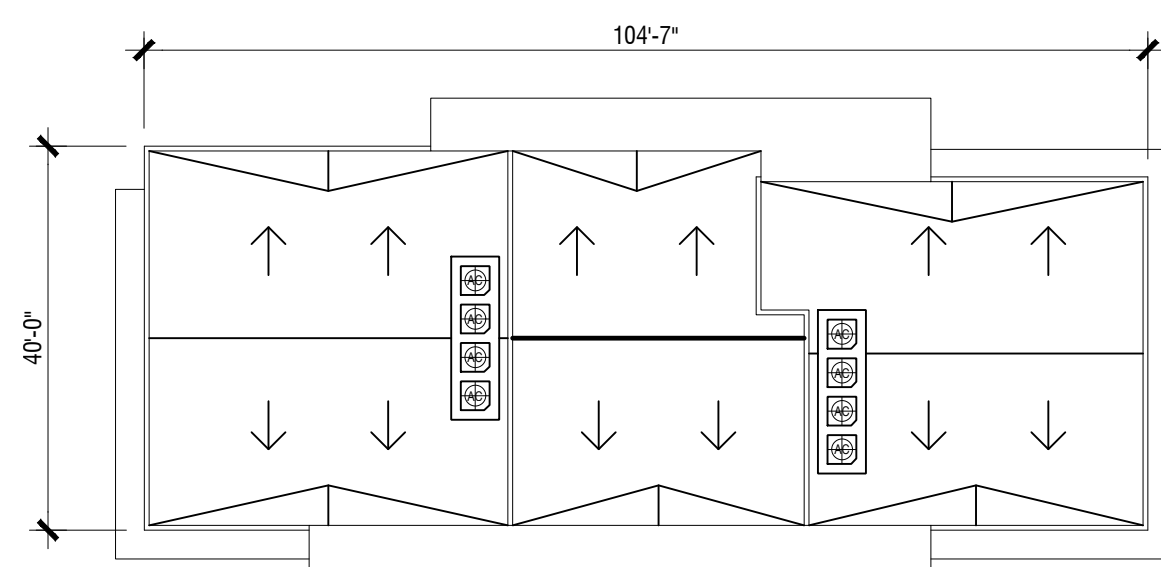
***SPECIAL WINDOW CONDITION**
 TRANSOM WINDOWS WILL BE USED IN PLACE OF FULL GLAZING ON THE SIDE ELEVATIONS OF BUILDING TYPE A WHEN THEY ARE FACING ONTO SINGLE FAMILY RESIDENTIAL HOMES. THE KEY MAP BELOW HIGHLIGHTS (BLUE DASH) WHICH ELEVATIONS ARE CURRENTLY FACING ONTO SINGLE FAMILY RESIDENTIAL.

KEY MAP



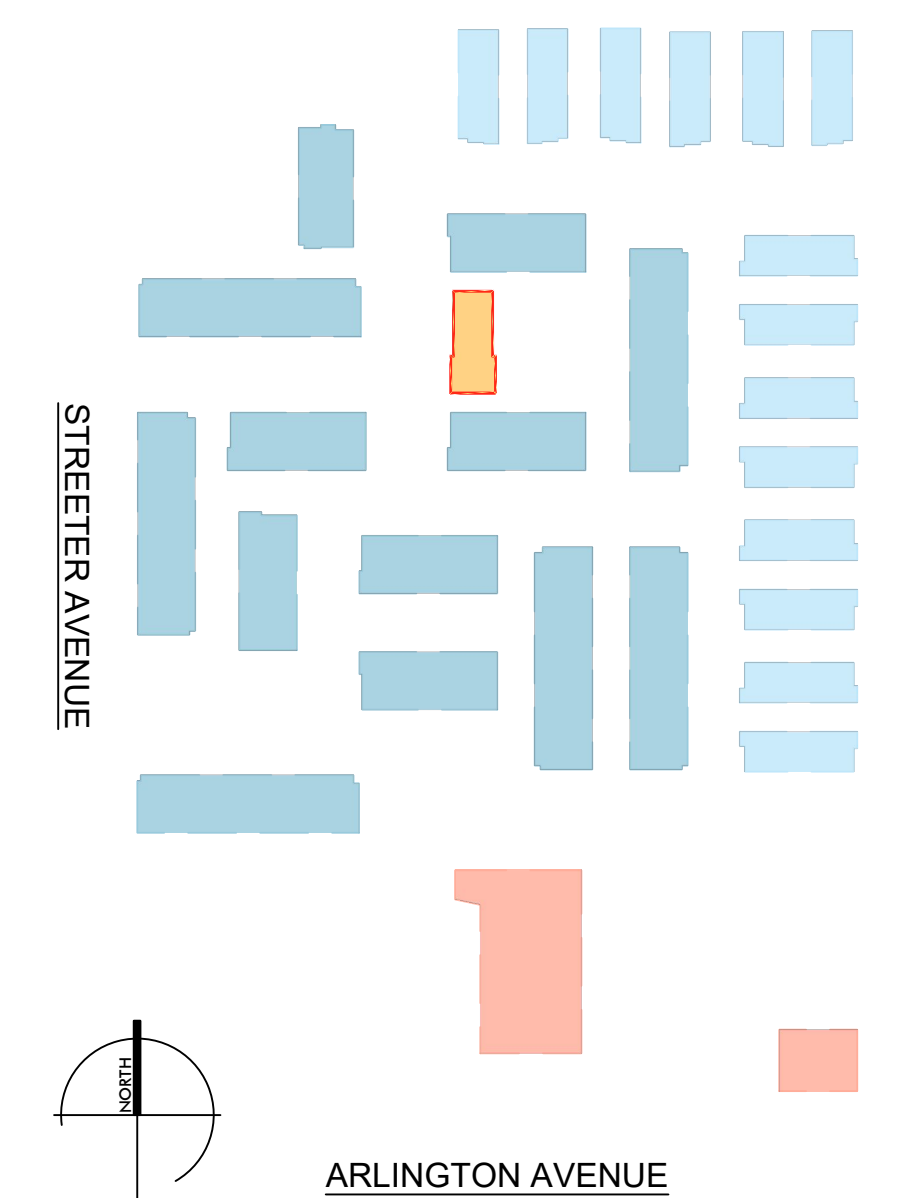


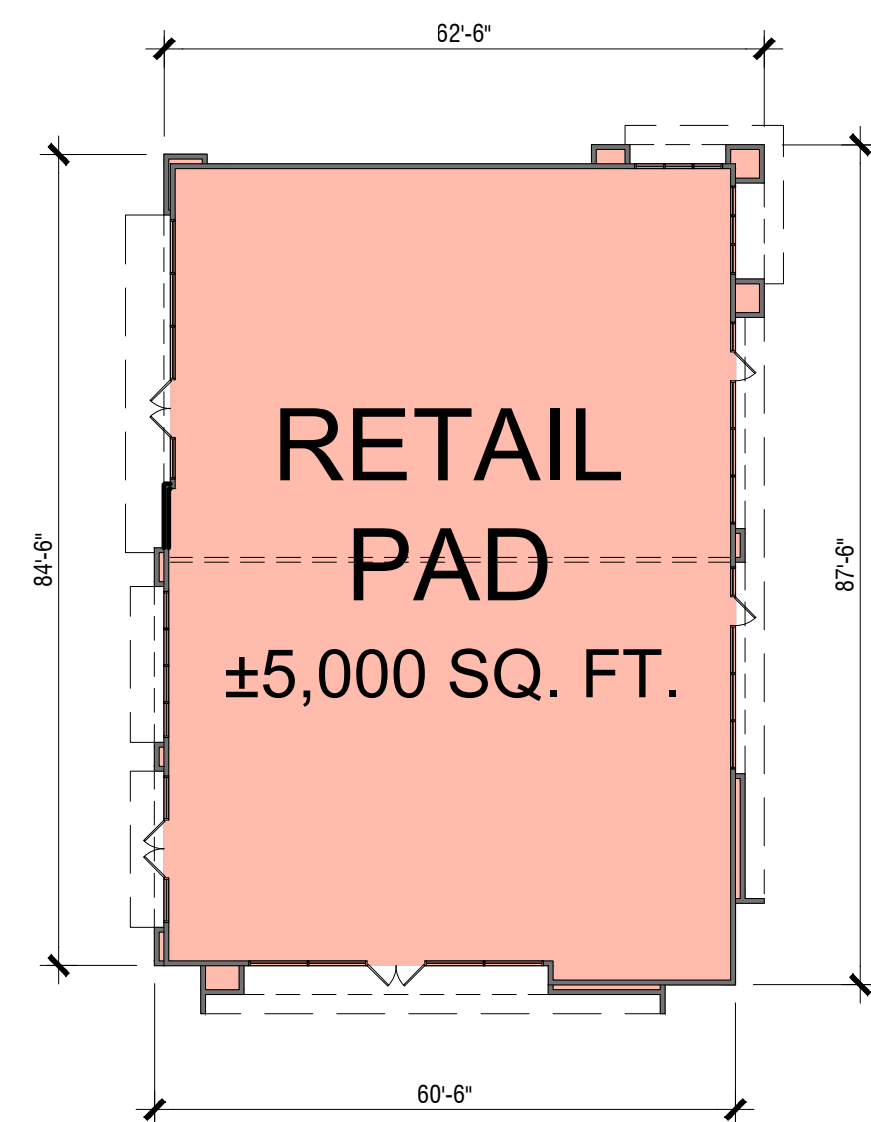
GROUND LEVEL 1



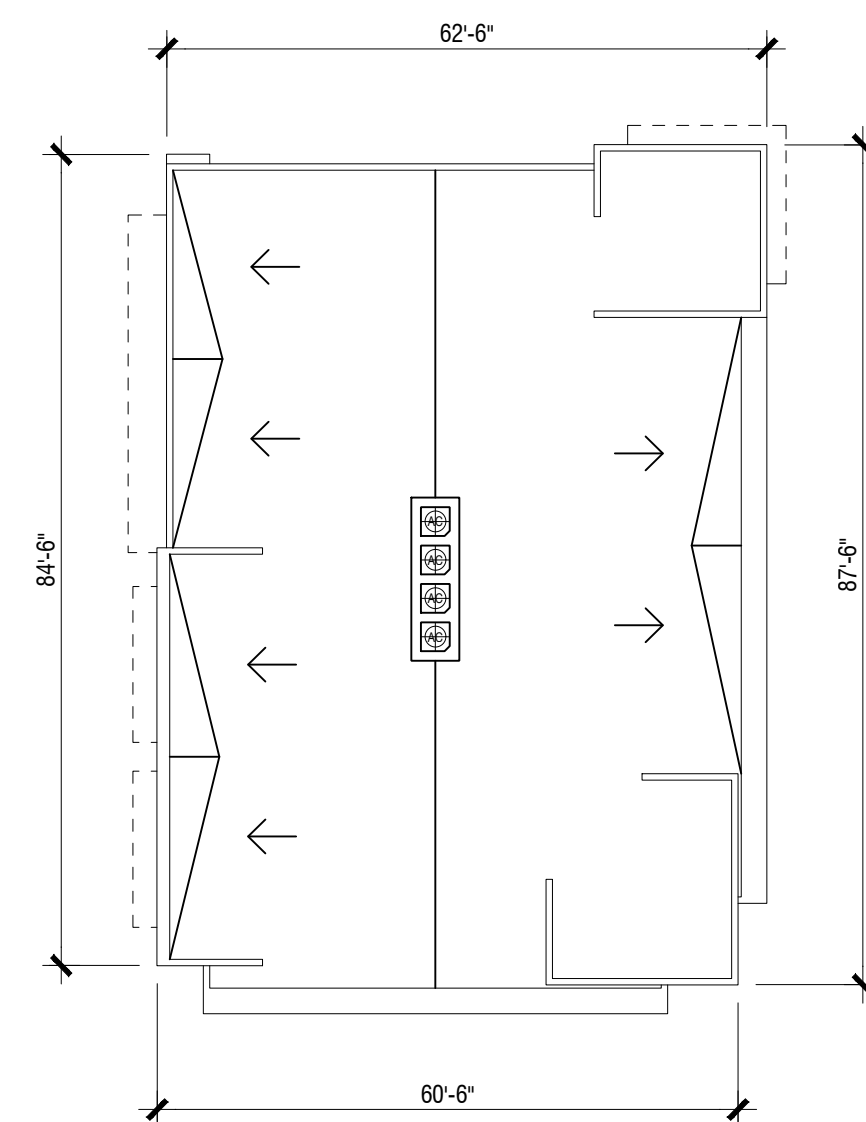
ROOF PLAN 2

KEY MAP



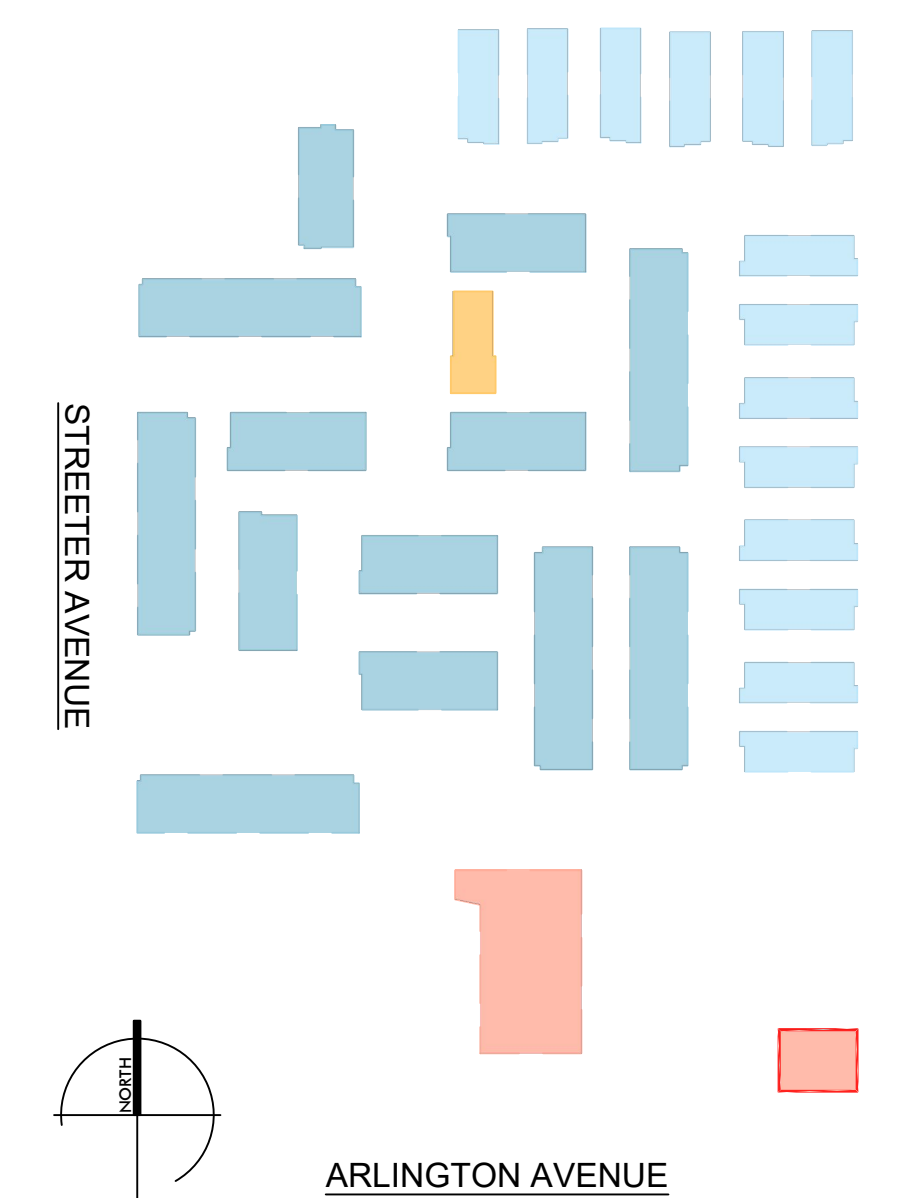


GROUND LEVEL 1



ROOF PLAN 2

KEY MAP

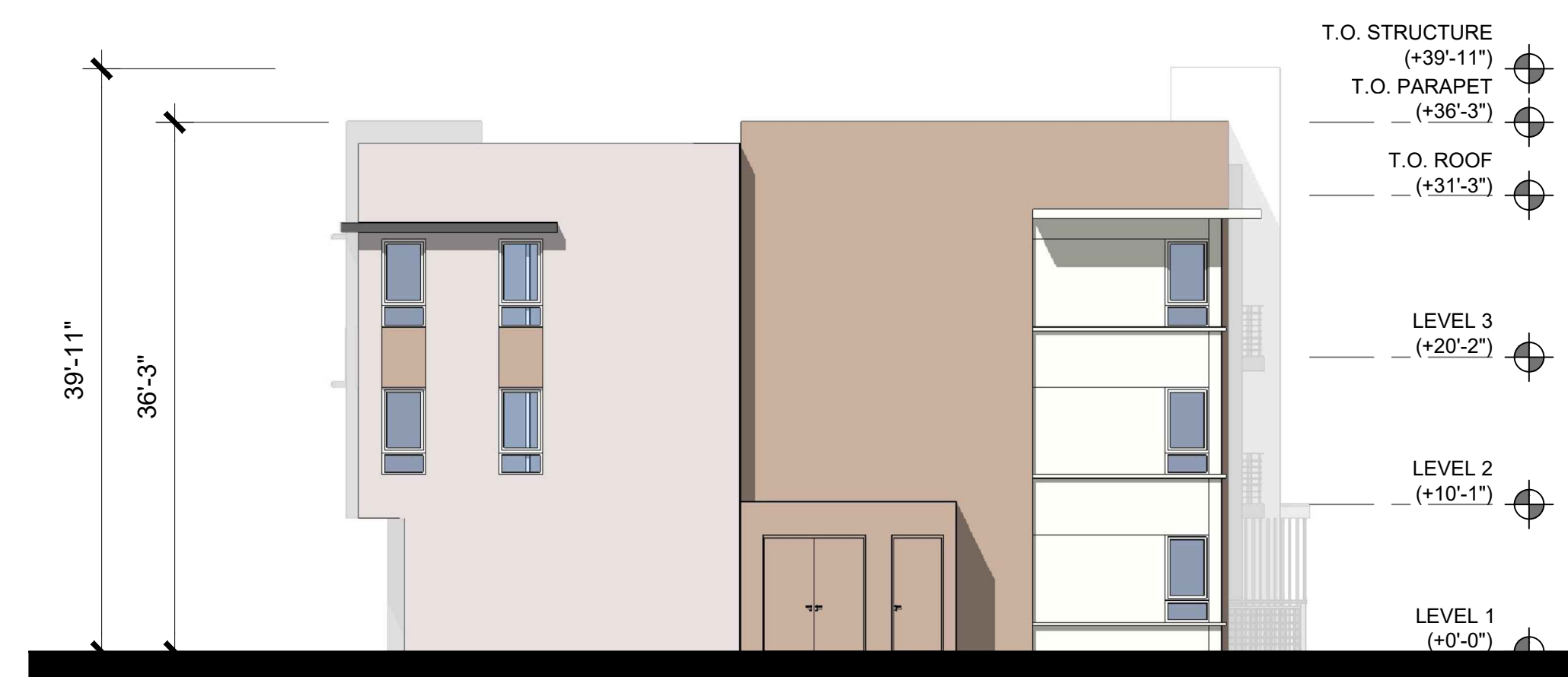


45'-0" MAXIMUM HEIGHT



EAST ELEVATION 1

45'-0" MAXIMUM HEIGHT



SOUTH ELEVATION 2

45'-0" MAXIMUM HEIGHT



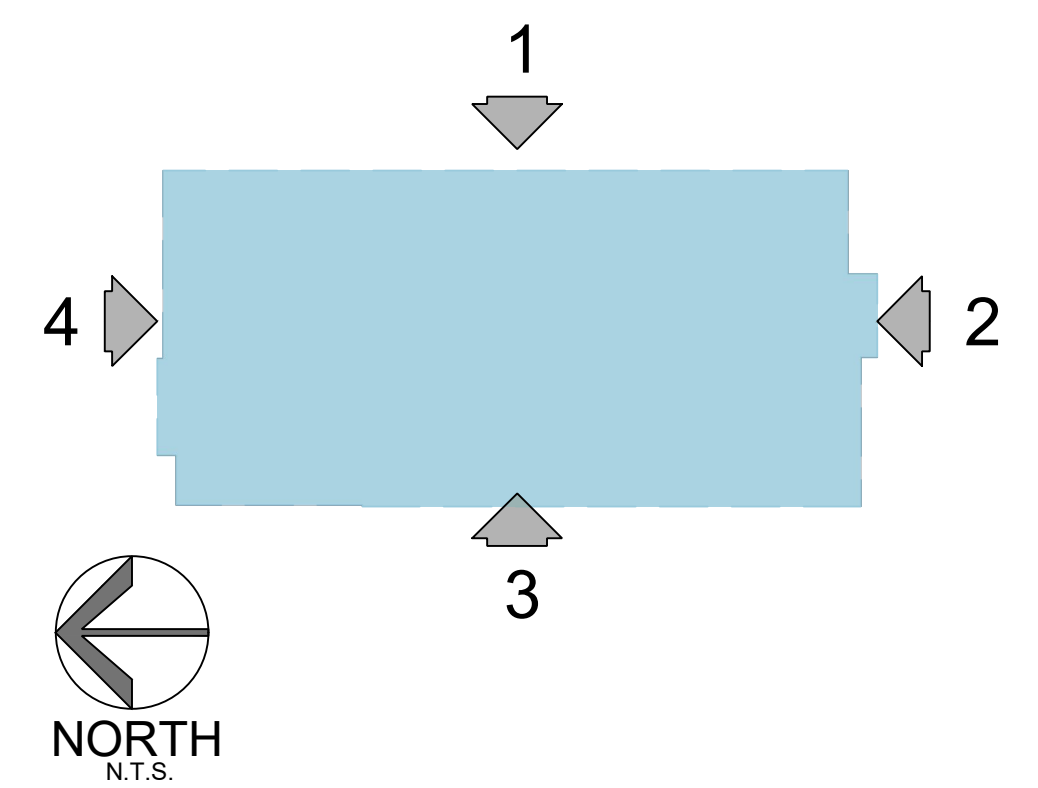
WEST ELEVATION 3

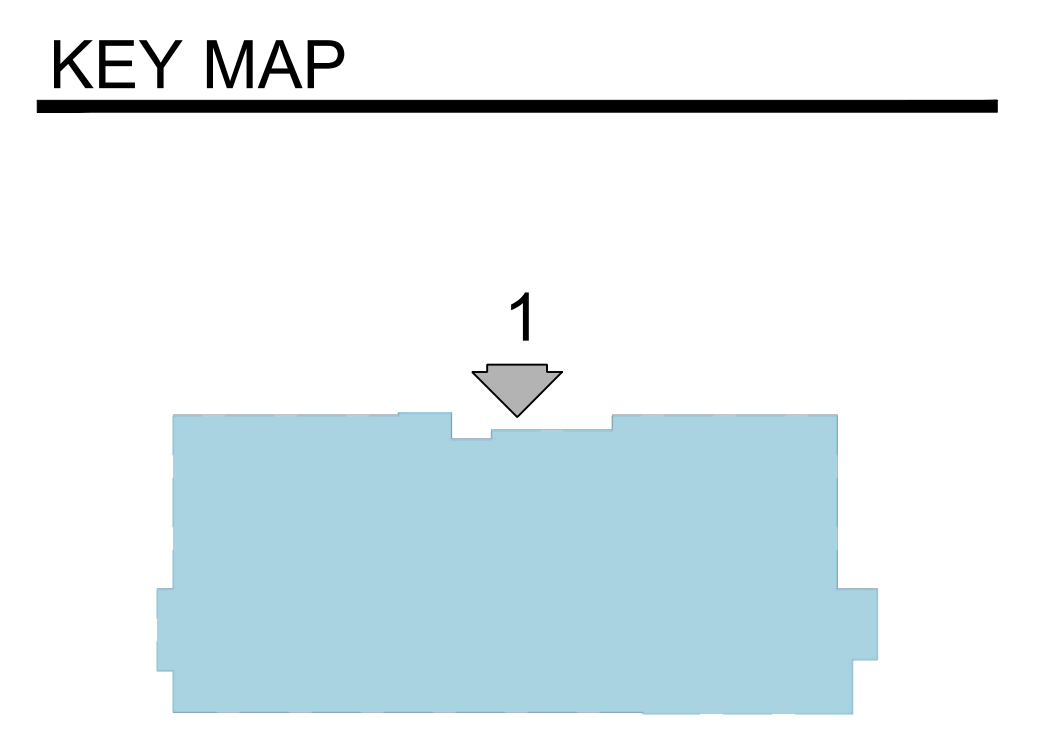
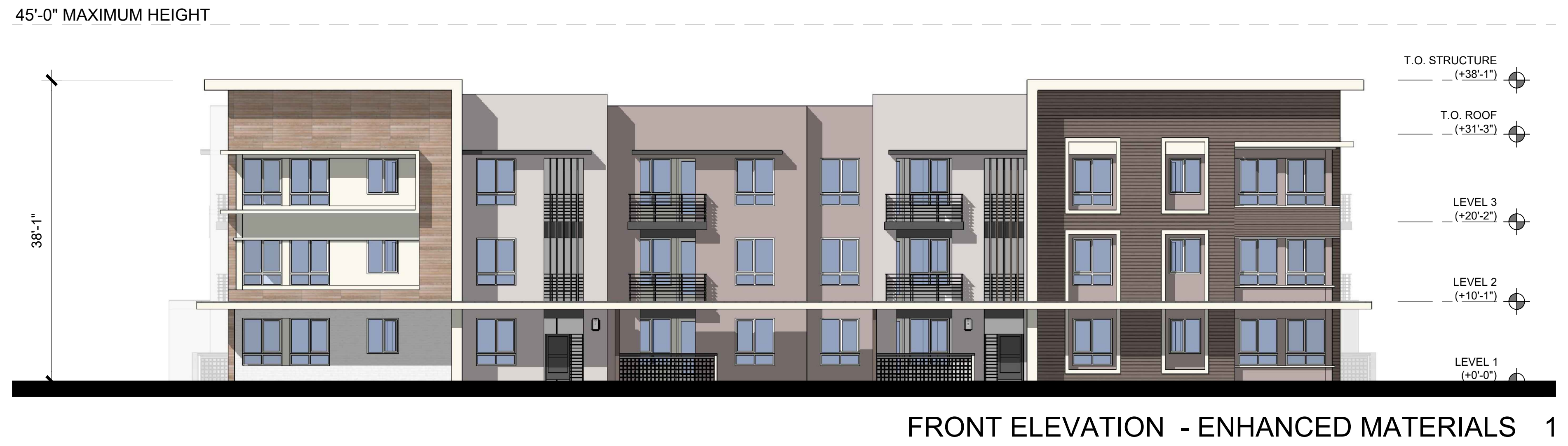
45'-0" MAXIMUM HEIGHT

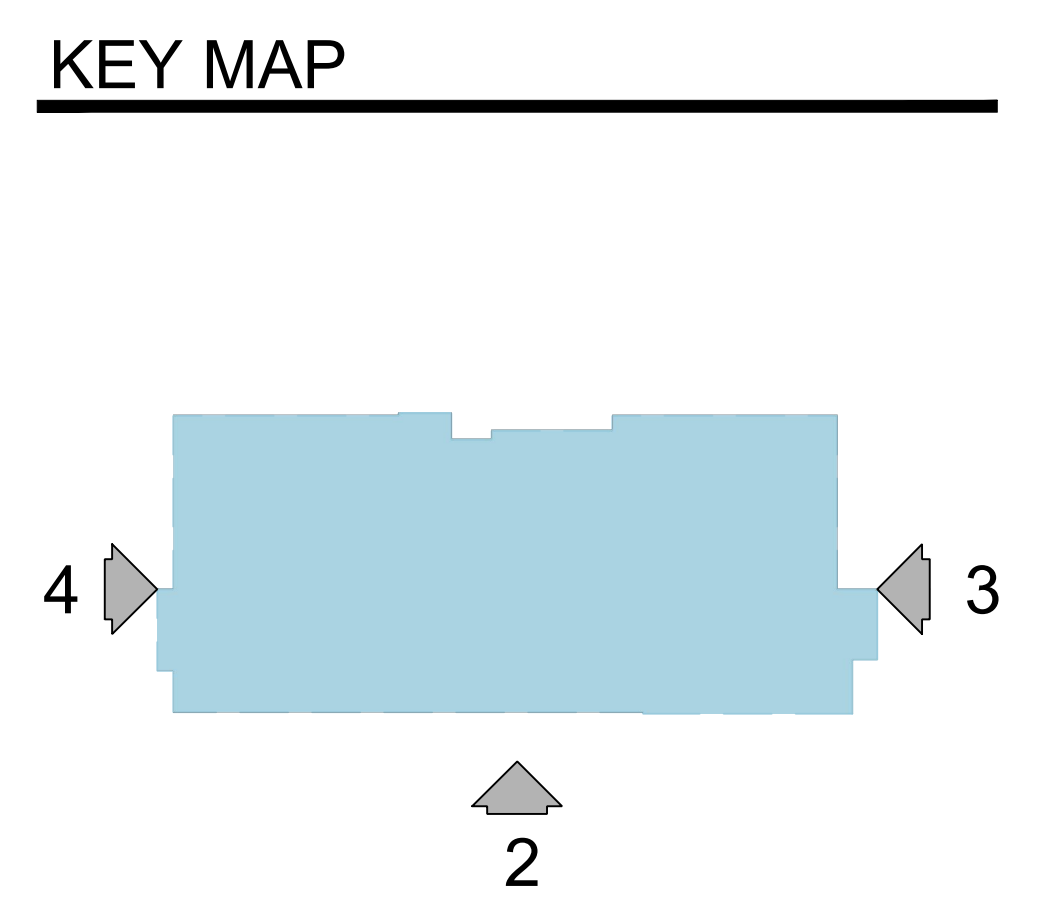


NORTH ELEVATION 4

KEY MAP





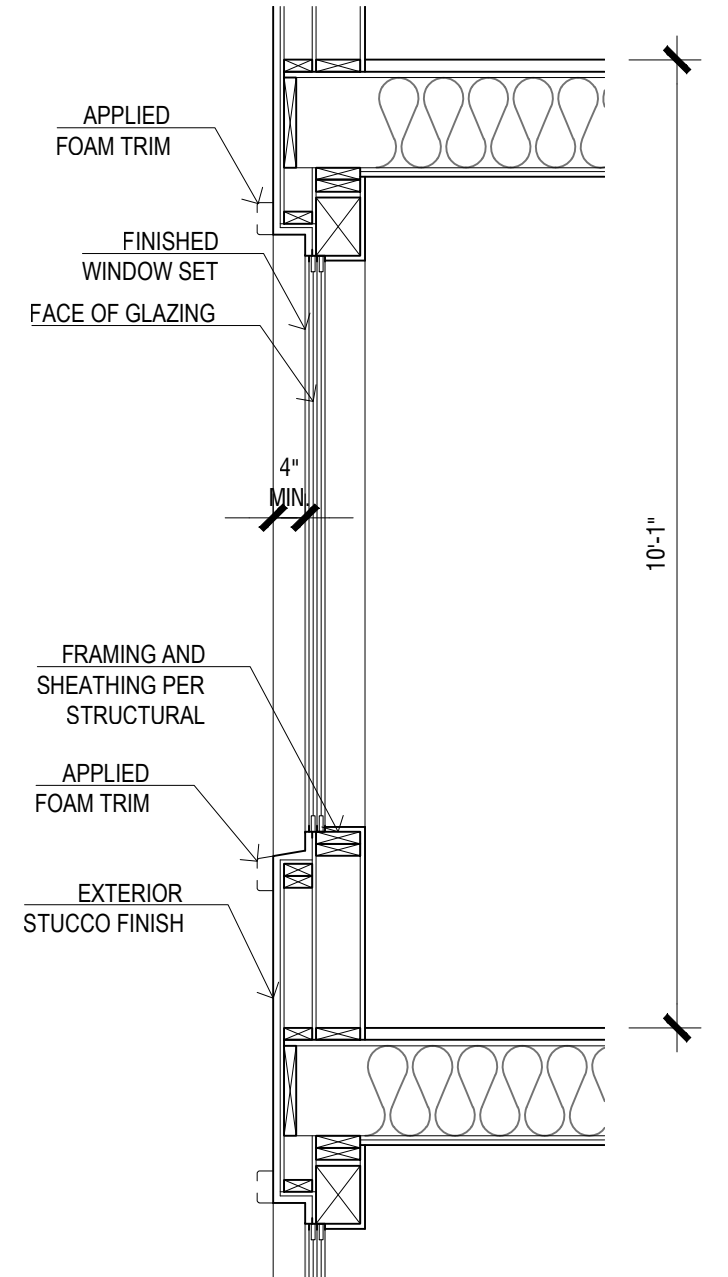


NOTE:
 UTILITY CLOSETS AS SHOWN BELOW ARE TYPICAL BUT WILL BE REPOSITIONED SO AS TO BE OUT OF VIEW OF THE PUBLIC RIGHT OF WAY ON BUILDING'S 1 AND 10. PLEASE REFERENCE SITE PLAN SHEET A1.2 FOR FINAL UTILITY CLOSET LOCATIONS FOR EACH BUILDING.

45'-0" MAXIMUM HEIGHT



FRONT ELEVATION - ENHANCED MATERIALS 1



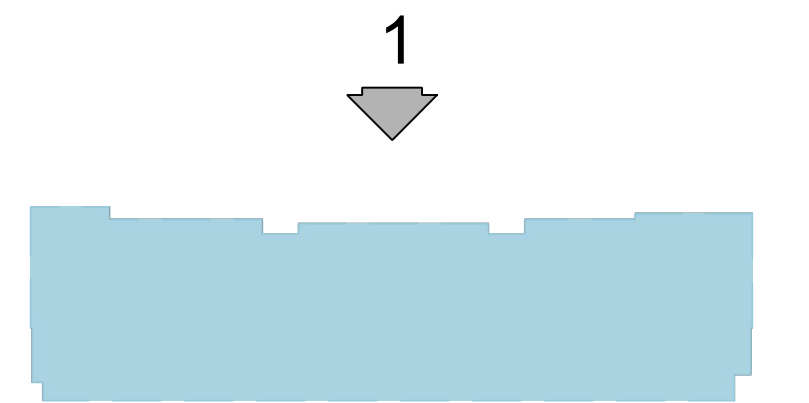
STUCCO WINDOW - RECESSED 4"
 (TO OCCUR ON WINDOWS FACING PUBLIC RIGHT OF WAY)
 SCALE: 1/2" = 1'-0"

45'-0" MAXIMUM HEIGHT

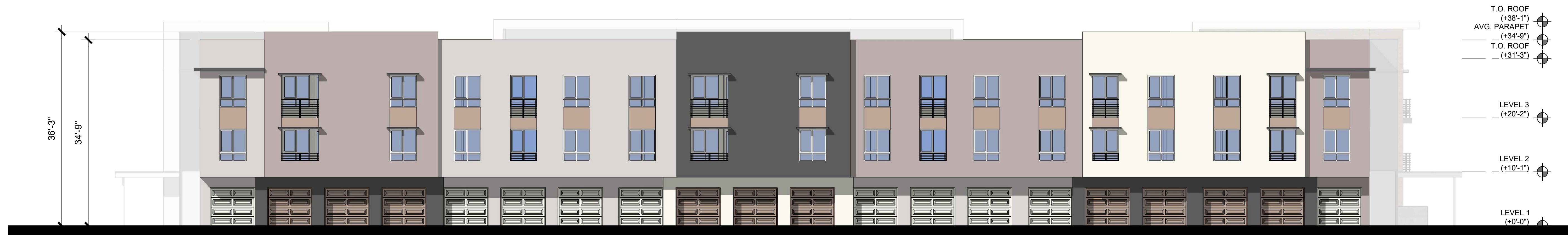


FRONT ELEVATION - ALL STUCCO 1

KEY MAP



45'-0" MAXIMUM HEIGHT



REAR ELEVATION 2

45'-0" MAXIMUM HEIGHT



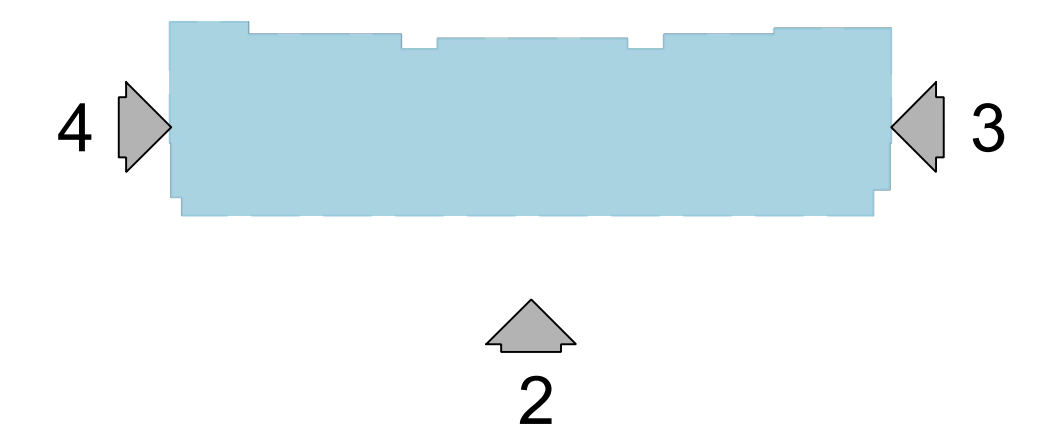
LEFT ELEVATION 3

45'-0" MAXIMUM HEIGHT



RIGHT ELEVATION 4

KEY MAP



45'-0" MAXIMUM HEIGHT



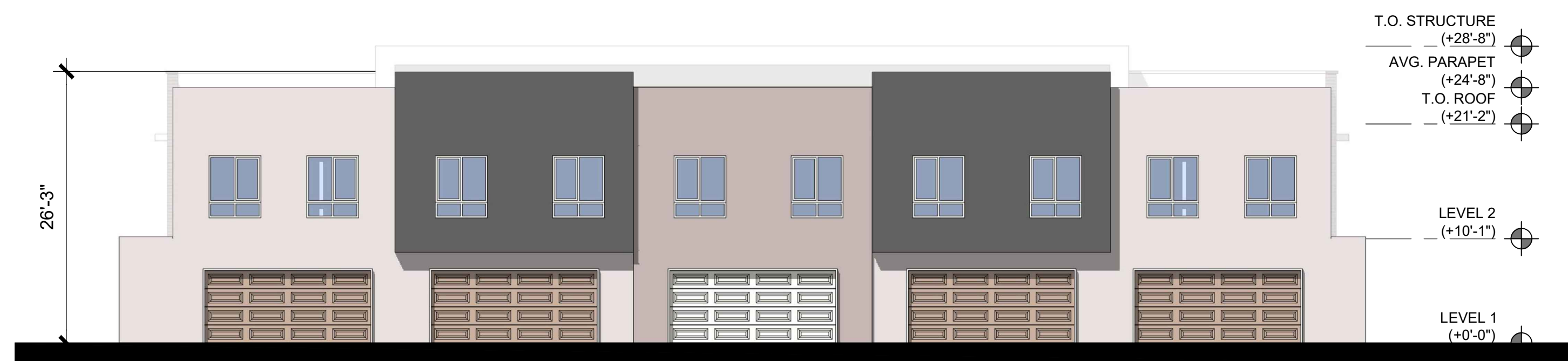
FRONT ELEVATION 1

45'-0" MAXIMUM HEIGHT 45'-0" MAXIMUM HEIGHT



LEFT ELEVATION 2

45'-0" MAXIMUM HEIGHT



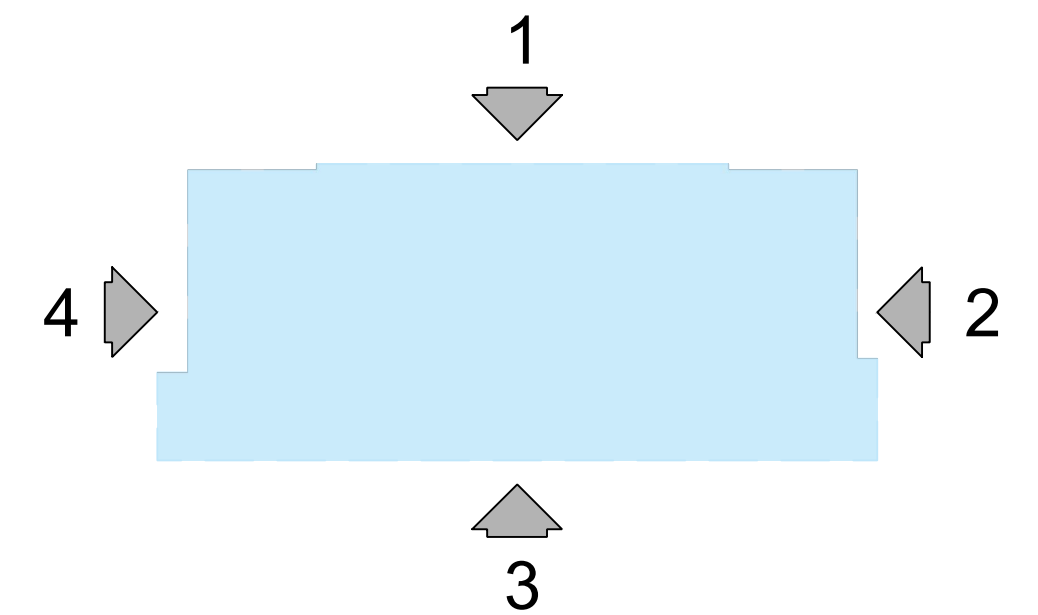
REAR ELEVATION 3

45'-0" MAXIMUM HEIGHT



RIGHT ELEVATION 4

KEY MAP



45'-0" MAXIMUM HEIGHT



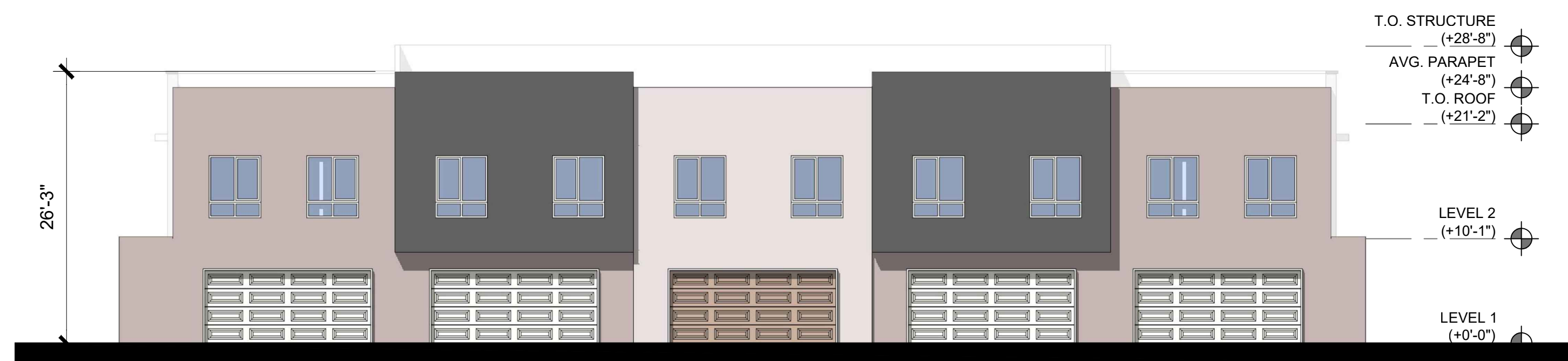
FRONT ELEVATION 1

45'-0" MAXIMUM HEIGHT



LEFT ELEVATION 2

45'-0" MAXIMUM HEIGHT



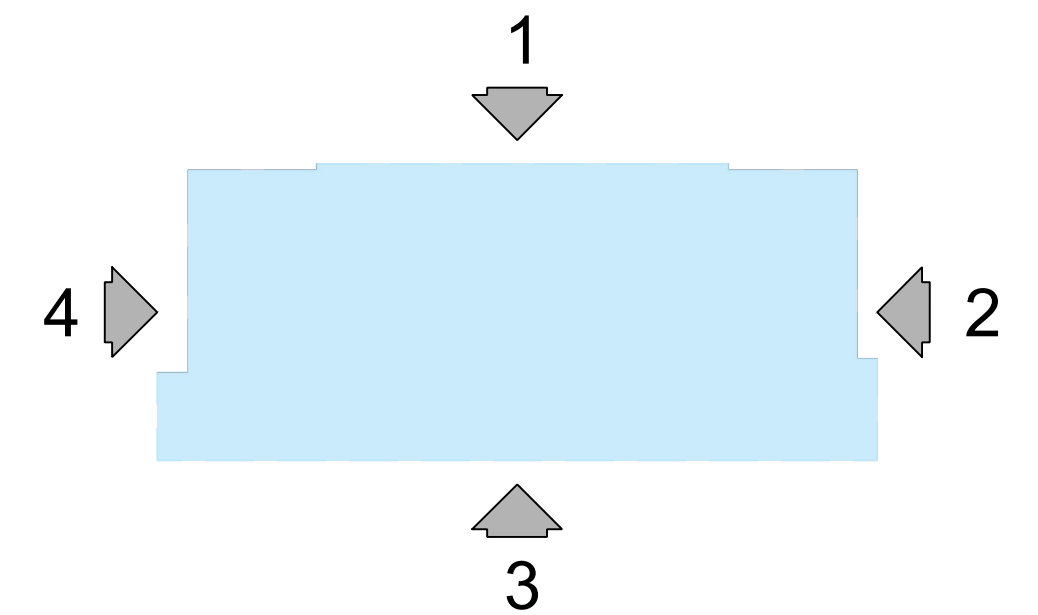
REAR ELEVATION 3

45'-0" MAXIMUM HEIGHT



RIGHT ELEVATION 4

KEY MAP



45'-0" MAXIMUM HEIGHT



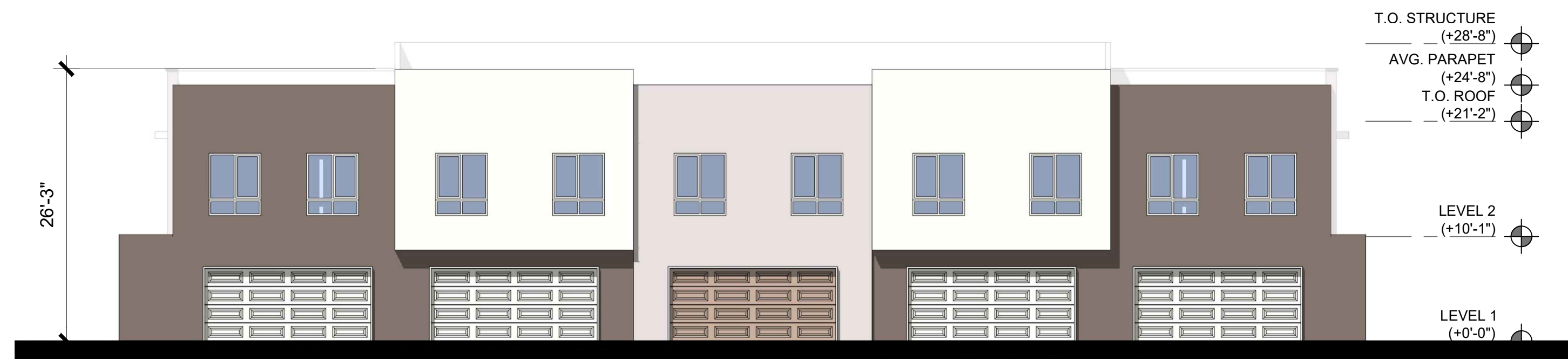
FRONT ELEVATION 1

45'-0" MAXIMUM HEIGHT



LEFT ELEVATION 2

45'-0" MAXIMUM HEIGHT



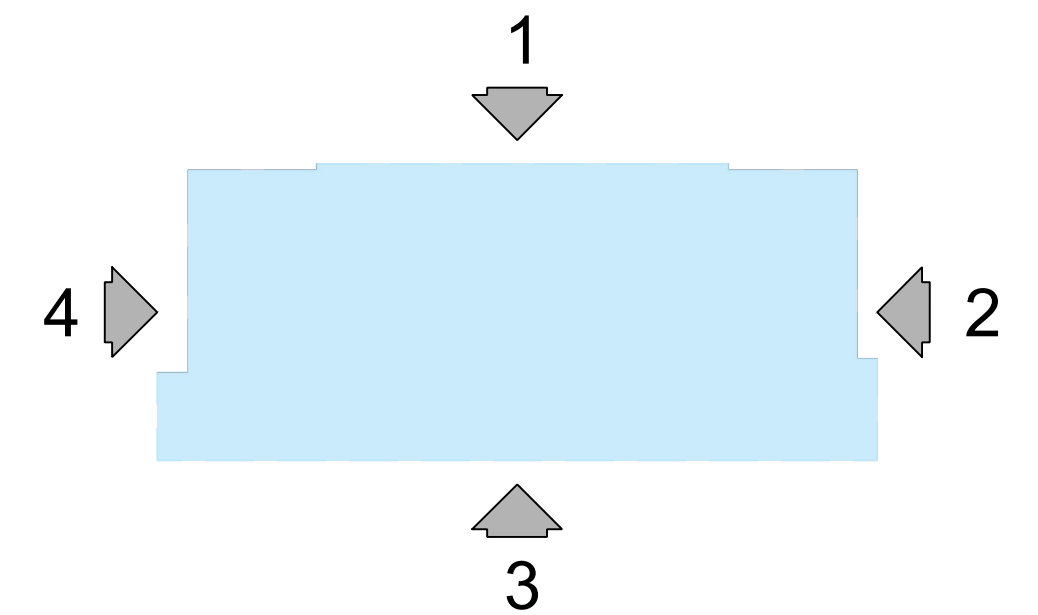
REAR ELEVATION 3

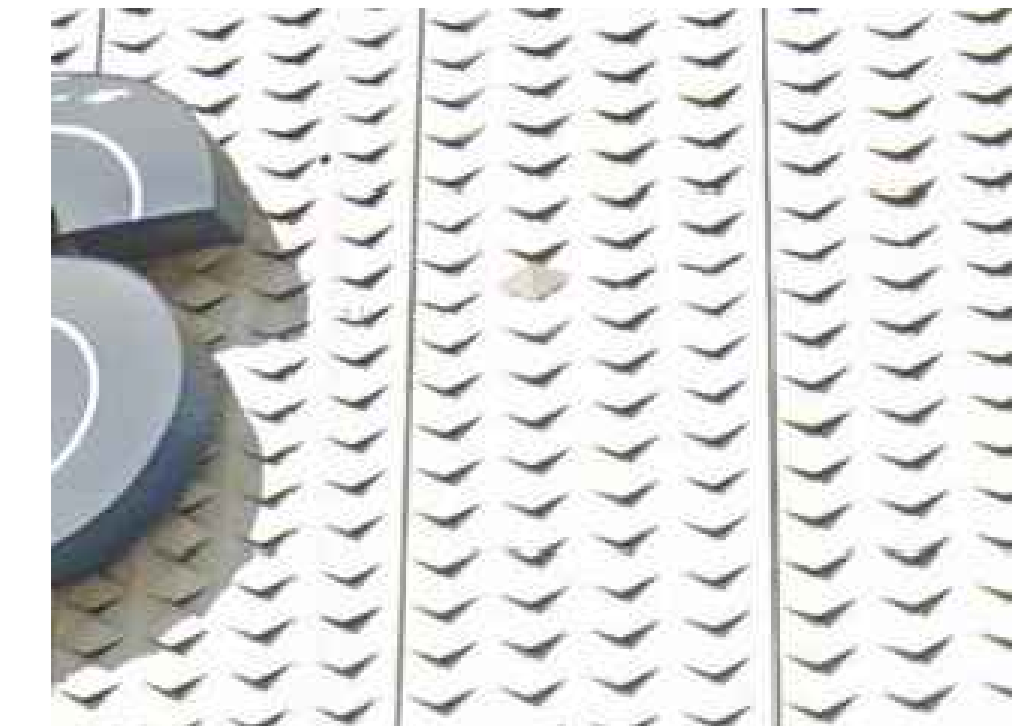
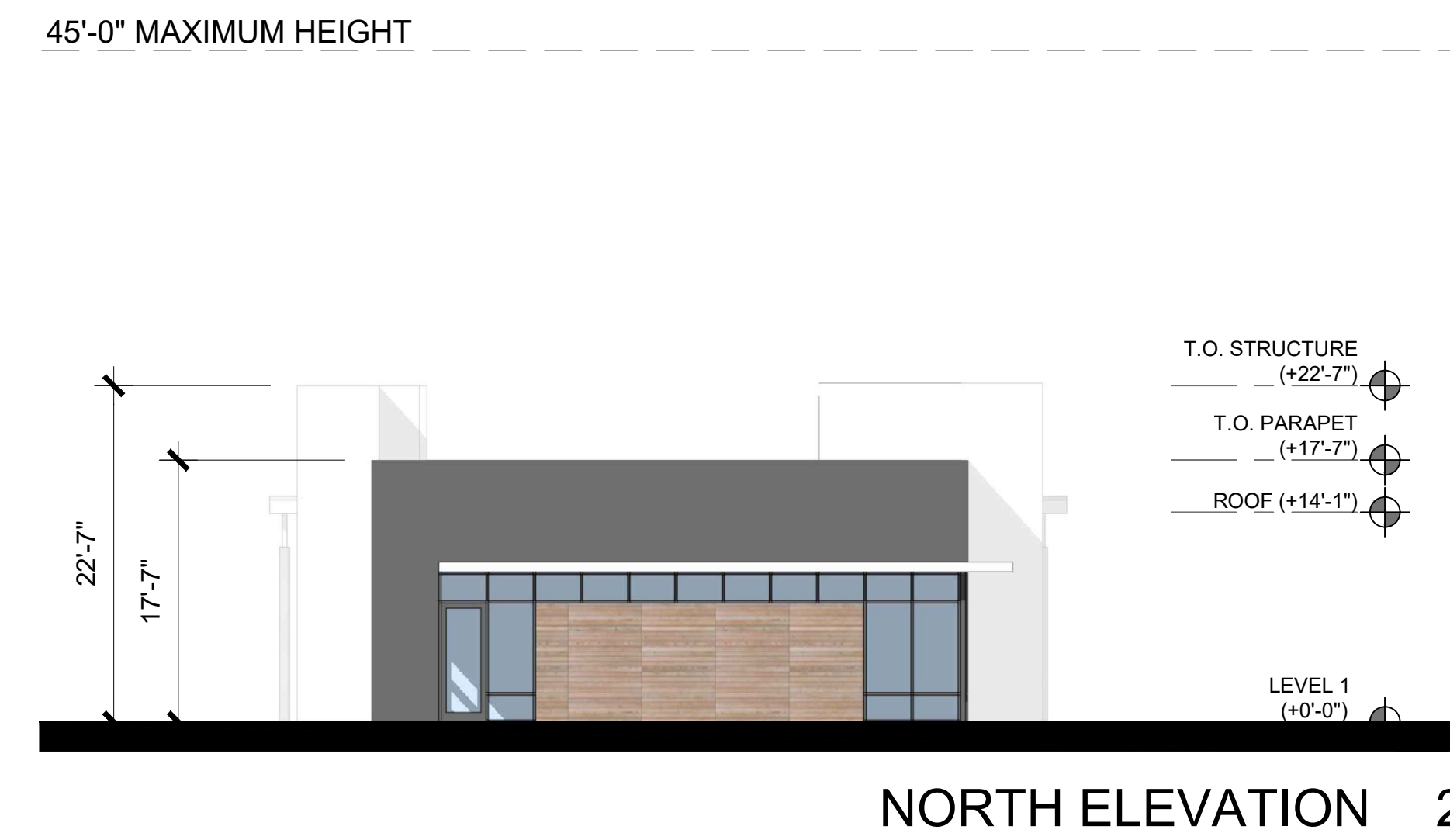
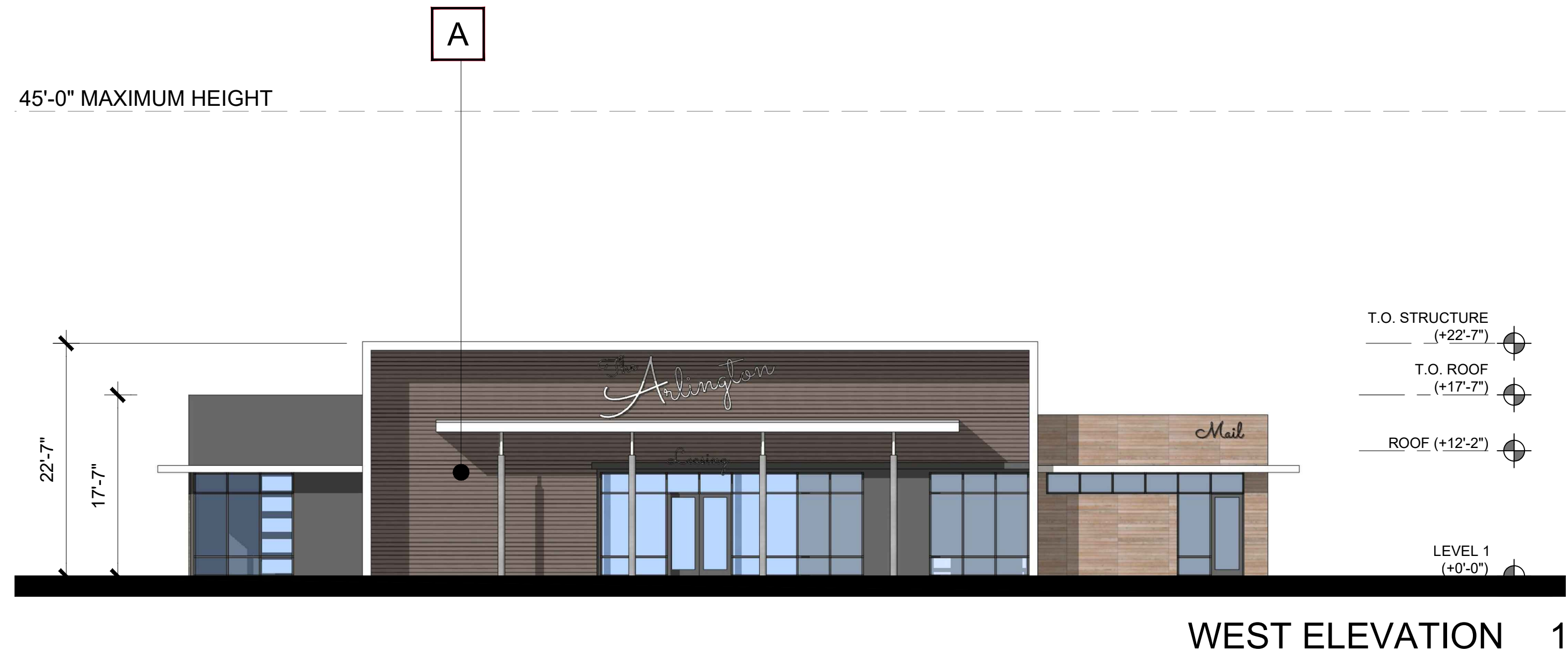
45'-0" MAXIMUM HEIGHT



RIGHT ELEVATION 4

KEY MAP

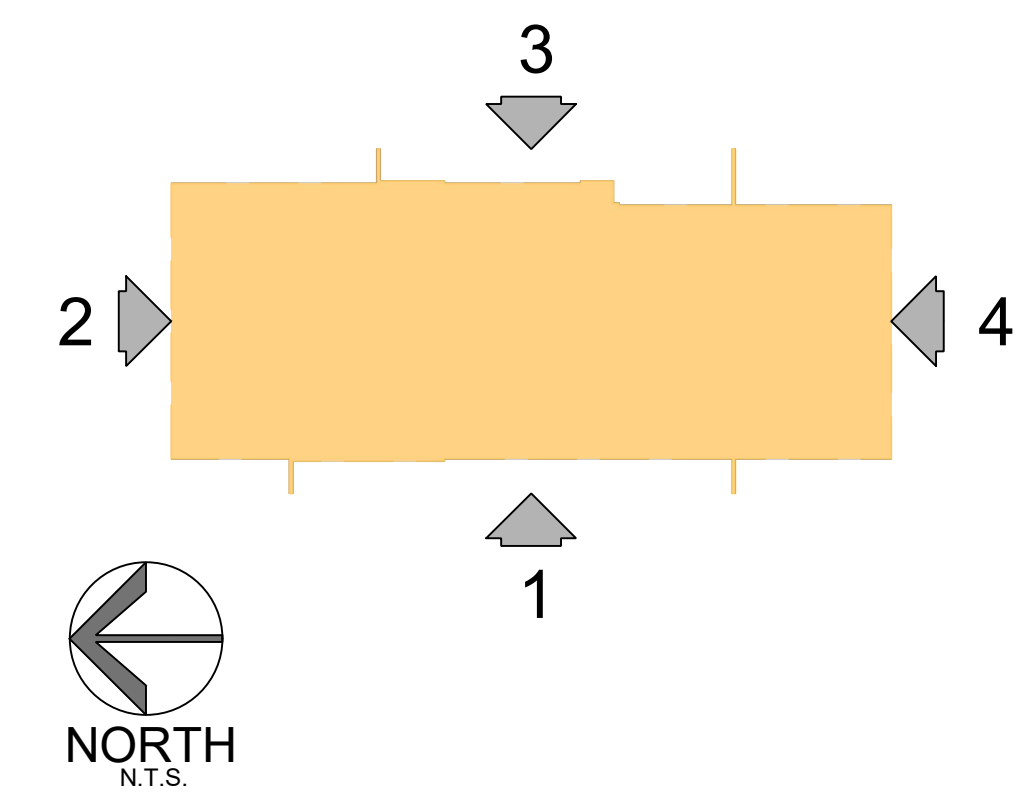




A. EXISTING DECORATIVE METAL FACADE ON SEARS (TO BE RE-PURPOSED ON CLUBHOUSE ELEVATION, IF FEASIBLE)



KEY MAP



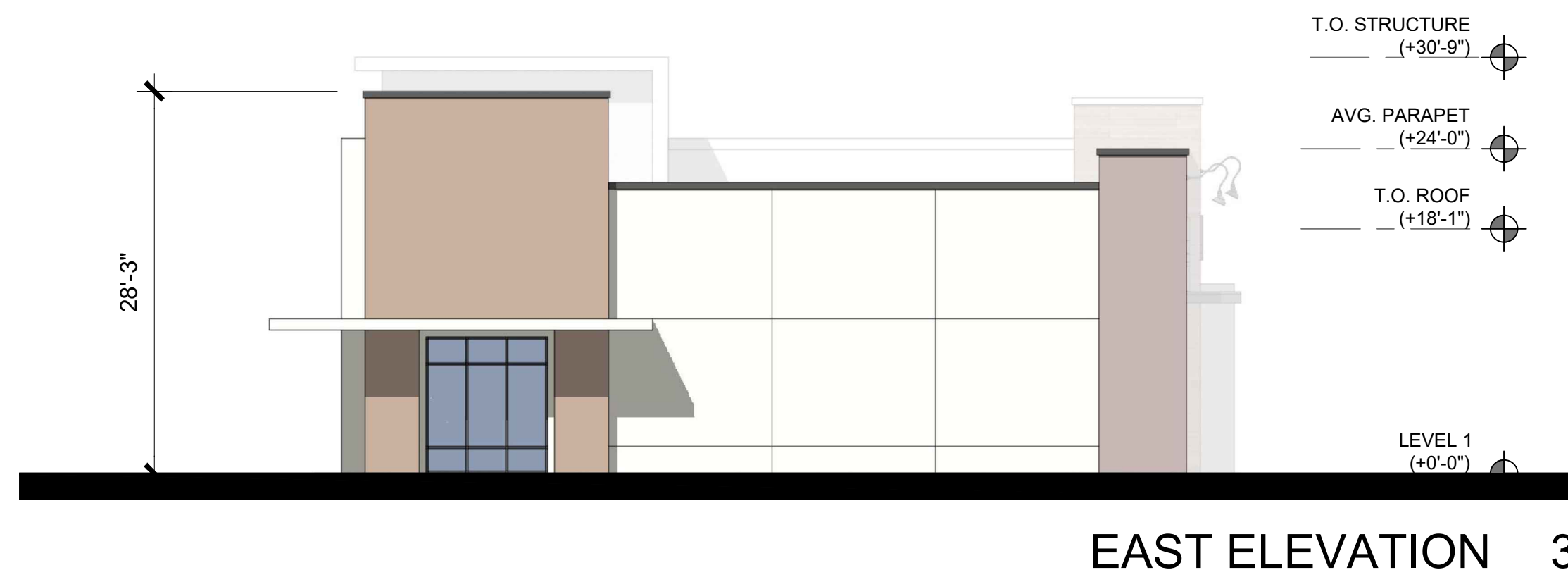
45'-0" MAXIMUM HEIGHT



45'-0" MAXIMUM HEIGHT



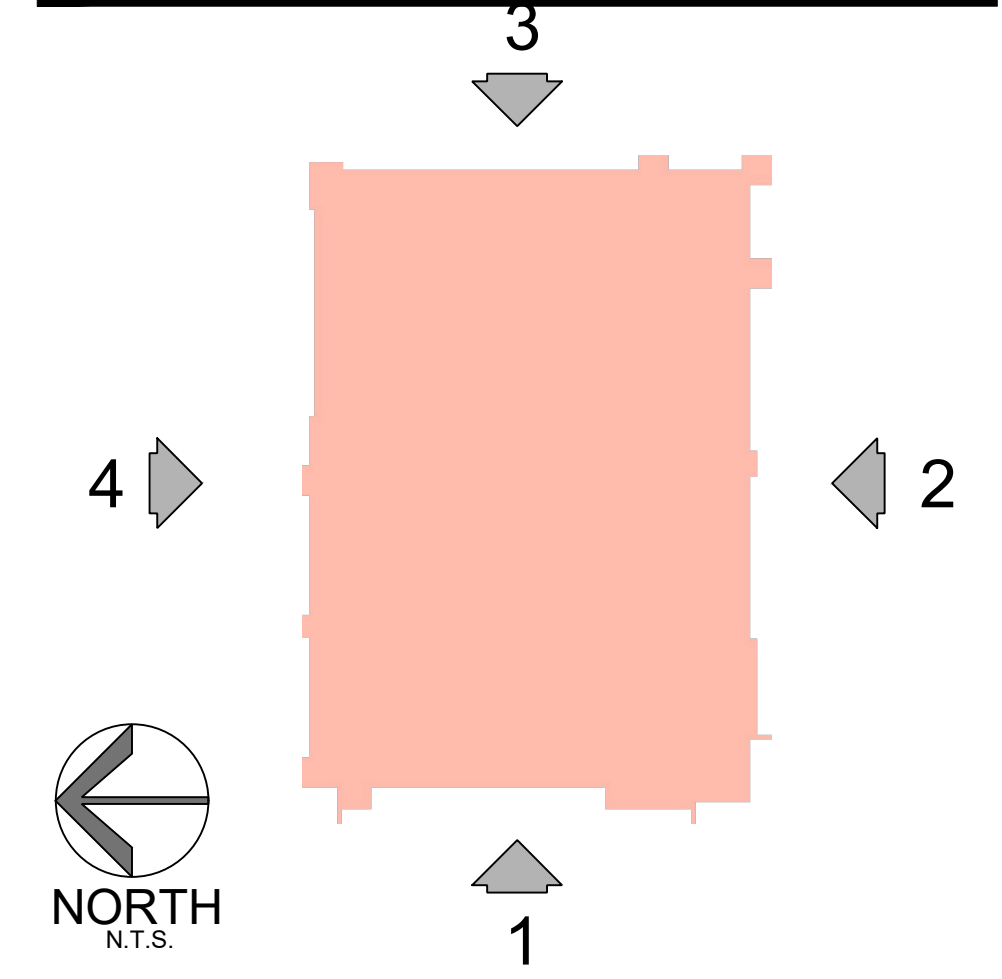
45'-0" MAXIMUM HEIGHT



45'-0" MAXIMUM HEIGHT



KEY MAP



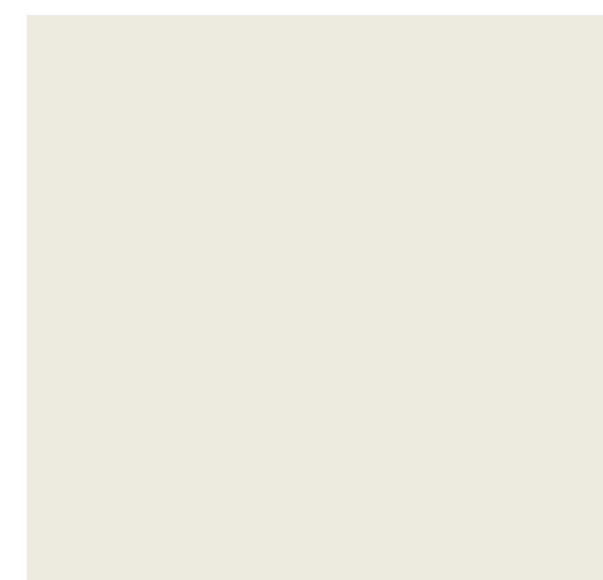


TYPE III - ENHANCED ELEVATION

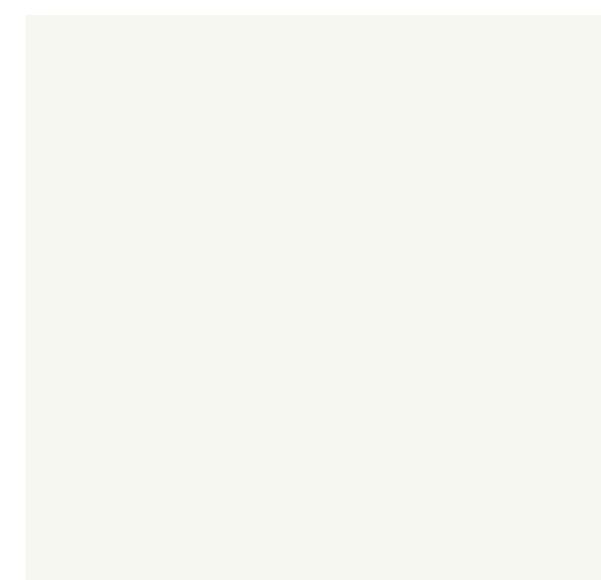


TYPE III - ALL-STUCCO ELEVATION

COLORS



A. SHERWIN WILLIAMS
SW 7008 - ALABASTER



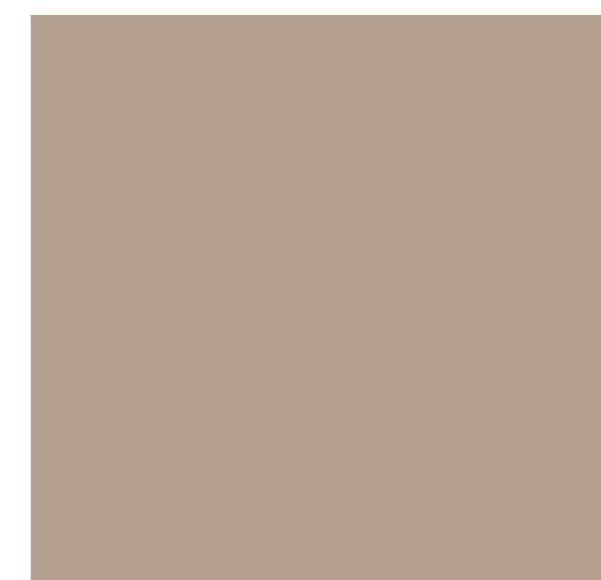
B. SHERWIN WILLIAMS
SW 7757 - HIGH REFLECTIVE
WHITE



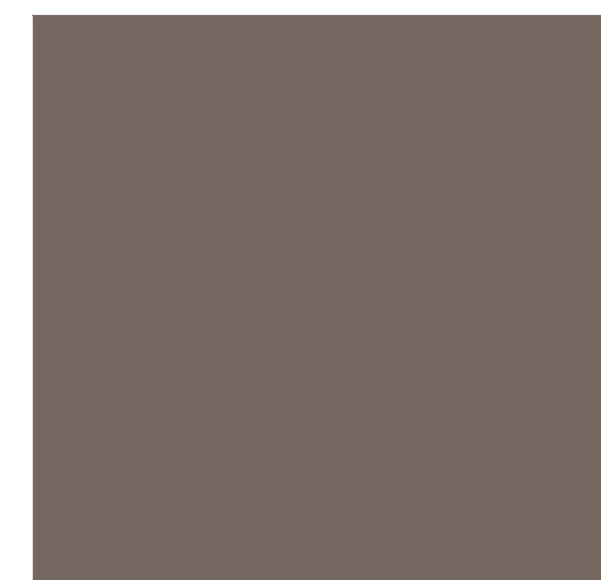
C. SHERWIN WILLIAMS
SW 6274 - DESTINY



D. SHERWIN WILLIAMS
SW 6010 - FLEXIBLE GRAY



E. SHERWIN WILLIAMS
SW 6087 - TRUSTY TAN

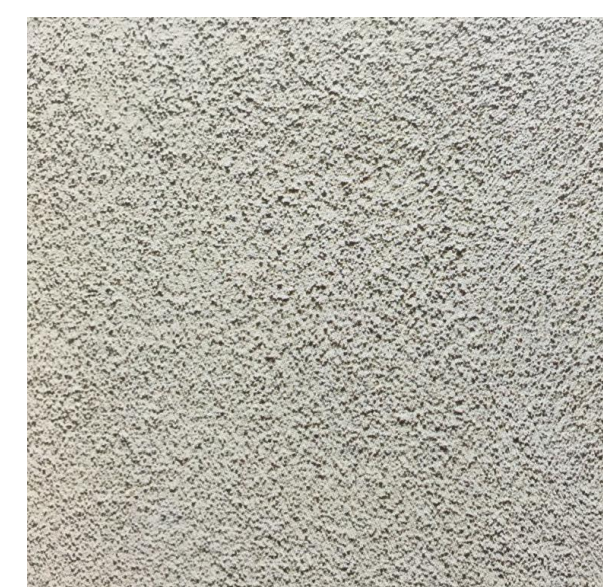


F. SHERWIN WILLIAMS
SW 6075 - GARRET GRAY



G. SHERWIN WILLIAMS
SW 7069 - IRON ORE

MATERIALS



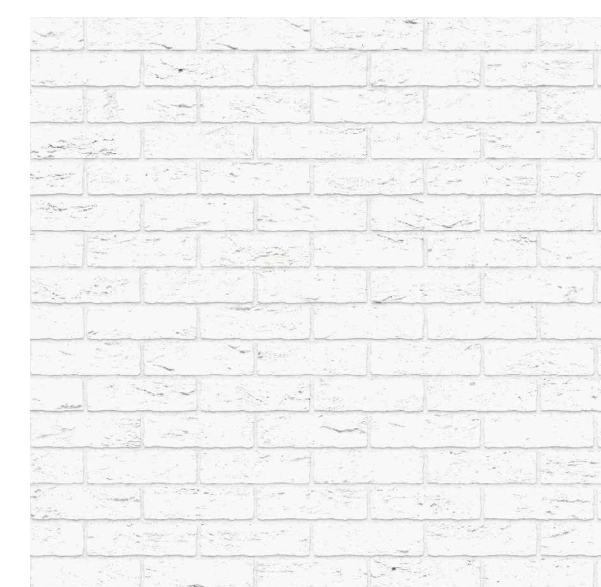
1. LIGHT SAND
STUCCO



2. HORIZONTAL
SIDING



3. PORCELAIN TILE -
DARK



4. BRICK VENEER



5. PERFORATED
METAL RAILING



6. METAL CANOPY



7. BREEZE BLOCK



8. VINYL WINDOWS

KEY MAP

