

# ARLINGTON MIXED USE

RIVERSIDE, CA

## 5TH ENTITLEMENT SUBMITTAL SET

MARCH 13, 2024



VIEW OF PROJECT ENTRY ALONG STREETER AVENUE

SHEET INDEX		
<b>ARCHITECTURE - AO</b>	<b>LANDSCAPE ARCHITECTURE</b>	
CS-1 COVER SHEET	L0.0	LANDSCAPE ILLUSTRATIVE PLAN
A1.1 DATA SUMMARY	L1.0	LANDSCAPE PLAN
A1.2 SITE PLAN	L1.1	LANDSCAPE ENLARGEMENT
A1.3 OPEN SPACE PLAN	L1.2	LANDSCAPE ENLARGEMENT
A1.4 FIRE ACCESS PLAN	L1.3	LANDSCAPE ENLARGEMENT
A1.5 PARKING PLAN	L1.4	LANDSCAPE ENLARGEMENT
A1.6 PEDESTRIAN PATH OF TRAVEL	L2.0	EXISTING TREE PLAN (EXISTING SITE)
A2.1 BUILDING PLANS - TYPE I	L2.1	EXISTING TREE PLAN (NEW SITE)
A2.2 BUILDING PLANS - TYPE II	L3.0	PLANTING PLAN
A2.3 BUILDING PLANS - TYPE III	L3.1	PLANTING PALETTE
A2.4 BUILDING PLANS - TYPE A	L3.2	PLANTING PALETTE
A2.5 BUILDING PLANS - CLUBHOUSE	L4.0	WALL & FENCE PLAN
A2.6 BUILDING PLANS - RETAIL PAD	L4.1	WALL & FENCE DETAILS
A3.1 ELEVATIONS - TYPE I	L4.2	WALL & FENCE DETAILS
A3.2 ELEVATIONS - TYPE II	L5.0	LANDSCAPE SITE FURNISHINGS
A3.3 ELEVATIONS - TYPE II	L5.1	LANDSCAPE SITE RENDERINGS
A3.4 ELEVATIONS - TYPE III		
A3.5 ELEVATIONS - TYPE III		
A3.6 ELEVATIONS - TYPE A	C1.0	TENTATIVE PARCEL MAP
A3.7 ELEVATIONS - TYPE A	C2.0	EXISTING CONDITIONS
A3.8 ELEVATIONS - TYPE A	C3.0	GRADING AND DRAINAGE PLAN
A3.9 ELEVATIONS - CLUBHOUSE	C4.0	UTILITY PLAN
A3.10 ELEVATIONS - RETAIL PAD	C5.0	SECTIONS
A4.1 COLOR & MATERIAL BOARD	C6.0	DEMOLITION PLAN
A5.1 3D VIEWS		
A5.2 3D VIEWS		
A5.3 3D VIEWS	1	PLAN VIEW
A5.4 3D VIEWS	2	PLAN VIEW: TOP LEFT OF LAYOUT
A6.1 UNIT PLANS - TUCK-UNDER	3	PLAN VIEW: TOP RIGHT OF LAYOUT
A6.2 UNIT PLANS - TOWNHOMES	4	PLAN VIEW: BOTTOM RIGHT OF LAYOUT
A7.1 TRASH ENCLOSURE DETAILS	5	PLAN VIEW: BOTTOM LEFT OF LAYOUT
A7.2 CARPORT DETAILS	6	GRAYSCALE RENDERINGS
	7	DATA SUMMARY
	8	DATA SUMMARY
<b>ARCHITECTURE - RDC</b>		
CFP CONCEPTUAL FLOOR PLAN	09 to 15	LIGHTING SAMPLE CUT SHEETS
RP ROOF PLAN		
CEE-1 CONCEPTUAL EXTERIOR ELEVATIONS		
CEE-1.1 CONCEPTUAL EXTERIOR ELEVATIONS		

### PROJECT TEAM

**OWNER/APPLICANT:**  
**RIVERSIDE PROPERTY OWNER, LLC**  
12435 Park Potomac Avenue,  
Suite 200  
Potomac, MD 20854  
(949)546-9572  
Contact:  
Jamie Chapman, Jim Ivory  
jchapman@foulgerpratt.com,  
jivory@foulgerpratt.com

**DEVELOPER:**  
**FOULGER PRATT**  
163 Calle de Los Molinos  
San Clemente, CA 92672  
(949)546-9572  
Contact:  
Jamie Chapman, Jim Ivory  
jchapman@foulgerpratt.com,  
jivory@foulgerpratt.com

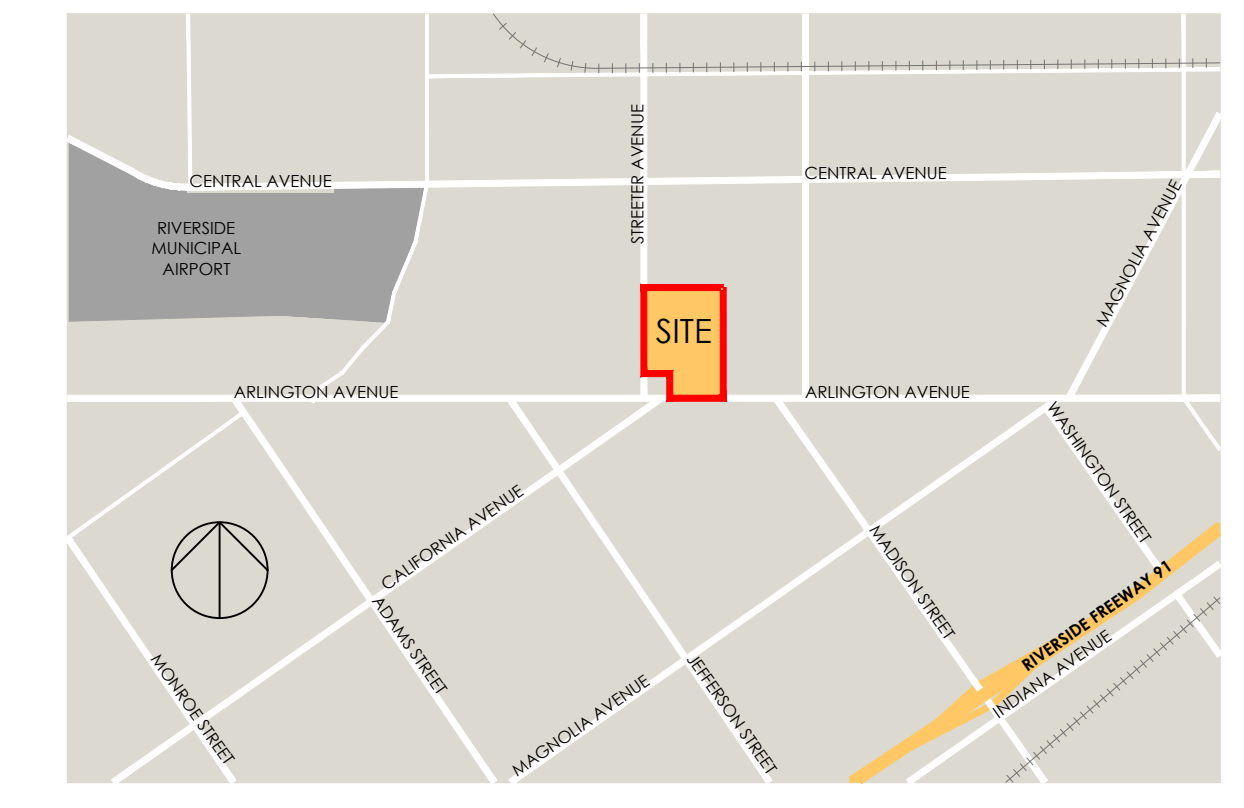
**DEVELOPER:**  
**SERITAGE**  
11601 Wilshire Boulevard,  
Suite 400  
Los Angeles, CA 90025  
(424) 901-7632  
Contact: John Reischl  
jreischl@seritage.com

**RESIDENTIAL ARCHITECT:**  
**AO ARCHITECTS**  
144 North Orange Street  
Orange, CA 92866  
(714)639-9860  
Contact: Ioanna Magiati,  
Salvador Madera  
ioannam@aoarchitects.com,  
salvadorsm@aoarchitects.com

**LANDSCAPE ARCHITECT:**  
**URBAN ARENA**  
11300 Sorrento Valley Road,  
Suite 230  
San Diego, CA 92121  
(858)625-0112  
Contact: Phillip Barnes  
phillip@urbanarena.com

**CIVIL ENGINEER:**  
**PSOMAS**  
1650 Spruce Street,  
Suite 400  
Riverside, CA 92507  
(951)300-2805  
Contact: David Brotchie  
david.brotchie@psomas.com

### VICINITY MAP N.T.S.



**ARLINGTON MIXED USE**  
Riverside, CA

**REVISED- Image changed**

Cover Sheet



**CS-1**

Scale N/A  
Job No. 2020-0055  
Date 03-25-2024



**ARLINGTON MIXED USE**

PROJECT DESCRIPTION	
A MIXED USE PROJECT WITH A 388-UNIT MULTIFAMILY RESIDENTIAL COMPONENT CONSISTING OF THIRTEEN (13) 3-STORY TUCK-UNDER AND FOURTEEN (14) 2-STORY TOWNHOME BUILDING TYPES AS WELL AS A COMMERCIAL PORTION THAT INCLUDES A 20,320 SQ. FT. GROCERY AND A 5,000 SQ. FT. RETAIL PAD.	
GROSS LAND AREA (IN ACRES):	17.43
TOTAL UNITS:	388
DENSITY (DWELLING UNITS PER ACRE):	22.3
FLOOR AREA RATIO (MAXIMUM 2.5):	0.6
EXISTING AND PROPOSED ZONING	
EXISTING	COMMERCIAL RETAIL (CR)
PROPOSED	MIXED USE-VILLAGE (MU-V)

VEHICLE PARKING - REQUIRED					
<b>RESIDENTIAL PARKING REQUIRED (9'-0"X18'-0")</b>					
UNIT TYPE	NUMBER OF UNITS	REQUIRED RATIO	TOTAL STALLS REQUIRED		
STUDIOS	18	1.0	18		
1 BEDROOM	152	1.5	228		
2 BEDROOM	158	2.0	316		
3 BEDROOM	60	2.0	120		
<b>TOTAL UNITS</b>	<b>388</b>				
<b>TOTAL RESIDENTIAL PARKING REQUIRED:</b>			<b>682</b>		
COVERED RESIDENTIAL PARKING REQUIRED:		75%	512		
<b>PARKING RATIO:</b>			<b>1.8</b>		
<b>RETAIL PARKING REQUIRED (9'-0"X18'-0")</b>					
PARKING TYPE PER USE	TOTAL FLOOR AREA (SQ. FT.)	RATIO PER SQ. FT.	STALLS REQUIRED		
GROCERY	20,320	1 PER 250	82		
RETAIL PAD	5,000	1 PER 100	50		
<b>TOTAL RETAIL PARKING REQUIRED:</b>			<b>132</b>		
<b>DESIGNATED USPS STALL REQUIRED (9'-0"X18'-0")</b>					
			<b>1</b>		
<b>ACCESSIBLE STALLS REQUIRED (MIN. 9'-0"X18'-0")</b>					
PARKING TYPE PER USE	QTY.	RATIO	REQ.	OF REQUIRED	
				STD.	VAN**
ADA - RESIDENTIAL COVERED*	512	2.0%	11	9	2
ADA - RESIDENTIAL GUEST*	170	5.0%	9	7	2
ADA - RETAIL*	132	5.0%	7	6	1
<b>TOTAL:</b>			<b>27</b>	<b>22</b>	<b>5</b>
<b>TOTAL ACCESSIBLE STALLS REQUIRED:</b>				<b>27</b>	
<b>EVCS STALLS REQUIRED (MIN. 9'-0"X18'-0")</b>					
PARKING TYPE PER USE	QTY.	RATIO	REQ.	ACCESSIBLE REQUIRED***	
EVCS - RESIDENTIAL COVERED*	512	10.0%	52	3	
EVCS - RESIDENTIAL GUEST*	170	10.0%	17	1	
EVCS - RETAIL*	132	10.0%	14	1	
<b>TOTAL EVCS STALLS REQUIRED:</b>				<b>83</b>	

\*NOTE: INCLUDED IN PARKING COUNT  
 \*\*PROVIDE (1) VAN ACCESSIBLE STALL FOR EVERY 8 ACCESSIBLE STALLS PROVIDED  
 \*\*\*PROVIDE (1) ACCESSIBLE STALL FOR EVERY 25 EVCS STALLS PROVIDED

<b>TOTAL STALLS REQUIRED</b>				<b>815</b>
------------------------------	--	--	--	------------

**BUILDING SUMMARY - COMMERCIAL**

BUILDING	BUILDING USE	TOTAL FLOOR AREA (SQ. FT.)
GROCERY	RETAIL SALES	20,320
RETAIL PAD	RETAIL SALES	5,000
<b>TOTAL COMMERCIAL FLOOR AREA</b>		<b>25,320</b>

**UNIT SUMMARY**

UNIT TYPE	UNIT FLOOR AREA (SQ. FT.)	NUMBER OF UNITS	TOTAL DU FLOOR AREA (SQ. FT.)	%
S1	597	18	10,746	4.6%
A1	745	66	49,170	17.0%
A2	770	86	66,220	22.2%
B1	1,020	40	40,800	10.3%
B2	1,054	36	37,944	9.3%
B3	1,162	28	32,536	7.2%
B4	1,205	54	65,070	13.9%
C1	1,265	18	22,770	4.6%
C2	1,307	42	54,894	10.8%
<b>TOTAL</b>	<b>980 AVG.</b>	<b>388</b>	<b>380,150</b>	<b>100%</b>

**VEHICLE PARKING - PROVIDED**

RESIDENTIAL						
PARKING TYPE	STD.	ADA		EVCS		TOTAL
		STD.	VAN	STD.	ADA	
GARAGE STALLS	307	6		36		349
CARPOR STALLS	150	3	2	17	1	173
OPEN STALLS	72	7	2	13	2	96
DIAGONAL STALLS	12					12
TANDEM STALLS	52					52
USPS STALL	1					1
<b>SUBTOTAL</b>	<b>594</b>	<b>16</b>	<b>4</b>	<b>66</b>	<b>3</b>	<b>683</b>
		20		69		
<b>TOTAL RESIDENTIAL PARKING PROVIDED:</b>						
COVERED RESIDENTIAL PARKING PROVIDED:					522	76.4%
RETAIL						
PARKING TYPE	STD.	ADA		EVCS		TOTAL
		STD.	VAN	STD.	ADA	
OPEN - GROCERY LOT	50	3	1	6	1	61
OPEN - RETAIL PAD LOT	61	3		6	1	71
<b>SUBTOTAL</b>	<b>111</b>	<b>6</b>	<b>1</b>	<b>12</b>	<b>2</b>	<b>132</b>
		7		14		
<b>TOTAL RETAIL PARKING PROVIDED:</b>						
<b>TOTAL PARKING PROVIDED:</b>						<b>815</b>

**BICYCLE PARKING**

SHORT-TERM BICYCLE PARKING			
RATIO	TOTAL VEHICLE PARKING STALLS	TOTAL BICYCLE STALLS REQUIRED	TOTAL BICYCLE STALLS PROVIDED
0.05	815	41	41
SHORT-TERM BICYCLE PARKING			
RATIO	TOTAL VEHICLE PARKING STALLS	TOTAL BICYCLE STALLS REQUIRED	TOTAL BICYCLE STALLS PROVIDED
0.05	815	41	41

**BUILDING SUMMARY - RESIDENTIAL**

BUILDING NUMBER	BUILDING TYPE	STUDIO	1 BEDROOM		2 BEDROOM				3 BEDROOM		TOTAL	GARAGE STALLS
			A1	A2	B1	B2	B3	B4	C1	C2		
1	3-STORY TUCK-UNDER	III	6	8	4	6		3	3		30	20
2			6	8	4	6		3	3		30	20
3			12	2	4						18	11
4		II	3	3	6	2			6		20	13
5			3	3	6	2			6		20	13
6			3	3	6	2			6		20	13
7			3	3	6	2			6		20	13
8			3	3	6	2			6		20	13
9			3	3	6	2			6		20	13
10		III	6	8	4	6		3	3		30	20
11			6	8	4	6		3	3		30	20
12			6	8	4	6		3	3		30	20
13			6	8	4	6		3	3		30	20
<b>TUCK-UNDER UNIT SUBTOTAL</b>		<b>18</b>	<b>66</b>	<b>86</b>	<b>40</b>	<b>36</b>	<b>0</b>	<b>54</b>	<b>18</b>	<b>0</b>	<b>318</b>	<b>209</b>
<b>%</b>		<b>4.6%</b>	<b>39.2%</b>		<b>33.5%</b>				<b>4.6%</b>			
14	2-STORY TOWNHOME	A					2			3	5	10
15							2			3	5	10
16							2			3	5	10
17							2			3	5	10
18							2			3	5	10
19							2			3	5	10
20							2			3	5	10
21							2			3	5	10
22							2			3	5	10
23							2			3	5	10
24							2			3	5	10
25							2			3	5	10
26							2			3	5	10
27					2			3	5	10		
<b>TOWNHOME UNIT SUBTOTAL</b>		<b>0</b>	<b>0</b>	<b>0</b>	<b>0</b>	<b>0</b>	<b>28</b>	<b>0</b>	<b>0</b>	<b>42</b>	<b>70</b>	<b>140</b>
<b>%</b>		<b>0.0%</b>	<b>0.0%</b>		<b>7.2%</b>				<b>10.8%</b>			
<b>OVERALL UNIT TOTAL</b>		<b>18</b>	<b>152</b>	<b>158</b>	<b>158</b>	<b>60</b>	<b>388</b>	<b>349</b>	<b>100%</b>			
<b>%</b>		<b>4.6%</b>	<b>39.2%</b>		<b>40.7%</b>				<b>15.5%</b>			

**RETAIL FRONTAGE - ARLINGTON**

AREA	FRONTAGE LENGTH (FT.)
GROCERY	106'-4"
OUTDOOR DINING/FLEX SPACE	32'-0"
RETAIL PAD	87'-6"
<b>TOTAL RETAIL FRONTAGE LENGTH</b>	<b>223'-11"</b>
<b>TOTAL ARLINGTON PL LENGTH</b>	<b>486'-1"</b>
<b>PERCENTAGE OF RETAIL FRONTAGE</b>	<b>46.3%</b>

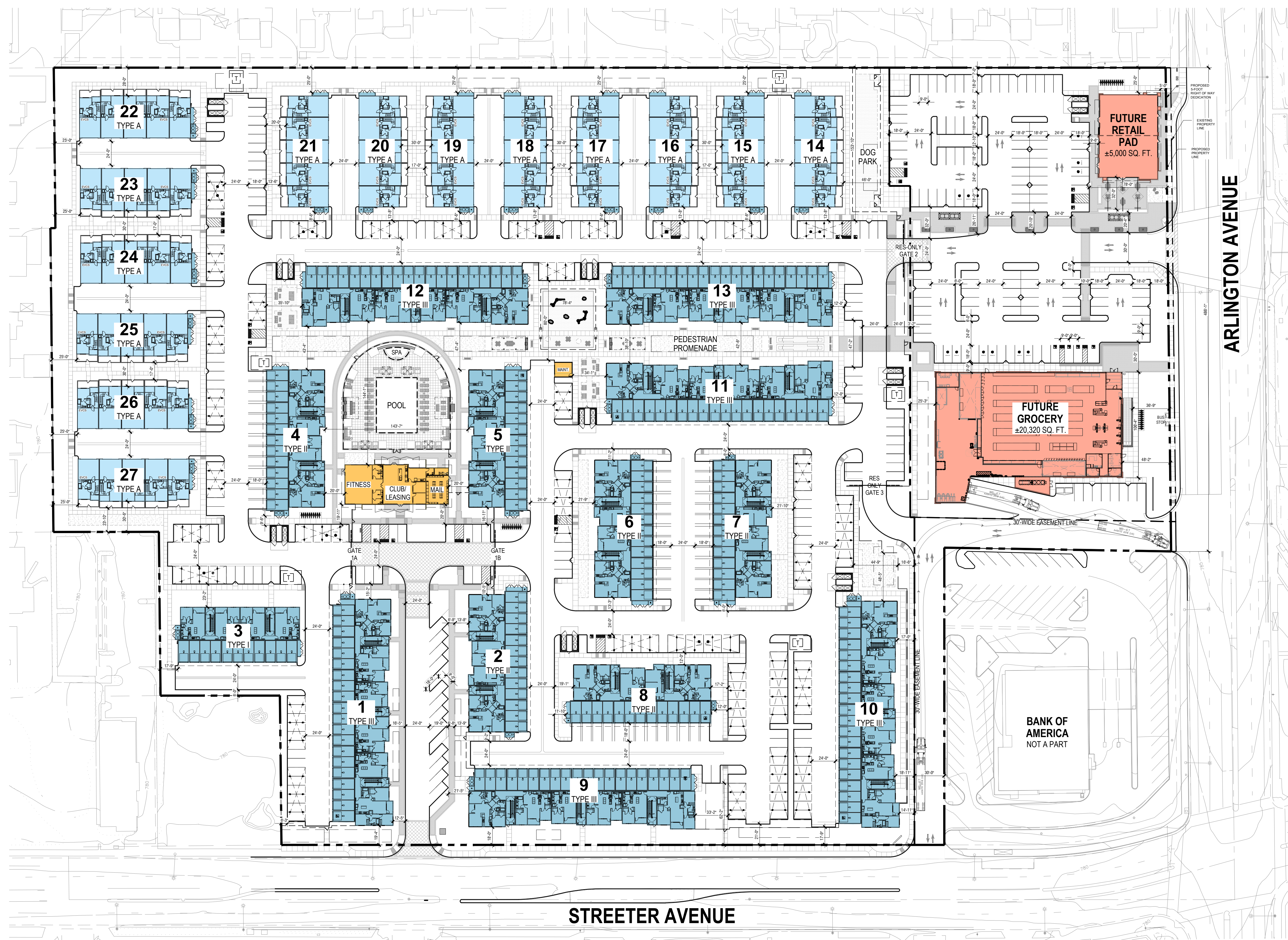
**BUILDING GROSS FLOOR AREA**

BUILDING TYPE	BUILDING COUNT	LEVEL 1	LEVEL 2	LEVEL 3	TOTAL AREA
I	1	6,842	7,079	7,079	21,000
II	6	8,257	8,541	8,541	152,034
III	6	12,927	13,439	13,439	238,830
A	14	4,874	4,741		134,610
LEASE/CLUB	1	4,409			4,409
GROCERY	1	20,320			20,320
RETAIL PAD	1	5,000			5,000
<b>TOTAL</b>	<b>30</b>	<b>231,911</b>	<b>205,333</b>	<b>138,959</b>	<b>576,203</b>



**LEGEND**

- RESIDENTIAL: 2-STORY TOWNHOMES
- RESIDENTIAL: 3-STORY TUCK-UNDER
- RESIDENTIAL: LEASING/AMENITY
- COMMERCIAL

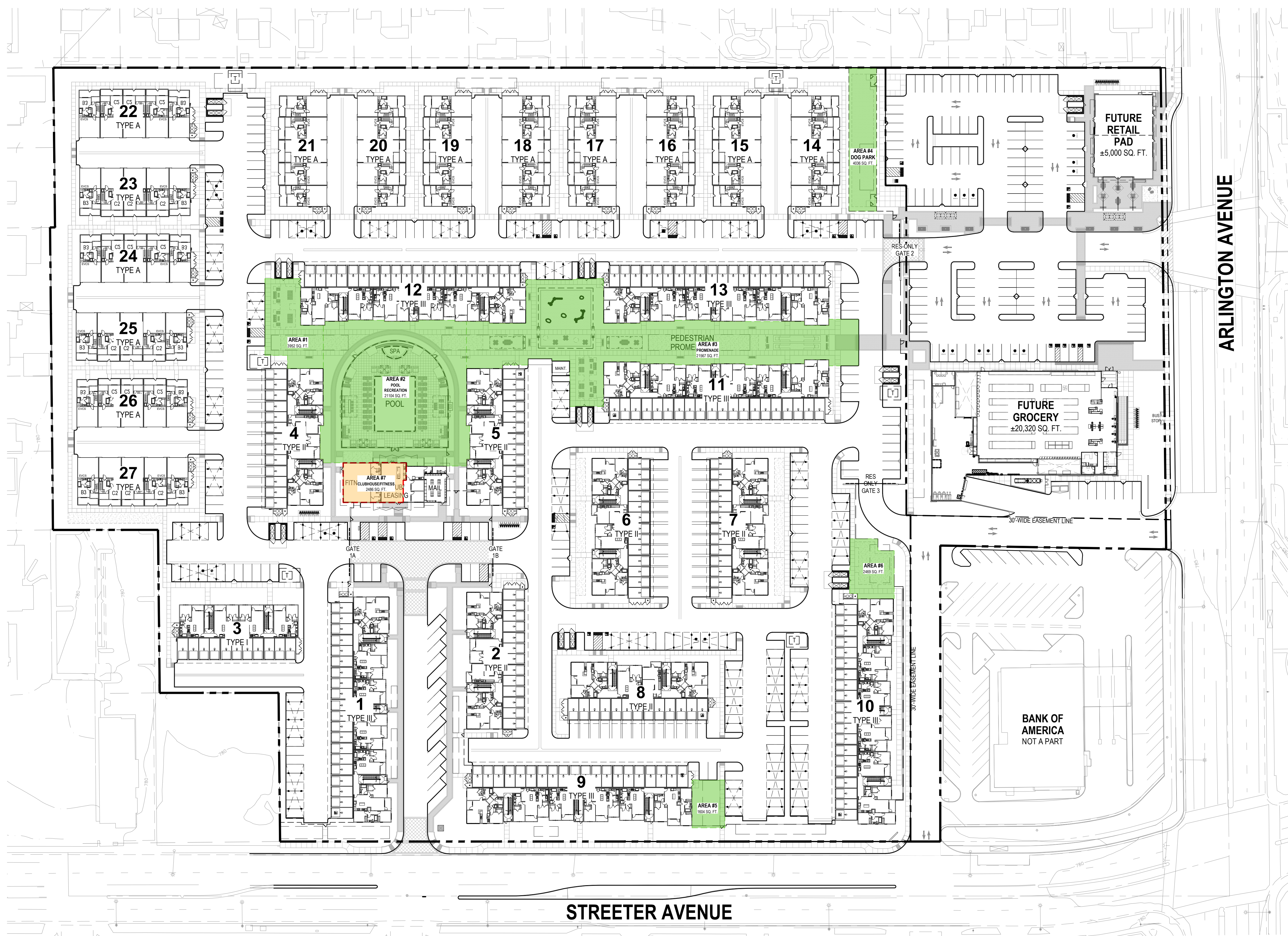




**LEGEND**

- COMMON OPEN SPACE
- INTERIOR AMENITY SPACE

NOTE: COMMON USEABLE OPEN SPACE MAY BE DIVIDED INTO MORE THAN ONE AREA; HOWEVER, AT LEAST ONE AREA SHALL BE A MINIMUM OF 625 SQUARE FEET, WITH NO DIMENSION ON ANY SIDE OF LESS THAN 25 FEET.



TOTAL OPEN SPACE REQUIRED			
TYPE	NUMBER OF UNITS	AREA PER UNIT (SQ. FT.)	TOTAL AREA REQUIRED (SQ. FT.)
PRIVATE	388	50	19,400
COMMON		50	19,400
<b>TOTAL OPEN SPACE REQUIRED</b>			<b>38,800</b>

PRIVATE OPEN SPACE - PROVIDED			
UNIT TYPE	UNIT DECK AREA (SQ. FT.)	NUMBER OF UNITS	TOTAL AREA (SQ. FT.)
S1	51	18	918
A1	64	66	4,224
A2	64	86	5,504
B1	54	40	2,160
B2	69	36	2,484
B3	215	28	6,020
B4	50	54	2,700
C1	77	18	1,386
C2	243	42	10,206
<b>TOTAL PRIVATE OPEN SPACE PROVIDED</b>			<b>35,602</b>

COMMON OPEN SPACE - PROVIDED		
LOCATION	TOTAL AREA (SQ. FT.)	
AREA #1	3,952	
AREA #2 - POOL RECREATION	20,957	
AREA #3 - PROMENADE	21,567	
AREA #4 - DOG PARK	4,036	
AREA #5	1,604	
AREA #6	2,469	
AREA #7 - CLUBHOUSE/FITNESS	2,486	
<b>TOTAL COMMON OPEN SPACE PROVIDED</b>		<b>57,071</b>

TOTAL OPEN SPACE PROVIDED		
TYPE	TOTAL AREA (SQ. FT.)	
PRIVATE OPEN SPACE	35,602	
COMMON OPEN SPACE	57,071	
<b>TOTAL OPEN SPACE PROVIDED</b>		<b>92,673</b>