



2025-2026 ANNUAL WATER SUPPLY AND DEMAND ASSESSMENT

Water Engineering

Board of Public Utilities

May 12, 2025

RiversideCA.gov

1

BACKGROUND

1. California Water Code Section 10632.1 requires urban water suppliers to prepare an AWSDA and submit an Annual Shortage Report to DWR by July 1 each year, beginning in 2022
2. The assessment and report are based on the procedures and recommendations provided by the DWR
3. Final guidance documents were published in April 2022, followed by the publication of a Guidance addendum on May 10, 2023



2

RiversideCA.gov

2

BACKGROUND

Purpose of the Annual Assessment:

1. Evaluate Water Agencies on their water supply reliability for the current year and including one dry year
2. Generate and submit an Annual Shortage Report on the Annual Assessment and results every year regarding their anticipated shortages to DWR by July 1



3

RiversideCA.gov

3

DISCUSSION

Riverside's Available Water Supply Projection in 2025-2026:

1. The Annual Assessment reflects the available water supply from groundwater extraction rights, as shown on the next slide
2. Considers the available capacity from groundwater supply wells during high demand and conveyance capability
3. An agreement with Western Municipal Water District (WMWD) provides access to 21,700 acre feet per year (AFY) of imported water
4. Recycled water for non-potable uses that meets the need of up to 800 AFY



4

RiversideCA.gov

4

CURRENT WATER RIGHTS SUPPLIES

Extraction/Export Rights

Bunker Hill
55,263 AFY Export

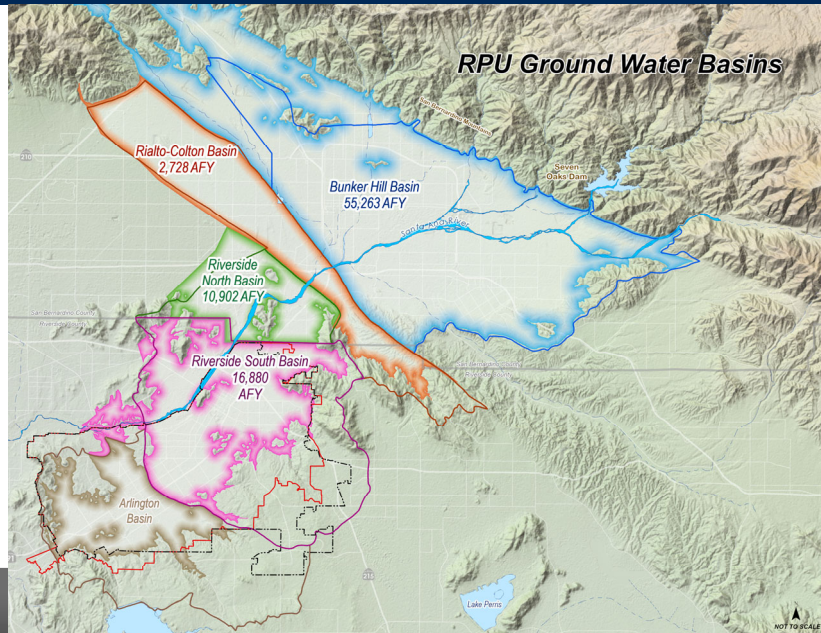
Colton
2,728 AFY Export

Riverside North
10,902 AFY Export

Riverside South
16,880 AFY Extraction

85,773 AFY Total

Olympic Size Swimming
Pool ~ 2 Acre-feet



5

Riverside's Water Supply Projections

Fiscal Year 25/26

Water supply	Additional Detail on Water Supply	Reasonably Available Volume
Groundwater	Bunker Hill	55,263
Groundwater	Riverside North	10,902
Groundwater	Riverside South	16,880
Groundwater	Rialto-Colton	2,728
Recycled water	RWQCP	800
Purchased or imported water	From WMWD	21,700
Total:		108,273



6

RiversideCA.gov

6

ACTUAL CUSTOMER WATER USE

	2020	2021	2022	2023	2024
Potable and Non-Potable (AF)	81,197	81,045	81,481	66,840	71,115
Recycled Water (AF)	141	174	205.7	155.44	166.35
Total Water Use (AF)	81,338	81,219	81,687	66,996	71,281



7

RiversideCA.gov

7

RIVERSIDE'S WATER DEMAND PROJECTIONS

Estimation of the total potable and non-potable monthly water demand projections from July 2025 to June 2026:

1. By adding all the next year's projected water needs for all demand categories
2. Considering the monthly projected weather and growth



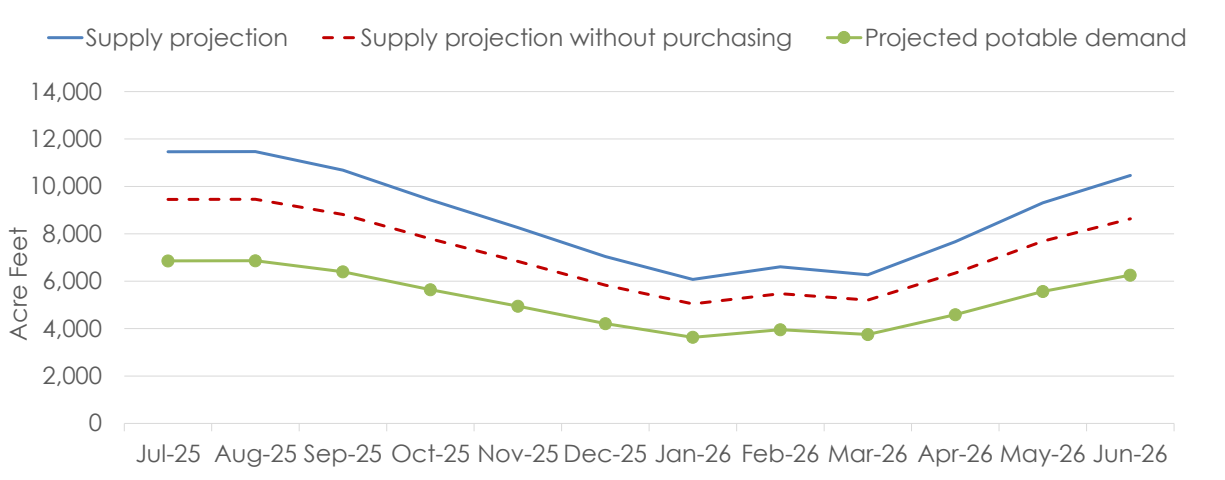
8

RiversideCA.gov

8

PROJECTED WATER SUPPLY VS. WATER DEMAND

As of 2025, RPU can meet all current demands with local groundwater supplies and with available groundwater capacity during the high demand season.



RiversideCA.gov

9

REQUIRED SUBMITTALS TO DWR FOR THE AWSDA

Status Completion of RPU's AWSDA Required Submittal

	Annual Water Supply and Demand Assessment Report Topic	
Table 1	Annual Assessment Information	Completed
Table 2	Key Data – Demands, containing estimated unconstrained demand from July – June of next year	Completed
Table 3	Key Data – Supplies, containing estimated available supplies from July – June of next year	Completed
Table 4	Annual Water Shortage Assessment, showing a summary of monthly supply/demand balances as well as shortages and results of planned actions	Completed
Table 5	Planned Water Shortage Response Actions, containing information on planned water shortage response actions (if any)	Completed
RPU Methodology	Optional attachments to include details on the implementation of the procedures that took place this year. Information may include descriptions of the steps followed, data sources considered, methodologies used, and the decision-making process.	Completed



10

RiversideCA.gov

10

STRATEGIC PLAN ALIGNMENT



Strategic Priority 4 – Environmental Stewardship

Goal No. 4.2 – Sustainably manage local water resources to maximize reliability and advance water reuse to ensure safe, reliable, and affordable water to our community.

Cross-Cutting Threads



Community Trust



Equity



Fiscal Responsibility



Innovation



Sustainability & Resiliency



11

RiversideCA.gov

11

RECOMMENDATIONS

Recommend that the Board of Public Utilities:

1. Approve the Riverside 2025-2026 Annual water Supply and Demand Assessment
2. Recommend that the City Council adopt the Riverside 2025-2026 Annual water Supply and Demand Assessment



12

RiversideCA.gov

12